

DISTRICT I
1625 N. French Dr., Hobbs, NM 88240
Phone (505) 393-6161 Fax: (505) 393-0720

DISTRICT II
811 S. First St., Artesia, NM 88210
Phone (505) 748-1283 Fax: (505) 748-0720

DISTRICT III
1000 Rio Brazos Rd., Aztec, NM 87410
Phone (505) 354-6178 Fax: (505) 354-6170

DISTRICT IV
1226 S. St. Francis Dr., Santa Fe, NM 87505
Phone (505) 476-3460 Fax: (505) 476-3462

State of New Mexico
Energy, Minerals and Natural Resources Department

OIL CONSERVATION DIVISION
1226 South St. Francis Dr.
Santa Fe, New Mexico 87505

HOBBS OCD

11/21/2017

RECEIVED

Form C-102
Revised August 1, 2011

Submit one copy to appropriate
District Office

WELL LOCATION AND ACREAGE DEDICATION PLAT

☐ AMENDED REPORT

API Number 30-025-42687	Pool Code 97597	Pool Name Jabalina; Delaware, SW
Property Code 315023	Property Name BILLIKEN 7 FEDERAL	Well Number 1H
OGRID No. 6137	Operator Name DEVON ENERGY PRODUCTION LP	Elevation 3267

Surface Location

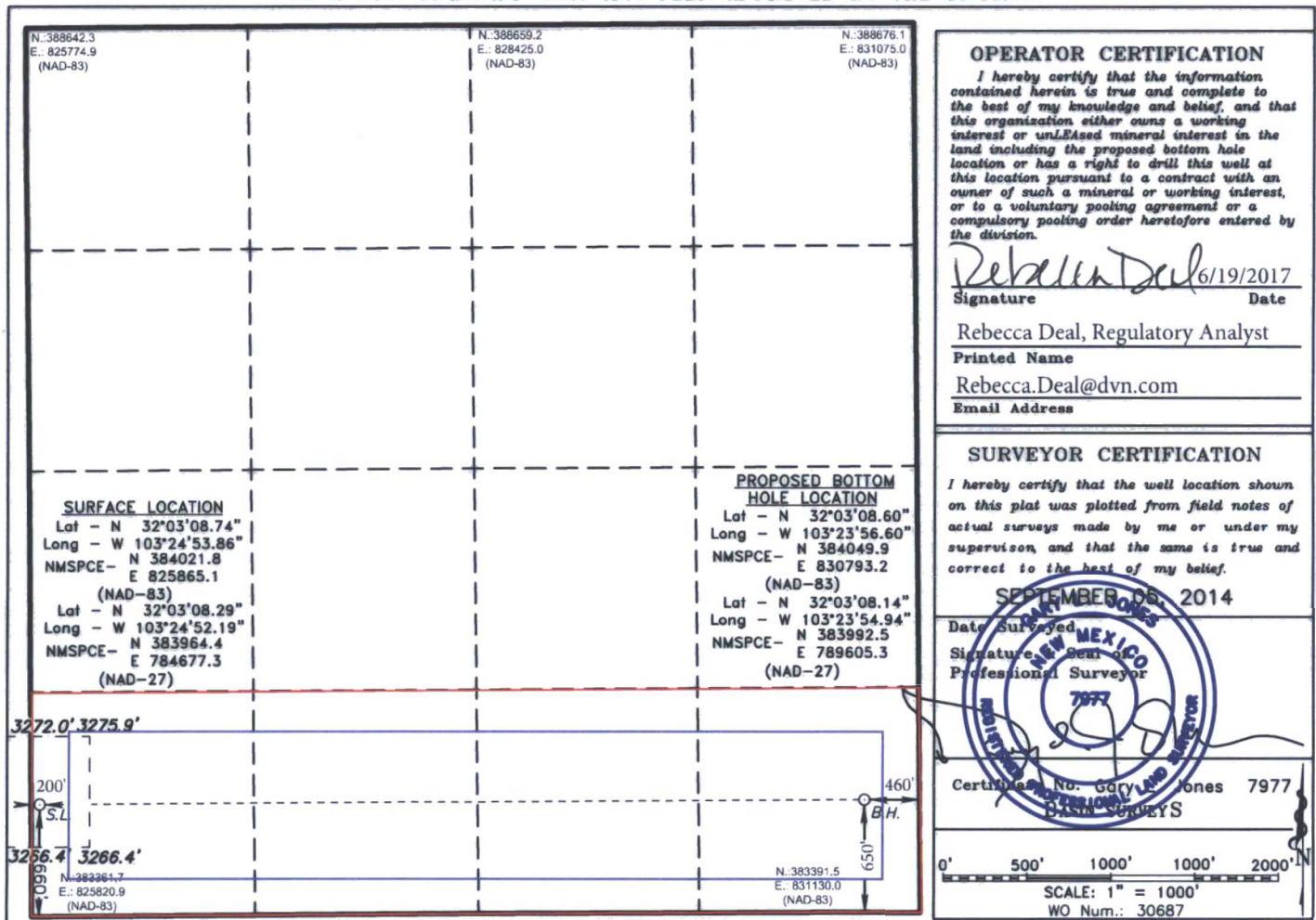
UL or lot No.	Section	Township	Range	Lot Idn	Feet from the	North/South line	Feet from the	East/West line	County
M	7	26 S	35 E		660	SOUTH	200	WEST	LEA

Bottom Hole Location If Different From Surface

UL or lot No.	Section	Township	Range	Lot Idn	Feet from the	North/South line	Feet from the	East/West line	County
P	7	26 S	35 E		650	SOUTH	470	EAST	LEA

Dedicated Acres 160.74	Joint or Infill	Consolidation Code	Order No.
---------------------------	-----------------	--------------------	-----------

NO ALLOWABLE WILL BE ASSIGNED TO THIS COMPLETION UNTIL ALL INTERESTS HAVE BEEN CONSOLIDATED
OR A NON-STANDARD UNIT HAS BEEN APPROVED BY THE DIVISION



OPERATOR CERTIFICATION

I hereby certify that the information contained herein is true and complete to the best of my knowledge and belief, and that this organization either owns a working interest or unleased mineral interest in the land including the proposed bottom hole location or has a right to drill this well at this location pursuant to a contract with an owner of such a mineral or working interest, or to a voluntary pooling agreement or a compulsory pooling order heretofore entered by the division.

Rebecca Deal 6/19/2017
Signature Date

Rebecca Deal, Regulatory Analyst

Printed Name

Rebecca.Deal@dmv.com

Email Address

SURVEYOR CERTIFICATION

I hereby certify that the well location shown on this plat was plotted from field notes of actual surveys made by me or under my supervision, and that the same is true and correct to the best of my belief.

SEPTEMBER 06, 2014

Date Surveyed
Signature
Professional Surveyor

Certificate No. Gary L. Jones 7977
Professional Surveyor

0' 500' 1000' 1000' 2000'
SCALE: 1" = 1000'
WO Num.: 30687

PP: 660' FSL & 200 FWL, Sec 7, T26S, R35E

Project Area:

Producing Area: