

Bureau of Land Management

Hobbs Field Office

414 W. Taylor

Hobbs, New Mexico

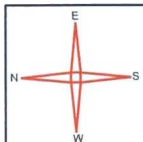
505.393.3612

WATER PRODUCTION & DISPOSAL INFORMATION

HOBBS OCD
JUL 13 2017
RECEIVED

Well: PISTOLERO 15 FED # 701H
NWNW Sec 15 T25S, R34E
30-025-43534

1. Name of formations producing water on lease: WOLFCAMP
2. Amount of water produced from all formations in barrels per day 2000-4000 BWPD
3. How water is stored on lease Tanks 4-400 bbl tanks
4. How water is moved to disposal facility Pipeline/Trucked
5. Disposal Facility:
 - a. Facility Operators name EOG RESOURCES, INC
 - b. Name of facility or well name & number
Black Bear 36 State #5
30-025-40585
H-36-25S-33E
 - c. Type of facility or wells WDW
 - d. Permit No SWD -1359



EOG Resources, Inc.
Pistolero 15 FED #701H
API 30-025-43534
SEC.15-T25S-R34E

6/30/2017

LEGEND



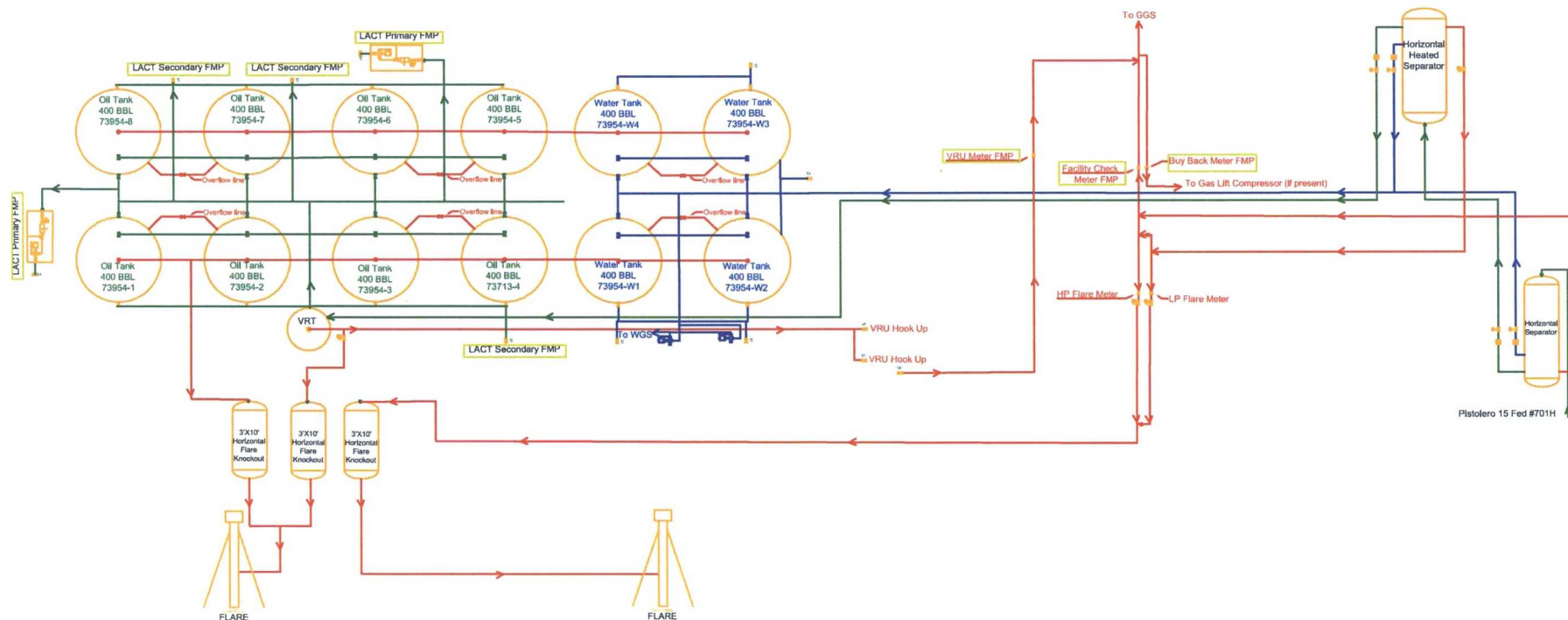
FACILITY DIAGRAM

Shown: Major equipment, vessels, process piping, and valves
Not shown: Auxiliary process systems such as pneumatic air system, gas lift system, roll lines, recirculating lines, vent lines, and small drain lines

PRODUCTION PHASE: All valves that provide access to production are effectively sealed in the closed position.

SALES THROUGH LACT UNITS: Sale is measured through LACT units. All other valves that provide access to production (load-out valves) are effectively sealed in the closed position.

WATER TANKS: If the possibility for oil to enter water tanks exists through common recirculating or equalizing lines, oil tanks are isolated from water tanks by valves effectively sealed in the closed position.



Facility Overview: Please see pages 2 and 3 for details.

