

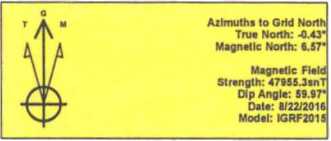




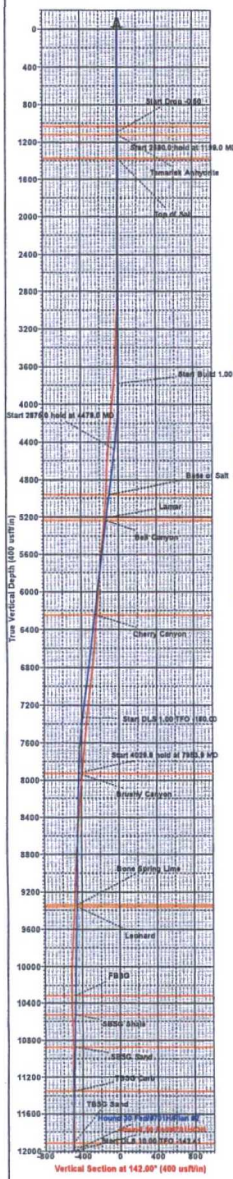
Lea County, NM (NAD 27 NME)  
 Hound 30 Fed #701H  
 H&P 642  
 Plan #2

PROJECT DETAILS: Lea County, NM (NAD 27 NME)  
 Geodetic System: US State Plane 1927 (Exact solution)  
 Datum: NAD 1927 (NADCON CONUS)  
 Ellipsoid: Clarke 1866  
 Zone: New Mexico East 3001  
 System Datum: Mean Sea Level

WELL DETAILS: #701H  
 Ground Level: 3317.0  
 KB = 25' @ 3342.0usft (H&P 642)  
 Northing: 401122.00 Easting: 753414.00 Latitude: 32° 6' 0.564 N Longitude: 103° 30' 53.914 W



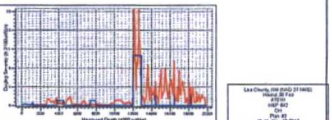
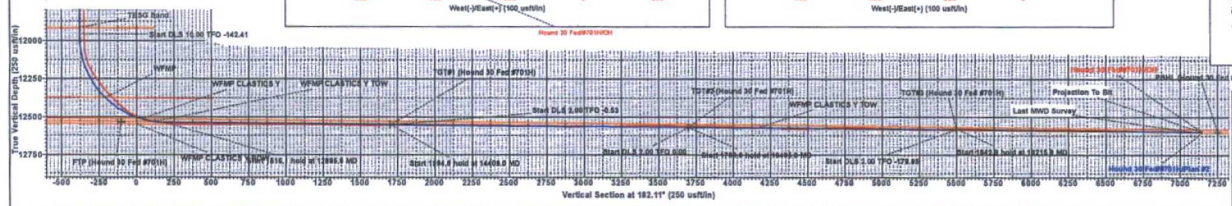
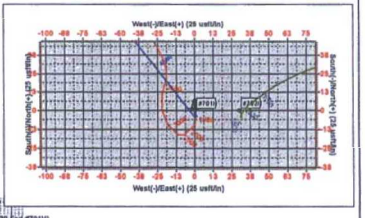
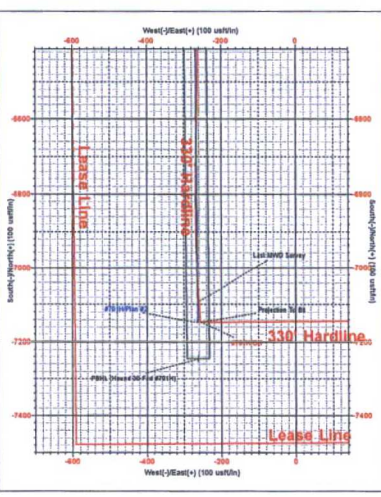
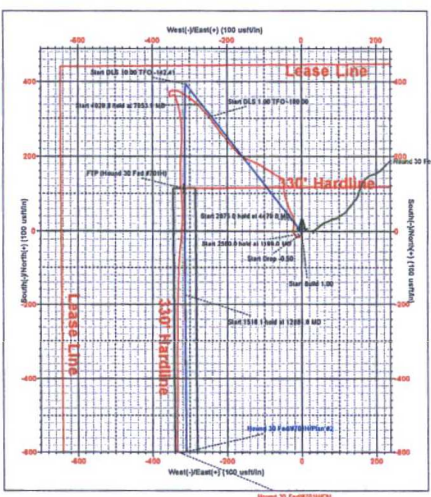
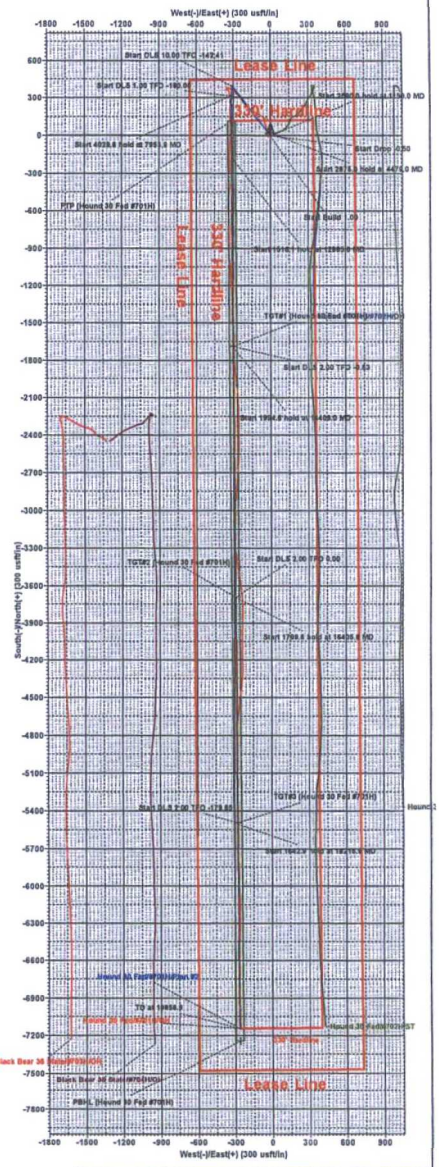
To convert a Magnetic Direction to a Grid Direction, Add 6.57°  
 To convert a Magnetic Direction to a True Direction, Add 7.01° East  
 To convert a True Direction to a Grid Direction, Subtract 0.43°



SECTION DETAILS										
Sec	MD	Inc	Azi	TVD	+N/-S	+E/-W	Dleg	TFace	Vsect	Target
1	1093.0	0.53	192.91	1093.0	-5.0	0.6	0.00	0.00	5.0	
2	1199.0	0.00	0.00	1199.0	-5.5	0.5	0.50	180.00	5.5	
3	3779.0	0.00	0.00	3779.0	-5.5	0.5	0.00	0.00	5.5	
4	4479.0	7.00	322.00	4477.2	28.1	-25.8	1.00	322.00	-27.2	
5	7354.0	7.00	322.00	7330.8	304.2	-241.4	0.00	0.00	-295.2	
6	7953.9	1.00	322.00	7929.0	337.2	-267.2	1.00	-180.00	-327.2	
7	11993.7	1.00	322.00	11958.2	392.6	-310.5	0.00	0.00	-381.0	
8	12895.6	89.40	179.59	12539.0	-174.3	-312.6	10.00	-142.41	-185.6	
9	14401.7	89.40	179.59	12555.0	-1690.2	-301.8	0.00	0.00	1700.1	TGT#1 (Hound 30 Fed #701H)
10	14409.0	89.54	179.59	12555.1	-1697.5	-301.7	2.00	-0.53	1707.5	
11	16403.6	89.54	179.59	12571.0	-3692.0	-287.4	0.00	0.00	3700.1	TGT#2 (Hound 30 Fed #701H)
12	16405.8	89.59	179.59	12571.0	-3694.2	-287.4	2.00	0.00	3702.3	
13	18205.4	89.59	179.59	12584.0	-5493.7	-274.5	0.00	0.00	5500.1	TGT#3 (Hound 30 Fed #701H)
14	18215.9	89.38	179.59	12584.1	-5504.3	-274.5	2.00	-179.85	5510.6	
15	19858.8	89.38	179.59	12602.0	-7147.0	-262.7	0.00	0.00	7151.8	PBHL (Hound 30 Fed #701H)

CASING DETAILS  
 No casing data is available

WELLBORE TARGET DETAILS (MAP CO-ORDINATES)					
Name	TVD	+N/-S	+E/-W	Northing	Easting
TGT#1 (Hound 30 Fed #701H)	12555.0	-1690.2	-301.8	399431.80	763112.24
TGT#2 (Hound 30 Fed #701H)	12571.0	-3692.0	-287.4	397450.00	763135.56
TGT#3 (Hound 30 Fed #701H)	12584.0	-5493.7	-274.5	396628.30	763139.46
PBHL (Hound 30 Fed #701H)	12602.0	-7247.0	-282.0	393876.00	763162.00
FTP (Hound 30 Fed #701H)	12539.0	113.0	-316.0	401235.00	763099.00



Lea County, NM (NAD 27 NME)  
 Hound 30 Fed #701H  
 H&P 642  
 Plan #2



## **EOG Resources - Midland**

Lea County, NM (NAD 27 NME)

Hound 30 Fed

#701H

OH

Design: OH

### **PVA**

10 May, 2017

**RECEIVED**

JUL 10 2017

**HOBBS OCD**





EOG Resources, Inc.

PVA

<b>Company:</b>	EOG Resources - Midland	<b>Local Co-ordinate Reference:</b>	Well #701H
<b>Project:</b>	Lea County, NM (NAD 27 NME)	<b>TVD Reference:</b>	KB = 25' @ 3342.0usft (H&P 642)
<b>Site:</b>	Hound 30 Fed	<b>MD Reference:</b>	KB = 25' @ 3342.0usft (H&P 642)
<b>Well:</b>	#701H	<b>North Reference:</b>	Grid
<b>Wellbore:</b>	OH	<b>Survey Calculation Method:</b>	Minimum Curvature
<b>Design:</b>	OH	<b>Database:</b>	EDM 5000.1 Single User Db

<b>Project</b>	Lea County, NM (NAD 27 NME)		
<b>Map System:</b>	US State Plane 1927 (Exact solution)	<b>System Datum:</b>	Mean Sea Level
<b>Geo Datum:</b>	NAD 1927 (NADCON CONUS)		
<b>Map Zone:</b>	New Mexico East 3001		

<b>Site</b>	Hound 30 Fed				
<b>Site Position:</b>		<b>Northing:</b>	401,122.00 usft	<b>Latitude:</b>	32° 6' 0.564 N
<b>From:</b>	Map	<b>Easting:</b>	753,414.00 usft	<b>Longitude:</b>	103° 30' 53.914 W
<b>Position Uncertainty:</b>	0.0 usft	<b>Slot Radius:</b>	13-3/16 "	<b>Grid Convergence:</b>	0.43 °

<b>Well</b>	#701H					
<b>Well Position</b>	+N/-S	0.0 usft	<b>Northing:</b>	401,122.00 usft	<b>Latitude:</b>	32° 6' 0.564 N
	+E/-W	0.0 usft	<b>Easting:</b>	753,414.00 usft	<b>Longitude:</b>	103° 30' 53.914 W
<b>Position Uncertainty</b>		0.0 usft	<b>Wellhead Elevation:</b>	0.0 usft	<b>Ground Level:</b>	3,317.0 usft

<b>Wellbore</b>	OH				
<b>Magnetics</b>	<b>Model Name</b>	<b>Sample Date</b>	<b>Declination (°)</b>	<b>Dip Angle (°)</b>	<b>Field Strength (nT)</b>
	IGRF2015	8/22/2016	7.01	59.97	47,955

<b>Design</b>	OH				
<b>Audit Notes:</b>					
<b>Version:</b>	1.0	<b>Phase:</b>	ACTUAL	<b>Tie On Depth:</b>	0.0
<b>Vertical Section:</b>	<b>Depth From (TVD) (usft)</b>	<b>+N/-S (usft)</b>	<b>+E/-W (usft)</b>	<b>Direction (°)</b>	
	0.0	0.0	0.0	182.07	



EOG Resources, Inc.

PVA

<b>Company:</b>	EOG Resources - Midland	<b>Local Co-ordinate Reference:</b>	Well #701H
<b>Project:</b>	Lea County, NM (NAD 27 NME)	<b>TVD Reference:</b>	KB = 25' @ 3342.0usft (H&P 642)
<b>Site:</b>	Hound 30 Fed	<b>MD Reference:</b>	KB = 25' @ 3342.0usft (H&P 642)
<b>Well:</b>	#701H	<b>North Reference:</b>	Grid
<b>Wellbore:</b>	OH	<b>Survey Calculation Method:</b>	Minimum Curvature
<b>Design:</b>	OH	<b>Database:</b>	EDM 5000.1 Single User Db

Survey Program		Date 5/10/2017			
From (usft)	To (usft)	Survey (Wellbore)	Tool Name	Description	
139.0	1,093.0	TrueShot (OH)	MWD	MWD - Standard	
1,132.0	19,838.0	Intrepid MWD (OH)	MWD	MWD - Standard	

MD (usft)	Inc (°)	Azi (grid_north_azim)	TVD (usft)	N/S (usft)	E/W (usft)	DLeg (°/100usft)	Build (°/100usft)	Turn (°/100usft)	High to Plan (usft)	Right to Plan (usft)
0.0	0.00	0.00	0.0	0.0	0.0	0.0	0.00	0.00	0.0	0.0
139.0	0.20	19.60	139.0	0.2	0.1	0.14	0.14	0.00	0.0	0.0
313.0	0.30	167.30	313.0	0.1	0.3	0.28	0.06	84.89	0.0	0.0
405.0	0.20	210.00	405.0	-0.3	0.3	0.22	-0.11	46.41	0.0	0.0
499.0	0.30	149.80	499.0	-0.7	0.3	0.28	0.11	-64.04	0.0	0.0
592.0	0.30	180.20	592.0	-1.1	0.4	0.17	0.00	32.69	0.0	0.0
783.0	0.48	172.70	783.0	-2.4	0.5	0.10	0.09	-3.93	0.0	0.0
877.0	0.53	169.97	877.0	-3.2	0.6	0.06	0.05	-2.90	0.0	0.0
971.0	0.44	177.53	971.0	-4.0	0.7	0.12	-0.10	8.04	0.0	0.0
1,093.0	0.53	192.91	1,093.0	-5.0	0.6	0.13	0.07	12.61	0.0	0.0
1,132.0	0.50	194.00	1,132.0	-5.4	0.5	0.08	-0.08	2.79	-0.1	0.0
1,317.0	0.40	170.70	1,317.0	-6.8	0.5	0.11	-0.05	-12.59	-1.3	-0.3
1,504.0	0.40	177.20	1,504.0	-8.1	0.6	0.02	0.00	3.48	-2.6	-0.1
1,691.0	0.50	211.40	1,691.0	-9.4	0.2	0.15	0.05	18.29	-3.5	1.8
1,879.0	0.50	215.50	1,879.0	-10.8	-0.7	0.02	0.00	2.18	-5.0	2.1
2,067.0	0.60	218.30	2,066.9	-12.2	-1.8	0.06	0.05	1.49	-6.7	2.4
2,254.0	0.80	246.10	2,253.9	-13.5	-3.6	0.21	0.11	14.87	-7.0	5.7
2,443.0	0.70	225.50	2,442.9	-14.9	-5.6	0.15	-0.05	-10.90	-11.0	2.4
2,630.0	0.70	200.70	2,629.9	-16.8	-6.8	0.16	0.00	-13.26	-13.1	-2.9
2,818.0	2.50	289.10	2,817.8	-16.5	-11.1	1.37	0.96	47.02	-7.4	14.2
3,006.0	3.50	328.90	3,005.6	-10.2	-18.0	1.20	0.53	21.17	-5.5	18.3



EOG Resources, Inc.

PVA

Company: EOG Resources - Midland  
 Project: Lea County, NM (NAD 27 NME)  
 Site: Hound 30 Fed  
 Well: #701H  
 Wellbore: OH  
 Design: OH

Local Co-ordinate Reference: Well #701H  
 TVD Reference: KB = 25' @ 3342.0usft (H&P 642)  
 MD Reference: KB = 25' @ 3342.0usft (H&P 642)  
 North Reference: Grid  
 Survey Calculation Method: Minimum Curvature  
 Database: EDM 5000.1 Single User Db

Survey

MD (usft)	Inc (°)	Azi (grid_north_azim)	TVD (usft)	N/S (usft)	E/W (usft)	DLeg (°/100usft)	Build (°/100usft)	Turn (°/100usft)	High to Plan (usft)	Right to Plan (usft)
3,194.0	3.50	348.00	3,193.3	0.3	-22.1	0.62	0.00	10.16	-10.4	20.9
3,381.0	3.30	18.00	3,379.9	11.0	-21.6	0.95	-0.11	16.04	-8.8	26.2
3,569.0	3.60	8.30	3,567.6	22.0	-19.1	0.35	0.16	-5.16	-24.3	23.4
3,757.0	5.30	335.80	3,755.1	35.7	-21.8	1.58	0.90	-17.29	-46.8	3.5
3,944.0	5.80	333.30	3,941.2	52.1	-29.6	0.30	0.27	-1.34	-62.7	0.6
4,132.0	5.50	343.30	4,128.3	69.2	-36.5	0.55	-0.16	5.32	-72.1	10.0
4,320.0	5.20	339.80	4,315.5	85.8	-42.0	0.24	-0.16	-1.86	-76.1	0.5
4,508.0	4.20	351.10	4,502.8	100.6	-46.0	0.72	-0.53	6.01	-71.6	6.8
4,695.0	3.80	357.70	4,689.4	113.6	-47.3	0.33	-0.21	3.53	-64.7	2.4
4,883.0	2.40	25.00	4,877.1	123.4	-45.9	1.06	-0.74	14.52	-55.4	14.2
5,071.0	3.30	330.60	5,064.9	131.6	-46.9	1.45	0.48	-28.94	-29.0	-43.2
5,257.0	6.00	303.20	5,250.3	141.6	-57.7	1.84	1.45	-14.73	1.0	-46.9
5,445.0	6.00	301.90	5,437.3	152.2	-74.2	0.07	0.00	-0.69	4.0	-39.2
5,632.0	5.80	302.70	5,623.3	162.5	-90.5	0.12	-0.11	0.43	5.8	-31.6
5,819.0	5.10	302.00	5,809.4	172.0	-105.5	0.38	-0.37	-0.37	9.8	-23.8
6,007.0	5.00	297.10	5,996.7	180.1	-119.8	0.24	-0.05	-2.61	16.1	-13.9
6,193.0	4.70	295.40	6,182.0	187.1	-133.9	0.18	-0.16	-0.91	21.1	-3.6
6,381.0	4.70	291.50	6,369.4	193.2	-148.1	0.17	0.00	-2.07	25.7	9.0
6,568.0	4.70	306.10	6,555.8	200.6	-161.4	0.64	0.00	7.81	34.0	10.4
6,755.0	6.30	317.80	6,741.9	212.7	-174.5	1.04	0.86	6.26	40.4	6.6
6,941.0	6.10	319.10	6,926.8	227.7	-187.8	0.13	-0.11	0.70	43.1	7.0
7,129.0	6.10	320.40	7,113.8	242.9	-200.7	0.07	0.00	0.69	46.2	6.9
7,317.0	5.70	322.30	7,300.8	258.0	-212.8	0.24	-0.21	1.01	50.0	5.6
7,504.0	5.30	322.00	7,486.9	272.2	-223.8	0.21	-0.21	-0.16	52.9	5.8
7,691.0	5.10	324.10	7,673.1	285.7	-234.0	0.15	-0.11	1.12	50.9	3.7
7,878.0	4.80	323.60	7,859.4	298.7	-243.5	0.16	-0.16	-0.27	43.4	3.8
8,066.0	4.50	319.20	8,046.8	310.7	-253.0	0.25	-0.16	-2.34	31.4	6.7



EOG Resources, Inc.

PVA

Company: EOG Resources - Midland  
 Project: Lea County, NM (NAD 27 NME)  
 Site: Hound 30 Fed  
 Well: #701H  
 Wellbore: OH  
 Design: OH

Local Co-ordinate Reference: Well #701H  
 TVD Reference: KB = 25' @ 3342.0usft (H&P 642)  
 MD Reference: KB = 25' @ 3342.0usft (H&P 642)  
 North Reference: Grid  
 Survey Calculation Method: Minimum Curvature  
 Database: EDM 5000.1 Single User Db

Survey

MD (usft)	Inc (°)	Azi (grid_north_azim)	TVD (usft)	N/S (usft)	E/W (usft)	DLeg (°/100usft)	Build (°/100usft)	Turn (°/100usft)	High to Plan (usft)	Right to Plan (usft)
8,253.0	4.00	319.00	8,233.3	321.1	-262.0	0.27	-0.27	-0.11	20.8	6.9
8,440.0	3.70	318.40	8,419.9	330.6	-270.3	0.16	-0.16	-0.32	11.4	7.3
8,628.0	3.40	312.60	8,607.5	338.9	-278.5	0.25	-0.16	-3.09	2.3	8.3
8,816.0	3.30	309.00	8,795.2	346.1	-286.8	0.12	-0.05	-1.91	-6.0	8.8
9,004.0	3.10	305.70	8,982.9	352.4	-295.1	0.14	-0.11	-1.76	-13.9	9.1
9,192.0	3.00	302.10	9,170.6	358.0	-303.4	0.11	-0.05	-1.91	-21.3	9.0
9,379.0	2.90	301.10	9,357.4	363.1	-311.6	0.06	-0.05	-0.53	-28.1	9.7
9,565.0	2.70	308.00	9,543.2	368.2	-319.1	0.21	-0.11	3.71	-32.6	14.4
9,751.0	3.00	292.10	9,728.9	372.7	-327.0	0.45	0.16	-8.55	-41.6	5.3
9,938.0	3.30	282.20	9,915.7	375.7	-336.8	0.33	0.16	-5.29	-49.5	-0.7
10,126.0	3.10	252.00	10,103.4	375.3	-347.0	0.89	-0.11	-16.06	-51.1	-25.2
10,313.0	1.40	215.80	10,290.2	371.8	-353.1	1.14	-0.91	-19.36	-33.7	-50.3
10,500.0	2.70	175.60	10,477.1	365.6	-354.1	1.00	0.70	-21.50	-2.1	-59.8
10,687.0	1.10	133.90	10,664.0	360.0	-352.5	1.08	-0.86	-22.30	29.9	-49.5
10,875.0	1.30	61.00	10,852.0	359.7	-349.3	0.76	0.11	-38.78	52.9	9.1
11,062.0	1.70	73.60	11,038.9	361.6	-344.8	0.28	0.21	6.74	47.6	-5.2
11,250.0	1.00	49.30	11,226.9	363.4	-340.9	0.47	-0.37	-12.93	41.5	10.4
11,437.0	1.10	107.40	11,413.8	363.9	-337.9	0.55	0.05	31.07	25.4	-30.2
11,624.0	0.60	199.80	11,600.8	362.5	-336.5	0.68	-0.27	49.41	-33.9	-19.6
11,812.0	0.50	245.70	11,788.8	361.2	-337.6	0.23	-0.05	24.41	-38.3	14.6
11,944.0	0.50	281.80	11,920.8	361.1	-338.7	0.23	0.00	27.35	-21.7	36.2
12,038.0	2.00	157.70	12,014.8	359.7	-338.5	2.47	1.60	-132.02	-18.1	-37.0
12,085.0	6.00	155.20	12,061.7	356.7	-337.1	8.52	8.51	-5.32	-14.4	-34.7
12,132.0	14.50	162.30	12,107.9	348.8	-334.3	18.25	18.09	15.11	-17.5	-28.7
12,179.0	23.40	165.80	12,152.3	334.1	-330.2	19.08	18.94	7.45	-21.1	-23.2
12,226.0	30.80	169.30	12,194.1	313.2	-325.7	16.10	15.74	7.45	-26.7	-17.7
12,273.0	35.30	174.60	12,233.5	287.9	-322.2	11.37	9.57	11.28	-32.9	-11.9



EOG Resources, Inc.

PVA

Company: EOG Resources - Midland  
 Project: Lea County, NM (NAD 27 NME)  
 Site: Hound 30 Fed  
 Well: #701H  
 Wellbore: OH  
 Design: OH

Local Co-ordinate Reference: Well #701H  
 TVD Reference: KB = 25' @ 3342.0usft (H&P 642)  
 MD Reference: KB = 25' @ 3342.0usft (H&P 642)  
 North Reference: Grid  
 Survey Calculation Method: Minimum Curvature  
 Database: EDM 5000.1 Single User Db

Survey

MD (usft)	Inc (")	Azi (grid_north_azim)	TVD (usft)	N/S (usft)	E/W (usft)	DLeg (°/100usft)	Build (°/100usft)	Turn (°/100usft)	High to Plan (usft)	Right to Plan (usft)
12,319.0	36.90	180.20	12,270.7	260.8	-321.0	7.97	3.48	12.17	-36.9	-7.6
12,366.0	37.50	182.60	12,308.1	232.4	-321.7	3.34	1.28	5.11	-37.2	-6.9
12,413.0	41.50	183.60	12,344.4	202.6	-323.3	8.62	8.51	2.13	-35.1	-8.1
12,460.0	44.80	181.50	12,378.7	170.5	-324.7	7.66	7.02	-4.47	-31.6	-10.4
12,504.0	47.50	178.00	12,409.1	138.8	-324.6	8.40	6.14	-7.95	-26.7	-11.4
12,551.0	50.40	174.70	12,440.0	103.4	-322.3	8.13	6.17	-7.02	-20.1	-9.6
12,598.0	55.90	177.10	12,468.2	65.9	-319.6	12.39	11.70	5.11	-13.6	-6.3
12,645.0	63.70	182.20	12,491.8	25.3	-319.4	19.05	16.60	10.85	-8.5	-5.7
12,692.0	69.50	185.30	12,510.5	-17.7	-322.3	13.74	12.34	6.60	-5.1	-8.7
12,739.0	75.20	185.10	12,524.7	-62.3	-326.4	12.13	12.13	-0.43	-2.3	-13.0
12,785.0	80.10	182.40	12,534.6	-107.1	-329.3	12.10	10.65	-5.87	0.1	-16.3
12,834.0	84.30	180.60	12,541.2	-155.6	-330.5	9.31	8.57	-3.67	2.7	-17.8
12,881.0	87.10	181.30	12,544.7	-202.5	-331.3	6.14	5.96	1.49	5.4	-19.0
12,973.0	87.80	180.60	12,548.8	-294.3	-332.8	1.08	0.76	-0.76	8.5	-21.1
13,066.0	89.10	179.40	12,551.4	-387.3	-332.8	1.90	1.40	-1.29	10.1	-21.8
13,159.0	90.20	180.30	12,551.9	-480.3	-332.6	1.53	1.18	0.97	9.7	-22.2
13,253.0	90.30	180.60	12,551.5	-574.3	-333.3	0.34	0.11	0.32	8.3	-23.6
13,347.0	89.40	180.20	12,551.8	-668.3	-334.0	1.05	-0.96	-0.43	7.5	-24.9
13,441.0	88.70	178.90	12,553.3	-762.3	-333.3	1.57	-0.74	-1.38	8.1	-24.9
13,535.0	93.80	179.40	12,551.3	-856.2	-331.9	5.45	5.43	0.53	5.0	-24.2
13,629.0	86.90	176.20	12,550.7	-950.1	-328.3	8.09	-7.34	-3.40	3.6	-21.2
13,722.0	90.30	178.10	12,553.0	-1,042.9	-323.6	4.19	3.66	2.04	4.8	-17.3
13,816.0	90.10	177.20	12,552.6	-1,136.8	-319.8	0.98	-0.21	-0.96	3.5	-14.1
13,909.0	88.60	174.10	12,553.7	-1,229.5	-312.7	3.70	-1.61	-3.33	3.6	-7.7
14,003.0	90.40	176.90	12,554.5	-1,323.2	-305.4	3.54	1.91	2.98	3.4	-1.0
14,097.0	88.50	176.10	12,555.4	-1,417.1	-299.6	2.19	-2.02	-0.85	3.3	4.1
14,190.0	89.70	177.70	12,556.9	-1,509.9	-294.6	2.15	1.29	1.72	3.8	8.5





EOG Resources, Inc.

PVA

Company: EOG Resources - Midland  
 Project: Lea County, NM (NAD 27 NME)  
 Site: Hound 30 Fed  
 Well: #701H  
 Wellbore: OH  
 Design: OH

Local Co-ordinate Reference: Well #701H  
 TVD Reference: KB = 25' @ 3342.0usft (H&P 642)  
 MD Reference: KB = 25' @ 3342.0usft (H&P 642)  
 North Reference: Grid  
 Survey Calculation Method: Minimum Curvature  
 Database: EDM 5000.1 Single User Db

Survey

MD (usft)	Inc (°)	Azi (grid_north_azim)	TVD (usft)	N/S (usft)	E/W (usft)	DLeg (°/100usft)	Build (°/100usft)	Turn (°/100usft)	High to Plan (usft)	Right to Plan (usft)
14,283.0	90.30	180.80	12,556.9	-1,602.9	-293.4	3.40	0.65	3.33	2.8	9.0
14,376.0	91.30	180.70	12,555.6	-1,695.9	-294.6	1.08	1.08	-0.11	0.5	7.1
14,470.0	89.80	176.60	12,554.7	-1,789.8	-292.4	4.64	-1.60	-4.36	-1.1	8.7
14,564.0	88.80	175.10	12,555.8	-1,883.6	-285.6	1.92	-1.06	-1.60	-0.8	14.8
14,657.0	90.00	174.50	12,556.8	-1,976.2	-277.1	1.44	1.29	-0.65	-0.5	22.6
14,751.0	89.70	174.80	12,557.0	-2,069.8	-268.4	0.45	-0.32	0.32	-1.0	30.7
14,844.0	90.50	177.30	12,556.9	-2,162.5	-262.0	2.82	0.86	2.69	-1.9	36.4
14,938.0	93.70	180.10	12,553.4	-2,256.4	-259.8	4.52	3.40	2.98	-6.1	37.9
15,032.0	87.10	178.90	12,552.8	-2,350.4	-259.0	7.14	-7.02	-1.28	-7.5	38.0
15,125.0	88.00	179.90	12,556.8	-2,443.3	-258.1	1.45	0.97	1.08	-4.3	38.3
15,219.0	89.90	180.70	12,558.5	-2,537.2	-258.5	2.19	2.02	0.85	-3.3	37.2
15,313.0	89.00	183.10	12,559.4	-2,631.2	-261.7	2.73	-0.96	2.55	-3.1	33.4
15,406.0	91.30	184.90	12,559.1	-2,723.9	-268.1	3.14	2.47	1.94	-4.2	26.2
15,500.0	84.40	183.60	12,562.7	-2,817.6	-275.1	7.47	-7.34	-1.38	-1.2	18.6
15,593.0	89.30	184.50	12,567.8	-2,910.2	-281.7	5.36	5.27	0.97	3.0	11.4
15,694.0	91.60	182.20	12,567.0	-3,011.0	-287.6	3.22	2.28	-2.28	1.4	4.8
15,788.0	91.10	181.00	12,564.8	-3,104.9	-290.2	1.38	-0.53	-1.28	-1.6	1.5
15,882.0	90.10	180.10	12,563.8	-3,198.9	-291.1	1.43	-1.06	-0.96	-3.3	-0.1
15,976.0	91.50	176.20	12,562.5	-3,292.8	-288.1	4.41	1.49	-4.15	-5.4	2.2
16,070.0	92.80	172.60	12,558.9	-3,386.3	-278.9	4.07	1.38	-3.83	-9.6	10.7
16,164.0	88.90	169.70	12,557.5	-3,479.1	-264.4	5.17	-4.15	-3.09	-12.0	24.4
16,258.0	88.10	172.60	12,560.0	-3,572.0	-250.0	3.20	-0.85	3.09	-10.3	38.3
16,351.0	89.80	171.60	12,561.7	-3,664.1	-237.2	2.12	1.83	-1.08	-9.2	50.4
16,446.0	89.10	179.90	12,562.6	-3,758.7	-230.2	8.77	-0.74	8.74	-8.9	56.8
16,540.0	89.40	181.00	12,563.8	-3,852.7	-230.9	1.21	0.32	1.17	-8.3	55.4
16,634.0	88.90	181.70	12,565.2	-3,946.7	-233.1	0.92	-0.53	0.74	-7.6	52.5
16,727.0	87.50	181.80	12,568.2	-4,039.6	-236.0	1.51	-1.51	0.11	-5.3	49.0



EOG Resources, Inc.

PVA

Company: EOG Resources - Midland  
 Project: Lea County, NM (NAD 27 NME)  
 Site: Hound 30 Fed  
 Well: #701H  
 Wellbore: OH  
 Design: OH

Local Co-ordinate Reference: Well #701H  
 TVD Reference: KB = 25' @ 3342.0usft (H&P 642)  
 MD Reference: KB = 25' @ 3342.0usft (H&P 642)  
 North Reference: Grid  
 Survey Calculation Method: Minimum Curvature  
 Database: EDM 5000.1 Single User Db

Survey											
MD (usft)	Inc (°)	Azi (grid_north_azim)	TVD (usft)	N/S (usft)	E/W (usft)	DLeg (°/100usft)	Build (°/100usft)	Turn (°/100usft)	High to Plan (usft)	Right to Plan (usft)	
16,820.0	88.10	178.60	12,571.7	-4,132.5	-236.3	3.50	0.65	-3.44	-2.5	48.0	
16,914.0	87.70	177.90	12,575.2	-4,226.4	-233.4	0.86	-0.43	-0.74	0.3	50.2	
17,007.0	88.00	184.40	12,578.7	-4,319.2	-235.3	6.99	0.32	6.99	3.3	47.7	
17,101.0	88.60	186.40	12,581.5	-4,412.8	-244.1	2.22	0.64	2.13	5.4	38.1	
17,194.0	90.80	186.70	12,581.9	-4,505.2	-254.7	2.39	2.37	0.32	5.1	26.9	
17,288.0	95.30	186.70	12,576.9	-4,598.4	-265.7	4.79	4.79	0.00	-0.8	15.3	
17,401.0	90.90	183.50	12,570.8	-4,710.7	-275.7	4.81	-3.89	-2.83	-7.5	4.4	
17,495.0	89.80	180.90	12,570.3	-4,804.6	-279.3	3.00	-1.17	-2.77	-8.8	0.2	
17,588.0	87.40	179.00	12,572.5	-4,897.6	-279.2	3.29	-2.58	-2.04	-7.2	-0.4	
17,681.0	87.80	179.50	12,576.4	-4,990.5	-278.0	0.69	0.43	0.54	-3.9	0.1	
17,774.0	87.50	180.00	12,580.2	-5,083.4	-277.6	0.63	-0.32	0.54	-0.8	-0.1	
17,867.0	88.30	178.80	12,583.7	-5,176.4	-276.6	1.55	0.86	-1.29	1.9	0.2	
17,960.0	88.40	178.70	12,586.3	-5,269.3	-274.6	0.15	0.11	-0.11	3.9	1.6	
18,053.0	92.50	179.70	12,585.6	-5,362.3	-273.3	4.54	4.41	1.08	2.5	2.2	
18,147.0	92.80	179.80	12,581.3	-5,456.2	-272.9	0.34	0.32	0.11	-2.5	1.9	
18,239.0	89.50	179.80	12,579.4	-5,548.1	-272.6	3.59	-3.59	0.00	-5.2	1.6	
18,332.0	88.80	179.90	12,580.8	-5,641.1	-272.3	0.76	-0.75	0.11	-4.8	1.2	
18,426.0	87.10	177.60	12,584.1	-5,735.0	-270.3	3.04	-1.81	-2.45	-2.5	2.5	
18,520.0	90.20	179.20	12,586.4	-5,829.0	-267.7	3.71	3.30	1.70	-1.3	4.5	
18,612.0	90.20	178.60	12,586.0	-5,920.9	-265.9	0.65	0.00	-0.65	-2.6	5.6	
18,706.0	89.80	178.30	12,586.0	-6,014.9	-263.3	0.53	-0.43	-0.32	-3.6	7.5	
18,800.0	90.70	178.10	12,585.6	-6,108.9	-260.4	0.98	0.96	-0.21	-5.1	9.7	
18,893.0	89.50	180.30	12,585.5	-6,201.8	-259.1	2.69	-1.29	2.37	-6.2	10.4	
18,987.0	88.90	180.60	12,586.8	-6,295.8	-259.8	0.71	-0.64	0.32	-5.9	9.0	
19,081.0	90.50	180.80	12,587.3	-6,389.8	-261.0	1.72	1.70	0.21	-6.5	7.1	
19,175.0	88.40	180.80	12,588.2	-6,483.8	-262.3	2.23	-2.23	0.00	-6.6	5.2	
19,268.0	88.40	181.40	12,590.8	-6,576.7	-264.1	0.64	0.00	0.65	-5.0	2.7	



Company: EOG Resources - Midland  
 Project: Lea County, NM (NAD 27 NME)  
 Site: Hound 30 Fed  
 Well: #701H  
 Wellbore: OH  
 Design: OH

Local Co-ordinate Reference: Well #701H  
 TVD Reference: KB = 25' @ 3342.0usft (H&P 642)  
 MD Reference: KB = 25' @ 3342.0usft (H&P 642)  
 North Reference: Grid  
 Survey Calculation Method: Minimum Curvature  
 Database: EDM 5000.1 Single User Db

MD (usft)	Inc (°)	Azi (grid_north_azim)	TVD (usft)	N/S (usft)	E/W (usft)	DLeg (°/100usft)	Build (°/100usft)	Turn (°/100usft)	High to Plan (usft)	Right to Plan (usft)
19,361.0	87.10	180.90	12,594.4	-6,669.6	-265.9	1.50	-1.40	-0.54	-2.4	0.2
19,455.0	89.20	180.90	12,597.5	-6,763.6	-267.4	2.23	2.23	0.00	-0.4	-2.0
19,548.0	89.30	179.50	12,598.7	-6,856.6	-267.7	1.51	0.11	-1.51	-0.2	-3.0
19,642.0	89.90	178.10	12,599.3	-6,950.5	-265.8	1.62	0.64	-1.49	-0.5	-1.7
19,735.0	89.30	176.70	12,600.0	-7,043.4	-261.6	1.64	-0.65	-1.51	-0.9	1.9
19,783.0	89.80	176.40	12,600.4	-7,091.4	-258.7	1.21	1.04	-0.62	-1.0	4.4
<b>Last MWD Survey</b>										
19,838.0	89.80	176.40	12,600.6	-7,146.2	-255.2	0.00	0.00	0.00	-1.4	7.5
<b>Projection To Bit</b>										

Measured Depth (usft)	Vertical Depth (usft)	Local Coordinates		Comment
		+N/-S (usft)	+E/-W (usft)	
19,783.0	12,600.4	-7,091.4	-258.7	Last MWD Survey
19,838.0	12,600.6	-7,146.2	-255.2	Projection To Bit

Checked By: \_\_\_\_\_ Approved By: \_\_\_\_\_ Date: \_\_\_\_\_