

**DISTRICT IV**  
1220 S. St. Francis Dr., Santa Fe, NM 8750p  
Phone (505) 476-3460 Fax: (505) 476-3462

1220 South St. Francis Dr.  
Santa Fe, New Mexico 87505

HOBBBS OCD  
Department  
VISION  
Mr.  
505  
JUL 10 2017  
RECEIVED

one copy to appropriate  
District Office

## WELL LOCATION AND ACREAGE DEDICATION

☐ AMENDED REPORT

API Number 30-025-41647	Pool Code 96682	Pool Name Tristē Draw; Bone Spring, East
Property Code \$40372	Property Name CONVOY BUC STATE	Well Number 1H
OGRID No. 7377	Operator Name EOG RESOURCES INC	Elevation 3481

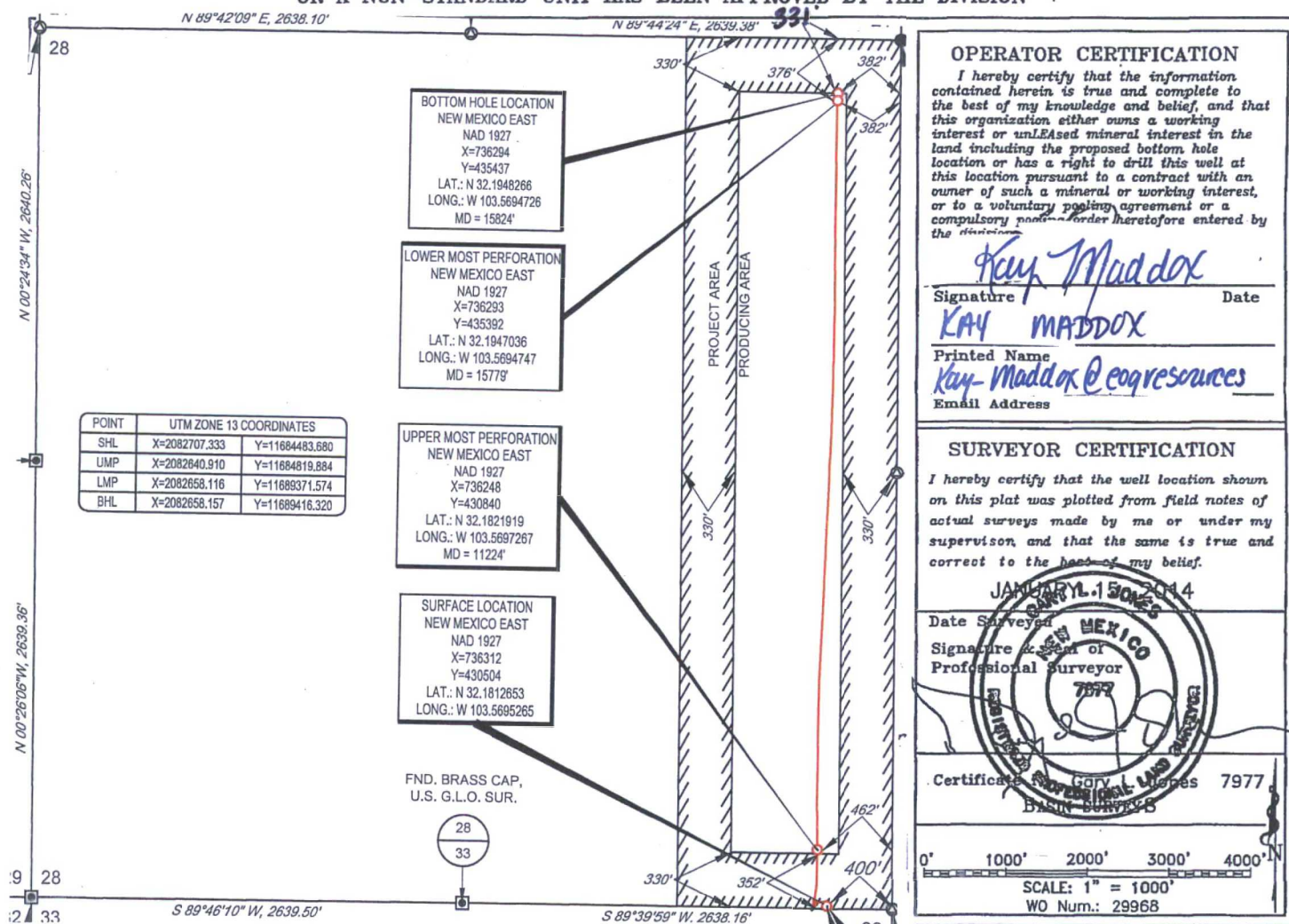
### Surface Location

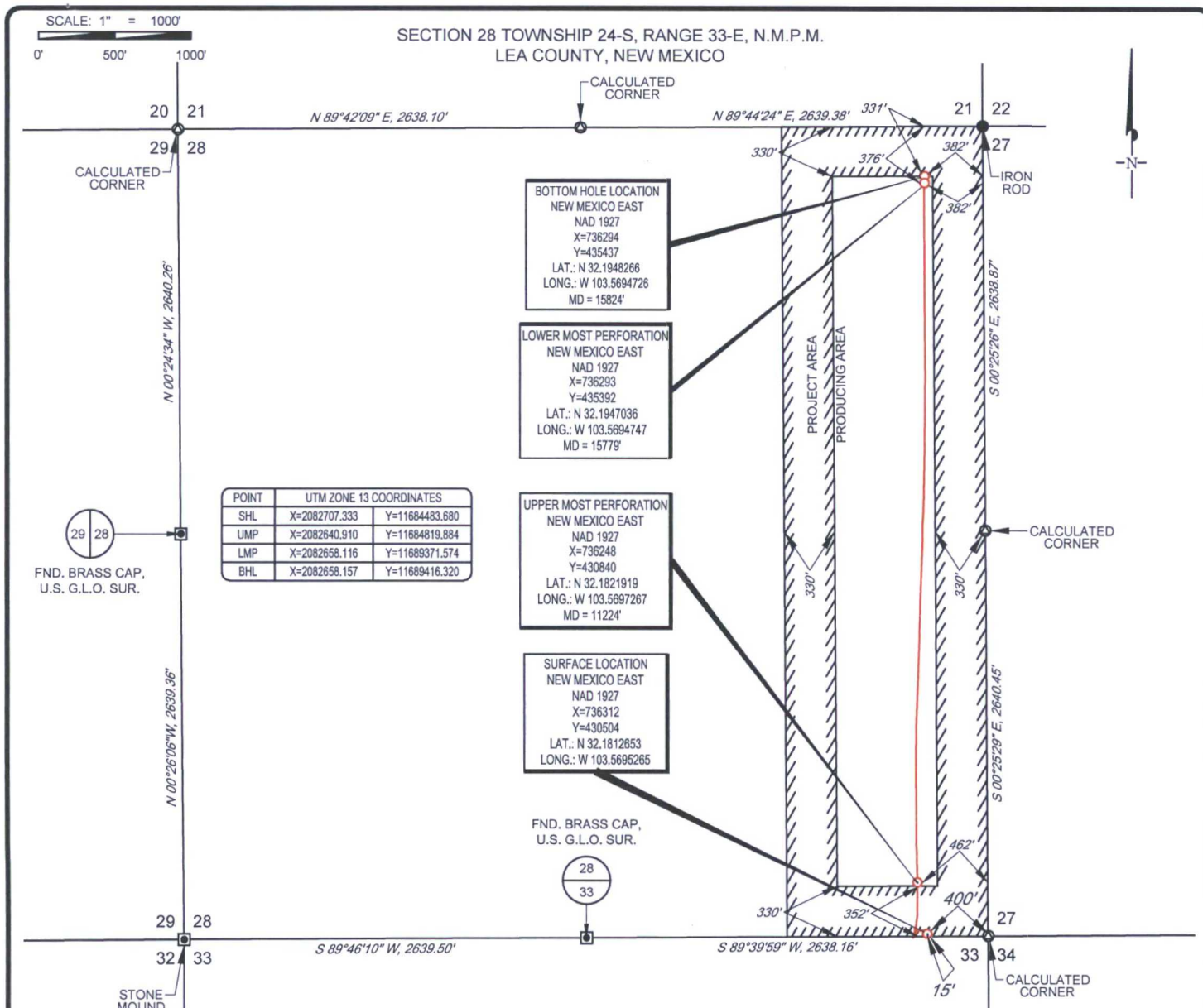
UL or lot No.	Section	Township	Range	Lot Idn	Feet from the	SOUTH/South line	Feet from the	East/EAST line	County
P	28	24 S	33 E		15	SOUTH	400	EAST	LEA

## Bottom Hole Location If Different From Surface

UL or lot No. A	Section 28	Township 24 S	Range 33 E	Lot Idn	Feet from the 331	SOUTH/South line NORTH	Feet from the 382	East/EAST line EAST	County LEA
Dedicated Acres 160	Joint or Infill	Consolidation Code	Order No.						

NO ALLOWABLE WILL BE ASSIGNED TO THIS COMPLETION UNTIL ALL INTERESTS HAVE BEEN CONSOLIDATED  
OR A NON-STANDARD UNIT HAS BEEN APPROVED BY THE DIVISION





LEASE NAME & WELL NO.: CONVOY BUC STATE #1H

SECTION 28 TWP 24-S RGE 33-E SURVEY N.M.P.M.

COUNTY LEA STATE NM ELEVATION 3476'

DESCRIPTION 15' FSL & 400' FEL



**TOPOGRAPHIC**  
LOYALTY INNOVATION LEGACY

1400 EVERMAN  
PARKWAY, Ste. 197 • FT. WORTH, TEXAS 76140 TELEPHONE:  
(817) 744-7512 • FAX (817) 744-7548  
2903 NORTH BIG SPRING • MIDLAND, TEXAS 79705  
TELEPHONE: (432) 682-1653 OR (800) 767-1653 • FAX (432) 682-1743  
WWW.TOPOGRAPHIC.COM

**eog resources, Inc.**



Michael Blake Brown, P.S. No. 18329  
JUNE 20, 2017

CONVOY BUC STATE #1H  
AS-COMPLETED

REVISION:

DATE: 06/20/17

FILE:AD\_CONVOY\_BUC\_STATE\_1H

DRAWN BY: MML

SHEET: 1 OF 1

NOTES:

1. ORIGINAL DOCUMENT SIZE: 8.5" X 11"
2. ALL BEARINGS, DISTANCES, AND COORDINATE VALUES CONTAINED HEREIN ARE GRID BASED UPON THE NEW MEXICO STATE PLANE COORDINATE SYSTEM, EAST ZONE, U.S. SURVEY FEET, NORTH AMERICAN DATUM 1983.
3. THIS WELL LOCATION SHOWN HEREON HAS BEEN SURVEYED ON THE GROUND UNDER MY SUPERVISION AND PREPARED ACCORDING TO THE EVIDENCE FOUND AT THE TIME OF SURVEY, AND DATA PROVIDED BY EOG RESOURCES, INC. THIS CERTIFICATION IS MADE AND LIMITED TO THOSE PERSONS OR ENTITIES SHOWN ON THE FACE OF THIS PLAT AND IS NON-TRANSFERABLE. THIS SURVEY IS CERTIFIED FOR THIS TRANSACTION ONLY.