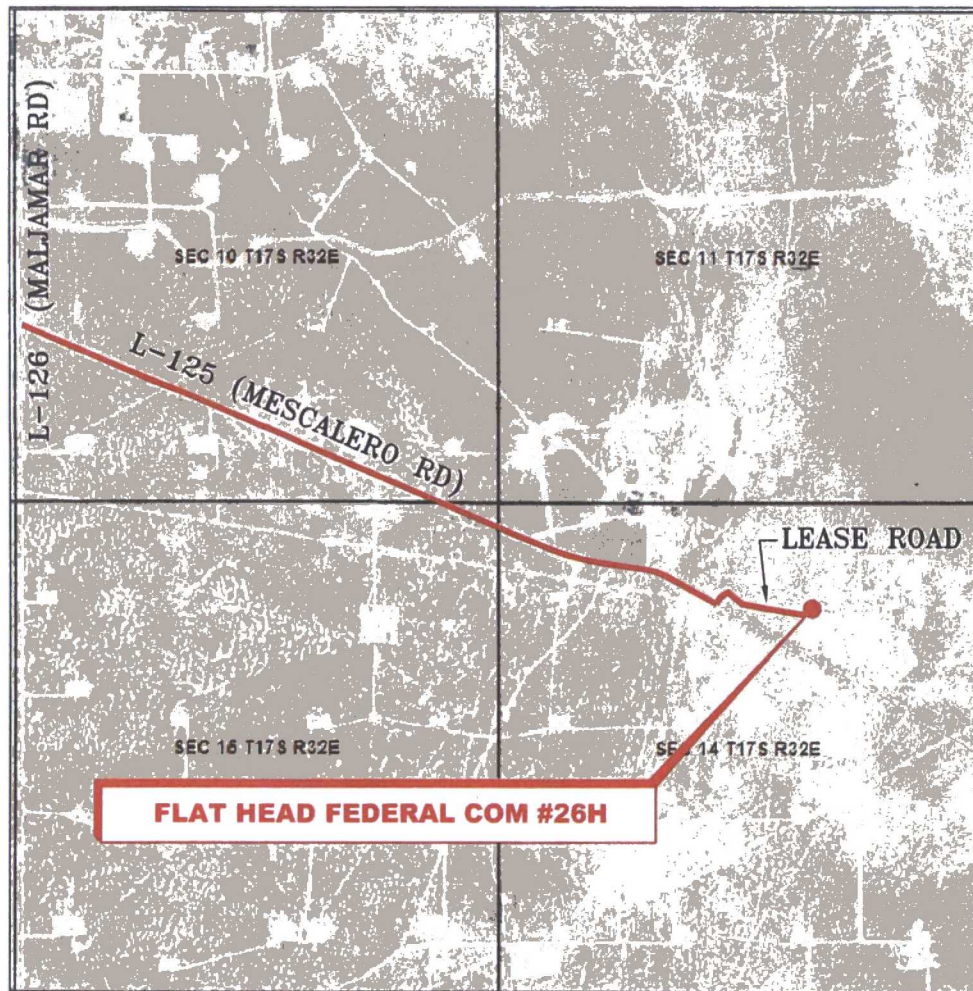


VICINITY MAP

NOT TO SCALE



*SECTION 14, TWP. 17 SOUTH, RGE. 32 EAST,
N. M. P. M., LEA CO., NEW MEXICO*

OPERATOR: COG Operating, LLC
LEASE: Flat Head Federal Com
WELL NO.: 26H

LOCATION: 1123' FNL & 1823' FEL
ELEVATION: 4089'

Firm No.: TX 10193838 NM 4655451

Copyright 2015 - All Rights Reserved

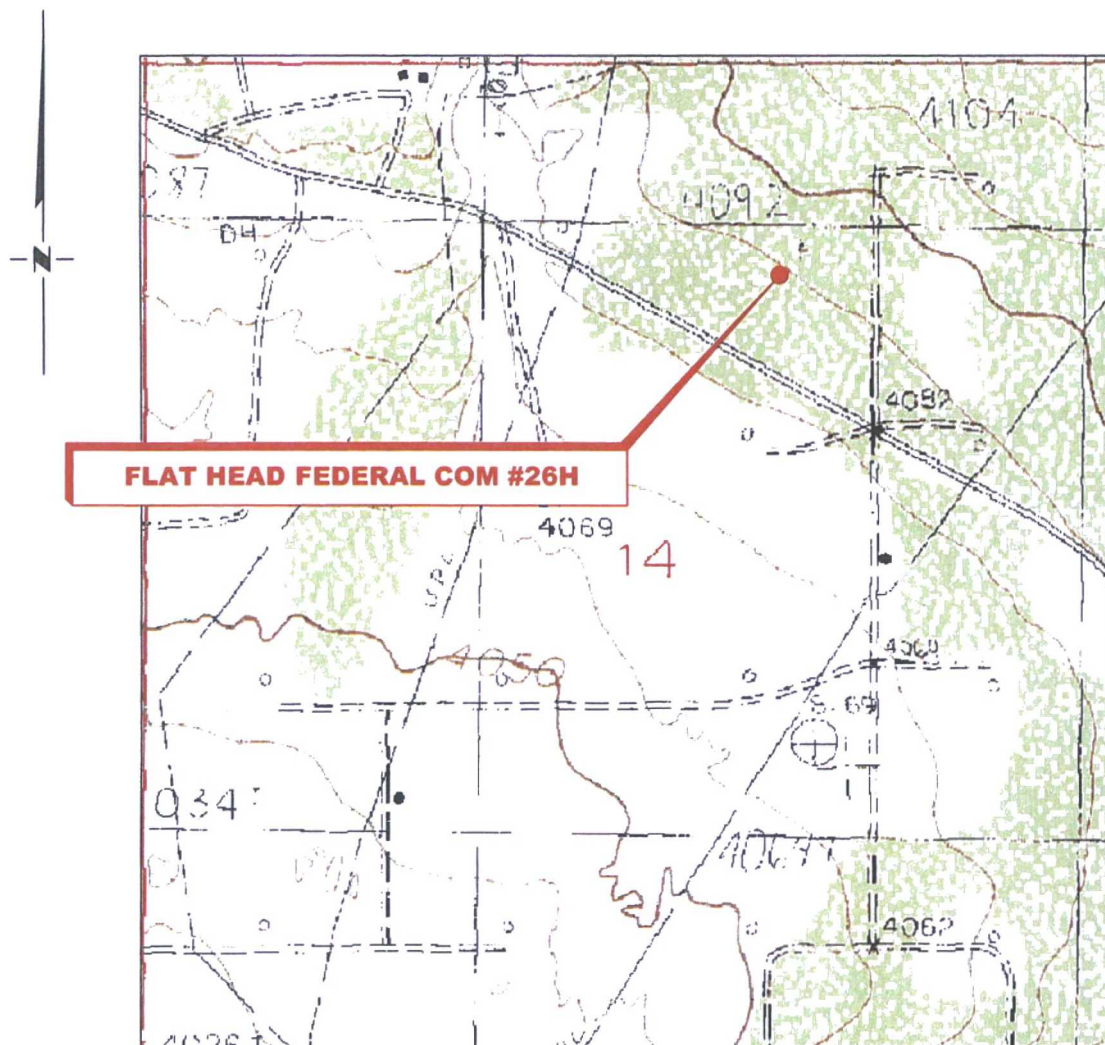
NO.	REVISION	DATE
JOB NO.: LS1701024		
DWG. NO.: 1701024VM		

RRC

308 W. BROADWAY ST., HOBBS, NM 88240 (575) 964-8200

SCALE: N. T. S.
DATE: 7-1-2015
SURVEYED BY: ML/AA
DRAWN BY: JC
APPROVED BY: RMH
SHEET : 1 OF 1

LOCATION VERIFICATION MAP



*SECTION 14, TWP. 17 SOUTH, RGE. 32 EAST,
N. M. P. M., LEA CO., NEW MEXICO*

OPERATOR: COG Operating, LLC
LEASE: Flat Head Federal Com
WELL NO.: 26H
ELEVATION: 4089'

LOCATION: 1123' FNL & 1823' FEL
CONTOUR INTERVAL: 10'
USGS TOPO. SOURCE MAP:
Maljamar, NM (P. E. 1985)

Firm No.: TX 10193838 NM 4655451

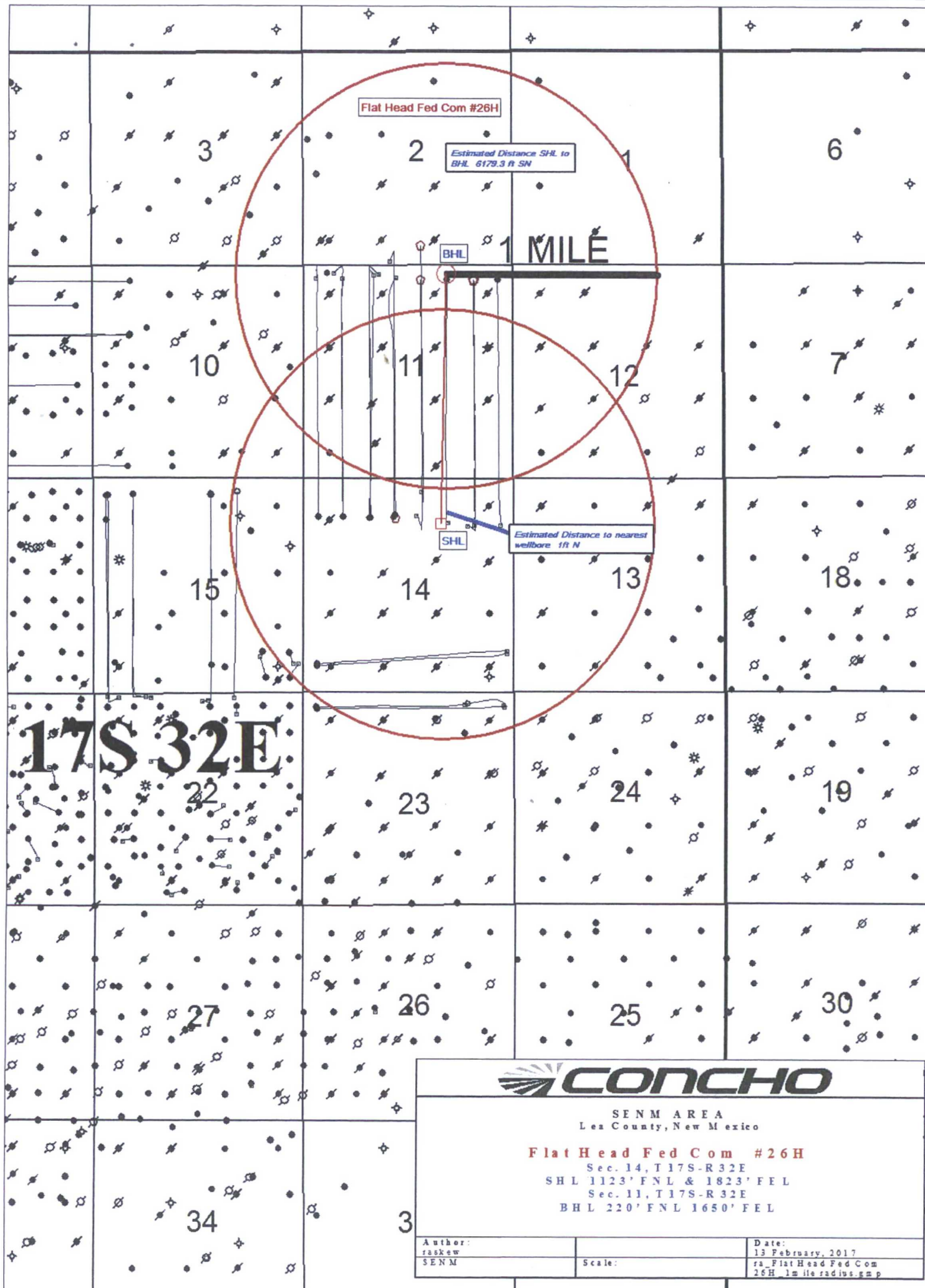
Copyright 2015 - All Rights Reserved

NO.	REVISION	DATE
JOB NO.: LS1701024		
DWG. NO.: 1701024LVM		

RRC

308 W. BROADWAY ST., HOBBS, NM 88240 (575) 964-8200

SCALE: 1" = 1000
DATE: 7/1/2015
SURVEYED BY: ML/AA
DRAWN BY: JC
APPROVED BY: RMH
SHEET : 1 OF 1



SENM AREA
Lea County, New Mexico

Flat Head Fed Com #26H

Sec. 14, T17S-R32E
SHL 1123' FNL & 1823' FEL
Sec. 11, T17S-R32E
BHL 220' FNL 1650' FEL

Author: raskew SENM	Scale:	Date: 13 February, 2017 ra_Flat Head Fed Com 26H_1m radius.gmp
---------------------------	--------	---

Caswell Ranch Water Supply Map



Loco Hills Water Disposal Co. Water Well Map



WELL SITE AND ROAD CONSTRUCTION

1. Source of Construction Materials and Location "Turn-Over" Procedure:

Obtaining caliche: The primary way of obtaining caliche to build locations and roads will be by "turning over" the location. This means, caliche will be obtained from the actual well sight. A caliche permit will be obtained from BLM prior to pushing up any caliche. 2400 cu. Yards is max amount of caliche needed for pad and roads. Amount will vary for each pad. The procedure below has been approved by BLM personnel:

- A. The top 6 inches of topsoil is pushed off and stockpiled along the side of the location.**
- B. An approximate 120' X 120' area is used within the proposed well site to remove caliche.**
- C. Subsoil is removed and piled alongside the 120' by 120' area within the pad site.**
- D. When caliche is found, material will be stock piled within the pad site to build the location and road.**
- E. Then subsoil is pushed back in the hole and caliche is spread accordingly across entire location and road.**
- F. Once well is drilled, the stock piled top soil will be used for interim reclamation and spread along areas where caliche is picked up and the location size is reduced. Neither caliche nor subsoil will be stock piled outside of the well pad. Topsoil will be stockpiled along the edge of the pad as depicted in attached plat.**
 - In the event that no caliche is found onsite, caliche will be hauled in from a BLM approved caliche pit.

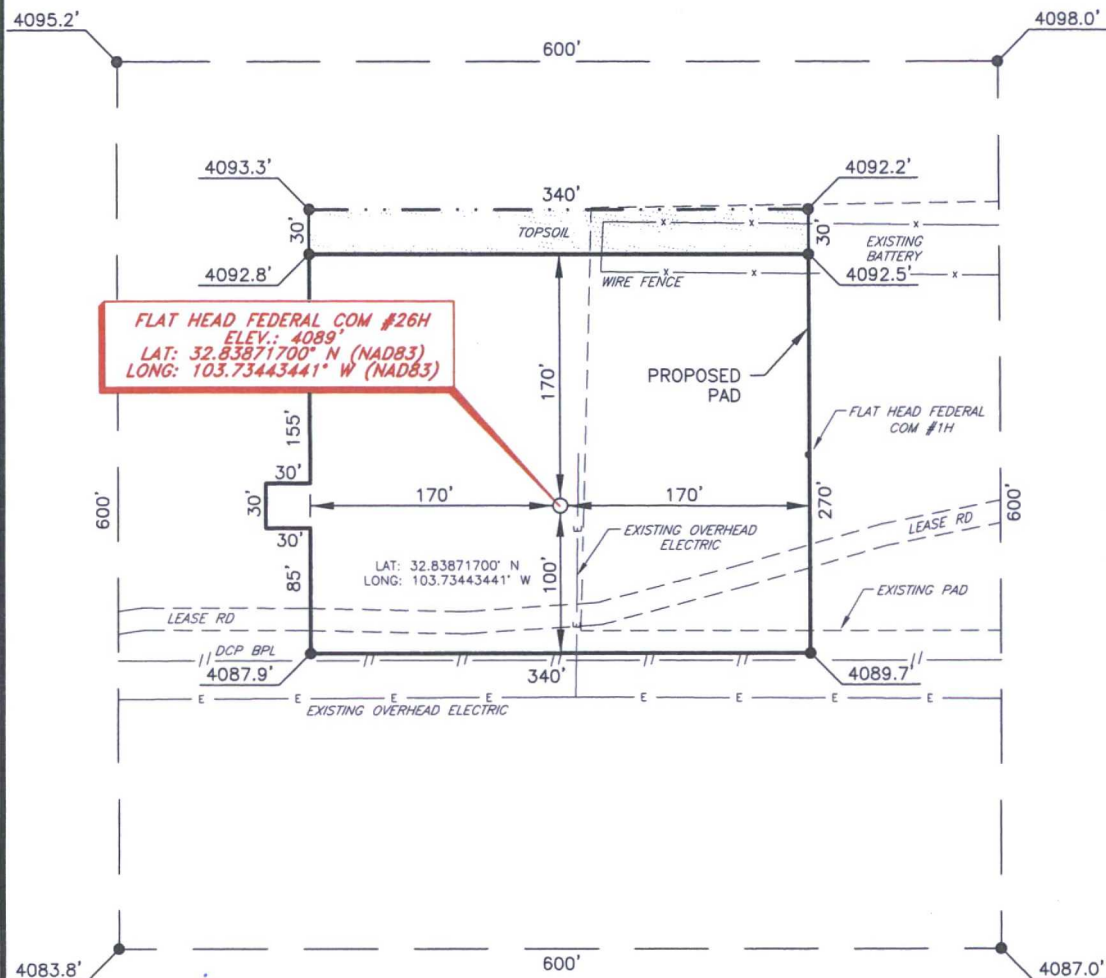
Caswell Ranch Caliche Pit Map



NMSLO Caliche Pit



COG OPERATING, LLC
 FLAT HEAD FEDERAL COM #26H
 (1123' FNL & 1823' FEL)
 SECTION 14, T17S, R32E
 N. M. P. M., LEA CO., NEW MEXICO



DIRECTIONS TO LOCATION

From the intersection of CR-126 (Maljamar Road) and CR-125 (Mescalero Road);
 Go Southeast on CR-125 for approx. 1.9 miles to lease road on left;
 Turn left and go North turning East following lease road approx. 0.3 miles to this location.

SCALE: 1" = 100'
 0 50 100
 BEARINGS ARE
 NAD 83 GRID - NM EAST
 DISTANCES ARE
 GROUND.

I, R. M. Howett, a N. M. Professional Surveyor, hereby certify that I prepared this unclassified survey of a well location from an actual survey made on the ground under my direct supervision, said survey and plat meet the Min. Stds. for Land Surveying in the State of N. M. and are true and correct to the best of my knowledge and belief.

Robert M. Howett

Robert M. Howett NM PS 19680



Firm No.: TX 10193838 NM 4655451

Copyright 2015 - All Rights Reserved

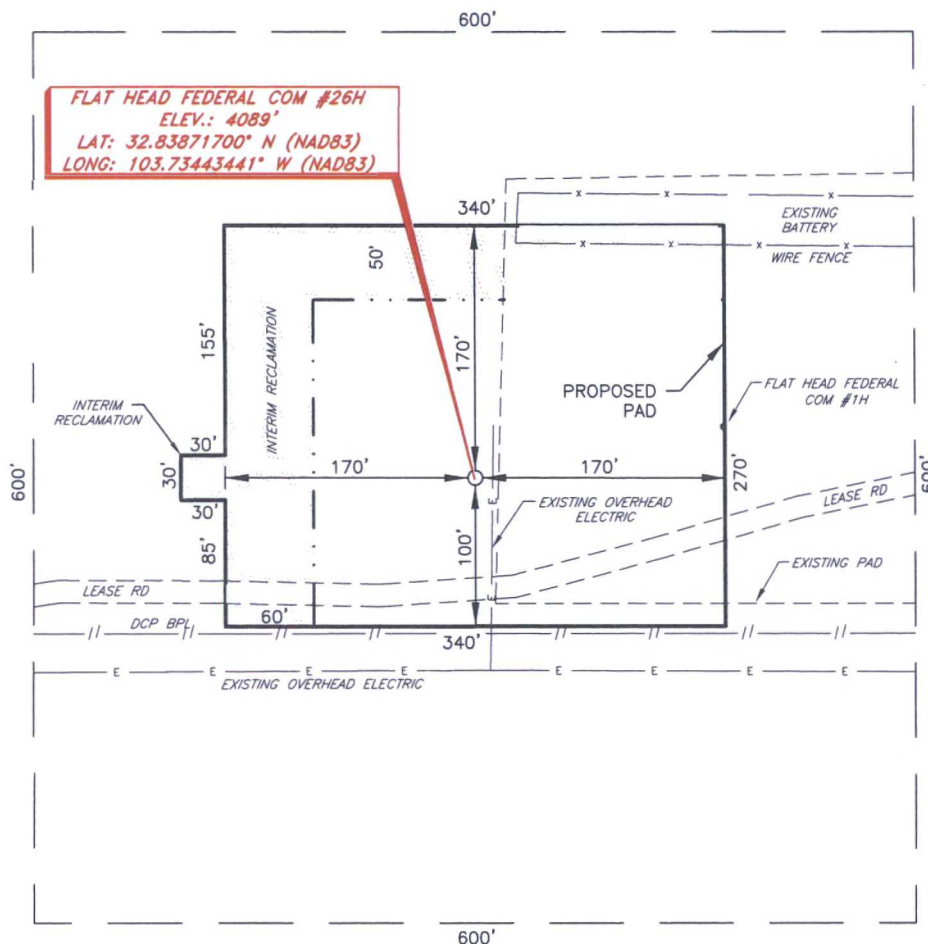
NO.	REVISION	DATE
JOB NO.:	LS1701024	
DWG. NO.:	1701024PAD	

RRC

308 W. BROADWAY ST., HOBBS, NM 88240 (575) 964-8200

SCALE: 1" = 100'
DATE: 7-1-2015
SURVEYED BY: ML/AA
DRAWN BY: JC
APPROVED BY: RMH
SHEET : 1 OF 1

COG OPERATING, LLC
 FLAT HEAD FEDERAL COM #26H
 (1123' FNL & 1823' FEL)
 SECTION 14, T17S, R32E
 N. M. P. M., LEA CO., NEW MEXICO



DIRECTIONS TO LOCATION

From the intersection of CR-126 (Majamar Road) and CR-125 (Mescalero Road);
 Go Southeast on CR-125 for approx. 1.9 miles to lease road on left;
 Turn left and go North turning East following lease road approx. 0.3 miles to this location.

SCALE: 1" = 100'
 0 50 100
 BEARINGS ARE
 NAD 83 GRID - NM EAST
 DISTANCES ARE
 GROUND.

I, R. M. Howett, a N. M. Professional Surveyor, hereby certify that I prepared this unclassified survey of a well location from an actual survey made on the ground under my direct supervision, said survey and plat meet the Min. Stds. for Land Surveying in the State of N. M. and are true and correct to the best of my knowledge and belief.

Robert M. Howett

Robert M. Howett NM PS 19680



Firm No.: TX 10193838 NM 4655451

Copyright 2015 - All Rights Reserved

NO.	REVISION	DATE
JOB NO.:	LS1701024	
DWG. NO.:	1701024REC	

RRC

308 W. BROADWAY ST., HOBBS, NM 88240 (575) 964-8200

SCALE: 1" = 100'
DATE: 7-1-2015
SURVEYED BY: ML/AA
DRAWN BY: JC
APPROVED BY: RMH
SHEET : 1 OF 1

Flat Head Federal Com #26H Surface Flowlines Map

