

## **NOTES REGARDING THE BLOWOUT PREVENTERS**

### **Master Drilling Plan Eddy County, New Mexico**

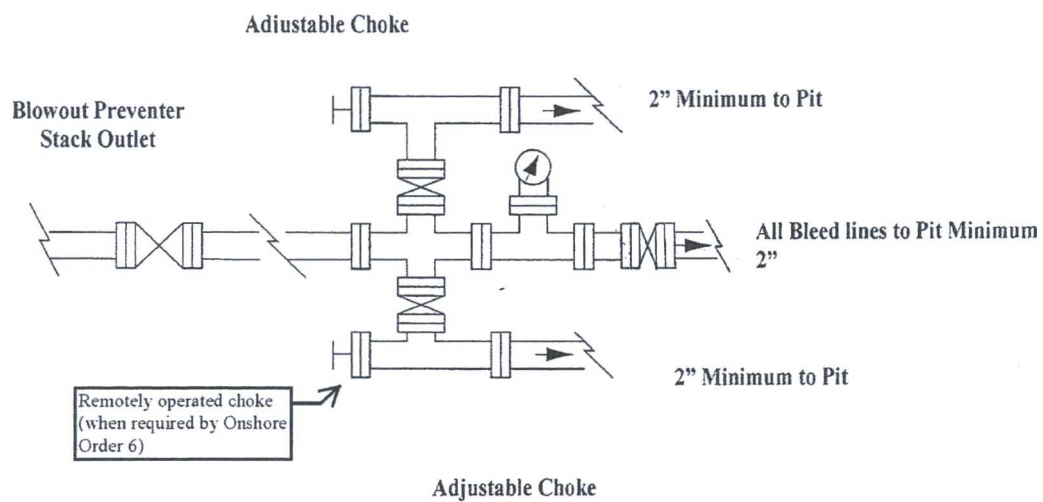
1. Drilling nipple to be so constructed that it can be removed without use of a welder through rotary table opening, with minimum I.D. equal to preventer bore.
2. Wear ring to be properly installed in head.
3. Blow out preventer and all fittings must be in good condition, 2000 psi WP minimum.
4. All fittings to be flanged.
5. Safety valve must be available on rig floor at all times with proper connections, valve to be full 2000 psi WP minimum.
6. All choke and fill lines to be securely anchored especially ends of choke lines.
7. Equipment through which bit must pass shall be at least as large as the diameter of the casing being drilled through.
8. Kelly cock on Kelly.
9. Extension wrenches and hands wheels to be properly installed.
10. Blow out preventer control to be located as close to driller's position as feasible.
11. Blow out preventer closing equipment to include minimum 40-gallon accumulator, two independent sources of pump power on each closing unit installation all API specifications.

# COG Operating LLC

## Exhibit #9

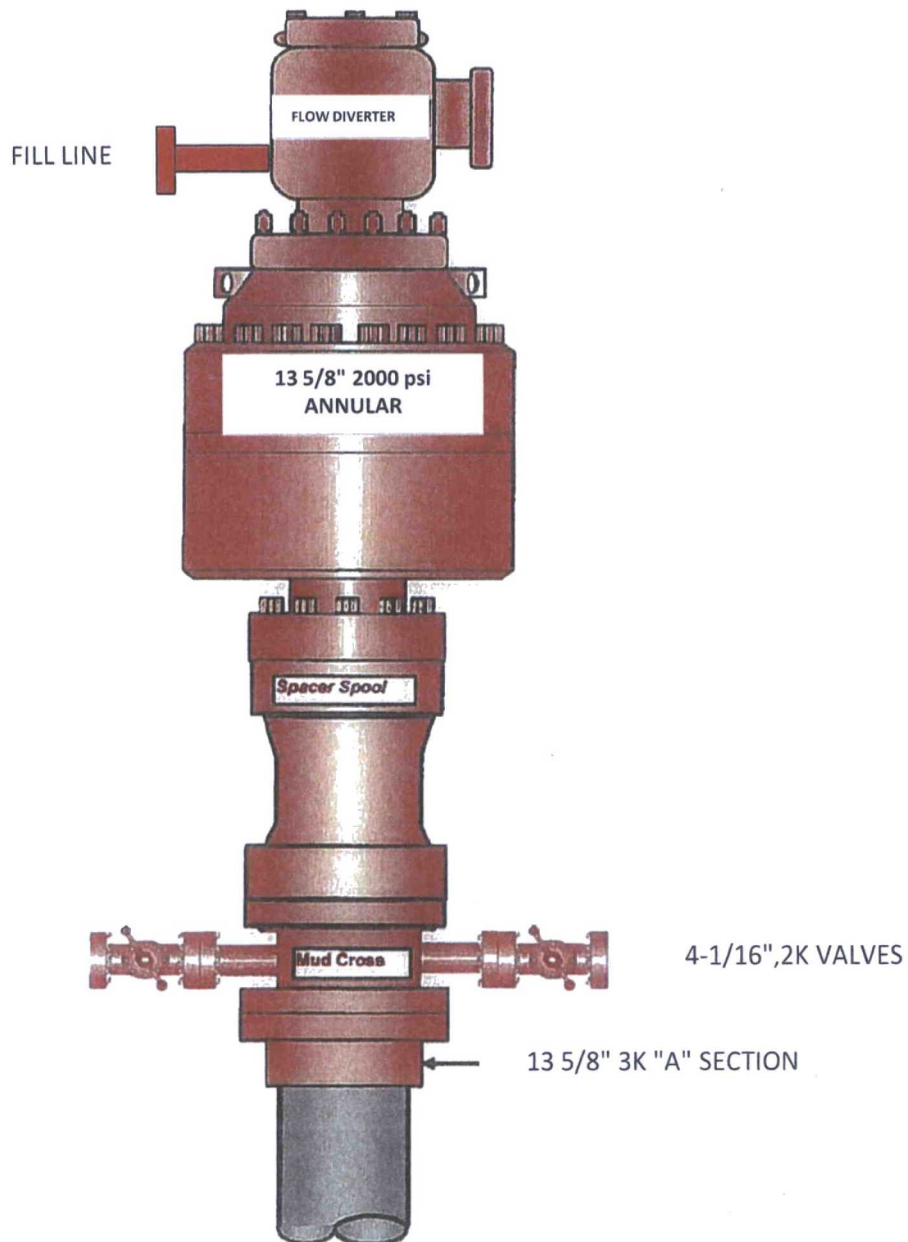
### Choke Schematic

Choke Manifold Requirement (2000 psi WP)



# Exhibit #10

## 13 5/8" 2K ANNULAR



COG Operating LLC

Flat Head Federal Com #26H - H2S Safety Equipment Diagram

Secondary Egress →

