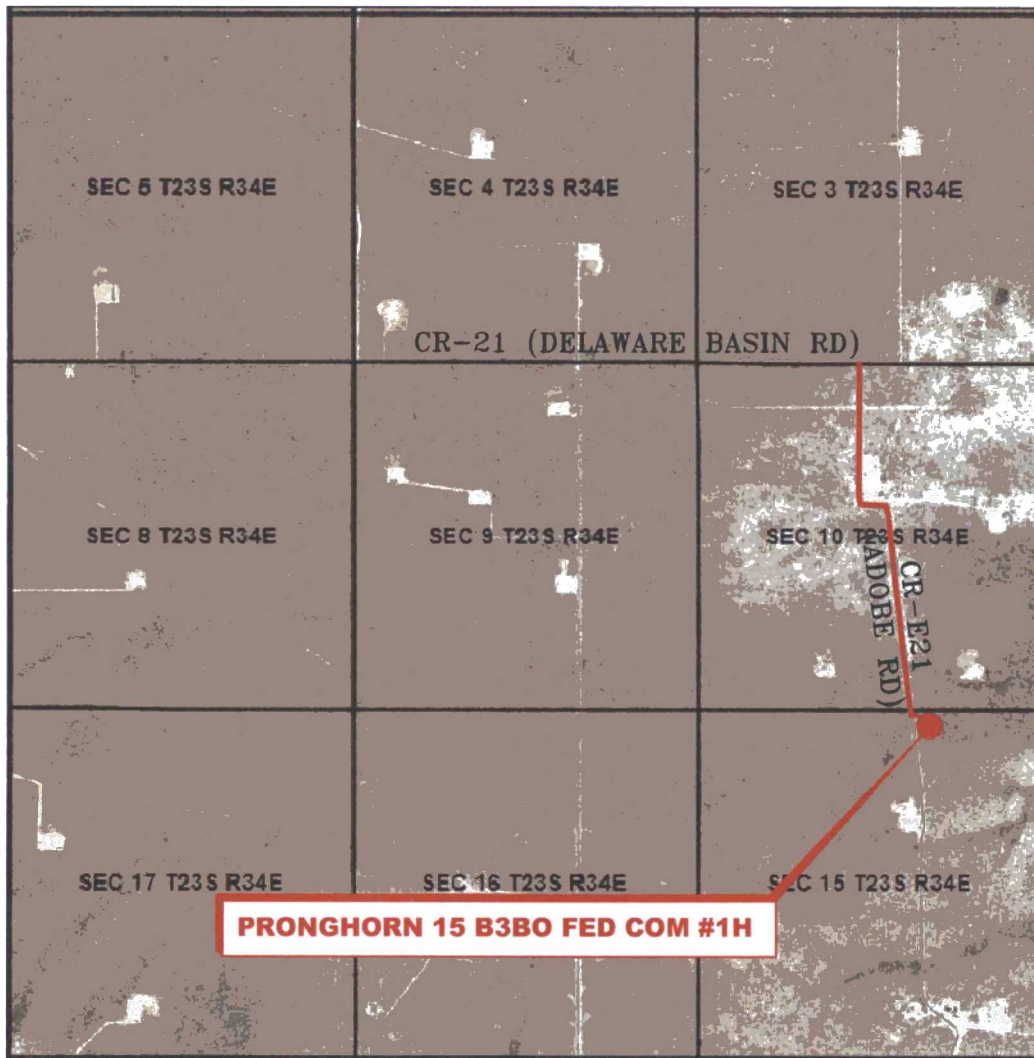


VICINITY MAP

NOT TO SCALE



*SECTION 15, TWP. 23 SOUTH, RGE. 34 EAST,
N. M. P. M., LEA COUNTY, NEW MEXICO*

OPERATOR: Mewbourne Oil Company
LEASE: Pronghorn 15 B3BO Fed Com
WELL NO.: 1H

LOCATION: 185' FNL & 1700' FEL
ELEVATION: 3394'

Firm No.: TX 10193838 NM 4655451

Copyright 2015 - All Rights Reserved

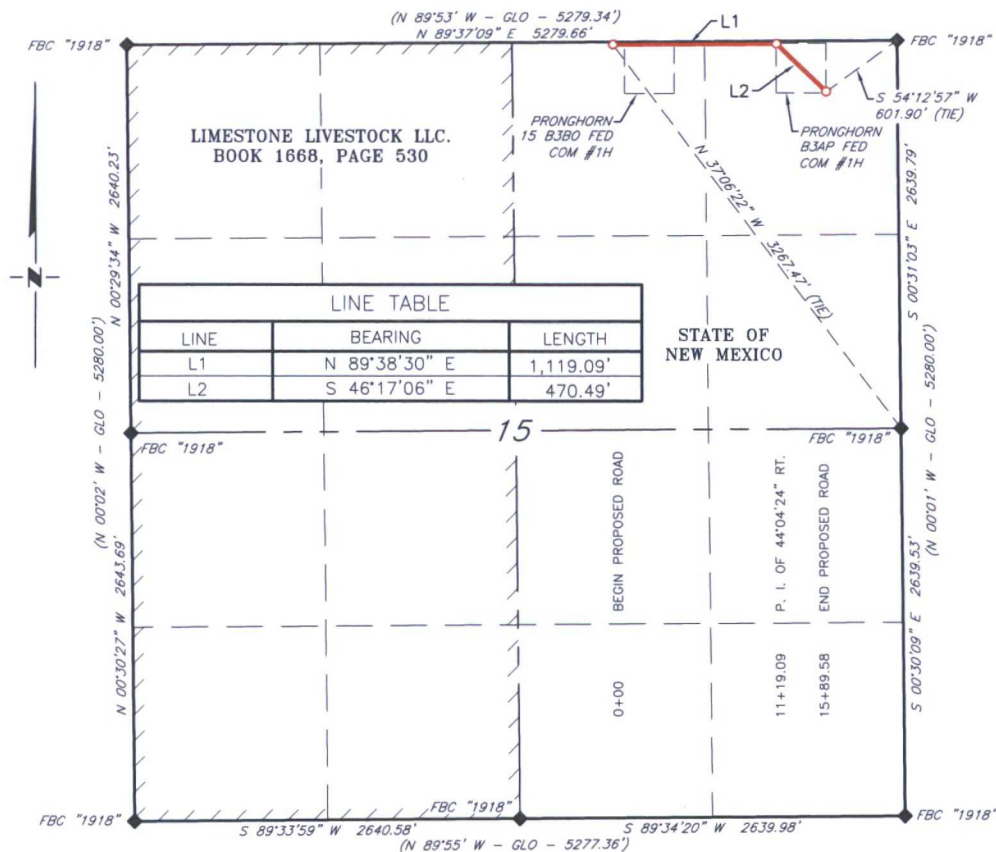
NO.	REVISION	DATE
JOB NO.: LS1504150		
DWG. NO.: 1504150VM		

RRC

308 W. BROADWAY ST., HOBBS, NM 88240 (575) 964-8200

SCALE: N. T. S.
DATE: 4-29-15
SURVEYED BY: ML/AA
DRAWN BY: JC
APPROVED BY: RMH
SHEET : 1 OF 1

MEWBOURNE OIL COMPANY
PROPOSED ACCESS ROAD FROM EXISTING COUNTY RD E-21 (ADOBE RD)
TO THE PRONGHORN B3AP FED COM #1H WELL LOCATION
SECTION 15, T23S, R34E, N. M. P. M., LEA CO., NEW MEXICO



DESCRIPTION

A strip of land 20 feet wide, being 1,589.58 feet or 96.338 rods in length lying in Section 15, Township 23 South, Range 34 East, N. M. P. M., Lea County, New Mexico, being 10 feet left and 10 feet right of the following described survey of a centerline across State of New Mexico land:

BEGINNING at Engr. Sta. 0+00, a point in the Northeast quarter of Section 15, which bears N 37°06'22" W, 3,267.47 feet, from a brass cap, stamped "1918", found for the East quarter corner of Section 15;

Thence N 89°38'30" E, 1,119.90 feet, to Engr. Sta. 11+19.90, a P. I. of 44°04'24" right;

Thence S 46°17'06" E, 470.49 feet, to Engr. Sta. 15+89.58, the End of Survey, a point which bears, S 54°12'57" W, 601.90 feet, from a brass cap, stamped "1918", found for the Northeast corner of Section 15.

Said strip of land contains 0.730 acres, more or less, and is allocated by forties as follows::

NW 1/4 NE 1/4	38.044 Rods	0.288 Acres
NE 1/4 NE 1/4	58.294 Rods	0.442 Acres

SCALE: 1" = 1000'

0 500 1000

BEARINGS ARE GRID NAD 27
 NM EAST
 DISTANCES ARE HORIZ. GROUND.

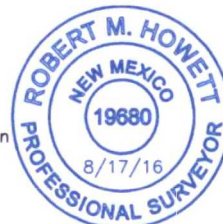
LEGEND

() RECORD DATA - GLO
 FOUND MONUMENT
 AS NOTED
 PROPOSED ROAD

I, R. M. Howett, a N. M. Professional Surveyor, hereby certify that I prepared this plat from an actual survey made on the ground under my direct supervision, said survey and plat meet the Min. Stds. for Land Surveying in the State of N. M. and are true and correct to the best of my knowledge and belief.

Robert M. Howett

Robert M. Howett NM PS 19680



Firm No.: TX 10193838 NM 4655451

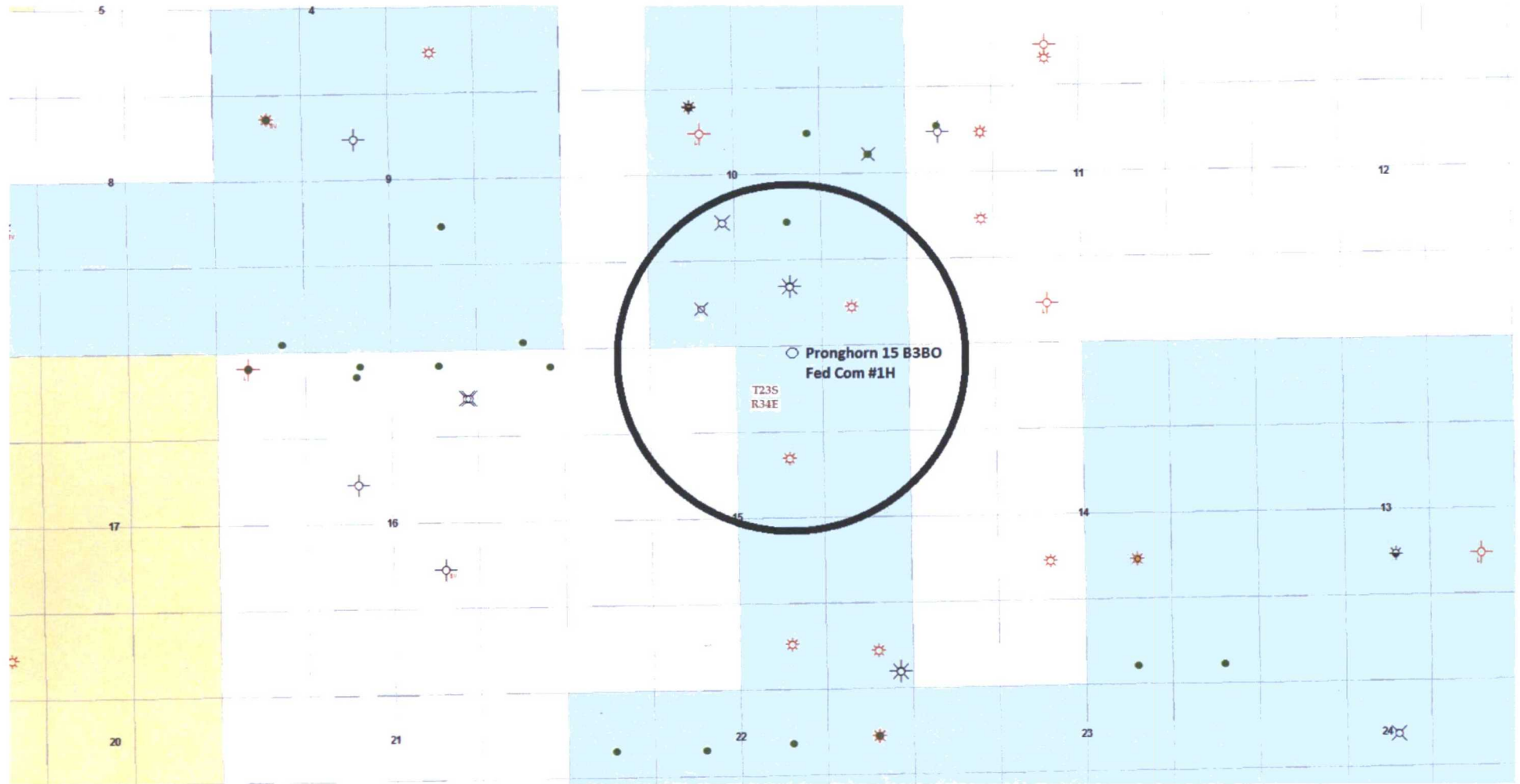
Copyright 2015 - All Rights Reserved

NO.	REVISION	DATE
JOB NO.:	LS1504150A	
DWG. NO.:	1504150RD2	

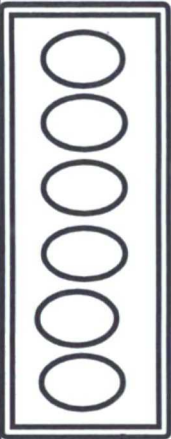
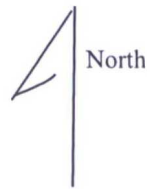
RRC

308 W. BROADWAY ST., HOBBS, NM 88240 (575) 964-8200

SCALE: 1"=1000'
 DATE: 8-17-2016
 SURVEYED BY: ML
 DRAWN BY: CMJ
 APPROVED BY: RMH
 SHEET : 1 OF 1



Road



Production Facilities

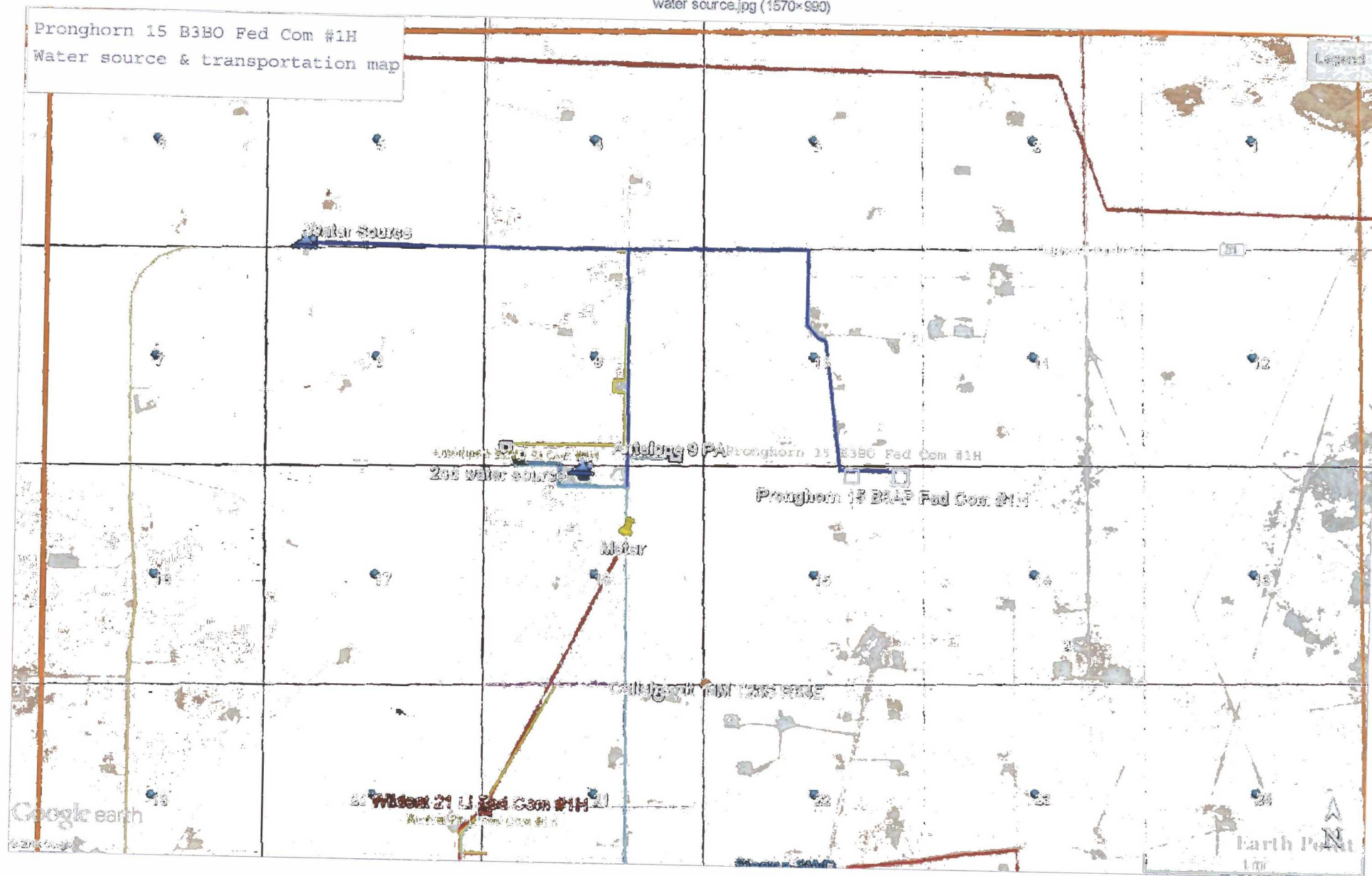
well site

70'

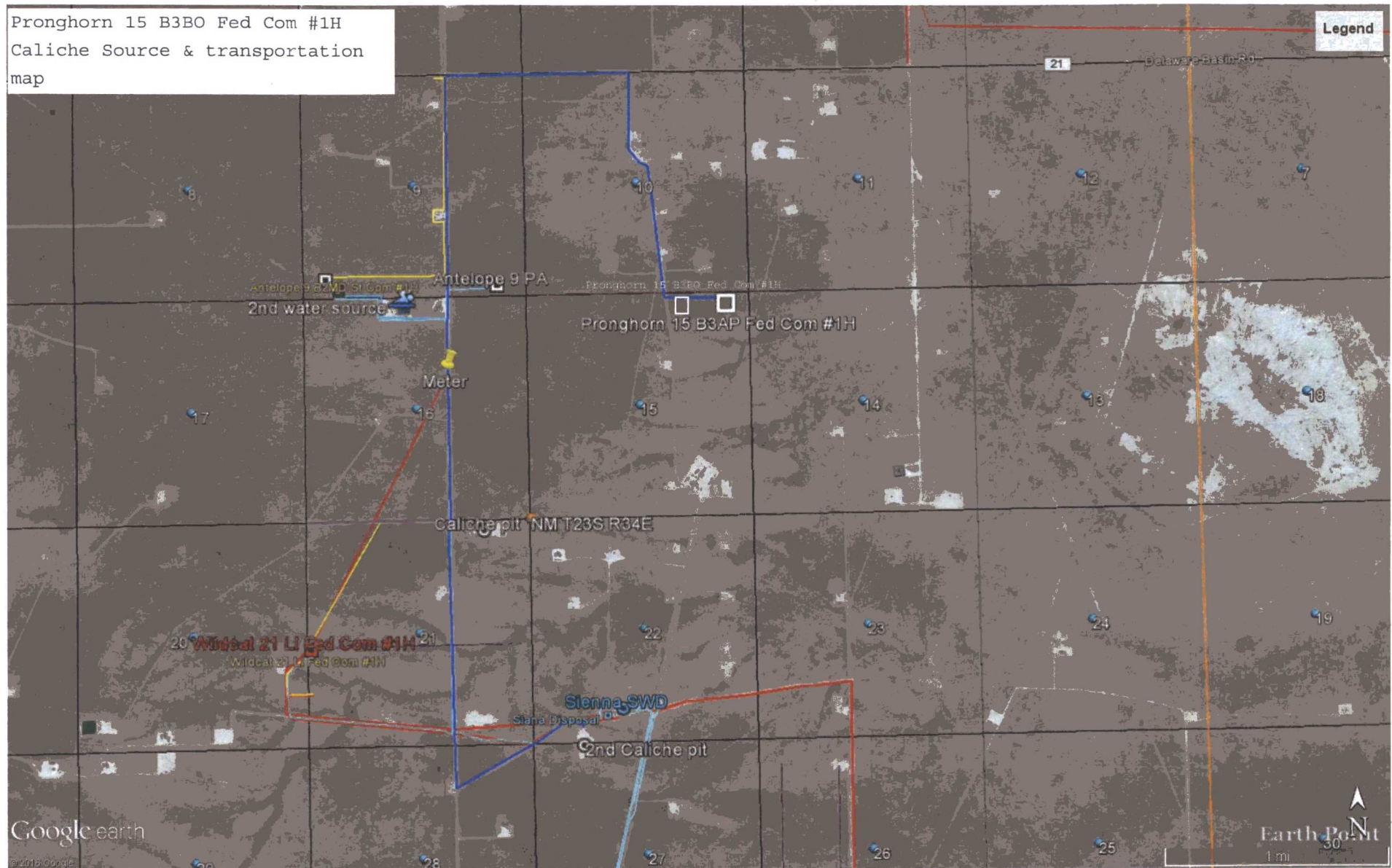
30'

Exhibit 6

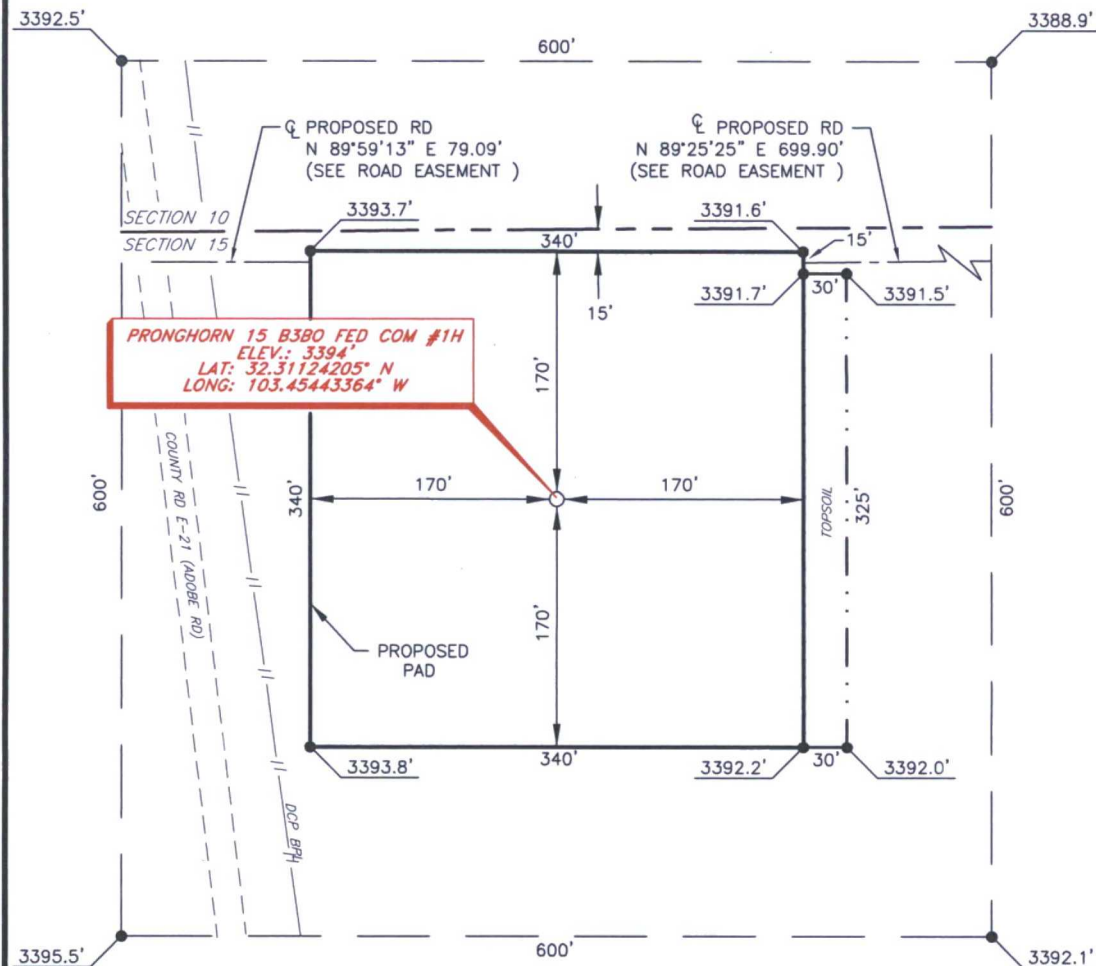
Mewbourne Oil Company
Pronghorn 15 B3BO Fed Com #1H
185' FNL & 1700' FEL
Sec 15 T23S R34E
Lea Co NM



Pronghorn 15 B3BO Fed Com #1H
Caliche Source & transportation
map



MEWBOURNE OIL COMPANY
 PRONGHORN 15 B3BO FED COM #1H
 (185' FNL & 1700' FEL)
 SECTION 15, T23S, R34E
 N. M. P. M., LEA CO., NEW MEXICO



DIRECTIONS TO LOCATION

From the intersection of CR-21 (Delaware Basin Road) and CR-E21 (Adobe Road);
 Go South on CR-E21 for approx. 1.1 miles to proposed road on left;
 Turn left and follow proposed road East approx. 250 feet;
 Location is on the right.

SCALE: 1" = 100'
 0 50 100

BEARINGS ARE
 NAD 27 GRID - NM EAST
 DISTANCES ARE
 GROUND.

Firm No.: TX 10193838 NM 4655451

Copyright 2015 - All Rights Reserved

NO.	REVISION	DATE
JOB NO.:	LS1504150	
DWG. NO.:	1504150PAD	

RRC

308 W. BROADWAY ST., HOBBS, NM 88240 (575) 964-8200

SCALE: 1" = 100'
DATE: 4-29-15
SURVEYED BY: ML/AA
DRAWN BY: JC
APPROVED BY: RMH
SHEET : 1 OF 3



Section 1 - General

Would you like to address long-term produced water disposal? NO

Section 2 - Lined Pits

Would you like to utilize Lined Pit PWD options? NO

Produced Water Disposal (PWD) Location:

PWD surface owner:

PWD disturbance (acres):

Lined pit PWD on or off channel:

Lined pit PWD discharge volume (bbl/day):

Lined pit specifications:

Pit liner description:

Pit liner manufacturers information:

Precipitated solids disposal:

Describe precipitated solids disposal:

Precipitated solids disposal permit:

Lined pit precipitated solids disposal schedule:

Lined pit precipitated solids disposal schedule attachment:

Lined pit reclamation description:

Lined pit reclamation attachment:

Leak detection system description:

Leak detection system attachment:

Lined pit Monitor description:

Lined pit Monitor attachment:

Lined pit: do you have a reclamation bond for the pit?

Is the reclamation bond a rider under the BLM bond?

Lined pit bond number:

Lined pit bond amount:

Additional bond information attachment:

Section 3 - Unlined Pits

Would you like to utilize Unlined Pit PWD options? NO

Produced Water Disposal (PWD) Location:

PWD surface owner:

PWD disturbance (acres):

Unlined pit PWD on or off channel:

Unlined pit PWD discharge volume (bbl/day):

Unlined pit specifications:

Precipitated solids disposal:

Describe precipitated solids disposal:

Precipitated solids disposal permit:

Unlined pit precipitated solids disposal schedule:

Unlined pit precipitated solids disposal schedule attachment:

Unlined pit reclamation description:

Unlined pit reclamation attachment:

Unlined pit Monitor description:

Unlined pit Monitor attachment:

Do you propose to put the produced water to beneficial use?

Beneficial use user confirmation:

Estimated depth of the shallowest aquifer (feet):

Does the produced water have an annual average Total Dissolved Solids (TDS) concentration equal to or less than that of the existing water to be protected?

TDS lab results:

Geologic and hydrologic evidence:

State authorization:

Unlined Produced Water Pit Estimated percolation:

Unlined pit: do you have a reclamation bond for the pit?

Is the reclamation bond a rider under the BLM bond?

Unlined pit bond number:

Unlined pit bond amount:

Additional bond information attachment:

Section 4 - Injection

Would you like to utilize Injection PWD options? NO

Produced Water Disposal (PWD) Location:

PWD surface owner:

PWD disturbance (acres):

Injection PWD discharge volume (bbl/day):

Injection well mineral owner:

Injection well type:

Injection well number:

Injection well name:

Assigned injection well API number?

Injection well API number:

Injection well new surface disturbance (acres):

Minerals protection information:

Mineral protection attachment:

Underground Injection Control (UIC) Permit?

UIC Permit attachment:

Section 5 - Surface Discharge

Would you like to utilize Surface Discharge PWD options? NO

Produced Water Disposal (PWD) Location:

PWD surface owner:

PWD disturbance (acres):

Surface discharge PWD discharge volume (bbl/day):

Surface Discharge NPDES Permit?

Surface Discharge NPDES Permit attachment:

Surface Discharge site facilities information:

Surface discharge site facilities map:

Section 6 - Other

Would you like to utilize Other PWD options? NO

Produced Water Disposal (PWD) Location:

PWD surface owner:

PWD disturbance (acres):

Other PWD discharge volume (bbl/day):

Other PWD type description:

Other PWD type attachment:

Have other regulatory requirements been met?

Other regulatory requirements attachment:



U.S. Department of the Interior
BUREAU OF LAND MANAGEMENT

Bond Info Data Report

07/17/2017

Bond Information

Federal/Indian APD: FED

BLM Bond number: NM1693

BIA Bond number:

Do you have a reclamation bond? NO

Is the reclamation bond a rider under the BLM bond?

Is the reclamation bond BLM or Forest Service?

BLM reclamation bond number:

Forest Service reclamation bond number:

Forest Service reclamation bond attachment:

Reclamation bond number:

Reclamation bond amount:

Reclamation bond rider amount:

Additional reclamation bond information attachment: