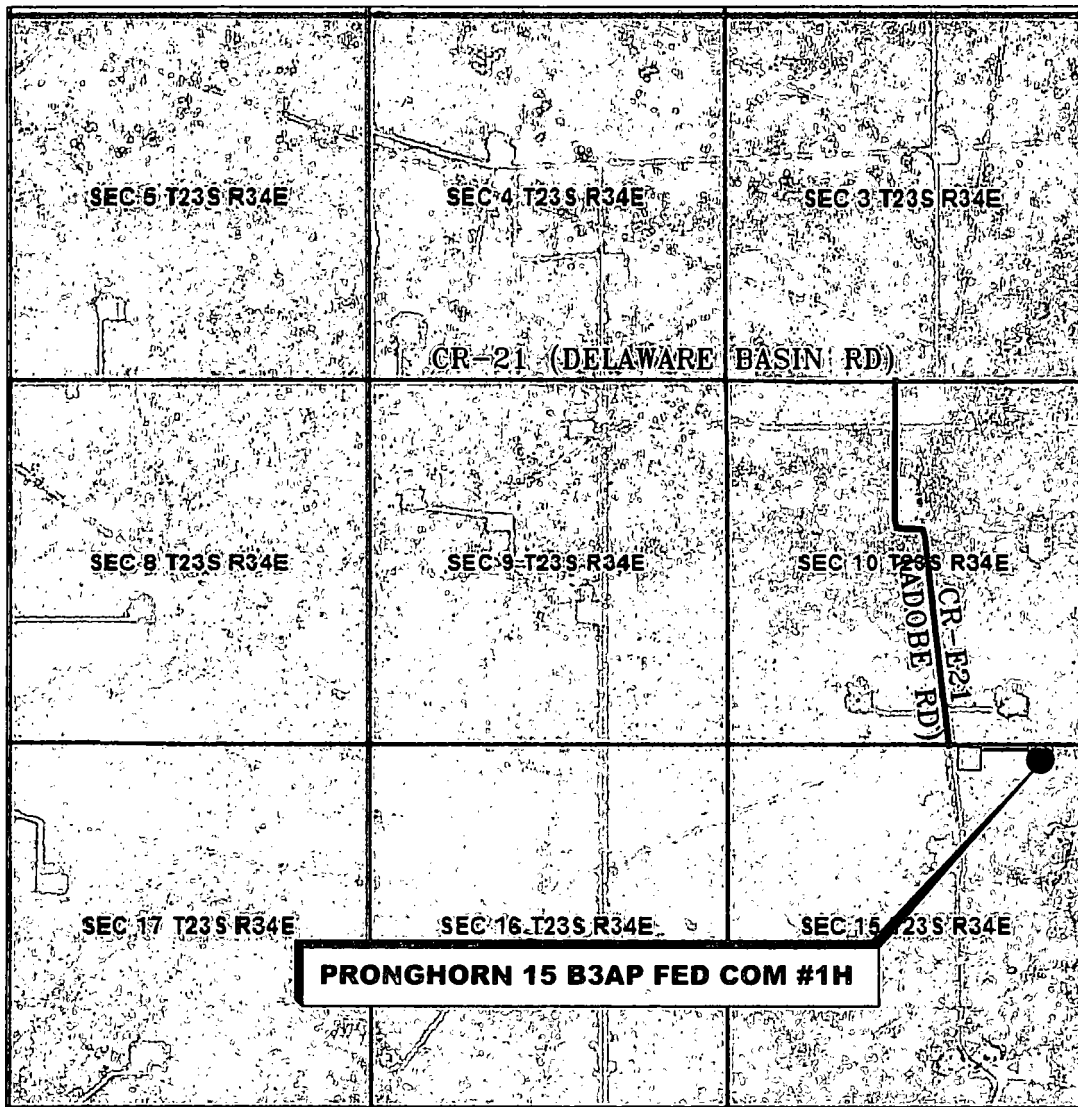


VICINITY MAP

NOT TO SCALE



SECTION 15, TWP. 23 SOUTH, RGE. 34 EAST,
N. M. P. M., LEA COUNTY, NEW MEXICO

OPERATOR: Mewbourne Oil Company
LEASE: Pronghorn 15 B3AP Fed Com
WELL NO.: 1H

LOCATION: 185' FNL & 660' FEL
ELEVATION: 3387'

Firm No.: TX 10193838 NM 4655451

Copyright 2015 - All Rights Reserved

NO.	REVISION	DATE
JOB NO.: LS1504149		
DWG. NO.: 1504149VM		

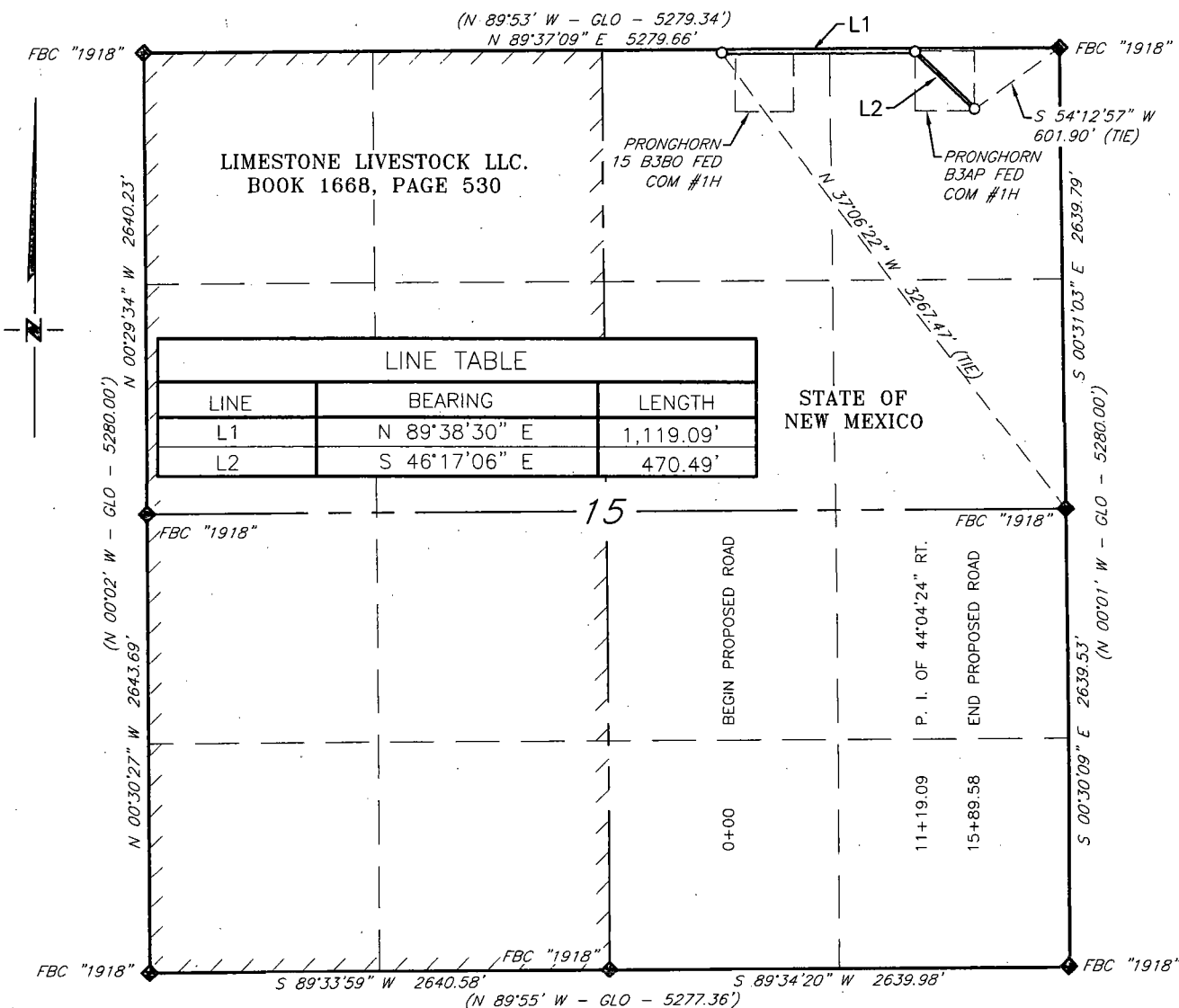
RRC

308 W. BROADWAY ST., HOBBS, NM 88240 (575) 964-8200

SCALE: 1" = 1000'
DATE: 4-29-15
SURVEYED BY: ML/AA
DRAWN BY: JC
APPROVED BY: RMH
SHEET : 1 OF 1

MEWBOURNE OIL COMPANY

PROPOSED ACCESS ROAD FROM EXISTING COUNTY RD E-21 (ADOBE RD)
TO THE PRONGHORN B3AP FED COM #1H WELL LOCATION
SECTION 15, T23S, R34E, N. M. P. M., LEA CO., NEW MEXICO



DESCRIPTION

A strip of land 20 feet wide, being 1,589.58 feet or 96.338 rods in length lying in Section 15, Township 23 South, Range 34 East, N. M. P. M., Lea County, New Mexico, being 10 feet left and 10 feet right of the following described survey of a centerline across State of New Mexico land:

BEGINNING at Engr. Sta. 0+00, a point in the Northeast quarter of Section 15, which bears N 37°06'22" W, 3,267.47 feet, from a brass cap, stamped "1918", found for the East quarter corner of Section 15;

Thence N 89°38'30" E, 1,119.90 feet, to Engr. Sta. 11+19.90, a P. I. of 44°04'24" right;

Thence S 46°17'06" E, 470.49 feet, to Engr. Sta. 15+89.58, the End of Survey, a point which bears, S 54°12'57" W, 601.90 feet, from a brass cap, stamped "1918", found for the Northeast corner of Section 15.

Said strip of land contains 0.730 acres, more or less, and is allocated by forties as follows::

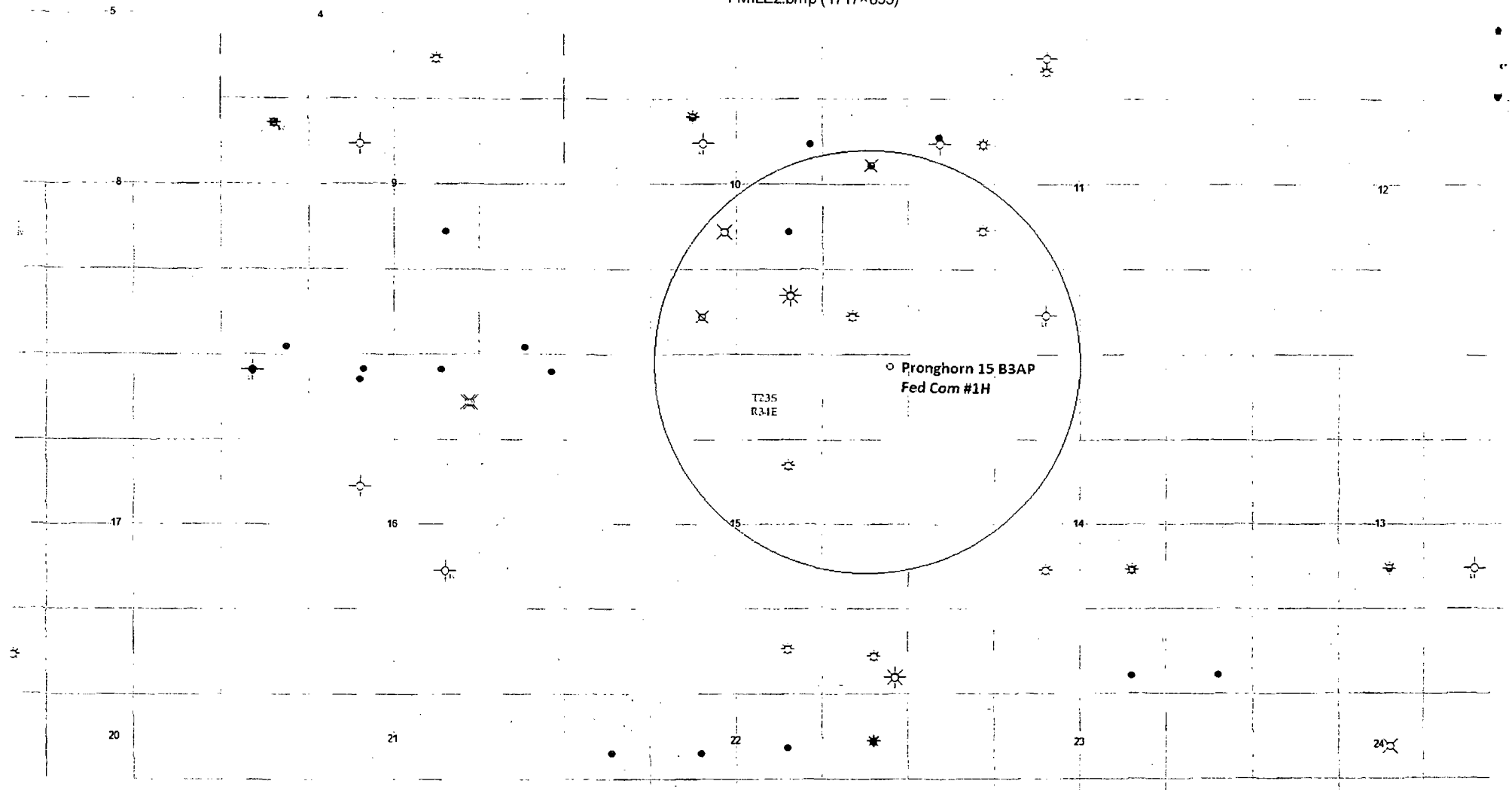
NW 1/4 NE 1/4	38.044 Rods	0.288 Acres
NE 1/4 NE 1/4	58.294 Rods	0.442 Acres

SCALE: 1" = 1000'

0 500 1000

REARINGS ARE GRID NAD 27

CRT M. HOL



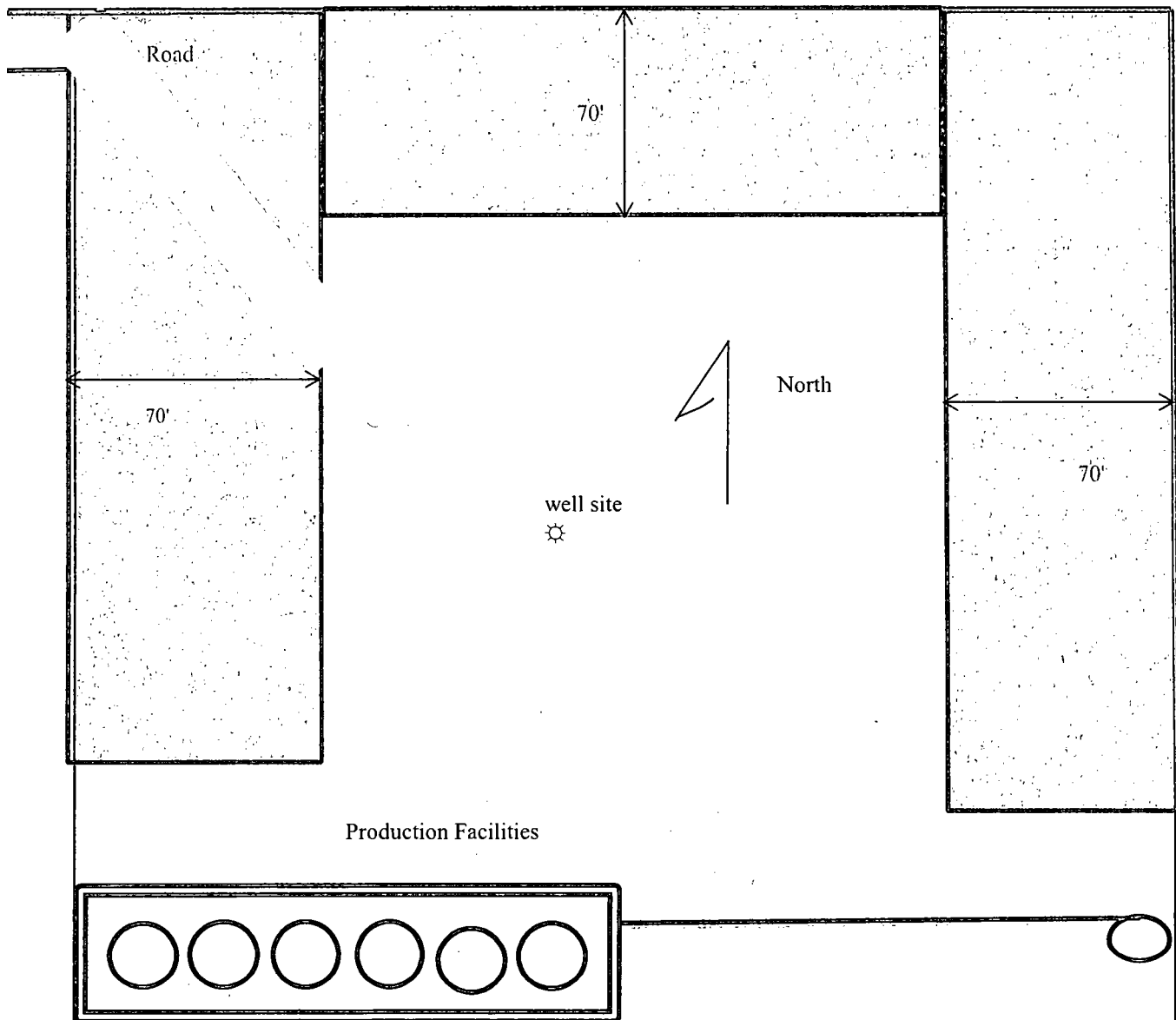
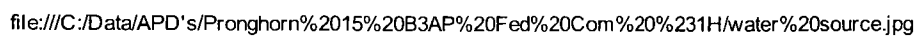
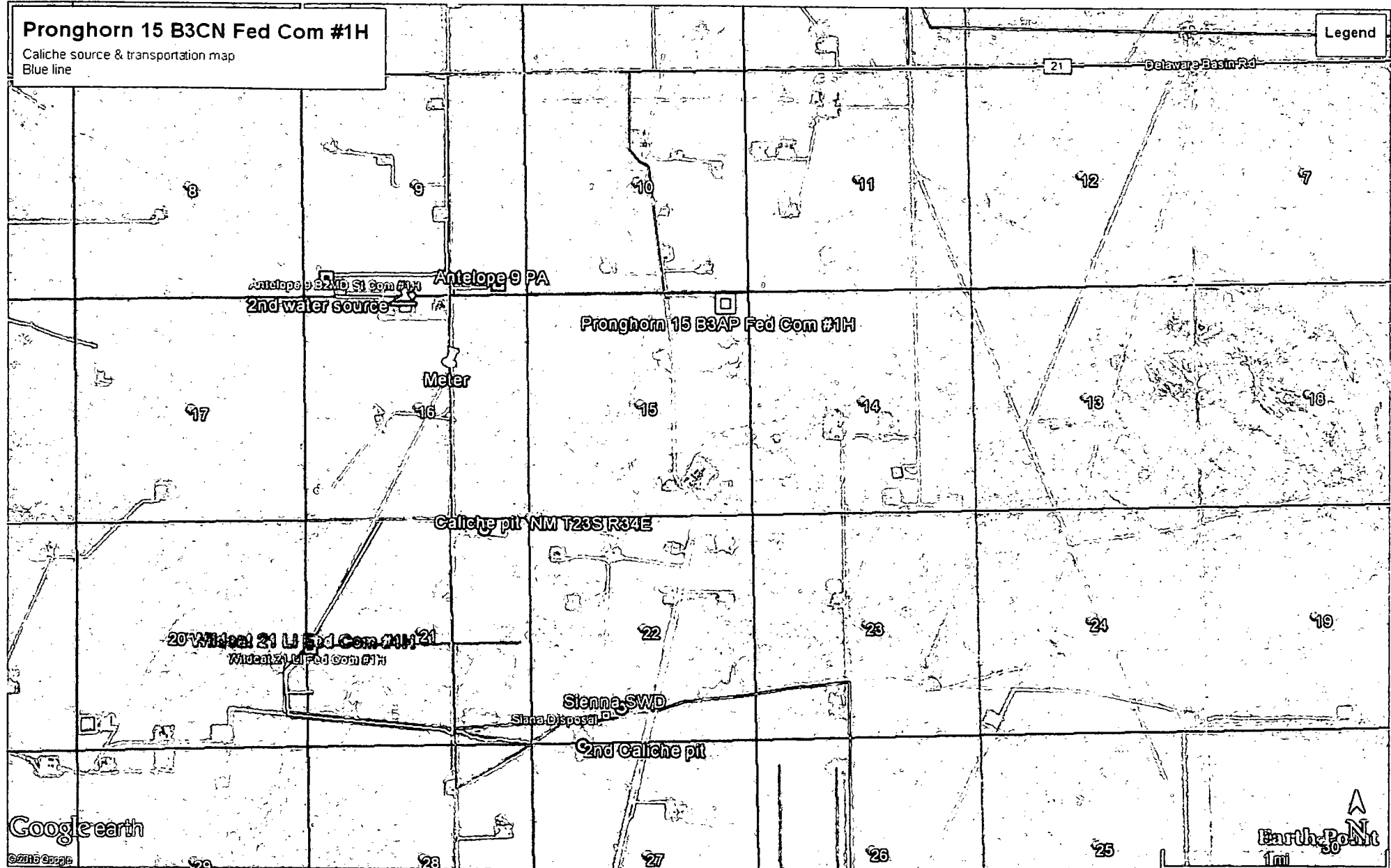


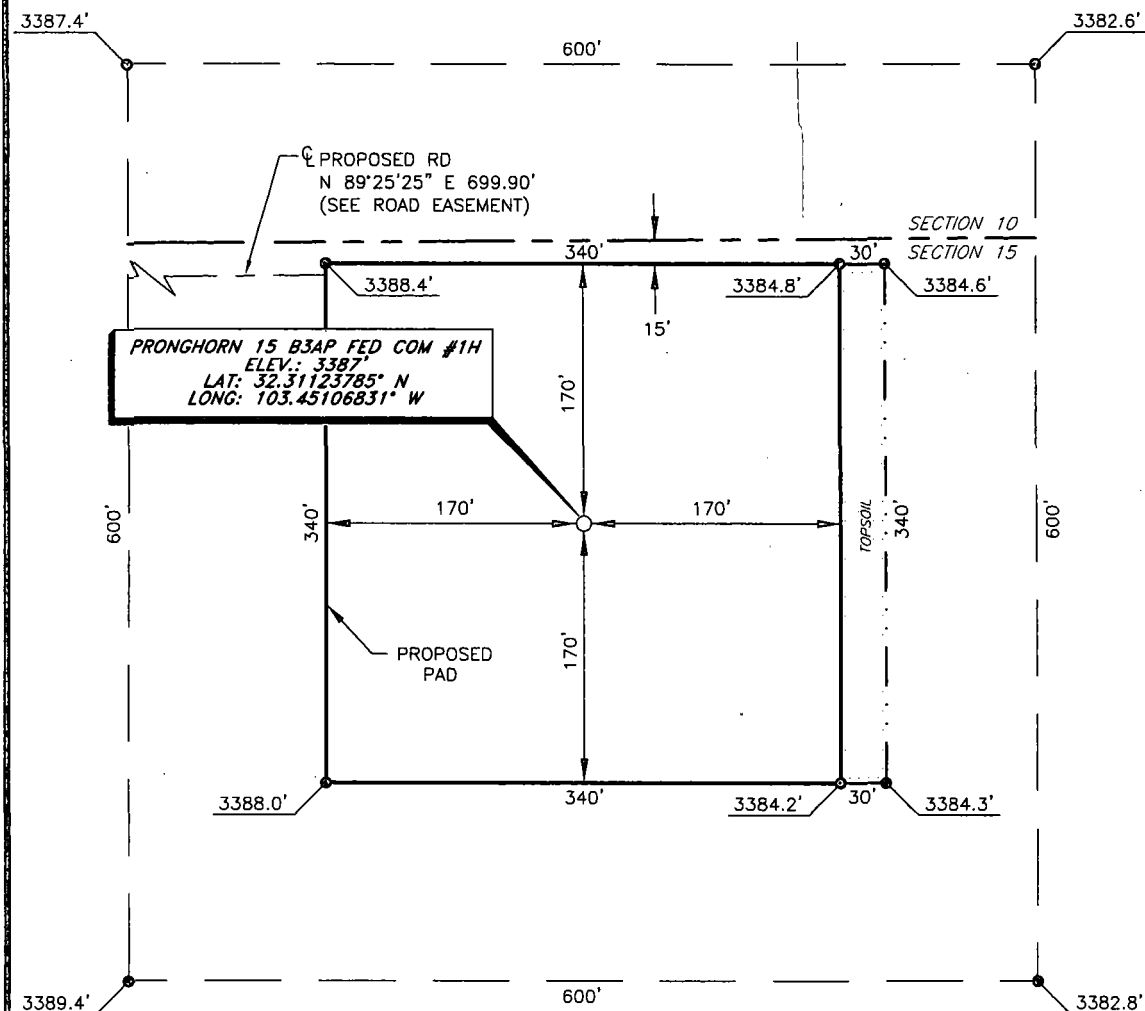
Exhibit 6

Mewbourne Oil Company
Pronghorn 15 B3AP Fed Com #1H
185' FNL & 660' FEL
Sec 15 T23S R34E
Lea Co NM





MEWBOURNE OIL COMPANY
PRONGHORN 15 B3AP FED COM #1H
 (185' FNL & 660' FEL)
 SECTION 15, T23S, R34E
 N. M. P. M., LEA CO., NEW MEXICO



DIRECTIONS TO LOCATION

From the intersection of CR-21 (Delaware Basin Road) and CR-E21 (Adobe Road);
 Go South on CR-E21 for approx. 1.1 miles to proposed road on left;
 Turn left and follow proposed road East approx. 0.2 miles;
 Location is on the right.

SCALE: 1" = 100'
 0 50 100

BEARINGS ARE
 NAD 27 GRID - NM EAST
 DISTANCES ARE
 GROUND.

Firm No.: TX 10193838 NM 4655451

Copyright 2015 - All Rights Reserved

NO.	REVISION	DATE
JOB NO.:	LS1504149	
DWG. NO.:	1504149PAD	

RRC

308 W. BROADWAY ST., HOBBS, NM 88240 (575) 964-8200

SCALE: 1" = 100'
DATE: 4-29-15
SURVEYED BY: ML/AA
DRAWN BY: JC
APPROVED BY: RMH
SHEET : 1 OF 2