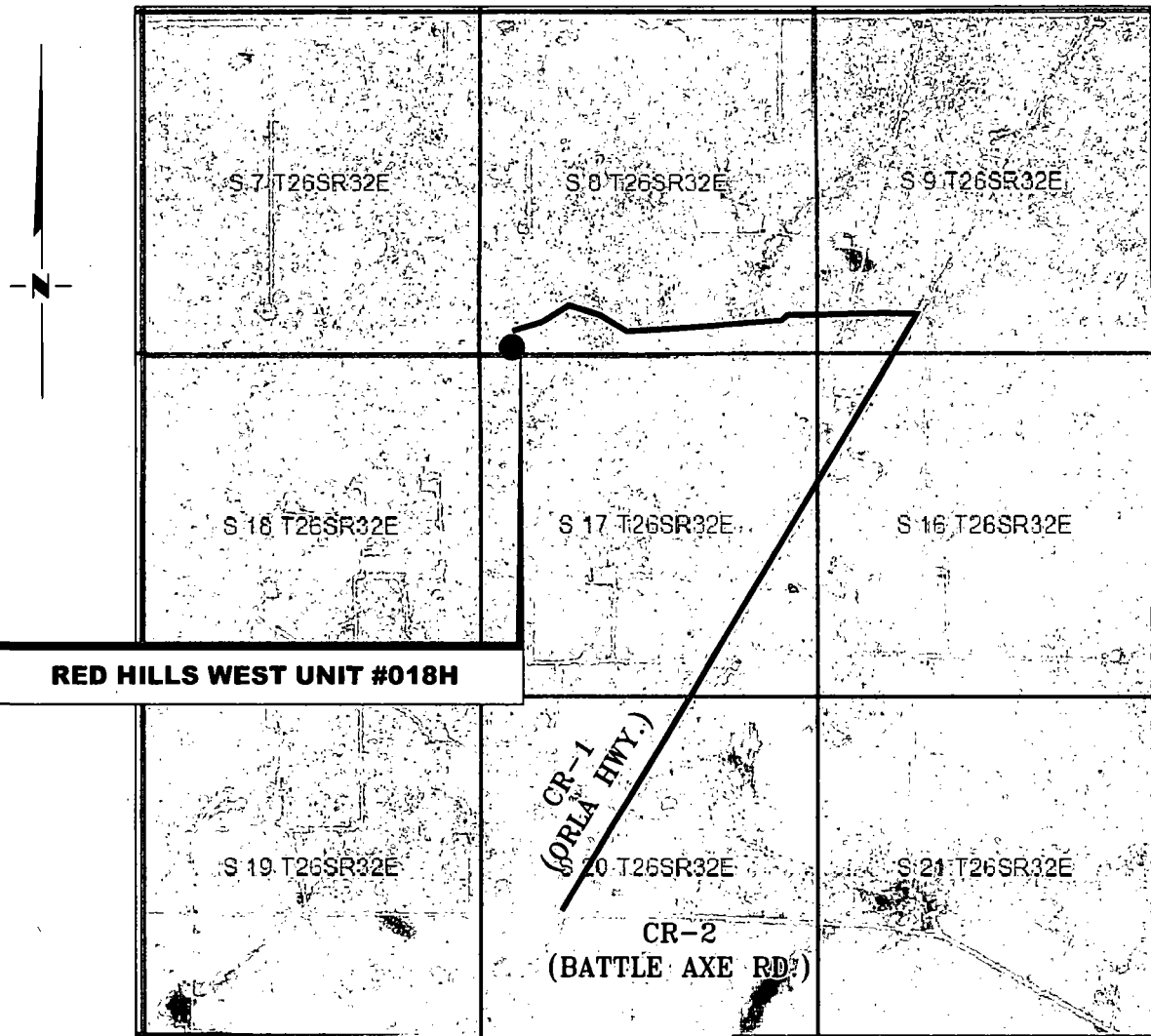


VICINITY MAP

NOT TO SCALE



SECTION 8, TWP. 26 SOUTH, RGE. 32 EAST,
N. M. P. M., LEA COUNTY, NEW MEXICO

OPERATOR: Mewbourne Oil Company
LEASE: Red Hills West Unit
WELL NO.: 018H

LOCATION: 100' FSL & 330' FWL
ELEVATION: 3195'

Firm No.: TX 10193838 NM 4655451

Copyright 2016 - All Rights Reserved

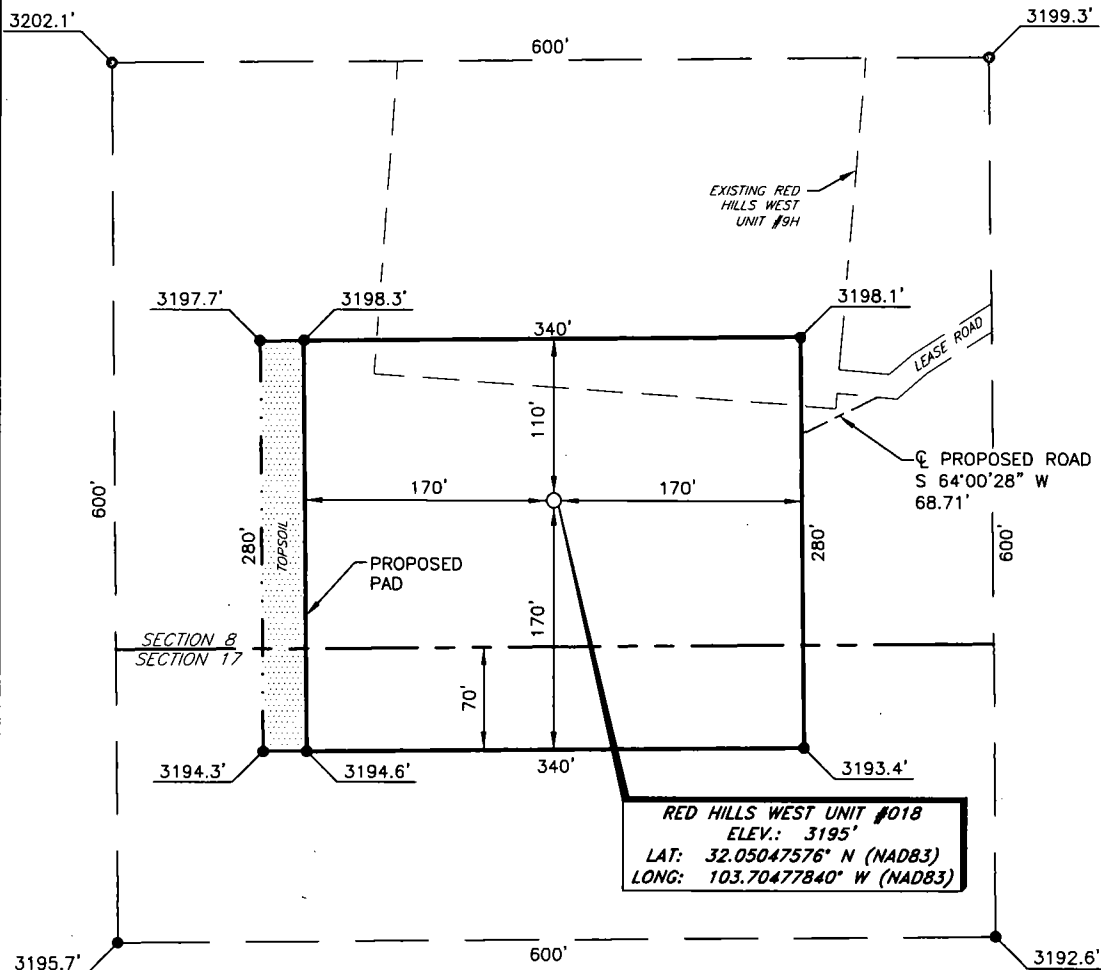
NO.	REVISION	DATE
JOB NO.:	LS1701045	
DWG. NO.:	1701045VM	

RRC

308 W. BROADWAY ST., HOBBS, NM 88240 (575) 964-8200

SCALE: N. T. S.
DATE: 2-14-2017
SURVEYED BY: ML/CG
DRAWN BY: CMJ
APPROVED BY: RMH
SHEET: 1 OF 1

MEWBOURNE OIL COMPANY
RED HILLS WEST UNIT #018H
(100' FSL & 330' FWL)
SECTION 8, T26S, R32E
N. M. P. M., LEA CO., NEW MEXICO



DIRECTIONS TO LOCATION

From the intersection of CR-2 (Battle Axe Rd.) and CR-1 (Orla Hwy.);

Go Northeast on CR-1 approx. 2.1 miles to a lease road on the left;

Turn left and go West approx. 1.3 miles to a propose road on the left;

Turn left and go Southwest approx. 240 feet, to location on the left.

THIS IS NOT A BOUNDARY SURVEY, APPARENT PROPERTY CORNERS AND PROPERTY LINES ARE SHOWN FOR INFORMATION ONLY. BOUNDARY DATA IS SHOWN FROM A PREVIOUS SURVEY REFERENCED HEREON.

I, R. M. Howett, a N. M. Professional Surveyor, hereby certify that prepared unclassified survey of a well location from an actual survey made on the 2/20/17 and under my direct supervision, said survey and plat meet the Min. Stats. for Land Surveying in the State of N. M. and are true and correct to the best of my knowledge and belief.

Robert M. Howett
Robert M. Howett NM PS 19680

SCALE: 1" = 100'
0 50 100
BEARINGS ARE
NAD 83 GRID - NM EAST
DISTANCES ARE
GROUND.

Firm No.: TX 10193838 NM 4655451

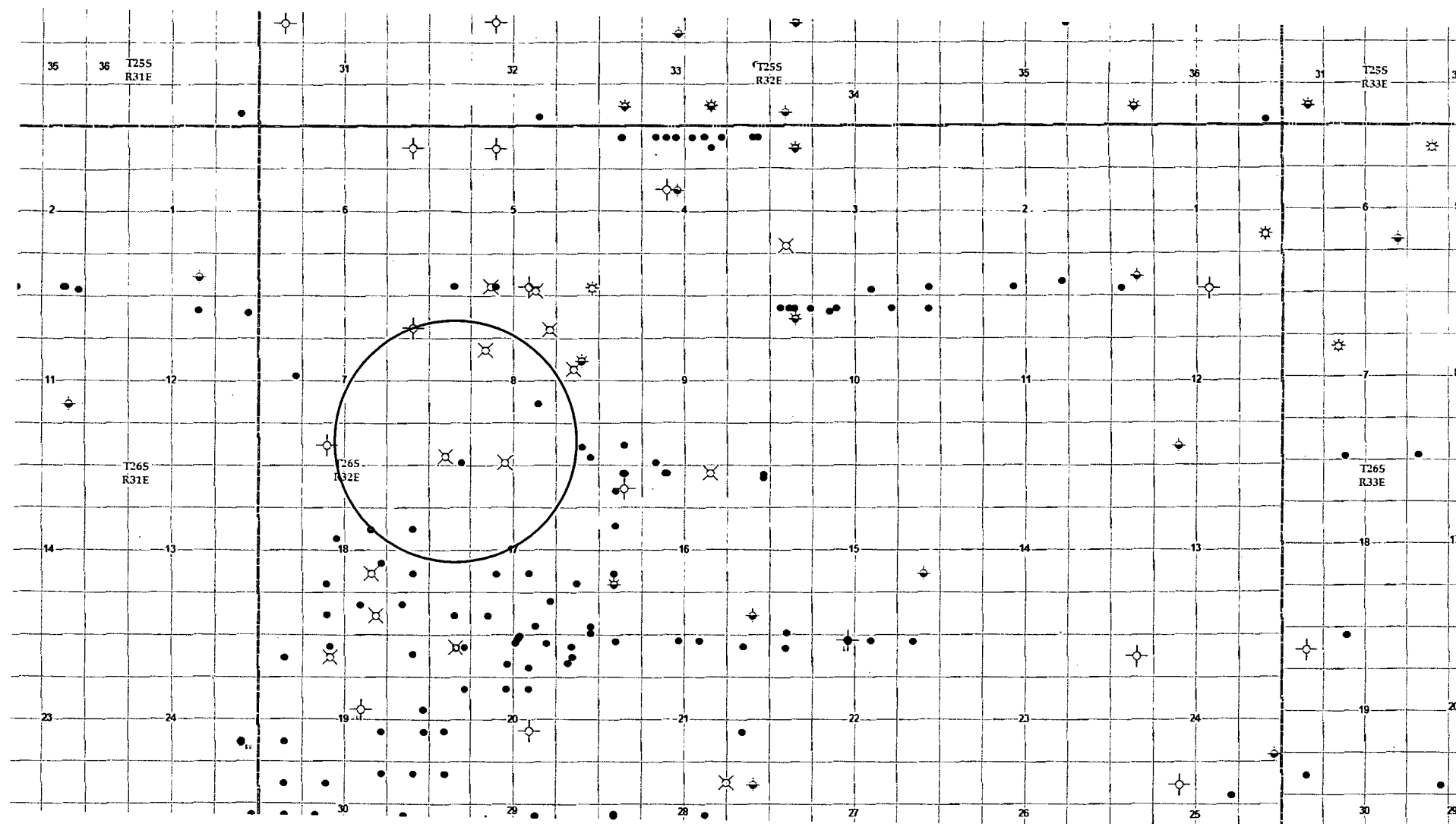
Copyright 2016 - All Rights Reserved

NO.	REVISION	DATE
JOB NO.:	LS1701045	
DWG. NO.:	1701045PAD	

RRC

308 W. BROADWAY ST., HOBBS, NM 88240 (575) 964-8200

SCALE: 1" = 100'
DATE: 2-14-2017
SURVEYED BY: ML/CG
DRAWN BY: CMJ
APPROVED BY: RMH
SHEET: 1 OF 1



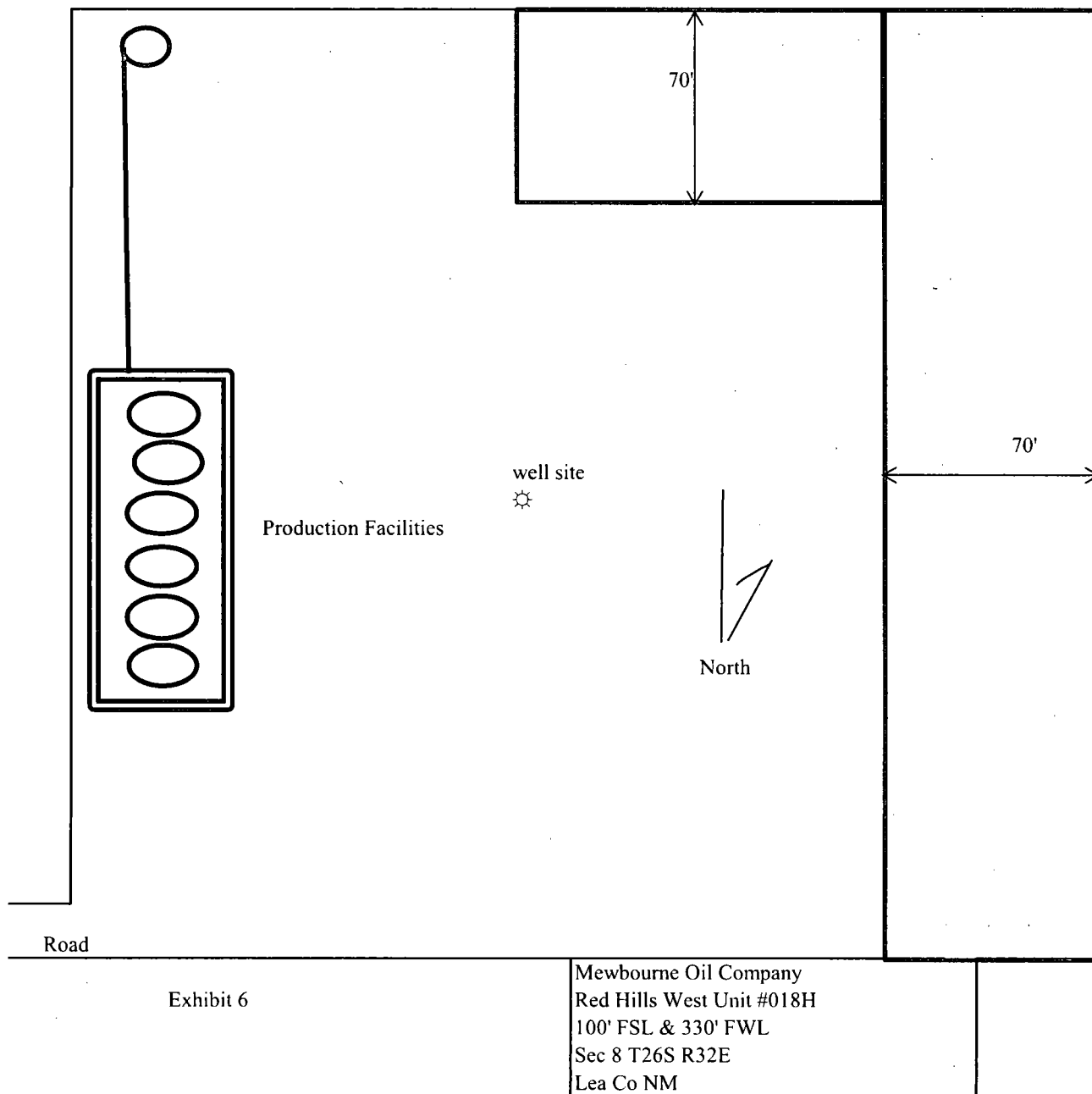
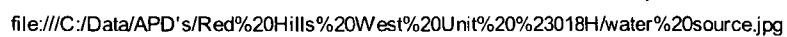
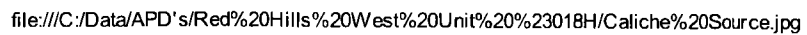
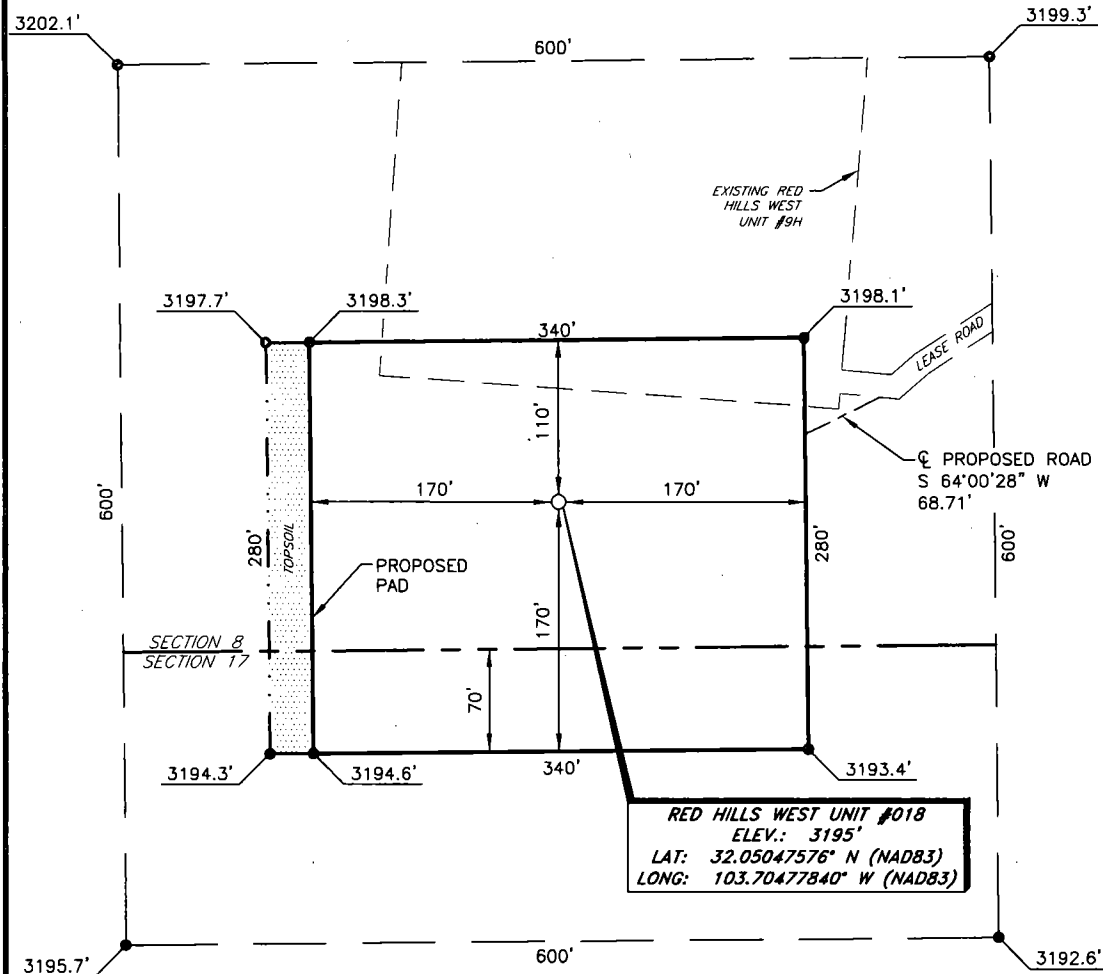


Exhibit 6





MEWBOURNE OIL COMPANY
RED HILLS WEST UNIT #018H
(100' FSL & 330' FWL)
SECTION 8, T26S, R32E
N. M. P. M., LEA CO., NEW MEXICO



DIRECTIONS TO LOCATION

From the intersection of CR-2 (Battle Axe Rd.) and CR-1 (Orla Hwy.);
Go Northeast on CR-1 approx. 2.1 miles to a lease road on the left;
Turn left and go West approx. 1.3 miles to a propose road on the left;
Turn left and go Southwest approx. 240 feet, to location on the left.

THIS IS NOT A BOUNDARY SURVEY, APPARENT PROPERTY CORNERS AND PROPERTY LINES ARE SHOWN FOR INFORMATION ONLY. BOUNDARY DATA IS SHOWN FROM A PREVIOUS SURVEY REFERENCED HEREON.

I, R. M. Howett, a N. M. Professional Surveyor, hereby certify that the proposed unclassified survey of a well location from an actual survey made on the 2/20/17 and under my direct supervision, said survey and plat meet the Min. Stats. for Land Surveying in the State of N. M. and are true and correct to the best of my knowledge and belief.

Robert M. Howett
Robert M. Howett NM PS 19680

SCALE: 1" = 100'
0 50 100
BEARINGS ARE
NAD 83 GRID - NM EAST
DISTANCES ARE
GROUND.

Firm No.: TX 10193838 NM 4655451

Copyright 2016 - All Rights Reserved

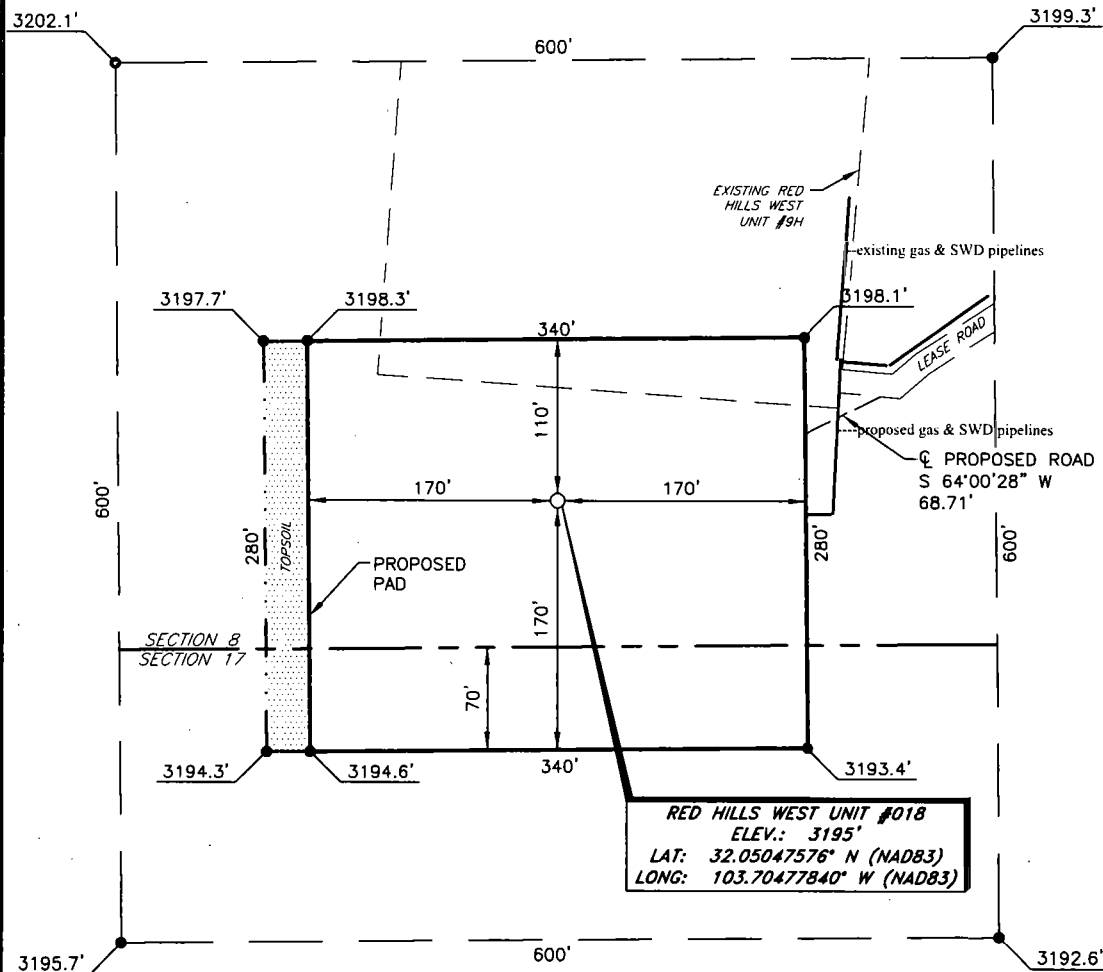
NO.	REVISION	DATE
JOB NO.:	LS1701045	
DWG. NO.:	1701045PAD	

RRC

308 W. BROADWAY ST., HOBBS, NM 88240 (575) 964-8200

SCALE: 1" = 100'
DATE: 2-14-2017
SURVEYED BY: ML/CG
DRAWN BY: CMJ
APPROVED BY: RMH
SHEET: 1 OF 1

MEWBOURNE OIL COMPANY
RED HILLS WEST UNIT #018H
(100' FSL & 330' FWL)
SECTION 8, T26S, R32E
N. M. P. M., LEA CO., NEW MEXICO



DIRECTIONS TO LOCATION

From the intersection of CR-2 (Battle Axe Rd.) and CR-1 (Orla Hwy.);
Go Northeast on CR-1 approx. 2.1 miles to a lease road on the left;
Turn left and go West approx. 1.3 miles to a propose road on the left;
Turn left and go Southwest approx. 240 feet, to location on the left.

THIS IS NOT A BOUNDARY SURVEY, APPARENT PROPERTY CORNERS AND PROPERTY LINES ARE SHOWN FOR INFORMATION ONLY. BOUNDARY DATA IS SHOWN FROM A PREVIOUS SURVEY REFERENCED HEREON.

I, R. M. Howett, a N. M. Professional Surveyor, hereby certify that the proposed unclassified survey of a well location from an actual survey made on the 2/20/17 and under my direct supervision, said survey and plat meet the Min. Sds. for Land Surveying in the State of N. M. and are true and correct to the best of my knowledge and belief.

Robert M. Howett

Robert M. Howett NM PS 19680

SCALE: 1" = 100'

BEARINGS ARE
NAD 83 GRID - NM EAST
DISTANCES ARE
GROUND.

Firm No.: TX 10193838 NM 4655451

Copyright 2016 - All Rights Reserved

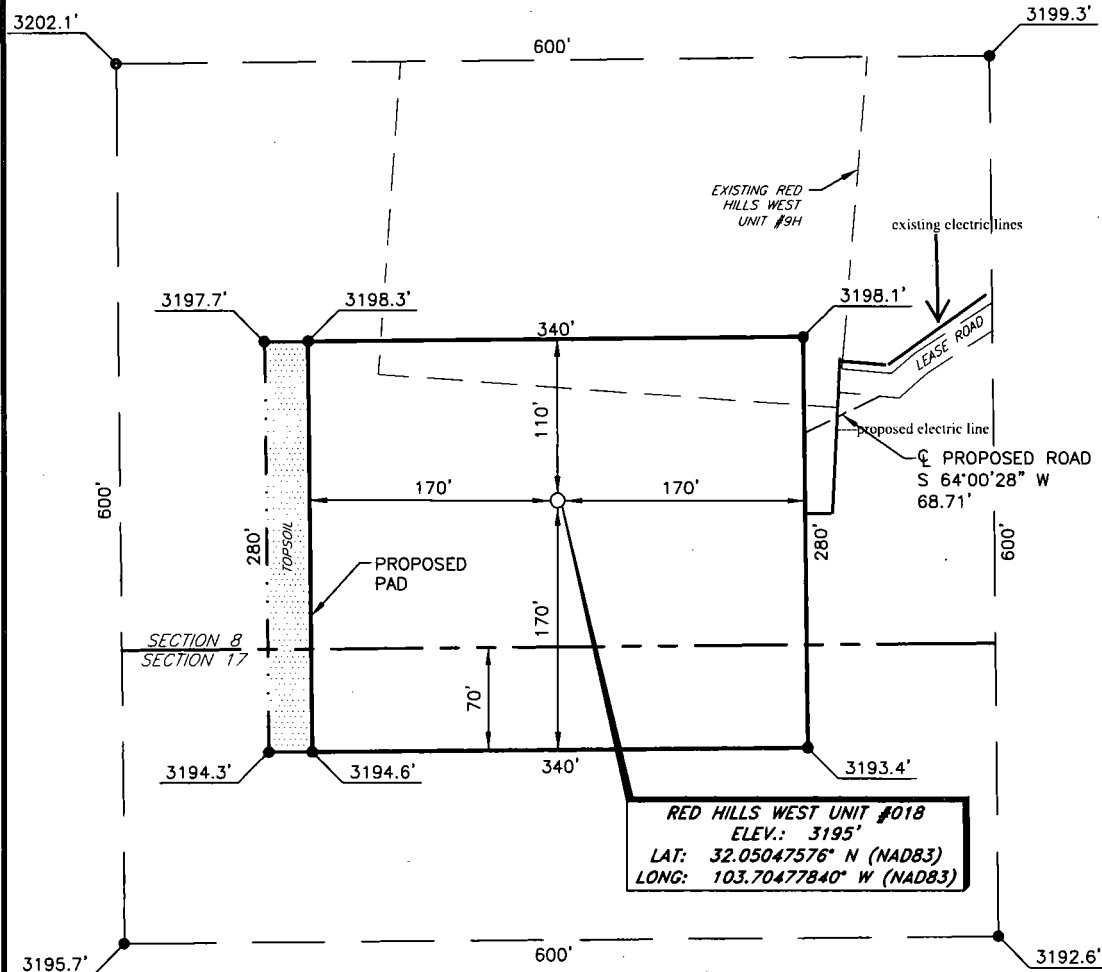
NO.	REVISION	DATE
JOB NO.:	LS1701045	
DWG. NO.:	1701045PAD	

RRC

308 W. BROADWAY ST., HOBBS, NM 88240 (575) 964-8200

SCALE: 1" = 100'
DATE: 2-14-2017
SURVEYED BY: ML/CG
DRAWN BY: CMJ
APPROVED BY: RMH
SHEET: 1 OF 1

MEWBOURNE OIL COMPANY
RED HILLS WEST UNIT #018H
(100' FSL & 330' FWL)
SECTION 8, T26S, R32E
N. M. P. M., LEA CO., NEW MEXICO



RED HILLS WEST UNIT #018
ELEV.: 3195'
LAT: 32.05047576° N (NAD83)
LONG: 103.70477840° W (NAD83)

DIRECTIONS TO LOCATION

From the intersection of CR-2 (Battle Axe Rd.) and CR-1 (Orla Hwy.);
Go Northeast on CR-1 approx. 2.1 miles to a lease road on the left;
Turn left and go West approx. 1.3 miles to a propose road on the left;
Turn left and go Southwest approx. 240 feet, to location on the left.

THIS IS NOT A BOUNDARY SURVEY, APPARENT PROPERTY CORNERS AND PROPERTY LINES ARE SHOWN FOR INFORMATION ONLY. BOUNDARY DATA IS SHOWN FROM A PREVIOUS SURVEY REFERENCED HEREON.

I, R. M. Howett, a N. M. Professional Surveyor, hereby certify that the proposed unclassified survey of a well location from an actual survey made on the 2/20/17 and under my direct supervision, said survey and plat meet the Min. Stats. for Land Surveying in the State of N. M. and are true and correct to the best of my knowledge and belief.

Robert M. Howett
Robert M. Howett NM PS 19680

SCALE: 1" = 100'
0 50 100
BEARINGS ARE
NAD 83 GRID - NM EAST
DISTANCES ARE
GROUND.

Firm No.: TX 10193838 NM 4655451

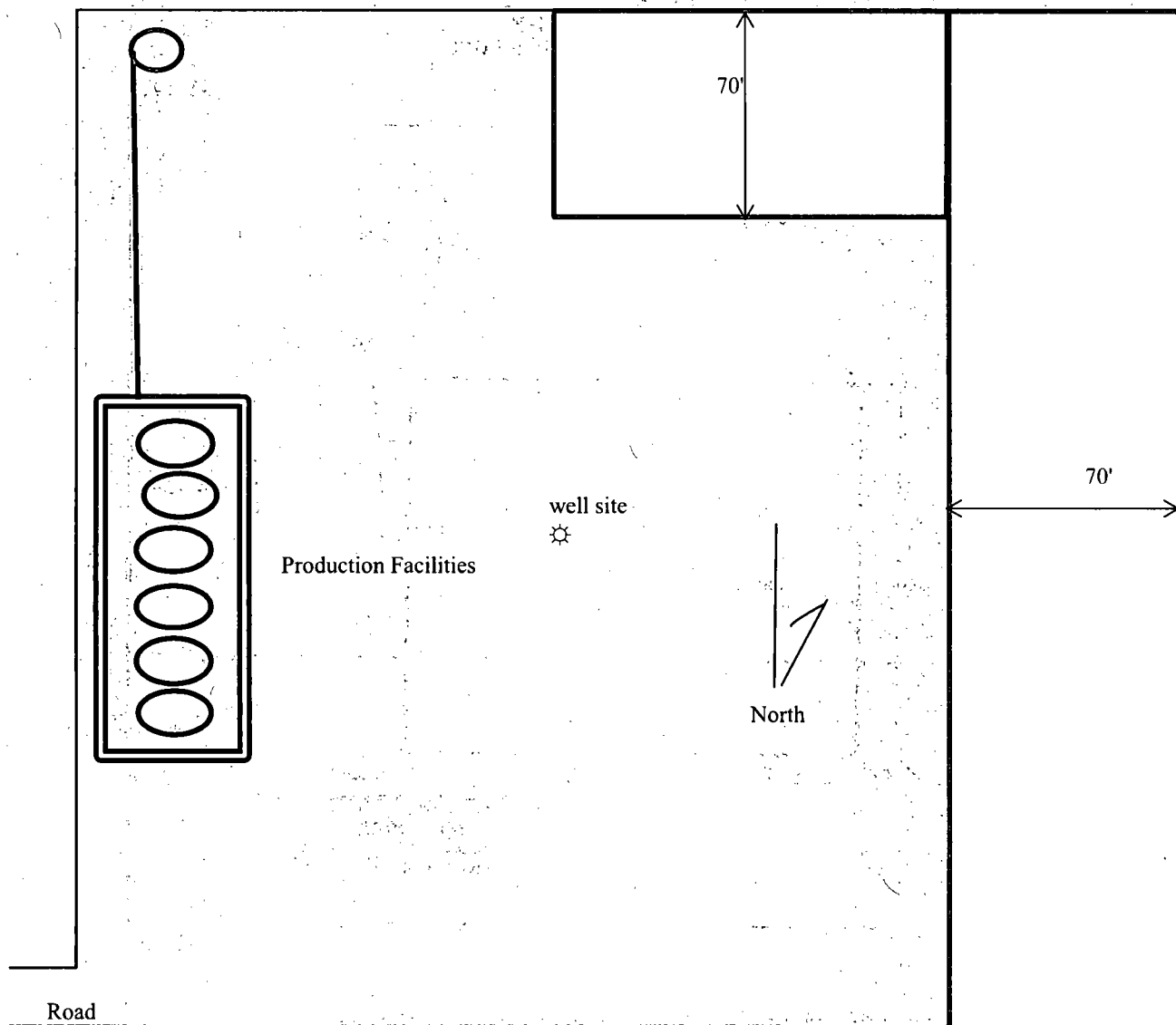
Copyright 2016 - All Rights Reserved

NO.	REVISION	DATE
JOB NO.:	LS1701045	
DWG. NO.:	1701045PAD	

RRC

308 W. BROADWAY ST., HOBBS, NM 88240 (575) 964-8200

SCALE: 1" = 100'
DATE: 2-14-2017
SURVEYED BY: ML/CG
DRAWN BY: CMJ
APPROVED BY: RMH
SHEET: 1 OF 1



Road

Exhibit 6

Mewbourne Oil Company
Red Hills West Unit #018H
100' FSL & 330' FWL
Sec 8 T26S R32E
Lea Co NM