



**EOG Resources, Inc.**  
**Thor 21 Fed Com CTB**  
**O-21-26S-33E**

7/31/2017

**LEGEND**

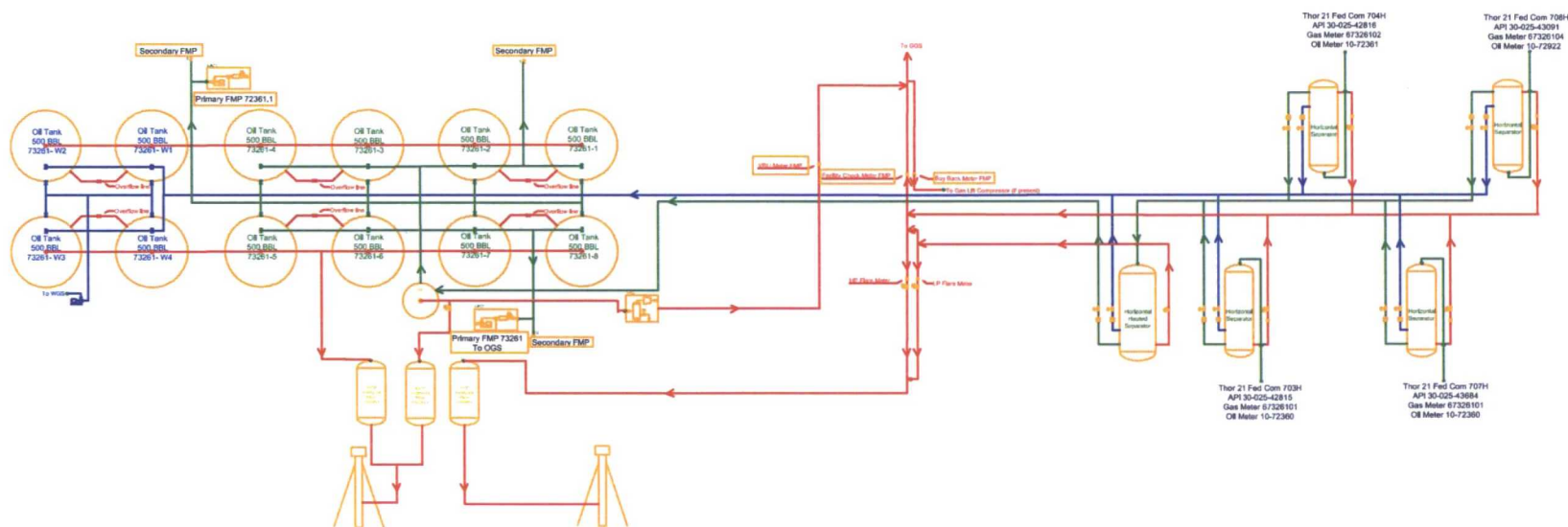
 Valve Open	 Turbine/ Coriolis Meter
 Valve Closed	 Oil
 Valve Sealed	 Gas
 Orifice Meter	 Water

**FACILITY DIAGRAM**  
Shown: Major equipment, vessels, process piping, and valves  
Not shown: Auxiliary process systems such as fuel/ pilot gas system, gas lift system, roll lines, recirculating lines, vent lines, and small drain lines

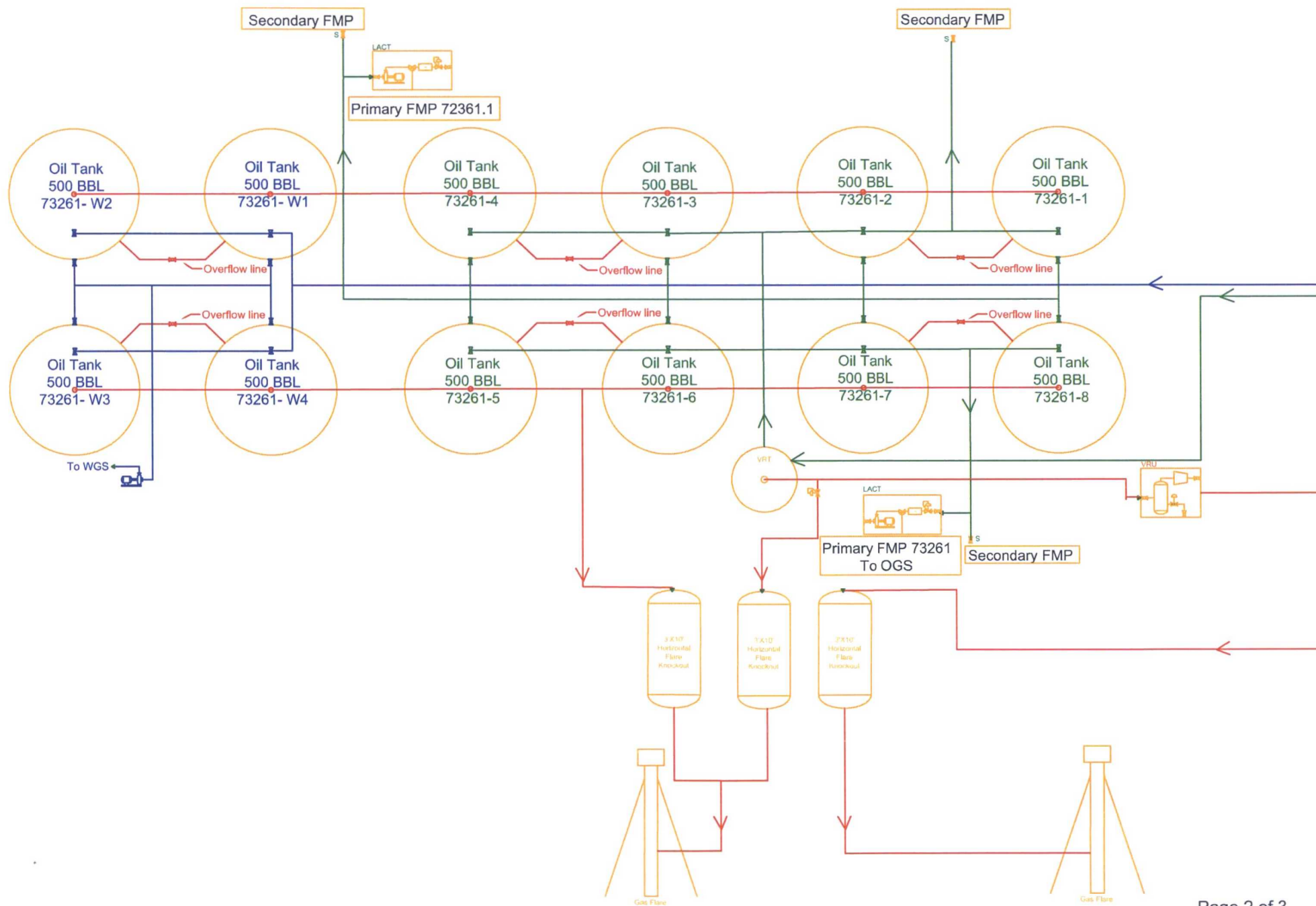
**PRODUCTION PHASE:** All valves that provide access to production are effectively sealed in the closed position.

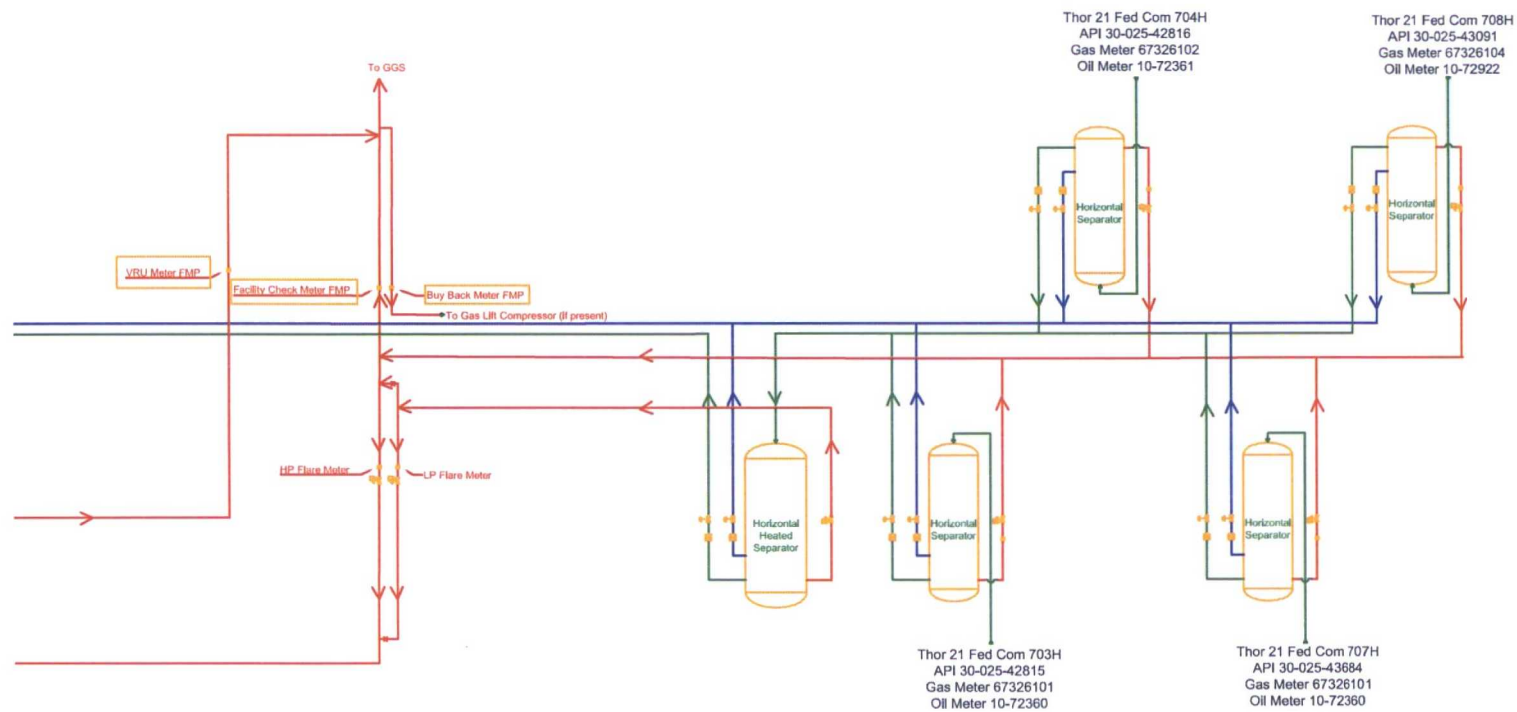
**SALES THROUGH LACT UNITS:** Sale is measured through LACT units. All other valves that provide access to production (load-out valves) are effectively sealed in the closed position.

**WATER TANKS:** If the possibility for oil to enter water tanks exists through common recirculating or equalizing lines, oil tanks are isolated from water tanks by valves effectively sealed in the closed position.



**Facility Overview:** Please see pages 2 and 3 for details.





Bureau of Land Management

Hobbs Field Office

414 W. Taylor

Hobbs, New Mexico

505.393.3612

**WATER PRODUCTION & DISPOSAL INFORMATION**

Well: THOR 21 FED COM # 707H

SWSE Sec 21 T26S, R33E

30-025-43684

1. Name of formations producing water on lease: WOLFCAMP
2. Amount of water produced from all formations in barrels per day 2000-4000 BWPD
3. How water is stored on lease Tanks 4-400 bbl tanks
4. How water is moved to disposal facility Pipeline/Trucked
5. Disposal Facility:
  - a. Facility Operators name EOG RESOURCES, INC
  - b. Name of facility or well name & number  
**Black Bear 36 State #5**  
30-025-40585  
H-36-25S-33E
  - c. Type of facility or wells WDW
  - d. Permit No SWD -1359