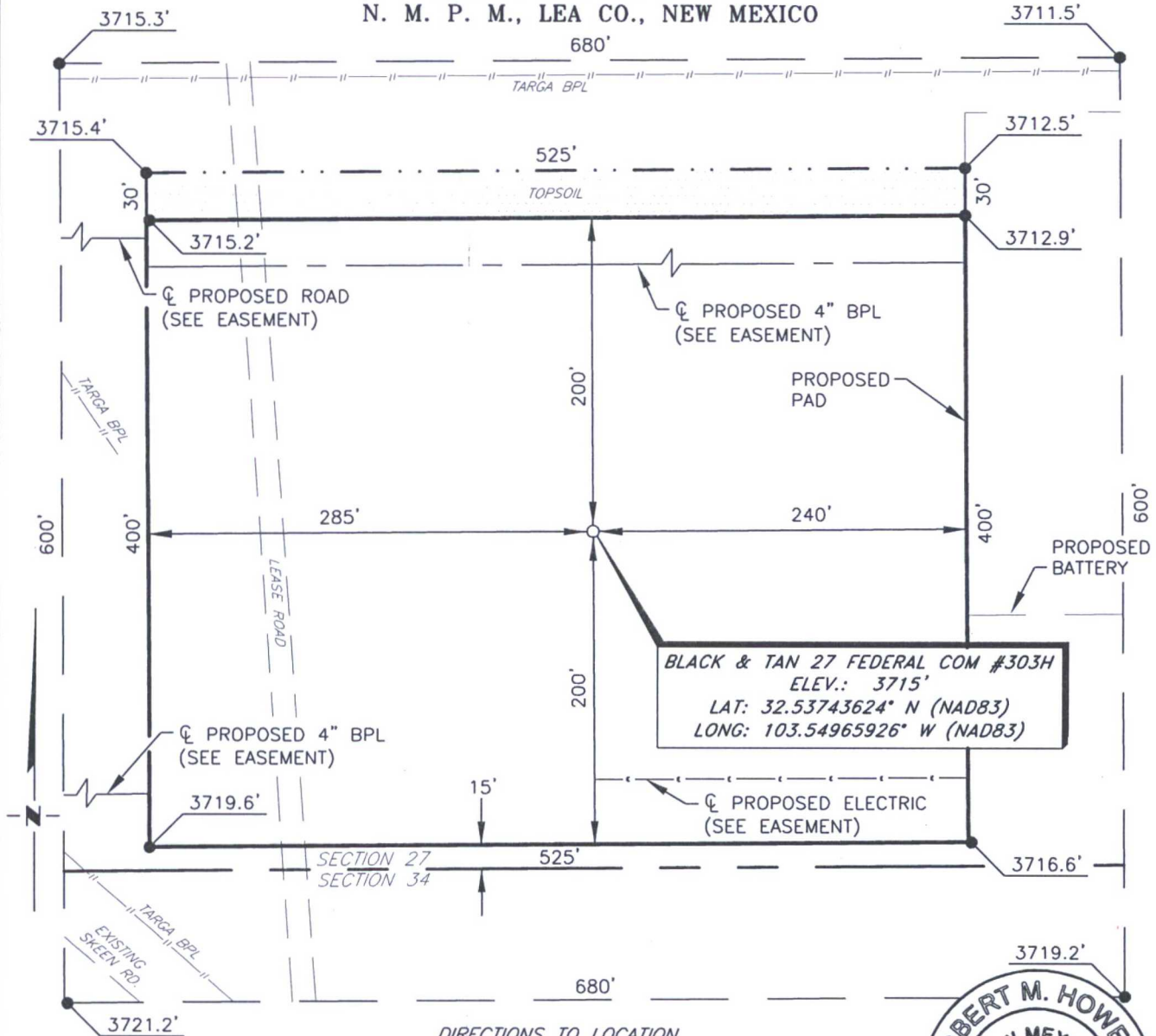


APACHE CORPORATION
BLACK & TAN 27 FEDERAL COM #303H
(215' FSL & 2110' FWL)
SECTION 27, T20S, R34E
N. M. P. M., LEA CO., NEW MEXICO



BLACK & TAN 27 FEDERAL COM #303H
ELEV.: 3715'
LAT: 32.53743624° N (NAD83)
LONG: 103.54965926° W (NAD83)

DIRECTIONS TO LOCATION

From the intersection of N.M. Hwy. 176 and CR-27 (Skeen Rd.)
 Go Northwest on CR-27 approx. 1.2 miles to a lease road on
 the right;
 Turn right and go North approx. 363 feet to location on the right;

SCALE: 1" = 100'
 0 50 100
 BEARINGS ARE
 NAD 83 GRID - NM EAST
 DISTANCES ARE
 GROUND.

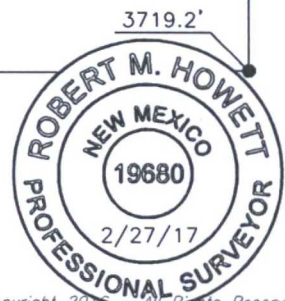
Firm No.: TX 10193838 NM 4655451

Copyright 2016 - All Rights Reserved

NO.	REVISION	DATE
JOB NO.: LS1702123		
DWG. NO.: 1702123PAD		

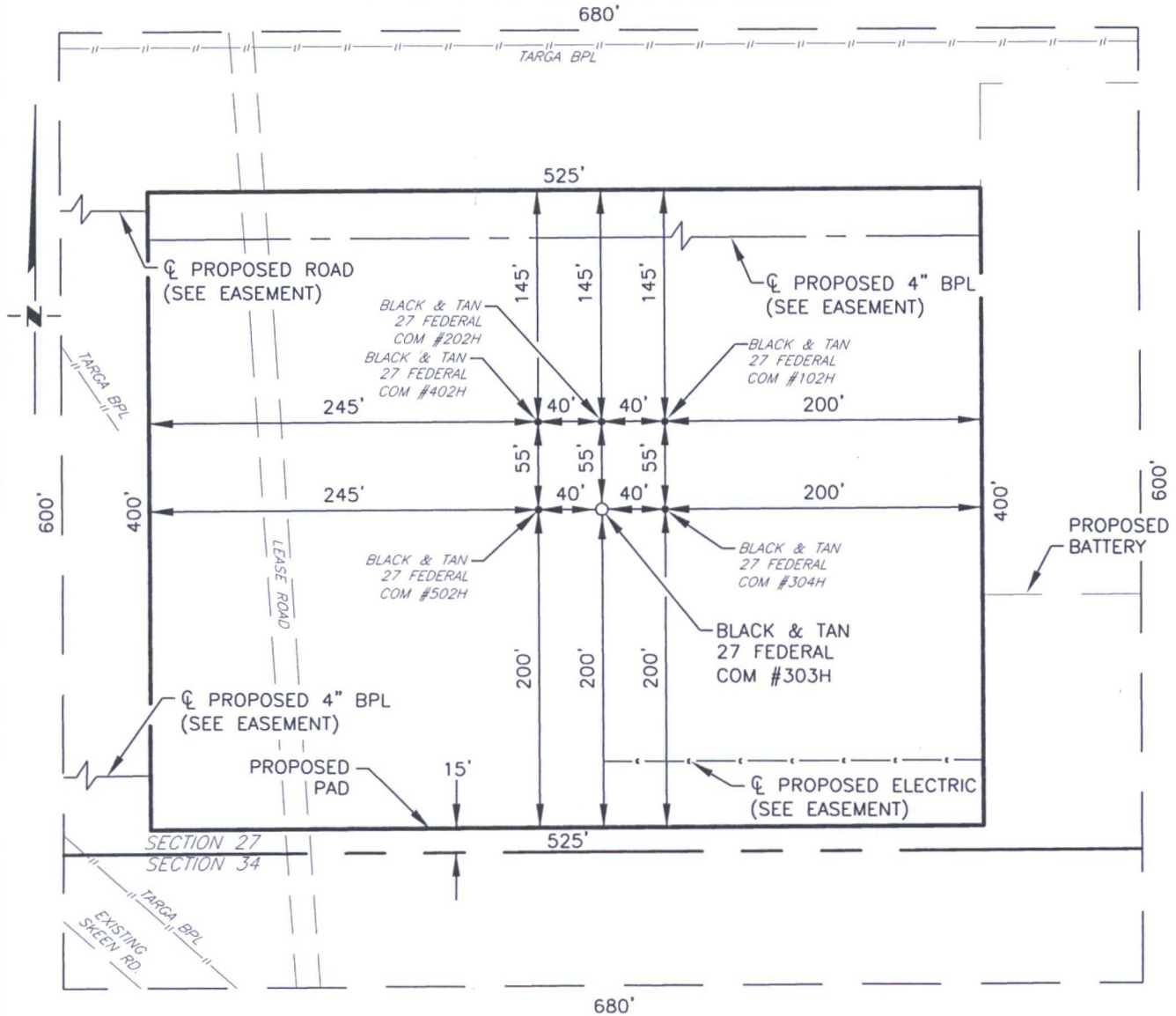
RRC

308 W. BROADWAY ST., HOBBS, NM 88240 (575) 964-8200



SCALE: 1" = 100'
DATE: 2-21-2017
SURVEYED BY: JM/HD
DRAWN BY: LPS
APPROVED BY: RMH
SHEET: 1 OF 1

APACHE CORPORATION
BLACK & TAN 27 FEDERAL COM
FUTURE PAD DEVELOPMENT
 SECTION 27, T20S, R34E
 N. M. P. M., LEA CO., NEW MEXICO



SCALE: 1" = 100'
 0 50 100
 BEARINGS ARE
 NAD 83 GRID - NM EAST
 DISTANCES ARE
 GROUND.

Firm No.: TX 10193838 NM 4655451

Copyright 2016 - All Rights Reserved

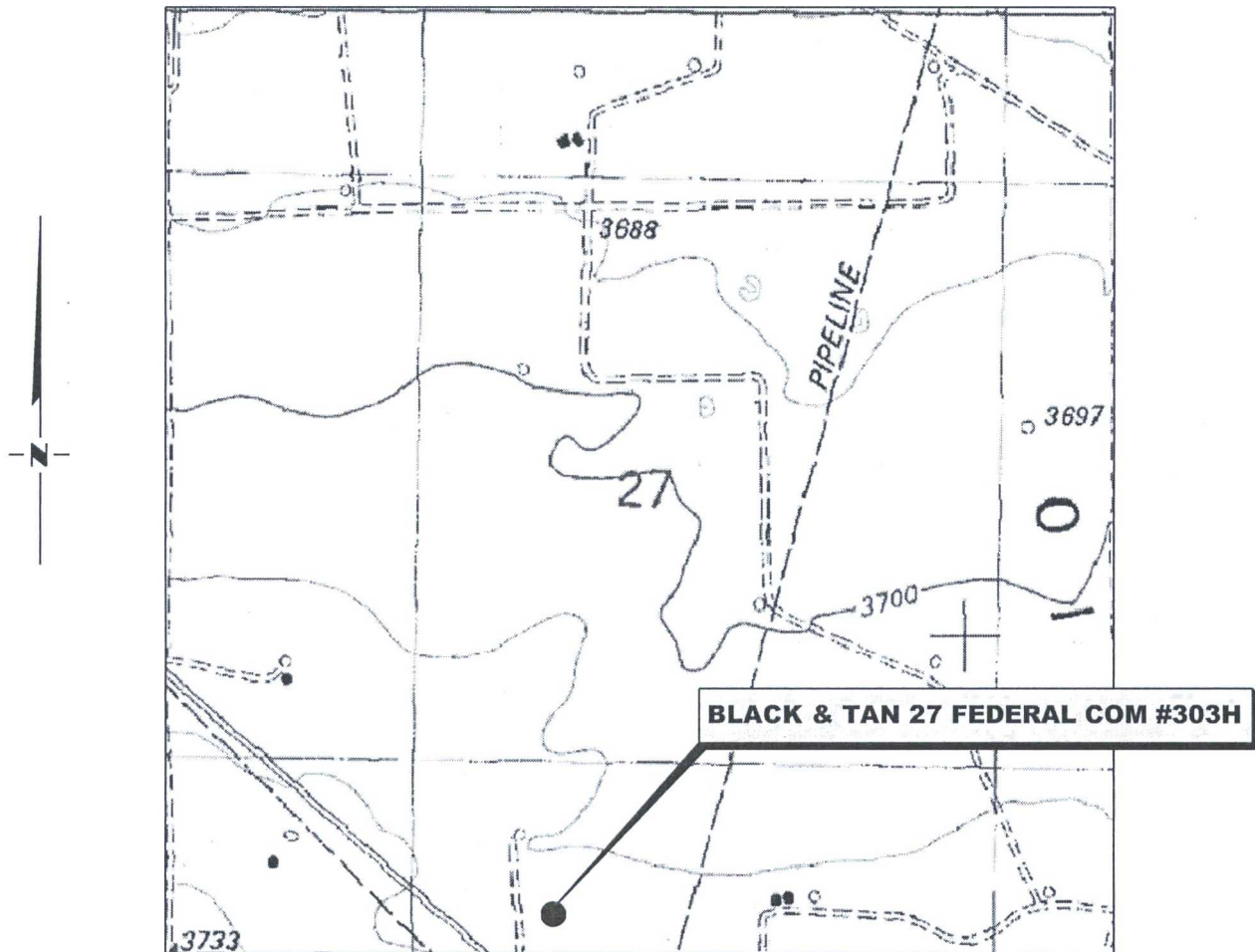
NO.	REVISION	DATE
JOB NO.:	LS1702123	
DWG. NO.:	1702123FUT	



308 W. BROADWAY ST., HOBBS, NM 88240 (575) 964-8200

SCALE: 1" = 100'
DATE: 2-21-2017
SURVEYED BY: JM/HD
DRAWN BY: LPS
APPROVED BY: RMH
SHEET: 1 OF 1

LOCATION VERIFICATION MAP



SECTION 27, TWP. 20 SOUTH, RGE. 34 EAST,
N. M. P. M., LEA CO., NEW MEXICO

OPERATOR: Apache Corporation
LEASE: Black & Tan 27 Federal Com
WELL NO.: 303H
ELEVATION: 3715'

LOCATION: 215' FSL & 2110' FWL
CONTOUR INTERVAL: 10'
USGS TOPO. SOURCE MAP:
Lea, NM (1984)

Firm No.: TX 10193838 NM 4655451

Copyright 2016 - All Rights Reserved

NO.	REVISION	DATE
JOB NO.:	LS1702123	
DWG. NO.:	1702123LVM	

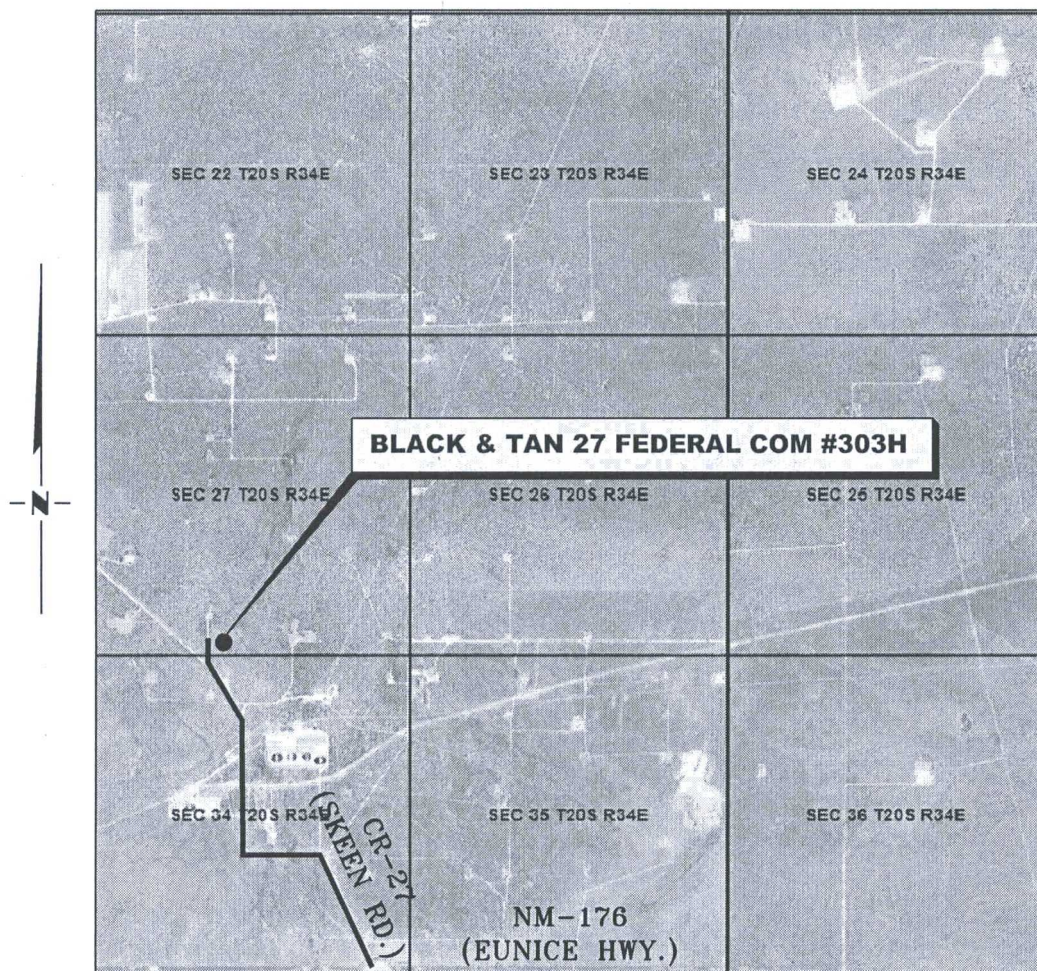
RRC

308 W. BROADWAY ST., HOBBS, NM 88240 (575) 964-8200

SCALE: 1" = 1000'
DATE: 2-21-2017
SURVEYED BY: JM/HD
DRAWN BY: LPS
APPROVED BY: RMH
SHEET: 1 OF 1

VICINITY MAP

NOT TO SCALE



*SECTION 27, TWP. 20 SOUTH, RGE. 34 EAST,
N. M. P. M., LEA CO., NEW MEXICO*

OPERATOR: Apache Corporation
LEASE: Black & Tan 27 Federal Com
WELL NO.: 303H

LOCATION: 215' FSL & 2110' FWL
ELEVATION: 3715'

Firm No.: TX 10193838 NM 4655451

Copyright 2016 - All Rights Reserved

NO.	REVISION	DATE
JOB NO.:	LS1702123	
DWG. NO.:	1702123VM	

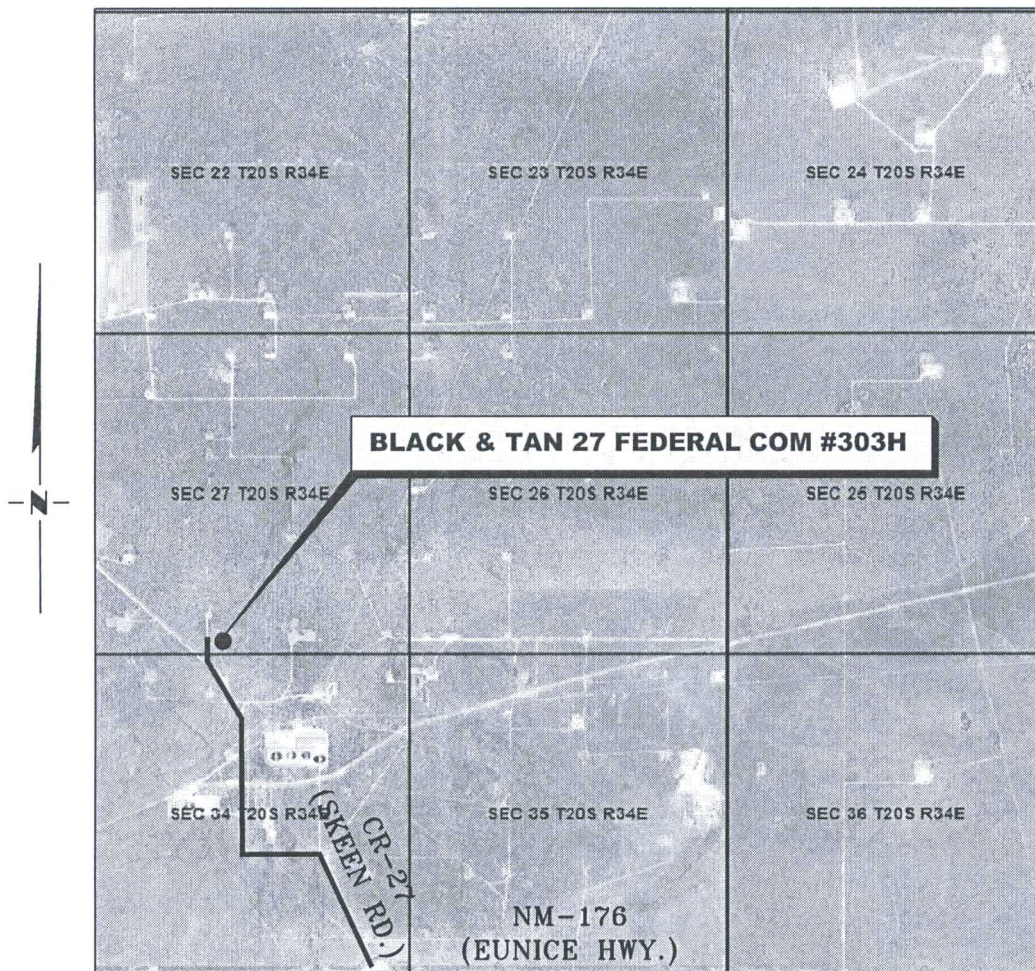
RRC

308 W. BROADWAY ST., HOBBS, NM 88240 (575) 964-8200

SCALE:	N. T. S.
DATE:	2-21-2017
SURVEYED BY:	JM/HD
DRAWN BY:	LPS
APPROVED BY:	RMH
SHEET:	1 OF 1

VICINITY MAP

NOT TO SCALE



*SECTION 27, TWP. 20 SOUTH, RGE. 34 EAST,
N. M. P. M., LEA CO., NEW MEXICO*

OPERATOR: Apache Corporation
LEASE: Black & Tan 27 Federal Com
WELL NO.: 303H

LOCATION: 215' FSL & 2110' FWL
ELEVATION: 3715'

Firm No.: TX 10193838 NM 4655451

Copyright 2016 - All Rights Reserved

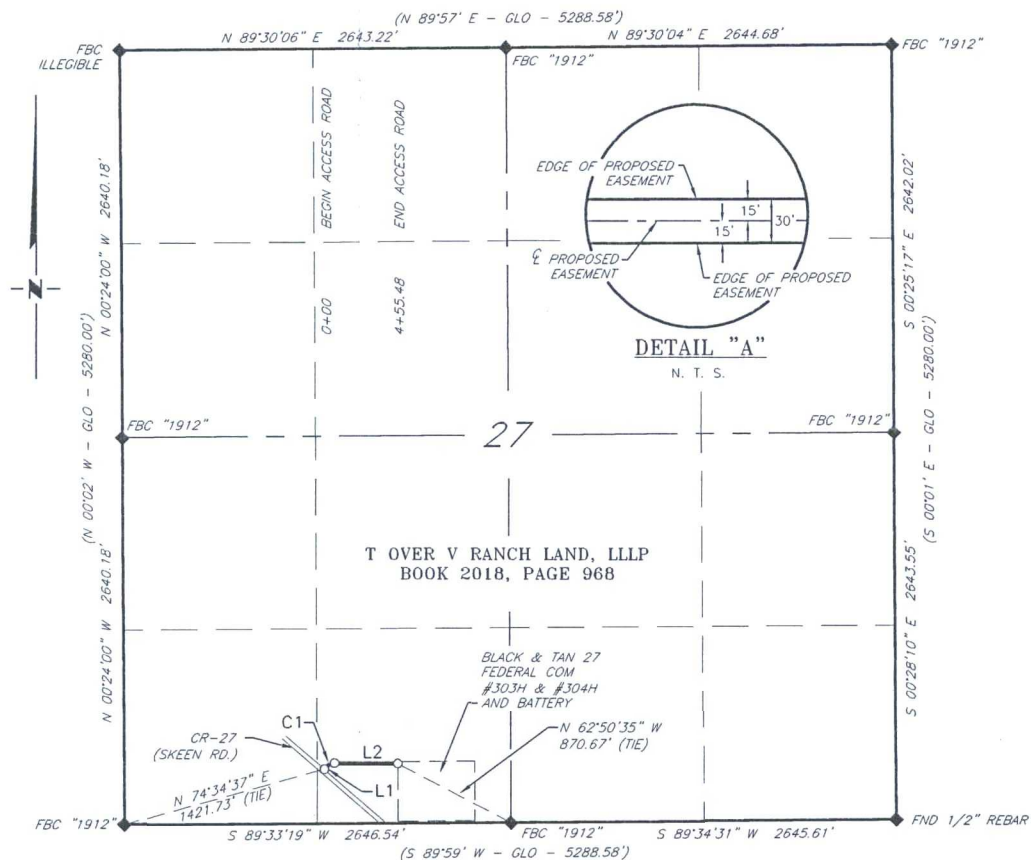
NO.	REVISION	DATE
JOB NO.: LS1702123		
DWG. NO.: 1702123VM		

RRC

308 W. BROADWAY ST., HOBBS, NM 88240 (575) 964-8200

SCALE: N. T. S.
DATE: 2-21-2017
SURVEYED BY: JM/HD
DRAWN BY: LPS
APPROVED BY: RMH
SHEET: 1 OF 1

APACHE CORPORATION
PROPOSED ACCESS ROAD FOR
THE BLACK & TAN 27 FEDERAL COM #303H & #304H
SECTION 27, T20S, R34E,
N. M. P. M., LEA CO., NEW MEXICO



LINE TABLE		
LINE	BEARING	LENGTH
L1	N 40°26'25" E	22.45'
L2	S 89°45'11" E	433.03'

CURVE TABLE C1	
CENTRAL ANGLE	49°48'24"
RADIUS	70.00'
CHORD	N 65°20'37" E 58.95'
ARC DISTANCE	60.85'

SCALE: 1" = 1000'
0 500 1000

BEARINGS ARE GRID NAD 27
NM EAST
DISTANCES ARE HORIZ. GROUND.

LEGEND

() RECORD DATA - GLO

◆ FOUND MONUMENT
AS NOTED

— PROPOSED ACCESS ROAD

I, R. M. Howett, a N. M. Professional Surveyor, hereby certify that I prepared this plat from an actual survey made on the ground under my direct supervision, said survey and plat meet the Min. Stds. for Land Surveying in the State of N. M. and are true and correct to the best of my knowledge and belief.

Robert M. Howett
Robert M. Howett NM PS 19680



Firm No.: TX 10193838 NM 4655451

Copyright 2016 - All Rights Reserved

NO.	REVISION	DATE
JOB NO.:	LS1702123	
DWG. NO.:	1702123RD1	

RRC

308 W. BROADWAY ST., HOBBS, NM 88240 (575) 964-8200

SCALE: 1" = 1000'
DATE: 2-21-2017
SURVEYED BY: JM/HD
DRAWN BY: LPS
APPROVED BY: RMH
SHEET: 1 OF 2

APACHE CORPORATION
PROPOSED ACCESS ROAD FOR
THE BLACK & TAN 27 FEDERAL COM #303H & #304H
SECTION 27, T20S, R34E,
N. M. P. M., LEA CO., NEW MEXICO

DESCRIPTION

A strip of land 30 feet wide, being 455.48 feet or 27.605 rods in length, lying in Section 27, Township 20 South, Range 34 East, N. M. P. M., Lea County, New Mexico, being 15 feet left and 15 feet right of the following described survey of centerline across the lands of T Over V Ranch Land, LLLP, according to a deed filed for record in Book 2018, Page 968, of the Deed Records of Lea County, New Mexico;

BEGINNING at Engr. Sta. 0+00, a point in the Southwest quarter of Section 27, which bears N 74°34'37" E, 1,421.73 feet from a brass cap, stamped "1912", found for the Southwest corner of Section 27;

Thence N 40°26'25" E, 22.45 feet, to Engr. Sta. 0+22.45, a point of curvature of a curve to the right of the herein described centerline;

Thence Northeasterly along said curve to the right with a central angle of 49°48'24", a radius of 70.00 feet, a chord which bears N 65°20'37" E, 58.95 feet, for an arc distance of 60.85 feet to a point of tangency of the herein described centerline;

Thence S 89°45'11" E, 433.03 feet, to Engr. Sta. 4+55.48, the End of Survey, a point in the Southwest quarter of Section 27, which bears N 62°50'36" W, 870.67 feet from a brass cap, stamped "1912", found for the South quarter corner of Section 27.

Said strip of land contains 0.314 acres, more or less, and is allocated by forties as follows::

SE 1/4 SW 1/4 27.605 Rods 0.314 Acres

Firm No.: TX 10193838 NM 4655451

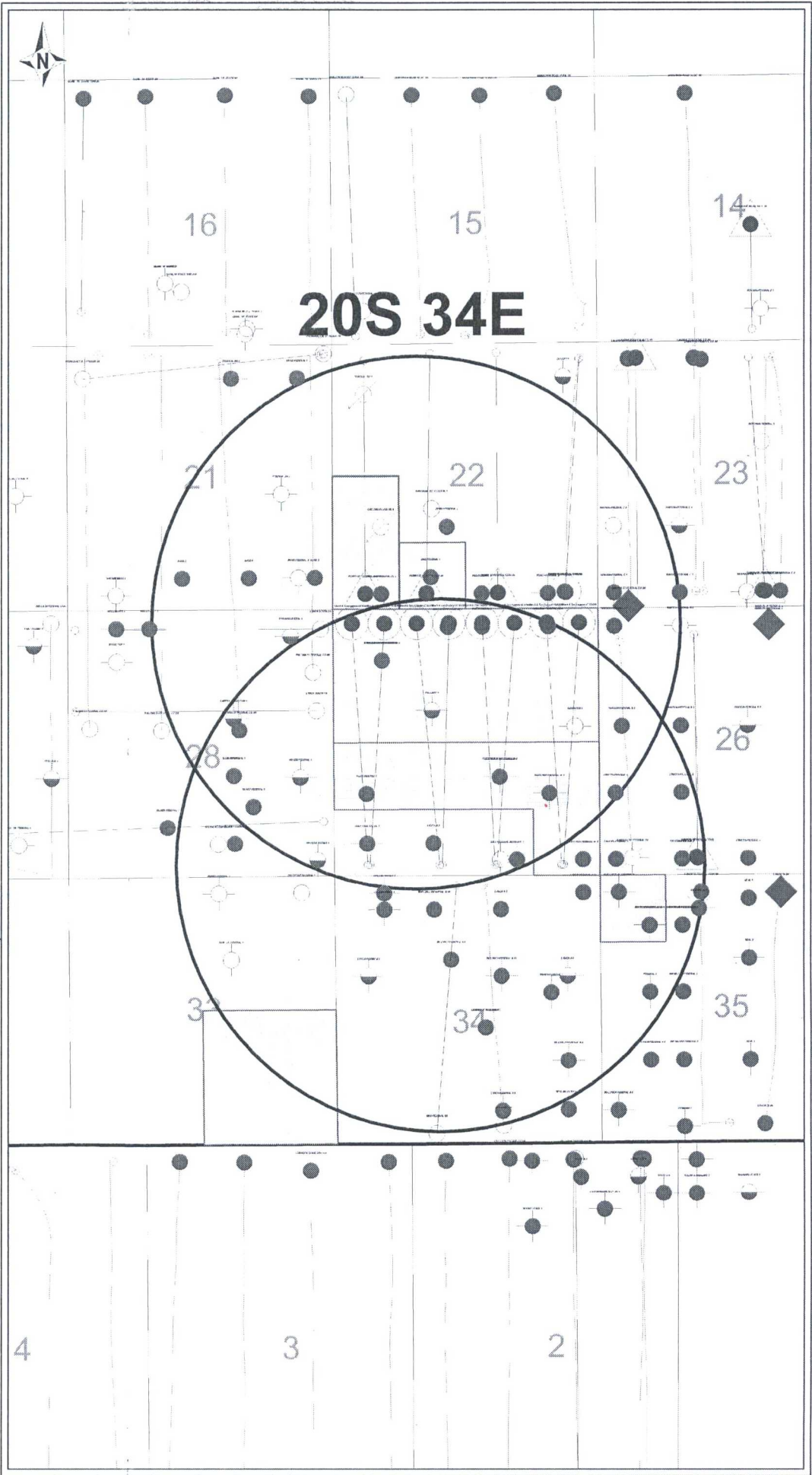
Copyright 2016 - All Rights Reserved

NO.	REVISION	DATE
JOB NO.:	LS1702123	
DWG. NO.:	1702123RD1	



308 W. BROADWAY ST., HOBBS, NM 88240 (575) 964-8200

SCALE: 1" = 1000'
DATE: 2-21-2017
SURVEYED BY: JM/HD
DRAWN BY: LPS
APPROVED BY: RMH
SHEET: 1 OF 2



Apache Corporation

Black & Tan Federal 27 303H



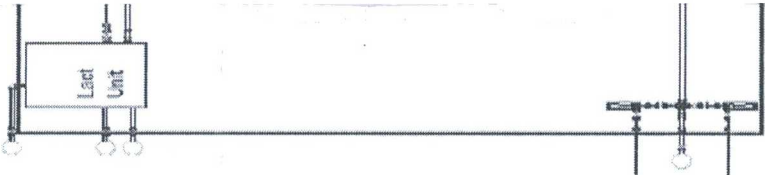
POSTED WELL DATA
Well Label

WELL SYMBOLS

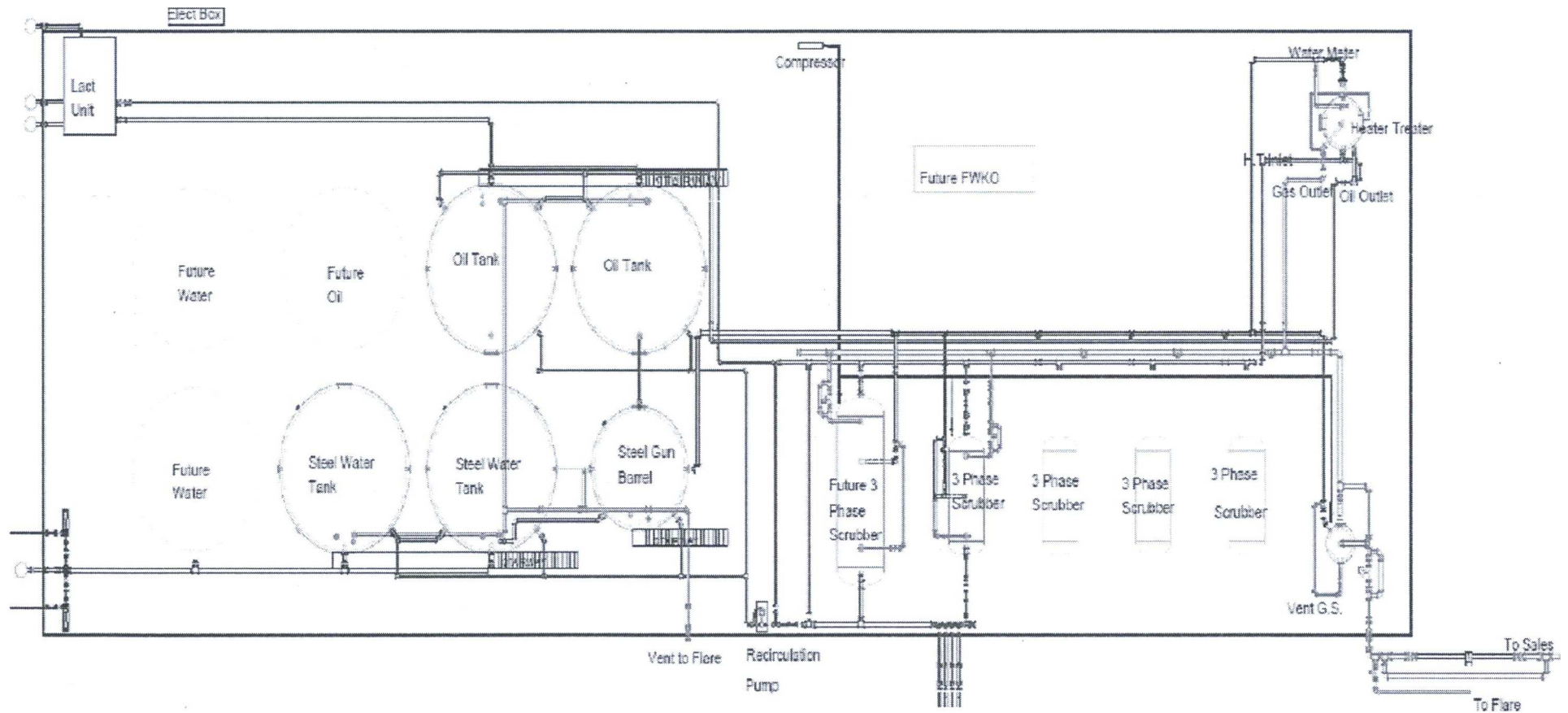
- Dry Hole, With Show of Oil & Gas
- Dry Hole, With Show of Oil
- Dry Hole
- Gas Well
- Location
- Oil Well
- Active Producer
- T & A' D
- ◆ Pilot Hole
- P&A Oil
- Proposed Location
- Permitted Location

April 3, 2017

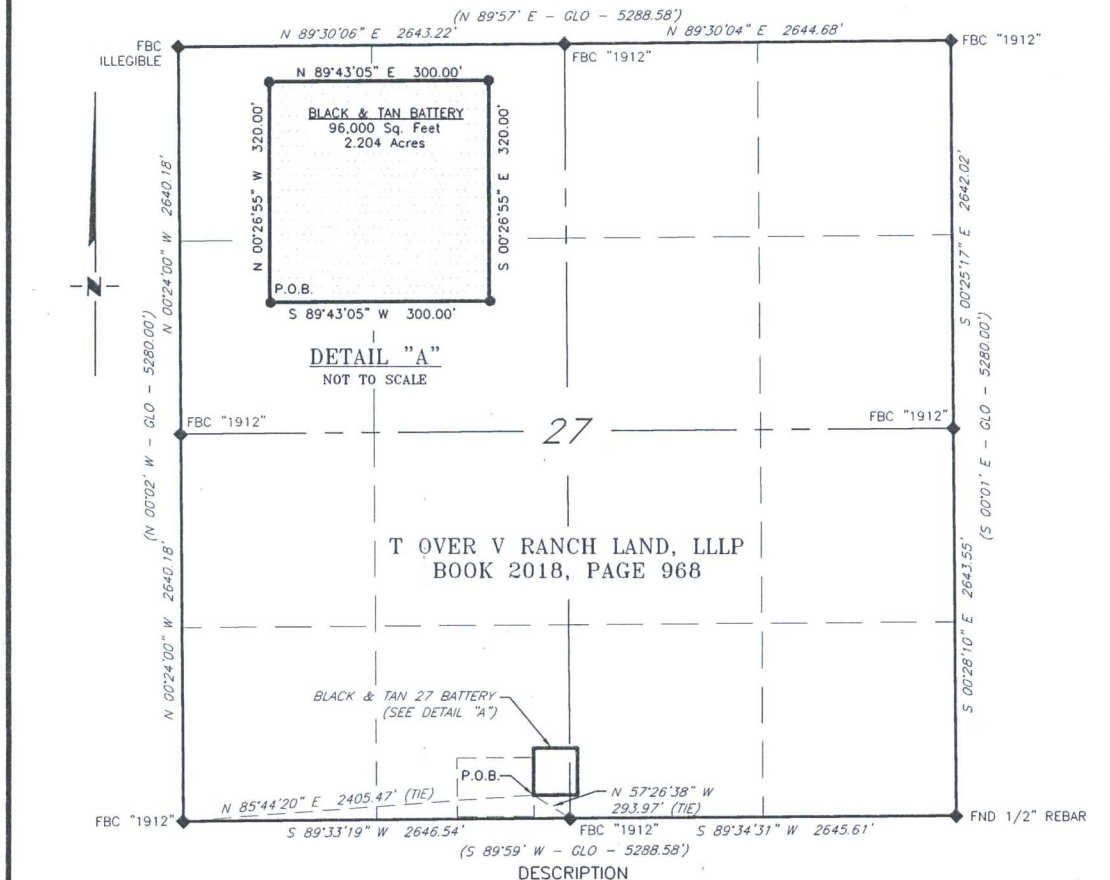
PETRA 4/3/2017 4:36:41 PM



APACHE CORPORATION
BLACK & TAN 27 FEDERAL COM BATTERY PROPOSAL



APACHE CORPORATION
SURVEY OF THE PROPOSED TANK BATTERY FOR
THE BLACK & TAN 27 FEDERAL COM WELLS
SITUATED WITHIN THE SOUTH 1/2, SECTION 27, T20S, R34E,
N. M. P. M., LEA CO., NEW MEXICO



A tract of land situated within the South 1/2 of Section 27, Township 20 South, Range 34 East, N. M. P. M., Lea County, New Mexico, across the lands of T Over V Ranch Land, LLLP, according to a deed filed for record in Book 2018, Page 968, of the Deed Records of Lea County, New Mexico;

BEGINNING at a point, which bears N 85°44'20" E, 2,405.47 feet, from a brass cap, stamped "1912", found for the Southwest corner of Section 27 and being N 57°26'38" W, 293.97 feet from a brass cap, stamped "1912", found for the South quarter corner of Section 27;

Thence N 00°26'55" W, 320.00 feet;

Thence N 89°43'05" E, 300.00 feet;

Thence S 00°26'55" E, 320.00 feet;

Thence S 89°43'05" W, 300.00 feet, to the Point Of Beginning.

Said tract of land contains 96,000 square feet or 2.204 acres, more or less and is allocated by forties as follows:

SCALE: 1" = 1000'
 0 500 1000
 BEARINGS ARE GRID NAD 27
 NM EAST
 DISTANCES ARE HORIZ. GROUND.
 LEGEND
 () RECORD DATA - GLO
 FOUND MONUMENT
 AS NOTED

SE 1/4 SW 1/4 78,880 Sq. Ft. 1.811 Acres
 SW 1/4 SE 1/4 17,120 Sq. Ft. 0.393 Acres

I, R. M. Howett, a N. M. Professional Surveyor, hereby certify that I prepared this plat from an actual survey made on the ground under my direct supervision, said survey and plat meet the Min. Stds. for Land Surveying in the State of N. M. and are true and correct to the best of my knowledge and belief.

Robert M. Howett
 Robert M. Howett NM PS 19680



Firm No.: TX 10193838 NM 4655451

Copyright 2016 - All Rights Reserved

NO.	REVISION	DATE
JOB NO.:	LS1702123	
DWG. NO.:	1702123BAT	

RRC

308 W. BROADWAY ST., HOBBS, NM 88240 (575) 964-8200

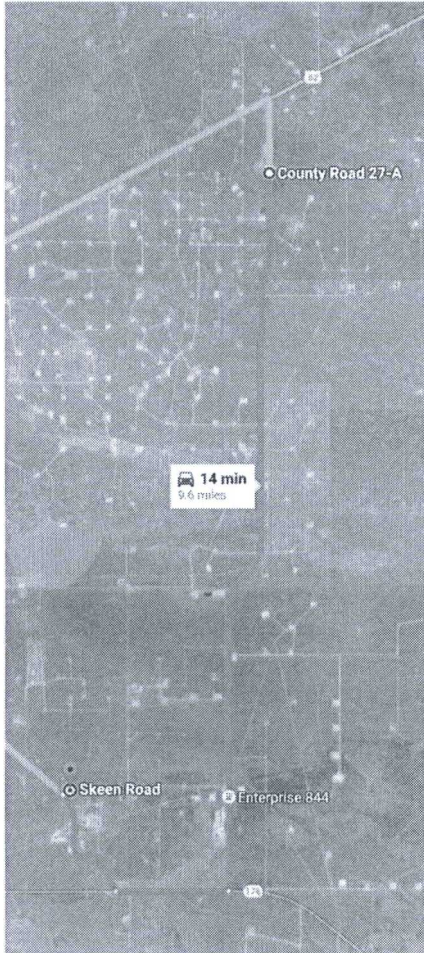
SCALE: 1" = 1000'
DATE: 2-21-2017
SURVEYED BY: JM/HD
DRAWN BY: LPS
APPROVED BY: RMH
SHEET: 1 OF 1

Black and Tan 27 Federal COM #303H Fresh Water Sources

Source:

Marathon Road Water Station

32.625672, -103.515428



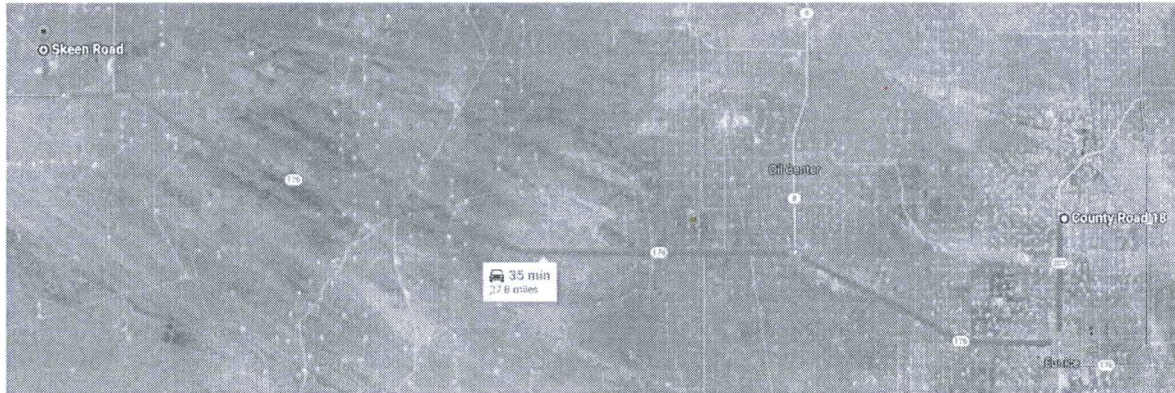
- ↑ Head south on County Rd 27-A
7.2 mi
- ↘ Turn right onto NM-176 W
1.1 mi
- ↘ Turn right onto Skeen Rd
1.3 mi
- ↘ Turn right
322 ft

Black and Tan 27 Federal COM#303H Brine Water Sources

Source:

Key Energy State S Brine & FW Station

32.484070, -103.158475

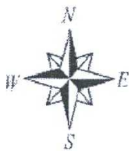


County Road 18

Eunice, NM 88231

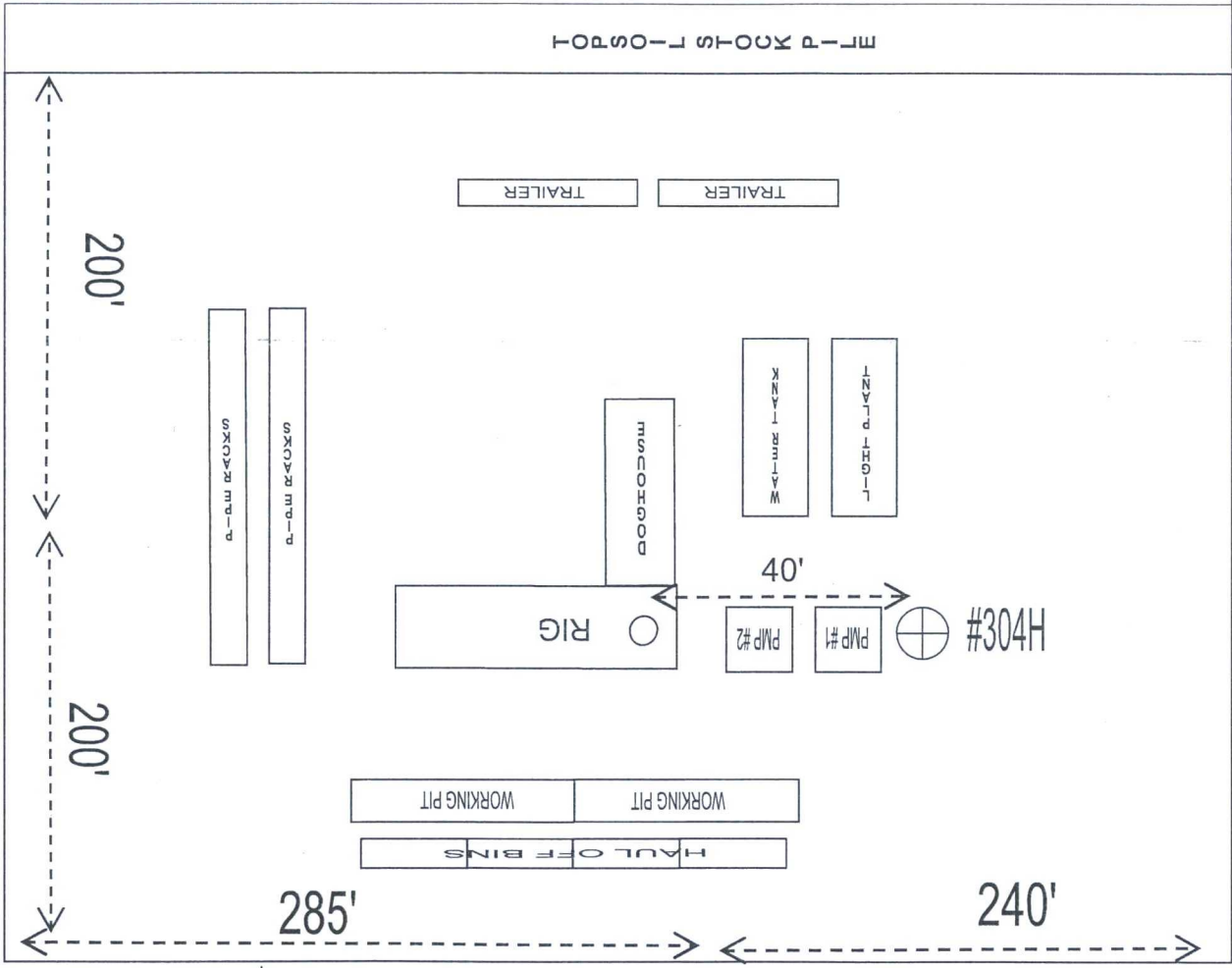
- ↑ Head west toward NM-207 S
367 ft
- ↙ Turn left onto NM-207 S
2.9 mi
- ↘ Turn right onto NM-176 W/Ave O
Continue to follow NM-176 W
6.4 mi
- ↙ Turn left to stay on NM-176 W
17.1 mi
- ↘ Turn right onto Skeen Rd
1.3 mi
- ↘ Turn right
322 ft

RIG ORIENTATION & LAYOUT **BLACK & TAN 27 FEDERAL COM 303H**



Proposed Road
 Approx 455.48'

V DOOR



Proposed Battery

Existing lease road
 (will NOT be used)

HOBBS OCD

AUG 14 2017

RECEIVED

PRIVATE SURFACE OWNER AGREEMENT

OPERATOR: APACHE CORPORATION

WELL NAME: BLACK AND TAN 27 FEDERAL COM #303H

SECTION: 27 TOWNSHIP: 20S RANGE: 34E

LOCATION: SHL: 215' FSL & 2110' FWL COUNTY: LEA STATE: NM
BHL: 280' FNL & 1670' FWL

LEASE NUMBER: SHL: NMLC-029519B BHL: NMNM-082/NMNM-0000897

STATEMENT OF SURFACE USE

The surface to the subject land is owned by T over V Ranch
c/o DANN BERRY
PO BOX 160
EUNICE, NM 88231 575-369-5266

The surface owner has been contacted regarding the drilling of the subject well, and an agreement for surface use has been negotiated.

CERTIFICATION: I hereby certify that the statements made in this statement are to the best of my knowledge, true and correct.

NAME: DEAN JARRETT

SIGNATURE: 

DATE: 3-23-2017

TITLE: SR. SURFACE LANDMAN

To expedite your Application to Drill please fax the completed form to the
Bureau of Land Management (575) 234-5927 or (575) 885-9264
Attn: Legal Instruments Examiner
620 E. Green Street
Carlsbad, NM 88220

The original document with signature should be mailed as soon as possible.