

District I
1625 N. French Dr., Hobbs, NM 88240
Phone: (575) 393-6161 Fax: (575) 393-9720
District II
811 S. First St., Artesia, NM 88210
Phone: (575) 748-1283 Fax: (575) 748-9720
District III
1000 Rio Brazos Road, Aztec, NM 87410
Phone: (505) 334-6178 Fax: (505) 334-6170
District IV
1220 S. St. Francis Dr., Santa Fe, NM 87505
Phone: (505) 476-3460 Fax: (505) 476-3462

State of New Mexico
Energy, Minerals & Natural Resources Department
OIL CONSERVATION DIVISION
1220 South St. Francis Dr.
Santa Fe, NM 87505

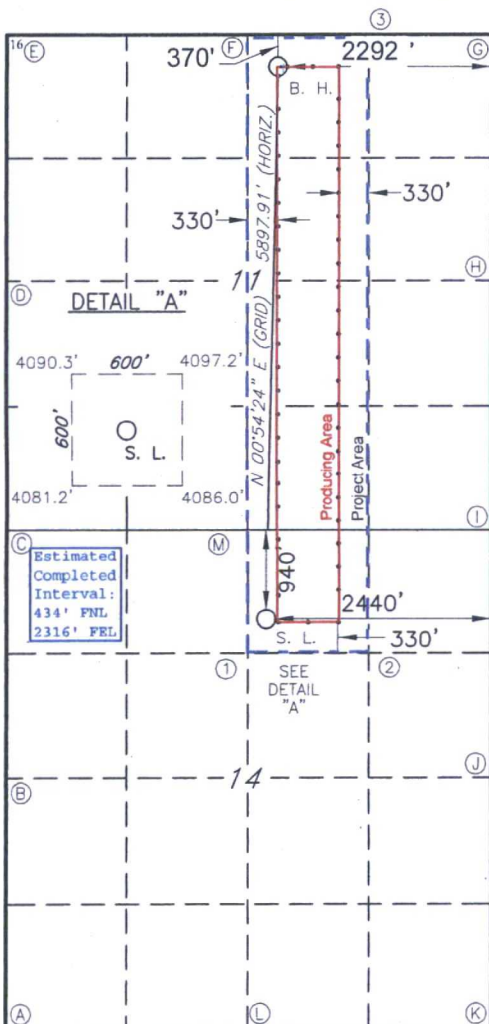
Form C-102
Revised August 1, 2011
Submit one copy to appropriate
District Office

☐ AMENDED REPORT

WELL LOCATION AND ACREAGE DEDICATION PLAT

¹ API Number 30-025-43157		² Pool Code 44500		³ Pool Name Maljamar; Yeso, West					
⁴ Property Code 40481		⁵ Property Name FLAT HEAD FEDERAL COM						⁶ Well Number 15H	
⁷ GRID NO. 229137		⁸ Operator Name COG OPERATING, LLC						⁹ Elevation 4088'	
¹⁰ Surface Location									
UL or lot no. B	Section 14	Township 17S	Range 32E	Lot Idn	Feet from the 940	North/South line NORTH	Feet From the 2440	East/West line EAST	County LEA
¹¹ Bottom Hole Location If Different From Surface									
UL or lot no. B	Section 11	Township 17S	Range 32E	Lot Idn	Feet from the 370	North/South line NORTH	Feet from the 2292	East/West line EAST	County LEA
¹² Dedicated Acres 200		¹³ Joint or Infill		¹⁴ Consolidation Code		¹⁵ Order No.			

No allowable will be assigned to this completion until all interest have been consolidated or a non-standard unit has been approved by the division.



GEODETIC DATA
NAD 83 GRID - NM EAST
SURFACE LOCATION
N 669557.9 - E 724662.4
LAT: 32.83921649' N
LONG: 103.73644377' W
BOTTOM HOLE
N 675453.7 - E 724755.6
LAT: 32.85541975' N
LONG: 103.73603157' W

CORNER DATA
NAD 83 GRID - NM EAST
A: FOUND BRASS CAP "1913"
N 665220.0 - E 721849.6
B: FOUND BRASS CAP "1913"
N 667859.2 - E 721833.3
C: FOUND BRASS CAP "1913"
N 670497.8 - E 721816.9
D: FOUND BRASS CAP "1913"
N 673135.6 - E 721803.6
E: FOUND BRASS CAP "1913"
N 675771.1 - E 721786.3
F: FOUND BRASS CAP "1913"
N 675782.2 - E 724424.0
G: FOUND BRASS CAP "1913"
N 675793.6 - E 727062.9
H: FOUND BRASS CAP "1913"
N 673155.6 - E 727079.7
I: FOUND BRASS CAP "1913"
N 670517.3 - E 727096.3
J: FOUND BRASS CAP "1913"
N 667878.3 - E 727113.4
K: FOUND BRASS CAP "1913"
N 665238.4 - E 727129.7
L: FOUND BRASS CAP "1913"
N 665229.1 - E 724489.8
M: FOUND BRASS CAP "1913"
N 670496.2 - E 724451.5
1: CALCULATED CORNER
N 669188.1 - E 724461.0
2: CALCULATED CORNER
N 669193.0 - E 725782.8
3: CALCULATED CORNER
N 675787.9 - E 725743.5

17 OPERATOR CERTIFICATION
I hereby certify that the information contained herein is true and complete to the best of my knowledge and belief, and that this organization either owns a working interest or unleased mineral interest in the land including the proposed bottom hole location or has a right to drill this well at this location pursuant to a contract with an owner of such a mineral or working interest, or to a voluntary pooling agreement or a compulsory pooling order heretofore entered by the division.

Signature: *Kanicia Castillo* Date: 4/27/17
Printed Name: Kanicia Castillo
E-mail Address: kcastillo@concho.com

18 SURVEYOR CERTIFICATION
I hereby certify that the well location shown on this plat was plotted from field notes of actual surveys made by me or under my supervision, and that the same is true and correct to the best of my belief.

2-19-16
Date of Survey
Signature and Seal of Professional Surveyor
19680
Certificate Number