

EOG Resources, Inc.

Hound 30 CTB

3-30-25S-34E

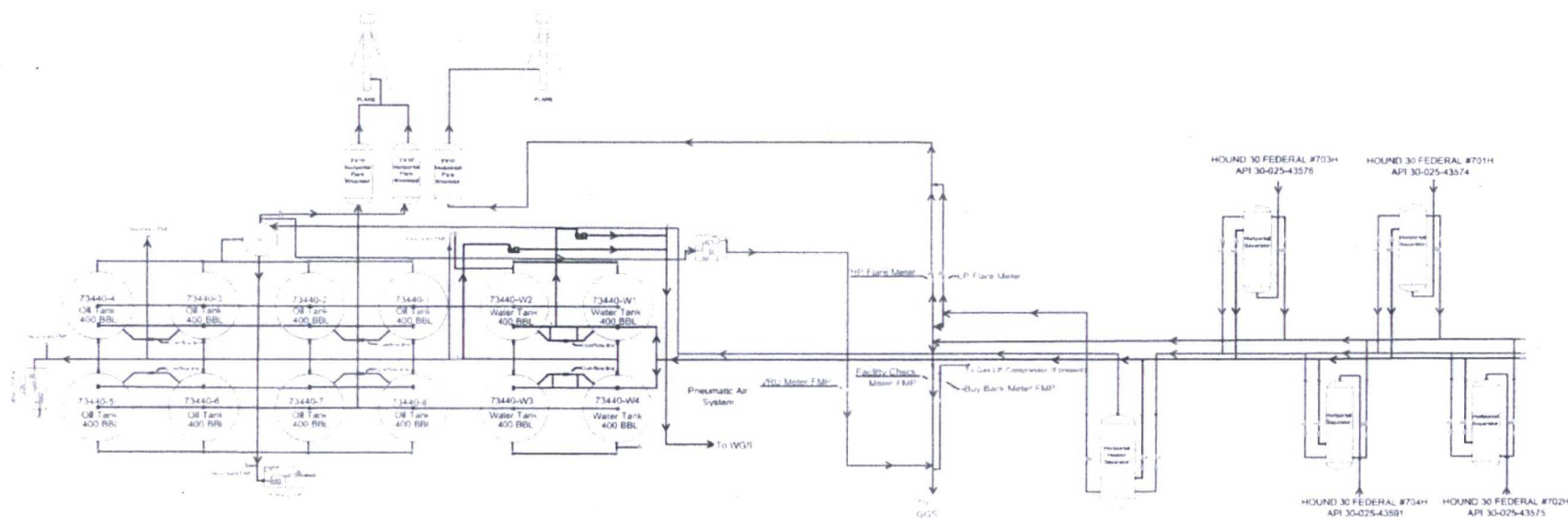
6/15/2017

LEGEND

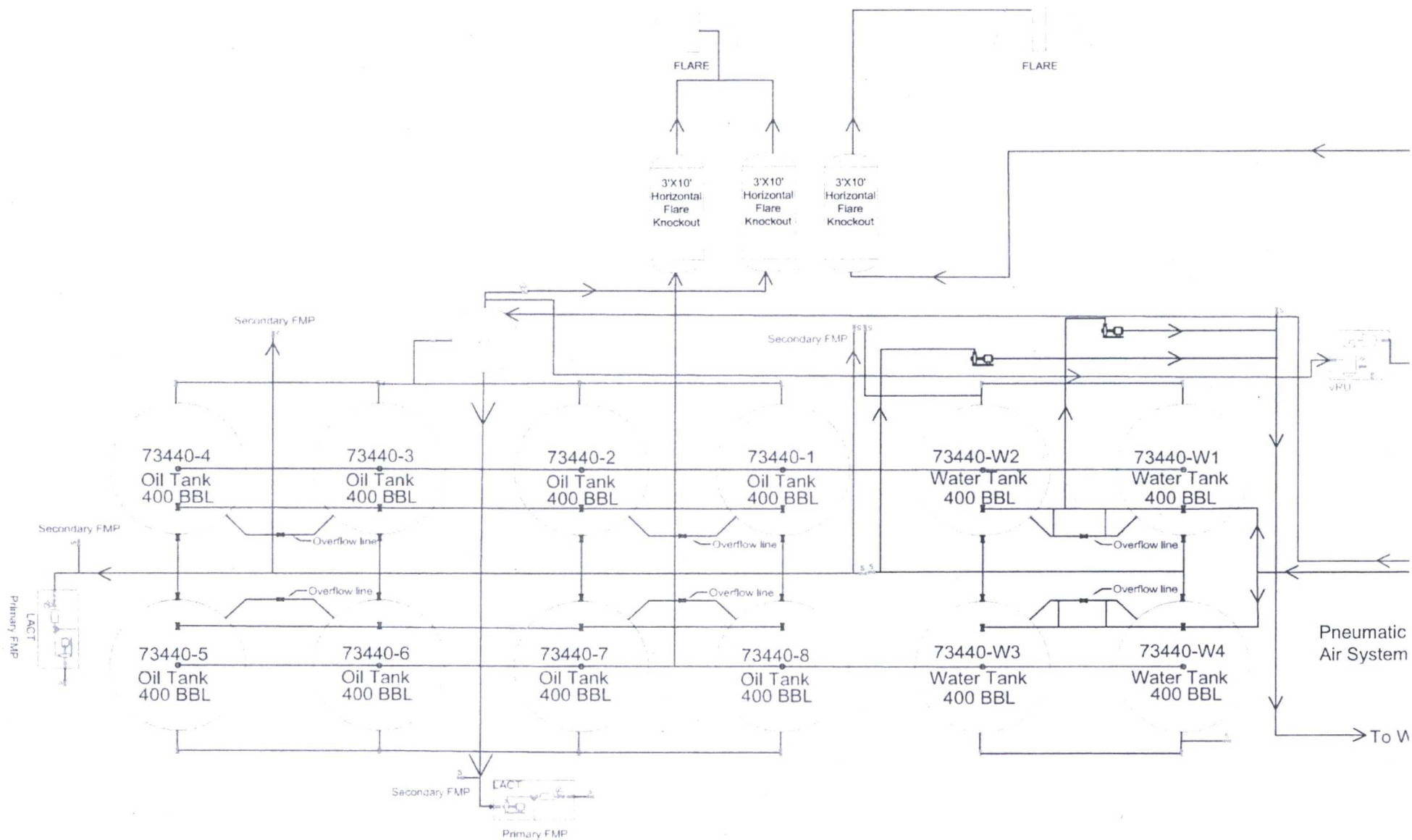
	Valve Open		Turbine/ Coriolis Meter
	Valve Closed		Oil
	Valve Sealed		Gas
	Orifice Meter		Water

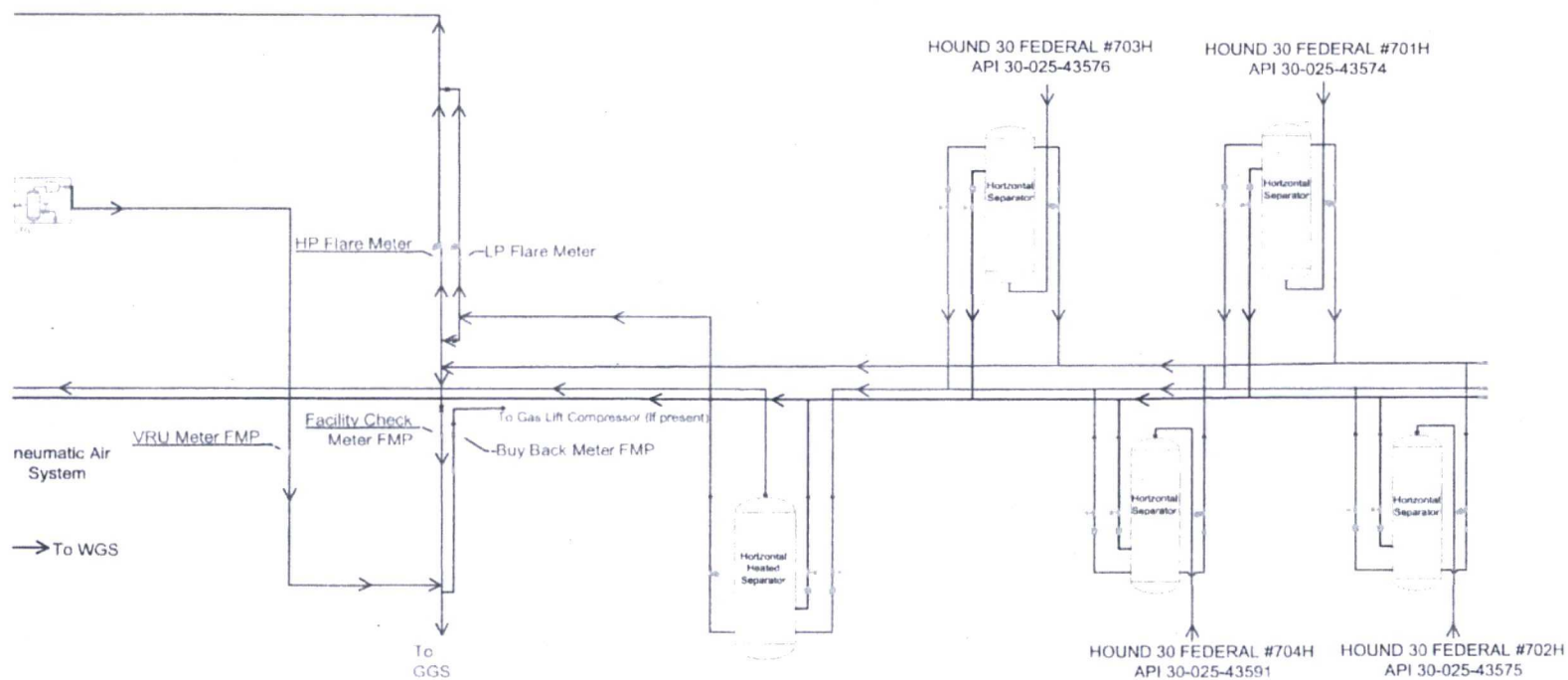
FACILITY DIAGRAM

Shown: Major equipment, vessels, process piping, and valves
 Not shown: Auxiliary process systems such as pneumatic air system, gas lift system, roll lines, recirculating lines, vent lines, and small drain lines
PRODUCTION PHASE: All valves that provide access to production are effectively sealed in the closed position.
SALES THROUGH LACT UNITS: Sale is measured through LACT units. All other valves that provide access to production (load-out valves) are effectively sealed in the closed position.
WATER TANKS: If the possibility for oil to enter water tanks exists through common recirculating or equalizing lines, oil tanks are isolated from water tanks by valves effectively sealed in the closed position.
WELL SPECIFIC MEASUREMENT: The production from each well will flow into a dedicated 3-phase separator and the production stream will be separated into 3 independent streams (gas, oil, and water) by the separator and each stream will be measured individually after it exits the separator. The gas will be measured using a senior orifice meter and used to allocate total volume measured at the facility check meter, high pressure flare meter, and low pressure flare meter.



Facility Overview: Please see pages 2 and 3 for details.





Bureau of Land Management

Hobbs Field Office

414 W. Taylor

Hobbs, New Mexico

505.393.3612

WATER PRODUCTION & DISPOSAL INFORMATION

Well: Hound 30 Fed 701H

NWSW Sec 30 T25S, R34E

30-025-43574

1. Name of formations producing water on lease: WOLFCAMP
2. Amount of water produced from all formations in barrels per day 2000-7000 BWPD
3. How water is stored on lease Tanks 4-400 bbl tanks
4. How water is moved to disposal facility Pipeline/Trucked
5. Disposal Facility:
 - a. Facility Operators name EOG RESOURCES, INC
 - b. Name of facility or well name & number
Black Bear 36 State #5
30-025-40585
H-36-25S-33E
 - c. Type of facility or wells WDW
 - d. Permit No SWD -1359