

DISTRICT I  
1625 N. FRENCH DR., HOBBS, NM 88240  
Phone: (505) 393-8181 Fax: (505) 393-0720

DISTRICT II  
811 S. FIRST ST., ARTESIA, NM 88210  
Phone: (505) 748-1283 Fax: (505) 748-0720

DISTRICT III  
1000 RIO BRAZOS RD., AZTEC, NM 87410  
Phone: (505) 334-8178 Fax: (505) 334-8170

DISTRICT IV  
1250 S. ST. FRANCIS DR., SANTA FE, NM 87506  
Phone: (505) 476-3400 Fax: (505) 476-3482

State of New Mexico  
Energy, Minerals & Natural Resources Department  
**OIL CONSERVATION DIVISION**  
1220 SOUTH ST. FRANCIS DR.  
Santa Fe, New Mexico 87505

**HOBBS OCD**

AUG 21 2017

Form C-102

Revised August 1, 2011

Submit one copy to appropriate

District Office

**RECEIVED**

☐ AMENDED REPORT

**WELL LOCATION AND ACREAGE DEDICATION PLAT**

API Number <b>30-025-43931</b>	Pool Code <b>17980</b>	Pool Name <b>Dogie Draw; Wolfcamp</b>
Property Code <b>319419</b>	Property Name <b>WHITE FALCON 16 FEDERAL COM</b>	Well Number <b>21H</b>
GRID No. <b>229137</b>	Operator Name <b>COG OPERATING, LLC</b>	Elevation <b>3246.4'</b>

**Surface Location**

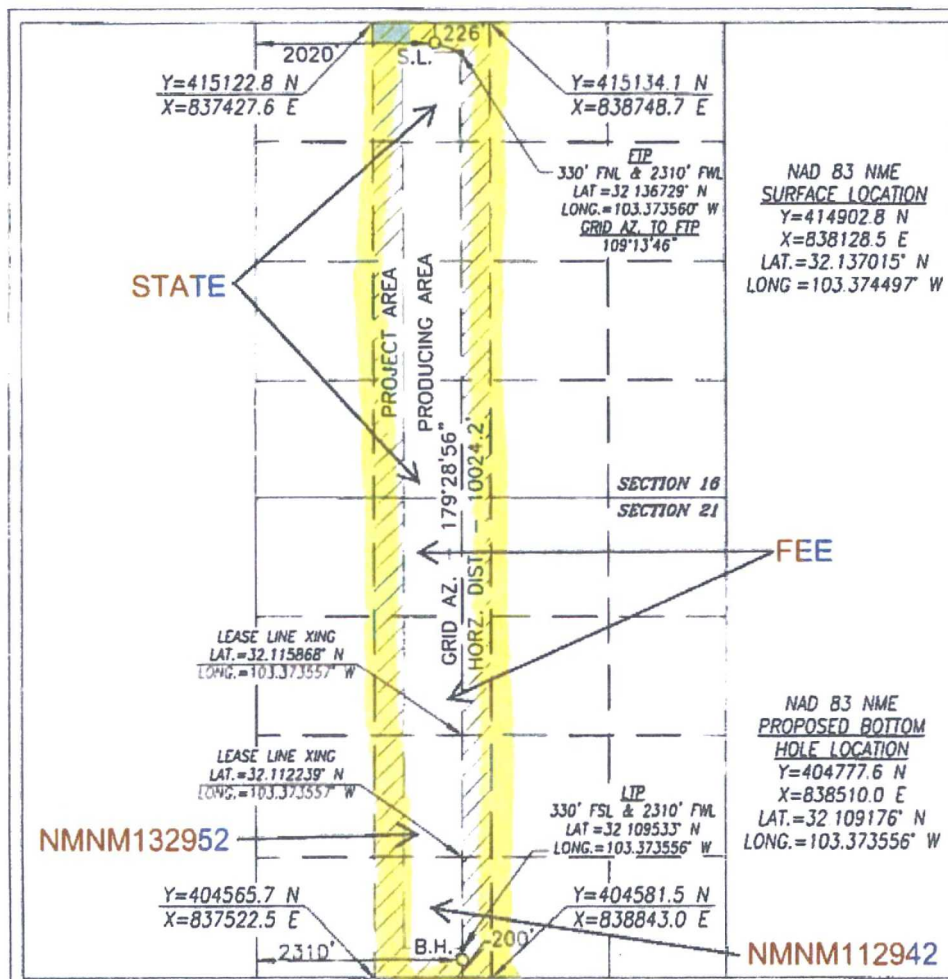
UL or lot No.	Section	Township	Range	Lot Idn	Feet from the	North/South line	Feet from the	East/West line	County
C	16	25-S	35-E		226	NORTH	2020	WEST	LEA

**Bottom Hole Location If Different From Surface**

UL or lot No.	Section	Township	Range	Lot Idn	Feet from the	North/South line	Feet from the	East/West line	County
N	21	25-S	35-E		200	SOUTH	2310	WEST	LEA

Dedicated Acres	Joint or Infill	Consolidation Code	Order No.
<b>320</b>			

NO ALLOWABLE WILL BE ASSIGNED TO THIS COMPLETION UNTIL ALL INTERESTS HAVE BEEN CONSOLIDATED  
OR A NON-STANDARD UNIT HAS BEEN APPROVED BY THE DIVISION



**OPERATOR CERTIFICATION**

I hereby certify that the information herein is true and complete to the best of my knowledge and belief, and that this organization either owns a working interest or unleased mineral interest in the land including the proposed bottom hole location or has a right to drill this well at this location pursuant to a contract with an owner of such mineral or working interest, or to a voluntary pooling agreement or a compulsory pooling order heretofore entered by the division.

Signature: *Mayte Reyes* Date: **3-27-17**

Printed Name: **Mayte Reyes**

E-mail Address: **mreyes1@concho.com**

**SURVEYOR CERTIFICATION**

I hereby certify that the well location shown on this plat was plotted from field notes of actual surveys made by me or under my supervision, and that the same is true and correct to the best of my belief.

**FEBRUARY 6, 2017**

Date of Survey

Signature & Seal of Professional Surveyor



Certificate No. **CHAD HARCROW 17777**  
W.O. # **17-272** DRAWN BY: **JH**