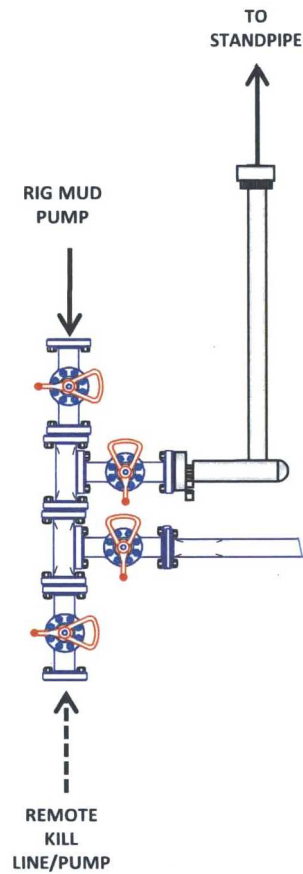
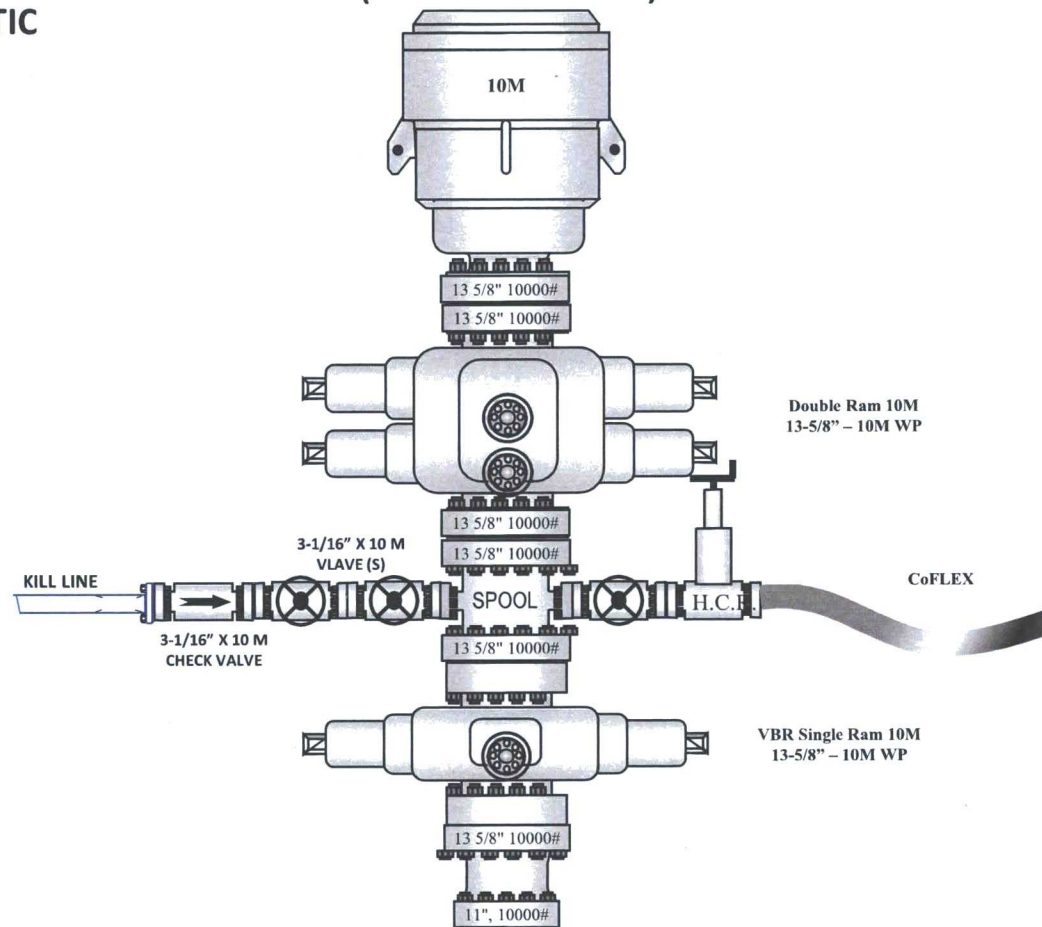


10M BOP Stack

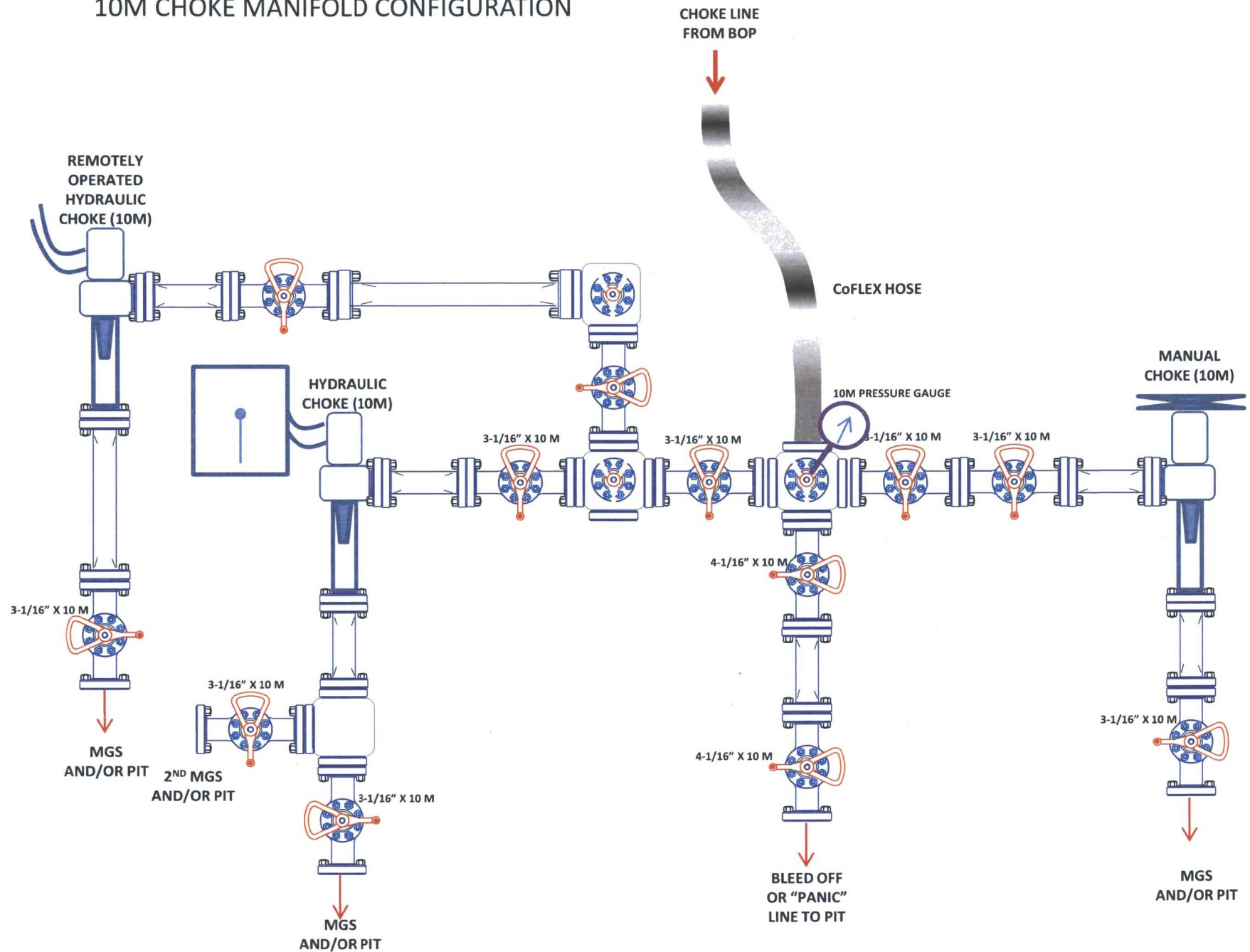
10M REMOTE KILL SCHEMATIC



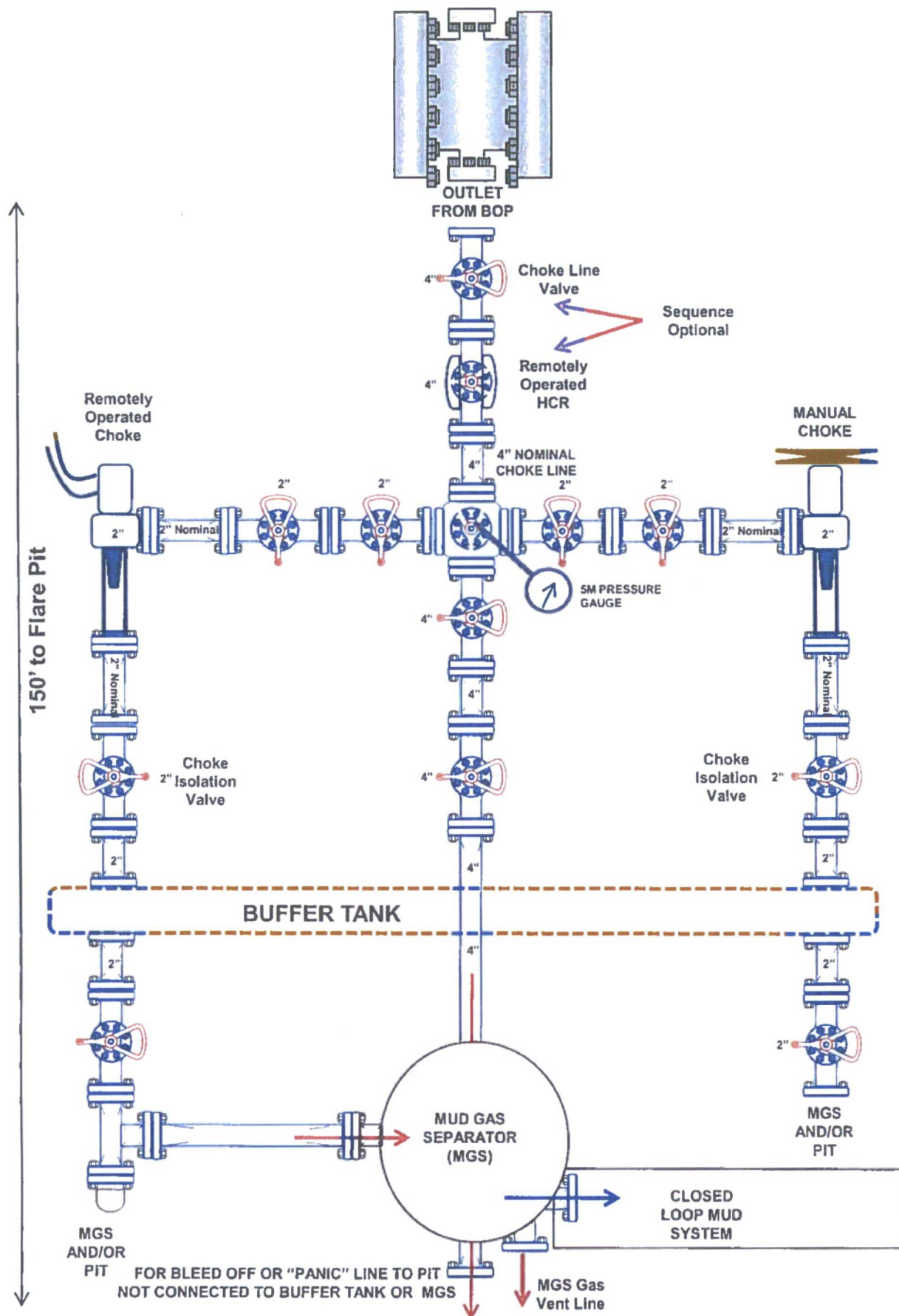
10M BOP Stack (10M Annular)



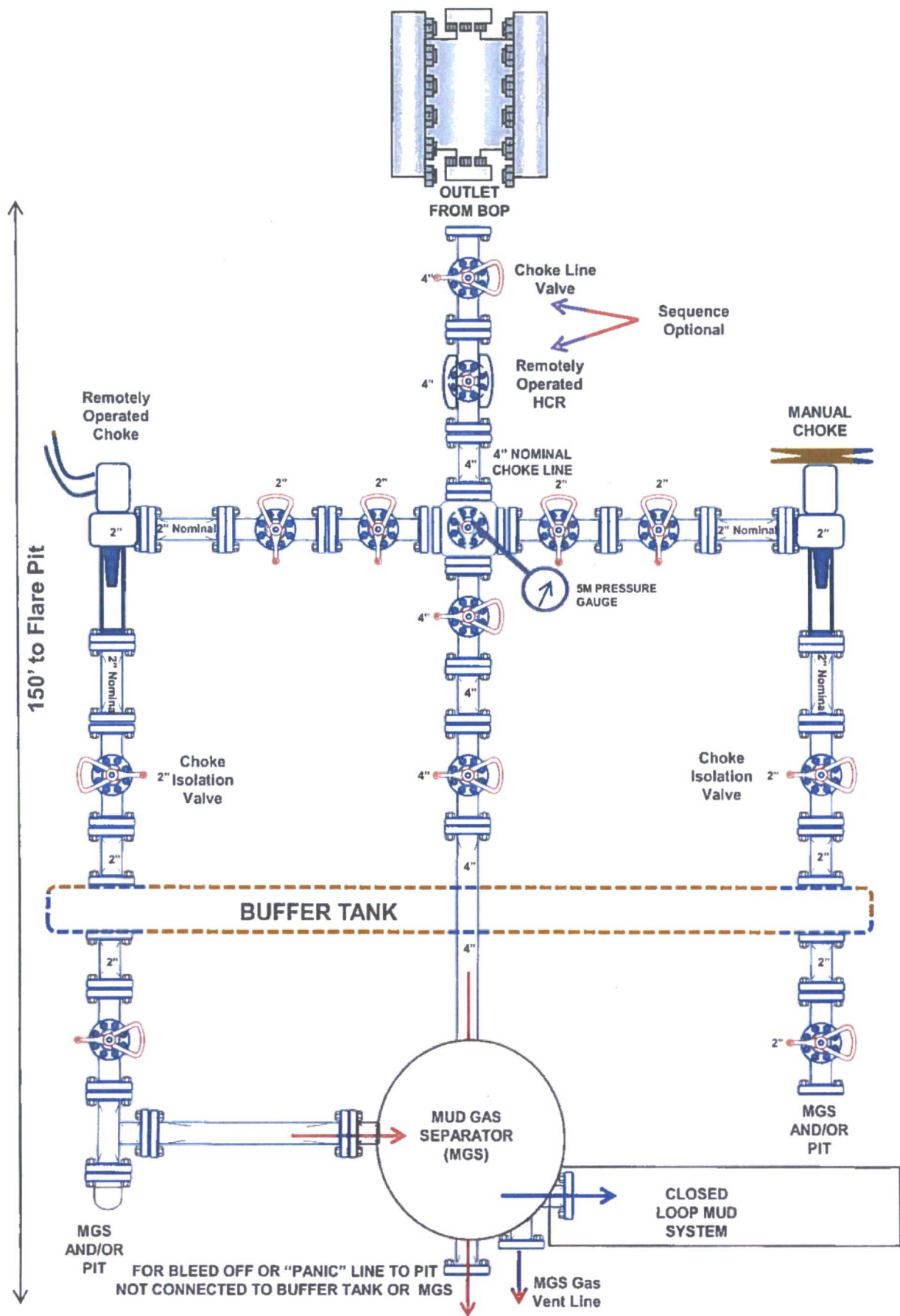
10M CHOKE MANIFOLD CONFIGURATION



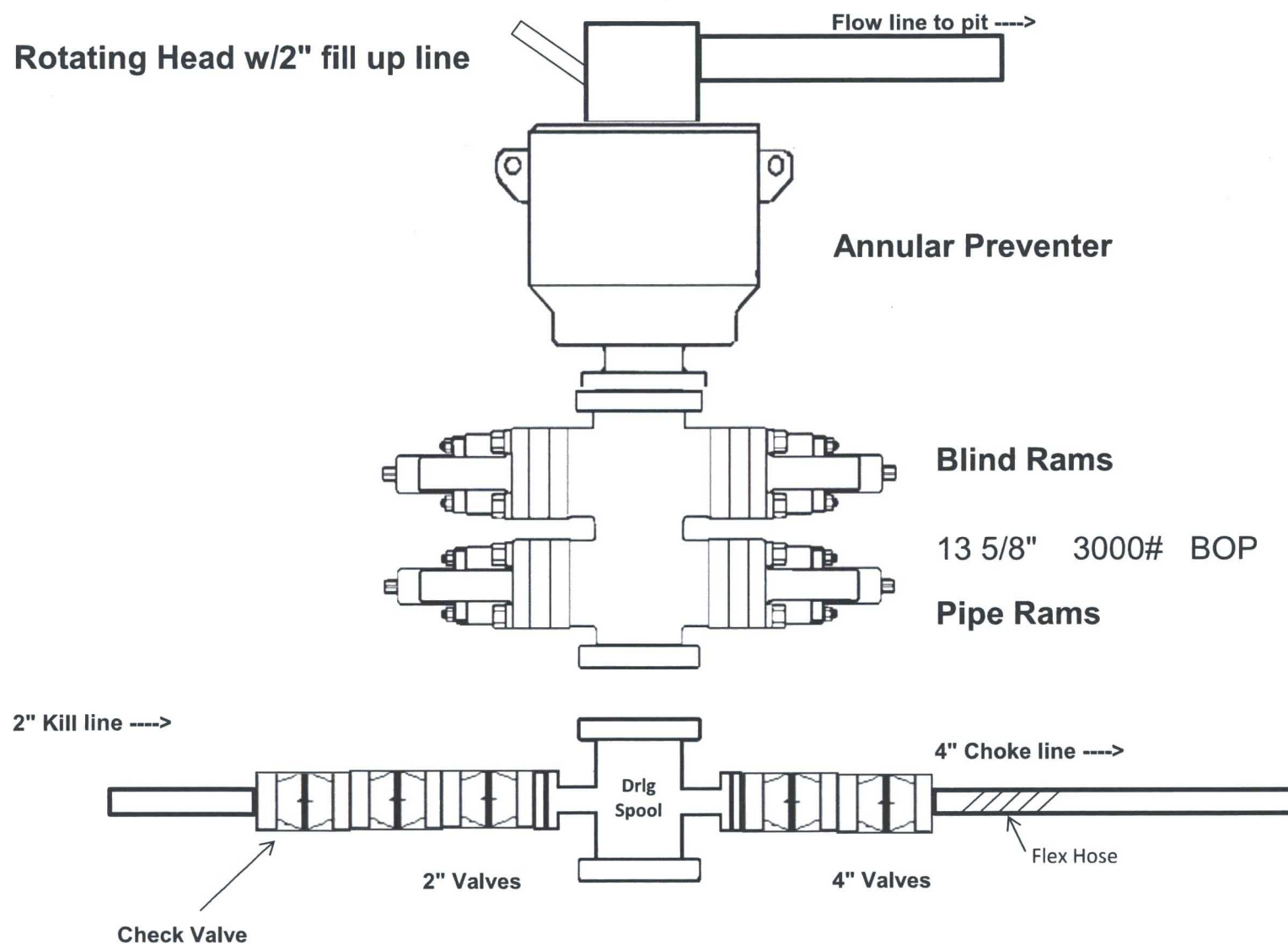
3M Choke Manifold Equipment (WITH MGS + CLOSED LOOP)



5M Choke Manifold Equipment (WITH MGS + CLOSED LOOP)





3,000 psi BOP Schematic





Midwest Hose
& Specialty, Inc.

Internal Hydrostatic Test Certificate

General Information		Hose Specifications	
Customer	Hobbs	Hose Assembly Type	Rotary/Vibrator
MWH Sales Representative	Ryan Rynolds	Certification	API 7K/FSL Level 2
Date Assembled	11/19/2015	Hose Grade	D
Location Assembled	OKC	Hose Working Pressure	5000
Sales Order #	271739	Hose Lot # and Date Code	11834 11/14
Customer Purchase Order #	302337	Hose I.D. (Inches)	3.5"
Assembly Serial # (Pick Ticket #)	326000	Hose O.D. (Inches)	4.89"
Hose Assembly Length	25'	Aarmor (yes/no)	No
Fittings			
End A		End B	
Stem (Part and Revision #)	R3.5X64WB	Stem (Part and Revision #)	R3.5X64WB
Stem (Heat #)	A144783	Stem (Heat #)	A144783
Ferrule (Part and Revision #)	RF3.5	Ferrule (Part and Revision #)	RF3.5
Ferrule (Heat #)	J1628	Ferrule (Heat #)	J1628
Connection . Flange Hammer Union Part	4-1/16 5000	Connection (Part #)	4-1/16 5000
Connection (Heat #)	14032501	Connection (Heat #)	1404H321
Nut (Part #)	N/A	Nut (Part #)	N/A
Nut (Heat #)	N/A	Nut (Heat #)	N/A
Dies Used	5.49"	Dies Used	5.49"
Hydrostatic Test Requirements			
Test Pressure (psi)	10,000	Hose assembly was tested with ambient water temperature.	
Test Pressure Hold Time (minutes)	11 1/2		
Date Tested	Tested By	Approved By	
11/19/2015			



Midwest Hose
& Specialty, Inc.

Certificate of Conformity

Customer: **Hobbs**

Customer P.O.# **302337**

Sales Order # **271739**

Date Assembled: **11/19/2015**

Specifications

Hose Assembly Type: **Rotary/Vibrator**

Assembly Serial # **326000**

Hose Lot # and Date Code **11834 11/14**

Hose Working Pressure (psi) **5000**

Test Pressure (psi) **10000**

We hereby certify that the above material supplied for the referenced purchase order to be true according to the requirements of the purchase order and current industry standards.

Supplier:

Midwest Hose & Specialty, Inc.

3312 S I-35 Service Rd

Oklahoma City, OK 73129

Comments:

Approved By

Kim Thomas

Date

11/19/2015



Midwest Hose
& Specialty, Inc.

Internal Hydrostatic Test Graph

November 19, 2015

Customer: Hobbs

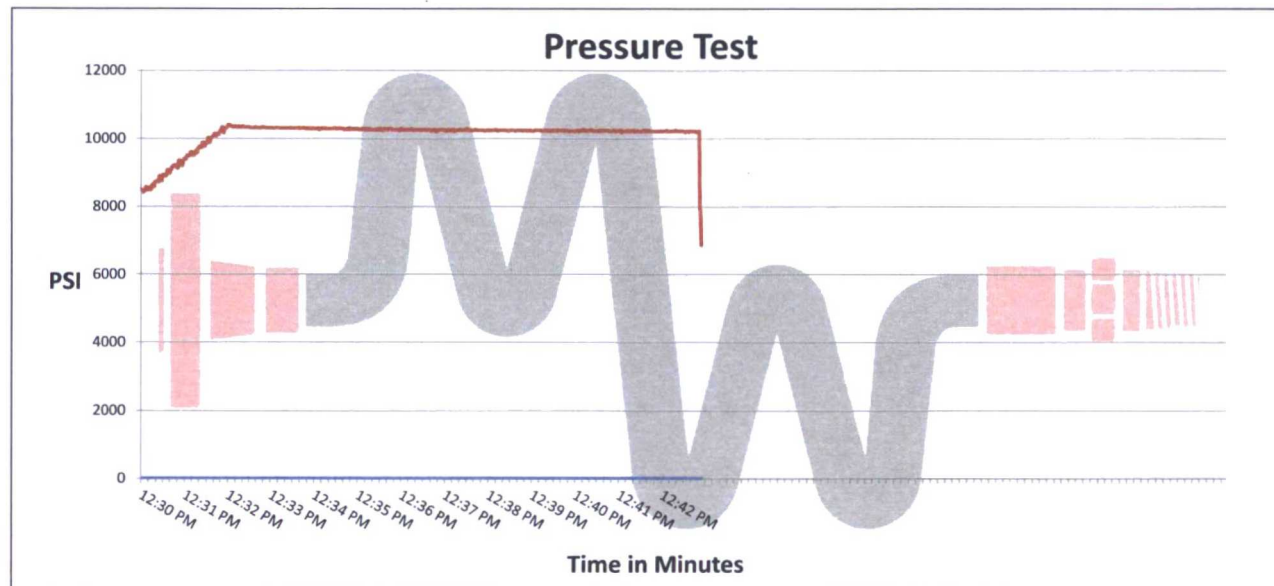
Pick Ticket #: 326000

Hose Specifications

<u>Hose Type</u>	<u>Length</u>
D	25'
<u>I.D.</u>	<u>O.D.</u>
3.5"	4.89"
<u>Working Pressure</u>	<u>Burst Pressure</u>
5000 PSI	Standard Safety Multiplier Applies

Verification

<u>Type of Fitting</u>	<u>Coupling Method</u>
4 1/16 5K	Swage
<u>Die Size</u>	<u>Final O.D.</u>
5.49"	5.50"
<u>Hose Serial #</u>	<u>Hose Assembly Serial #</u>
11834	326000



Test Pressure
10000 PSI

Time Held at Test Pressure
11 2/4 Minutes

Actual Burst Pressure

Peak Pressure
10473 PSI

Comments: Hose assembly pressure tested with water at ambient temperature.

Tested By: James Hawkins

Approved By: Kim Thomas

X _____

X _____

**Hose Assembly & Test Report**

General Information		Hose Specifications	
Customer	Hobbs	Hose Assembly Type	chase + k11
Date Assembled	6-26-14	Certification	API 7K
Location Assembled	OKC	Hose Grade	D
Sales Order #	216 297	Hose Working Pressure	5,000
Customer Purchase Order #	237 512	Hose Lot #	8309
Hose Assembly Serial #	260212	Hose Date Code	04/12
Pick Ticket Line Item	0010	Hose I.D. (Inches)	3.5 inches
Hose Assembly Length (Feet and Inches)	50 feet	Hose O.D. (Inches)	5.49
Contact Information Phone #		Armor (yes/no)	yes
Fittings			
End A		End B	
Stem (Part and Revision #)	R3.5 x 64 WD	Stem (Part and Revision #)	R3.5 x 64 WD
Stem (Heat #)	13114050225	Stem (Heat #)	13114050225
Stem (Rockwell Hardness HRB #)	—	Stem (Rockwell Hardness HRB #)	—
Ferrule (Part and Revision #)	RF 3.5	Ferrule (Part and Revision #)	RF 3.5
Ferrule (Heat #)	126151	Ferrule (Heat #)	372114
Ferrule (Rockwell Hardness HRB #)	—	Ferrule (Rockwell Hardness HRB #)	—
Connection (Part #)	4 1/16 SK	Connection (Part #)	4 1/16 SK
Connection (Heat #)	U3360	Connection (Heat #)	U3360
Connection (Brinell Hardness HB #)	—	Connection (Brinell Hardness HB #)	—
Stress Relief #	17614	Stress Relief #	17614
Welding #	MKR	Welding #	MKR
X-ray #	—	X-ray #	—
Assembly Information			
End A		End B	
Skive O.D. (Inches)	5.04	Skive O.D. (Inches)	4.92
Swager Dies (1st pass)	5.62	Swager Dies (1st pass)	5.53
Swager Dies (2nd pass)	—	Swager Dies (2nd pass)	—
Final Swage O.D. (Inches)	5.14	Final Swage O.D. (Inches)	5.48
Compression % (See Crimp Calculator)	74%	Compression % (See Crimp Calculator)	22%
Swaged By		Charles Ash	
Hydrostatic Test Requirements			
Test Pressure (psi)	10,000	Hold Time (minutes)	13 1/4
Tested By	Charles Ash	Date Tested	6-26-14
This is to certify that the above Hose Assembly has been satisfactorily tested in accordance with MHSI procedure 8.2.4.2			
Final Verification			
Third Party Witness	<input checked="" type="checkbox"/> No	Hammer Unions	Yes <input checked="" type="checkbox"/> No
	<input checked="" type="checkbox"/> No	Safety Clamps	Yes <input checked="" type="checkbox"/> No
Customer or Third Party Witnessed By:			

5,000 psi BOP Schematic

