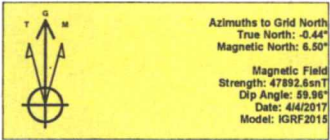




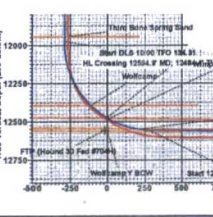
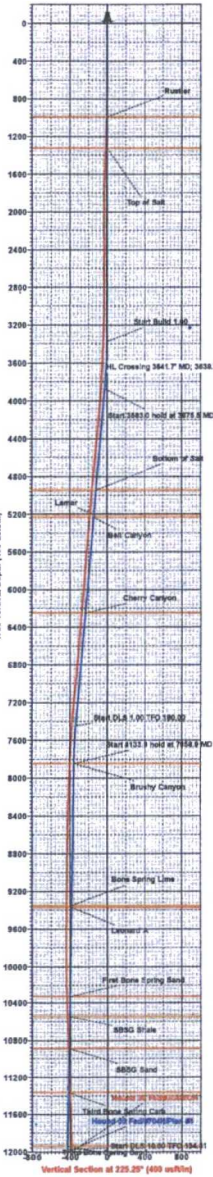
Lea County, NM (NAD 27 NME)  
 Hound 30 Fed #704H  
 H&P #647  
 Plan #1

PROJECT DETAILS: Lea County, NM (NAD 27 NME)  
 Geodetic System: US State Plane 1927 (Exact solution)  
 Datum: NAD 1927 (NADCON CONUS)  
 Ellipsoid: Clarke 1866  
 Zone: New Mexico East 3001  
 System Datum: Mean Sea Level

WELL DETAILS: #704H  
 Ground Level: 3323.0  
 KB = 25' @ 3348.0usrf (H&P #647)  
 Northing: 401218.00 Easting: 754765.00 Latitude: 32° 6' 1.412 N Longitude: 103° 30' 38.201 W



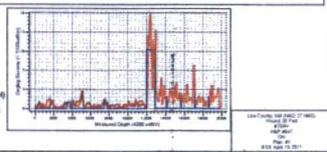
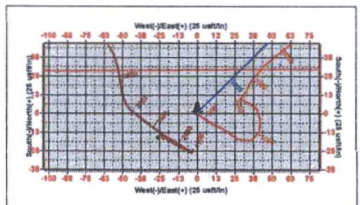
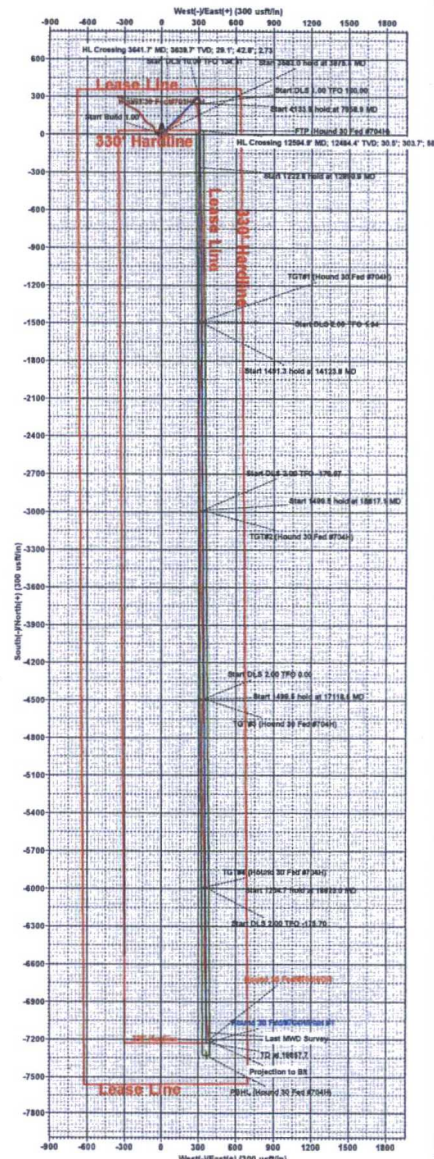
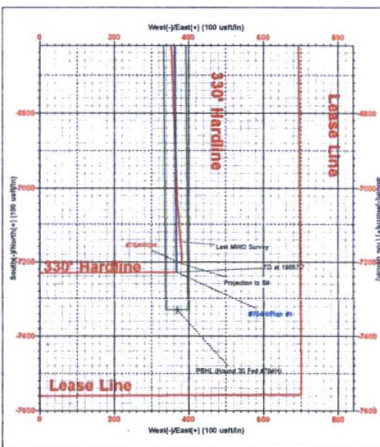
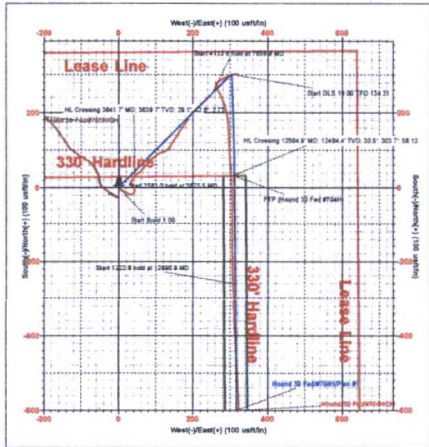
To convert a Magnetic Direction to a Grid Direction, Add 6.50°  
 To convert a Magnetic Direction to a True Direction, Add 6.94° East  
 To convert a True Direction to a Grid Direction, Subtract 0.44°



Sec	MD	Inc	Azi	TVD	+N/-S	+E/-W	Dleg	TFace	Vsect	Target
1	3375.0	0.00	0.00	3375.0	0.0	0.0	0.00	0.00	0.0	
2	3875.5	5.00	45.25	3874.8	15.4	15.5	1.00	45.25	-14.6	
3	7458.5	5.00	45.25	7444.2	235.4	237.5	0.00	0.00	-223.1	
4	7858.9	1.00	45.25	7844.0	250.2	252.4	1.00	180.00	-237.0	
5	11992.8	1.00	45.25	11977.2	301.0	303.6	0.00	0.00	-285.2	
6	12890.9	89.11	179.56	12557.0	-263.0	315.1	10.00	134.31	278.7	TGT#1 (Hound 30 Fed #704H)
7	14123.8	89.31	179.56	12576.1	-1485.6	324.5	0.00	0.00	1500.2	TGT#2 (Hound 30 Fed #704H)
8	14123.8	89.31	179.56	12576.1	-1495.7	324.6	2.00	1.94	1510.3	TGT#3 (Hound 30 Fed #704H)
9	15615.1	89.31	179.56	12594.0	-2985.9	336.0	0.00	0.00	3000.1	TGT#4 (Hound 30 Fed #704H)
10	15615.1	89.27	179.56	12594.0	-2988.8	336.0	2.00	-179.97	3002.1	PBHL (Hound 30 Fed #704H)
11	17116.6	89.27	179.56	12613.0	-4488.2	347.4	0.00	0.00	4500.1	
12	17116.6	89.31	179.56	12613.0	-4490.1	347.4	2.00	0.00	4502.0	
13	18618.0	89.31	179.56	12631.0	-5989.5	358.8	0.00	0.00	6000.0	
14	18618.0	89.31	179.56	12631.0	-5994.5	358.8	2.00	-175.70	6005.0	
15	18623.0	89.21	179.56	12631.1	-5994.5	358.8	2.00	-175.70	6005.0	
16	19857.7	89.21	179.56	12648.0	-7229.0	368.4	0.00	0.00	7238.4	

CASING DETAILS  
 No casing data is available

Name	TVD	+N/-S	+E/-W	Northing	Easting
TGT#1 (Hound 30 Fed #704H)	12576.0	-4485.6	324.5	399732.40	755009.54
TGT#2 (Hound 30 Fed #704H)	12594.0	-2986.9	336.0	398231.10	755100.96
TGT#3 (Hound 30 Fed #704H)	12613.0	-4488.2	347.4	396729.80	755112.39
TGT#4 (Hound 30 Fed #704H)	12631.0	-5989.5	358.8	395228.50	755123.81
PBHL (Hound 30 Fed #704H)	12648.0	-7329.0	369.0	393689.00	755134.00
FTP (Hound 30 Fed #704H)	12587.0	31.0	313.0	401248.00	755078.00





## **EOG Resources - Midland**

Lea County, NM (NAD 27 NME)

Hound 30 Fed

#704H

OH

Survey: Intrepid MWD

## **EOG PVA**

15 April, 2017



EOG Resources, Inc.  
EOG PVA

<b>Company:</b>	EOG Resources - Midland	<b>Local Co-ordinate Reference:</b>	Well #704H
<b>Project:</b>	Lea County, NM (NAD 27 NME)	<b>TVD Reference:</b>	KB = 25' @ 3348.0usft (H&P #647)
<b>Site:</b>	Hound 30 Fed	<b>MD Reference:</b>	KB = 25' @ 3348.0usft (H&P #647)
<b>Well:</b>	#704H	<b>North Reference:</b>	Grid
<b>Wellbore:</b>	OH	<b>Survey Calculation Method:</b>	Minimum Curvature
<b>Design:</b>	OH	<b>Database:</b>	EDM 5000.1 Single User Db

<b>Project</b>	Lea County, NM (NAD 27 NME)		
<b>Map System:</b>	US State Plane 1927 (Exact solution)	<b>System Datum:</b>	Mean Sea Level
<b>Geo Datum:</b>	NAD 1927 (NADCON CONUS)		
<b>Map Zone:</b>	New Mexico East 3001		

<b>Site</b>	Hound 30 Fed				
<b>Site Position:</b>		<b>Northing:</b>	401,122.00 usft	<b>Latitude:</b>	32° 6' 0.564 N
<b>From:</b>	Map	<b>Easting:</b>	753,414.00 usft	<b>Longitude:</b>	103° 30' 53.914 W
<b>Position Uncertainty:</b>	0.0 usft	<b>Slot Radius:</b>	13-3/16 "	<b>Grid Convergence:</b>	0.43 °

<b>Well</b>	#704H					
<b>Well Position</b>	+N/-S	0.0 usft	<b>Northing:</b>	401,218.00 usft	<b>Latitude:</b>	32° 6' 1.412 N
	+E/-W	0.0 usft	<b>Easting:</b>	754,765.00 usft	<b>Longitude:</b>	103° 30' 38.201 W
<b>Position Uncertainty</b>		0.0 usft	<b>Wellhead Elevation:</b>	0.0 usft	<b>Ground Level:</b>	3,323.0 usft

<b>Wellbore</b>	OH					
<b>Magnetics</b>	<b>Model Name</b>	<b>Sample Date</b>	<b>Declination (°)</b>	<b>Dip Angle (°)</b>	<b>Field Strength (nT)</b>	
	IGRF2015	4/4/2017	6.94	59.96	47,893	

<b>Design</b>	OH				
<b>Audit Notes:</b>					
<b>Version:</b>	1.0	<b>Phase:</b>	ACTUAL	<b>Tie On Depth:</b>	0.0
<b>Vertical Section:</b>	<b>Depth From (TVD) (usft)</b>	<b>+N/-S (usft)</b>	<b>+E/-W (usft)</b>	<b>Direction (°)</b>	
	0.0	0.0	0.0	177.12	



EOG Resources, Inc.  
EOG PVA

<b>Company:</b>	EOG Resources - Midland	<b>Local Co-ordinate Reference:</b>	Well #704H
<b>Project:</b>	Lea County, NM (NAD 27 NME)	<b>TVD Reference:</b>	KB = 25' @ 3348.0usft (H&P #647)
<b>Site:</b>	Hound 30 Fed	<b>MD Reference:</b>	KB = 25' @ 3348.0usft (H&P #647)
<b>Well:</b>	#704H	<b>North Reference:</b>	Grid
<b>Wellbore:</b>	OH	<b>Survey Calculation Method:</b>	Minimum Curvature
<b>Design:</b>	OH	<b>Database:</b>	EDM 5000.1 Single User Db

From (usft)	To (usft)	Survey (Wellbore)	Tool Name	Description
140.0	1,092.0	True Shot Gyro (OH)	CT_GYRO_MS	Continuous Gyro Multishot
1,159.0	19,862.0	Intrepid MWD (OH)	MWD	MWD - Standard

MD (usft)	Inc (°)	Azi (azimuth) (°)	TVD (usft)	N/S (usft)	E/W (usft)	DLeg (°/100usft)	Build (°/100usft)	Turn (°/100usft)	High to Plan (usft)	Right to Plan (usft)
1,092.0	2.70	123.00	1,091.4	-16.1	25.0	0.00	0.00	0.00	-29.7	0.1
1,159.0	2.60	122.00	1,158.3	-17.8	27.6	0.16	-0.15	-1.49	-32.8	-0.5
1,344.0	3.10	72.70	1,343.1	-18.5	35.9	1.31	0.27	-26.65	-28.8	-28.4
1,532.0	2.50	12.50	1,531.0	-13.0	41.7	1.52	-0.32	-32.02	3.7	-43.5
1,720.0	2.90	356.60	1,718.8	-4.3	42.3	0.45	0.21	-8.46	6.8	-42.0
1,908.0	1.80	312.40	1,906.6	2.5	39.8	1.09	-0.59	-23.51	27.7	-28.7
2,096.0	1.20	303.00	2,094.5	5.5	36.0	0.34	-0.32	-5.00	27.2	-24.2
2,284.0	0.80	292.10	2,282.5	7.1	33.1	0.23	-0.21	-5.80	28.0	-19.0
2,471.0	0.70	292.30	2,469.5	8.0	30.9	0.05	-0.05	0.11	25.5	-19.1
2,659.0	0.40	294.70	2,657.5	8.7	29.2	0.16	-0.16	1.28	22.9	-20.1
2,846.0	0.30	351.50	2,844.5	9.5	28.5	0.18	-0.05	30.37	-5.2	-29.6
3,033.0	1.00	78.20	3,031.5	10.3	30.1	0.55	0.37	46.36	-31.5	3.9
3,221.0	1.90	18.10	3,219.4	13.6	32.6	0.88	0.48	-31.97	-23.1	-26.8
3,408.0	2.70	31.50	3,406.3	20.3	35.9	0.51	0.43	7.17	-36.0	-20.0
3,596.0	2.80	42.20	3,594.1	27.5	41.3	0.28	0.05	5.69	-43.9	-11.9
3,641.7	2.73	43.38	3,639.7	29.1	42.8	0.21	-0.16	2.58	-44.4	-10.9
<b>HL Crossing 3641.7' MD; 3639.7' TVD; 29.1'; 42.8'; 2.73</b>										
3,784.0	2.50	47.50	3,781.9	33.7	47.4	0.21	-0.16	2.89	-43.1	-7.8
3,971.0	4.70	53.20	3,968.5	41.0	56.5	1.19	1.18	3.05	-39.9	-5.2
4,158.0	5.60	39.10	4,154.7	52.7	68.4	0.83	0.48	-7.54	-37.8	-14.9
4,345.0	5.10	41.70	4,340.9	66.0	79.7	0.30	-0.27	1.39	-39.6	-11.7



EOG Resources, Inc.  
EOG PVA

Company: EOG Resources - Midland  
 Project: Lea County, NM (NAD 27 NME)  
 Site: Hound 30 Fed  
 Well: #704H  
 Wellbore: OH  
 Design: OH

Local Co-ordinate Reference: Well #704H  
 TVD Reference: KB = 25' @ 3348.0usft (H&P #647)  
 MD Reference: KB = 25' @ 3348.0usft (H&P #647)  
 North Reference: Grid  
 Survey Calculation Method: Minimum Curvature  
 Database: EDM 5000.1 Single User Db

Survey												
MD (usft)	Inc (°)	Azi (azimuth) (°)		TVD (usft)	N/S (usft)	E/W (usft)	DLeg (°/100usft)	Build (°/100usft)	Turn (°/100usft)	High to Plan (usft)	Right to Plan (usft)	
4,533.0	5.20	50.10	50.10	4,528.2	77.7	91.8	0.40	0.05	4.47	-41.3	-6.0	
4,720.0	5.40	55.30	55.30	4,714.4	88.1	105.5	0.28	0.11	2.78	-42.9	-4.4	
4,907.0	5.50	75.20	75.20	4,900.5	95.4	121.4	1.01	0.05	10.64	-44.9	5.3	
5,094.0	5.50	35.50	35.50	5,086.7	105.0	135.3	1.99	0.00	-21.23	-37.8	-27.5	
5,280.0	5.10	33.00	33.00	5,271.9	119.2	145.0	0.25	-0.22	-1.34	-37.9	-26.0	
5,468.0	5.30	32.60	32.60	5,459.2	133.5	154.2	0.11	0.11	-0.21	-38.7	-22.8	
5,657.0	5.10	35.20	35.20	5,647.4	147.7	163.8	0.16	-0.11	1.38	-40.6	-17.7	
5,845.0	5.10	34.20	34.20	5,834.6	161.5	173.3	0.05	0.00	-0.53	-40.9	-15.4	
6,032.0	4.90	32.60	32.60	6,020.9	175.1	182.3	0.13	-0.11	-0.86	-40.8	-13.2	
6,219.0	4.80	31.60	31.60	6,207.3	188.5	190.7	0.07	-0.05	-0.53	-40.6	-10.2	
6,406.0	4.80	44.40	44.40	6,393.6	200.7	200.2	0.57	0.00	6.84	-41.0	0.9	
6,593.0	5.10	49.50	49.50	6,579.9	211.7	212.0	0.28	0.16	2.73	-40.6	4.1	
6,781.0	4.80	49.00	49.00	6,767.2	222.3	224.3	0.16	-0.16	-0.27	-40.4	2.6	
6,968.0	5.80	43.40	43.40	6,953.4	234.3	236.7	0.60	0.53	-2.99	-41.4	-1.6	
7,156.0	5.90	45.30	45.30	7,140.4	248.0	250.1	0.12	0.05	1.01	-44.2	0.0	
7,343.0	4.70	35.10	35.10	7,326.6	261.0	261.4	0.81	-0.64	-5.45	-44.6	-6.6	
7,530.0	3.40	55.10	55.10	7,513.2	270.5	270.3	1.02	-0.70	10.70	-41.3	8.9	
7,717.0	2.90	44.30	44.30	7,699.9	277.0	278.2	0.41	-0.27	-5.78	-41.5	0.2	
7,904.0	2.60	40.80	40.80	7,886.7	283.6	284.2	0.18	-0.16	-1.87	-45.4	-2.2	
8,092.0	2.30	40.80	40.80	8,074.5	289.7	289.5	0.16	-0.16	0.00	-50.1	-2.0	
8,279.0	1.90	41.70	41.70	8,261.4	294.8	294.0	0.21	-0.21	0.48	-53.7	-0.9	
8,468.0	1.20	71.50	71.50	8,450.3	297.8	298.0	0.55	-0.37	15.77	-48.8	26.0	
8,655.0	1.20	77.70	77.70	8,637.3	298.9	301.7	0.07	0.00	3.32	-46.9	29.6	
8,842.0	1.30	80.90	80.90	8,824.2	299.6	305.7	0.07	0.05	1.71	-46.6	30.4	
9,030.0	1.10	74.10	74.10	9,012.2	300.4	309.6	0.13	-0.11	-3.62	-50.9	22.8	
9,217.0	0.80	83.60	83.60	9,199.2	301.1	312.6	0.18	-0.16	5.08	-47.0	29.1	
9,404.0	0.50	72.80	72.80	9,386.1	301.5	314.7	0.17	-0.16	-5.78	-50.8	18.1	



EOG Resources, Inc.  
EOG PVA

Company: EOG Resources - Midland  
 Project: Lea County, NM (NAD 27 NME)  
 Site: Hound 30 Fed  
 Well: #704H  
 Wellbore: OH  
 Design: OH

Local Co-ordinate Reference: Well #704H  
 TVD Reference: KB = 25' @ 3348.0usft (H&P #647)  
 MD Reference: KB = 25' @ 3348.0usft (H&P #647)  
 North Reference: Grid  
 Survey Calculation Method: Minimum Curvature  
 Database: EDM 5000.1 Single User Db

MD (usft)	Inc (°)	Azi (azimuth) (°)	TVD (usft)	N/S (usft)	E/W (usft)	DLeg (°/100usft)	Build (°/100usft)	Turn (°/100usft)	High to Plan (usft)	Right to Plan (usft)
9,592.0	0.30	67.80	9,574.1	301.9	315.9	0.11	-0.11	-2.66	-50.5	12.3
9,780.0	0.70	71.70	9,762.1	302.4	317.5	0.21	0.21	2.07	-48.2	14.2
9,967.0	0.70	90.00	9,949.1	302.8	319.7	0.12	0.00	9.79	-41.2	26.7
10,154.0	1.50	249.20	10,136.1	301.9	318.5	1.16	0.43	85.13	43.7	-8.6
10,342.0	2.20	252.90	10,324.0	300.0	312.8	0.38	0.37	1.97	34.0	-9.7
10,531.0	2.40	267.60	10,512.8	298.8	305.4	0.33	0.11	7.78	20.6	-14.9
10,719.0	3.30	249.50	10,700.6	296.7	296.4	0.67	0.48	-9.63	12.0	-7.7
10,907.0	0.70	226.80	10,888.5	294.0	290.5	1.42	-1.38	-12.07	4.6	-4.4
11,093.0	1.00	236.70	11,074.5	292.4	288.3	0.18	0.16	5.32	-2.1	-4.3
11,282.0	3.20	240.50	11,263.3	288.8	282.3	1.17	1.16	2.01	-12.5	-3.2
11,470.0	1.10	268.30	11,451.2	286.2	275.9	1.22	-1.12	14.79	-21.4	7.7
11,657.0	2.50	239.10	11,638.1	284.1	270.6	0.87	0.75	-15.61	-31.2	-3.8
11,831.0	1.90	224.20	11,812.0	280.0	265.4	0.47	-0.34	-8.56	-38.8	-12.8
11,948.0	1.90	205.10	11,928.9	276.9	263.2	0.54	0.00	-16.32	-38.1	-26.1
12,042.0	1.90	202.00	12,022.9	274.0	262.0	0.11	0.00	-3.30	-39.6	-29.6
12,136.0	6.30	159.30	12,116.6	267.8	263.2	5.39	4.68	-45.43	-1.3	-45.7
12,183.0	11.90	149.70	12,163.0	261.2	266.6	12.30	11.91	-20.43	10.3	-39.7
12,230.0	16.80	149.80	12,208.5	251.1	272.4	10.43	10.43	0.21	13.3	-32.0
12,277.0	21.80	156.80	12,252.9	237.2	279.3	11.70	10.64	14.89	12.9	-25.3
12,324.0	28.20	162.20	12,295.4	218.6	286.1	14.44	13.62	11.49	13.6	-19.1
12,370.0	34.20	168.70	12,334.8	195.5	292.0	14.94	13.04	14.13	13.9	-14.8
12,417.0	40.20	176.10	12,372.2	167.4	295.6	15.91	12.77	15.74	13.9	-13.2
12,464.0	47.00	177.10	12,406.2	135.1	297.5	14.54	14.47	2.13	13.8	-12.2
12,511.0	51.80	177.00	12,436.8	99.4	299.4	10.21	10.21	-0.21	12.9	-11.0
12,557.0	56.20	175.90	12,463.9	62.3	301.7	9.76	9.57	-2.39	12.1	-9.3
12,594.9	58.13	176.79	12,484.4	30.5	303.7	5.47	5.10	2.35	11.8	-7.9

HL Crossing 12594.9' MD; 12484.4' TVD; 30.5'; 303.7'; 58.13



EOG Resources, Inc.  
EOG PVA

Company: EOG Resources - Midland  
 Project: Lea County, NM (NAD 27 NME)  
 Site: Hound 30 Fed  
 Well: #704H  
 Wellbore: OH  
 Design: OH

Local Co-ordinate Reference: Well #704H  
 TVD Reference: KB = 25' @ 3348.0usft (H&P #647)  
 MD Reference: KB = 25' @ 3348.0usft (H&P #647)  
 North Reference: Grid  
 Survey Calculation Method: Minimum Curvature  
 Database: EDM 5000.1 Single User Db

Survey										
MD (usft)	Inc (°)	Azi (azimuth) (°)	TVD (usft)	N/S (usft)	E/W (usft)	DLeg (°/100usft)	Build (°/100usft)	Turn (°/100usft)	High to Plan (usft)	Right to Plan (usft)
12,604.0	58.60	177.00	12,489.2	22.8	304.1	5.47	5.11	2.29	11.9	-7.6
12,632.1	59.21	177.74	12,503.7	-1.3	305.2	3.12	2.17	2.62	13.0	-6.9
<b>FTP (Hound 30 Fed #704H)</b>										
12,650.0	59.60	178.20	12,512.8	-16.6	305.8	3.12	2.18	2.59	14.2	-6.6
12,697.0	64.80	179.90	12,534.7	-58.2	306.4	11.52	11.06	3.62	17.6	-6.7
12,744.0	68.50	180.70	12,553.3	-101.3	306.2	8.03	7.87	1.70	21.2	-7.5
12,791.0	71.60	179.90	12,569.4	-145.5	306.0	6.79	6.60	-1.70	25.7	-8.1
12,837.0	75.20	178.90	12,582.5	-189.6	306.4	8.10	7.83	-2.17	31.0	-8.0
12,884.0	80.20	178.10	12,592.5	-235.5	307.6	10.77	10.64	-1.70	36.5	-7.2
12,931.0	82.20	178.20	12,599.7	-281.9	309.1	4.26	4.26	0.21	42.4	-6.1
12,978.0	88.40	177.70	12,603.6	-328.7	310.8	13.23	13.19	-1.06	45.5	-4.7
13,018.0	89.50	177.80	12,604.3	-368.6	312.4	2.76	2.75	0.25	45.6	-3.5
13,111.0	88.40	176.60	12,606.0	-461.5	316.9	1.75	-1.18	-1.29	45.9	0.3
13,204.0	89.80	177.00	12,607.5	-554.4	322.1	1.57	1.51	0.43	45.9	4.8
13,299.0	89.90	178.10	12,607.7	-649.3	326.2	1.16	0.11	1.16	44.7	8.1
13,393.0	87.60	176.50	12,609.8	-743.1	330.6	2.98	-2.45	-1.70	45.3	11.8
13,486.0	89.20	177.60	12,612.4	-836.0	335.4	2.09	1.72	1.18	46.4	15.9
13,580.0	93.60	179.50	12,610.1	-929.9	337.8	5.10	4.68	2.02	42.7	17.6
13,674.0	93.80	179.00	12,604.0	-1,023.7	339.0	0.57	0.21	-0.53	35.1	18.1
13,768.0	92.50	180.70	12,598.8	-1,117.5	339.2	2.27	-1.38	1.81	28.5	17.6
13,861.0	89.10	181.10	12,597.5	-1,210.5	337.8	3.68	-3.66	0.43	25.8	15.4
13,955.0	88.00	180.30	12,599.9	-1,304.5	336.6	1.45	-1.17	-0.85	26.7	13.5
14,048.0	88.70	182.00	12,602.6	-1,397.4	334.8	1.98	0.75	1.83	28.0	10.9
14,135.5	87.41	181.17	12,605.6	-1,484.8	332.4	1.75	-1.47	-0.95	29.6	7.8
<b>TGT#1 (Hound 30 Fed #704H)</b>										
14,143.0	87.30	181.10	12,605.9	-1,492.3	332.2	1.75	-1.47	-0.95	29.8	7.6
14,237.0	88.00	180.70	12,609.8	-1,586.2	330.7	0.86	0.74	-0.43	32.5	5.4



EOG Resources, Inc.  
EOG PVA

Company: EOG Resources - Midland  
 Project: Lea County, NM (NAD 27 NME)  
 Site: Hound 30 Fed  
 Well: #704H  
 Wellbore: OH  
 Design: OH

Local Co-ordinate Reference: Well #704H  
 TVD Reference: KB = 25' @ 3348.0usft (H&P #647)  
 MD Reference: KB = 25' @ 3348.0usft (H&P #647)  
 North Reference: Grid  
 Survey Calculation Method: Minimum Curvature  
 Database: EDM 5000.1 Single User Db

Survey												
MD (usft)	Inc (°)	Azi (azimuth) (°)		TVD (usft)	N/S (usft)	E/W (usft)	DLeg (°/100usft)	Build (°/100usft)	Turn (°/100usft)	High to Plan (usft)	Right to Plan (usft)	
14,331.0	88.20	181.70	181.70	12,612.9	-1,680.1	328.8	1.08	0.21	1.06	34.5	2.7	
14,424.0	90.50	182.90	182.90	12,613.9	-1,773.0	325.0	2.79	2.47	1.29	34.5	-1.7	
14,519.0	93.40	184.00	184.00	12,610.7	-1,867.8	319.3	3.26	3.05	1.16	30.1	-8.1	
14,613.0	91.70	183.30	183.30	12,606.5	-1,961.5	313.3	1.96	-1.81	-0.74	24.8	-14.8	
14,706.0	89.70	181.60	181.60	12,605.4	-2,054.4	309.4	2.82	-2.15	-1.83	22.5	-19.5	
14,799.0	90.50	181.90	181.90	12,605.2	-2,147.4	306.5	0.92	0.86	0.32	21.3	-23.0	
14,893.0	89.80	182.40	182.40	12,605.0	-2,241.3	303.0	0.92	-0.74	0.53	19.9	-27.3	
14,987.0	88.10	179.40	179.40	12,606.7	-2,335.3	301.5	3.67	-1.81	-3.19	20.5	-29.5	
15,081.0	88.10	177.60	177.60	12,609.8	-2,429.2	304.0	1.91	0.00	-1.91	22.5	-27.7	
15,175.0	91.60	179.60	179.60	12,610.1	-2,523.1	306.3	4.29	3.72	2.13	21.6	-26.2	
15,268.0	90.20	179.30	179.30	12,608.6	-2,616.1	307.2	1.54	-1.51	-0.32	19.0	-26.0	
15,362.0	91.70	179.50	179.50	12,607.0	-2,710.1	308.2	1.61	1.60	0.21	16.3	-25.7	
15,456.0	89.70	178.20	178.20	12,605.9	-2,804.1	310.0	2.54	-2.13	-1.38	14.1	-24.5	
15,550.0	89.10	179.00	179.00	12,606.9	-2,898.0	312.3	1.06	-0.64	0.85	13.9	-22.9	
15,638.7	86.91	179.19	179.19	12,610.0	-2,986.7	313.7	2.48	-2.47	0.22	16.0	-22.2	
<b>TGT#2 (Hound 30 Fed #704H)</b>												
15,643.0	86.80	179.20	179.20	12,610.2	-2,990.9	313.8	2.48	-2.47	0.22	16.1	-22.2	
15,737.0	88.90	179.40	179.40	12,613.7	-3,084.9	314.9	2.24	2.23	0.21	18.5	-21.8	
15,831.0	89.70	179.10	179.10	12,614.9	-3,178.9	316.2	0.91	0.85	-0.32	18.4	-21.2	
15,924.0	90.10	181.10	181.10	12,615.0	-3,271.8	316.0	2.19	0.43	2.15	17.4	-22.1	
16,018.0	91.10	179.00	179.00	12,614.0	-3,365.8	315.9	2.47	1.06	-2.23	15.2	-22.9	
16,111.0	89.70	179.30	179.30	12,613.4	-3,458.8	317.3	1.54	-1.51	0.32	13.4	-22.2	
16,205.0	90.40	178.80	178.80	12,613.3	-3,552.8	318.9	0.92	0.74	-0.53	12.2	-21.4	
16,300.0	87.50	176.40	176.40	12,615.1	-3,647.7	322.8	3.96	-3.05	-2.53	12.7	-18.1	
16,393.0	88.90	178.20	178.20	12,618.0	-3,740.5	327.2	2.45	1.51	1.94	14.4	-14.5	
16,487.0	88.10	177.50	177.50	12,620.4	-3,834.4	330.7	1.13	-0.85	-0.74	15.7	-11.6	
16,580.0	88.90	178.60	178.60	12,622.9	-3,927.3	333.9	1.46	0.86	1.18	17.0	-9.2	





EOG Resources, Inc.  
EOG PVA

Company: EOG Resources - Midland  
Project: Lea County, NM (NAD 27 NME)  
Site: Hound 30 Fed  
Well: #704H  
Wellbore: OH  
Design: OH

Local Co-ordinate Reference: Well #704H  
TVD Reference: KB = 25' @ 3348.0usft (H&P #647)  
MD Reference: KB = 25' @ 3348.0usft (H&P #647)  
North Reference: Grid  
Survey Calculation Method: Minimum Curvature  
Database: EDM 5000.1 Single User Db

Survey											
MD (usft)	Inc (°)	Azi (azimuth) (°)		TVD (usft)	N/S (usft)	E/W (usft)	DLeg (°/100usft)	Build (°/100usft)	Turn (°/100usft)	High to Plan (usft)	Right to Plan (usft)
16,674.0	90.40	178.50		12,623.4	-4,021.3	336.3	1.60	1.60	-0.11	16.4	-7.5
16,768.0	92.10	178.20		12,621.4	-4,115.2	339.0	1.84	1.81	-0.32	13.1	-5.6
16,862.0	91.40	178.00		12,618.5	-4,209.1	342.1	0.77	-0.74	-0.21	9.1	-3.1
16,956.0	92.60	179.40		12,615.2	-4,303.1	344.2	1.96	1.28	1.49	4.6	-1.7
17,050.0	86.80	183.00		12,615.7	-4,397.0	342.3	7.26	-6.17	3.83	3.9	-4.4
17,140.6	87.76	182.81		12,620.0	-4,487.4	337.7	1.08	1.06	-0.21	7.0	-9.7
<b>TGT#3 (Hound 30 Fed #704H)</b>											
17,144.0	87.80	182.80		12,620.2	-4,490.8	337.5	1.08	1.06	-0.21	7.1	-9.9
17,237.0	89.10	182.30		12,622.7	-4,583.6	333.4	1.50	1.40	-0.54	8.5	-14.7
17,332.0	88.80	181.80		12,624.4	-4,678.6	330.0	0.61	-0.32	-0.53	9.1	-18.8
17,425.0	89.10	180.70		12,626.1	-4,771.5	328.0	1.23	0.32	-1.18	9.7	-21.6
17,519.0	90.90	180.50		12,626.1	-4,865.5	327.0	1.93	1.91	-0.21	8.6	-23.3
17,613.0	89.10	179.80		12,626.1	-4,959.5	326.7	2.05	-1.91	-0.74	7.5	-24.2
17,707.0	89.70	179.20		12,627.1	-5,053.5	327.6	0.90	0.64	-0.64	7.3	-24.1
17,801.0	88.70	178.60		12,628.4	-5,147.5	329.4	1.24	-1.06	-0.64	7.5	-23.0
17,895.0	87.30	178.00		12,631.7	-5,241.4	332.1	1.62	-1.49	-0.64	9.7	-21.0
17,989.0	88.80	178.90		12,634.9	-5,335.3	334.7	1.86	1.60	0.96	11.8	-19.1
18,082.0	89.70	177.90		12,636.1	-5,428.2	337.3	1.45	0.97	-1.08	11.9	-17.3
18,175.0	89.90	177.60		12,636.4	-5,521.2	340.9	0.39	0.22	-0.32	11.1	-14.3
18,269.0	90.70	178.40		12,636.0	-5,615.1	344.2	1.20	0.85	0.85	9.4	-11.7
18,363.0	90.50	178.40		12,635.0	-5,709.1	346.8	0.21	-0.21	0.00	7.3	-9.8
18,457.0	89.60	178.20		12,634.9	-5,803.0	349.6	0.98	-0.96	-0.21	6.1	-7.8
18,551.0	88.60	178.70		12,636.4	-5,897.0	352.2	1.19	-1.06	0.53	6.5	-5.9
18,643.5	89.39	179.29		12,638.0	-5,989.5	353.8	1.06	0.85	0.64	7.0	-5.0
<b>TGT#4 (Hound 30 Fed #704H)</b>											
18,645.0	89.40	179.30		12,638.0	-5,990.9	353.8	1.06	0.85	0.64	7.0	-5.0
18,739.0	89.30	178.90		12,639.1	-6,084.9	355.3	0.44	-0.11	-0.43	6.8	-4.3



EOG Resources, Inc.  
EOG PVA

Company: EOG Resources - Midland  
 Project: Lea County, NM (NAD 27 NME)  
 Site: Hound 30 Fed  
 Well: #704H  
 Wellbore: OH  
 Design: OH

Local Co-ordinate Reference: Well #704H  
 TVD Reference: KB = 25' @ 3348.0usft (H&P #647)  
 MD Reference: KB = 25' @ 3348.0usft (H&P #647)  
 North Reference: Grid  
 Survey Calculation Method: Minimum Curvature  
 Database: EDM 5000.1 Single User Db

MD (usft)	Inc (°)	Azi (azimuth) (°)	TVD (usft)	N/S (usft)	E/W (usft)	DLeg (°/100usft)	Build (°/100usft)	Turn (°/100usft)	High to Plan (usft)	Right to Plan (usft)
18,833.0	91.30	180.90	12,638.6	-6,178.9	355.4	3.01	2.13	2.13	5.0	-4.8
18,926.0	91.90	180.40	12,636.0	-6,271.9	354.4	0.84	0.65	-0.54	1.1	-6.6
19,020.0	88.40	181.10	12,635.7	-6,365.8	353.2	3.80	-3.72	0.74	-0.4	-8.6
19,114.0	87.70	180.30	12,638.9	-6,459.8	352.0	1.13	-0.74	-0.85	1.5	-10.4
19,208.0	89.20	179.20	12,641.5	-6,553.7	352.4	1.98	1.60	-1.17	2.7	-10.7
19,302.0	89.20	177.30	12,642.8	-6,647.7	355.3	2.02	0.00	-2.02	2.8	-8.6
19,396.0	90.50	178.30	12,643.0	-6,741.6	358.9	1.74	1.38	1.06	1.7	-5.7
19,490.0	89.40	176.70	12,643.1	-6,835.5	363.0	2.07	-1.17	-1.70	0.5	-2.3
19,583.0	90.70	178.80	12,643.0	-6,928.4	366.7	2.66	1.40	2.26	-0.8	0.6
19,677.0	88.30	176.70	12,643.9	-7,022.3	370.3	3.39	-2.55	-2.23	-1.3	3.5
19,770.0	86.40	175.30	12,648.2	-7,115.0	376.8	2.54	-2.04	-1.51	1.7	9.3
19,802.0	86.30	175.00	12,650.2	-7,146.8	379.5	0.99	-0.31	-0.94	3.3	11.8
Last MWD Survey										
19,862.0	86.30	175.00	12,654.1	-7,206.5	384.7	0.00	0.00	0.00	6.3	16.5
Projection to Bit - PBHL (Hound 30 Fed #704H)										

Measured Depth (usft)	Vertical Depth (usft)	Local Coordinates		Comment
		+N-S (usft)	+E-W (usft)	
3,641.7	3,639.7	29.1	42.8	HL Crossing 3641.7' MD; 3639.7' TVD; 29.1'; 42.8'; 2.73
12,594.9	12,484.4	30.5	303.7	HL Crossing 12594.9' MD; 12484.4' TVD; 30.5'; 303.7'; 58.13
19,802.0	12,650.2	-7,146.8	379.5	Last MWD Survey
19,862.0	12,654.1	-7,206.5	384.7	Projection to Bit

Checked By: \_\_\_\_\_ Approved By: \_\_\_\_\_ Date: \_\_\_\_\_