

Submit 1 Copy To Appropriate District Office  
 District I - (575) 393-6161  
 1625 N. French Dr., Hobbs, NM 88240  
 District II - (575) 748-1283  
 811 S. First St., Artesia, NM 88210  
 District III - (505) 334-6178  
 1000 Rio Brazos Rd., Aztec, NM 87410  
 District IV - (505) 476-3460  
 1220 S. St. Francis Dr., Santa Fe, NM 87505

State of New Mexico  
 Energy, Minerals and Natural Resources

OIL CONSERVATION DIVISION  
 1220 South St. Francis Dr.  
 Santa Fe, NM 87505

Form C-103  
 Revised July 18, 2013

SUNDRY NOTICES AND REPORTS ON WELL (DO NOT USE THIS FORM FOR PROPOSALS TO DRILL OR TO DEEPEN OR PLUG BACK TO A DIFFERENT RESERVOIR. USE "APPLICATION FOR PERMIT" (FORM C-101) FOR SUCH PROPOSALS.)		WELL API NO. 30-025-24312
1. Type of Well: Oil Well <input type="checkbox"/> Gas Well <input type="checkbox"/> Other <u>INJECTOR</u>		5. Indicate Type of Lease STATE <input checked="" type="checkbox"/> FEE <input type="checkbox"/>
2. Name of Operator CHEVRON U.S.A. INC.		6. State Oil & Gas Lease No.
3. Address of Operator 6301 DEAUVILLE BLVD, MIDLAND, TX 79706		7. Lease Name or Unit Agreement Name VACUUM GRAYBURG SAN ANDRES UNIT
4. Well Location Unit Letter <u>J</u> : <u>2630</u> feet from the <u>SOUTH</u> line and <u>2630</u> feet from the <u>EAST</u> line Section <u>I</u> Township <u>18-S</u> Range <u>34-E</u> NMPM County <u>LEA</u>		8. Well Number <u>34</u>
11. Elevation (Show whether DR, RKB, RT, GR, etc.) 4,011' (GL)		9. OGRID Number <u>4323</u>
10. Pool name or Wildcat VACUUM GRAYBURG SAN ANDRES		

12. Check Appropriate Box to Indicate Nature of Notice, Report or Other Data

NOTICE OF INTENTION TO:		SUBSEQUENT F	
PERFORM REMEDIAL WORK <input type="checkbox"/>	PLUG AND ABANDON <input checked="" type="checkbox"/>	REMEDIAL WORK <input type="checkbox"/>	INT TO PA <u>Am</u> <input checked="" type="checkbox"/> P&A NR _____ P&A R _____
TEMPORARILY ABANDON <input type="checkbox"/>	CHANGE PLANS <input type="checkbox"/>	COMMENCE DRILLING OPNS. <input type="checkbox"/>	
PULL OR ALTER CASING <input type="checkbox"/>	MULTIPLE COMPL <input type="checkbox"/>	CASING/CEMENT JOB <input type="checkbox"/>	
DOWNHOLE COMMINGLE <input type="checkbox"/>			
CLOSED-LOOP SYSTEM <input type="checkbox"/>	REPLACE PACKER <input type="checkbox"/>	OTHER:	

13. Describe proposed or completed operations. (Clearly state all pertinent details, and give pertinent dates, including estimated date of starting any proposed work). SEE RULE 19.15.7.14 NMAC. For Multiple Completions: Attach wellbore diagram of proposed completion or recompletion.

Notice of intent to move to P&A after redbeds were encountered during attempted repair. Planned procedure is as follows.

- TIH with 5-1/2" packer and set at ~4163' (as deep as we were able to get)
- R/U wireline, RIH jet cutter and cut tubing 30' above packer at 4133'
- R/U cementers and pump a minimum of 25 sx (5.5 bbls) Class C cement and spot balanced cement plug from 4133'-3900' Pull up to 3900' and reverse circulate clean. Pull up to 3500' and WOC. TIH and tag with 10K to confirm TOC.
- Pull up to 2700' and pump 25 sx of Class C cement and spot balanced cement plug from 2700'-2468'. Pull up to 2300' and reverse circulate clean. Pull up to 2000' and WOC. TIH and tag with 10K to confirm TOC.
- Pull up to 1525'. R/U wireline, RIH and perforate 5-1/2" casing at 1550'
- Drop to 1668', Establish circulation through casing annulus, mix and pump 25+ sx of Class C cement.
- Pull up to 920' and set 25 sx balanced plug from 920'-720'. Pull up to 650' and reverse circulate clean. WOC. TIH and tag with 10K to confirm TOC.
- TOH
- R/U wireline. RIH and perforate 5-1/2" casing at 400'. POOH and R/D wireline.
- Establish circulation and pump cement down 5-1/2" casing to surface through annulus.
  - Once clean cement is observed at surface, shut in casing valve and pressure up to 500 psi
  - Shut in and hold 500 psi
  - Clean surface lines and R/D cements
  - WOC
- N/D and install B1 blanking flange with pressure gauge

Spud Date:


Rig Release Date:

I hereby certify that the information above is true and complete to the best of my knowledge and belief.

SIGNATURE  TITLE Production Engineer DATE 8/24/17

Type or print name Michael Stewart E-mail address: michael.stewart@chevron.com PHONE: 432-687-7431

**For State Use Only**

APPROVED BY:  TITLE P.E.S. DATE 08/29/2017  
Conditions of Approval (if any):

# VGSAU 34

API # 30-025-24312

Proposed P&A WBD

2630' FSL & 2630' FEL  
SEC 1, TWN 18-S, Range 34-E, County Lea  
ELEVATION: 4001' GL, 4011' KB  
Completed: 1/15/73 Spud: 12/5/1972

Injection Well

## Surface Casing:

12 1/4" hole  
8 5/8" csg - 20#  
set @ 352'. Cemented w/ 210 sx class "C"  
cmt w/ 2% CaCl. Cement to surface.  
(12/8/1972)

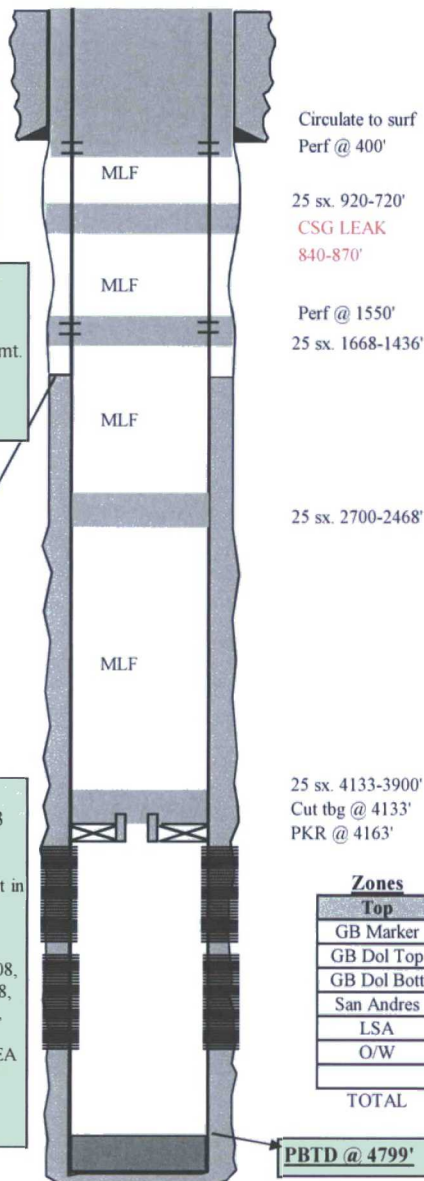
## Production Casing:

7-7/8" hole  
5-1/2" csg - 14#  
set @ 4800' Cemented w/ 550 sx class "C" cmt.  
(12/29/1972)

TOC @ 2400

## Perforations:

**Re-perforate 4400'-4340' (60'):** 4 jspf w/ 3  
1/8". (11/21/2003)  
**4242'-4312':** 1 jspf, 71'.  
acid w/ 8000 gals 15% NEFE and 4000 # rocksalt in  
3 stages.  
Pmax= 2200psi, Pmin: 1400 psi, AIR: 4 bpm,  
ISIP=1700 psi (3/10/86)  
**4334'-4792':** 4334, 40, 50, 58, 68, 78, 88, 99, 4408,  
18, 32, 44, 83, 94, 4505, 10, 18, 27, 32, 50, 64, 88,  
4600, 11, 64, 77, 96, 4744, 47, 52, 55, 83, 84, 88,  
4792.  
2 JSPF, 35', 70 holes. Acid w/ 9000 gals 20% NEA  
in 3 stages and ball sealers (1/15/73)



## Brief Workover History:

**7/2/74: Frac & Acid:** Frac 4334'-4611' w/ 1500# sand and 500 gals 15% NEA acid. Acidized f/ 4334'-4792' w/ 4,000 gals 15% NEA.  
**5/26/83:** Convert to Injection & acid perfs 4334'-4792' w/ 750 gals 15% NEFE.  
**3/10/86: Add perfs:** Perforate 4242'-4312' (71'). Acidize perfs w/ 8,000 gals 15% NEFE. P=1400-2200 psi, AIR=4 bpm, ISIP=1700 psi.  
**5/24/91:** Permission to increase pressure to 1140 psi  
**10/6/93:** Step Rate.  
**11/10/93:** Permission to bump pressure to 1395 psi.  
**4/30/96 to 5/3/96:** Tagged @ 4180'. C/O to 4799'. Set Pkr at 4132'. Acid perfs f/ 4242' to 4792' w/ 7100 gals 15% NEFE HCl + 3500# rock salt. Pmax= 4000 psi, Average rate= 4 bpm, ISIP=1000 psi. Run 133 Joints 2 3/8" IPC injection tubing. Set packer @ 4077'. Chart.  
**5/1/03: Attempt to do Injection Profile:** Run Sinker bars (1 3/8" on april 29th and 1" tools on may 1st) and tagged @ 4127'. Had to jar and work wireline to free tools. TOH.  
**11/12 - 11/21/03: Acid Job / Reperforate:** Tag @ 4435' (364' fill). C/O to 4799' (PBT). Perforate interval f/ 4400' to 4340' (60') 4 jspf w/ 3 1/8" expandable guns. Acid from 4242' to 4792' w/ 8,000 gals 15% HCl and 4500 # rock salt in 3 stages. First block increased f/ 2200 to 2700 psi. Second block saw no increase. Pmax= 2801 psi, Pave=2408 psi, AIR=8.5 bpm, ISIP=1405 psi. Tag no salt. Set packer at 4077'.

## Zones

Top	Depth	Interval
GB Marker	4,079	
GB Dol Top	4,175	40
GB Dol Bott	4,215	23
San Andres	4,238	236
LSA	4,474	234
O/W	4,708	
TOTAL		533

## COMMENTS AND RECOMMENDATIONS: