

UNITED STATES
DEPARTMENT OF THE INTERIOR
BUREAU OF LAND MANAGEMENT

OCD Hobbs

FORM APPROVED
OMB NO. 1004-0137
Expires: January 31, 2018**SUNDRY NOTICES AND REPORTS ON WELLS**
*Do not use this form for proposals to drill or to re-enter an abandoned well. Use form 3160-3 (APD) for such proposals.*5. Lease Serial No.
NMNM27506

6. If Indian, Allottee or Tribe Name

7. If Unit or CA/Agreement, Name and/or No.

8. Well Name and No.
SD EA 29 FED COM P8 11H /9. API Well No.
30-025-43270-00-X110. Field and Pool or Exploratory Area
WC025G06S263319P-BONE SPRING11. County or Parish, State
LEA COUNTY, NM**SUBMIT IN TRIPLICATE - Other instructions on page 2**

1. Type of Well

☒ Oil Well ☐ Gas Well ☐ Other2. Name of Operator
CHEVRON USA INCContact: DENISE PINKERTON
E-Mail: leakejd@chevron.com3a. Address
1616 W. BENDER BLVD
HOBBS, NM 882403b. Phone No. (include area code)
Ph: 432-687-73754. Location of Well (Footage, Sec., T., R., M., or Survey Description)
Sec 29 T26S R33E NWNE 136FNL 1632FEL /**12. CHECK THE APPROPRIATE BOX(ES) TO INDICATE NATURE OF NOTICE, REPORT, OR OTHER DATA**

TYPE OF SUBMISSION	TYPE OF ACTION			
<input checked="" type="checkbox"/> Notice of Intent	<input type="checkbox"/> Acidize	<input type="checkbox"/> Deepen	<input type="checkbox"/> Production (Start/Resume)	<input type="checkbox"/> Water Shut-Off
<input type="checkbox"/> Subsequent Report	<input type="checkbox"/> Alter Casing	<input type="checkbox"/> Hydraulic Fracturing	<input type="checkbox"/> Reclamation	<input type="checkbox"/> Well Integrity
<input type="checkbox"/> Final Abandonment Notice	<input type="checkbox"/> Casing Repair	<input type="checkbox"/> New Construction	<input type="checkbox"/> Recomplete	<input checked="" type="checkbox"/> Other
	<input type="checkbox"/> Change Plans	<input type="checkbox"/> Plug and Abandon	<input type="checkbox"/> Temporarily Abandon	Change to Original A
	<input type="checkbox"/> Convert to Injection	<input type="checkbox"/> Plug Back	<input type="checkbox"/> Water Disposal	PD

13. Describe Proposed or Completed Operation: Clearly state all pertinent details, including estimated starting date of any proposed work and approximate duration thereof. If the proposal is to deepen directionally or recompleat horizontally, give subsurface locations and measured and true vertical depths of all pertinent markers and zones. Attach the Bond under which the work will be performed or provide the Bond No. on file with BLM/BIA. Required subsequent reports must be filed within 30 days following completion of the involved operations. If the operation results in a multiple completion or recompleat in a new interval, a Form 3160-4 must be filed once testing has been completed. Final Abandonment Notices must be filed only after all requirements, including reclamation, have been completed and the operator has determined that the site is ready for final inspection.

CHEVRON respectfully requests the ability to change the BOPE rating for the subject well, from a 5M system to a 10M system while drilling the production sections that penetrate the Wolfcamp formation. (All intermediate sections, which TD in the Bone Spring, will have the previously submitted 5M system setup).

*All equipment will be 5M as per the original submittal, but the annular will be 10M, as well as the necessary upgrades to the choke manifold. (Upgrade 2" choke lines to 3" with a third choke).

Please find attached, the 10M BOP choke schematic.

Any questions/concerns should be directed to Bryson Abney, Chevron Drilling Engineer, at 713-372-6447.

14. I hereby certify that the foregoing is true and correct.

**Electronic Submission #382367 verified by the BLM Well Information System
For CHEVRON USA INC, sent to the Hobbs****Committed to AFMSS for processing by PRISCILLA PEREZ on 08/12/2017 (17PP0582SE)**

Name (Printed/Typed) DENISE PINKERTON

Title PERMITTING SPECIALIST

Signature (Electronic Submission)

Date 07/25/2017

THIS SPACE FOR FEDERAL OR STATE OFFICE USEApproved By ZOTA STEVENS

Title PETROLEUM ENGINEER

Date 08/24/2017

Conditions of approval, if any, are attached. Approval of this notice does not warrant or certify that the applicant holds legal or equitable title to those rights in the subject lease which would entitle the applicant to conduct operations thereon.

Office Hobbs

Title 18 U.S.C. Section 1001 and Title 43 U.S.C. Section 1212, make it a crime for any person knowingly and willfully to make to any department or agency of the United States any false, fictitious or fraudulent statements or representations as to any matter within its jurisdiction.

(Instructions on page 2)

**** BLM REVISED ** BLM REVISED ** BLM REVISED ** BLM REVISED ** BLM REVISED ****

BLOWOUT PREVENTOR SCHEMATIC

Minimum Requirements

OPERATION : Wolfcamp A Wells

Minimum System
Pressure Rating : 10,000 psi

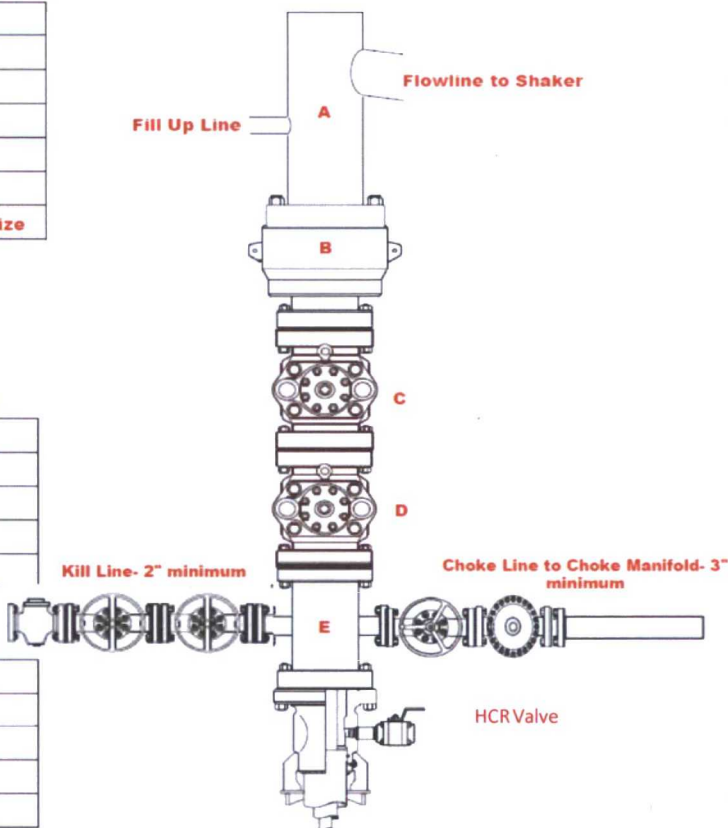
	SIZE	PRESSURE	DESCRIPTION
A		N/A	Bell Nipple
B	13 5/8"	10,000 psi	Annular
C	13 5/8"	10,000 psi	Pipe Ram
D	13 5/8"	10,000 psi	Blind Ram
E	13 5/8"	10,000 psi	Mud Cross
F			
DSA	As required for each hole size		

Kill Line

	SIZE	PRESSURE	DESCRIPTION
	2"	10,000 psi	Gate Valve
	2"	10,000 psi	Gate Valve
	2"	10,000 psi	Check Valve

Choke Line

	SIZE	PRESSURE	DESCRIPTION
	3"	10,000 psi	Gate Valve
	3"	10,000 psi	HCR Valve



Installation Checklist

The following item must be verified and checked off prior to pressure testing of BOP equipment.

- ☐ The installed BOP equipment meets at least the minimum requirements (rating, type, size, configuration) as shown on this schematic. Components may be substituted for equivalent equipment rated to higher pressures. Additional components may be put into place as long as they meet or exceed the minimum pressure rating of the system.
- ☐ All valves on the kill line and choke line will be full opening and will allow straight through flow.
- ☐ The kill line and choke line will be straight unless turns use tee blocks or are targeted with running tress, and will be anchored to prevent whip and reduce vibration.
- ☐ Manual (hand wheels) or automatic locking devices will be installed on all ram preventers. Hand wheels will also be installed on all manual valves on the choke line and kill line.
- ☐ A valve will be installed in the closing line as close as possible to the annular preventer to act as a locking device. This valve will remain open unless accumulator is inoperative.
- ☐ Upper kelly cock valve with handle will be available on rig floor along with safety valve and subs to fit all drill string connections in use.

After Installation Checklist is complete, fill out the information below and email to Superintendent and Drilling Engineer

Wellname: _____

Representative: _____

Date: _____

Diagram A

CHOKE MANIFOLD SCHEMATIC

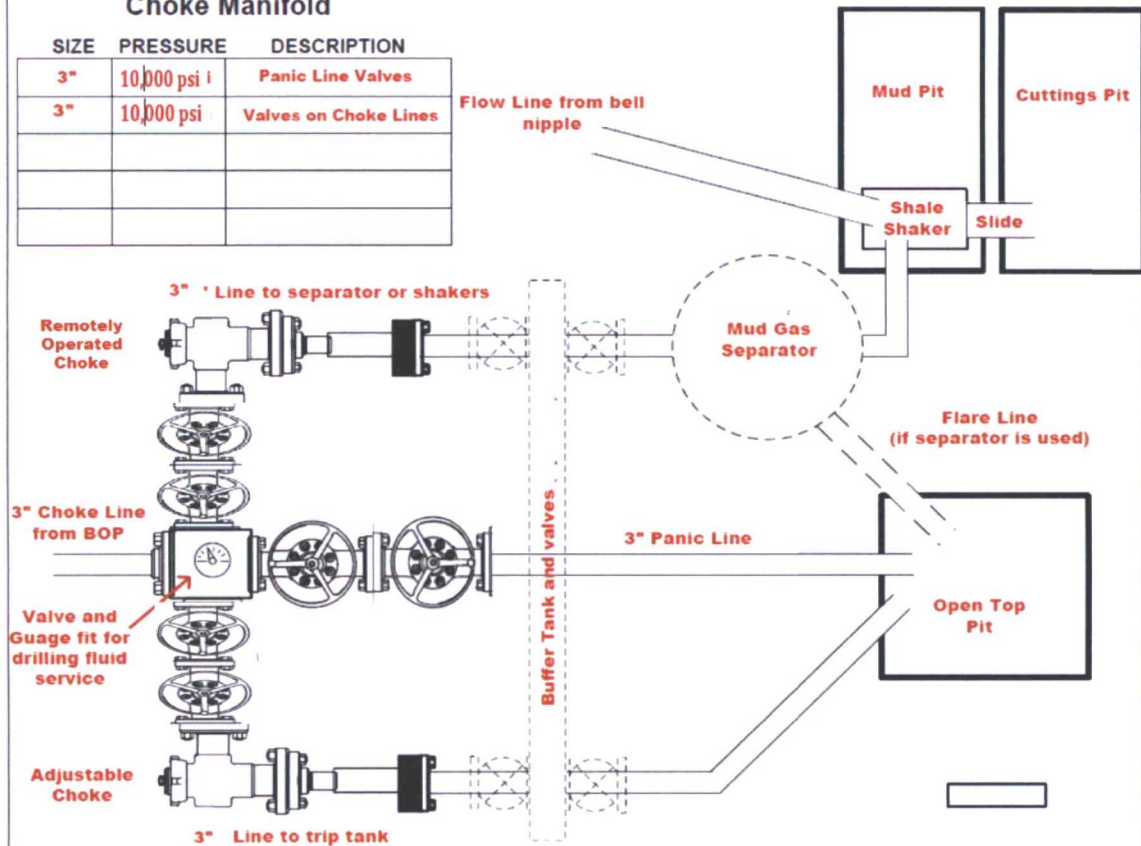
Minimum Requirements

OPERATION : Wolfcamp A wells

Minimum System
Pressure Rating : 10,000 psi

Choke Manifold

SIZE	PRESSURE	DESCRIPTION
3"	10,000 psi	Panic Line Valves
3"	10,000 psi	Valves on Choke Lines



Installation Checklist

The following item must be verified and checked off prior to pressure testing of BOP equipment.

- ☐ The installed BOP equipment meets at least the minimum requirements (rating, type, size, configuration) as shown on this schematic. Components may be substituted for equivalent equipment rated to higher pressures. Additional components may be put into place as long as they meet or exceed the minimum pressure rating of the system.
- ☐ Adjustable Chokes may be Remotely Operated but will have backup hand pump for hydraulic actuation in case of loss of rig air pressure or power.
- ☐ Flare and Panic lines will terminate a minimum of 150' from the wellhead. These lines will terminate at a location as per approved APD.
- ☐ The choke line, kill line, and choke manifold lines will be straight unless turns use tee blocks or are targeted with running tool, and will be anchored to prevent whip and reduce vibration. This excludes the line between mud gas separator and shale shaker.
- ☐ All valves (except chokes) on choke line, kill line, and choke manifold will be full opening and will allow straight through flow. This excludes any valves between mud gas separator and shale shakers.
- ☐ All manual valves will have hand wheels installed.
- ☐ If used, flare system will have effective method for ignition
- ☐ All connections will be flanged, welded, or clamped (no threaded connections like hammer unions)
- ☐ If buffer tank is used, a valve will be used on all lines at any entry or exit point to or from the buffer tank.

After Installation Checklist is complete, fill out the information below and email to Superintendent and Drilling Engineer

Wellname: _____

Representative: _____

Date: _____

Diagram B

10M BLOWOUT PREVENTER SCHEMATIC

Minimum Requirements

OPERATION: Wolfcamp Wells in Salado Draw

Minimum System Pressure Rating: **10,000 PSI**

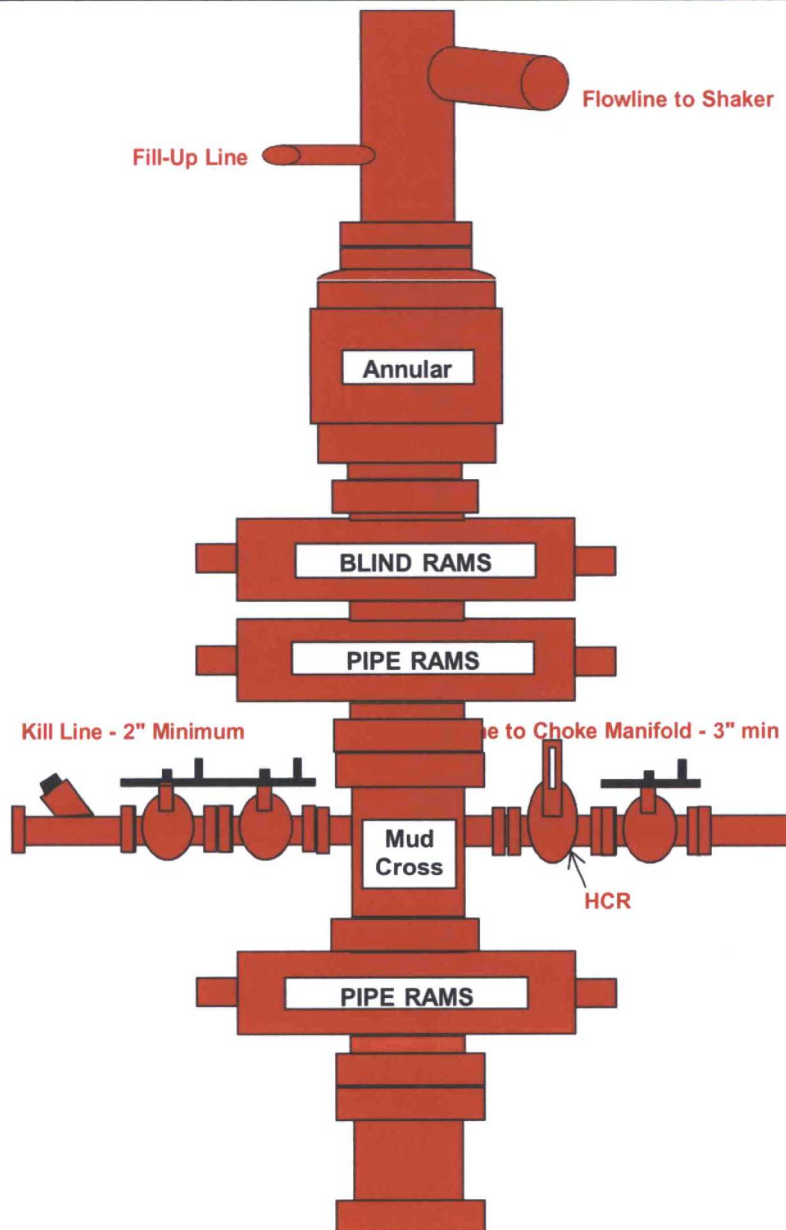


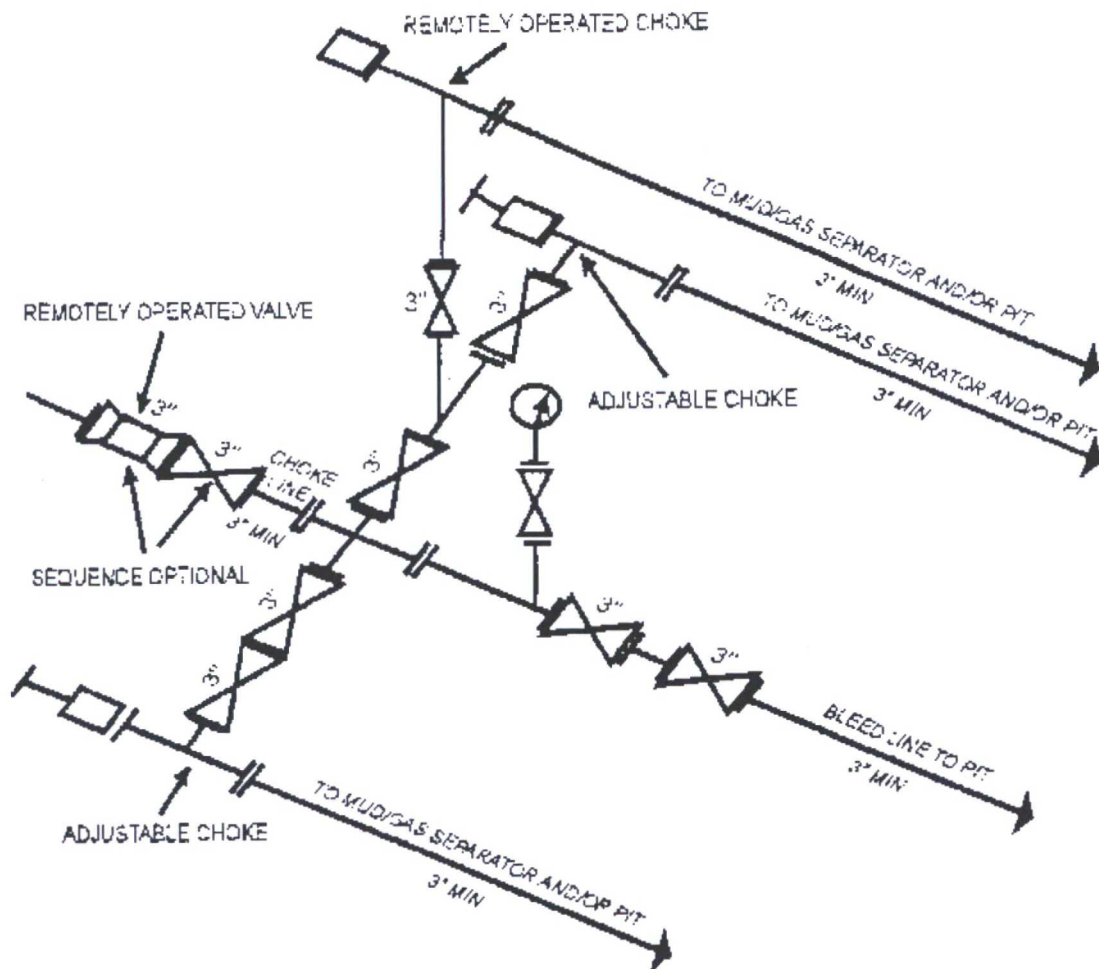
Diagram C

10M Choke Manifold SCHEMATIC

Minimum Requirements

OPERATION: Production and Open Hole Sections

Minimum System Pressure Rating: 10,000 PSI



10M AND 15M CHOKE MANIFOLD EQUIPMENT - CONFIGURATION OF CHOKES MAY VARY
[53 FR 49661, Dec. 9, 1988 and 54 FR 39528, Sept. 27, 1989]

Diagram D