

## WELL LOCATION AND ACREAGE DEDICATION PLAT

<sup>1</sup> API Number 30-025- <i>43893</i>	<sup>2</sup> Pool Code 96658	<sup>3</sup> Pool Name Hardin Tank; Wolfcamp
<sup>4</sup> Property Code <i>318329</i>	<sup>5</sup> Property Name RUBY 2 FED COM	<sup>6</sup> Well Number #703H
<sup>7</sup> OGRID No. 7377	<sup>8</sup> Operator Name EOG RESOURCES, INC.	<sup>9</sup> Elevation 3305'

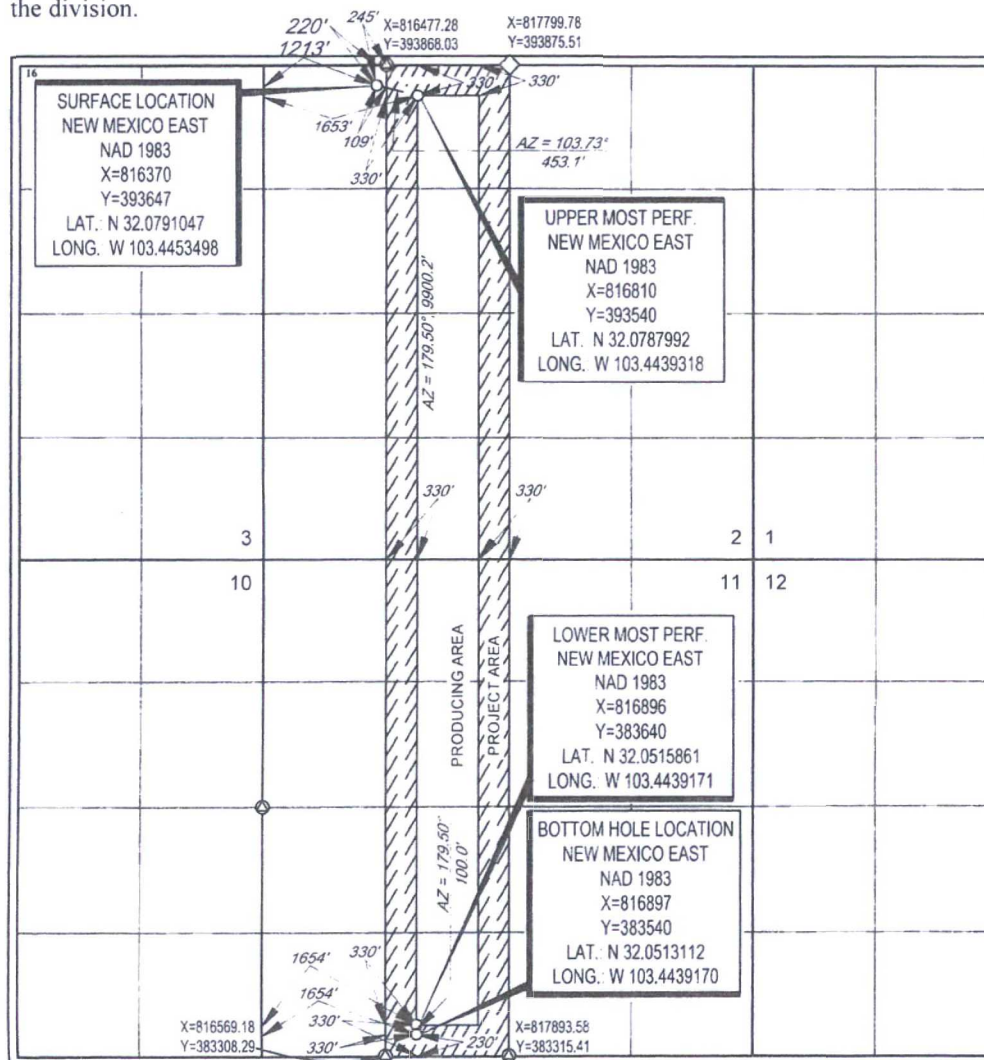
<sup>10</sup>Surface Location

UL or lot no.	Section	Township	Range	Lot Idn	Feet from the	North/South line	Feet from the	East/West line	County
D	2	26-S	34-E	-	220'	NORTH	1213'	WEST	LEA

UL or lot no.	Section	Township	Range	Lot Idn	Feet from the	North/South line	Feet from the	East/West line	County
N	11	26-S	34-E	-	230'	SOUTH	1654'	WEST	LEA

<sup>12</sup> Dedicated Acres 320.00	<sup>13</sup> Joint or Infill	<sup>14</sup> Consolidation Code	<sup>15</sup> Order No.
---	-------------------------------	----------------------------------	-------------------------

No allowable will be assigned to this completion until all interests have been consolidated or a non-standard unit has been approved by the division.



## <sup>17</sup>OPERATOR CERTIFICATION

I hereby certify that the information contained herein is true and complete to the best of my knowledge and belief, and that this organization either owns a working interest or unleased mineral interest in the land underlying the proposed bottom hole location or has a right to drill this well at this location pursuant to a contract with an owner of such a mineral or working interest or to a voluntary pooling agreement or a compulsory pooling order heretofore entered by the division.

Signature Stan Wagon Date 7/13/17

Stan Wagner

Printed Name \_\_\_\_\_

E-mail Address

## 18 SURVEYOR CERTIFICATION

I hereby certify that the well location shown on this plat was plotted from field notes of actual surveys made by me or under my supervision and that the same is true to the best of my belief.

12/09/2016  
Date of Survey  
Signature and Seal of Professional Surveyor

Date of Survey \_\_\_\_\_  
Signature and Seal of Professional Surveyor \_\_\_\_\_

Signature and Seal of Professional Surveyor

NO

F 18329

10

\_\_\_\_\_

~~SECRET~~

~~PERSONAL SUP~~

*[Signature]*

Certificate Number