



EOG Resources, Inc.
Planning Report

Database: EDM 5000.14 Single User Db
 Company: EOG Resources - Midland
 Project: Lea County, NM (NAD 83 NME)
 Site: Ruby 2 Fed Com
 Well: #703H
 Wellbore: OH
 Design: Plan #0.2

Local Co-ordinate Reference: Well #703H
 TVD Reference: KB = 25' @ 3330.0usft
 MD Reference: KB = 25' @ 3330.0usft
 North Reference: Grid
 Survey Calculation Method: Minimum Curvature

Project	Lea County, NM (NAD 83 NME)		
Map System:	US State Plane 1983	System Datum:	Mean Sea Level
Geo Datum:	North American Datum 1983		
Map Zone:	New Mexico Eastern Zone		

Site: Ruby 2 Fed Com

Site Position: Northing: 393,589.99 usft Latitude: 32° 4' 47.315 N
 From: Map Easting: 775,148.00 usft Longitude: 103° 34' 42.355 W
 Position Uncertainty: 0.0 usft Slot Radius: 13-3/16" Grid Convergence: 0.40"

Well: #703H

Well Position: +N/-S 57.0 usft Northing: 393,647.00 usft Latitude: 32° 4' 44.773 N
 +E/-W 41,222.0 usft Easting: 816,370.00 usft Longitude: 103° 26' 43.260 W
 Position Uncertainty: 0.0 usft Wellhead Elevation: 0.0 usft Ground Level: 3,305.0 usft

Wellbore: OH

Magnetics	Model Name	Sample Date	Declination (°)	Dip Angle (°)	Field Strength (nT)
	IGRF2015	1/23/2017	6.93	59.95	47,906.91007229

Design: Plan #0.2

Audit Notes:

Version: Phase: PLAN Tie On Depth: 0.0

Vertical Section: Depth From (TVD) (usft) +N/-S (usft) +E/-W (usft) Direction (°)
 0.0 0.0 0.0 177.02

Plan Survey Tool Program Date: 7/12/2017

Depth From (usft)	Depth To (usft)	Survey (Wellbore)	Tool Name	Remarks
1 0.0	22,868.3	Plan #0.2 (OH)	MWD	MWD - Standard

Plan Sections

Measured Depth (usft)	Inclination (°)	Azimuth (°)	Vertical Depth (usft)	+N/-S (usft)	+E/-W (usft)	Dogleg Rate (°/100usft)	Build Rate (°/100usft)	Turn Rate (°/100usft)	TFO (°)	Target
0.0	0.00	0.00	0.0	0.0	0.0	0.00	0.00	0.00	0.00	
4,000.0	0.00	0.00	4,000.0	0.0	0.0	0.00	0.00	0.00	0.00	
4,313.1	3.13	67.87	4,313.0	3.2	7.9	1.00	1.00	0.00	67.87	
12,310.6	3.13	67.87	12,298.6	167.8	412.6	0.00	0.00	0.00	0.00	
13,070.3	90.00	179.50	12,785.0	-309.4	441.5	12.00	11.44	14.70	111.60	
22,868.3	90.00	179.50	12,785.0	-10,107.0	527.0	0.00	0.00	0.00	0.00	PBHL (Ruby 2 Fed Co)



Lea County, NM (NAD 83 NME)

Ruby 2 Fed Com #703H

Plan #0.2

PROJECT DETAILS: Lea County, NM (NAD 83 NME)

Geodetic System: US State Plane 1983
 Datum: North American Datum 1983
 Ellipsoid: GRS 1980
 Zone: New Mexico Eastern Zone
 System Datum: Mean Sea Level

WELL DETAILS: #703H

Ground Level: 3305.0
 KB = 25' @ 3330.0usft
 Northing 393647.00 Easting 816370.00 Latitude 32° 4' 44.773 N Longitude 103° 26' 43.260 W

Azimuths to Grid North
 True North: -0.47°
 Magnetic North: 6.46°
 Magnetic Field
 Strength: 47906.9nT
 Dip Angle: 59.95°
 Date: 10/20/2017
 Model: IGRF2015

To convert a Magnetic Direction to a Grid Direction, Add 0.47°
 To convert a Magnetic Direction to a True Direction, Add 6.93° East
 To convert a True Direction to a Grid Direction, Subtract 0.47°

SECTION DETAILS

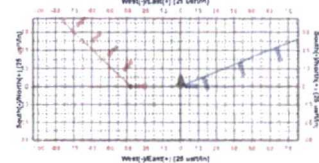
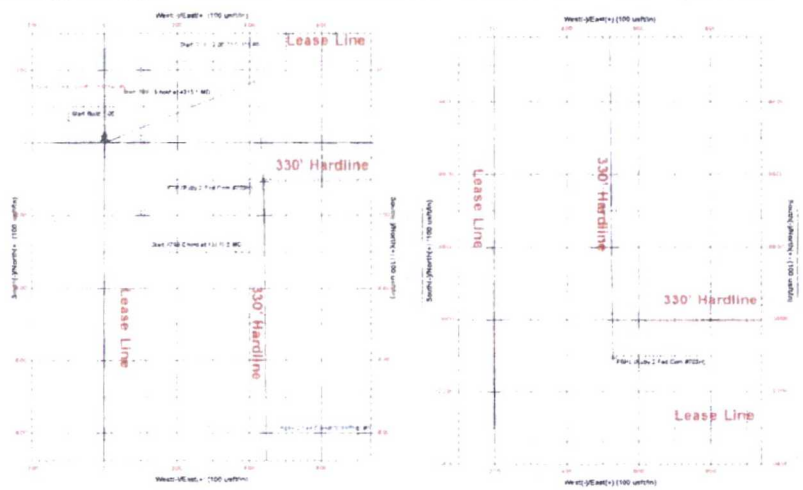
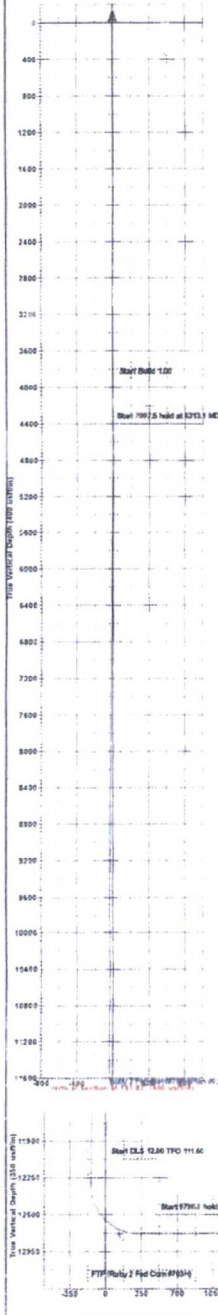
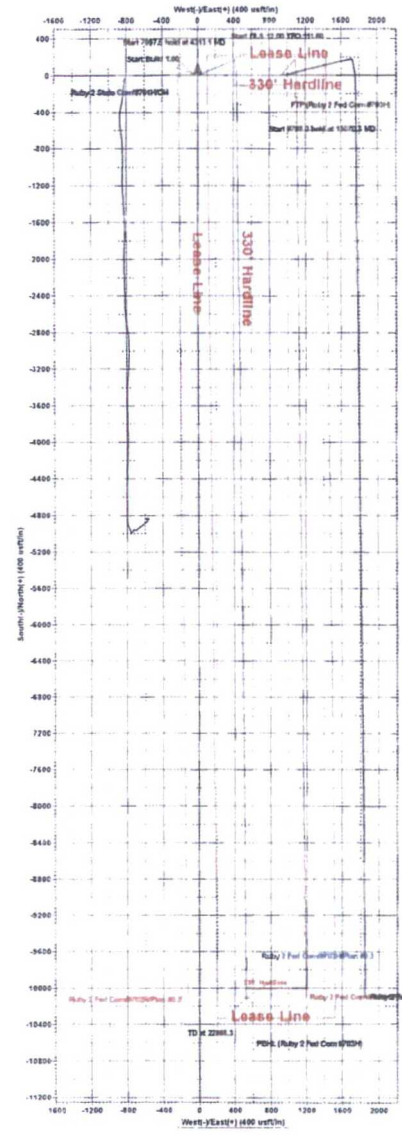
Sec	MD	Inc	Azi	TVD	+N/-S	+E/-W	Dleg	TFace	VSect	Target
1	0.0	0.00	0.00	0.00	0.0	0.0	0.00	0.00	0.0	
2	4000.0	0.00	0.00	4000.0	0.0	0.0	0.00	0.00	0.0	
3	4313.1	3.13	67.87	4313.0	3.2	7.9	1.00	67.87	-2.8	
4	12310.6	3.13	67.87	12298.6	167.8	412.6	0.00	0.00	-146.0	
5	13070.3	90.00	179.50	12785.0	-309.4	441.5	12.00	111.60	331.9	
6	22868.3	90.00	179.50	12785.0	-10107.0	527.0	0.00	0.00	10120.7	PBHL (Ruby 2 Fed Com #703H)

CASING DETAILS

No casing data is available

WELLBORE TARGET DETAILS (MAP CO-ORDINATES)

Name	TVD	+N/-S	+E/-W	Northing	Easting
PBHL (Ruby 2 Fed Com #703H)	12785.0	-10107.0	527.0	393640.00	816897.00
FTP (Ruby 2 Fed Com #703H)	12785.0	-107.0	440.0	393640.00	816810.00





EOG Resources - Midland

Lea County, NM (NAD 83 NME)

Ruby 2 Fed Com

#703H

OH

Plan: Plan #0.2

Standard Planning Report

12 July, 2017



EOG Resources, Inc.

Planning Report

Database: EDM 5000.14 Single User Db
 Company: EOG Resources - Midland
 Project: Lea County, NM (NAD 83 NME)
 Site: Ruby 2 Fed Com
 Well: #703H
 Wellbore: OH
 Design: Plan #0.2

Local Co-ordinate Reference: Well #703H
 TVD Reference: KB = 25' @ 3330.0usft
 MD Reference: KB = 25' @ 3330.0usft
 North Reference: Grid
 Survey Calculation Method: Minimum Curvature

Planned Survey

Measured Depth (usft)	Inclination (°)	Azimuth (°)	Vertical Depth (usft)	+N/-S (usft)	+E/-W (usft)	Vertical Section (usft)	Dogleg Rate (°/100usft)	Build Rate (°/100usft)	Turn Rate (°/100usft)
0.0	0.00	0.00	0.0	0.0	0.0	0.0	0.00	0.00	0.00
100.0	0.00	0.00	100.0	0.0	0.0	0.0	0.00	0.00	0.00
200.0	0.00	0.00	200.0	0.0	0.0	0.0	0.00	0.00	0.00
300.0	0.00	0.00	300.0	0.0	0.0	0.0	0.00	0.00	0.00
400.0	0.00	0.00	400.0	0.0	0.0	0.0	0.00	0.00	0.00
500.0	0.00	0.00	500.0	0.0	0.0	0.0	0.00	0.00	0.00
600.0	0.00	0.00	600.0	0.0	0.0	0.0	0.00	0.00	0.00
700.0	0.00	0.00	700.0	0.0	0.0	0.0	0.00	0.00	0.00
800.0	0.00	0.00	800.0	0.0	0.0	0.0	0.00	0.00	0.00
900.0	0.00	0.00	900.0	0.0	0.0	0.0	0.00	0.00	0.00
1,000.0	0.00	0.00	1,000.0	0.0	0.0	0.0	0.00	0.00	0.00
1,100.0	0.00	0.00	1,100.0	0.0	0.0	0.0	0.00	0.00	0.00
1,200.0	0.00	0.00	1,200.0	0.0	0.0	0.0	0.00	0.00	0.00
1,300.0	0.00	0.00	1,300.0	0.0	0.0	0.0	0.00	0.00	0.00
1,400.0	0.00	0.00	1,400.0	0.0	0.0	0.0	0.00	0.00	0.00
1,500.0	0.00	0.00	1,500.0	0.0	0.0	0.0	0.00	0.00	0.00
1,600.0	0.00	0.00	1,600.0	0.0	0.0	0.0	0.00	0.00	0.00
1,700.0	0.00	0.00	1,700.0	0.0	0.0	0.0	0.00	0.00	0.00
1,800.0	0.00	0.00	1,800.0	0.0	0.0	0.0	0.00	0.00	0.00
1,900.0	0.00	0.00	1,900.0	0.0	0.0	0.0	0.00	0.00	0.00
2,000.0	0.00	0.00	2,000.0	0.0	0.0	0.0	0.00	0.00	0.00
2,100.0	0.00	0.00	2,100.0	0.0	0.0	0.0	0.00	0.00	0.00
2,200.0	0.00	0.00	2,200.0	0.0	0.0	0.0	0.00	0.00	0.00
2,300.0	0.00	0.00	2,300.0	0.0	0.0	0.0	0.00	0.00	0.00
2,400.0	0.00	0.00	2,400.0	0.0	0.0	0.0	0.00	0.00	0.00
2,500.0	0.00	0.00	2,500.0	0.0	0.0	0.0	0.00	0.00	0.00
2,600.0	0.00	0.00	2,600.0	0.0	0.0	0.0	0.00	0.00	0.00
2,700.0	0.00	0.00	2,700.0	0.0	0.0	0.0	0.00	0.00	0.00
2,800.0	0.00	0.00	2,800.0	0.0	0.0	0.0	0.00	0.00	0.00
2,900.0	0.00	0.00	2,900.0	0.0	0.0	0.0	0.00	0.00	0.00
3,000.0	0.00	0.00	3,000.0	0.0	0.0	0.0	0.00	0.00	0.00
3,100.0	0.00	0.00	3,100.0	0.0	0.0	0.0	0.00	0.00	0.00
3,200.0	0.00	0.00	3,200.0	0.0	0.0	0.0	0.00	0.00	0.00
3,300.0	0.00	0.00	3,300.0	0.0	0.0	0.0	0.00	0.00	0.00
3,400.0	0.00	0.00	3,400.0	0.0	0.0	0.0	0.00	0.00	0.00
3,500.0	0.00	0.00	3,500.0	0.0	0.0	0.0	0.00	0.00	0.00
3,600.0	0.00	0.00	3,600.0	0.0	0.0	0.0	0.00	0.00	0.00
3,700.0	0.00	0.00	3,700.0	0.0	0.0	0.0	0.00	0.00	0.00
3,800.0	0.00	0.00	3,800.0	0.0	0.0	0.0	0.00	0.00	0.00
3,900.0	0.00	0.00	3,900.0	0.0	0.0	0.0	0.00	0.00	0.00
4,000.0	0.00	0.00	4,000.0	0.0	0.0	0.0	0.00	0.00	0.00
4,100.0	1.00	67.87	4,100.0	0.3	0.8	-0.3	1.00	1.00	0.00
4,200.0	2.00	67.87	4,200.0	1.3	3.2	-1.1	1.00	1.00	0.00
4,300.0	3.00	67.87	4,299.9	3.0	7.3	-2.6	1.00	1.00	0.00
4,313.1	3.13	67.87	4,313.0	3.2	7.9	-2.8	1.00	1.00	0.00
4,400.0	3.13	67.87	4,399.7	5.0	12.3	-4.4	0.00	0.00	0.00
4,500.0	3.13	67.87	4,499.6	7.1	17.4	-6.2	0.00	0.00	0.00
4,600.0	3.13	67.87	4,599.4	9.1	22.4	-7.9	0.00	0.00	0.00
4,700.0	3.13	67.87	4,699.3	11.2	27.5	-9.7	0.00	0.00	0.00
4,800.0	3.13	67.87	4,799.1	13.2	32.6	-11.5	0.00	0.00	0.00
4,900.0	3.13	67.87	4,899.0	15.3	37.6	-13.3	0.00	0.00	0.00
5,000.0	3.13	67.87	4,998.8	17.4	42.7	-15.1	0.00	0.00	0.00
5,100.0	3.13	67.87	5,098.7	19.4	47.7	-16.9	0.00	0.00	0.00
5,200.0	3.13	67.87	5,198.5	21.5	52.8	-18.7	0.00	0.00	0.00



EOG Resources, Inc.

Planning Report

Database: EDM 5000.14 Single User Db
 Company: EOG Resources - Midland
 Project: Lea County, NM (NAD 83 NME)
 Site: Ruby 2 Fed Com
 Well: #703H
 Wellbore: OH
 Design: Plan #0.2

Local Co-ordinate Reference: Well #703H
 TVD Reference: KB = 25' @ 3330.0usft
 MD Reference: KB = 25' @ 3330.0usft
 North Reference: Grid
 Survey Calculation Method: Minimum Curvature

Planned Survey

Measured Depth (usft)	Inclination (°)	Azimuth (°)	Vertical Depth (usft)	+N/-S (usft)	+E/-W (usft)	Vertical Section (usft)	Dogleg Rate (°/100usft)	Build Rate (°/100usft)	Turn Rate (°/100usft)
5,300.0	3.13	67.87	5,298.4	23.5	57.9	-20.5	0.00	0.00	0.00
5,400.0	3.13	67.87	5,398.2	25.6	62.9	-22.3	0.00	0.00	0.00
5,500.0	3.13	67.87	5,498.1	27.6	68.0	-24.1	0.00	0.00	0.00
5,600.0	3.13	67.87	5,597.9	29.7	73.0	-25.9	0.00	0.00	0.00
5,700.0	3.13	67.87	5,697.8	31.8	78.1	-27.6	0.00	0.00	0.00
5,800.0	3.13	67.87	5,797.6	33.8	83.2	-29.4	0.00	0.00	0.00
5,900.0	3.13	67.87	5,897.5	35.9	88.2	-31.2	0.00	0.00	0.00
6,000.0	3.13	67.87	5,997.3	37.9	93.3	-33.0	0.00	0.00	0.00
6,100.0	3.13	67.87	6,097.2	40.0	98.3	-34.8	0.00	0.00	0.00
6,200.0	3.13	67.87	6,197.0	42.0	103.4	-36.6	0.00	0.00	0.00
6,300.0	3.13	67.87	6,296.9	44.1	108.5	-38.4	0.00	0.00	0.00
6,400.0	3.13	67.87	6,396.7	46.2	113.5	-40.2	0.00	0.00	0.00
6,500.0	3.13	67.87	6,496.6	48.2	118.6	-42.0	0.00	0.00	0.00
6,600.0	3.13	67.87	6,596.4	50.3	123.6	-43.8	0.00	0.00	0.00
6,700.0	3.13	67.87	6,696.3	52.3	128.7	-45.6	0.00	0.00	0.00
6,800.0	3.13	67.87	6,796.1	54.4	133.8	-47.3	0.00	0.00	0.00
6,900.0	3.13	67.87	6,896.0	56.4	138.8	-49.1	0.00	0.00	0.00
7,000.0	3.13	67.87	6,995.8	58.5	143.9	-50.9	0.00	0.00	0.00
7,100.0	3.13	67.87	7,095.7	60.6	148.9	-52.7	0.00	0.00	0.00
7,200.0	3.13	67.87	7,195.5	62.6	154.0	-54.5	0.00	0.00	0.00
7,300.0	3.13	67.87	7,295.4	64.7	159.1	-56.3	0.00	0.00	0.00
7,400.0	3.13	67.87	7,395.2	66.7	164.1	-58.1	0.00	0.00	0.00
7,500.0	3.13	67.87	7,495.1	68.8	169.2	-59.9	0.00	0.00	0.00
7,600.0	3.13	67.87	7,594.9	70.8	174.2	-61.7	0.00	0.00	0.00
7,700.0	3.13	67.87	7,694.8	72.9	179.3	-63.5	0.00	0.00	0.00
7,800.0	3.13	67.87	7,794.6	75.0	184.4	-65.3	0.00	0.00	0.00
7,900.0	3.13	67.87	7,894.5	77.0	189.4	-67.0	0.00	0.00	0.00
8,000.0	3.13	67.87	7,994.3	79.1	194.5	-68.8	0.00	0.00	0.00
8,100.0	3.13	67.87	8,094.2	81.1	199.5	-70.6	0.00	0.00	0.00
8,200.0	3.13	67.87	8,194.0	83.2	204.6	-72.4	0.00	0.00	0.00
8,300.0	3.13	67.87	8,293.9	85.2	209.7	-74.2	0.00	0.00	0.00
8,400.0	3.13	67.87	8,393.7	87.3	214.7	-76.0	0.00	0.00	0.00
8,500.0	3.13	67.87	8,493.6	89.4	219.8	-77.8	0.00	0.00	0.00
8,600.0	3.13	67.87	8,593.4	91.4	224.8	-79.6	0.00	0.00	0.00
8,700.0	3.13	67.87	8,693.3	93.5	229.9	-81.4	0.00	0.00	0.00
8,800.0	3.13	67.87	8,793.1	95.5	235.0	-83.2	0.00	0.00	0.00
8,900.0	3.13	67.87	8,893.0	97.6	240.0	-85.0	0.00	0.00	0.00
9,000.0	3.13	67.87	8,992.8	99.6	245.1	-86.8	0.00	0.00	0.00
9,100.0	3.13	67.87	9,092.7	101.7	250.1	-88.5	0.00	0.00	0.00
9,200.0	3.13	67.87	9,192.5	103.8	255.2	-90.3	0.00	0.00	0.00
9,300.0	3.13	67.87	9,292.4	105.8	260.3	-92.1	0.00	0.00	0.00
9,400.0	3.13	67.87	9,392.2	107.9	265.3	-93.9	0.00	0.00	0.00
9,500.0	3.13	67.87	9,492.1	109.9	270.4	-95.7	0.00	0.00	0.00
9,600.0	3.13	67.87	9,592.0	112.0	275.4	-97.5	0.00	0.00	0.00
9,700.0	3.13	67.87	9,691.8	114.1	280.5	-99.3	0.00	0.00	0.00
9,800.0	3.13	67.87	9,791.7	116.1	285.6	-101.1	0.00	0.00	0.00
9,900.0	3.13	67.87	9,891.5	118.2	290.6	-102.9	0.00	0.00	0.00
10,000.0	3.13	67.87	9,991.4	120.2	295.7	-104.7	0.00	0.00	0.00
10,100.0	3.13	67.87	10,091.2	122.3	300.7	-106.5	0.00	0.00	0.00
10,200.0	3.13	67.87	10,191.1	124.3	305.8	-108.2	0.00	0.00	0.00
10,300.0	3.13	67.87	10,290.9	126.4	310.9	-110.0	0.00	0.00	0.00
10,400.0	3.13	67.87	10,390.8	128.5	315.9	-111.8	0.00	0.00	0.00
10,500.0	3.13	67.87	10,490.6	130.5	321.0	-113.6	0.00	0.00	0.00
10,600.0	3.13	67.87	10,590.5	132.6	326.0	-115.4	0.00	0.00	0.00



EOG Resources, Inc.
Planning Report

Database: EDM 5000.14 Single User Db
Company: EOG Resources - Midland
Project: Lea County, NM (NAD 83 NME)
Site: Ruby 2 Fed Com
Well: #703H
Wellbore: OH
Design: Plan #0.2

Local Co-ordinate Reference: Well #703H
TVD Reference: KB = 25' @ 3330.0usft
MD Reference: KB = 25' @ 3330.0usft
North Reference: Grid
Survey Calculation Method: Minimum Curvature

Planned Survey

Measured Depth (usft)	Inclination (°)	Azimuth (°)	Vertical Depth (usft)	+N/-S (usft)	+E/-W (usft)	Vertical Section (usft)	Dogleg Rate (°/100usft)	Build Rate (°/100usft)	Turn Rate (°/100usft)
10,700.0	3.13	67.87	10,690.3	134.6	331.1	-117.2	0.00	0.00	0.00
10,800.0	3.13	67.87	10,790.2	136.7	335.2	-119.0	0.00	0.00	0.00
10,900.0	3.13	67.87	10,890.0	138.7	341.2	-120.8	0.00	0.00	0.00
11,000.0	3.13	67.87	10,989.9	140.8	346.3	-122.6	0.00	0.00	0.00
11,100.0	3.13	67.87	11,089.7	142.9	351.3	-124.4	0.00	0.00	0.00
11,200.0	3.13	67.87	11,189.6	144.9	356.4	-126.2	0.00	0.00	0.00
11,300.0	3.13	67.87	11,289.4	147.0	361.5	-127.9	0.00	0.00	0.00
11,400.0	3.13	67.87	11,389.3	149.0	366.5	-129.7	0.00	0.00	0.00
11,500.0	3.13	67.87	11,489.1	151.1	371.6	-131.5	0.00	0.00	0.00
11,600.0	3.13	67.87	11,589.0	153.1	376.6	-133.3	0.00	0.00	0.00
11,700.0	3.13	67.87	11,688.8	155.2	381.7	-135.1	0.00	0.00	0.00
11,800.0	3.13	67.87	11,788.7	157.3	386.8	-136.9	0.00	0.00	0.00
11,900.0	3.13	67.87	11,888.5	159.3	391.8	-138.7	0.00	0.00	0.00
12,000.0	3.13	67.87	11,988.4	161.4	396.9	-140.5	0.00	0.00	0.00
12,100.0	3.13	67.87	12,088.2	163.4	401.9	-142.3	0.00	0.00	0.00
12,200.0	3.13	67.87	12,188.1	165.5	407.0	-144.1	0.00	0.00	0.00
12,300.0	3.13	67.87	12,287.9	167.5	412.1	-145.9	0.00	0.00	0.00
12,310.6	3.13	67.87	12,298.6	167.8	412.6	-146.0	0.00	0.00	0.00
12,325.0	2.97	100.56	12,312.9	167.8	413.3	-146.1	12.00	-1.15	227.74
12,350.0	4.60	140.34	12,337.8	166.9	414.6	-145.1	12.00	6.55	159.13
12,375.0	7.18	155.70	12,362.7	164.8	415.9	-142.9	12.00	10.31	61.43
12,400.0	10.00	162.73	12,387.4	161.3	417.2	-139.3	12.00	11.26	28.13
12,425.0	12.90	166.67	12,411.9	156.5	418.5	-134.5	12.00	11.59	15.73
12,450.0	15.83	169.17	12,436.1	150.4	419.7	-128.3	12.00	11.74	10.01
12,475.0	18.79	170.90	12,460.0	143.1	421.0	-121.0	12.00	11.82	6.93
12,500.0	21.76	172.18	12,483.4	134.5	422.3	-112.3	12.00	11.87	5.10
12,525.0	24.73	173.16	12,506.4	124.7	423.5	-102.5	12.00	11.90	3.93
12,550.0	27.71	173.94	12,528.8	113.7	424.8	-91.5	12.00	11.92	3.13
12,575.0	30.69	174.59	12,550.7	101.6	426.0	-79.3	12.00	11.93	2.57
12,600.0	33.68	175.12	12,571.8	88.4	427.2	-66.0	12.00	11.95	2.15
12,625.0	36.67	175.58	12,592.3	74.0	428.3	-51.6	12.00	11.95	1.84
12,650.0	39.66	175.98	12,611.9	58.6	429.5	-36.2	12.00	11.96	1.60
12,675.0	42.65	176.34	12,630.7	42.2	430.6	-19.7	12.00	11.96	1.41
12,700.0	45.64	176.65	12,648.7	24.8	431.6	-2.3	12.00	11.97	1.26
12,725.0	48.63	176.93	12,665.7	6.5	432.7	16.0	12.00	11.97	1.14
12,750.0	51.63	177.19	12,681.7	-12.7	433.7	35.2	12.00	11.97	1.04
12,775.0	54.62	177.43	12,696.7	-32.6	434.6	55.2	12.00	11.98	0.95
12,800.0	57.62	177.65	12,710.6	-53.4	435.5	76.0	12.00	11.98	0.88
12,825.0	60.61	177.86	12,723.5	-74.8	436.3	97.4	12.00	11.98	0.83
12,850.0	63.61	178.05	12,735.2	-96.9	437.1	119.5	12.00	11.98	0.78
12,875.0	66.60	178.24	12,745.7	-119.5	437.8	142.2	12.00	11.98	0.74
12,878.1	66.97	178.26	12,746.9	-122.4	437.9	145.0	12.00	11.98	0.72
FTP (Ruby 2 Fed Com #703H)									
12,900.0	69.60	178.42	12,755.0	-142.7	438.5	165.4	12.00	11.98	0.71
12,925.0	72.59	178.59	12,763.1	-166.4	439.1	189.0	12.00	11.98	0.68
12,950.0	75.59	178.75	12,770.0	-190.4	439.7	213.0	12.00	11.98	0.66
12,975.0	78.58	178.91	12,775.5	-214.8	440.2	237.4	12.00	11.98	0.64
13,000.0	81.58	179.07	12,779.8	-239.4	440.6	262.0	12.00	11.98	0.63
13,025.0	84.58	179.22	12,782.9	-264.2	441.0	286.8	12.00	11.98	0.62
13,050.0	87.57	179.38	12,784.6	-289.1	441.3	311.7	12.00	11.98	0.61
13,070.3	90.00	179.50	12,785.0	-309.4	441.5	331.9	12.00	11.98	0.61
13,100.0	90.00	179.50	12,785.0	-339.1	441.8	361.7	0.00	0.00	0.00
13,200.0	90.00	179.50	12,785.0	-439.1	442.6	461.6	0.00	0.00	0.00



EOG Resources, Inc.

Planning Report

Database: EDM 5000.14 Single User Db
 Company: EOG Resources - Midland
 Project: Lea County, NM (NAD 83 NME)
 Site: Ruby 2 Fed Com
 Well: #703H
 Wellbore: OH
 Design: Plan #0.2

Local Co-ordinate Reference: Well #703H
 TVD Reference: KB = 25' @ 3330.0usft
 MD Reference: KB = 25' @ 3330.0usft
 North Reference: Grid
 Survey Calculation Method: Minimum Curvature

Planned Survey

Measured Depth (usft)	Inclination (°)	Azimuth (°)	Vertical Depth (usft)	+N/-S (usft)	+E/-W (usft)	Vertical Section (usft)	Dogleg Rate (°/100usft)	Build Rate (°/100usft)	Turn Rate (°/100usft)
13,300.0	90.00	179.50	12,785.0	-539.1	443.5	561.5	0.00	0.00	0.00
13,400.0	90.00	179.50	12,785.0	-639.1	444.4	661.4	0.00	0.00	0.00
13,500.0	90.00	179.50	12,785.0	-739.1	445.2	761.3	0.00	0.00	0.00
13,600.0	90.00	179.50	12,785.0	-839.1	446.1	861.2	0.00	0.00	0.00
13,700.0	90.00	179.50	12,785.0	-939.1	447.0	961.1	0.00	0.00	0.00
13,800.0	90.00	179.50	12,785.0	-1,039.1	447.9	1,061.0	0.00	0.00	0.00
13,900.0	90.00	179.50	12,785.0	-1,139.1	448.7	1,160.9	0.00	0.00	0.00
14,000.0	90.00	179.50	12,785.0	-1,239.1	449.6	1,260.8	0.00	0.00	0.00
14,100.0	90.00	179.50	12,785.0	-1,339.1	450.5	1,360.7	0.00	0.00	0.00
14,200.0	90.00	179.50	12,785.0	-1,439.1	451.4	1,460.6	0.00	0.00	0.00
14,300.0	90.00	179.50	12,785.0	-1,539.1	452.2	1,560.5	0.00	0.00	0.00
14,400.0	90.00	179.50	12,785.0	-1,639.1	453.1	1,660.4	0.00	0.00	0.00
14,500.0	90.00	179.50	12,785.0	-1,739.1	454.0	1,760.3	0.00	0.00	0.00
14,600.0	90.00	179.50	12,785.0	-1,839.1	454.8	1,860.2	0.00	0.00	0.00
14,700.0	90.00	179.50	12,785.0	-1,939.1	455.7	1,960.2	0.00	0.00	0.00
14,800.0	90.00	179.50	12,785.0	-2,039.0	456.6	2,060.1	0.00	0.00	0.00
14,900.0	90.00	179.50	12,785.0	-2,139.0	457.5	2,160.0	0.00	0.00	0.00
15,000.0	90.00	179.50	12,785.0	-2,239.0	458.3	2,259.9	0.00	0.00	0.00
15,100.0	90.00	179.50	12,785.0	-2,339.0	459.2	2,359.8	0.00	0.00	0.00
15,200.0	90.00	179.50	12,785.0	-2,439.0	460.1	2,459.7	0.00	0.00	0.00
15,300.0	90.00	179.50	12,785.0	-2,539.0	461.0	2,559.6	0.00	0.00	0.00
15,400.0	90.00	179.50	12,785.0	-2,639.0	461.8	2,659.5	0.00	0.00	0.00
15,500.0	90.00	179.50	12,785.0	-2,739.0	462.7	2,759.4	0.00	0.00	0.00
15,600.0	90.00	179.50	12,785.0	-2,839.0	463.6	2,859.3	0.00	0.00	0.00
15,700.0	90.00	179.50	12,785.0	-2,939.0	464.4	2,959.2	0.00	0.00	0.00
15,800.0	90.00	179.50	12,785.0	-3,039.0	465.3	3,059.1	0.00	0.00	0.00
15,900.0	90.00	179.50	12,785.0	-3,139.0	466.2	3,159.0	0.00	0.00	0.00
16,000.0	90.00	179.50	12,785.0	-3,239.0	467.1	3,258.9	0.00	0.00	0.00
16,100.0	90.00	179.50	12,785.0	-3,339.0	467.9	3,358.8	0.00	0.00	0.00
16,200.0	90.00	179.50	12,785.0	-3,439.0	468.8	3,458.7	0.00	0.00	0.00
16,300.0	90.00	179.50	12,785.0	-3,539.0	469.7	3,558.6	0.00	0.00	0.00
16,400.0	90.00	179.50	12,785.0	-3,639.0	470.6	3,658.6	0.00	0.00	0.00
16,500.0	90.00	179.50	12,785.0	-3,739.0	471.4	3,758.5	0.00	0.00	0.00
16,600.0	90.00	179.50	12,785.0	-3,839.0	472.3	3,858.4	0.00	0.00	0.00
16,700.0	90.00	179.50	12,785.0	-3,939.0	473.2	3,958.3	0.00	0.00	0.00
16,800.0	90.00	179.50	12,785.0	-4,039.0	474.0	4,058.2	0.00	0.00	0.00
16,900.0	90.00	179.50	12,785.0	-4,139.0	474.9	4,158.1	0.00	0.00	0.00
17,000.0	90.00	179.50	12,785.0	-4,239.0	475.8	4,258.0	0.00	0.00	0.00
17,100.0	90.00	179.50	12,785.0	-4,339.0	476.7	4,357.9	0.00	0.00	0.00
17,200.0	90.00	179.50	12,785.0	-4,439.0	477.5	4,457.8	0.00	0.00	0.00
17,300.0	90.00	179.50	12,785.0	-4,539.0	478.4	4,557.7	0.00	0.00	0.00
17,400.0	90.00	179.50	12,785.0	-4,638.9	479.3	4,657.6	0.00	0.00	0.00
17,500.0	90.00	179.50	12,785.0	-4,738.9	480.2	4,757.5	0.00	0.00	0.00
17,600.0	90.00	179.50	12,785.0	-4,838.9	481.0	4,857.4	0.00	0.00	0.00
17,700.0	90.00	179.50	12,785.0	-4,938.9	481.9	4,957.3	0.00	0.00	0.00
17,800.0	90.00	179.50	12,785.0	-5,038.9	482.8	5,057.2	0.00	0.00	0.00
17,900.0	90.00	179.50	12,785.0	-5,138.9	483.6	5,157.1	0.00	0.00	0.00
18,000.0	90.00	179.50	12,785.0	-5,238.9	484.5	5,257.0	0.00	0.00	0.00
18,100.0	90.00	179.50	12,785.0	-5,338.9	485.4	5,357.0	0.00	0.00	0.00
18,200.0	90.00	179.50	12,785.0	-5,438.9	486.3	5,456.9	0.00	0.00	0.00
18,300.0	90.00	179.50	12,785.0	-5,538.9	487.1	5,556.8	0.00	0.00	0.00
18,400.0	90.00	179.50	12,785.0	-5,638.9	488.0	5,656.7	0.00	0.00	0.00
18,500.0	90.00	179.50	12,785.0	-5,738.9	488.9	5,756.6	0.00	0.00	0.00
18,600.0	90.00	179.50	12,785.0	-5,838.9	489.8	5,856.5	0.00	0.00	0.00



EOG Resources, Inc.

Planning Report

Database: EDM 5000.14 Single User Db
 Company: EOG Resources - Midland
 Project: Lea County, NM (NAD 83 NME)
 Site: Ruby 2 Fed Com
 Well: #703H
 Wellbore: OH
 Design: Plan #0.2

Local Co-ordinate Reference: Well #703H
 TVD Reference: KB = 25' @ 3330.0usft
 MD Reference: KB = 25' @ 3330.0usft
 North Reference: Grid
 Survey Calculation Method: Minimum Curvature

Planned Survey

Measured Depth (usft)	Inclination (°)	Azimuth (°)	Vertical Depth (usft)	+N/-S (usft)	+E/-W (usft)	Vertical Section (usft)	Dogleg Rate (°/100usft)	Build Rate (°/100usft)	Turn Rate (°/100usft)
18,700.0	90.00	179.50	12,785.0	-5,938.9	490.6	5,956.4	0.00	0.00	0.00
18,800.0	90.00	179.50	12,785.0	-6,038.9	491.5	6,056.3	0.00	0.00	0.00
18,900.0	90.00	179.50	12,785.0	-6,138.9	492.4	6,156.2	0.00	0.00	0.00
19,000.0	90.00	179.50	12,785.0	-6,238.9	493.2	6,256.1	0.00	0.00	0.00
19,100.0	90.00	179.50	12,785.0	-6,338.9	494.1	6,356.0	0.00	0.00	0.00
19,200.0	90.00	179.50	12,785.0	-6,438.9	495.0	6,455.9	0.00	0.00	0.00
19,300.0	90.00	179.50	12,785.0	-6,538.9	495.9	6,555.8	0.00	0.00	0.00
19,400.0	90.00	179.50	12,785.0	-6,638.9	496.7	6,655.7	0.00	0.00	0.00
19,500.0	90.00	179.50	12,785.0	-6,738.9	497.6	6,755.6	0.00	0.00	0.00
19,600.0	90.00	179.50	12,785.0	-6,838.9	498.5	6,855.5	0.00	0.00	0.00
19,700.0	90.00	179.50	12,785.0	-6,938.9	499.4	6,955.4	0.00	0.00	0.00
19,800.0	90.00	179.50	12,785.0	-7,038.9	500.2	7,055.4	0.00	0.00	0.00
19,900.0	90.00	179.50	12,785.0	-7,138.9	501.1	7,155.3	0.00	0.00	0.00
20,000.0	90.00	179.50	12,785.0	-7,238.8	502.0	7,255.2	0.00	0.00	0.00
20,100.0	90.00	179.50	12,785.0	-7,338.8	502.8	7,355.1	0.00	0.00	0.00
20,200.0	90.00	179.50	12,785.0	-7,438.8	503.7	7,455.0	0.00	0.00	0.00
20,300.0	90.00	179.50	12,785.0	-7,538.8	504.6	7,554.9	0.00	0.00	0.00
20,400.0	90.00	179.50	12,785.0	-7,638.8	505.5	7,654.8	0.00	0.00	0.00
20,500.0	90.00	179.50	12,785.0	-7,738.8	506.3	7,754.7	0.00	0.00	0.00
20,600.0	90.00	179.50	12,785.0	-7,838.8	507.2	7,854.6	0.00	0.00	0.00
20,700.0	90.00	179.50	12,785.0	-7,938.8	508.1	7,954.5	0.00	0.00	0.00
20,800.0	90.00	179.50	12,785.0	-8,038.8	509.0	8,054.4	0.00	0.00	0.00
20,900.0	90.00	179.50	12,785.0	-8,138.8	509.8	8,154.3	0.00	0.00	0.00
21,000.0	90.00	179.50	12,785.0	-8,238.8	510.7	8,254.2	0.00	0.00	0.00
21,100.0	90.00	179.50	12,785.0	-8,338.8	511.6	8,354.1	0.00	0.00	0.00
21,200.0	90.00	179.50	12,785.0	-8,438.8	512.4	8,454.0	0.00	0.00	0.00
21,300.0	90.00	179.50	12,785.0	-8,538.8	513.3	8,553.9	0.00	0.00	0.00
21,400.0	90.00	179.50	12,785.0	-8,638.8	514.2	8,653.8	0.00	0.00	0.00
21,500.0	90.00	179.50	12,785.0	-8,738.8	515.1	8,753.8	0.00	0.00	0.00
21,600.0	90.00	179.50	12,785.0	-8,838.8	515.9	8,853.7	0.00	0.00	0.00
21,700.0	90.00	179.50	12,785.0	-8,938.8	516.8	8,953.6	0.00	0.00	0.00
21,800.0	90.00	179.50	12,785.0	-9,038.8	517.7	9,053.5	0.00	0.00	0.00
21,900.0	90.00	179.50	12,785.0	-9,138.8	518.6	9,153.4	0.00	0.00	0.00
22,000.0	90.00	179.50	12,785.0	-9,238.8	519.4	9,253.3	0.00	0.00	0.00
22,100.0	90.00	179.50	12,785.0	-9,338.8	520.3	9,353.2	0.00	0.00	0.00
22,200.0	90.00	179.50	12,785.0	-9,438.8	521.2	9,453.1	0.00	0.00	0.00
22,300.0	90.00	179.50	12,785.0	-9,538.8	522.0	9,553.0	0.00	0.00	0.00
22,400.0	90.00	179.50	12,785.0	-9,638.8	522.9	9,652.9	0.00	0.00	0.00
22,500.0	90.00	179.50	12,785.0	-9,738.8	523.8	9,752.8	0.00	0.00	0.00
22,600.0	90.00	179.50	12,785.0	-9,838.8	524.7	9,852.7	0.00	0.00	0.00
22,700.0	90.00	179.50	12,785.0	-9,938.7	525.5	9,952.6	0.00	0.00	0.00
22,800.0	90.00	179.50	12,785.0	-10,038.7	526.4	10,052.5	0.00	0.00	0.00
22,868.3	90.00	179.50	12,785.0	-10,107.0	527.0	10,120.7	0.00	0.00	0.00

PBHL (Ruby 2 Fed Com #703H)



EOG Resources, Inc.
Planning Report

Database: EDM 5000.14 Single User Db
 Company: EOG Resources - Midland
 Project: Lea County, NM (NAD 83 NME)
 Site: Ruby 2 Fed Com
 Well: #703H
 Wellbore: OH
 Design: Plan #0.2

Local Co-ordinate Reference: Well #703H
 TVD Reference: KB = 25' @ 3330.0usft
 MD Reference: KB = 25' @ 3330.0usft
 North Reference: Grid
 Survey Calculation Method: Minimum Curvature

Design Targets

Target Name	Dip Angle	Dip Dir.	TVD	+N/-S	+E/-W	Northing	Easting	Latitude	Longitude
- hit/miss target	(°)	(°)	(usft)	(usft)	(usft)	(usft)	(usft)		
- Shape									
PBHL (Ruby 2 Fed Com - plan hits target center - Point	0.00	0.07	12,785.0	-10.107.0	527.0	383,540.00	816,897.00	32° 3' 4.720 N	103° 26' 38.103 W
FTP (Ruby 2 Fed Com # - plan misses target center by 41.1usft at 12878.1usft MD (12746.9 TVD, -122.4 N, 437.9 E) - Point	0.00	0.07	12,785.0	-107.0	440.0	393,540.00	816,810.00	32° 4' 43.678 N	103° 26' 38.156 W