

DISTRICT I  
1625 N. FRENCH DR., HOBBS, NM 88240  
Phone: (575) 393-6161 Fax: (575) 393-0720

DISTRICT II  
811 S. FIRST ST., ARTESIA, NM 88210  
Phone: (575) 748-1283 Fax: (575) 748-0720

DISTRICT III  
1000 RIO BRAZOS RD., AZTEC, NM 87410  
Phone: (505) 334-6178 Fax: (505) 334-8178

DISTRICT IV  
1220 S. ST. FRANCIS DR., SANTA FE, NM 87505  
Phone: (505) 476-3460 Fax: (505) 476-3462

State of New Mexico  
Energy, Minerals & Natural Resources Department

OIL CONSERVATION DIVISION

1220 SOUTH ST. FRANCIS DR.  
Santa Fe, New Mexico 87505

Form C-102

Revised August 1, 2011

Submit one copy to appropriate  
District Office

☐ AMENDED REPORT

WELL LOCATION AND ACREAGE DEDICATION PLAT

|                            |                                      |  |
|----------------------------|--------------------------------------|--|
| API Number<br>30-025-43708 | Pool Code<br>97899                   | Pool Name<br>WC-025 G-06 S253206M; Bone Spring |
| Property Code<br>40143     | Property Name<br>WINDWARD FEDERAL    | Well Number<br>12H                             |
| OGRID No.<br>217955        | Operator Name<br>COG PRODUCTION, LLC | Elevation<br>3548.0'                           |

Surface Location

|                    |               |                  |               |         |                      |                           |                      |                        |               |
|--------------------|---------------|------------------|---------------|---------|----------------------|---------------------------|----------------------|------------------------|---------------|
| UL or lot No.<br>A | Section<br>30 | Township<br>24-S | Range<br>32-E | Lot Idn | Feet from the<br>210 | North/South line<br>NORTH | Feet from the<br>531 | East/West line<br>EAST | County<br>LEA |
|--------------------|---------------|------------------|---------------|---------|----------------------|---------------------------|----------------------|------------------------|---------------|

Bottom Hole Location If Different From Surface

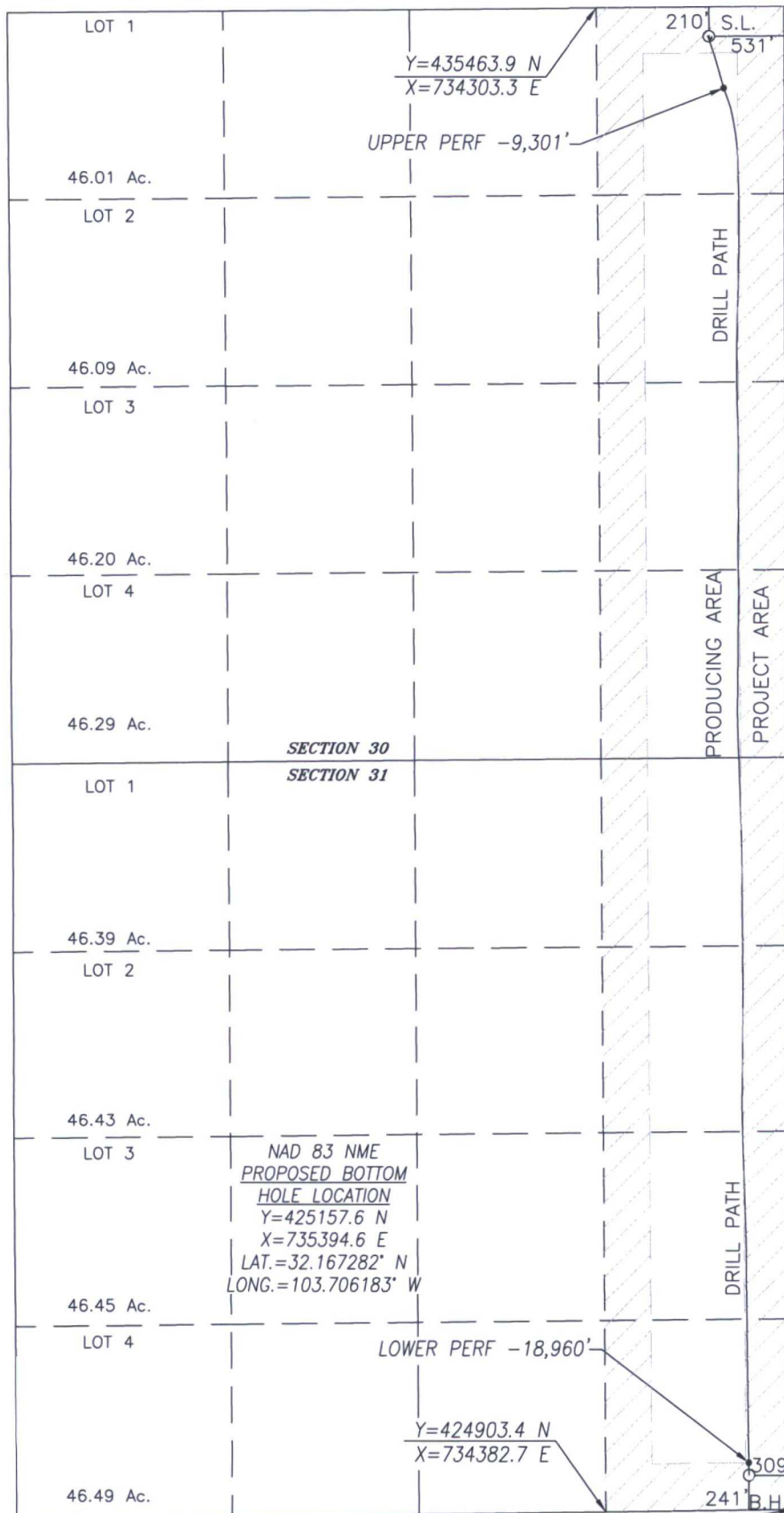
|                    |               |                  |               |         |                      |                           |                      |                        |               |
|--------------------|---------------|------------------|---------------|---------|----------------------|---------------------------|----------------------|------------------------|---------------|
| UL or lot No.<br>P | Section<br>31 | Township<br>24-S | Range<br>32-E | Lot Idn | Feet from the<br>241 | North/South line<br>SOUTH | Feet from the<br>308 | East/West line<br>EAST | County<br>LEA |
|--------------------|---------------|------------------|---------------|---------|----------------------|---------------------------|----------------------|------------------------|---------------|

|                        |                 |                    |           |
|------------------------|-----------------|--------------------|-----------|
| Dedicated Acres<br>320 | Joint or Infill | Consolidation Code | Order No. |
|------------------------|-----------------|--------------------|-----------|

NO ALLOWABLE WILL BE ASSIGNED TO THIS COMPLETION UNTIL ALL INTERESTS HAVE BEEN CONSOLIDATED  
OR A NON-STANDARD UNIT HAS BEEN APPROVED BY THE DIVISION

SEE PAGE 2

|                               |   |                             |
|-------------------------------|---|-----------------------------|
| Property Code<br><b>40143</b> | Property Name<br><b>WINDWARD FEDERAL</b>    | Well Number<br><b>12H</b>   |
| OGRID No.<br><b>217955</b>    | Operator Name<br><b>COG PRODUCTION, LLC</b> | Elevation<br><b>3548.0'</b> |



NAD 83 NME  
SURFACE LOCATION  
Y=435262.0 N  
X=735098.9 E  
LAT.=32.195061° N  
LONG.=103.706948° W

BOREPATH SHOWN HEREON IS BASED ON  
DIRECTIONAL SURVEY REPORT PROVIDED BY  
COG PRODUCTION, LLC FOR THE WINDWARD  
FEDERAL #12H SUPPLIED TO HARCROW  
SURVEYING, LLC ON JULY 27, 2017.

1200 0 1200  
SCALE: 1"=1200'

#### OPERATOR CERTIFICATION

I hereby certify that the information herein is true and complete to the best of my knowledge and belief, and that this organization either owns a working interest or unleased mineral interest in the land including the proposed bottom hole location or has a right to drill this well at this location pursuant to a contract with an owner of such mineral or working interest, or to a voluntary pooling agreement or a compulsory pooling order heretofore entered by the division.

Signature Stormi Davis Date 8/8/17

Stormi Davis  
Printed Name

sdavis@concho.com  
E-mail Address

#### SURVEYOR CERTIFICATION

I hereby certify that the well location shown on this plat was plotted from field notes of actual surveys made by me or under my supervision, and that the same is true and correct to the best of my belief.

APRIL 5, 2016/MAY 11, 2017  
Date of Survey/Date of Geographic Survey

Signature & Seal of Professional Surveyor



Chad Harcrow 7/28/17  
Certificate No. CHAD HARCROW 17777