

District I  
1625 N. French Dr., Hobbs, NM 88240  
Phone: (505) 393-6161 Fax: (505) 393-0720  
District II  
811 S. First St., Artesia, NM 88210  
Phone: (505) 748-1283 Fax: (505) 748-9720  
District III  
1000 Rio Brazos Road, Aztec, NM 87410  
Phone: (505) 334-6178 Fax: (505) 334-6170  
District IV  
1220 S. St. Francis Dr., Santa Fe, NM 87505  
Phone: (505) 476-3460 Fax: (505) 476-3462

State of New Mexico  
Energy, Minerals & Natural Resources Department  
OIL CONSERVATION DIVISION  
1220 South St. Francis Dr.  
Santa Fe, NM 87505

Form C-102  
Revised August 1, 2011  
Submit one copy to appropriate  
District Office

☐ AMENDED REPORT

WELL LOCATION AND ACREAGE DEDICATION PLAT

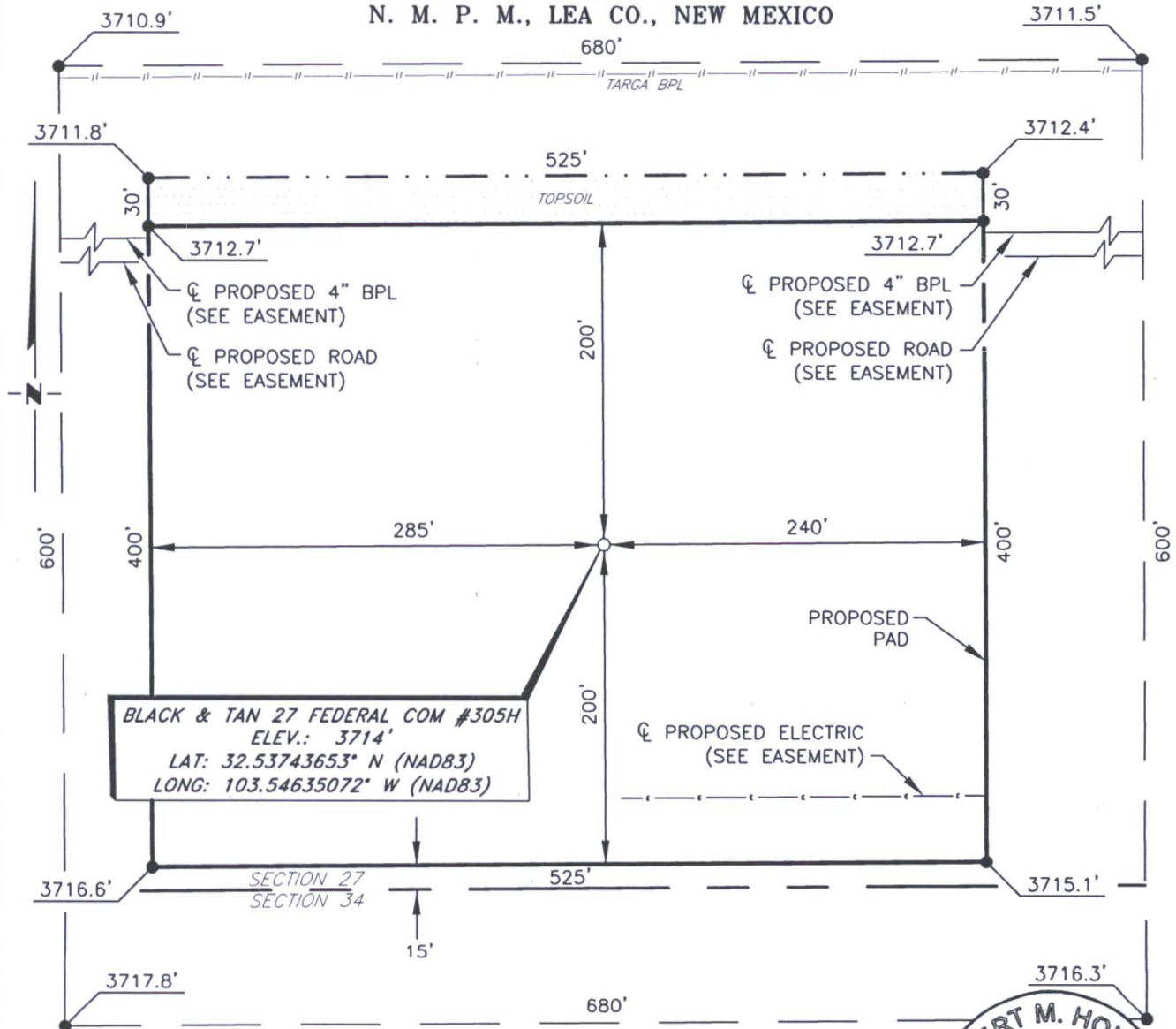
<sup>1</sup> API Number 30-025- <b>43940</b>		<sup>2</sup> Pool Code 37580		<sup>3</sup> Pool Name LEA; BONE SPRING, S.					
<sup>4</sup> Property Code <b>319564</b>		<sup>5</sup> Property Name BLACK & TAN 27 FEDERAL COM				<sup>6</sup> Well Number 305H			
<sup>7</sup> OGRID NO. 873		<sup>8</sup> Operator Name APACHE CORPORATION				<sup>9</sup> Elevation 3714'			
<sup>10</sup> Surface Location									
UL or lot no. 0	Section 27	Township 20S	Range 34E	Lot Idn	Feet from the 215	North/South line SOUTH	Feet From the 2112	East/West line EAST	County LEA
<sup>11</sup> Bottom Hole Location If Different From Surface									
UL or lot no. B	Section 27	Township 20S	Range 34E	Lot Idn	Feet from the 280	North/South line NORTH	Feet from the 2315	East/West line EAST	County LEA
<sup>12</sup> Dedicated Acres 160		<sup>13</sup> Joint or Infill		<sup>14</sup> Consolidation Code		<sup>15</sup> Order No.			

No allowable will be assigned to this completion until all interest have been consolidated or a non-standard unit has been approved by the division.

<sup>16</sup> (C) <b>GEODETIC DATA</b> NAD 83 GRID - NM EAST <b>SURFACE LOCATION (SL)</b> N: 560146.0 - E: 783862.2 LAT: 32.53743653°N - LONG: 103.54635072°W <b>PENETRATION POINT (PP @ BONE SPRING)</b> N: 560146.0 - E: 783862.2 LAT: 32.53743653°N - LONG: 103.54635072°W MD = 8,577', TVD = 8,577' <b>KICK OFF POINT (KOP)</b> N: 560146.0 - E: 783862.2 LAT: 32.53743653°N - LONG: 103.54635072°W MD = 10,566.45', TVD = 10,566.45' <b>LAST TAKE POINT (LTP)</b> N: 564881.2 - E: 783622.4 LAT: 32.55045613°N - LONG: 103.54701552°W MD = 15,673.91', TVD = 11,039.87' <b>BOTTOM HOLE/EXIT POINT (BH/EP)</b> N: 564931.1 - E: 783622.0 LAT: 32.55059348°N - LONG: 103.54701550°W MD = 15,723.83', TVD = 11,039'		(D) BH/EP 330' LTP 280'		(E) 2315' 2315'	<sup>17</sup> <b>OPERATOR CERTIFICATION</b> I hereby certify that the information contained herein is true and complete to the best of my knowledge and belief, and that this organization either owns a working interest or unleased mineral interest in the land including the proposed bottom hole location or has a right to drill this well at this location pursuant to a contract with an owner of such a mineral or working interest, or to a voluntary pooling agreement or a compulsory pooling order heretofore entered by the division. <i>Sorina L Flores</i> 4/12/2017 Signature Date <b>SORINA L. FLORES</b> Printed Name sorina.flores@apachecorp.com E-mail Address	
(B) <b>CORNER DATA</b> NAD 83 GRID - NM EAST A: FOUND BRASS CAP "1912" N 559906.6 - E 780684.6 B: FOUND BRASS CAP "1912" N 562546.2 - E 780666.1 C: FOUND BRASS CAP ILLEGIBLE N 565185.2 - E 780647.6 D: FOUND BRASS CAP "1912" N 565208.2 - E 783290.2 E: FOUND BRASS CAP "1912" N 565231.3 - E 785934.3 F: FOUND BRASS CAP "1912" N 562589.8 - E 785953.8 G: FOUND 1/2" REBAR N 559946.7 - E 785975.6 H: FOUND BRASS CAP "1912" N 559927.1 - E 783330.5 1: CALCULATED POINT N 559936.9 - E 784653.0 2: CALCULATED POINT N 565219.8 - E 784612.3		27 40 Ac. 40 Ac. 40 Ac. SEE DETAIL "A" SL/PP/KOP		(F) <b>DETAIL "A"</b> 3710.9' 680' 3711.5' 600' O.S.L. 3717.8' 3716.3'	<sup>18</sup> <b>SURVEYOR CERTIFICATION</b> I hereby certify that the well location shown on this plat was plotted from field notes of actual surveys made by me or under my supervision, and that the same is true and correct to the best of my belief. <b>2-27-2017</b> Date of Survey Signature and Seal of Professional Surveyor <b>19680</b> Certificate Number	
(A) 3180'		(H) 215'		(I) 2112'	(G)	

RRC-Job No.: LS1702125

**APACHE CORPORATION**  
**BLACK & TAN 27 FEDERAL COM #305H**  
**(215' FSL & 3180' FWL)**  
**SECTION 27, T20S, R34E**  
**N. M. P. M., LEA CO., NEW MEXICO**

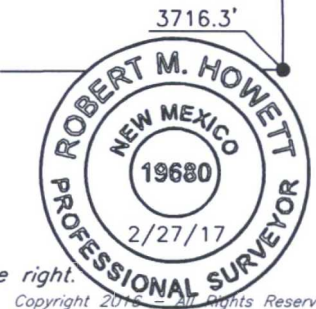


DIRECTIONS TO LOCATION

SCALE: 1" = 100'  
 0 50 100  
 BEARINGS ARE  
 NAD 83 GRID - NM EAST  
 DISTANCES ARE  
 GROUND.

From the intersection of N.M. Hwy. 176 and CR-27 (Skeen Rd.)  
 Go Northwest on CR-27 approx. 0.4 miles to a curve to the left;  
 Turn left and go West approx. 0.3 miles to a curve to the right;  
 Take curve to the right and go North approx. 0.6 miles to lease  
 road on the right;  
 Turn right and go North approx. 0.1 miles location 200 feet on the right.

Firm No.: TX 10193838 NM 4655451



Copyright 2015 - All Rights Reserved

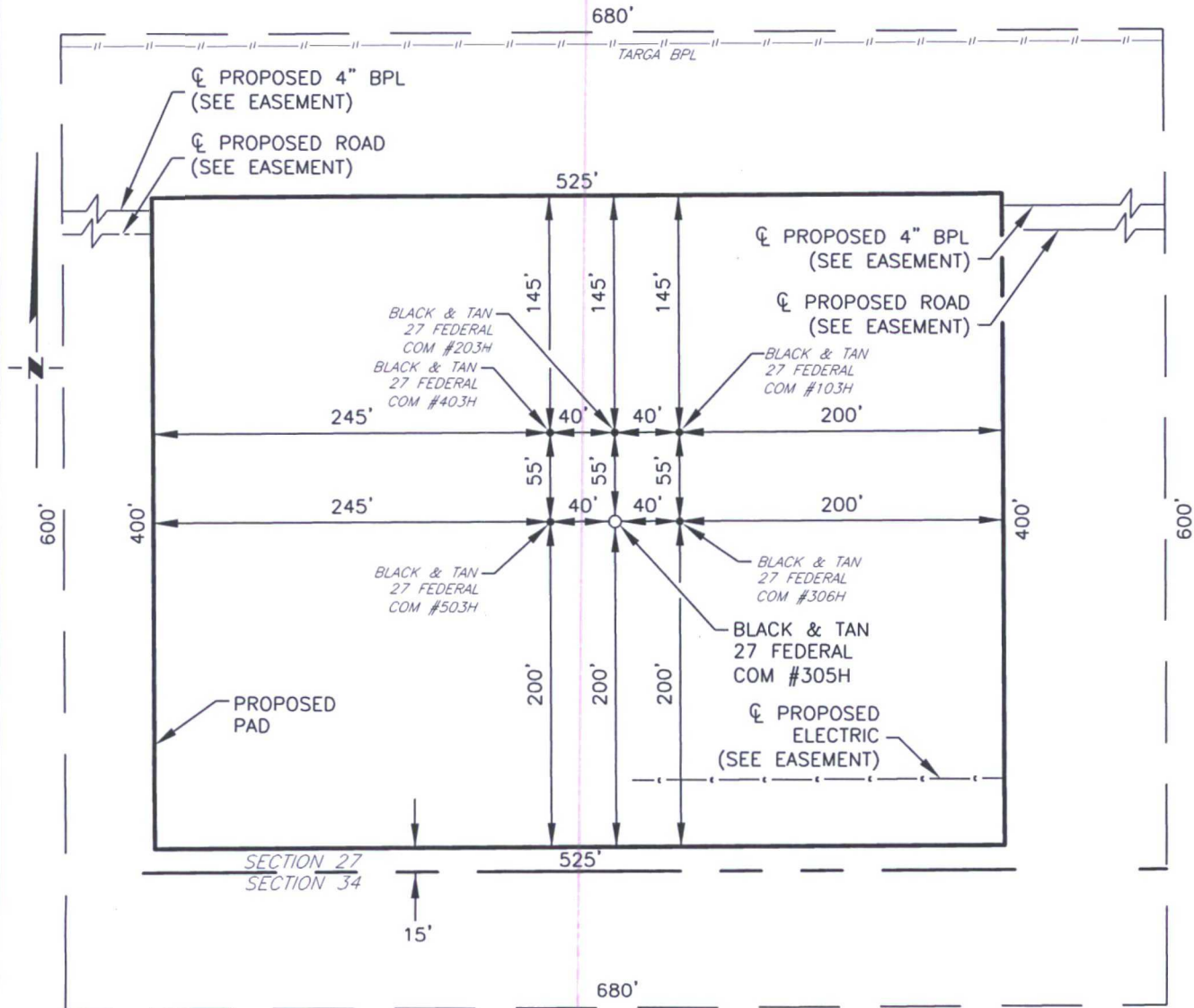
NO.	REVISION	DATE
JOB NO.:	LS1702125	
DWG. NO.:	1702125PAD	

**RRC**

308 W. BROADWAY ST., HOBBS, NM 88240 (575) 964-8200

SCALE: 1" = 100'
DATE: 2-21-2017
SURVEYED BY: JM/HD
DRAWN BY: LPS
APPROVED BY: RMH
SHEET: 1 OF 1

**APACHE CORPORATION  
BLACK & TAN 27 FEDERAL COM  
FUTURE PAD DEVELOPMENT  
SECTION 27, T20S, R34E  
N. M. P. M., LEA CO., NEW MEXICO**



SCALE: 1" = 100'  
0 50 100

BEARINGS ARE  
NAD 27 GRID - NM EAST  
DISTANCES ARE  
GROUND.

Firm No.: TX 10193838 NM 4655451

Copyright 2016 - All Rights Reserved

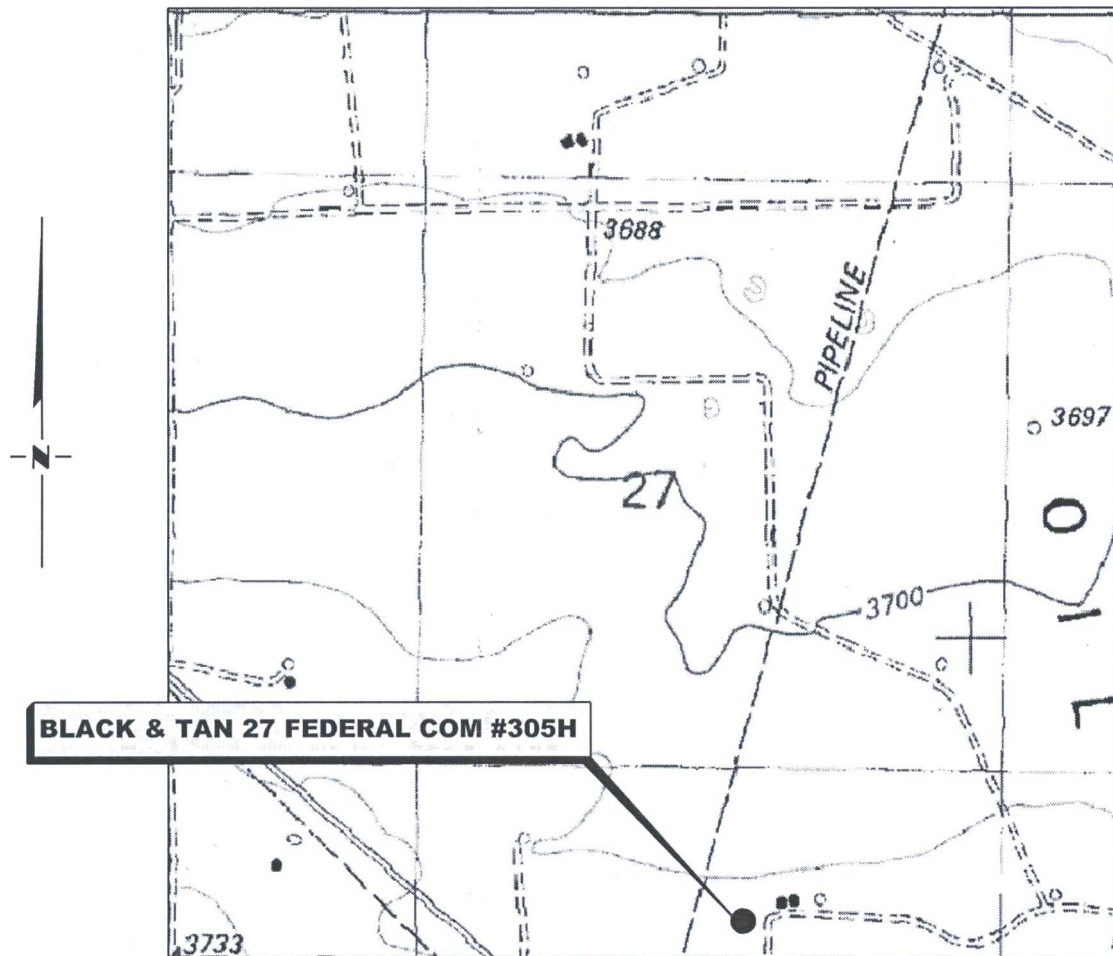
NO.	REVISION	DATE
JOB NO.:	LS1702125	
DWG. NO.:	1702125FUT	

RRC

308 W. BROADWAY ST., HOBBS, NM 88240 (575) 964-8200

SCALE: 1" = 100'
DATE: 2-21-2017
SURVEYED BY: JM/HD
DRAWN BY: LPS
APPROVED BY: RMH
SHEET: 1 OF 1

# LOCATION VERIFICATION MAP



*SECTION 27, TWP. 20 SOUTH, RGE. 34 EAST,  
N. M. P. M., LEA CO., NEW MEXICO*

OPERATOR: Apache Corporation  
LEASE: Black & Tan 27 Federal Com  
WELL NO.: 305H  
ELEVATION: 3714'

LOCATION: 215' FSL & 3180' FWL  
CONTOUR INTERVAL: 10'  
USGS TOPO. SOURCE MAP:  
Lea, NM (1984)

Firm No.: TX 10193838 NM 4655451

Copyright 2016 - All Rights Reserved

NO.	REVISION	DATE
JOB NO.:	LS1702125	
DWG. NO.:	1702125LVM	

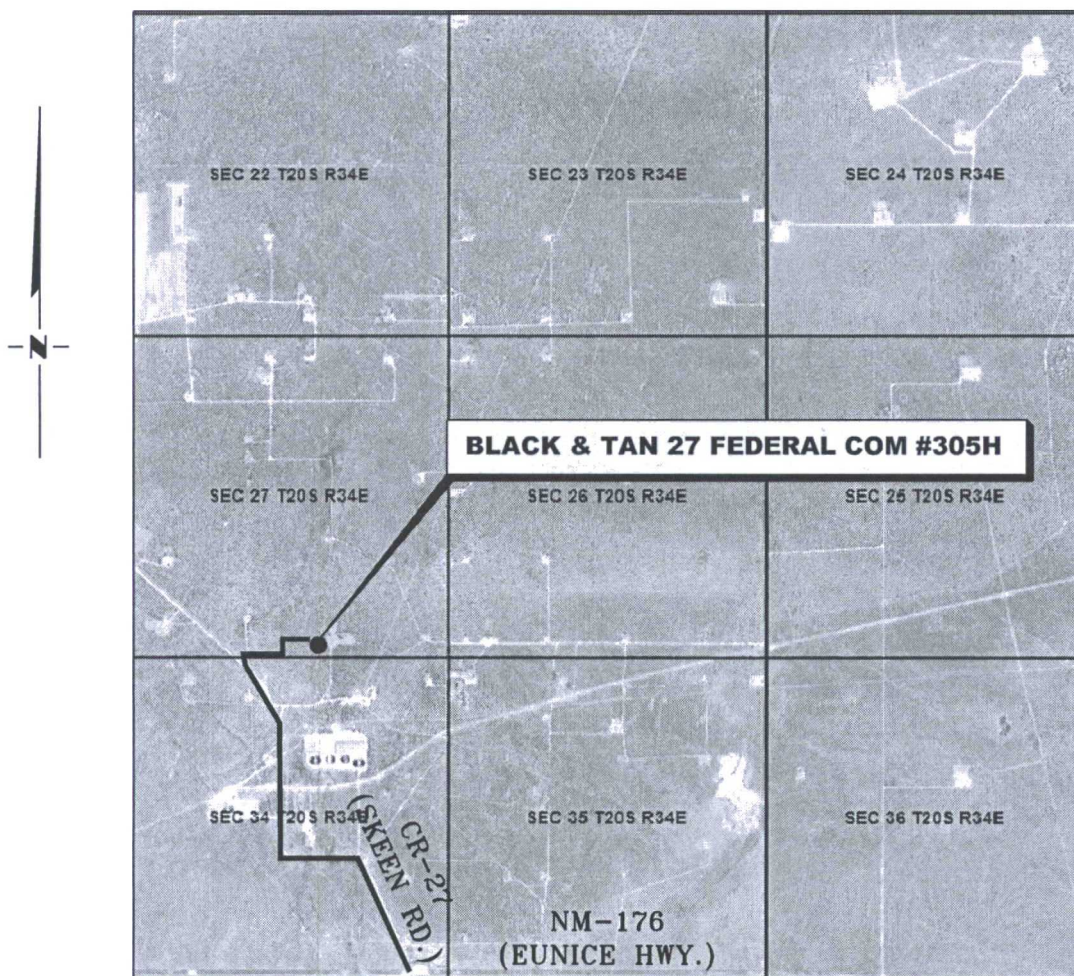
# RRC

308 W. BROADWAY ST., HOBBS, NM 88240 (575) 964-8200

SCALE: 1" = 1000'  
DATE: 2-21-2017  
SURVEYED BY: JM/HD  
DRAWN BY: LPS  
APPROVED BY: RMH  
SHEET: 1 OF 1

# VICINITY MAP

NOT TO SCALE



*SECTION 27, TWP. 20 SOUTH, RGE. 34 EAST,  
N. M. P. M., LEA CO., NEW MEXICO*

OPERATOR: Apache Corporation  
LEASE: Black & Tan 27 Federal Com  
WELL NO.: 305H

LOCATION: 215' FSL & 3180' FWL  
ELEVATION: 3714'

Firm No.: TX 10193838 NM 4655451

Copyright 2016 - All Rights Reserved

NO.	REVISION	DATE
JOB NO.: LS1702125		
DWG. NO.: 1702125VM		

# RRC

308 W. BROADWAY ST., HOBBS, NM 88240 (575) 964-8200

SCALE: N. T. S.
DATE: 2-21-2017
SURVEYED BY: JM/HD
DRAWN BY: LPS
APPROVED BY: RMH
SHEET: 1 OF 1