

District I
1625 N. French Dr., Hobbs, NM 88240
Phone: (575) 393-6161 Fax: (575) 393-0720
District II
811 S. First St., Artesia, NM 88210
Phone: (575) 748-1283 Fax: (575) 748-9720
District III
1000 Rio Brazos Road, Aztec, NM 87410
Phone: (505) 334-6178 Fax: (505) 334-6170
District IV
1220 S. St. Francis Dr., Santa Fe, NM 87505
Phone: (505) 476-3460 Fax: (505) 476-3462

State of New Mexico
Energy, Minerals & Natural Resources Department
OIL CONSERVATION DIVISION
1220 South St. Francis Dr.
Santa Fe, NM 87505

HOBBS OCD
SEP 08 2017
RECEIVED

Form C-102
Revised August 1, 2011
Submit one copy to appropriate
District Office

☐ AMENDED REPORT

WELL LOCATION AND ACREAGE DEDICATION PLAT

¹ API Number 30-015-43988		² Pool Code 37580		³ Pool Name LEA; BONE SPRING, S.					
⁴ Property Code 319564		⁵ Property Name BLACK & TAN 27 FEDERAL COM						⁶ Well Number 306H	
⁷ OGRID NO. 873		⁸ Operator Name APACHE CORPORATION						⁹ Elevation 3715'	
¹⁰ Surface Location									
UL or lot no. 0	Section 27	Township 20S	Range 34E	Lot Idn	Feet from the 215	North/South line SOUTH	Feet From the 2072	East/West line EAST	County LEA
¹¹ Bottom Hole Location If Different From Surface									
UL or lot no. B	Section 27	Township 20S	Range 34E	Lot Idn	Feet from the 280	North/South line NORTH	Feet from the 1670	East/West line EAST	County LEA
¹² Dedicated Acres 160		¹³ Joint or Infill		¹⁴ Consolidation Code		¹⁵ Order No.			

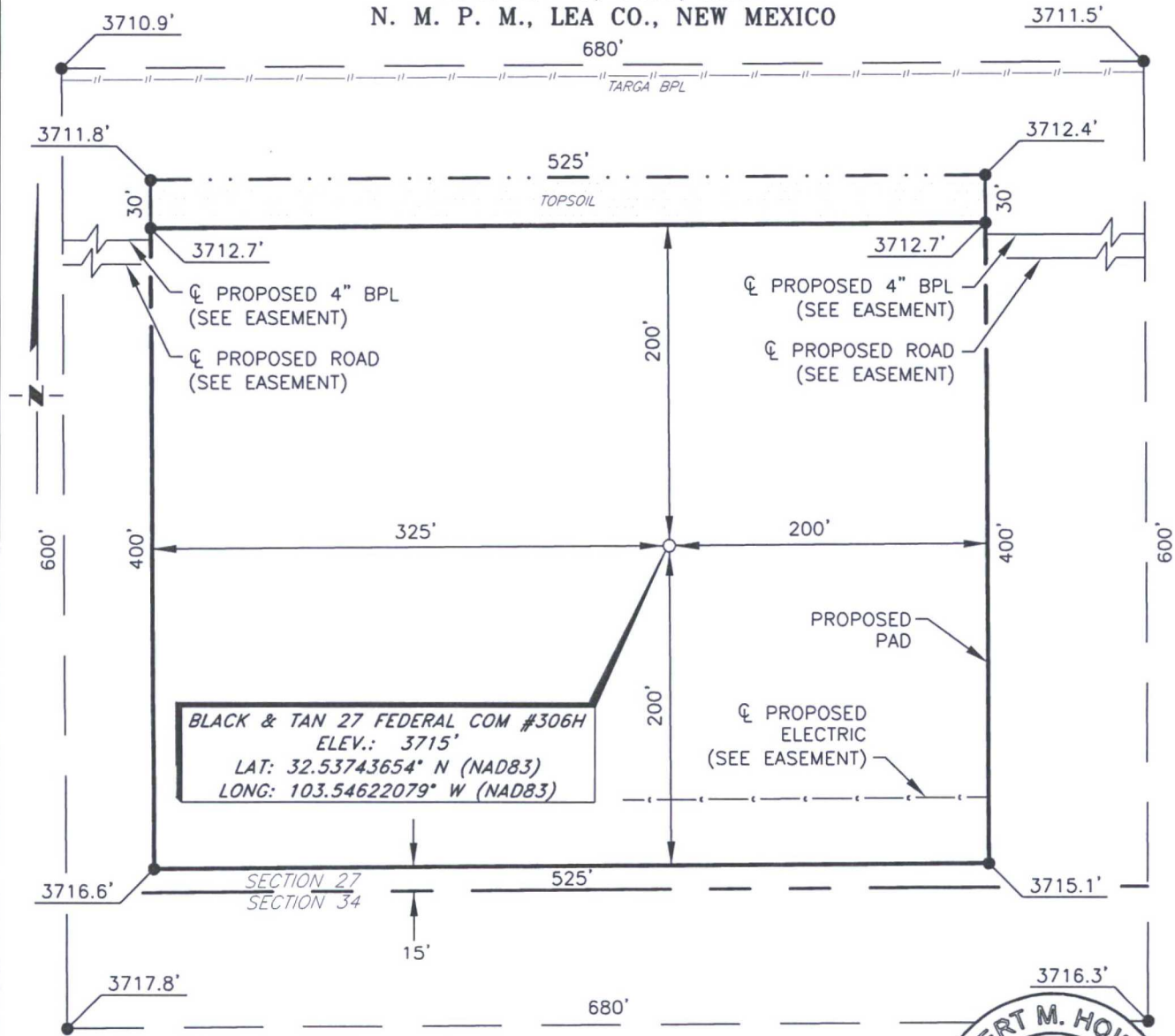
No allowable will be assigned to this completion until all interest have been consolidated or a non-standard unit has been approved by the division.

<p>¹⁶ GEODETIC DATA NAD 83 GRID - NM EAST SURFACE LOCATION (SL) N: 560146.3 - E: 783902.3 LAT: 32.53743654°N - LONG: 103.54622079°W</p> <p>PENETRATION POINT (PP @ BONE SPRING) N: 560146.3 - E: 783902.3 LAT: 32.53743654°N - LONG: 103.54622079°W MD = 8,578', TVD = 8,578'</p> <p>KICK OFF POINT (KOP) N: 560146.3 - E: 783902.3 LAT: 32.53743654°N - LONG: 103.54622079°W MD = 10,450.03', TVD = 10,450.03'</p> <p>LAST TAKE POINT (LTP) N: 564886.8 - E: 784267.2 LAT: 32.55045846°N - LONG: 103.54492288°W MD = 15,708.94', TVD = 10,985.87'</p> <p>BOTTOM HOLE/EXIT POINT (BH/EP) N: 564936.8 - E: 784266.8 LAT: 32.55059605°N - LONG: 103.54492285°W MD = 15,758.95', TVD = 10,985'</p>		<p>DETAIL "A"</p>		<p>17 OPERATOR CERTIFICATION I hereby certify that the information contained herein is true and complete to the best of my knowledge and belief, and that this organization either owns a working interest or unleased mineral interest in the land including the proposed bottom hole location or has a right to drill this well at this location pursuant to a contract with an owner of such a mineral or working interest, or to a voluntary pooling agreement or a compulsory pooling order heretofore entered by the division.</p> <p><i>Sorina L Flores</i> 4/17/2017 Signature Date SORINA L. FLORES Printed Name sorina.flores@apachecorp.com E-mail Address</p>	
<p>CORNER DATA NAD 83 GRID - NM EAST A: FOUND BRASS CAP "1912" N 559906.6 - E 780684.6 B: FOUND BRASS CAP "1912" N 562546.2 - E 780666.1 C: FOUND BRASS CAP ILLEGABLE N 565185.2 - E 780647.6 D: FOUND BRASS CAP "1912" N 565208.2 - E 783290.2 E: FOUND BRASS CAP "1912" N 565231.3 - E 785934.3 F: FOUND BRASS CAP "1912" N 562589.8 - E 785953.8 G: FOUND 1/2" REBAR N 559946.7 - E 785975.6 H: FOUND BRASS CAP "1912" N 559927.1 - E 783330.5 1: CALCULATED POINT N 559916.8 - E 782007.5 2: CALCULATED POINT N 565196.7 - E 781968.9</p>		<p>40 Ac.</p> <p>40 Ac.</p> <p>40 Ac.</p> <p>SEE DETAIL "A"</p>		<p>18 SURVEYOR CERTIFICATION I hereby certify that the well location shown on this plat was plotted from field notes of actual surveys made by me or under my supervision, and that the same is true and correct to the best of my belief.</p> <p>2-27-2017 Date of Survey Signature and Seal of Professional Surveyor 19680 Certificate Number</p>	

RRC-Job No.: LS1702126

**APACHE CORPORATION
BLACK & TAN 27 FEDERAL COM #306H**

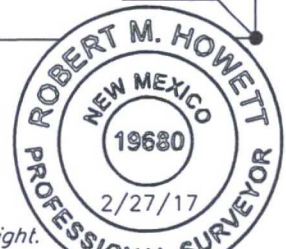
**SECTION 27, T20S, R34E
N. M. P. M., LEA CO., NEW MEXICO**



DIRECTIONS TO LOCATION

SCALE: 1" = 100'
 0 50 100
 BEARINGS ARE
 NAD 83 GRID - NM EAST
 DISTANCES ARE
 GROUND.

From the intersection of N.M. Hwy. 176 and CR-27 (Skeen Rd.)
 Go Northwest on CR-27 approx. 0.4 miles to a curve to the left;
 Turn left and go West approx. 0.3 miles to a curve to the right;
 Take curve to the right and go North approx. 0.6 miles to lease
 road on the right;
 Turn right and go North approx. 0.1 miles location 200 feet on the right.



Firm No.: TX 10193838 NM 4655451

Copyright 2016 - All Rights Reserved

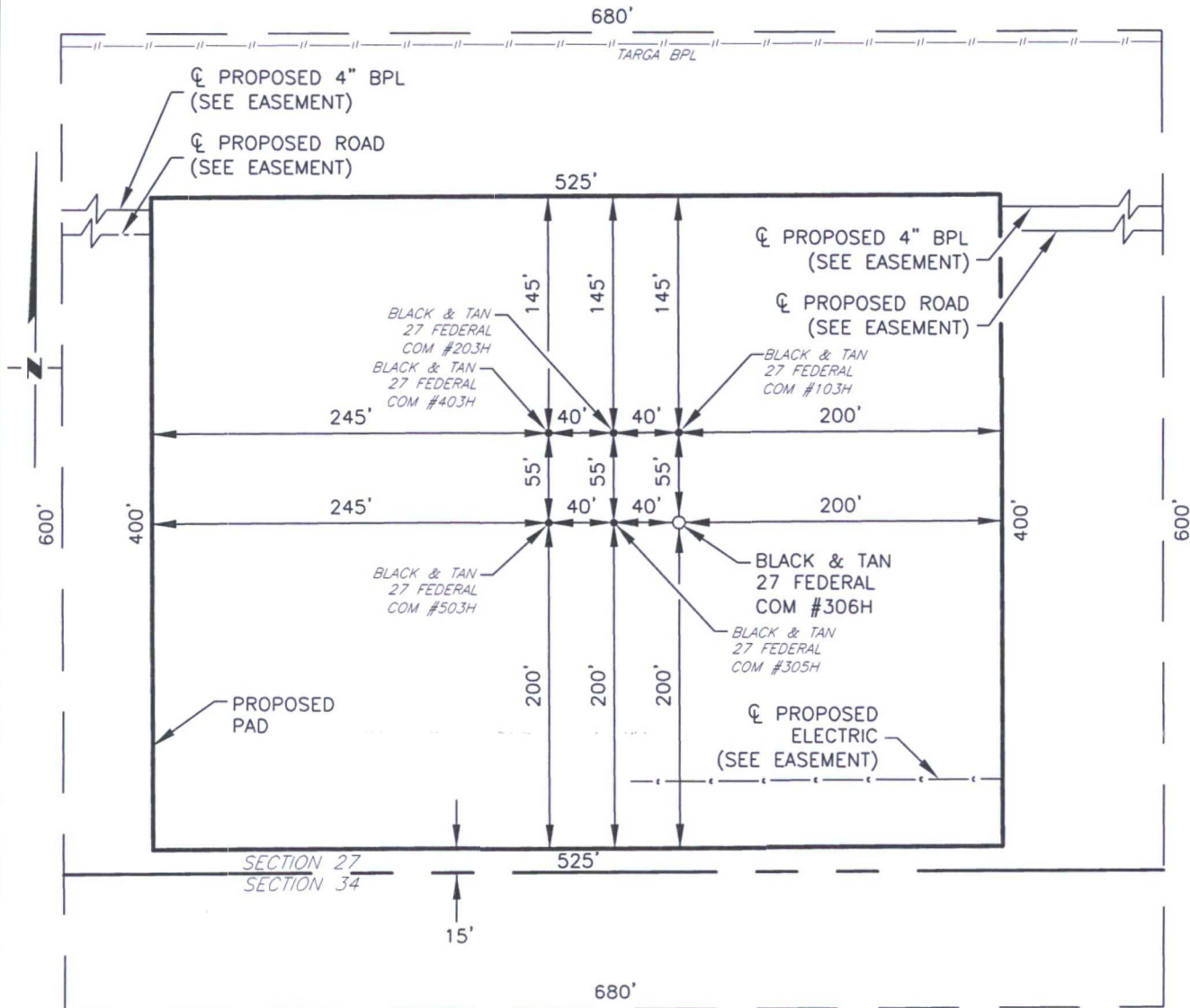
NO.	REVISION	DATE
JOB NO.:	LS1702126	
DWG. NO.:	1702126PAD	

RRC

308 W. BROADWAY ST., HOBBS, NM 88240 (575) 964-8200

SCALE: 1" = 100'
DATE: 2-21-2017
SURVEYED BY: JM/HD
DRAWN BY: LPS
APPROVED BY: RMH
SHEET: 1 OF 1

**APACHE CORPORATION
BLACK & TAN 27 FEDERAL COM
FUTURE PAD DEVELOPMENT
SECTION 27, T20S, R34E
N. M. P. M., LEA CO., NEW MEXICO**



SCALE: 1" = 100'
0 50 100
BEARINGS ARE
NAD 27 GRID - NM EAST
DISTANCES ARE
GROUND.

Firm No.: TX 10193838 NM 4655451

Copyright 2016 - All Rights Reserved

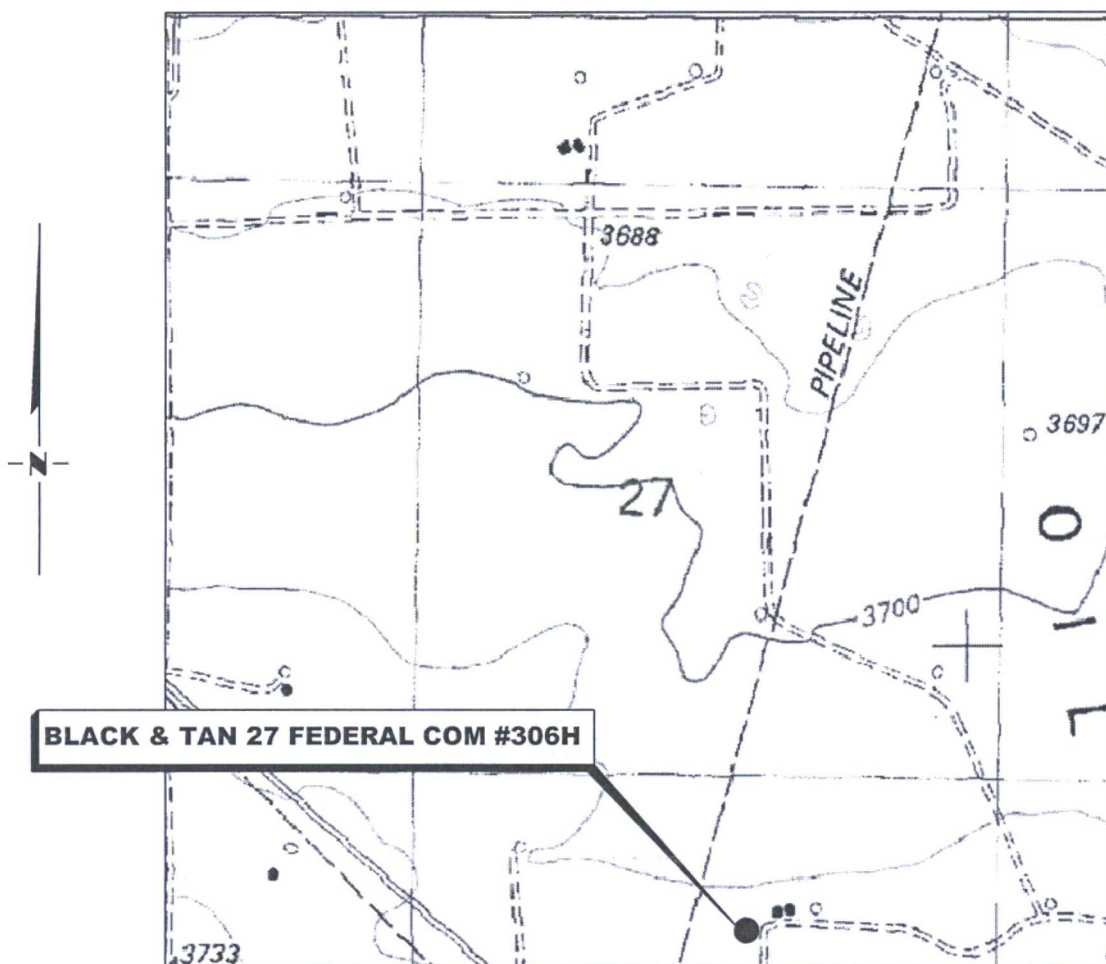
NO.	REVISION	DATE
JOB NO.:	LS1702126	
DWG. NO.:	1702126FUT	

RRC

308 W. BROADWAY ST., HOBBS, NM 88240 (575) 964-8200

SCALE: 1" = 100'
DATE: 2-21-2017
SURVEYED BY: JM/HD
DRAWN BY: LPS
APPROVED BY: RMH
SHEET: 1 OF 1

LOCATION VERIFICATION MAP



*SECTION 27, TWP. 20 SOUTH, RGE. 34 EAST,
N. M. P. M., LEA CO., NEW MEXICO*

OPERATOR: Apache Corporation
LEASE: Black & Tan 27 Federal Com
WELL NO.: 306H
ELEVATION: 3715'

LOCATION: 215' FSL & 3220' FWL
CONTOUR INTERVAL: 10'
USGS TOPO. SOURCE MAP:
Lea, NM (1984)

Firm No.: TX 10193838 NM 4655451

Copyright 2016 - All Rights Reserved

NO.	REVISION	DATE
JOB NO.:	LS1702126	
DWG. NO.:	1702126LVM	

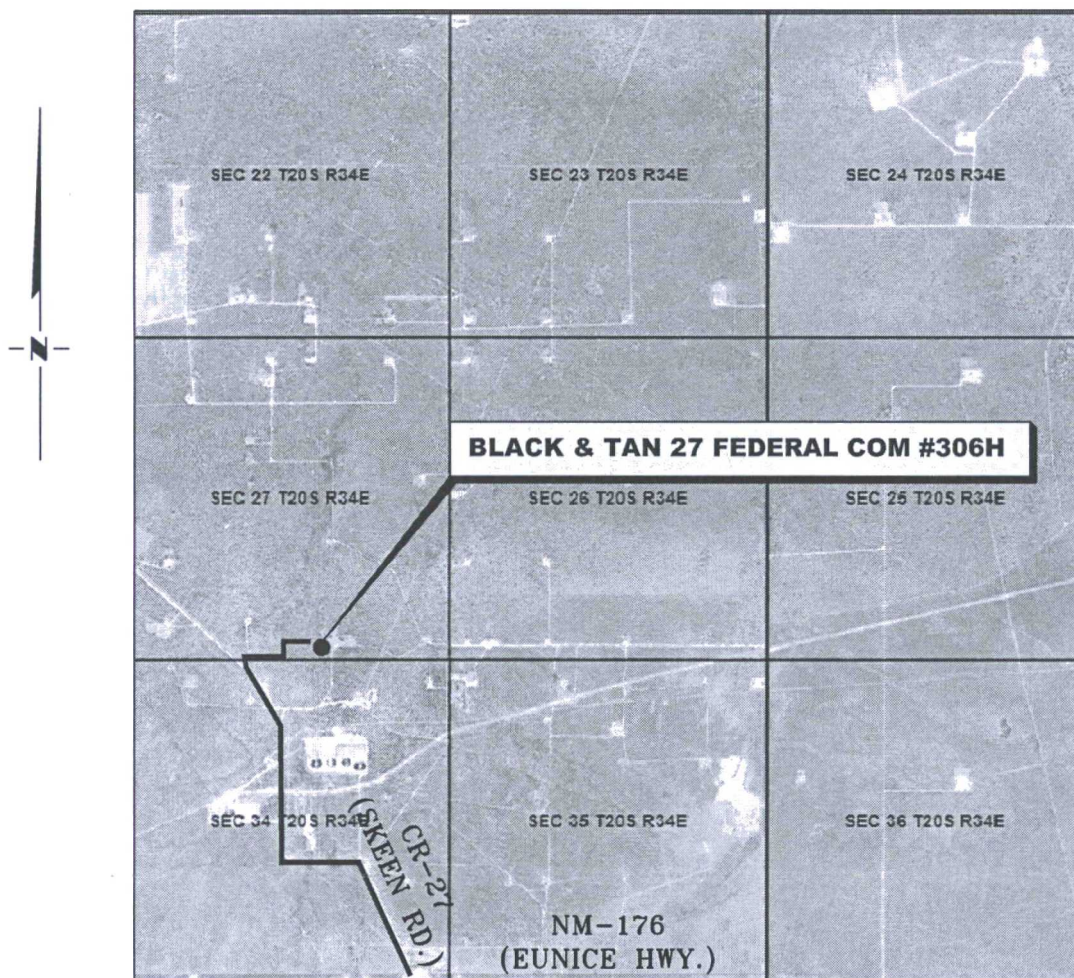
RRC

308 W. BROADWAY ST., HOBBS, NM 88240 (575) 964-8200

SCALE: 1" = 1000'
DATE: 2-21-2017
SURVEYED BY: JM/HD
DRAWN BY: LPS
APPROVED BY: RMH
SHEET: 1 OF 1

VICINITY MAP

NOT TO SCALE



*SECTION 27, TWP. 20 SOUTH, RGE. 34 EAST,
N. M. P. M., LEA CO., NEW MEXICO*

OPERATOR: Apache Corporation
LEASE: Black & Tan 27 Federal Com
WELL NO.: 306H

LOCATION: 215' FSL & 3220' FWL
ELEVATION: 3715'

Firm No.: TX 10193838 NM 4655451

Copyright 2016 - All Rights Reserved

NO.	REVISION	DATE
JOB NO.: LS1702126		
DWG. NO.: 1702126VM		

RRC

308 W. BROADWAY ST., HOBBS, NM 88240 (575) 964-8200

SCALE: N. T. S.
DATE: 2-21-2017
SURVEYED BY: JM/HD
DRAWN BY: LPS
APPROVED BY: RMH
SHEET: 1 OF 1