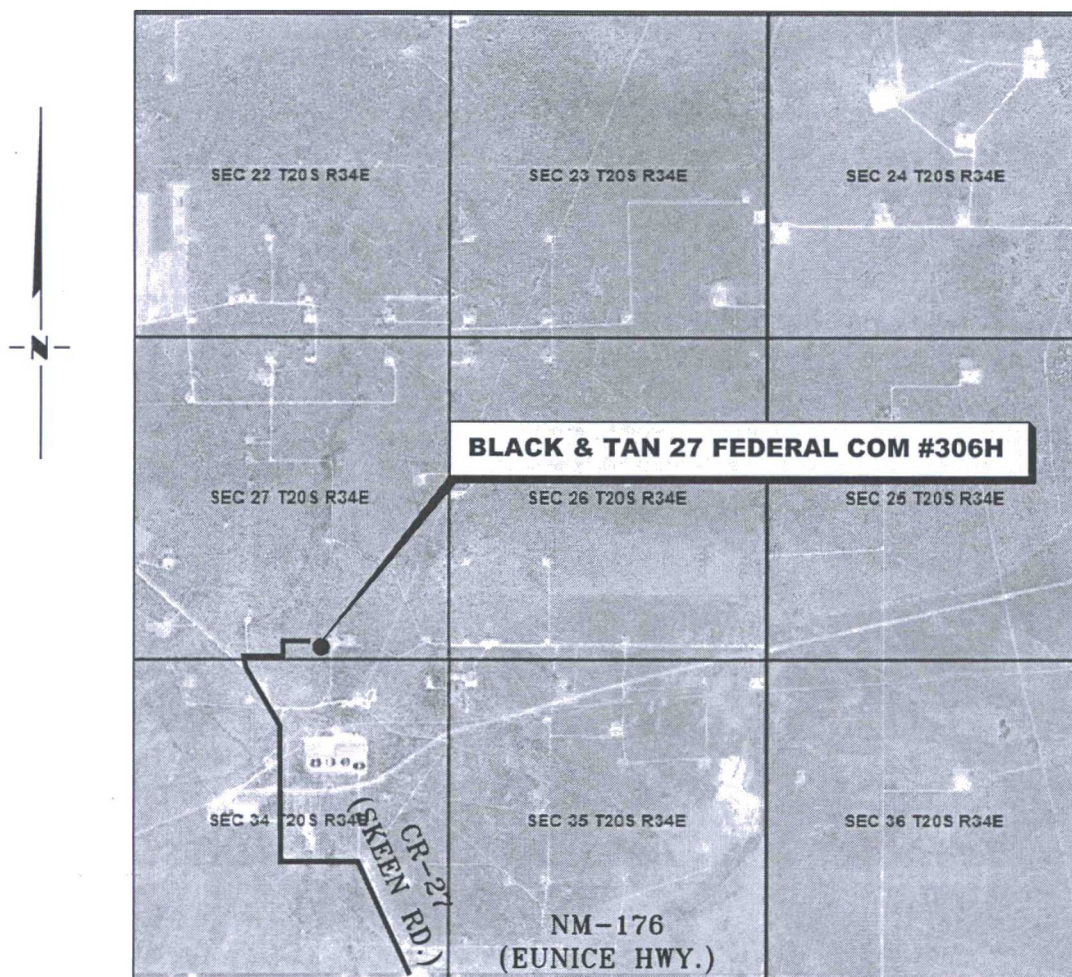


VICINITY MAP

NOT TO SCALE



*SECTION 27, TWP. 20 SOUTH, RGE. 34 EAST,
N. M. P. M., LEA CO., NEW MEXICO*

OPERATOR: Apache Corporation
LEASE: Black & Tan 27 Federal Com
WELL NO.: 306H

LOCATION: 215' FSL & 3220' FWL
ELEVATION: 3715'

Firm No.: TX 10193838 NM 4655451

Copyright 2016 - All Rights Reserved

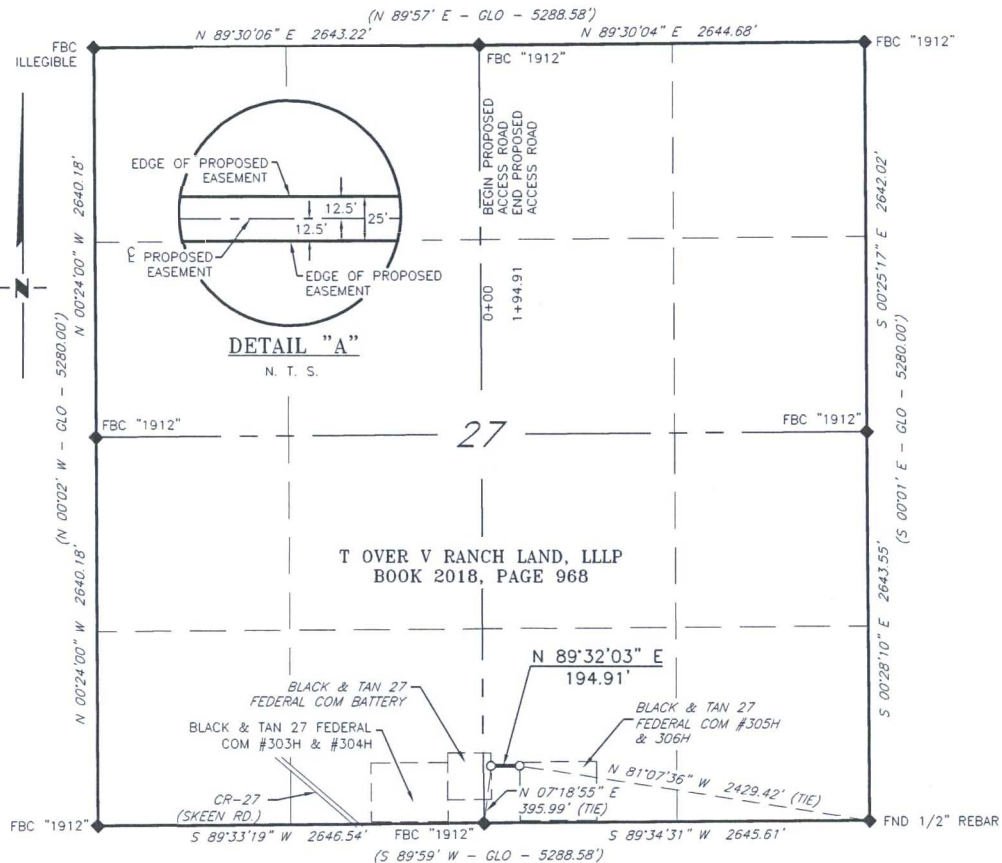
NO.	REVISION	DATE
JOB NO.: LS1702126		
DWG. NO.: 1702126VM		

RRC

308 W. BROADWAY ST., HOBBS, NM 88240 (575) 964-8200

SCALE: N. T. S.
DATE: 2-21-2017
SURVEYED BY: JM/HD
DRAWN BY: LPS
APPROVED BY: RMH
SHEET: 1 OF 1

APACHE CORPORATION
PROPOSED ACCESS ROAD FOR
THE BLACK & TAN 27 FEDERAL COM #305H & #306H
SECTION 27, T20S, R34E,
N. M. P. M., LEA CO., NEW MEXICO



DESCRIPTION

A strip of land 25 feet wide, being 194.91 feet or 11.813 rods in length, lying in Section 27, Township 20 South, Range 34 East, N. M. P. M., Lea County, New Mexico, being 12.5 feet left and 12.5 feet right of the following described survey of centerline across the lands of T Over V Ranch Land, LLLP, according to a deed filed for record in Book 2018, Page 968, of the Deed Records of Lea County, New Mexico;

BEGINNING at Engr. Sta. 0+00, a point in the Southeast quarter of Section 27, which bears N 07°18'55" E, 395.99 feet from a brass cap, stamped "1912", found for the South quarter corner of Section 27;

Thence N 89°32'03" E, 194.91 feet, to Engr. Sta. 1+94.91, the End of Survey, a point in the Southeast quarter of Section 27, which bears N 81°07'36" W, 2,429.42 feet, from a 1/2" rebar, found for the Southeast corner of Section 27.

Said strip of land contains 0.112 acres, more or less, and is allocated by forties as follows::

SW 1/4 SE 1/4 11.813 Rods 0.112 Acres

SCALE: 1" = 1000'
0 500 1000

BEARINGS ARE GRID NAD 27
NM EAST
DISTANCES ARE HORIZ. GROUND.

LEGEND

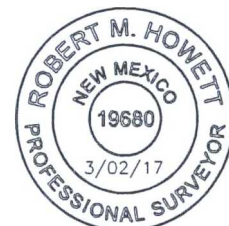
() RECORD DATA - GLO

◆ FOUND MONUMENT
AS NOTED

— PROPOSED ACCESS ROAD

I, R. M. Howett, a N. M. Professional Surveyor, hereby certify that I prepared this plat from an actual survey made on the ground under my direct supervision, said survey and plat meet the Min. Stds. for Land Surveying in the State of N. M. and are true and correct to the best of my knowledge and belief.

Robert M. Howett
Robert M. Howett NM PS 19680



Firm No.: TX 10193838 NM 4655451

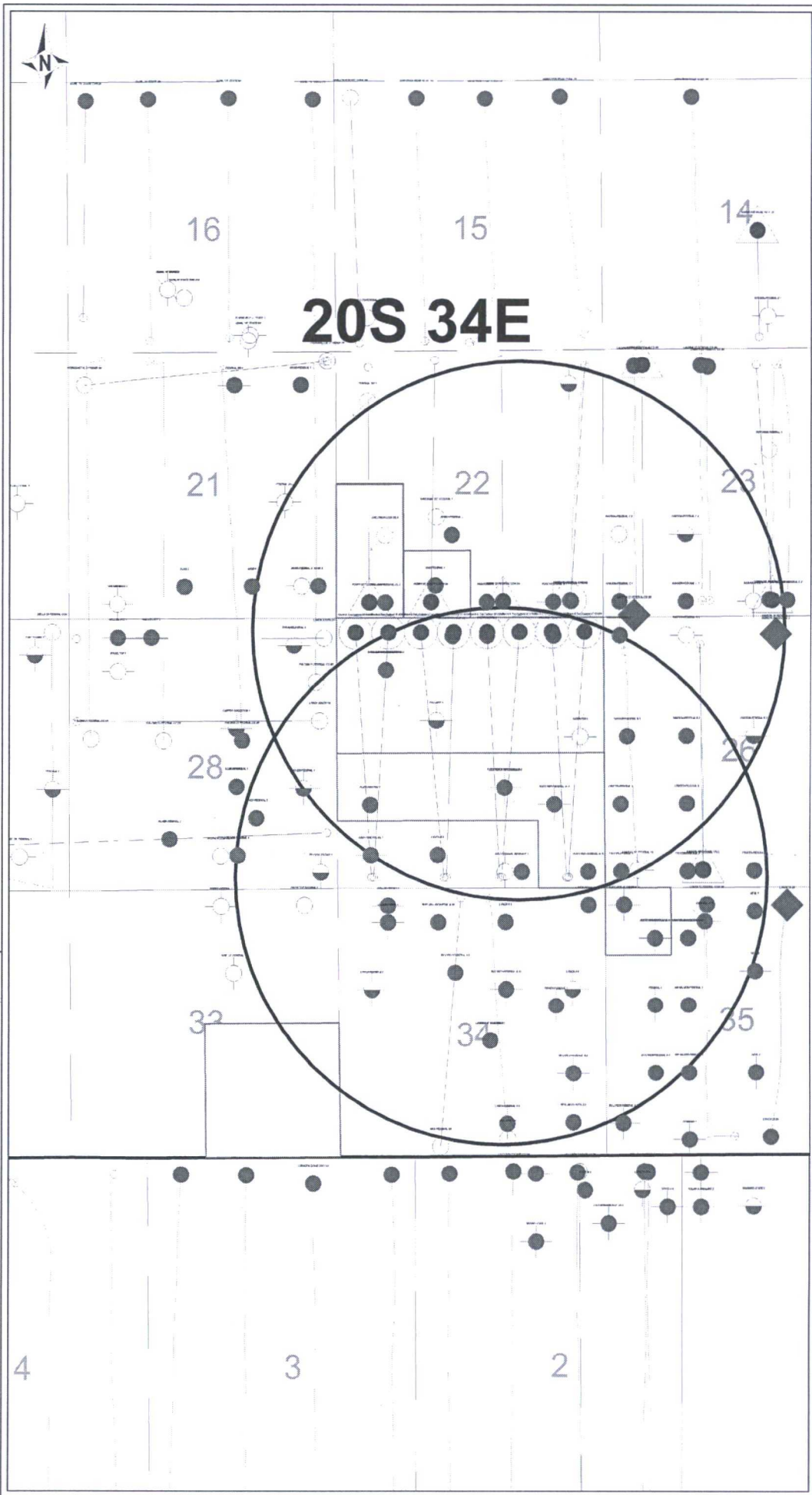
Copyright 2016 - All Rights Reserved

NO.	REVISION	DATE
JOB NO.:	LS1702125	
DWG. NO.:	1702125RD1	

RRC

308 W. BROADWAY ST., HOBBS, NM 88240 (575) 964-8200

SCALE: 1" = 1000'
DATE: 2-21-2017
SURVEYED BY: JM/HD
DRAWN BY: LPS
APPROVED BY: RMH
SHEET: 1 OF 1



Apache Corporation

Black & Tan Federal 27 306H



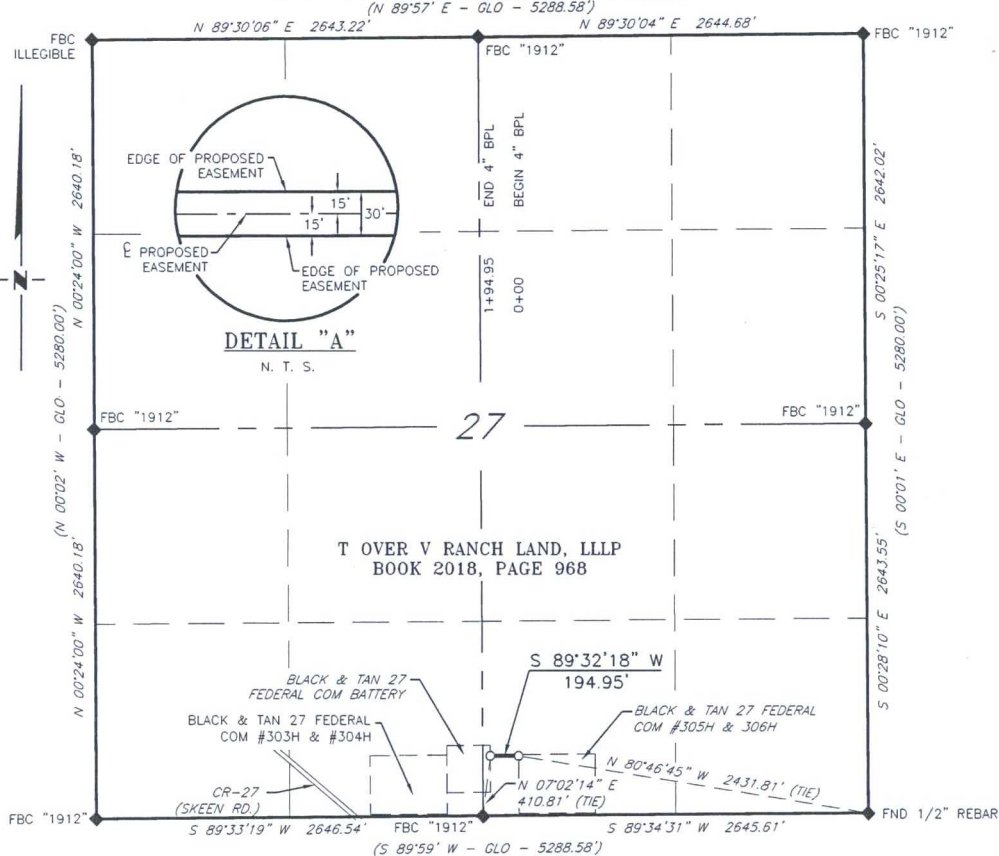
POSTED WELL DATA
Well Label

WELL SYMBOLS

- Dry Hole, With Show of Oil & Gas
- Dry Hole, With Show of Oil
- Dry Hole
- Gas Well
- Location
- Oil Well
- Active Producer
- T & A' D
- ◆ Pilot Hole
- P&A Oil
- Proposed Location
- Permitted Location

April 3, 2017

APACHE CORPORATION
PROPOSED 4" BURIED POLY PIPELINE
FROM THE BLACK & TAN 27 FEDERAL COM #305H & #306H
TO THE BLACK & TAN 27 BATTERY
SECTION 27, T20S, R34E,
N. M. P. M., LEA CO., NEW MEXICO



DESCRIPTION

A strip of land 30 feet wide, being 194.95 feet or 11.815 rods in length, lying in Section 27, Township 20 South, Range 34 East, N. M. P. M., Lea County, New Mexico, being 15 feet left and 15 feet right of the following described survey of centerline across the lands of T Over V Ranch Land, LLLP, according to a deed filed for record in Book 2018, Page 968, of the Deed Records of Lea County, New Mexico;

BEGINNING at Engr. Sta. 0+00, a point in the Southeast quarter of Section 27, which bears N 80°46'45" W, 2,431.81 feet, from a 1/2" rebar, found for the Southeast corner of Section 27 ;

Thence S 89°32'18" W, 194.95 feet, to Engr. Sta. 1+94.95, the End of Survey, a point in the Southeast quarter of Section 27, which bears N 07°02'14" E, 410.81 feet from a brass cap, stamped "1912", found for the South quarter corner of Section 27.

Said strip of land contains 0.134 acres, more or less, and is allocated by forties as follows::

SW 1/4 SE 1/4 11.813 Rods 0.134 Acres

SCALE: 1" = 1000'
0 500 1000

BEARINGS ARE GRID NAD 27
NM EAST
DISTANCES ARE HORIZ. GROUND.

LEGEND

- () RECORD DATA - GLO
- ◆ FOUND MONUMENT AS NOTED
- PROPOSED 4" BURIED POLY PIPELINE

I, R. M. Howett, a N. M. Professional Surveyor, hereby certify that I prepared this plat from an actual survey made on the ground under my direct supervision, said survey and plat meet the Min. Stds. for Land Surveying in the State of N. M. and are true and correct to the best of my knowledge and belief.

Robert M. Howett
Robert M. Howett NM PS 19680



Firm No.: TX 10193838 NM 4655451

Copyright 2016 - All Rights Reserved

NO.	REVISION	DATE
JOB NO.:	LS1702125	
DWG. NO.:	1702125PL1	



308 W. BROADWAY ST., HOBBS, NM 88240 (575) 964-8200

SCALE: 1" = 1000'
DATE: 2-21-2017
SURVEYED BY: JM/HD
DRAWN BY: LPS
APPROVED BY: RMH
SHEET: 1 OF 1

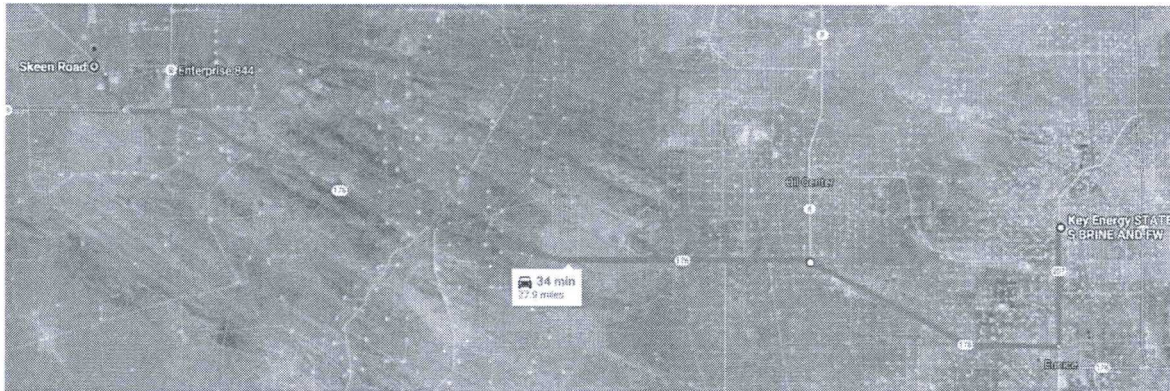
Black and Tan 27 Federal COM

Brine Water Sources

Source:

Key Energy State S Brine & FW Station

32.484070, -103.158475



Key Energy STATE S BRINE AND FW

New Mexico 207, Eunice NM 88231

- ↑ Head south on NM-207 S toward Hill Rd
2.9 mi
- ↘ Turn right onto NM-176 W/Ave O
① Continue to follow NM-176 W
6.4 mi
- ↙ Turn left to stay on NM-176 W
17.1 mi
- ↘ Turn right onto Skeen Rd
1.1 mi
- ↙ Turn left
0.4 mi

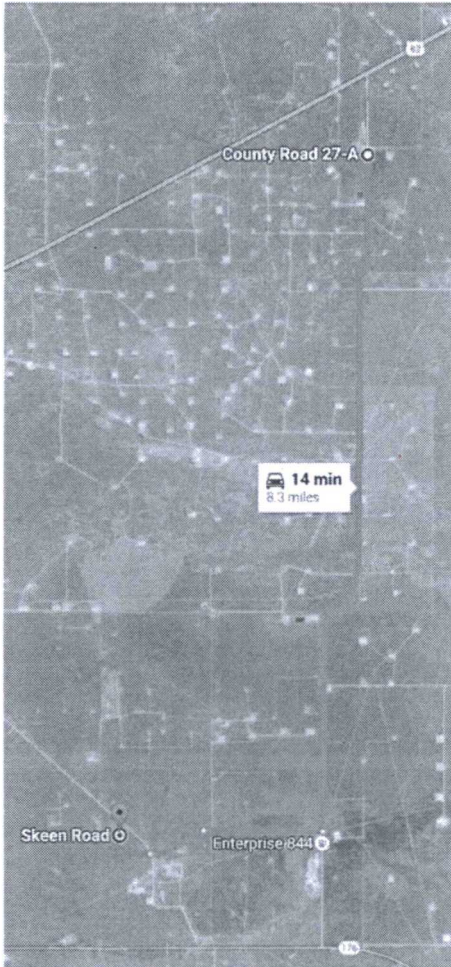
Black and Tan 27 Federal COM

Fresh Water Sources

Source:

Marathon Road Water Station

32.625672, -103.515428



↑ Head south on County Rd 27-A

6.2 mi

↘ Turn right

1.1 mi

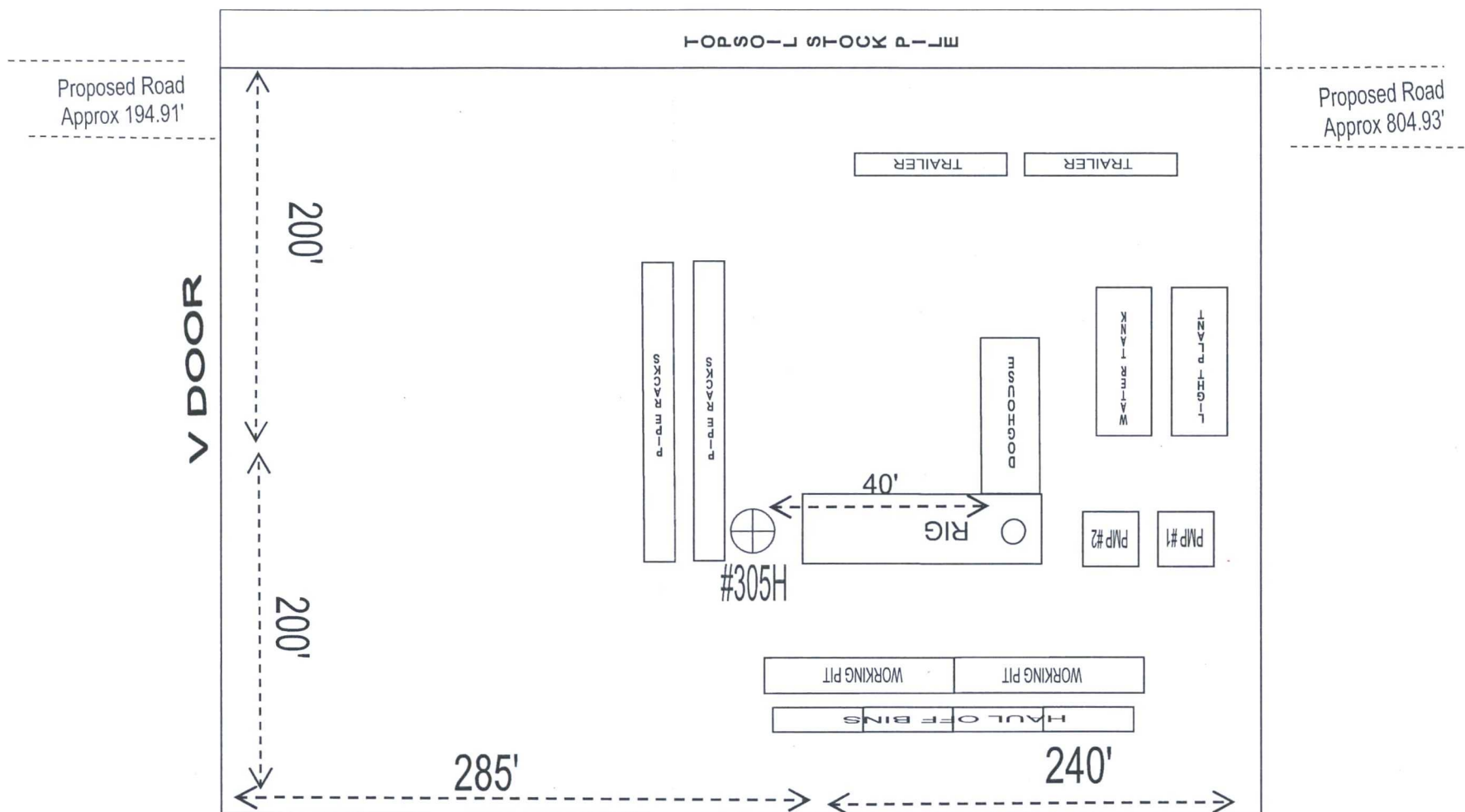
↙ Slight left

0.7 mi

↑ Continue straight

0.4 mi

RIG ORIENTATION & LAYOUT BLACK & TAN 27 FEDERAL COM 306H



PRIVATE SURFACE OWNER AGREEMENT

OPERATOR: APACHE CORPORATION

WELL NAME: BLACK AND TAN 27 FEDERAL COM #306H

SECTION: 27 TOWNSHIP: 20S RANGE: 34E

LOCATION: SHL: 215' FSL & 2072' FEL COUNTY: LEA STATE: NM
BHL: 280' FNL & 1670' FEL

LEASE NUMBER: SHL: NMNM-060393 BHL: NMNM-082

STATEMENT OF SURFACE USE

The surface to the subject land is owned by T over V Ranch
c/o DANN BERRY
PO BOX 160
EUNICE, NM 88231 575-369-5266

The surface owner has been contacted regarding the drilling of the subject well, and an agreement for surface use has been negotiated.

CERTIFICATION: I hereby certify that the statements made in this statement are to the best of my knowledge, true and correct.

NAME: DEAN JARRETT

SIGNATURE: 

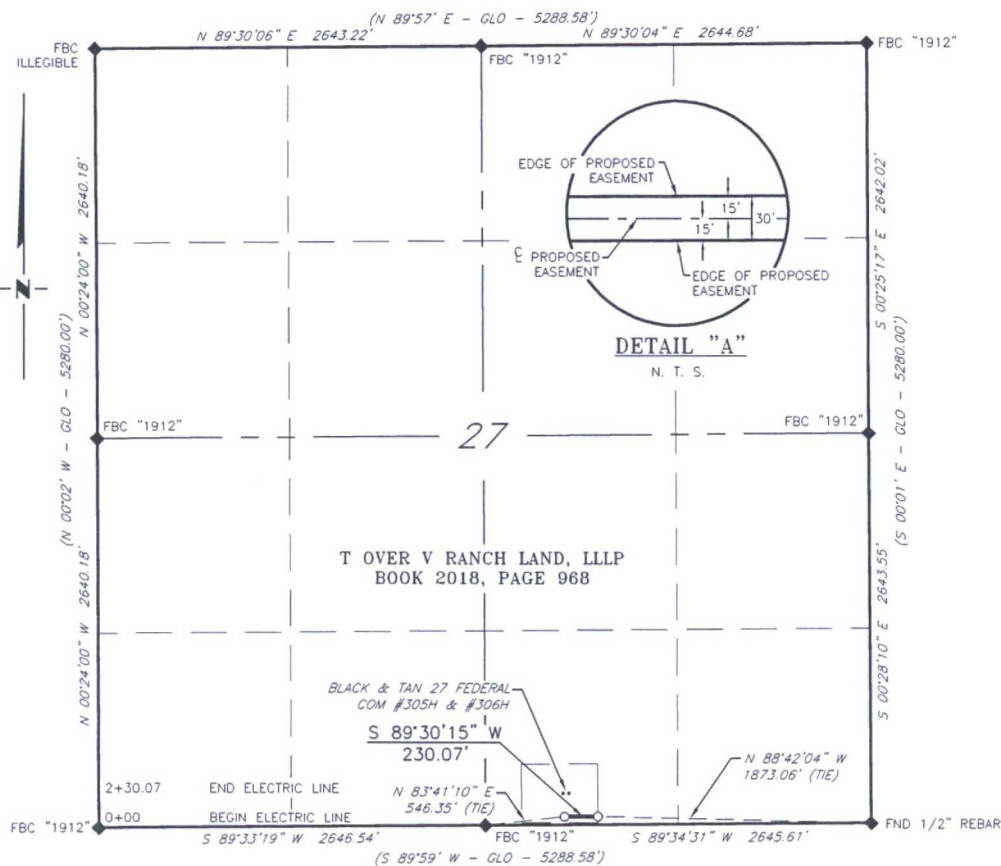
DATE: 4-13-17

TITLE: SR. SURFACE LANDMAN

To expedite your Application to Drill please fax the completed form to the
Bureau of Land Management (575) 234-5927 or (575) 885-9264
Attn: Legal Instruments Examiner
620 E. Green Street
Carlsbad, NM 88220

The original document with signature should be mailed as soon as possible.

APACHE CORPORATION
PROPOSED ELECTRIC LINE FOR
THE BLACK & TAN 27 FEDERAL COM #305H & #306H
SECTION 27, T20S, R34E,
N. M. P. M., LEA CO., NEW MEXICO



DESCRIPTION

A strip of land 30 feet wide, being 230.07 feet or 13.944 rods in length, lying in Section 27, Township 20 South, Range 34 East, N. M. P. M., Lea County, New Mexico, being 15 feet left and 15 feet right of the following described survey of centerline across the lands of T over V Ranch Land, LLLP., according to a deed filed for record in Book 2018, Page 968, of the deed records of Lea County, New Mexico:

BEGINNING at Engr. Sta. 0+00, a point in the Southeast quarter of Section 27, which bears N 88°42'04\" W, 1,873.06 feet from a 1/2\" rebar, found for the Southeast corner of Section 27;

Thence S 89°30'15\" W, 230.07 feet, to Engr. Sta. 2+30.07, the End of Survey, a point in the Southeast quarter of Section 27, which bears N 83°41'10\" E, 546.35 feet from a brass cap, stamped \"1912\", found for the South quarter corner of Section 27.

Said strip of land contains 0.158 acres, more or less, and is allocated by forties as follows::

SW 1/4 SE 1/4 13.944 Rods 0.158 Acres

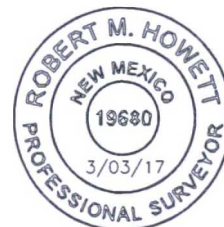
SCALE: 1\" = 1000'
0 500 1000

BEARINGS ARE GRID NAD 27
NM EAST
DISTANCES ARE HORIZ. GROUND.

LEGEND
() RECORD DATA - GLO
◆ FOUND MONUMENT AS NOTED
— PROPOSED ELECTRIC LINE

I, R. M. Howett, a N. M. Professional Surveyor, hereby certify that I prepared this plat from an actual survey made on the ground under my direct supervision, said survey and plat meet the Min. Stds. for Land Surveying in the State of N. M. and are true and correct to the best of my knowledge and belief.

Robert M. Howett
Robert M. Howett NM PS 19680



Firm No.: TX 10193838 NM 4655451

Copyright 2016 - All Rights Reserved

1	NAME CHANGE	1/20/17
NO.	REVISION	DATE
JOB NO.:	LS1702125	
DWG. NO.:	1702125EL1	

RRC

308 W. BROADWAY ST., HOBBS, NM 88240 (575) 964-8200

SCALE: 1\" = 1000'
DATE: 2-21-2017
SURVEYED BY: JM/HD
DRAWN BY: LPS
APPROVED BY: RMH
SHEET: 1 OF 1



Section 1 - General

Would you like to address long-term produced water disposal? NO

Section 2 - Lined Pits

Would you like to utilize Lined Pit PWD options? NO

Produced Water Disposal (PWD) Location:

PWD surface owner:

PWD disturbance (acres):

Lined pit PWD on or off channel:

Lined pit PWD discharge volume (bbl/day):

Lined pit specifications:

Pit liner description:

Pit liner manufacturers information:

Precipitated solids disposal:

Describe precipitated solids disposal:

Precipitated solids disposal permit:

Lined pit precipitated solids disposal schedule:

Lined pit precipitated solids disposal schedule attachment:

Lined pit reclamation description:

Lined pit reclamation attachment:

Leak detection system description:

Leak detection system attachment:

Lined pit Monitor description:

Lined pit Monitor attachment:

Lined pit: do you have a reclamation bond for the pit?

Is the reclamation bond a rider under the BLM bond?

Lined pit bond number:

Lined pit bond amount:

Additional bond information attachment:

Section 3 - Unlined Pits

Would you like to utilize Unlined Pit PWD options? NO

Produced Water Disposal (PWD) Location:

PWD surface owner:

PWD disturbance (acres):

Unlined pit PWD on or off channel:

Unlined pit PWD discharge volume (bbl/day):

Unlined pit specifications:

Precipitated solids disposal:

Describe precipitated solids disposal:

Precipitated solids disposal permit:

Unlined pit precipitated solids disposal schedule:

Unlined pit precipitated solids disposal schedule attachment:

Unlined pit reclamation description:

Unlined pit reclamation attachment:

Unlined pit Monitor description:

Unlined pit Monitor attachment:

Do you propose to put the produced water to beneficial use?

Beneficial use user confirmation:

Estimated depth of the shallowest aquifer (feet):

Does the produced water have an annual average Total Dissolved Solids (TDS) concentration equal to or less than that of the existing water to be protected?

TDS lab results:

Geologic and hydrologic evidence:

State authorization:

Unlined Produced Water Pit Estimated percolation:

Unlined pit: do you have a reclamation bond for the pit?

Is the reclamation bond a rider under the BLM bond?

Unlined pit bond number:

Unlined pit bond amount:

Additional bond information attachment:

Section 4 - Injection

Would you like to utilize Injection PWD options? NO

Produced Water Disposal (PWD) Location:

PWD surface owner:

PWD disturbance (acres):

Injection PWD discharge volume (bbl/day):

Injection well mineral owner:

Injection well type:

Injection well number:

Assigned injection well API number?

Injection well new surface disturbance (acres):

Minerals protection information:

Mineral protection attachment:

Underground Injection Control (UIC) Permit?

UIC Permit attachment:

Injection well name:

Injection well API number:

Section 5 - Surface Discharge

Would you like to utilize Surface Discharge PWD options? NO

Produced Water Disposal (PWD) Location:

PWD surface owner:

PWD disturbance (acres):

Surface discharge PWD discharge volume (bbl/day):

Surface Discharge NPDES Permit?

Surface Discharge NPDES Permit attachment:

Surface Discharge site facilities information:

Surface discharge site facilities map:

Section 6 - Other

Would you like to utilize Other PWD options? NO

Produced Water Disposal (PWD) Location:

PWD surface owner:

PWD disturbance (acres):

Other PWD discharge volume (bbl/day):

Other PWD type description:

Other PWD type attachment:

Have other regulatory requirements been met?

Other regulatory requirements attachment:



U.S. Department of the Interior
BUREAU OF LAND MANAGEMENT

Bond Info Data Report

09/01/2017

Bond Information

Federal/Indian APD: FED

BLM Bond number: NMB000736

BIA Bond number:

Do you have a reclamation bond? NO

Is the reclamation bond a rider under the BLM bond?

Is the reclamation bond BLM or Forest Service?

BLM reclamation bond number:

Forest Service reclamation bond number:

Forest Service reclamation bond attachment:

Reclamation bond number:

Reclamation bond amount:

Reclamation bond rider amount:

Additional reclamation bond information attachment: