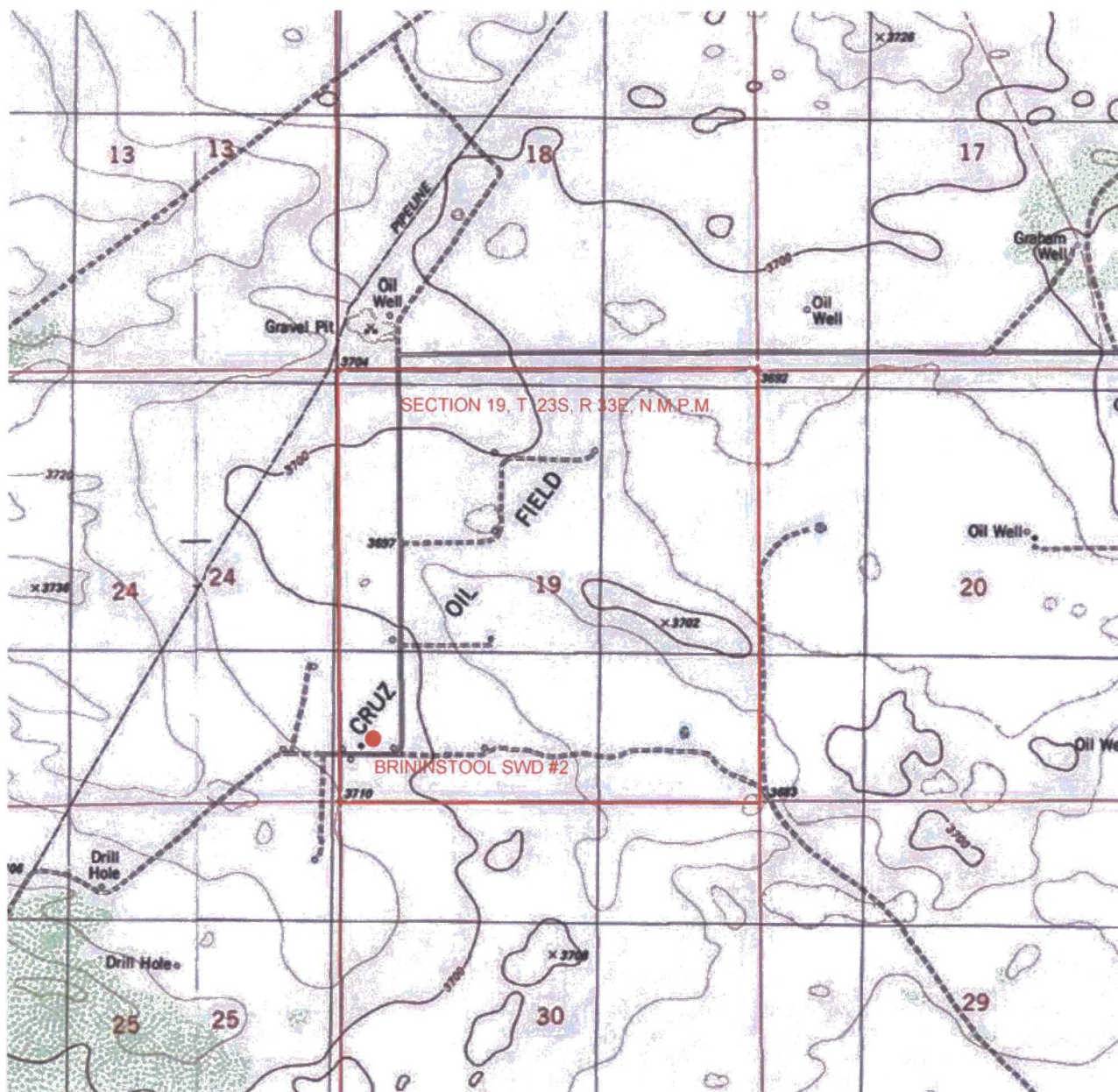


LOCATION VERIFICATION MAP



GRAPHIC SCALE 1" = 2000'

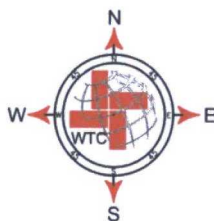
SECTION 19, T. 23S, R. 33E, N.M.P.M.

COUNTY: LEA STATE: NM

DESCRIPTION: 784' FSL & 419' FWL

OPERATOR: RKI EXPLORATION & PRODUCTION

WELL NAME: BRININSTOOL SWD-2

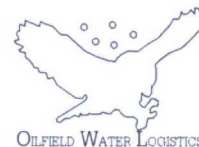


DRIVING DIRECTIONS:

FROM JAL AT THE INTERSECTION OF STATE HIGHWAY 18 AND W NM HIGHWAY 128. GO WEST/NORTHWEST ON W NM HIGHWAY 128 FOR 24.0 MILES TO A LEASE ROAD (BRININSTOOL ROAD). TURN RIGHT. GO NORTH ON LEASE ROAD (BRININSTOOL ROAD) 4.2 MILES TO A LEASE ROAD. TURN LEFT. GO WEST/ NORTHWEST FOR 2.8 MILES. LOCATION FLAG IS 187.0 FEET NORTH.



WTC, INC.
405 S.W. 1st Street
Andrews, TX 79714
(432) 523-2181



JOB No.: WTC50375

AERIAL MAP



0 1000 2000 4000

GRAPHIC SCALE 1" = 2000'

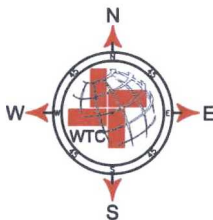
SECTION 19, T 23S, R 33E, N.M.P.M.

COUNTY: LEA STATE: NM

DESCRIPTION: 784' FSL & 419' FWL

OPERATOR: RKI EXPLORATION & PRODUCTION

WELL NAME: BRINSTOOL SWD-2



DRIVING DIRECTIONS:

FROM JAL AT THE INTERSECTION OF STATE HIGHWAY 18 AND W NM HIGHWAY 128. GO WEST/NORTHWEST ON W NM HIGHWAY 128 FOR 24.0 MILES TO A LEASE ROAD (BRINSTOOL ROAD). TURN RIGHT. GO NORTH ON LEASE ROAD (BRINSTOOL ROAD) 4.2 MILES TO A LEASE ROAD TURN LEFT. GO WEST/ NORTHWEST FOR 2.8 MILES. LOCATION FLAG IS 187.0 FEET NORTH.

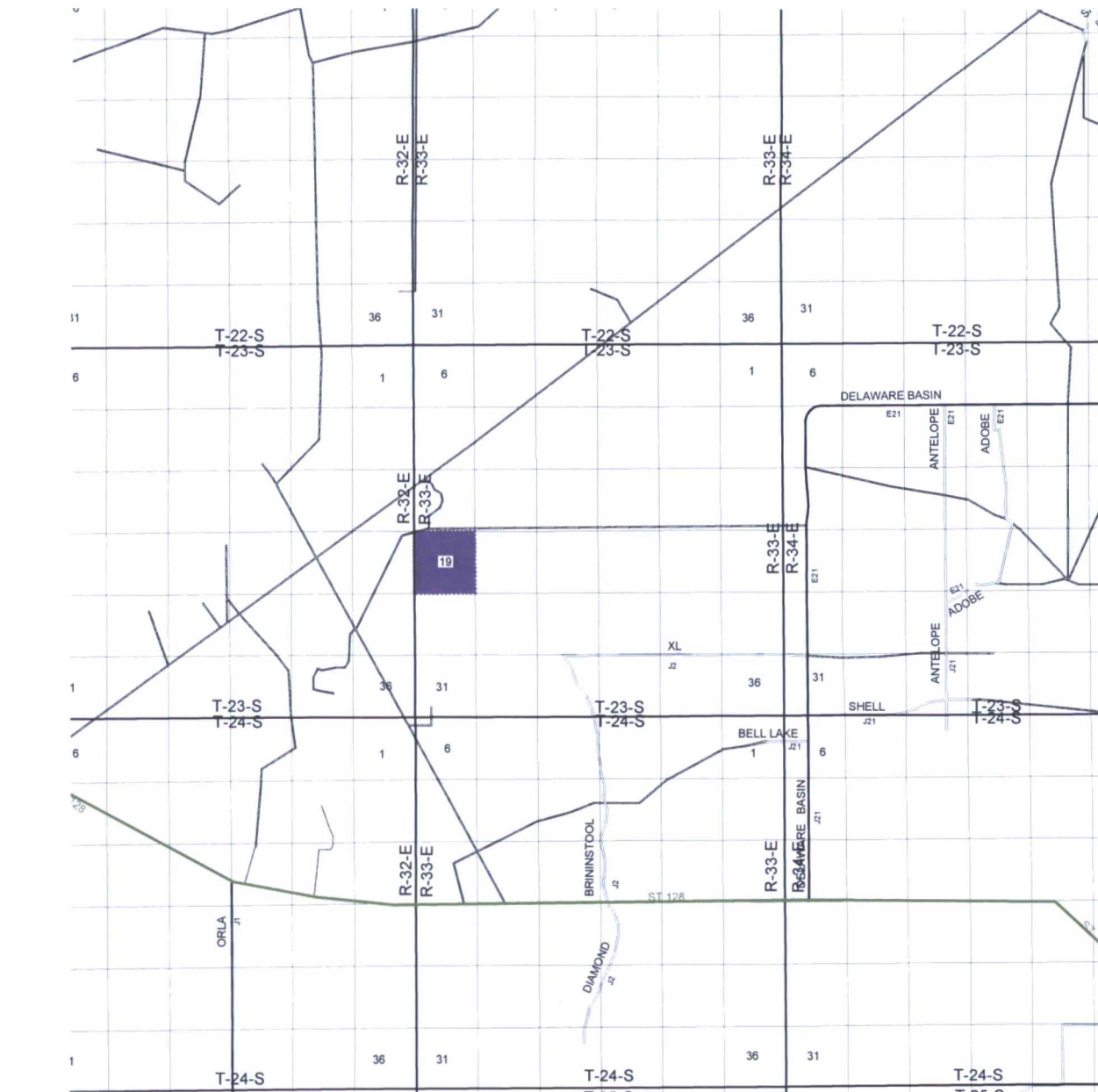


W T C, INC.
405 S.W. 1st Street
Andrews, TX 79714
(432) 523-2181



JOB No.: WTC50375

VICINITY MAP



GRAPHIC SCALE 1" = 1 MILE

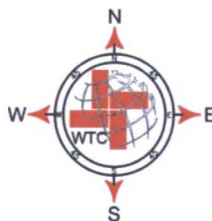
SECTION 19, T 23S, R 33E, N.M.P.M.

COUNTY: LEA STATE: NM

DESCRIPTION: 784' FSL & 419' FWL

OPERATOR: RKI EXPLORATION & PRODUCTION

WELL NAME: BRININSTOOL SWD-2



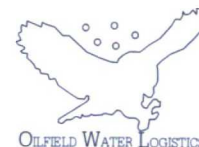
DRIVING DIRECTIONS:

FROM JAL AT THE INTERSECTION OF STATE HIGHWAY 18 AND W NM HIGHWAY 128. GO WEST/NORTHWEST ON W NM HIGHWAY 128 FOR 24.0 MILES TO A LEASE ROAD (BRININSTOOL ROAD). TURN RIGHT. GO NORTH ON LEASE ROAD (BRININSTOOL ROAD) 4.2 MILES TO A LEASE ROAD. TURN LEFT. GO WEST/NORTHWEST FOR 2.8 MILES. LOCATION FLAG IS 187.0 FEET NORTH.



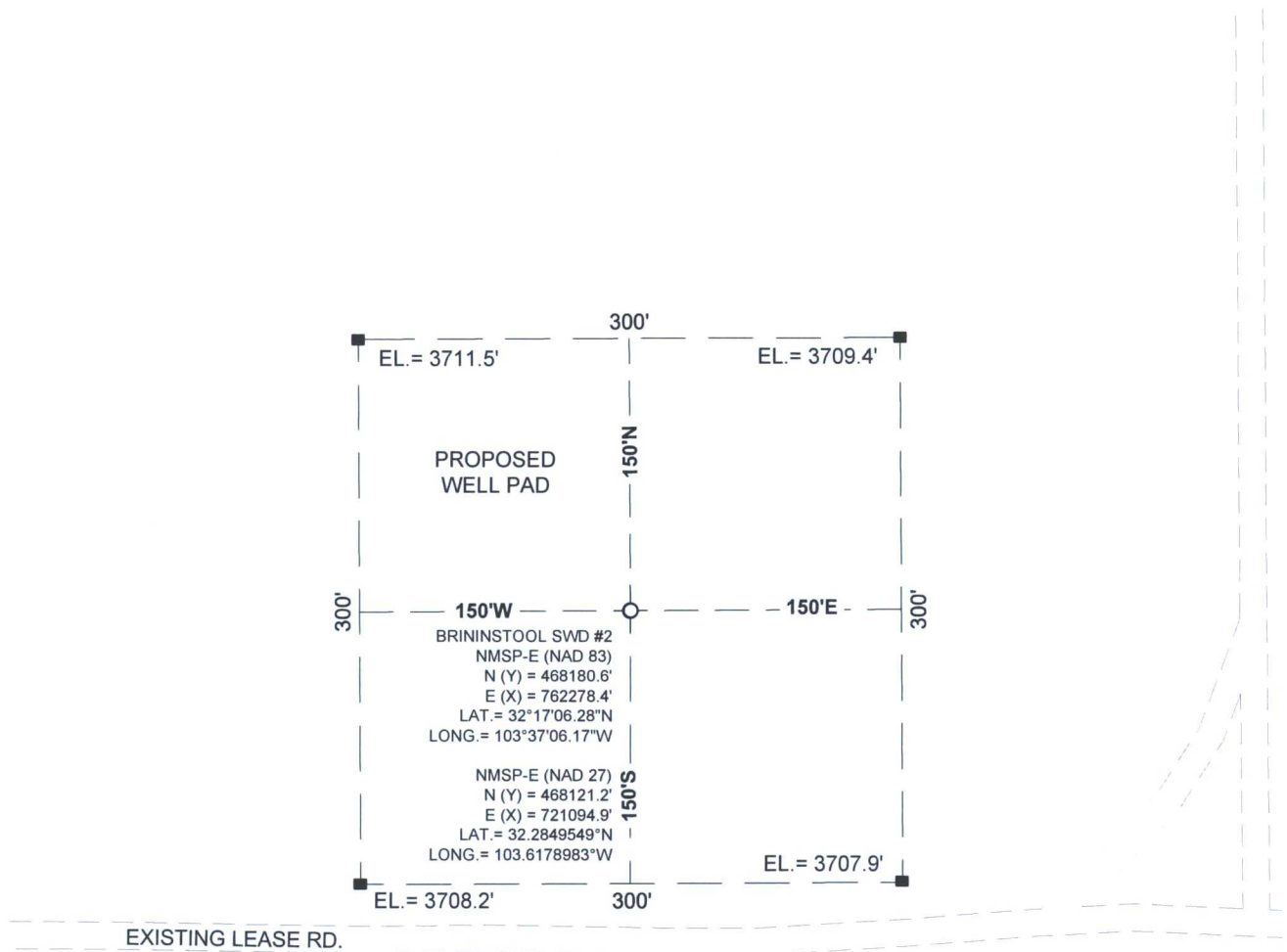
WTC, INC.

405 S.W. 1st Street
Andrews, TX 79714
(432) 523-2181



JOB No.: WTC50375

SITE LOCATION



GRAPHIC SCALE 1" = 100'

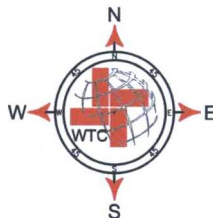
SECTION 19, T 23S, R 33E, N.M.P.M.

COUNTY: LEA STATE: NM

DESCRIPTION: 784' FNL & 419' FWL

OPERATOR: RKI EXPLORATION & PRODUCTION

WELL NAME: BRININSTOOL SWD-2



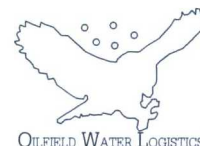
DRIVING DIRECTIONS:

FROM JAL AT THE INTERSECTION OF STATE HIGHWAY 18 AND W NM HIGHWAY 128. GO WEST/NORTHWEST ON W NM HIGHWAY 128 FOR 24.0 MILES TO A LEASE ROAD (BRININSTOOL ROAD). TURN RIGHT. GO NORTH ON LEASE ROAD (BRININSTOOL ROAD) 4.2 MILES TO A LEASE ROAD TURN LEFT. GO WEST/ NORTHWEST FOR 2.8 MILES. LOCATION FLAG IS 187.0 FEET NORTH.



WTC, INC.

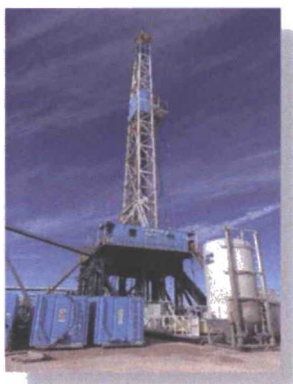
405 S.W. 1st Street
Andrews, TX 79714
(432) 523-2181



JOB No.: WTC50375

Latshaw DRILLING Rig 21

Primary Equipment



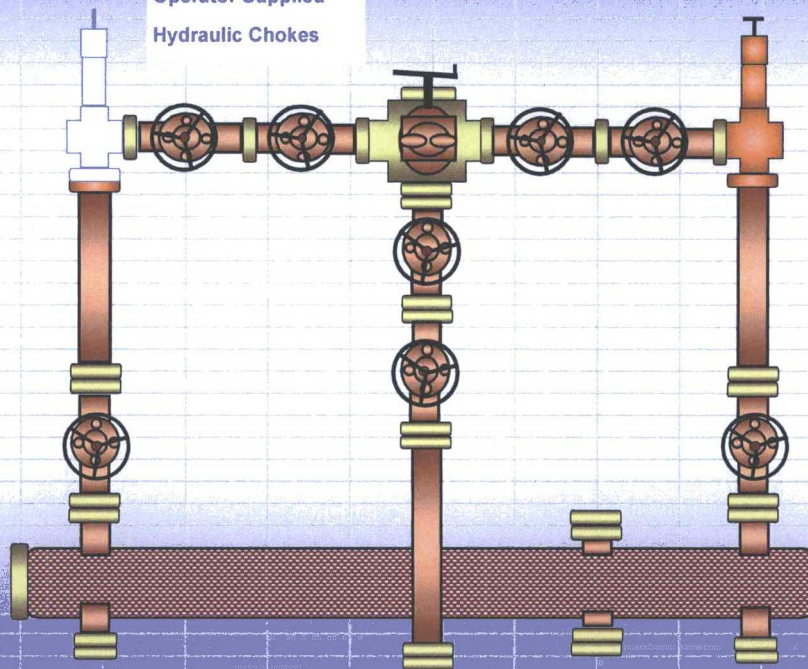
Major Systems	Secondary Systems
Drawworks Oilwell E-2000 2000HP Low Low rated 711,000# single line pull Driven by (2) GE 752 DC motors	Wichita 336 air operated/water cooled disc brake 1-3/8" WireRope 6 x 19 EIP IWRC
Prime Power Omron/ SCR System, 3 Generator Bays, 4 SCR Bays 3-Caterpillar 3512B w/ Kato 1365 KW/1950KVA 3 phase 60 htz 346/600 Volt AC Generators	Cold Start air system, primary Rig Air supply, floor hoisting systems Fuel Capacity 18,000gal & Water Storage Capacity 500bbl
Mast/Substructure DSI 142' 1,000,000# Hook load, Slingshot Design 27'RBC, 24.1'RKB Crown Block 6-60" Sheaves 1-3/8" Groove Fastline 1-60" 1-3/8" Groove Hydraulic jack Skidding system	Rotary Load 1,000,000# Set Back 600,000# Tool Pusher and Crew quarters rig matting boards
Top Drive - Traveling Block - Pipe Handling Varco TDS11SA VF AC 500 Ton Continental Emsco 500 Ton Block SJPetro 27 1/2" Rotary /Drwks Driven Varco ST-80 pipe handling system & IAT rot. MO	Martin-Decker Type E, Pump SPM & PSI, Top Drive control, SCR system controls & MU/BO Torque Manual Tongs, elevators, slips and clamps for Latshaw supplied DS
Mud Pumps 2 -Weatherford MP-16 1600HP Triplex 5,000#WP PSI Fluid Ends and delivery system Driven by (2) GE 752 DC motors	Church Energy 3,000PSI Accumulator, 180 gal, 6 station w/remote 8-NOV Max2000 10HP Mud agitators
Mud System 3 - Tank system (1,200bbl active Capacity) w 150bbl TT Tandem WFSI linear Shale Shakers	Derrick Desander 2- 12" Cones w/6 x 8 Centrifugal driven by 100HP Motor Derrick 12-4" Cones w/ 6 x 8 Centrifugal driven by 100HP Mtr
BOP Stack Description 13 5/8" 5,000#WP Shaffer Sperical Annular 13 5/8" 5,000#WP Axon Type 50 Double	Cameron Type FC 4 1/16"10M x 3 1/16" 10M Choke Manifold Derrick Vaccu Flow 1200 Degasser
Drill String 8 " and 6-1/2" Drill Collars 5" Drill Pipe	5" 19.5# G-105 and S-135 Heavy weight Drill pipe

Rig 21

Latshaw

DRILLING

Operator Supplied
Hydraulic Chokes



- 2 - Gate Valve 4 1/16" 10,000#WP
- 4 - Gate Valve 3 1/16" 10,000#WP
- 2 - Gate Valve 3 1/8" 5,000#WP
- 1 - Gate Valve 2 1/16" 10,000#WP
- 1 - Manual Adjustable Choke 3 1/10" 10,000#WP
- 1 - Studded Tee(3way) 10,000#WP
- 1 - Studded Cross (5way) 10,000#WP
- 1 - Instrument Flange and Gauge 10M 10 3/4" Buffer Chamber
- 4 - DSA's, 5 Blind Flanges
- 1 - Adapter Spool 2 1/16" 10,000#WP

Shaffer Spherical Annular

13-5/8" 5,000#WP

Axon Type 50

13 5/8" 5,000#WP Ram

13 5/8" 5,000#WP Ram

With required adaptors

Mud Cross 13 5/8" 5,000#WP

Wing Valve 4 1/16" 5,000#WP

HCR Valve 4 1/16" 5,000#WP

Choke Blk 4 1/16" 10,000#WP

DSA 5M to 10M

2-Kill Valves 2 1/16" 5,000#WP

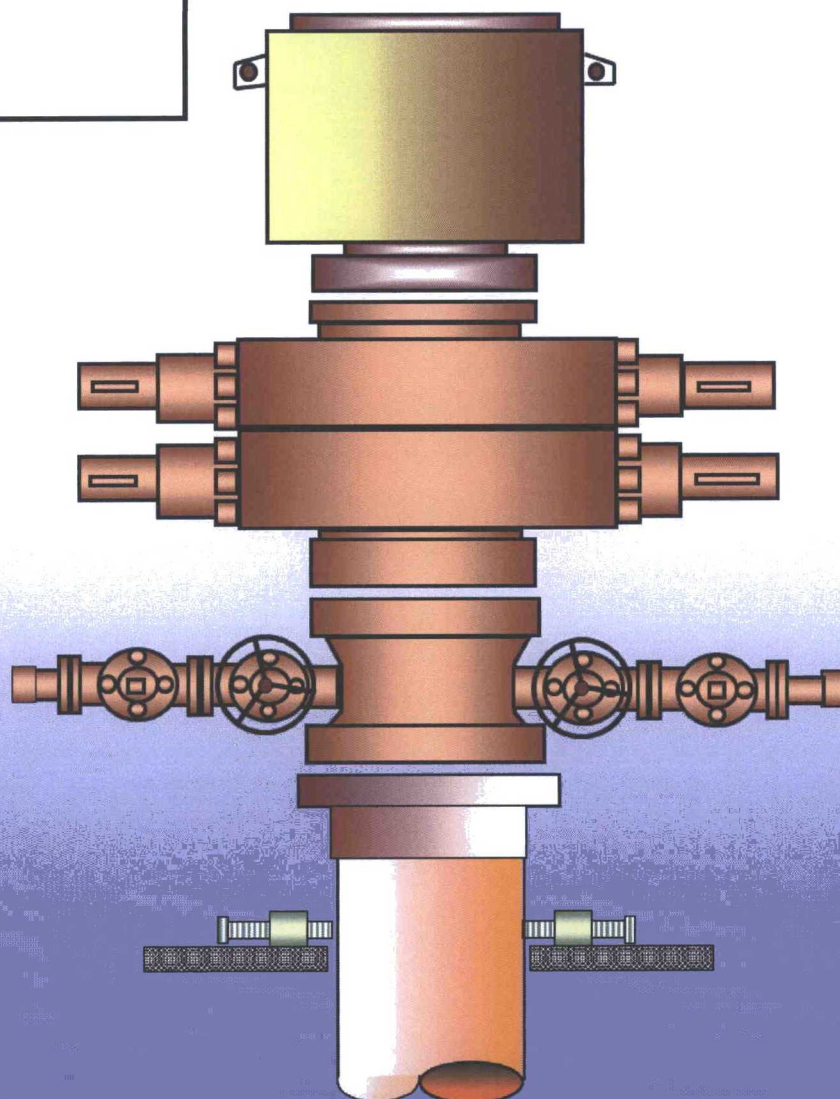
Check Valve 2 1/16" 5,000#WP

Choke Line 4 1/16" 10M Armored

Kill Line 2 1/16" 5M Armored

Latshaw
DRILLING

Rig 21





Latshaw DRILLING

Rig #21

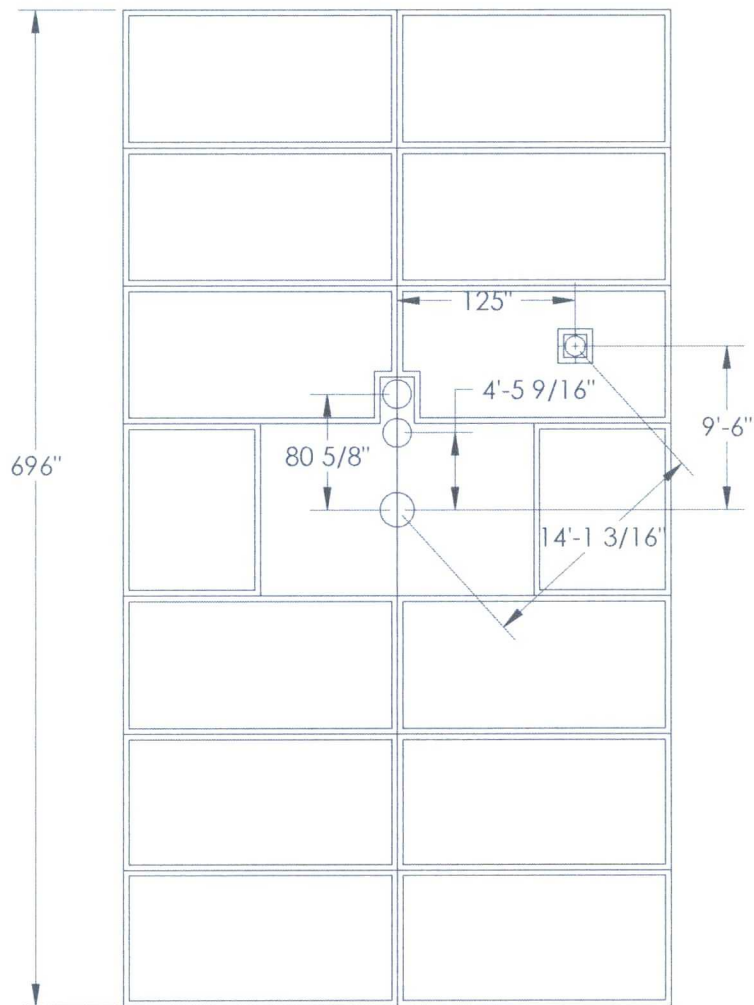
The floor plan shows the layout of Rig #21 with the following components and dimensions:

- Top Row (Left to Right):**
 - ACCUM. (Width: 8'11 1/2")
 - VFO SKID (Width: 6'0")
 - RESERVE WATER (Width: 2'0")
 - WATER (Width: 2'0")
 - PARTS (Width: 2'0")
 - GEN. (Width: 2'0")
 - GEN. (Width: 2'0")
 - GEN. (Width: 2'0")
 - FUEL (Width: 2'0")
- Second Row (Left to Right):**
 - 11'4 1/2" (Total width of first three units)
 - COLD START (Width: 4'0")
 - SCR HOUSE (Width: 4'0")
- Third Row (Left to Right):**
 - 8'10 1/2" (Total width of first two units)
 - MAIN SUITCASE (Width: 18'10")
- Fourth Row (Left to Right):**
 - EXT. (Width: 10'8 1/4")
 - CATWALK (Width: 4'10 1/4")
 - V-DOOR (Width: 5'11 1/2")
 - WELL CENTER FLOOR (Width: 31'2")
 - PUMP (Width: 4'5 1/2")
 - PUMP (Width: 4'5 1/2")
- Fifth Row (Left to Right):**
 - 20'0" (Total width of first three units)
 - 4'3" (Width of V-DOOR)
 - TRIP TANK (Width: 31'2")
 - 44'5 1/2" (Total width of last two units)
- Sixth Row (Left to Right):**
 - 35'6 1/2" (Total width of first three units)
 - 6'0 3/4" (Width of TRIP TANK)
 - PIT RIM (Width: 6'8 1/2")
 - PIT SKID (Width: 1'3")
 - 4'5 1/2" (Width of last unit)
- Bottom Row (Left to Right):**
 - SEPERATOR (Width: 5'10 1/2")
 - PIT (Width: 5'10 1/2")
 - PIT (Width: 5'10 1/2")
 - MUD HOUSE (Width: 5'10 1/2")

RIG PLAT

MOUSEHOLES & MATTING BOARDS

V-DOOR END



Standard Drill - Operating Procedure & Site Setup

ALL OPERATIONS CONDUCTED WITHIN EXISTING PAD SITE
NOT EXCEEDING SURVEYED SITE. ORIENTATION PER BEST FIT.

1. MIRU Drilling and drilling support contractors / equipment.
2. Set up H2S wind direction indicators; brief all personnel on Emergency Evacuation Routes.
3. All contractors conduct safety meeting prior to current task.
4. If H2S levels >20ppm detected, implement H2S Plan *accordingly*. (e.g., cease operations, shut in well, employ H2S safety trailer & personnel safety devices, install flare line, etc. - refer to plan.)
5. All equipment inspected daily. Repair / replace as required.
6. Mud logger monitoring returns; cuttings & waste hauled to specified facility. CRI - LEA COUNTY
7. Spills contained & cleaned up immediately. Repair or otherwise correct the situation within 48 hours before resuming operations. Notify OCD within 24 hours. Remediation started ASAP if required. Operator shall comply with 19.15.29 NMAC and 19.15.30 NMAC, as appropriate.
8. Sundry forms filed as needed - casing, cement, etc. - operations continue to completion.

TYPICAL LOCATION SETUP (V Door North)

