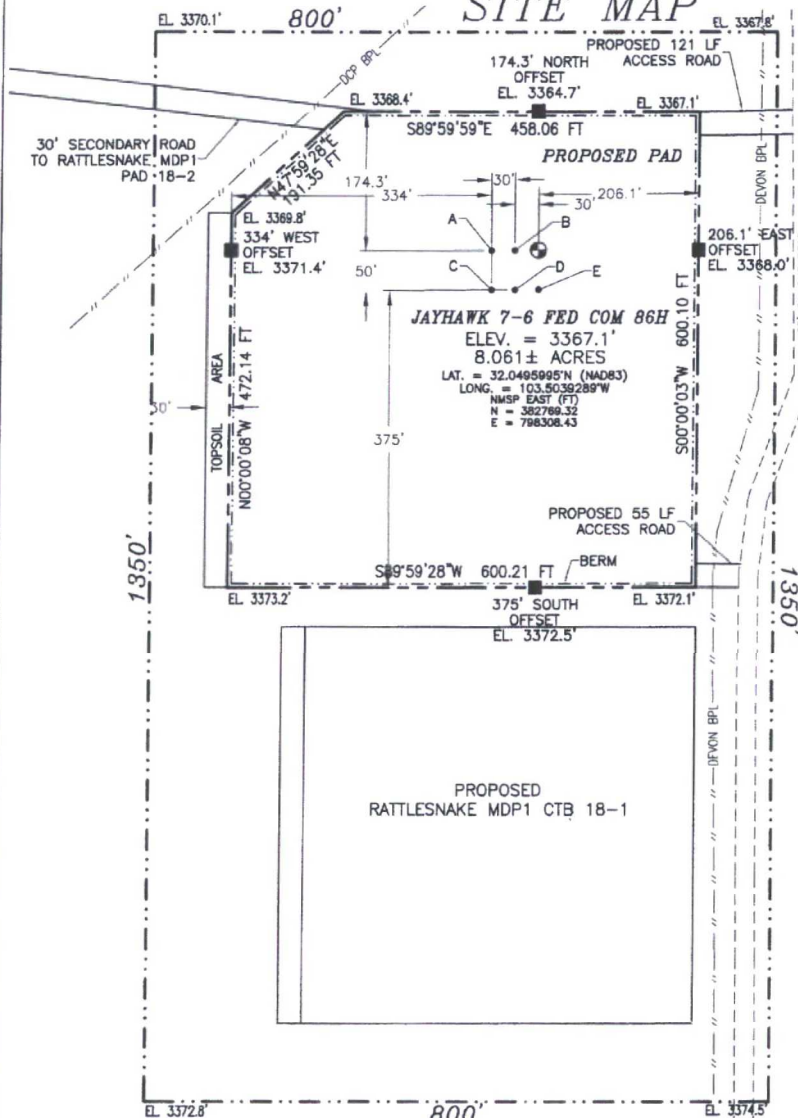


SECTION 18, TOWNSHIP 26 SOUTH, RANGE 34 EAST, N.M.P.M.  
LEA COUNTY, STATE OF NEW MEXICO

SITE MAP



NOTE: LATITUDE AND LONGITUDE COORDINATES ARE SHOWN USING THE NORTH AMERICAN DATUM OF 1983 (NAD83) LISTED NEW MEXICO STATE PLANE EAST COORDINATES ARE GRID (NAD83). BASIS OF BEARING AND DISTANCES USED ARE NEW MEXICO STATE PLANE EAST COORDINATES MODIFIED TO THE SURFACE. VERTICAL DATUM NAVD88.

- A - JAYHAWK 7-6 FED COM 84H
- B - JAYHAWK 7-6 FED COM 85H
- C - FIGHTING OKRA 18-19 FED 84H
- D - FIGHTING OKRA 18-19 FED 85H
- E - FIGHTING OKRA 18-19 FED 86H



0 20 100 200 400  
SCALE 1" = 200'

DIRECTIONS TO LOCATION

FROM STATE HIGHWAY 128 AND CR 2 (BATTLE AXE) GO SOUTH AND WEST ON CR 2 12.31 MILES, TURN LEFT ON CALICHE ROAD AND GO SOUTH 0.65 OF A MILE, TURN LEFT ON CALICHE PIPELINE ROAD AND GO EAST 1.81 MILES, TURN RIGHT AND GO SOUTH 1.07 MILES TO A PROPOSED ROAD SURVEY AND FOLLOW FLAGS WEST 121' TO THE PROPOSED NORTHEAST PAD CORNER FOR THIS LOCATION.

DEVON ENERGY PRODUCTION COMPANY, L.P.  
JAYHAWK 7-6 FED COM 86H  
LOCATED 400 FT. FROM THE NORTH LINE  
AND 1080 FT. FROM THE EAST LINE OF  
SECTION 18, TOWNSHIP 26 SOUTH,  
RANGE 34 EAST, N.M.P.M.  
LEA COUNTY, STATE OF NEW MEXICO

FEBRUARY 21, 2017

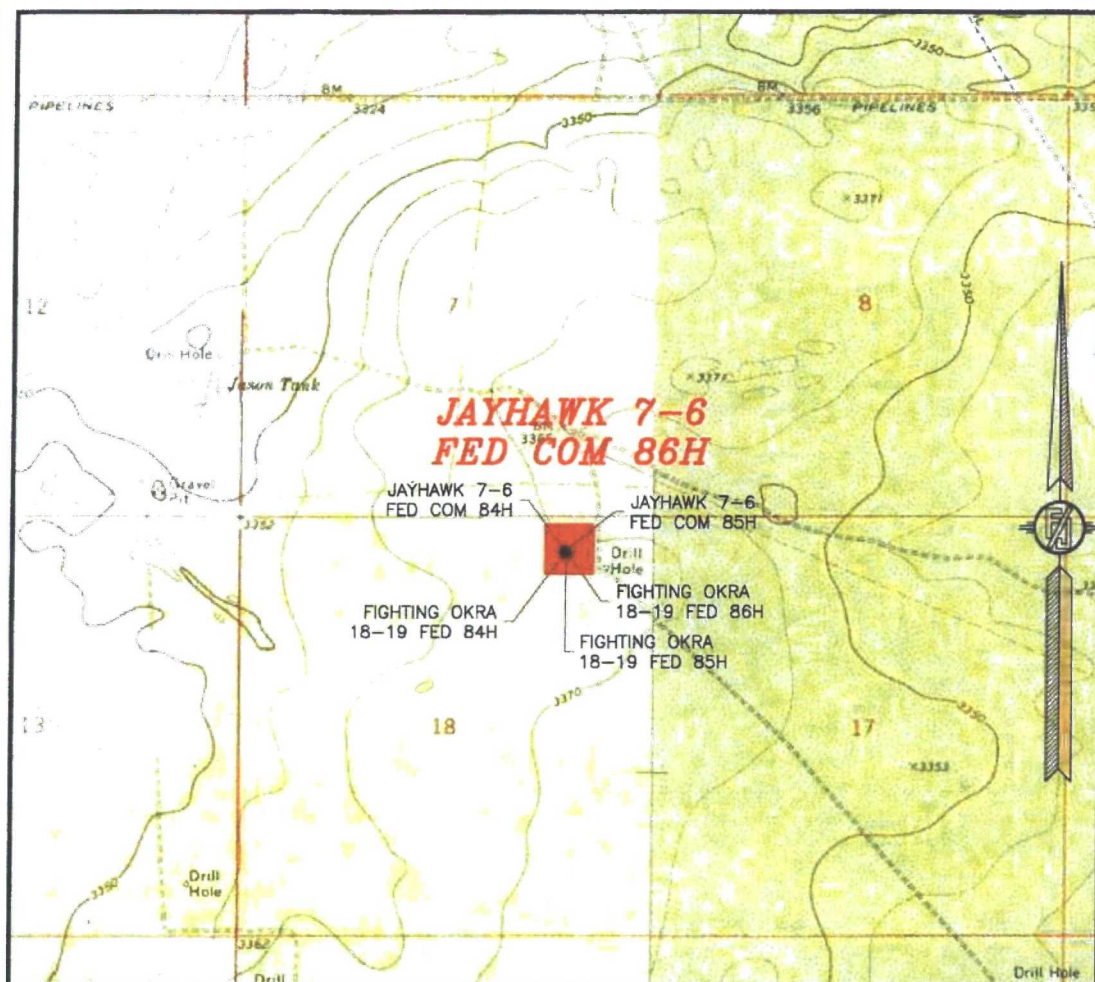
SURVEY NO. 4815B

MADRON SURVEYING, INC.

301 SOUTH CANAL  
(575) 234-3341

CARLSBAD, NEW MEXICO

SECTION 18, TOWNSHIP 26 SOUTH, RANGE 34 EAST, N.M.P.M.  
LEA COUNTY, STATE OF NEW MEXICO  
LOCATION VERIFICATION MAP



USGS QUAD MAP:  
PADUCA BREAKS EAST

NOT TO SCALE

DEVON ENERGY PRODUCTION COMPANY, L.P.  
**JAYHAWK 7-6 FED COM 86H**  
LOCATED 400 FT. FROM THE NORTH LINE  
AND 1080 FT. FROM THE EAST LINE OF  
SECTION 18, TOWNSHIP 26 SOUTH,  
RANGE 34 EAST, N.M.P.M.  
LEA COUNTY, STATE OF NEW MEXICO

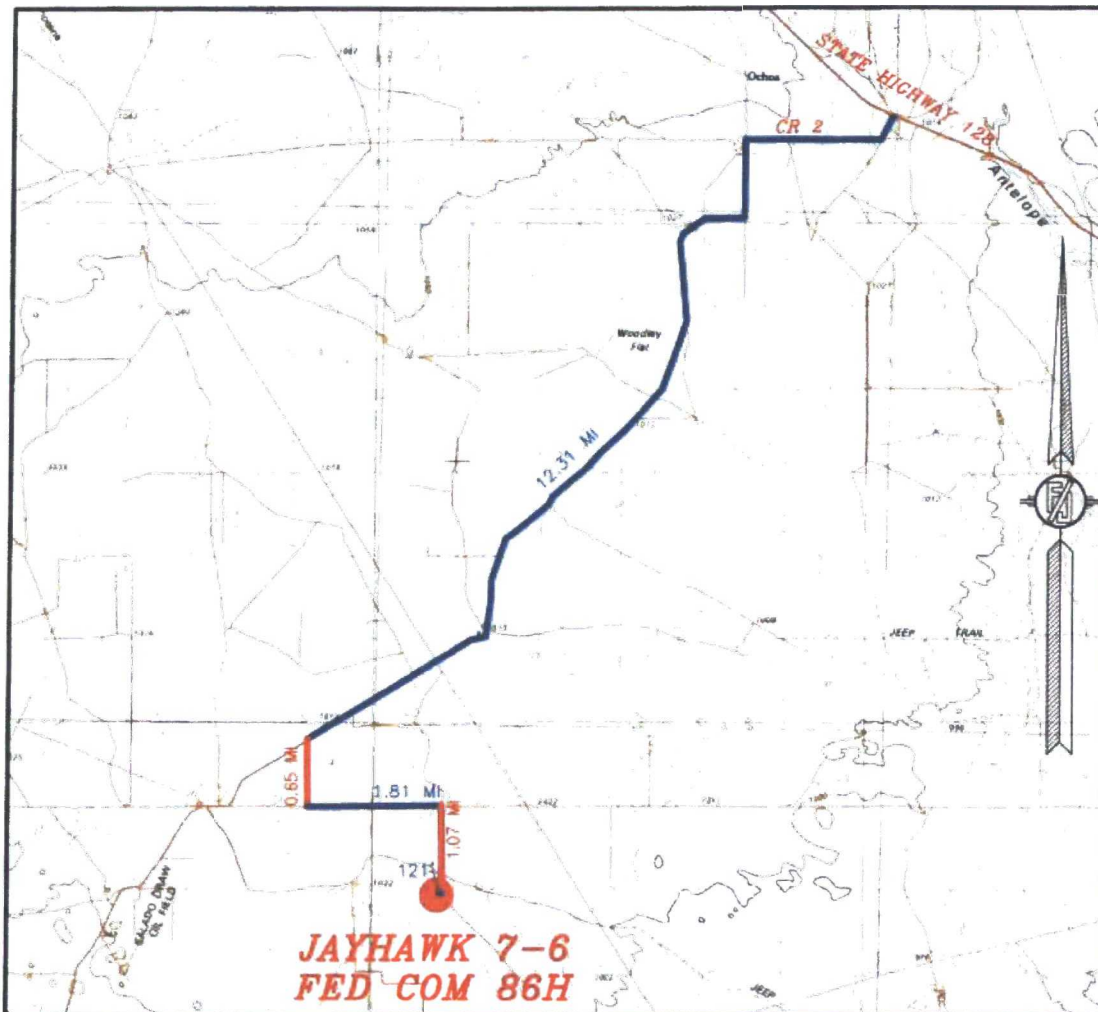
FEBRUARY 21, 2017

SURVEY NO. 4815B

MADRON SURVEYING, INC. 301 SOUTH CANAL (575) 234-3341 CARLSBAD, NEW MEXICO



SECTION 18, TOWNSHIP 26 SOUTH, RANGE 34 EAST, N.M.P.M.  
LEA COUNTY, STATE OF NEW MEXICO  
VICINITY MAP



DISTANCES IN MILES

NOT TO SCALE

DEVON ENERGY PRODUCTION COMPANY, L.P.  
**JAYHAWK 7-6 FED COM 86H**  
LOCATED 400 FT. FROM THE NORTH LINE  
AND 1080 FT. FROM THE EAST LINE OF  
SECTION 18, TOWNSHIP 26 SOUTH,  
RANGE 34 EAST, N.M.P.M.  
LEA COUNTY, STATE OF NEW MEXICO

**DIRECTIONS TO LOCATION**

FROM STATE HIGHWAY 128 AND CR 2 (BATTLE AXE) GO SOUTH AND WEST ON CR 2 12.31 MILES, TURN LEFT ON CAUCHE ROAD AND GO SOUTH 0.65 OF A MILE, TURN LEFT ON CAUCHE PIPELINE ROAD AND GO EAST 1.81 MILES, TURN RIGHT AND GO SOUTH 1.07 MILES TO A PROPOSED ROAD SURVEY AND FOLLOW FLAGS WEST 121' TO THE PROPOSED NORTHEAST PAD CORNER FOR THIS LOCATION.

FEBRUARY 21, 2017

SURVEY NO. 4815B

MADRON SURVEYING, INC. 301 SOUTH CANAL CARLSBAD, NEW MEXICO  
(575) 234-3341

SECTION 18, TOWNSHIP 26 SOUTH, RANGE 34 EAST, N.M.P.M.  
LEA COUNTY, STATE OF NEW MEXICO  
**AERIAL PHOTO**



NOT TO SCALE  
AERIAL PHOTO:  
GOOGLE EARTH  
NOVEMBER 2015

**DEVON ENERGY PRODUCTION COMPANY, L.P.**  
**JAYHAWK 7-6 FED COM 86H**  
LOCATED 400 FT. FROM THE NORTH LINE  
AND 1080 FT. FROM THE EAST LINE OF  
SECTION 18, TOWNSHIP 26 SOUTH,  
RANGE 34 EAST, N.M.P.M.  
LEA COUNTY, STATE OF NEW MEXICO

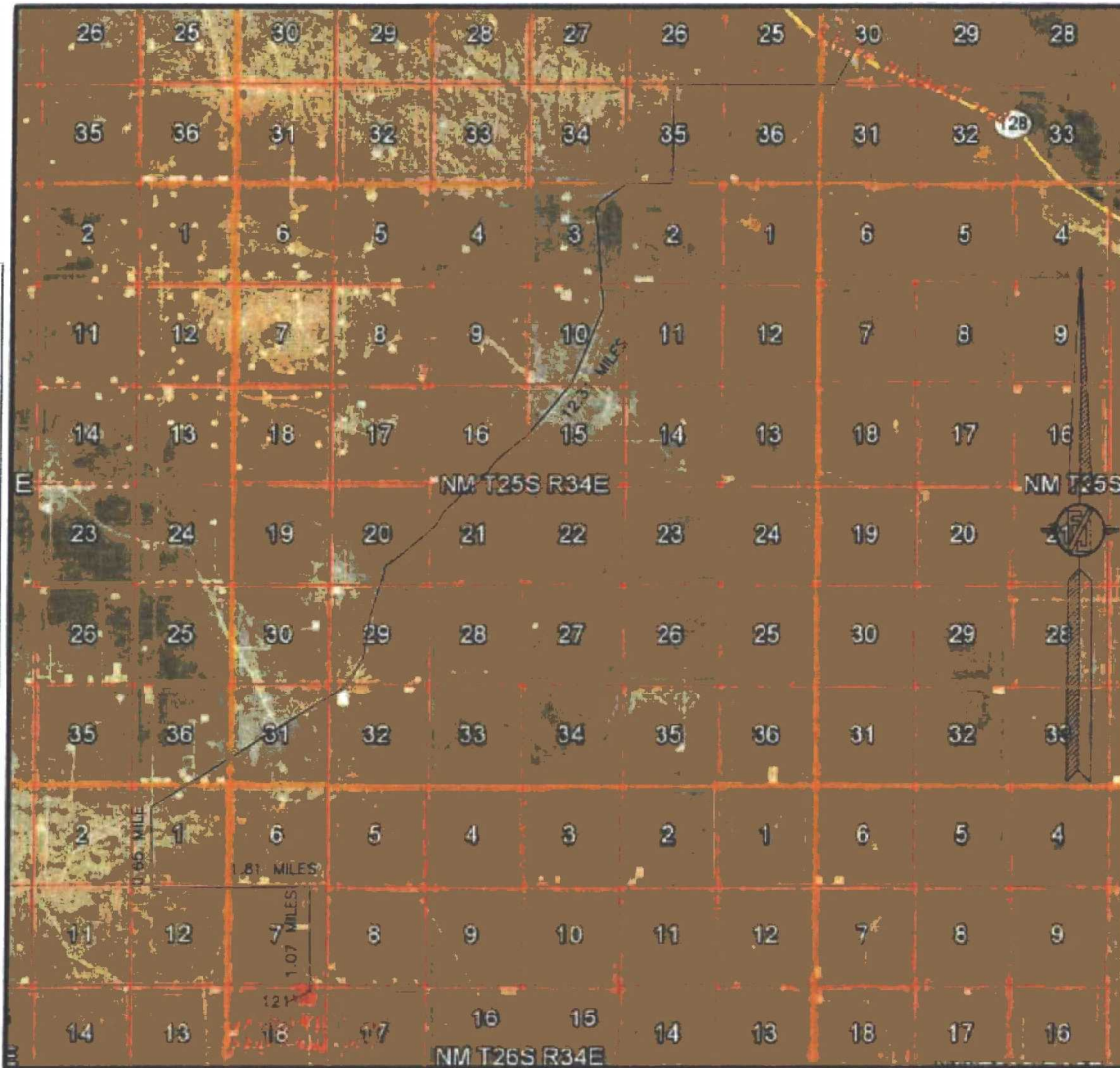
FEBRUARY 21, 2017

SURVEY NO. 4815B

MADRON SURVEYING, INC. 301 SOUTH CANAL (575) 234-3341 CARLSBAD, NEW MEXICO



SECTION 18, TOWNSHIP 26 SOUTH, RANGE 34 EAST, N.M.P.M.  
LEA COUNTY, STATE OF NEW MEXICO  
ACCESS AERIAL ROUTE MAP



NOT TO SCALE  
AERIAL PHOTO:  
GOOGLE EARTH  
NOVEMBER 2015

DEVON ENERGY PRODUCTION COMPANY, L.P.  
**JAYHAWK 7-6 FED COM 86H**  
LOCATED 400 FT. FROM THE NORTH LINE  
AND 1080 FT. FROM THE EAST LINE OF  
SECTION 18, TOWNSHIP 26 SOUTH,  
RANGE 34 EAST, N.M.P.M.  
LEA COUNTY, STATE OF NEW MEXICO

FEBRUARY 21, 2017

SURVEY NO. 4815B

MADRON SURVEYING, INC. 301 SOUTH CANAL (575) 234-3341 CARLSBAD, NEW MEXICO