

## SITE MAP

NORTH AMERICAN DATUM OF 1983 (NAD83) LISTED NEW MEXICO STATE PLANE EAST COORDINATES ARE GRID (NAD83). BASIS OF BEARING AND DISTANCES USED ARE NEW MEXICO STATE PLANE EAST COORDINATES MODIFIED TO THE SURFACE. VERTICAL DATUM NAVD88.

800' — CRUDE LINE —

EL. 3362.1' 275' NORTH OFFSET EL. 3364.4' EL. 3368.4' SEC. 7

EL. 3361.1' EL. 3368.4' SEC. 18

STAKED 150'x150' SURFACE SITE

STAKED SALADO DRAIN GAS LINE

STAKED SALADO DRAIN CRUDE LINE

300' WEST OFFSET EL. 3358.4'

TOPSOIL AREA

000'00'05"W 600.16 FT

275' 300' 30' 270'

PROPOSED JAYHAWK 7-6 FED 82H

PROPOSED FIGHTING OKRA 18-19 FED 82H

PROPOSED FIGHTING OKRA 18-19 FED 83H

270' EAST OFFSET EL. 3363.8'

1350'

600.17 FT

500'00'15"E 600.00 FT

EL. 3361.7'

BERM

30'

275' 30'

EL. 3358.5'

275' SOUTH OFFSET EL. 3358.8'

PROPOSED 122 LF ACCESS RD.

STAKED RATTLESNAKE MDP1 CTB 18-3

PROPOSED 30' PRIMARY ACCESS ROAD

STAKED RATTLESNAKE MDP1 PAD 18-2

STAKED RATTLESNAKE MDP1 CTB 18-2

JAYHAWK 7-6 FED 83H

ELEV. = 3362.0'

8.269± ACRES

LAT. = 32.0497889°N (NAD83)

LONG. = 103.5120654°W

NMSP EAST (FT)

N = 382818.97

E = 795786.92

N89°59'58"E 600.13 FT

N89°59'56"W 600.15 FT

EL. 3359.7'

800' EL. 3364.0'

SCALE 1" = 200'

### DIRECTIONS TO LOCATION

JAYHAWK 7-6 FED 83H

RANGE 34 EAST, N.M.P.M.

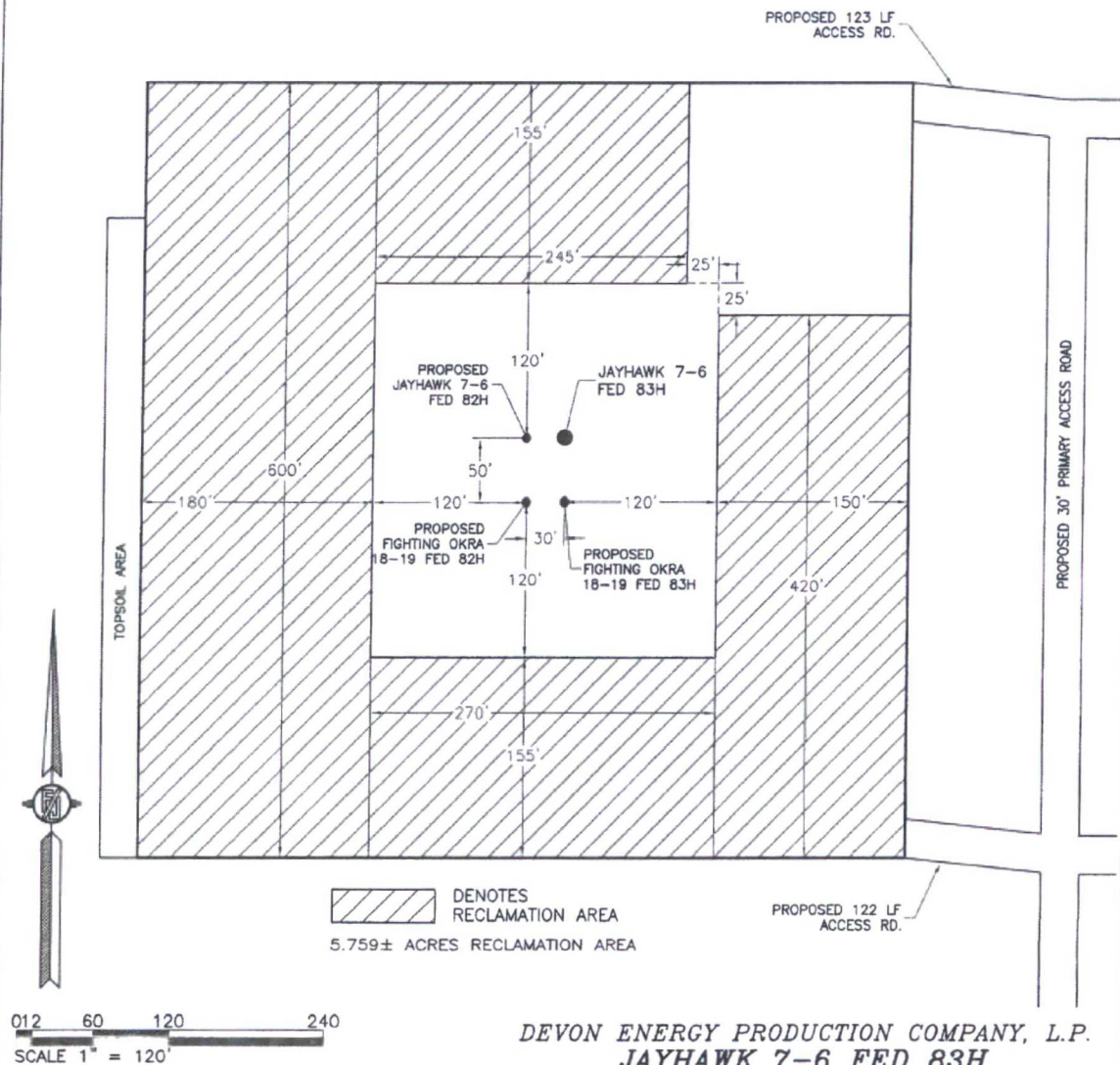
LEA COUNTY, STATE OF NEW MEXICO

SURVEY NO. 4812A

MADRON SURVEYING, INC. 301 SOUTH CANAL (575) 234-3341 CARLSBAD, NEW MEXICO

301 SOUTH CANAL  
(57S) 234-3341

**PROPOSED INTERIM SITE RECLAMATION  
FOR JAYHAWK 7-6 FED 83H  
SECTION 18, TOWNSHIP 26 SOUTH, RANGE 34 EAST, N.M.P.M.  
LEA COUNTY, STATE OF NEW MEXICO**



DEVON ENERGY PRODUCTION COMPANY, L.P.  
**JAYHAWK 7-6 FED 83H**  
LOCATED 330 FT. FROM THE NORTH LINE  
AND 1695 FT. FROM THE WEST LINE OF  
SECTION 18, TOWNSHIP 26 SOUTH,  
RANGE 34 EAST, N.M.P.M.  
LEA COUNTY, STATE OF NEW MEXICO

DECEMBER 15, 2016

SURVEY NO. 4812A

MADRON SURVEYING, INC. 301 SOUTH CANAL CARLSBAD, NEW MEXICO  
(575) 234-3341

## A topographic map section showing a mountainous area. Contour lines are drawn at intervals of 100 feet, with labels such as 3200, 3300, 3400, 3500, 3600, and 3700. Several points are marked with elevations: 4440, 3294, 3356, 3370, 3372, 3374, and 3376. A road or path labeled "PIPE" runs along the top right edge. A stream or drainage feature is visible on the left side. A prominent label in large, bold, black letters reads "JAYHAWK 7-6". Below it, in smaller black letters, is "FED 83H". To the left of this, another label says "PROPOSED JAYHAWK 7-6 FED 82H". Further down and to the left, there's a label "PROPOSED FIGHTING OKRA 18-19 FED 82H". To the right of the central point, there's a label "PROPOSED FIGHTING OKRA 18-19 FED 83H". A small red square is located between the "JAYHAWK 7-6 FED 82H" and "FED 83H" labels. Other labels include "Drill Hole", "Jason Turck", "B.M.", and "Elev.". A north arrow is located in the upper right corner, pointing towards the top of the page. The map is divided into sections by dashed lines, with numbers like 12, 13, and 18 appearing in some areas.

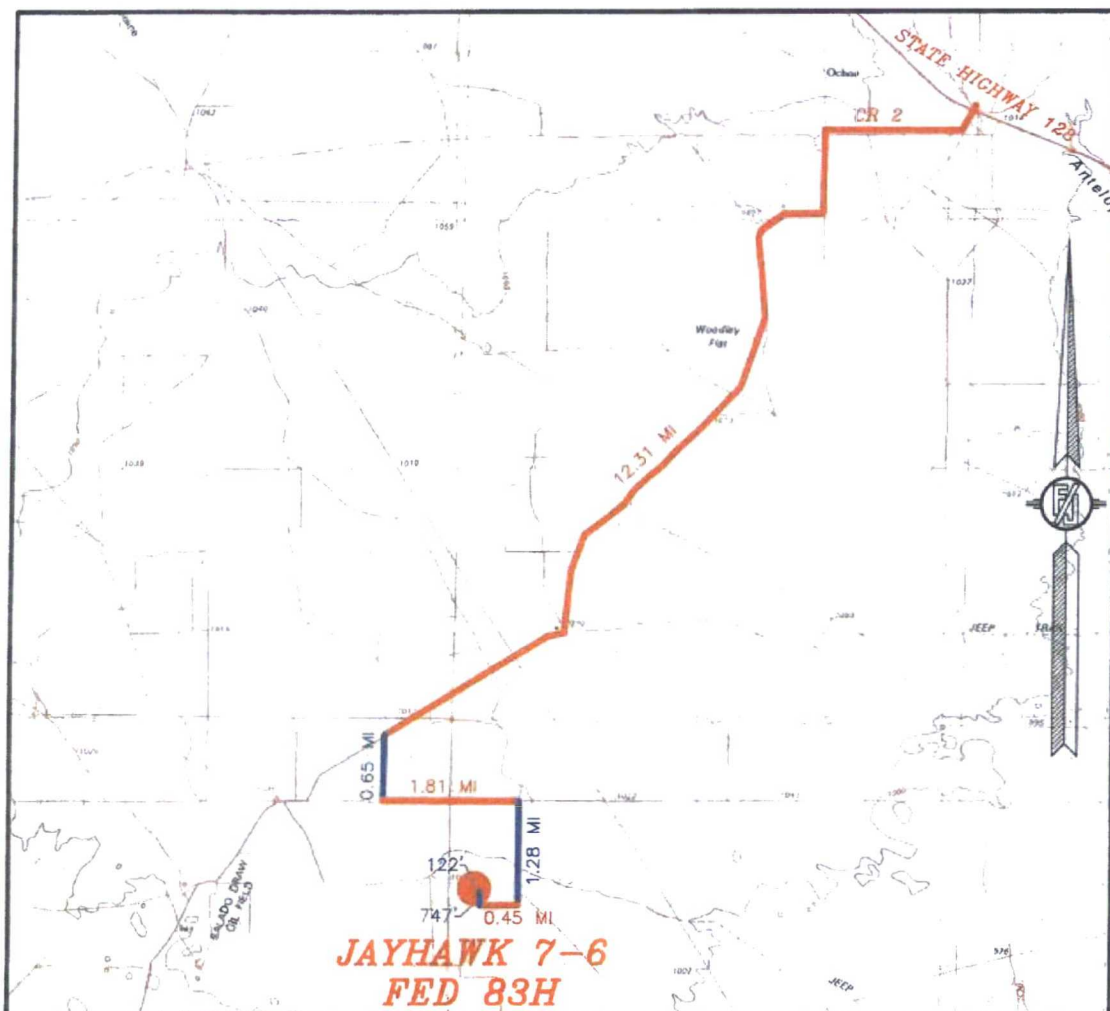
NOT TO SCALE

DECEMBER 15, 2016

MADRON SURVEYING, INC. 301 SOUTH CANAL (875) 234 3341 CARLSBAD, NEW MEXICO SURVEY NO. 4812A



SECTION 18, TOWNSHIP 26 SOUTH, RANGE 34 EAST, N.M.P.M.  
LEA COUNTY, STATE OF NEW MEXICO  
VICINITY MAP



DISTANCES IN MILES

NOT TO SCALE

DEVON ENERGY PRODUCTION COMPANY, L.P.

**JAYHAWK 7-6 FED 83H**

LOCATED 330 FT. FROM THE NORTH LINE  
AND 1695 FT. FROM THE WEST LINE OF

SECTION 18, TOWNSHIP 26 SOUTH,  
RANGE 34 EAST, N.M.P.M.

LEA COUNTY, STATE OF NEW MEXICO

DECEMBER 15, 2016

**DIRECTIONS TO LOCATION**

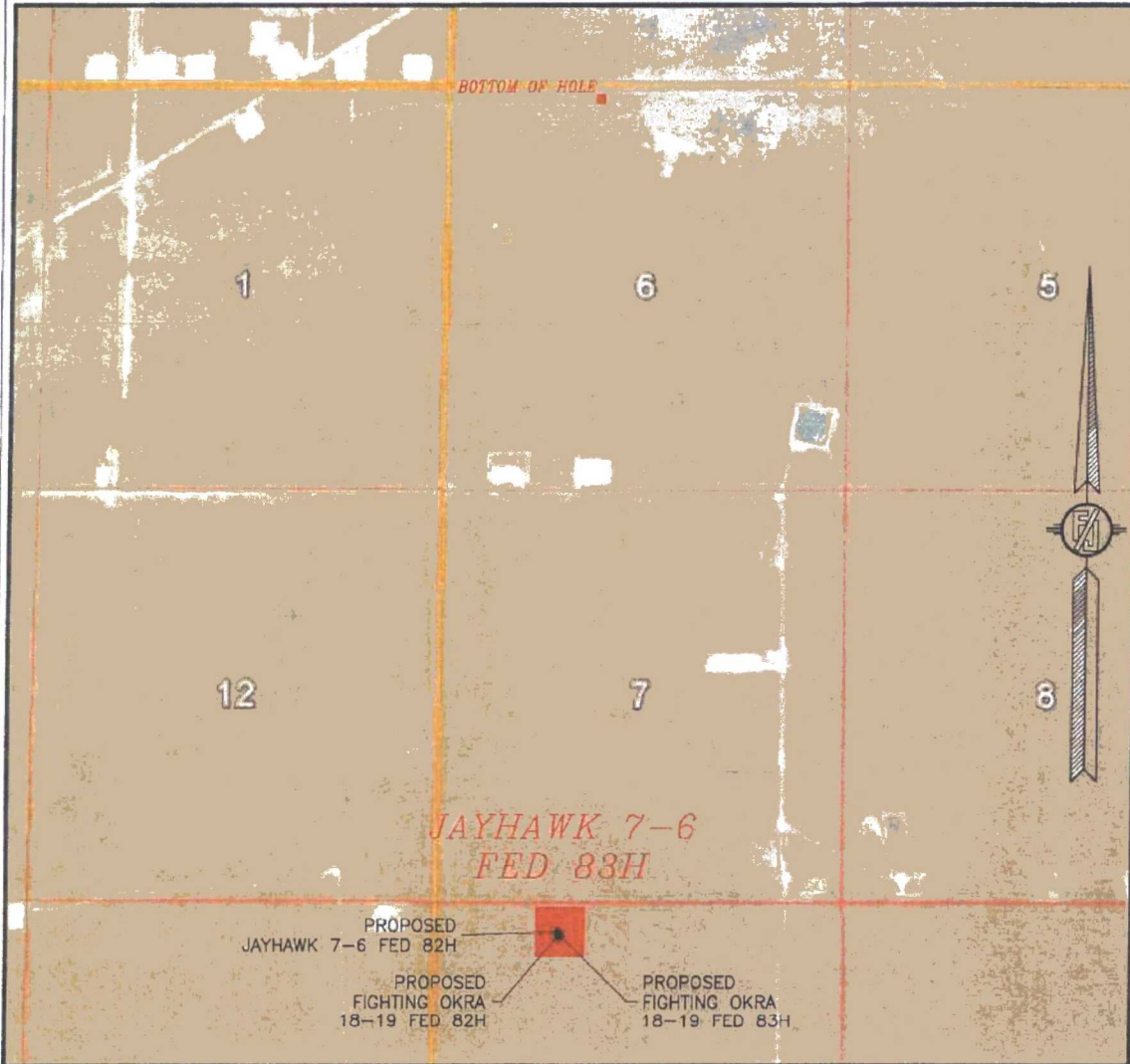
FROM THE INTERSECTION OF STATE HIGHWAY 128 (JAL HWY)  
AND CR 2 (BATTLE AXE ROAD) GO SOUTH ON CR 2 12.31  
MILES, TURN LEFT ON A CALICHE LEASE ROAD GO SOUTH 0.65  
MILE TO PIPELINE ROAD TURN LEFT GO EAST 1.81 MILES TURN  
RIGHT AT CALICHE LEASE ROAD GO SOUTH 1.28 MILES TO A  
PROPOSED ROAD SURVEY, FOLLOW ROAD SURVEY WEST 0.45  
MILE, THEN NORTH 747', THEN WEST 122' TO THE SOUTHWEST  
CORNER OF PAD FOR THIS LOCATION.

SURVEY NO. 4812A

MADRON SURVEYING, INC. 301 SOUTH CANAL  
(575) 234-3341

CARLSBAD, NEW MEXICO

SECTION 18, TOWNSHIP 26 SOUTH, RANGE 34 EAST, N.M.P.M.  
LEA COUNTY, STATE OF NEW MEXICO  
AERIAL PHOTO



NOT TO SCALE  
AERIAL PHOTO:  
GOOGLE EARTH  
NOVEMBER 2015

DEVON ENERGY PRODUCTION COMPANY, L.P.  
**JAYHAWK 7-6 FED 83H**  
LOCATED 330 FT. FROM THE NORTH LINE  
AND 1695 FT. FROM THE WEST LINE OF  
SECTION 18, TOWNSHIP 26 SOUTH,  
RANGE 34 EAST, N.M.P.M.  
LEA COUNTY, STATE OF NEW MEXICO

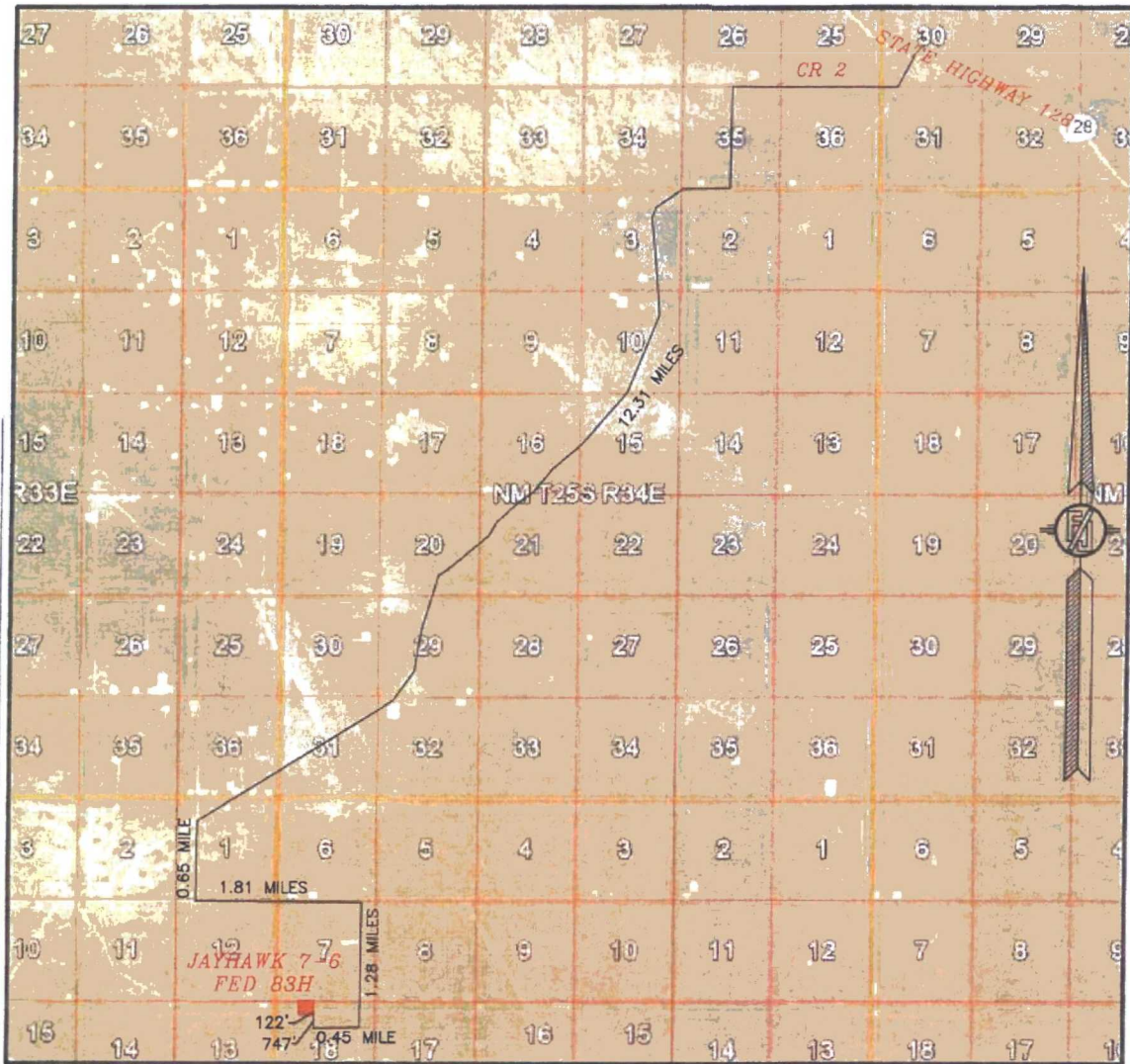
DECEMBER 15, 2016

SURVEY NO. 4812A

MADRON SURVEYING, INC. 301 SOUTH CANAL (575) 234-3341 CARLSBAD, NEW MEXICO



SECTION 18, TOWNSHIP 26 SOUTH, RANGE 34 EAST, N.M.P.M.  
LEA COUNTY, STATE OF NEW MEXICO  
ACCESS AERIAL ROUTE MAP



NOT TO SCALE  
AERIAL PHOTO:  
GOOGLE EARTH  
NOVEMBER 2015

DEVON ENERGY PRODUCTION COMPANY, L.P.

JAYHAWK 7-6 FED 83H

LOCATED 330 FT. FROM THE NORTH LINE  
AND 1695 FT. FROM THE WEST LINE OF  
SECTION 18, TOWNSHIP 26 SOUTH,  
RANGE 34 EAST, N.M.P.M.  
LEA COUNTY, STATE OF NEW MEXICO

DECEMBER 15, 2016

SURVEY NO. 4812A

MADRON SURVEYING, INC. 301 SOUTH CANAL (575) 234-3341 CARLSBAD, NEW MEXICO