

UNITED STATES
DEPARTMENT OF THE INTERIOR
BUREAU OF LAND MANAGEMENT

OCD-HOBBS

HOBBS OCD

FORM APPROVED
OMB NO. 1004-0137
Expires: January 31, 2018**SUNDRY NOTICES AND REPORTS ON WELLS**
Do not use this form for proposals to drill or to re-enter an abandoned well. Use form 3160-3 (APD) for such proposals.

SEP 11 2017

SUBMIT IN TRIPLICATE - Other instructions on page 2

RECEIVED

5. Lease Serial No.
NMLC063965 ✓
6. If Indian, Allottee or Tribe Name
7. If Unit or CA/Agreement, Name and/or No.
NM70926x
8. Well Name and No.
COOPER JAL UNIT 132 ✓
9. API Well No.
30-025-09639
10. Field and Pool or Exploratory Area
JALMAT;T-Y-7R/LM;7R-Q-G
11. County or Parish, State
LEA CO COUNTY, NM

1. Type of Well

☐ Oil Well ☐ Gas Well ☒ Other: INJECTION

2. Name of Operator

LEGACY RESERVES OPERATING LP-Mail: jsaenz@legacylp.com

Contact: JOHN SAENZ

3a. Address

303 W WALL ST STE 1800
MIDLAND, TX 79701

3b. Phone No. (include area code)

Ph: 432-689-5200 Ext: 5282

4. Location of Well (Footage, Sec., T., R., M., or Survey Description)

Sec 24 T24S R36E NESE 2310FSL 990FEL ✓

12. CHECK THE APPROPRIATE BOX(ES) TO INDICATE NATURE OF NOTICE, REPORT, OR OTHER DATA

TYPE OF SUBMISSION	TYPE OF ACTION			
<input checked="" type="checkbox"/> Notice of Intent	<input type="checkbox"/> Acidize	<input type="checkbox"/> Deepen	<input type="checkbox"/> Production (Start/Re)	
<input type="checkbox"/> Subsequent Report	<input type="checkbox"/> Alter Casing	<input type="checkbox"/> Hydraulic Fracturing	<input type="checkbox"/> Reclamation	
<input type="checkbox"/> Final Abandonment Notice	<input type="checkbox"/> Casing Repair	<input type="checkbox"/> New Construction	<input type="checkbox"/> Recomplete	
	<input type="checkbox"/> Change Plans	<input checked="" type="checkbox"/> Plug and Abandon	<input type="checkbox"/> Temporarily Aband	
	<input type="checkbox"/> Convert to Injection	<input type="checkbox"/> Plug Back	<input type="checkbox"/> Water Disposal	

INT TO PA PMX
P&A NR
P&A R

13. Describe Proposed or Completed Operation: Clearly state all pertinent details, including estimated starting date of any proposed work and approximate duration thereof. If the proposal is to deepen directionally or recompleat horizontally, give subsurface locations and measured and true vertical depths of all pertinent markers and zones. Attach the Bond under which the work will be performed or provide the Bond No. on file with BLM/BIA. Required subsequent reports must be filed within 30 days following completion of the involved operations. If the operation results in a multiple completion or recompleat in a new interval, a Form 3160-4 must be filed once testing has been completed. Final Abandonment Notices must be filed only after all requirements, including reclamation, have been completed and the operator has determined that the site is ready for final inspection.

All plugs to be minimum 25 sacks of cement.

Proposed P&A Procedure:

1. MIRU. Install BOP. Lay down injection tubing and packer. Pick up work string.
2. RIH and set CIBP at 3200'.
3. RIH and set CIBP at 2975'.
4. Circulate minimum 9.5 ppg P&A mud to surface and spot 100' of cement on top of CIBP at 2975'.
5. TOOH. Spot balanced cement plug from 1200' to 1100'.
6. TOOH. Perforate at 320'. Attempt to inject.
7. RIH with PKR to 200'. Pump into perf @ 320' w/minimum 35 sx cement. WOC, POOH w/packer. RIH w/opened ended tubing and tag TOC at/above 220'.
8. TOOH.

SEE ATTACHED FOR
CONDITIONS OF APPROVAL

WITNESS

14. I hereby certify that the foregoing is true and correct.

Electronic Submission #378799 verified by the BLM Well Information System
For LEGACY RESERVES OPERATING LP, sent to the Hobbs
Committed to AFMSS for processing by DEBORAH MCKINNEY on 06/14/2017 ()

Name (Printed/Typed) JOHN SAENZ

Title OPERATIONS ENGINEER

Signature (Electronic Submission)

Date 06/13/2017

APPROVED

THIS SPACE FOR FEDERAL OR STATE OFFICE USE

Approved By

Title

TPET

Date

08/18/17

Conditions of approval, if any, are attached. Approval of this notice does not warrant or certify that the applicant holds legal or equitable title to those rights in the subject lease which would entitle the applicant to conduct operations thereon.

Office

BUREAU OF LAND MANAGEMENT
CARLSBAD FIELD OFFICE

Title 18 U.S.C. Section 1001 and Title 43 U.S.C. Section 1212, make it a crime for any person knowingly and willfully to make to any department or agency of the United States any false, fictitious or fraudulent statements or representations as to any matter within its jurisdiction.

(Instructions on page 2)

** OPERATOR-SUBMITTED ** OPERATOR-SUBMITTED ** OPERATOR-SUBMITTED **

FOR RECORD ONLY
mw/OCD 09/12/2017

Additional data for EC transaction #378799 that would not fit on the form

32. Additional remarks, continued

9. Spot cement plug from 100' to surface.

10. POOH, top off casing, remove WH, set P&A marker, clean and reclaim location.

Installed Closed-Loop System with steel tanks. Haul contents from Closed-Loop System to approved NMOCD disposal location according to Rule 19.15.17.

WELL NO. 132 WIN

WELLBORE SCHEMATIC AND HISTORY

WELLBORE SCHEMATIC AND HISTORY				WELL NO. 132 W/1	
CURRENT COMPLETION SCHEMATIC		COOPER JAI UNIT		WATER INJECTOR	
STATUS: Active		2310 FSL & 900 FEET, Sep 24, T-265, R-265, Lm County, New Mexico		3315 OF	
LOCATION: 2310 FSL & 900 FEET, Sep 24, T-265, R-265, Lm County, New Mexico		2310 FSL & 900 FEET, Sep 24, T-265, R-265, Lm County, New Mexico		3315 OF	
RT COMP DATE: 2007-10-01		2007-10-01		3315 OF	
ELECTRIC LOGS		GEOLOGICAL DATA		CORES, DSTS, & MUD LOGS	
GR-N from 0 - 3656 (42954 Schlumberger)		Sat Top 1250		Yates 2002	
GR-CEL VSC Casing & 200 - 3300 (6.750 H&W, Inc.)		Yates 2002		Yates 2002	
Yates 2002		Yates 2002		Yates 2002	
Yates 2016		Yates 2016		Yates 2016	
Yates 2016		Yates 2016		Yates 2016	
Yates 2016		Yates 2016		Yates 2016	
Yates 2016		Yates 2016		Yates 2016	
Yates 2016		Yates 2016		Yates 2016	
Yates 2016		Yates 2016		Yates 2016	
Yates 2016		Yates 2016		Yates 2016	
Yates 2016		Yates 2016		Yates 2016	
Yates 2016		Yates 2016		Yates 2016	
Yates 2016		Yates 2016		Yates 2016	
Yates 2016		Yates 2016		Yates 2016	
Yates 2016		Yates 2016		Yates 2016	
Yates 2016		Yates 2016		Yates 2016	
Yates 2016		Yates 2016		Yates 2016	
Yates 2016		Yates 2016		Yates 2016	
Yates 2016		Yates 2016		Yates 2016	
Yates 2016		Yates 2016		Yates 2016	
Yates 2016		Yates 2016		Yates 2016	
Yates 2016		Yates 2016		Yates 2016	
Yates 2016		Yates 2016		Yates 2016	
Yates 2016		Yates 2016		Yates 2016	
Yates 2016		Yates 2016		Yates 2016	
Yates 2016		Yates 2016		Yates 2016	
Yates 2016		Yates 2016		Yates 2016	
Yates 2016		Yates 2016		Yates 2016	
Yates 2016		Yates 2016		Yates 2016	
Yates 2016		Yates 2016		Yates 2016	
Yates 2016		Yates 2016		Yates 2016	
Yates 2016		Yates 2016		Yates 2016	
Yates 2016		Yates 2016		Yates 2016	
Yates 2016		Yates 2016		Yates 2016	
Yates 2016		Yates 2016		Yates 2016	
Yates 2016		Yates 2016		Yates 2016	
Yates 2016		Yates 2016		Yates 2016	
Yates 2016		Yates 2016		Yates 2016	
Yates 2016		Yates 2016		Yates 2016	
Yates 2016		Yates 2016		Yates 2016	
Yates 2016		Yates 2016		Yates 2016	
Yates 2016		Yates 2016		Yates 2016	
Yates 2016		Yates 2016		Yates 2016	
Yates 2016		Yates 2016		Yates 2016	
Yates 2016		Yates 2016		Yates 2016	
Yates 2016		Yates 2016		Yates 2016	
Yates 2016		Yates 2016		Yates 2016	
Yates 2016		Yates 2016		Yates 2016	
Yates 2016		Yates 2016		Yates 2016	
Yates 2016		Yates 2016		Yates 2016	
Yates 2016		Yates 2016		Yates 2016	
Yates 2016		Yates 2016		Yates 2016	
Yates 2016		Yates 2016		Yates 2016	
Yates 2016		Yates 2016		Yates 2016	
Yates 2016		Yates 2016		Yates 2016	
Yates 2016		Yates 2016		Yates 2016	
Yates 2016		Yates 2016		Yates 2016	
Yates 2016		Yates 2016		Yates 2016	
Yates 2016		Yates 2016		Yates 2016	
Yates 2016		Yates 2016		Yates 2016	
Yates 2016		Yates 2016		Yates 2016	
Yates 2016		Yates 2016		Yates 2016	
Yates 2016		Yates 2016		Yates 2016	
Yates 2016		Yates 2016		Yates 2016	
Yates 2016		Yates 2016		Yates 2016	
Yates 2016		Yates 2016		Yates 2016	
Yates 2016		Yates 2016		Yates 2016	
Yates 2016		Yates 2016		Yates 2016	
Yates 2016		Yates 2016		Yates 2016	
Yates 2016		Yates 2016		Yates 2016	
Yates 2016		Yates 2016		Yates 2016	
Yates 2016		Yates 2016		Yates 2016	
Yates 2016		Yates 2016		Yates 2016	
Yates 2016		Yates 2016		Yates 2016	
Yates 2016		Yates 2016		Yates 2016	
Yates 2016		Yates 2016		Yates 2016	
Yates 2016		Yates 2016		Yates 2016	
Yates 2016		Yates 2016		Yates 2016	
Yates 2016		Yates 2016		Yates 2016	
Yates 2016		Yates 2016		Yates 2016	
Yates 2016		Yates 2016		Yates 2016	
Yates 2016		Yates 2016		Yates 2016	
Yates 2016		Yates 2016		Yates 2016	
Yates 2016		Yates 2016		Yates 2016	
Yates 2016		Yates 2016		Yates 2016	
Yates 2016		Yates 2016		Yates 2016	
Yates 2016		Yates 2016		Yates 2016	
Yates 2016		Yates 2016		Yates 2016	
Yates 2016		Yates 2016		Yates 2016	
Yates 2016		Yates 2016		Yates 2016	
Yates 2016		Yates 2016		Yates 2016	
Yates 2016		Yates 2016		Yates 2016	
Yates 2016		Yates 2016		Yates 2016	
Yates 2016		Yates 2016		Yates 2016	
Yates 2016		Yates 2016		Yates 2016	
Yates 2016		Yates 2016		Yates 2016	
Yates 2016		Yates 2016		Yates 2016	
Yates 2016		Yates 2016		Yates 2016	
Yates 2016		Yates 2016		Yates 2016	
Yates 2016		Yates 2016		Yates 2016	
Yates 2016		Yates 2016		Yates 2016	
Yates 2016		Yates 2016		Yates 2016	
Yates 2016		Yates 2016		Yates 2016	
Yates 2016		Yates 2016		Yates 2016	
Yates 2016		Yates 2016		Yates 2016	
Yates 2016		Yates 2016		Yates 2016	
Yates 2016		Yates 2016		Yates 2016	
Yates 2016		Yates 2016		Yates 2016	
Yates 2016		Yates 2016		Yates 2016	
Yates 2016		Yates 2016		Yates 2016	
Yates 2016		Yates 2016		Yates 2016	
Yates 2016		Yates 2016		Yates 2016	
Yates 2016		Yates 2016		Yates 2016	
Yates 2016		Yates 2016		Yates 2016	
Yates 2016		Yates 2016		Yates 2016	
Yates 2016		Yates 2016		Yates 2016	
Yates 2016		Yates 2016		Yates 2016	
Yates 2016		Yates 2016		Yates 2016	
Yates 2016		Yates 2016		Yates 2016	
Yates 2016		Yates 2016		Yates 2016	
Yates 2016		Yates 2016		Yates 2016	
Yates 2016		Yates 2016		Yates 2016	
Yates 2016		Yates 2016		Yates 2016	
Yates 2016		Yates 2016		Yates 2016	
Yates 2016		Yates 2016		Yates 2016	
Yates 2016		Yates 2016		Yates 2016	
Yates 2016		Yates 2016		Yates 2016	
Yates 2016		Yates 2016		Yates 2016	
Yates 2016		Yates 2016		Yates 2016	
Yates 2016		Yates 2016		Yates 2016	
Yates 2016		Yates 2016		Yates 2016	
Yates 2016		Yates 2016		Yates 2016	
Yates 2016		Yates 2016		Yates 2016	
Yates 2016		Yates 2016		Yates 2016	
Yates 2016		Yates 2016		Yates 2016	
Yates 2016		Yates 2016		Yates 2016	
Yates 2016		Yates 2016		Yates 2016	
Yates 2016		Yates 2016		Yates 2016	
Yates 2016		Yates 2016		Yates 2016	
Yates 2016		Yates 2016		Yates 2016	

Conditions of Approval

**Legacy Reserves Operating LP
Cooper Jal Unit - 132, API 3002509639
T24S-R36E, Sec 24, 2310FSL & 990FEL
August 18, 2017**

1. **Within 90 days of these conditions of approval for the processed Electronic Submission #378799 notice of intent begin wellbore operations.**
2. **Operator is required to have the BLM approved NOI procedure with applicable conditions of approval on location during this workover operation.**
3. Notify BLM 575-393-3612 Lea Co as work begins. Plugging procedures are to be witnessed. If there is no response leave a voice mail with the API#, workover purpose, and a call back phone number.
4. Surface disturbance beyond the existing pad must have prior approval.
5. A closed loop system is required. The operator shall properly dispose of drilling/circulating contents at an authorized disposal site. Tanks are required for all operations, no excavated pits.
6. Functional H₂S monitoring equipment shall be on location.
7. 2000 (2M) Blow Out Prevention Equipment to be used. All BOPE and workover procedures shall establish fail safe well control. Ram(s) for the work string(s) used is required equipment. Manual BOP closure system including a blind ram and pipe ram(s) designed to close on all (hand wheels) equipment shall be installed regardless of BOP design. Function test the installed BOPE to 500psig when well conditions allow. Related equipment, (choke manifolds, kill trucks, gas vent or flare lines, etc.) shall be employed when needed for reasonable well control requirements.
8. All waste (i.e. trash, salts, chemicals, sewage, gray water, etc.) created as a result of work over operations shall be safely contained and disposed of properly at a waste disposal facility. No waste material or fluid shall be disposed of on the well location or surrounding area. Porto-johns and trash containers will be on-location during any other crew-intensive operations.
9. The BLM PET witness is to run tbq tally and agree to cement volumes and placement. Sample each plug for cement curing time and tag and/or pressure test as requested by BLM PET witness.
10. **Cementing procedure is subject to the next three numbered paragraphs.**
11. Mix cement plugs to cover a minimum of 100ft plus 10ft for every 1,000ft to the bottom of the plug, rounding the number of necessary sacks up to the nearest 5 sacks. Never use less than 25sx. Examples: A cement plug set at 8000 in 7" casing would require a min of 35sx. A 25sx plug in 5 ½" casing should cover 250ft, which may exceed 100ft plus 10ft per 1000ft.
12. Class H > 7500ft & C < 7500ft) cement plugs(s) will be necessary. For any plug that requires a tag or pressure test a minimum WOC time of 4 hours(C) & 8 hours(H) is recommended. Formation isolation plugs of Class "C" to be mixed 14.8#/gal, 1.32 ft³/sx, 6.3gal/sx water and "H" to be mixed 16.4#/gal, 1.06ft³/sx, 4.3gal/sx water.
13. Minimum requirement for mud placed between plugs is 25 sacks of salt water gel per 100 barrels in 9 lb/gal brine.

14. Set a balanced Class "C" plug on the Step 3 CIBP at 2975. Tag the plug with tubing above 2800 to cover base of salt.
15. Perforate at 1350. Sqz the perfs leaving cmt inside and outside of the 5 ½ csg with a top of cmt above 1150 to cover top of salt.
16. Leave the Pkr set with the displacement fluid trapped above the plug by closing the surface tbg valve. WOC 4hrs minimum, unset the pkr, and tag the plug with tbg.
17. Preform Steps 6 & 7 of procedure.
18. Perf at 60ft or below and circulate cmt to surface between the 8 5/8" and 5 ½" csgs.
19. Set a dry hole marker.
20. File **subsequent sundry** Form 3160-5 within 30 days of workover procedures. Include (dated daily) descriptions of the well work, i.e. procedure descriptions and setting depths of each plug in the subsequent sundry.

Reclamation Objectives and Procedures

In Reply Refer To: 1310

Reclamation Objective: At final abandonment, well locations, production facilities, and access roads must undergo "final" reclamation so that the character and productivity of the land and water are restored.

The long-term objective of final reclamation is to set the course for eventual ecosystem restoration, including the restoration of the natural vegetation community, hydrology, and wildlife habitats. In most cases this means returning the land to a condition approximating or equal to that which existed prior to the disturbance. The final goal of reclamation is to restore the character of the land and water to its pre-disturbance condition. The operator is generally not responsible for achieving full ecological restoration of the site. Instead, the operator must achieve the short-term stability, visual, hydrological, and productivity objectives of the surface management agency and take steps necessary to ensure that long-term objectives will be reached through natural processes.

To achieve these objectives, remove any and all contaminants, scrap/trash, equipment, pipelines and powerlines. Strip and remove caliche, contour the location to blend with the surrounding landscape, re-distribute the native soils, provide erosion control as needed, rip and seed as needed. This will apply to well pads, facilities, and access roads. Barricade all access road(s) at the starting point. If reserve pits have not been adequately reclaimed due to salts or other contaminants, propose a plan for BLM approval to provide restoration of the pit area.

1. The Application for Permit to Drill or Reenter (APD, Form 3160-3), Surface Use Plan of Operations should have included adequate measures for stabilization and reclamation of disturbed lands. Oil and Gas operators must plan for reclamation, both interim and final, up front in the APD process as per Onshore Oil and Gas Order No. 1.
2. For locations and/or access roads not having an approved plan, or an inadequate plan for surface reclamation the operator must submit a proposal describing the procedures for reclamation. The appropriate time for submittal would be when filing the Notice of

Intent, or with the Subsequent Sundry Report of Abandonment on Form 3160-5. The final reclamation goal is to be completed within 6 months of wellbore abandonment.

3. With an approved Surface Use Plan of Operation and/or an approved Sundry Notice, you are free to proceed with reclamation as per approved APD. If you have issues or concerns, contact a BLM specialist to assist you. It may be in your interest to have a BLM specialist look at the location and access road prior to the removal of reclamation equipment to ensure that it meets BLM objectives.
4. Upon reclamation conclusion submit a Form 3160-5, Subsequent Report of Reclamation. This will prompt a BLM specialist to inspect the location to verify work was completed as per approved plans.
5. The BLM approved Subsequent Report of Reclamation will be your notice that the native soils, contour and seedbed have been tentatively reestablished. If the objectives have not been met BLM will be notify the operator of the required corrective actions.
6. It is the responsibility of the operator to monitor these locations and/or access roads until such time the full BLM objective has been met. If after two growing seasons the location and/or access roads are not showing the potential for successful revegetation, additional actions may be needed. When you feel the full BLM objectives have been met, submit a Final Abandonment Notice (FAN) Form 3160-5, stating that all reclamation requirements have been achieved and the location and/or access road is ready for a final abandonment inspection.
7. At this time a BLM specialist will again inspect the location and/or access road. If the native soils and contour have been restored, and the revegetation is successful, the FAN will be approved, releasing the operator of any further liability for the location and/or access road. If the location and/or access road have not achieved the objective, you will be notified as to additional work needed or additional time being needed to achieve the objective.

If there are any questions, please feel free to contact any of the following specialists:

Jim Amos
Supervisory Environmental Protection Specialist
575-234-5909, 575-361-2648 (Cell)

Robertson, Jeffery
Natural Resource Specialist
575-234-2230, 575-706-1920 (Cell)

Trishia Bad Bear
Natural Resource Specialist
575-393-3612, 575-390-2258 (Cell)

Vance Wolf
Natural Resource Specialist
575-234-5979

Jesse Bassett
Natural Resource Specialist
575-234-5913, 575-499-5114 (Cell)

Brooke Wilson
Natural Resource Specialist
575-234-6237

Paul Murphy
Natural Resource Specialist
757-234-5975, 575-885-9264 (Cell)

Henryetta Price
Environmental Protection Specialist
575-234-5951, 575-706-2780 (Cell)

Arthur Arias
Environmental Protection Specialist
575-234-6230, 575-499-3378 (Cell)

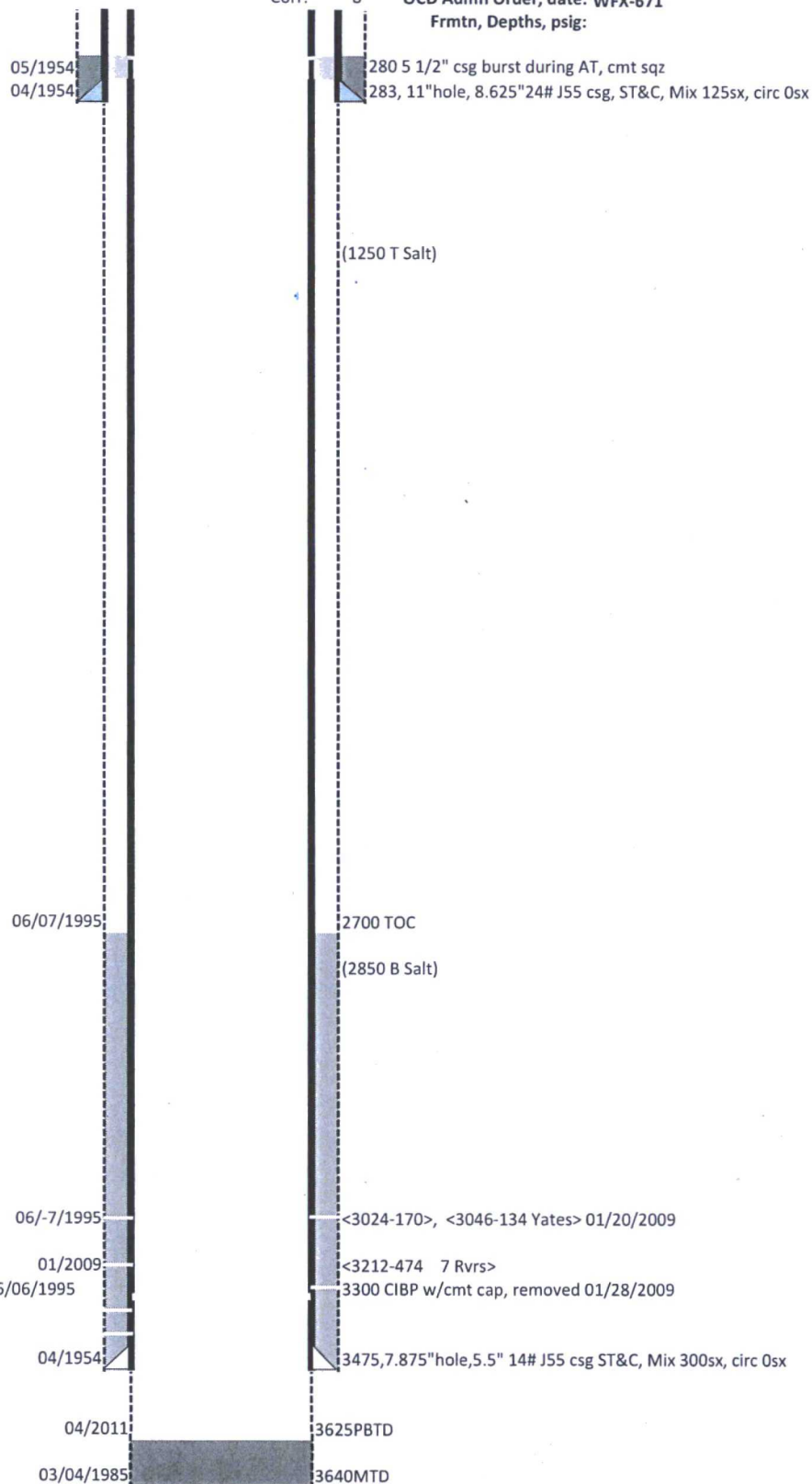
Shelly Tucker
Environmental Protection Specialist
575-234-5905, 575-361-0084 (Cell)

Operator: Legacy Reserves Operating LP
Surface Lease: LC063965 BHL: LC063965
Case No: NM70926x Unit Agreement
Subsurface Concerns for Casing Designs:

Well Status: Inj
Spud date: 4/8/1954
Plug'd Date:
Reentry Date:

Well: COOPER JAL UNIT-132
API: 3002509639
@ Srfce: T24S-R36E,24.2310s990e
@ MTD: T24S-R36E,24.2310s990e
Estate: P/V/F
CWDW, R of W:
OCD Admn Order, date: WFX-671
Frmtn, Depths, psig:

KB: 3315
GL: 3307
Corr: 8



11/30/1993 Test csg to 500-470 psig 30m
12/01/1993 CTI
06/09/1995 MIT held 560psig 20m
08/17/2000 MIT held 530psig 30m
10/31/2003 MIT held 520psig 30m
01/26/2009 MIT held 360 -340psig 30m
04/21/2011 MIT illegible chart

Diagram last updated: 08/18/2017