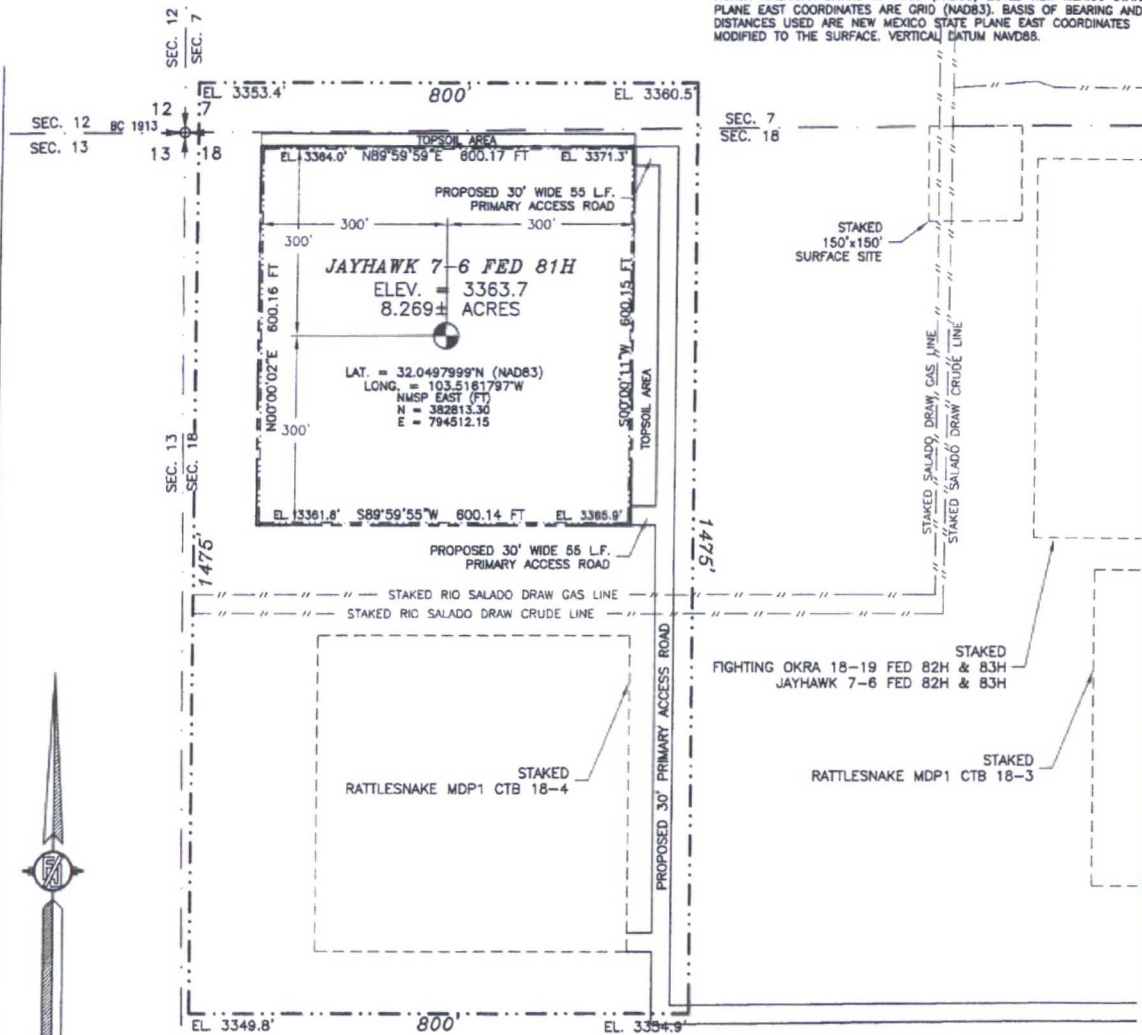


SECTION 18, TOWNSHIP 26 SOUTH, RANGE 34 EAST, N.M.P.M.
LEA COUNTY, STATE OF NEW MEXICO

SITE MAP

NOTE: LATITUDE AND LONGITUDE COORDINATES ARE SHOWN USING THE NORTH AMERICAN DATUM OF 1983 (NAD83) LISTED NEW MEXICO STATE PLANE EAST COORDINATES ARE GRID (NAD83). BASIS OF BEARING AND DISTANCES USED ARE NEW MEXICO STATE PLANE EAST COORDINATES MODIFIED TO THE SURFACE. VERTICAL DATUM NAVD88.



025 125 250 500

SCALE 1" = 250'

DIRECTIONS TO LOCATION

FROM THE INTERSECTION OF NM HWY 128 (JAL HWY) AND CR 2 (BATTLE AXE ROAD) GO SOUTH ON BATTLE AXE ROAD 12.31 MILES, TURN LEFT ON A CALICHE LEASE ROAD GO SOUTH 0.65 MILE TO PIPELINE ROAD TURN LEFT GO EAST 1.81 MILES TURN RIGHT AT CALICHE LEASE ROAD GO SOUTH 1.28 MILES TO A PROPOSED ROAD SURVEY, FOLLOW ROAD SURVEY WEST 0.70 MILE, THEN NORTH 790', THEN WEST 55' TO THE SOUTHWEST CORNER OF PAD FOR THIS LOCATION.

DEVON ENERGY PRODUCTION COMPANY, L.P.

JAYHAWK 7-6 FED 81H

LOCATED 325 FT. FROM THE NORTH LINE

AND 420 FT. FROM THE WEST LINE OF

SECTION 18, TOWNSHIP 26 SOUTH,

RANGE 34 EAST, N.M.P.M.

LEA COUNTY, STATE OF NEW MEXICO

JANUARY 9, 2017

SURVEY NO. 4810A

MADRON SURVEYING, INC.

301 SOUTH CANAL
(575) 234-3341

CARLSBAD, NEW MEXICO

**PROPOSED INTERIM SITE RECLAMATION
FOR JAYHAWK 7-6 FED 81H
SECTION 18, TOWNSHIP 26 SOUTH, RANGE 34 EAST, N.M.P.M.
LEA COUNTY, STATE OF NEW MEXICO**

TOPSOIL AREA

180'

215'

25'

25'

120'

120'

120'

120'

180'

600'

JAYHAWK 7-6 FED 81H

240'

180'

395'

TOPSOIL AREA

PROPOSED 30' PRIMARY ACCESS ROAD

DENOTES
RECLAMATION AREA
5.995± ACRES RECLAMATION AREA

012 60 120 240
SCALE 1" = 120'

**DEVON ENERGY PRODUCTION COMPANY, L.P.
JAYHAWK 7-6 FED 81H
LOCATED 325 FT. FROM THE NORTH LINE
AND 420 FT. FROM THE WEST LINE OF
SECTION 18, TOWNSHIP 26 SOUTH,
RANGE 34 EAST, N.M.P.M.
LEA COUNTY, STATE OF NEW MEXICO**

JANUARY 9, 2017

SURVEY NO. 4810A

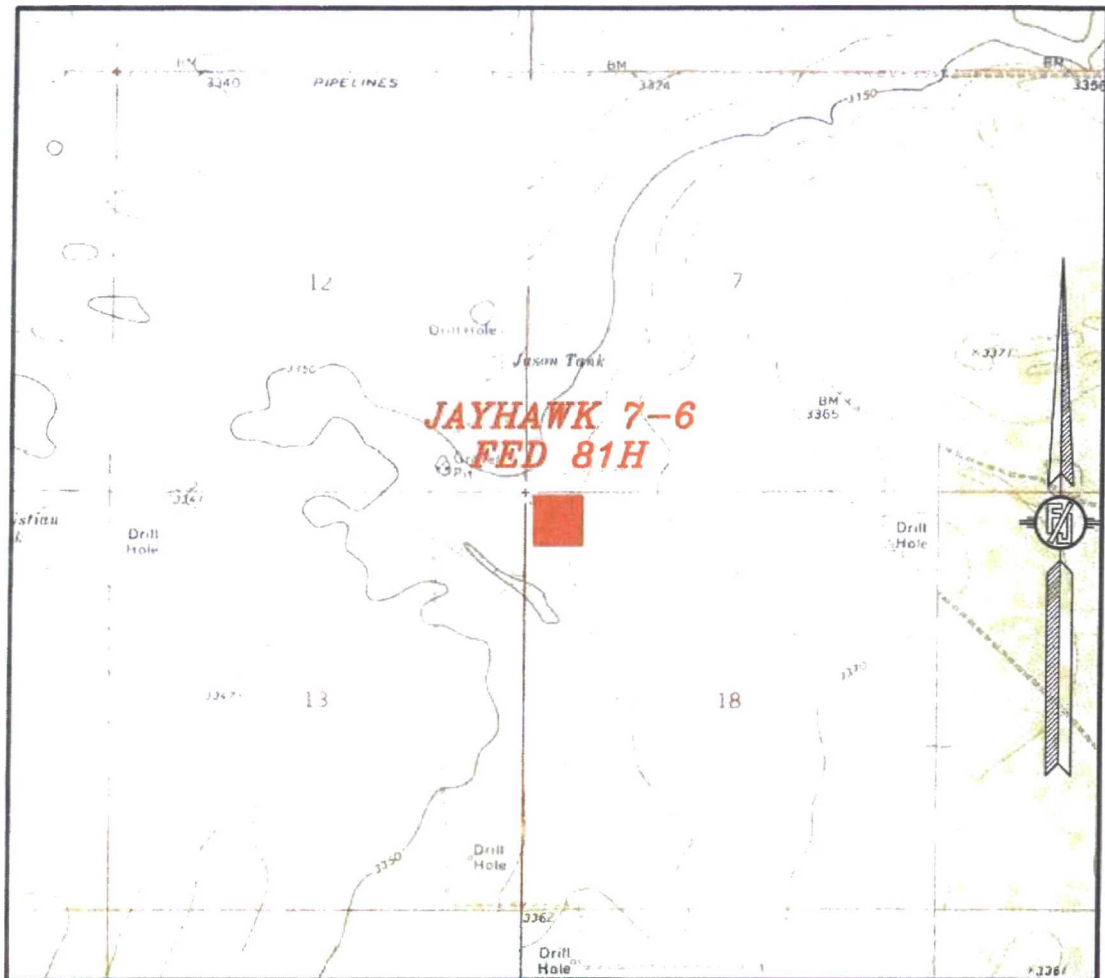
MADRON SURVEYING, INC. 301 SOUTH CANAL CARLSBAD, NEW MEXICO
(575) 234-3341

JANUARY 9, 2017

SURVEY NO. 4810A

MADRON SURVEYING, INC. 301 SOUTH CANAL (575) 234-3341 CARLSBAD, NEW MEXICO

SECTION 18, TOWNSHIP 26 SOUTH, RANGE 34 EAST, N.M.P.M.
LEA COUNTY, STATE OF NEW MEXICO
LOCATION VERIFICATION MAP



USGS QUAD MAP:
PADUCA BREAKS EAST

NOT TO SCALE

DEVON ENERGY PRODUCTION COMPANY, L.P.

JAYHAWK 7-6 FED 81H

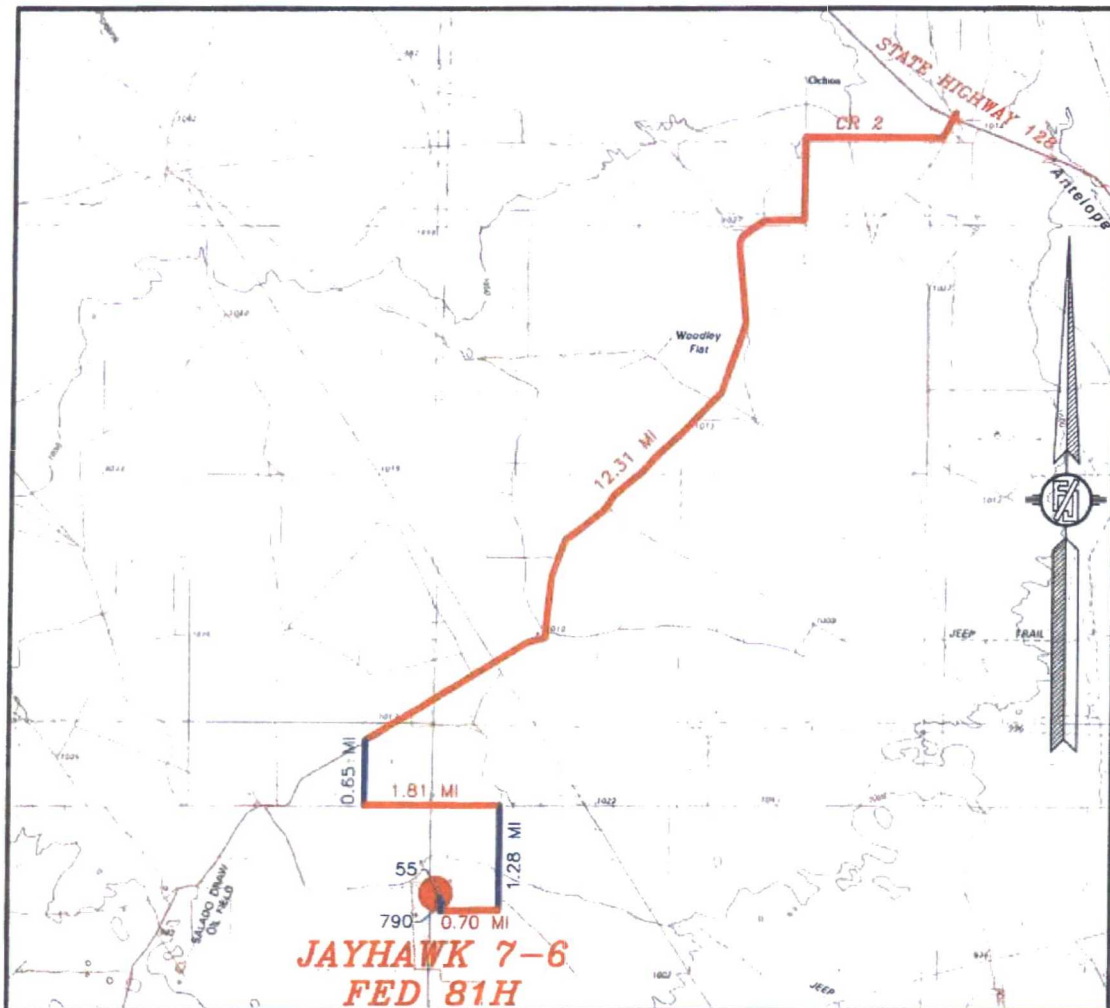
LOCATED 325 FT. FROM THE NORTH LINE
AND 420 FT. FROM THE WEST LINE OF
SECTION 18, TOWNSHIP 26 SOUTH,
RANGE 34 EAST, N.M.P.M.
LEA COUNTY, STATE OF NEW MEXICO

JANUARY 9, 2017

MADRON SURVEYING, INC. 301 SOUTH CANAL (575) 234-3341 CARLSBAD, NEW MEXICO

SURVEY NO. 4810A

SECTION 18, TOWNSHIP 26 SOUTH, RANGE 34 EAST, N.M.P.M.
LEA COUNTY, STATE OF NEW MEXICO
VICINITY MAP



DISTANCES IN MILES

NOT TO SCALE

DEVON ENERGY PRODUCTION COMPANY, L.P.

JAYHAWK 7-6 FED 81H

LOCATED 325 FT. FROM THE NORTH LINE

AND 420 FT. FROM THE WEST LINE OF

SECTION 18, TOWNSHIP 26 SOUTH,

RANGE 34 EAST, N.M.P.M.

LEA COUNTY, STATE OF NEW MEXICO

JANUARY 9, 2017

DIRECTIONS TO LOCATION

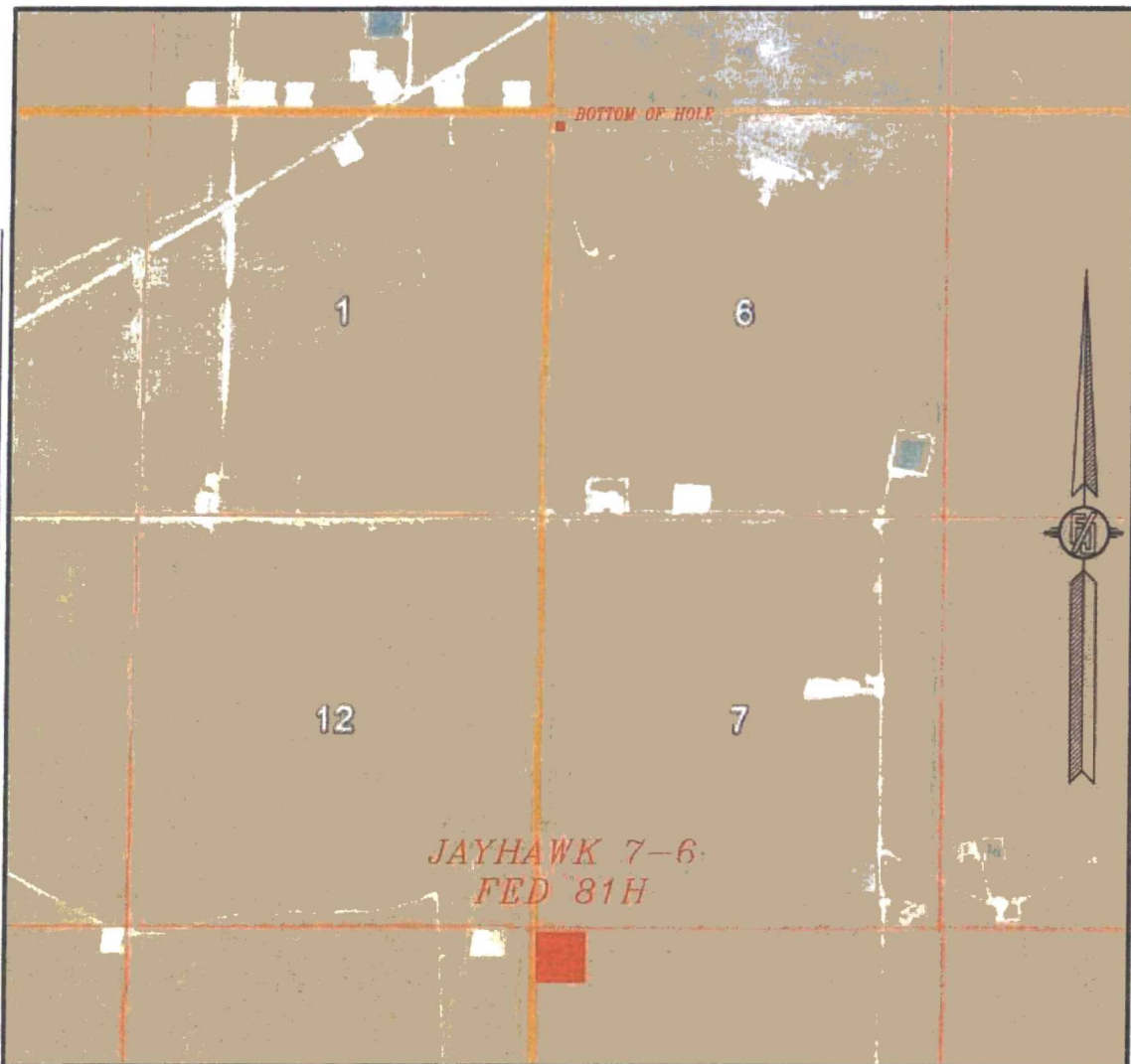
FROM THE INTERSECTION OF NM HWY 128 (JAL HWY) AND CR 2 (BATTLE AXE ROAD) GO SOUTH ON BATTLE AXE ROAD 12.31 MILES, TURN LEFT ON A CALICHE LEASE ROAD GO SOUTH 0.65 MILE TO PIPELINE ROAD TURN LEFT GO EAST 1.81 MILES TURN RIGHT AT CALICHE LEASE ROAD GO SOUTH 1.28 MILES TO A PROPOSED ROAD SURVEY, FOLLOW ROAD SURVEY WEST 0.70 MILE, THEN NORTH 790', THEN WEST 55' TO THE SOUTHWEST CORNER OF PAD FOR THIS LOCATION.

SURVEY NO. 4810A

MADRON SURVEYING, INC. 301 SOUTH CANAL (575) 234-3341

CARLSBAD, NEW MEXICO

SECTION 18, TOWNSHIP 26 SOUTH, RANGE 34 EAST, N.M.P.M.
LEA COUNTY, STATE OF NEW MEXICO
AERIAL PHOTO



NOT TO SCALE
AERIAL PHOTO:
GOOGLE EARTH
NOVEMBER 2015

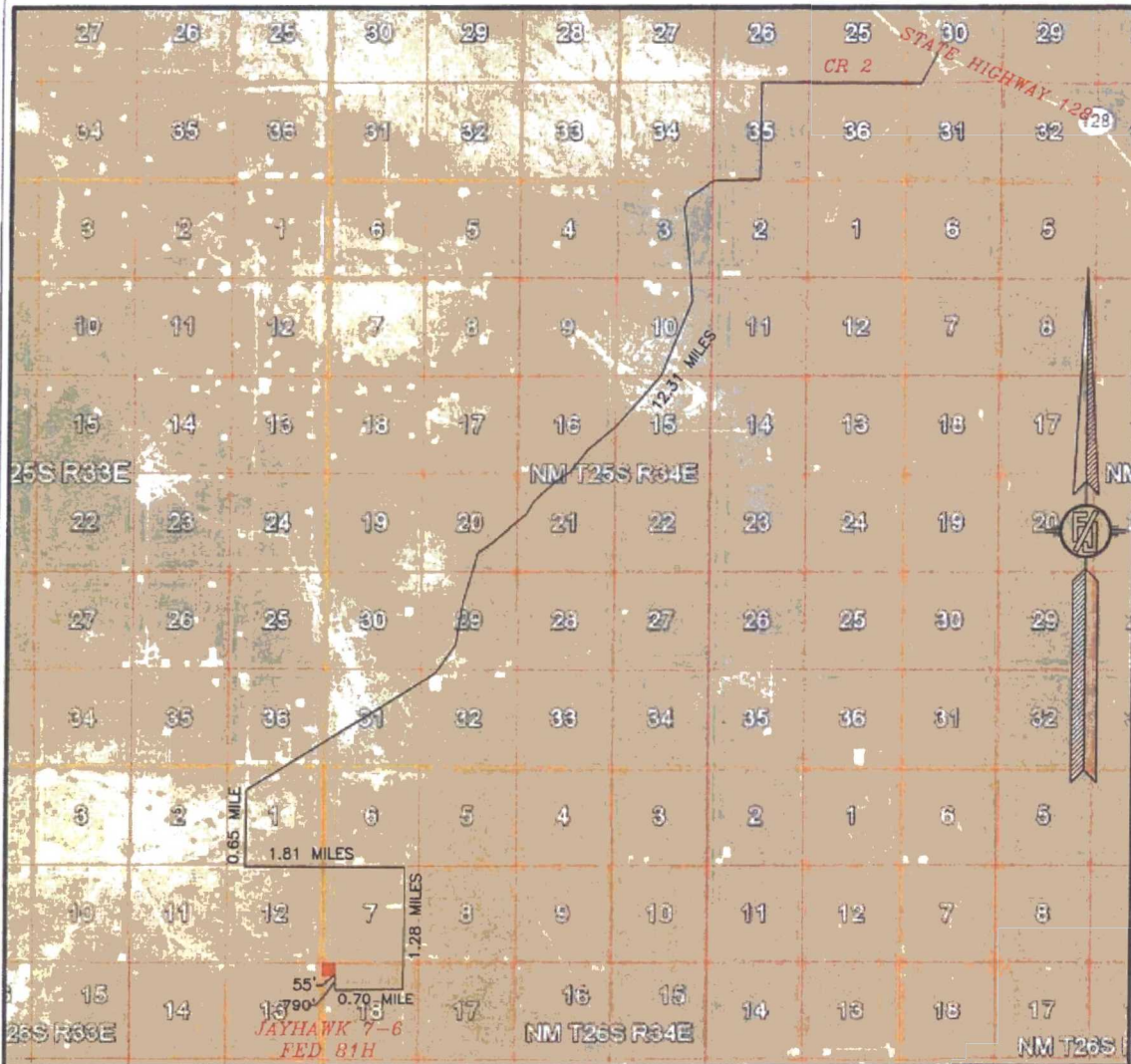
DEVON ENERGY PRODUCTION COMPANY, L.P.
JAYHAWK 7-6 FED 81H
LOCATED 325 FT. FROM THE NORTH LINE
AND 420 FT. FROM THE WEST LINE OF
SECTION 18, TOWNSHIP 26 SOUTH,
RANGE 34 EAST, N.M.P.M.
LEA COUNTY, STATE OF NEW MEXICO

JANUARY 9, 2017

SURVEY NO. 4810A

MADRON SURVEYING, INC. 301 SOUTH CANAL (575) 234-3341 CARLSBAD, NEW MEXICO

SECTION 18, TOWNSHIP 26 SOUTH, RANGE 34 EAST, N.M.P.M.
LEA COUNTY, STATE OF NEW MEXICO
ACCESS AERIAL ROUTE MAP



NOT TO SCALE
AERIAL PHOTO:
GOOGLE EARTH
NOVEMBER 2015

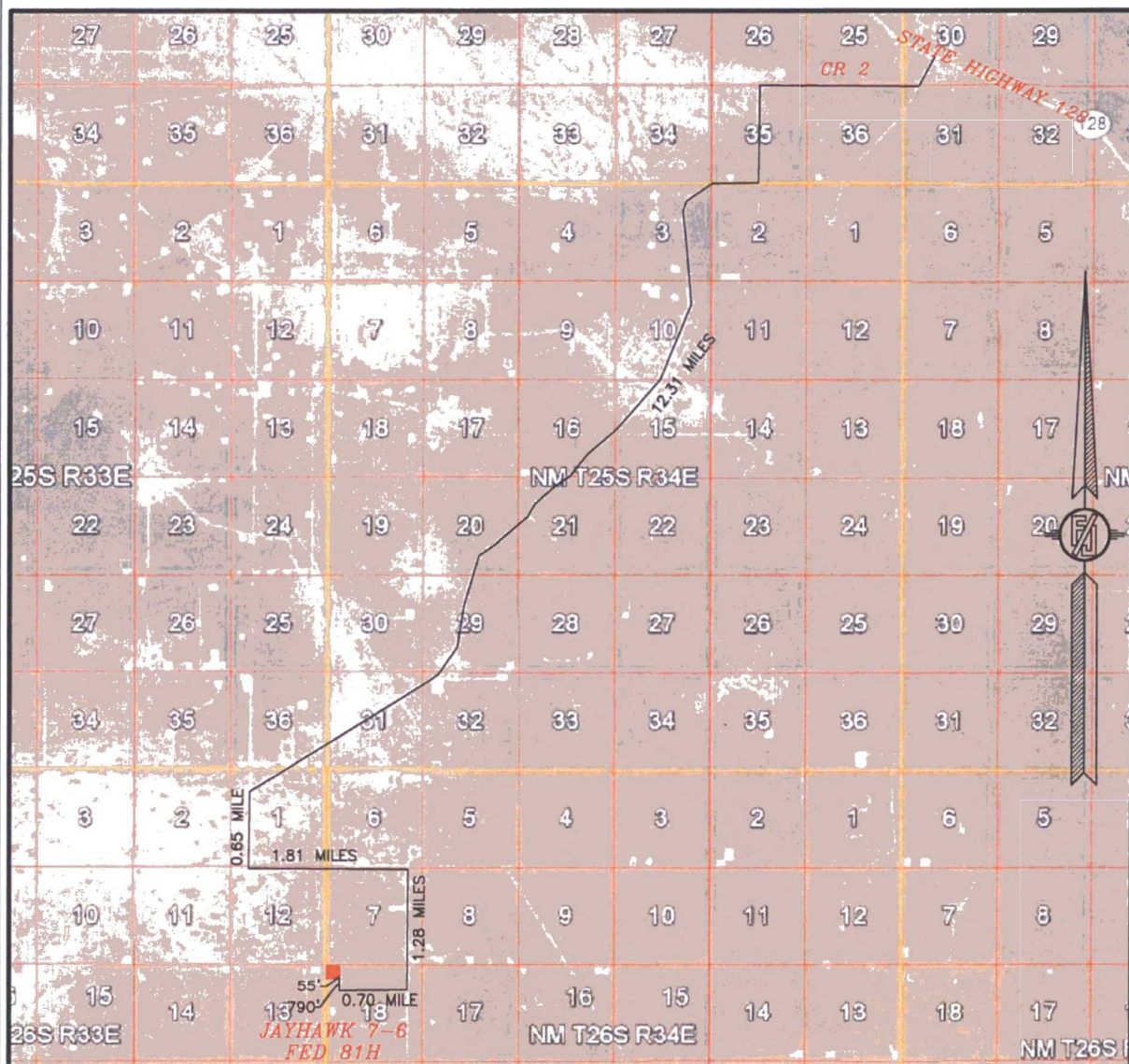
DEVON ENERGY PRODUCTION COMPANY, L.P.
JAYHAWK 7-6 FED 81H
LOCATED 325 FT. FROM THE NORTH LINE
AND 420 FT. FROM THE WEST LINE OF
SECTION 18, TOWNSHIP 26 SOUTH,
RANGE 34 EAST, N.M.P.M.
LEA COUNTY, STATE OF NEW MEXICO

JANUARY 9, 2017

SURVEY NO. 4810A

MADRON SURVEYING, INC. 301 SOUTH CANAL (575) 234-3341 CARLSBAD, NEW MEXICO

SECTION 18, TOWNSHIP 26 SOUTH, RANGE 34 EAST, N.M.P.M.
LEA COUNTY, STATE OF NEW MEXICO
ACCESS AERIAL ROUTE MAP



NOT TO SCALE
AERIAL PHOTO:
GOOGLE EARTH
NOVEMBER 2015

DEVON ENERGY PRODUCTION COMPANY, L.P.

JAYHAWK 7-6 FED 81H

LOCATED 325 FT. FROM THE NORTH LINE
AND 420 FT. FROM THE WEST LINE OF
SECTION 18, TOWNSHIP 26 SOUTH,
RANGE 34 EAST, N.M.P.M.
LEA COUNTY, STATE OF NEW MEXICO

JANUARY 9, 2017

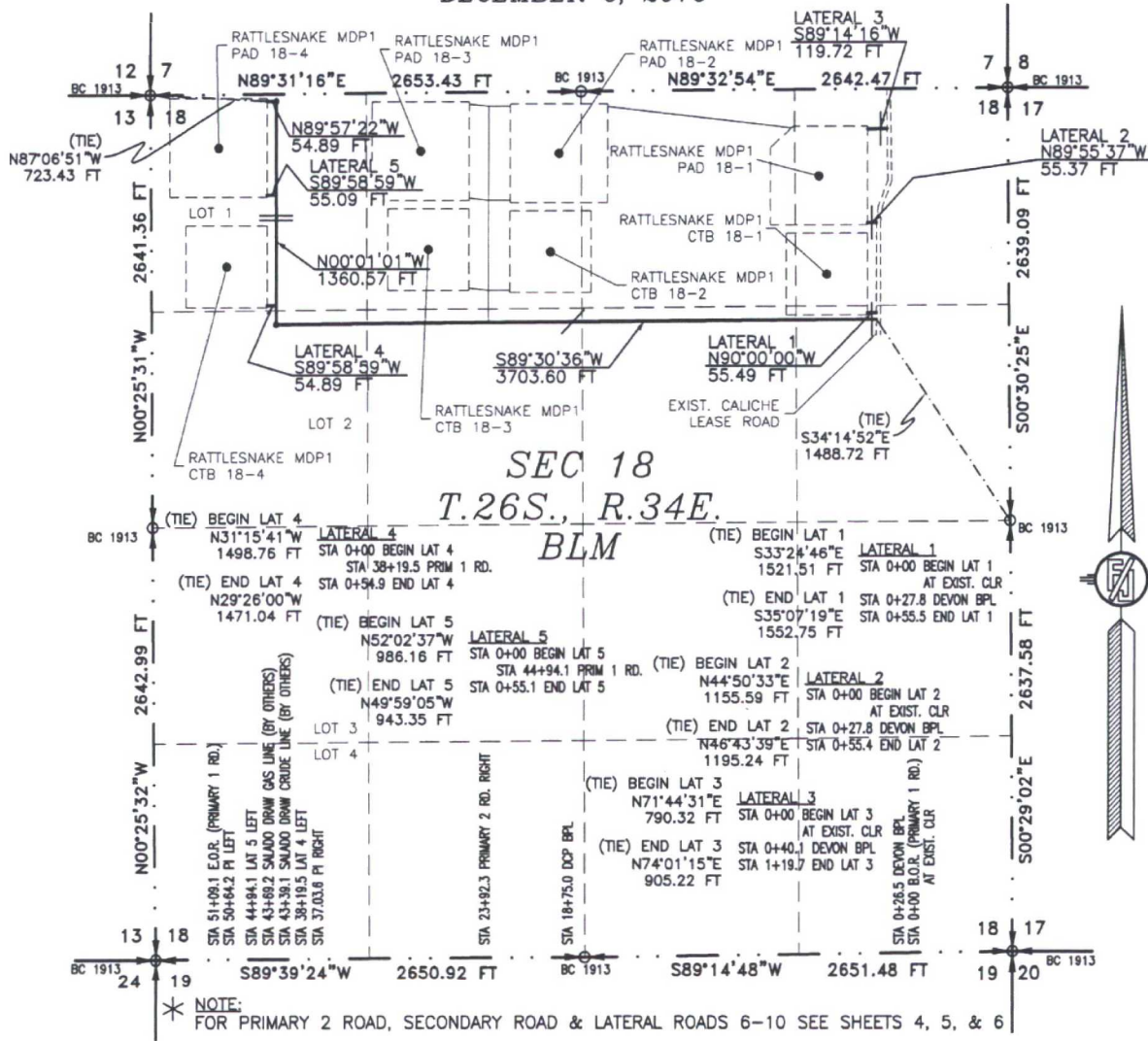
SURVEY NO. 4810A

MADRON SURVEYING, INC. 301 SOUTH CANAL (575) 234-3341 CARLSBAD, NEW MEXICO

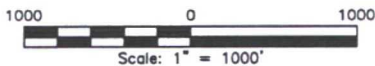
ACCESS ROAD PLAT (764068R)

ACCESS ROADS TO CONNECT THE RATTLESNAKE MDP1 PAD/CTB 18-1, 18-2, 18-3, & 18-4

DEVON ENERGY PRODUCTION COMPANY, L.P.
CENTERLINE SURVEY OF AN ACCESS ROAD CROSSING
SECTION 18, TOWNSHIP 26 SOUTH, RANGE 34 EAST, N.M.P.M.
LEA COUNTY, STATE OF NEW MEXICO
DECEMBER 6, 2016



SEE NEXT SHEET (2-8) FOR DESCRIPTION



GENERAL NOTES

- 1.) THE INTENT OF THIS ROUTE SURVEY IS TO ACQUIRE AN EASEMENT.
- 2.) BASIS OF BEARING AND DISTANCE IS NMSP EAST (NAD83) MODIFIED TO SURFACE COORDINATES. NAD 83 (FEET) AND NAVD 88 (FEET) COORDINATE SYSTEMS USED IN THE SURVEY.

SHEET: 1-8

MADRON SURVEYING, INC. CARLSBAD, NEW MEXICO

SURVEYOR CERTIFICATE

I, FILMON F. JARAMILLO, A NEW MEXICO PROFESSIONAL SURVEYOR NO. 12797, HEREBY CERTIFY THAT I HAVE CONDUCTED AND AM RESPONSIBLE FOR THIS SURVEY, THAT THIS SURVEY IS TRUE AND CORRECT TO THE BEST OF MY KNOWLEDGE AND BELIEF, AND THAT THIS SURVEY AND PLAT MEET THE MINIMUM STANDARDS FOR LAND SURVEYING IN THE STATE OF NEW MEXICO.

IN WITNESS WHEREOF, THIS CERTIFICATE IS EXECUTED AT CARLSBAD,

NEW MEXICO, THIS 16 DAY OF DECEMBER 2016

FILMON F. JARAMILLO, PLS. 12797
MADRON SURVEYING, INC.
301 SOUTH CANAL
CARLSBAD, NEW MEXICO 88220
Phone (575) 234-3341

SURVEY NO. 5081