

Submit One Copy To Appropriate District

Office

District I

1625 N. French Dr., Hobbs, NM 88240

District II

811 S. First St., Artesia, NM 88210

District III

1000 Rio Brazos Rd., Aztec, NM 87410

District IV

1220 S. St. Francis Dr., Santa Fe, NM 87505

State of New Mexico

Energy, Minerals and Natural Resources

Form C-103

Revised November 3, 2011

HOBBS OCD

SEP 11 2017

RECEIVED

OIL CONSERVATION DIVISION

1220 South St. Francis Dr.

Santa Fe, NM 87505

WELL API NO.

30-025-01931

5. Indicate Type of Lease

STATE ☒ FEE ☐

6. State Oil & Gas Lease No.

7. Lease Name or Unit Agreement Name
Northeast Kemnitz

8. Well Number #2

9. OGRID Number
228937

10. Pool name or Wildcat
Kemnitz, Lower Wolfcamp

SUNDRY NOTICES AND REPORTS ON WELLS

(DO NOT USE THIS FORM FOR PROPOSALS TO DRILL OR TO DEEPEN OR PLUG BACK TO A DIFFERENT RESERVOIR. USE "APPLICATION FOR PERMIT" (FORM C-101) FOR SUCH PROPOSALS.)

1. Type of Well: ☐ Oil Well ☒ Gas Well ☐ Other

2. Name of Operator

Matador Production Company

3. Address of Operator

5400 LBJ Freeway Suite 1500, Dallas, TX 75240

4. Well Location

Unit Letter: G : 1980 feet from the N line and 1980 feet from the E line

Section 22 Township 16S Range 34E NMPM County Lea

11. Elevation (Show whether DR, RKB, RT, GR, etc.)

12. Check Appropriate Box to Indicate Nature of Notice, Report or Other Data

NOTICE OF INTENTION TO:

PERFORM REMEDIAL WORK ☐ PLUG AND ABANDON ☐

TEMPORARILY ABANDON ☐ CHANGE PLANS ☐

PULL OR ALTER CASING ☐ MULTIPLE COMPL ☐

OTHER: ☐

SUBSEQUENT REPORT OF:

REMEDIAL WORK ☐ ALTERING CASING ☐

COMMENCE DRILLING OPNS. ☐ P AND A ☐

CASING/CEMENT JOB ☐

☒ Mill down RBP and run cased hole logs

13. Describe proposed or completed operations. (Clearly state all pertinent details, and give pertinent dates, including estimated date of starting any proposed work). SEE RULE 19.15.7.14 NMAC. For Multiple Completions: Attach wellbore diagram of proposed completion or recompletion.

8/2017:

MIRU WO Rig. Pulled Rods and tbg, Noted heavy corrosion on bottom joints of tubing. Elected to not attempt to retrieve RBP (packer with K-valve) due to likelihood of corrosion.

TIH with tbg and wash over shoe. Milled RBP while pushing down hole. RBP became stuck at 13,060' and could not be pushed down any deeper.

* New PBTD at 13,060'. *

Cased-hole logs were ran from PBTD to intermediate casing shoe (4,614'). TOC found to be 9,090' by CBL.

Well is currently shut in during the evaluation of the logs. Future activity will be determined after evaluation is complete.

Spud Date:

5/8/1980

Rig Release Date:

SIGNATURE

TITLE

Engineer

DATE 9/6/17

TYPE OR PRINT NAME:

Christopher Villarreal

E-MAIL:

cvillarreal@matadorresources.com

PHONE:

972-371-5471

For State Use Only

APPROVED BY:

TITLE

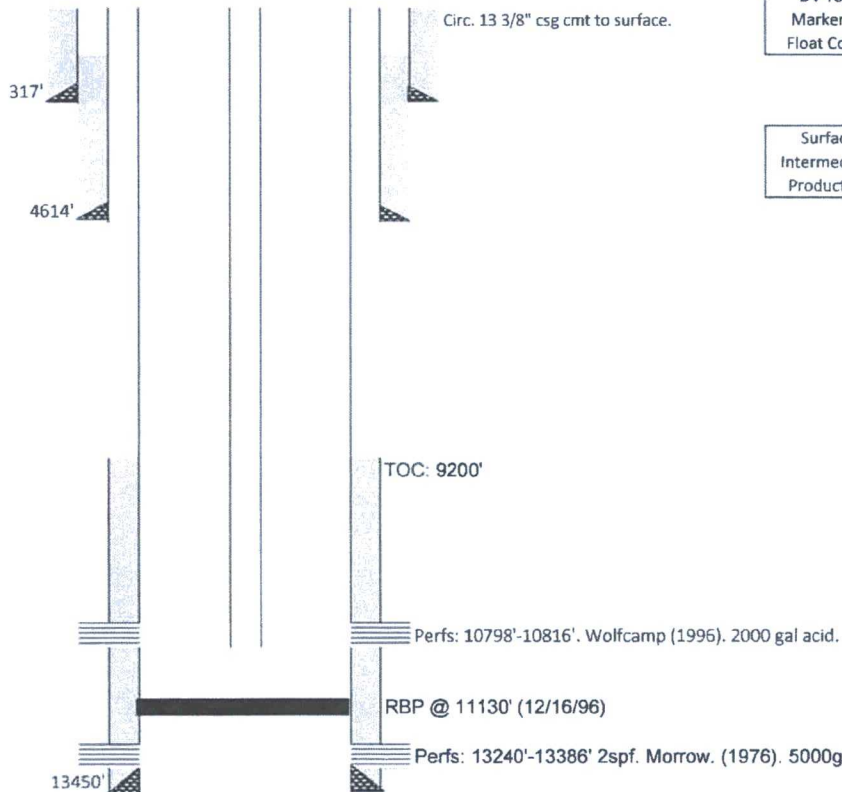
DATE

Conditions of Approval (if any):

MATADOR PRODUCTION COMPANY
Northeast Kemnitz # 2
 1980' FNL & 1980' FEL Sec 22 - 16S - 34E
 Lea County, NM
 API: 30-025-01931

WELLBORE SCHEMATIC as of July 2017

Spud: 5/8/1960 Reentry: 1961 & 11/20/1976



Casing Information							
	Hole Size	Casing Size	Type	Weight lb/ft	Joints	Depth Set	Date Set
Surface	17 1/2	13 3/8	H-40	48	unk	317	5/8/1960
Intermediate	12 1/4	8 5/8	J-55, 8R	24	111	4614	5/22/1960
Production	7 7/8	5 1/2	N80/P110, LT&C/Butress	17	310	13,450	11/20/1976
	DV Tool Marker Jt. Float Collar						

Cementing Record	
Surface	400sx reg 4% gel cmt. Circulated to surface.
Intermediate	1600sx gel cmt & 150sx reg neat cmt. Did Not circulate.
Production	1000sx cmt. TOC @ 9200'

Tubing		Rods		Geologic Markers	
Joints	350	Total	UNK	Strawn	11990
Diam.	2 3/8	7/8"		Atoka	12298
Grade	N-80	3/4"			
Weight		7/8"			
Packer		1"			
PBTD		Pony			
TA	2 3/8x5.5	Pump			
SN	2 3/8 cup type				
Bull Plug	w/30' tbg jt				
ON-OFF Tool					

Anchor set at 10,840'

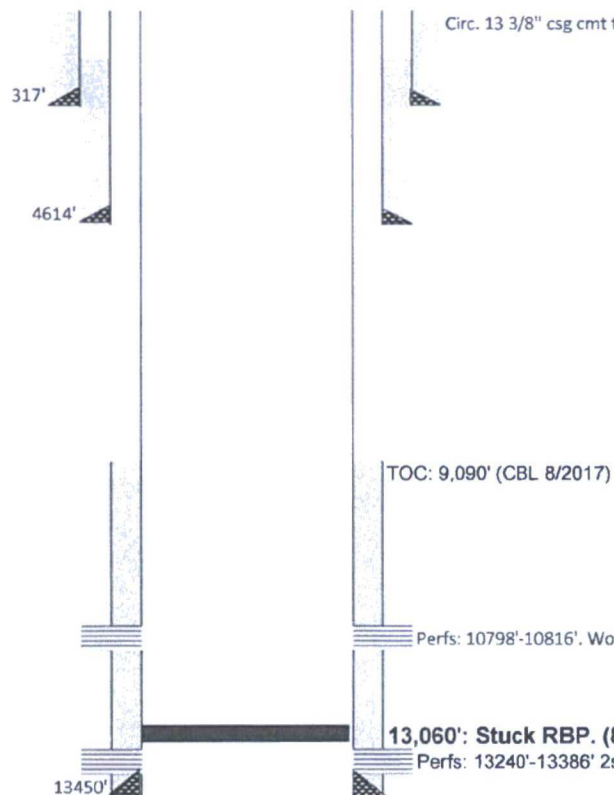
*tbg details as of 1996. Tbg has been pulled at least 3 times since with no records of the configuration it was run back in with.

Well originally drilled to 10850' in 1960. Found to be dry & P&A'd in July 1960.
 Reentered & deepened to 11585' in 1961, found to be dry and P&A'd. Well
 reentered again in 1976 and drilled to 13450'.

MATADOR PRODUCTION COMPANY
Northeast Kemnitz # 2
 1980' FNL & 1980' FEL Sec 22 - 16S - 34E
 Lea County, NM
 API: 30-025-01931

WELLBORE SCHEMATIC as of Aug 31, 2017

Spud: 5/8/1960 Reentry: 1961 & 11/20/1976



Circ. 13 3/8" csg cmt to surface.

Casing Information

	Hole Size	Casing Size	Type	Weight lb/ft	Joints	Depth Set	Date Set
Surface	17 1/2	13 3/8	H-40	48	unk	317	5/8/1960
Intermediate	12 1/4	8 5/8	J-55, 8R	24	111	4614	5/22/1960
Production	7 7/8	5 1/2	N80/P110, LT&C/Butress	17	310	13,450	11/20/1976
	DV Tool Marker Jt. Float Collar						

Cementing Record

Surface	400sx reg 4% gel cmt. Circulated to surface.
Intermediate	1600sx gel cmt & 150sx reg neat cmt. Did Not circulate.
Production	1000sx cmt. TOC @ 9090'

Tubing		Rods		Geologic Markers	
Joints		Total		Strawn	11990
Diam.		7/8"		Atoka	12298
Grade		3/4"			
Weight		7/8"			
Packer		1"			
PBTD		Pony			
TA		Pump			
SN					
Bull Plug					
ON-OFF Tool					

Well originally drilled to 10850' in 1960. Found to be dry & P&A'd in July 1960.
 Reentered & deepened to 11585' in 1961, found to be dry and P&A'd. Well
 reentered again in 1976 and drilled to 13450'.