

DISTRICT I
1625 N. French Dr., Hobbs, NM 88240
Phone (505) 393-8161 Fax: (505) 393-0720

DISTRICT II
811 S. First St., Artesia, NM
Phone (505) 748-1283 Fax: (505) 748-0720

DISTRICT III
1000 Rio Brazos Rd., Aztec, NM
Phone (505) 334-8178 Fax: (505) 334-817

DISTRICT IV
1220 S. St. Francis Dr., Santa Fe, NM 87505
Phone (505) 476-3460 Fax: (505) 476-3462

State of New Mexico
Energy, Minerals and Natural Resources Department

Form C-102
Revised August 1, 2011

Submit one copy to appropriate
District Office

OIL CONSERVATION DIVISION

1220 South St. Francis Dr.
Santa Fe, New Mexico 87505

RECEIVED

WELL LOCATION AND ACREAGE DEDICATION PLAT

☐ AMENDED REPORT

API Number 30-025-41672	Pool Code 5535	Pool Name Berry; BoneSpring. North
Property Code	Property Name BERRY APN STATE	Well Number 5H
OGRID No. 7377	Operator Name EOG RESOURCES, INC	Elevation 3718

Surface Location

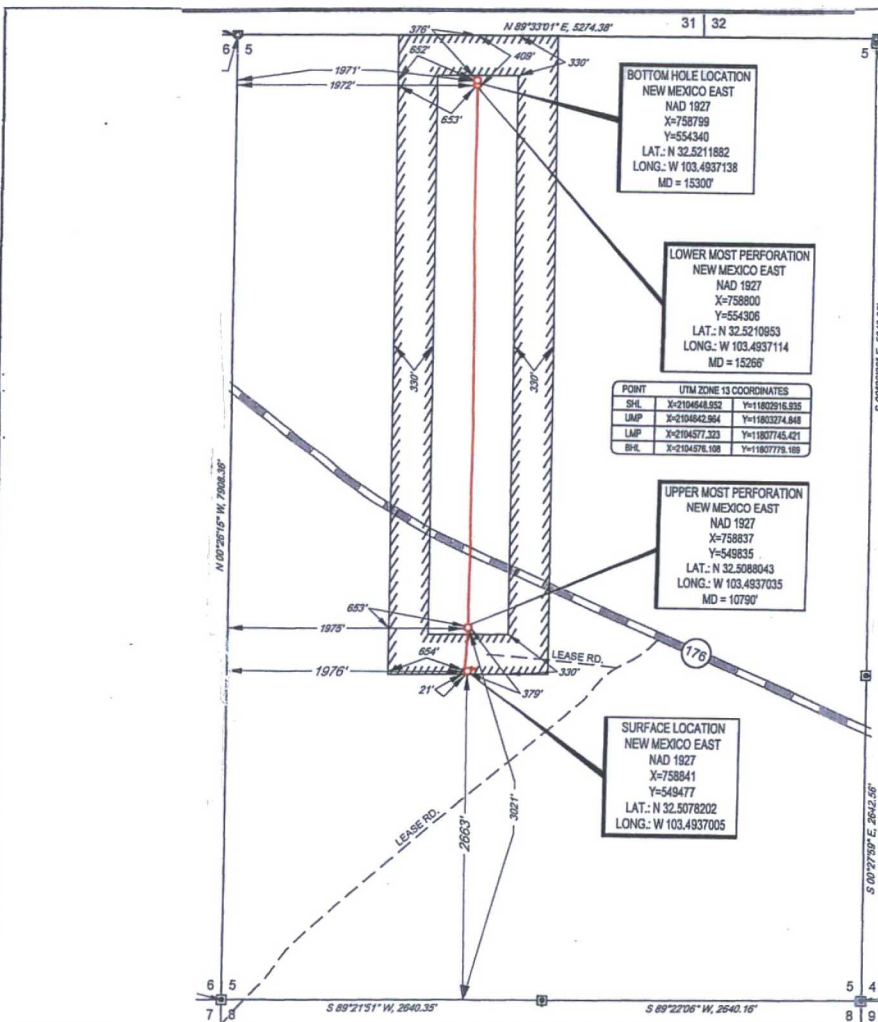
UL or lot No.	Section	Township	Range	Lot Idn	Feet from the	North/South line	Feet from the	East/West line	County
LOT 14	5	21 S	34 E		2663	SOUTH	1976	WEST	LEA

Bottom Hole Location If Different From Surface

UL or lot No.	Section	Township	Range	Lot Idn	Feet from the	North/South line	Feet from the	East/West line	County
LOT 3	5	21 S	34 E		376	NORTH	1971	WEST	LEA

Dedicated Acres	Joint or Infill	Consolidation Code	Order No.
159.27			

NO ALLOWABLE WILL BE ASSIGNED TO THIS COMPLETION UNTIL ALL INTERESTS HAVE BEEN CONSOLIDATED
OR A NON-STANDARD UNIT HAS BEEN APPROVED BY THE DIVISION



OPERATOR CERTIFICATION

I hereby certify that the information contained herein is true and complete to the best of my knowledge and belief, and that this organization either owns a working interest or unleased mineral interest in the land including the proposed bottom hole location or has a right to drill this well at this location pursuant to a contract with an owner of such a mineral or working interest, or to a voluntary pooling agreement or a compulsory pooling order heretofore entered by the division.

Signature **Kay Maddox** Date **8/1/17**
Printed Name **KAY MADDOX**
Email Address **Kay-maddox@ecgresources.com**

SURVEYOR CERTIFICATION

I hereby certify that the well location shown on this plat was plotted from field notes of actual surveys made by me or under my supervision, and that the same is true and correct to the best of my belief.

DECEMBER 16, 2013

Date Surveyed
Signature of Professional Surveyor
Certificate No. 7977
BRAIN SURVEYS

0' 1000' 2000' 3000' 4000'
SCALE: 1" = 2000'
WO Num.: 29840

