

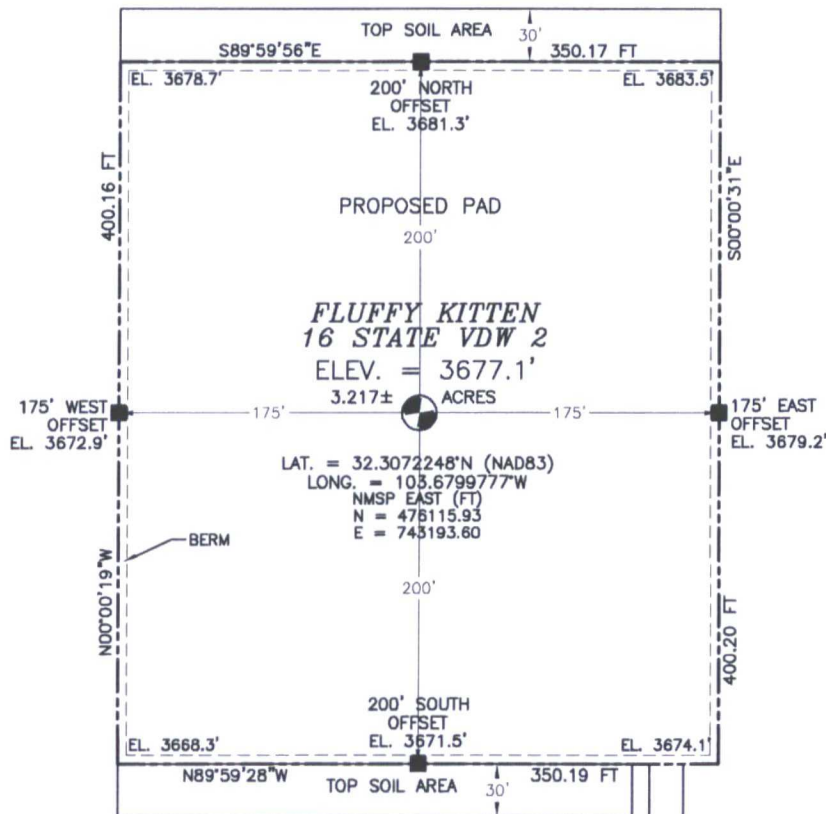
HOBBS OCD

MAY 18 2017

RECEIVED

SECTION 16, TOWNSHIP 23 SOUTH, RANGE 32 EAST, N.M.P.M.
LEA COUNTY, STATE OF NEW MEXICO
SITE MAP

NOTE: LATITUDE AND LONGITUDE COORDINATES ARE SHOWN USING THE NORTH AMERICAN DATUM OF 1983 (NAD83). LISTED NEW MEXICO STATE PLANE EAST COORDINATES ARE GRID (NAD83). BASIS OF BEARING AND DISTANCES USED ARE NEW MEXICO STATE PLANE EAST COORDINATES MODIFIED TO THE SURFACE. ELEVATION VALUES ARE NAVD88.



010 50 100 200

SCALE 1" = 100'

DIRECTIONS TO LOCATION

FROM STATE HWY 128 & RED ROAD (COUNTY ROAD 798) GO NORTH ON RED ROAD APPROX. 3.7 MILES TO LEASE ROAD ON RIGHT (EAST), TURN EAST ON LEASE ROAD GO APPROX. 2.0 MILES, ROAD BENDS SOUTH (RIGHT) GO APPROX. 0.6 MILE, ROAD TURNS EAST (LEFT) GO EAST APPROX. 1.2 MILES TO "T" INTERSECTION, TURN LEFT (NORTH) GO NORTH 0.2 MILE, ROAD TURNS RIGHT (EAST) GO EAST 0.4 MILE, ROAD TURNS LEFT (NORTH) GO NORTH APPROX. 0.3 MILE, ROAD TURNS LEFT (WEST) GO WEST APPROX. 0.2 MILE TO RED & WHITE ROAD LATH, FOLLOW ROAD LATHS APPROX. 600', ROAD PI'S RIGHT GO APPROX 50', ROAD PI'S RIGHT (NORTH) GO APPROX. 100' TO SOUTHEAST PAD CORNER FOR THIS LOCATION.

DEVON ENERGY PRODUCTION COMPANY, L.P.
FLUFFY KITTEN 16 STATE VDW 2
LOCATED 1690 FT. FROM THE NORTH LINE
AND 2530 FT. FROM THE WEST LINE OF
SECTION 16, TOWNSHIP 23 SOUTH,
RANGE 32 EAST, N.M.P.M.
LEA COUNTY, STATE OF NEW MEXICO

APRIL 11, 2017

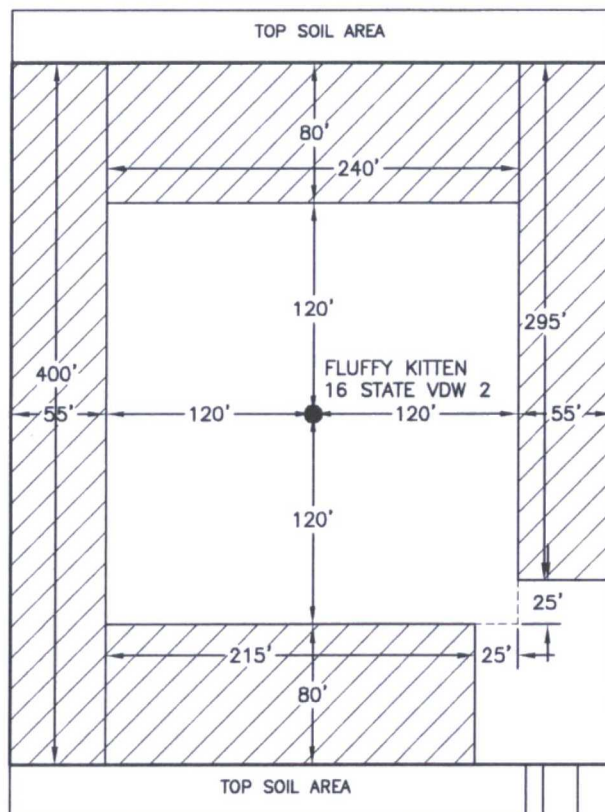
SURVEY NO. 6204A

MADRON SURVEYING, INC.

301 SOUTH CANAL
(575) 234-3341

CARLSBAD, NEW MEXICO

SECTION 16, TOWNSHIP 23 SOUTH, RANGE 32 EAST, N.M.P.M.
LEA COUNTY, STATE OF NEW MEXICO
INTERIM SITE RECLAMATION



 DENOTES
RECLAMATION AREA
1.716± ACRES RECLAMATION AREA

PROPOSED 747 L.F.
ACCESS ROAD

010 50 100 200
SCALE 1" = 100'

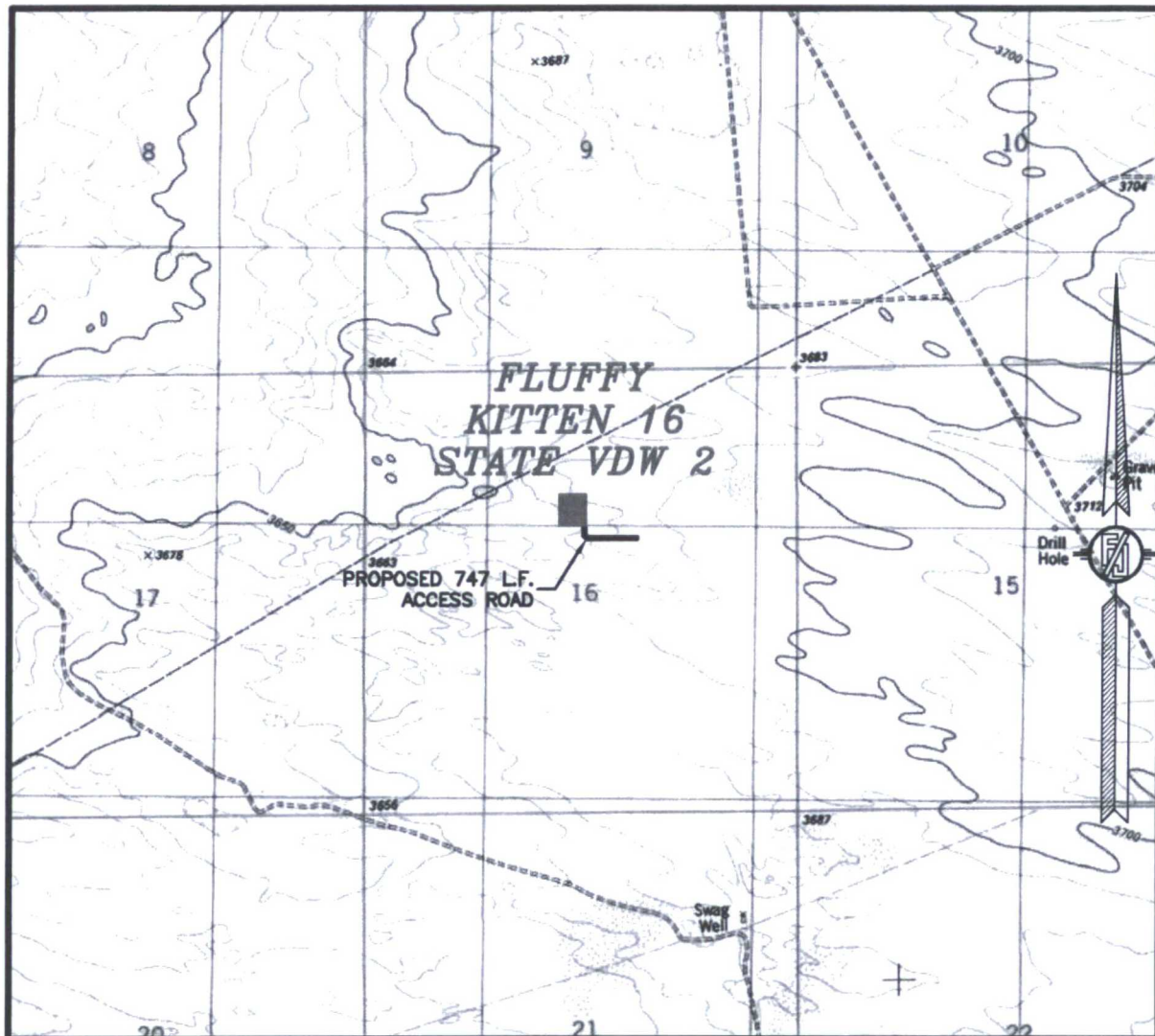
DEVON ENERGY PRODUCTION COMPANY, L.P.
FLUFFY KITTEN 16 STATE VDW 2
LOCATED 1690 FT. FROM THE NORTH LINE
AND 2530 FT. FROM THE WEST LINE OF
SECTION 16, TOWNSHIP 23 SOUTH,
RANGE 32 EAST, N.M.P.M.
LEA COUNTY, STATE OF NEW MEXICO

APRIL 11, 2017

SURVEY NO. 5204A

MADRON SURVEYING, INC. 301 SOUTH CANAL (575) 234-3341 CARLSBAD, NEW MEXICO

SECTION 16, TOWNSHIP 23 SOUTH, RANGE 32 EAST, N.M.P.M.
LEA COUNTY, STATE OF NEW MEXICO
LOCATION VERIFICATION MAP



USGS QUAD MAP:
BOOTLEG RIDGE

NOT TO SCALE

DEVON ENERGY PRODUCTION COMPANY, L.P.
FLUFFY KITTEN 16 STATE VDW 2
LOCATED 1690 FT. FROM THE NORTH LINE
AND 2530 FT. FROM THE WEST LINE OF
SECTION 16, TOWNSHIP 23 SOUTH,
RANGE 32 EAST, N.M.P.M.
LEA COUNTY, STATE OF NEW MEXICO

APRIL 11, 2017

SURVEY NO. 5204A

MADRON SURVEYING, INC. 301 SOUTH CANAL (575) 234-3341 CARLSBAD, NEW MEXICO