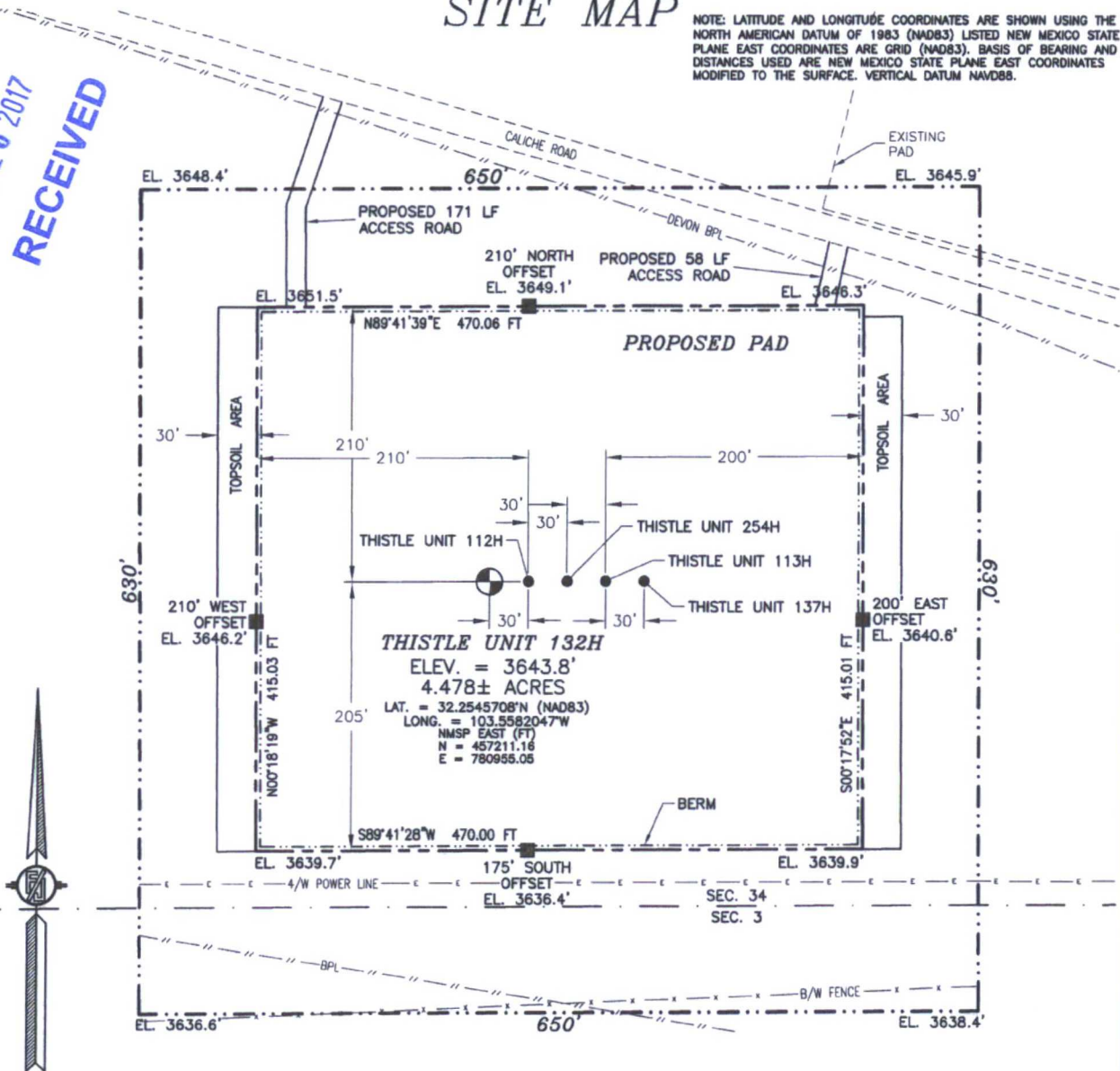


SECTION 34, TOWNSHIP 23 SOUTH, RANGE 33 EAST, N.M.P.M.
LEA COUNTY, STATE OF NEW MEXICO

SITE MAP

NOTE: LATITUDE AND LONGITUDE COORDINATES ARE SHOWN USING THE NORTH AMERICAN DATUM OF 1983 (NAD83) LISTED NEW MEXICO STATE PLANE EAST COORDINATES ARE GRID (NAD83). BASIS OF BEARING AND DISTANCES USED ARE NEW MEXICO STATE PLANE EAST COORDINATES MODIFIED TO THE SURFACE. VERTICAL DATUM NAVD88.

HOBBS OCD
AUG 16 2017
RECEIVED



0 12 60 120 240

SCALE 1" = 120'

DIRECTIONS TO LOCATION

FROM STATE HIGHWAY 128 AND CR J2 (BRINSTOOL) GO NORTH ON CR J2 3.1 MILES, TURN RIGHT ON CALICHE ROAD AND GO EAST 0.44 OF A MILE, BEND LEFT AND GO NORTH 0.1 OF A MILE, BEND RIGHT AND GO SOUTHEAST 0.31 OF A MILE TO A PROPOSED ROAD SURVEY AND FOLLOW FLAGS SOUTH 58' TO THE NORTHEAST PAD CORNER FOR THIS LOCATION.

DEVON ENERGY PRODUCTION COMPANY, L.P.

THISTLE UNIT 132H

LOCATED 248 FT. FROM THE SOUTH LINE
AND 2022 FT. FROM THE EAST LINE OF
SECTION 34, TOWNSHIP 23 SOUTH,
RANGE 33 EAST, N.M.P.M.

LEA COUNTY, STATE OF NEW MEXICO

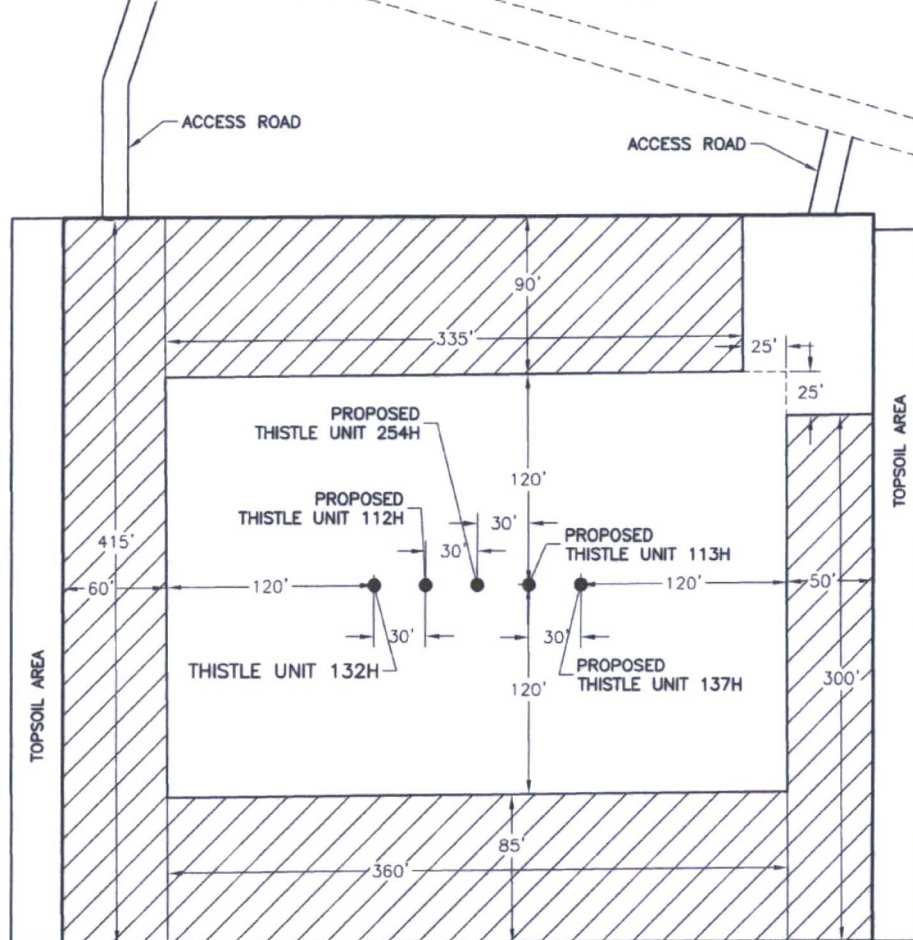
DECEMBER 8, 2016

SURVEY NO. 4711D

MADRON SURVEYING, INC. 301 SOUTH CANAL
(575) 234-3341

CARLSBAD, NEW MEXICO

**PROPOSED INTERIM SITE RECLAMATION
FOR THISTLE UNIT 132H**
SECTION 34, TOWNSHIP 23 SOUTH, RANGE 33 EAST, N.M.P.M.
LEA COUNTY, STATE OF NEW MEXICO



 DENOTES
RECLAMATION AREA
2.311± ACRES RECLAMATION AREA



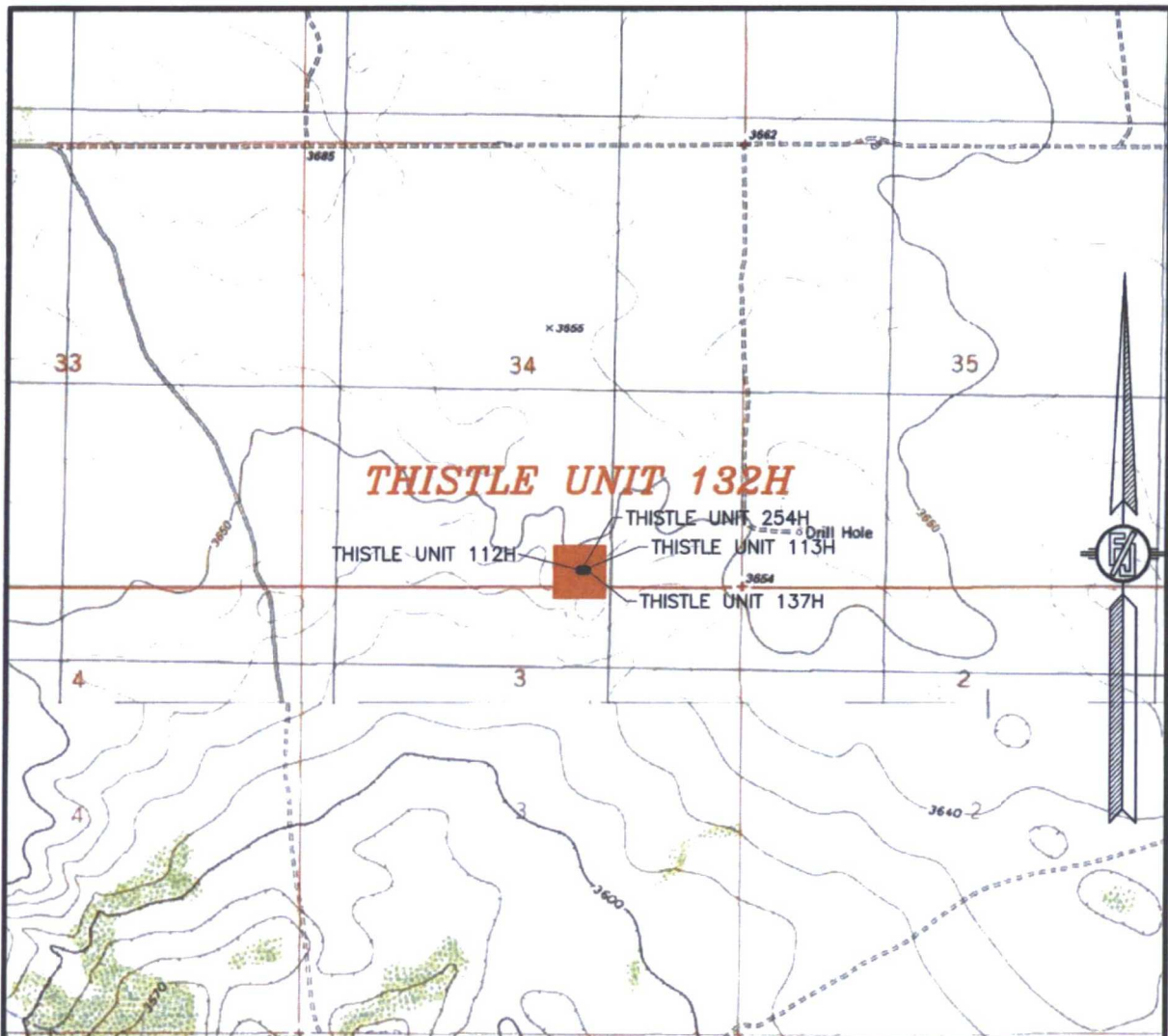
010 50 100 200
SCALE 1" = 100'

DEVON ENERGY PRODUCTION COMPANY, L.P.
THISTLE UNIT 132H
LOCATED 248 FT. FROM THE SOUTH LINE
AND 2022 FT. FROM THE EAST LINE OF
SECTION 34, TOWNSHIP 23 SOUTH,
RANGE 33 EAST, N.M.P.M.
LEA COUNTY, STATE OF NEW MEXICO

DECEMBER 8, 2016

SURVEY NO. 4711D
MADRON SURVEYING, INC. 301 SOUTH CANAL (575) 234-3341 **CARLSBAD, NEW MEXICO**

SECTION 34, TOWNSHIP 23 SOUTH, RANGE 33 EAST, N.M.P.M.
LEA COUNTY, STATE OF NEW MEXICO
LOCATION VERIFICATION MAP



USGS QUAD MAP:
TIP TOP WELLS

NOT TO SCALE

DEVON ENERGY PRODUCTION COMPANY, L.P.

THISTLE UNIT 132H

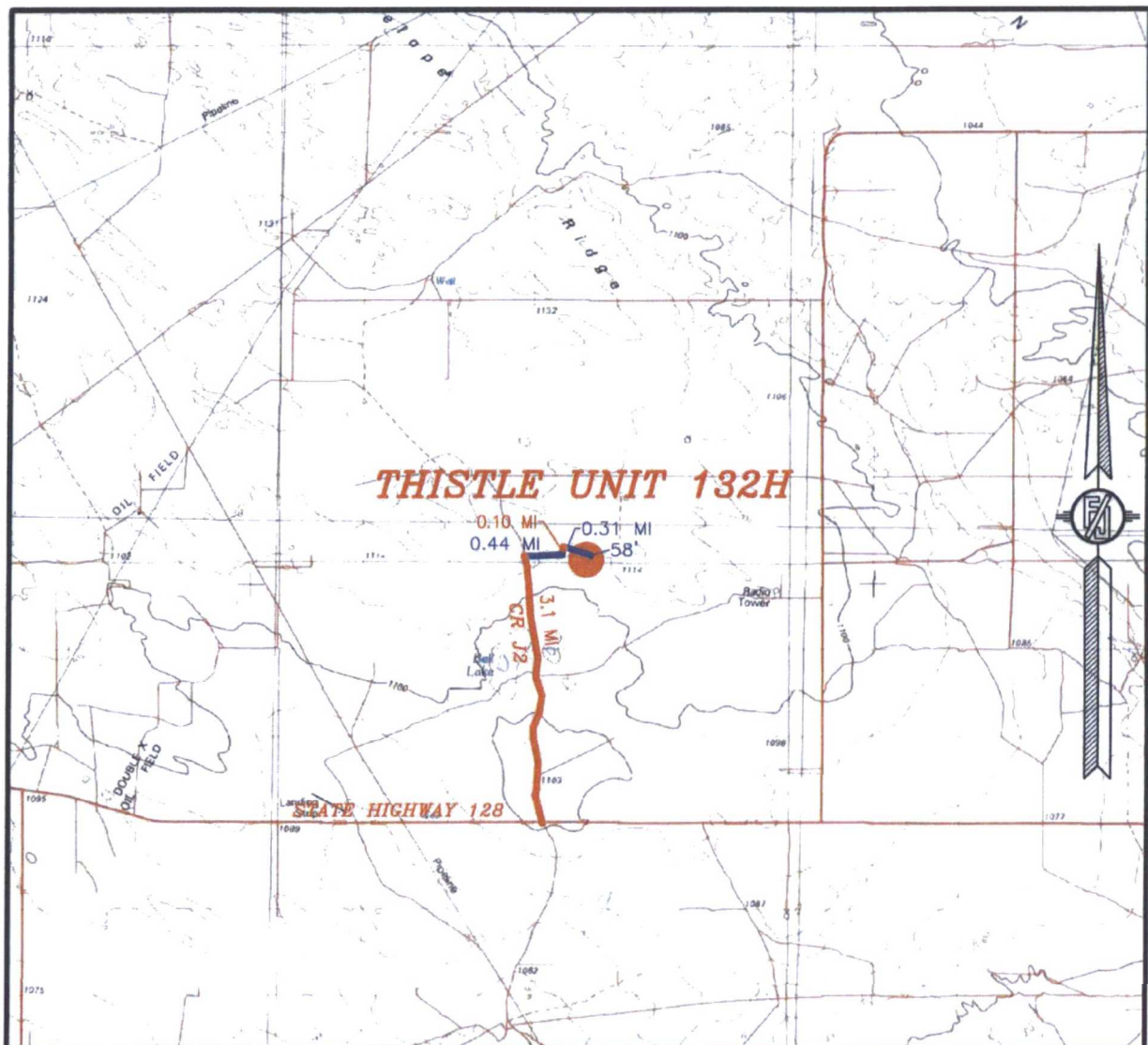
LOCATED 248 FT. FROM THE SOUTH LINE
AND 2022 FT. FROM THE EAST LINE OF
SECTION 34, TOWNSHIP 23 SOUTH,
RANGE 33 EAST, N.M.P.M.
LEA COUNTY, STATE OF NEW MEXICO

DECEMBER 8, 2016

SURVEY NO. 4711D

MADRON SURVEYING, INC. 301 SOUTH CANAL (575) 234-3341 CARLSBAD, NEW MEXICO

SECTION 34, TOWNSHIP 23 SOUTH, RANGE 33 EAST, N.M.P.M.
LEA COUNTY, STATE OF NEW MEXICO
VICINITY MAP



DISTANCES IN MILES

NOT TO SCALE

DEVON ENERGY PRODUCTION COMPANY, L.P.
THISTLE UNIT 132H

LOCATED 248 FT. FROM THE SOUTH LINE
AND 2022 FT. FROM THE EAST LINE OF
SECTION 34, TOWNSHIP 23 SOUTH,
RANGE 33 EAST, N.M.P.M.
LEA COUNTY, STATE OF NEW MEXICO

DIRECTIONS TO LOCATION

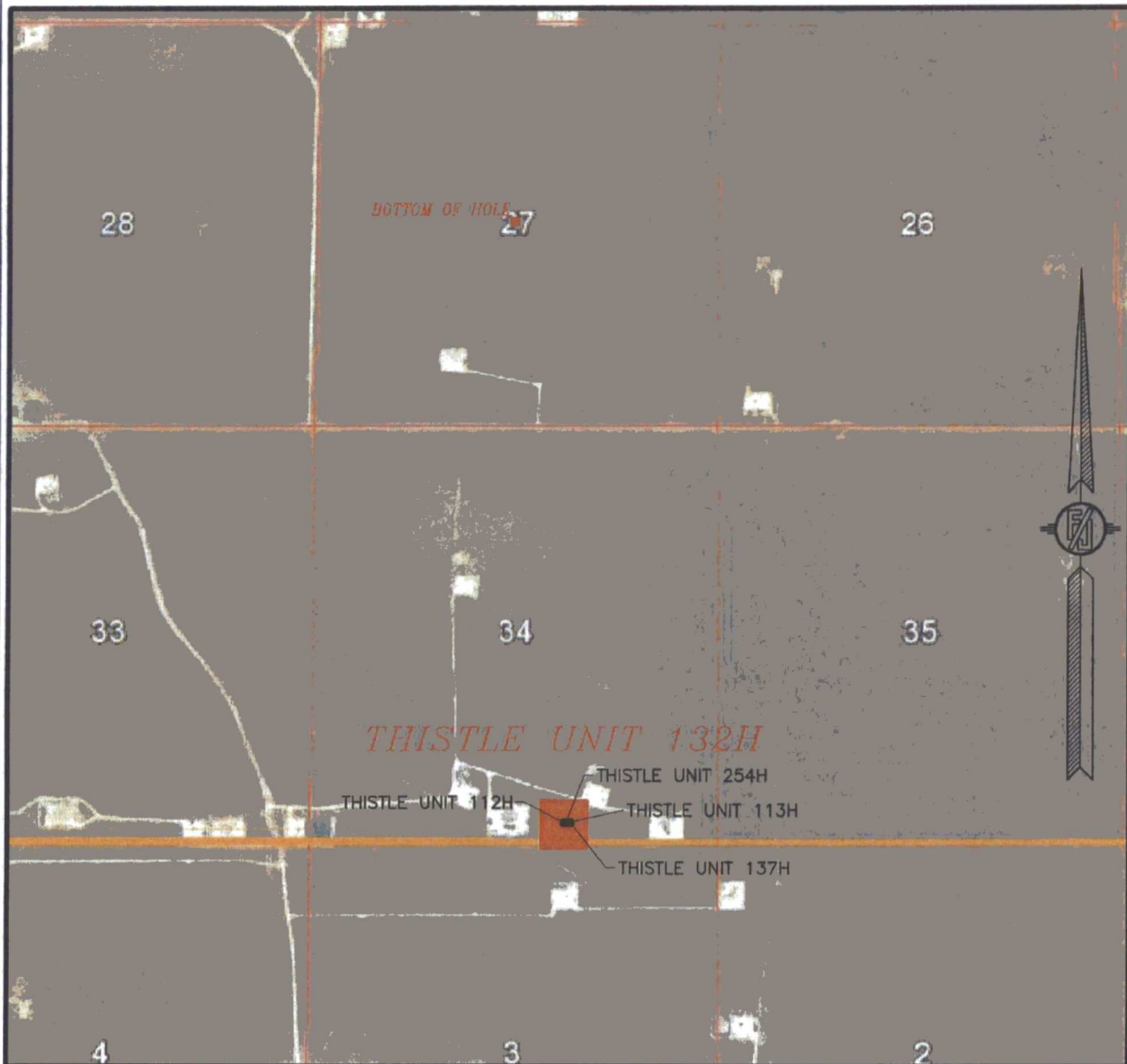
FROM STATE HIGHWAY 128 AND CR J2 (BRINSTOOL) GO NORTH ON CR J2 3.1 MILES, TURN RIGHT ON CALICHE ROAD AND GO EAST 0.44 OF A MILE, BEND LEFT AND GO NORTH 0.1 OF A MILE, BEND RIGHT AND GO SOUTHEAST 0.31 OF A MILE TO A PROPOSED ROAD SURVEY AND FOLLOW FLAGS SOUTH 58° TO THE NORTHEAST PAD CORNER FOR THIS LOCATION.

DECEMBER 8, 2016

SURVEY NO. 4711D

MADRON SURVEYING, INC. 301 SOUTH CANAL (575) 234-3341 CARLSBAD, NEW MEXICO

SECTION 34, TOWNSHIP 23 SOUTH, RANGE 33 EAST, N.M.P.M.
LEA COUNTY, STATE OF NEW MEXICO
AERIAL PHOTO



NOT TO SCALE
AERIAL PHOTO:
GOOGLE EARTH
FEBRUARY 2014

DEVON ENERGY PRODUCTION COMPANY, L.P.
THISTLE UNIT 132H

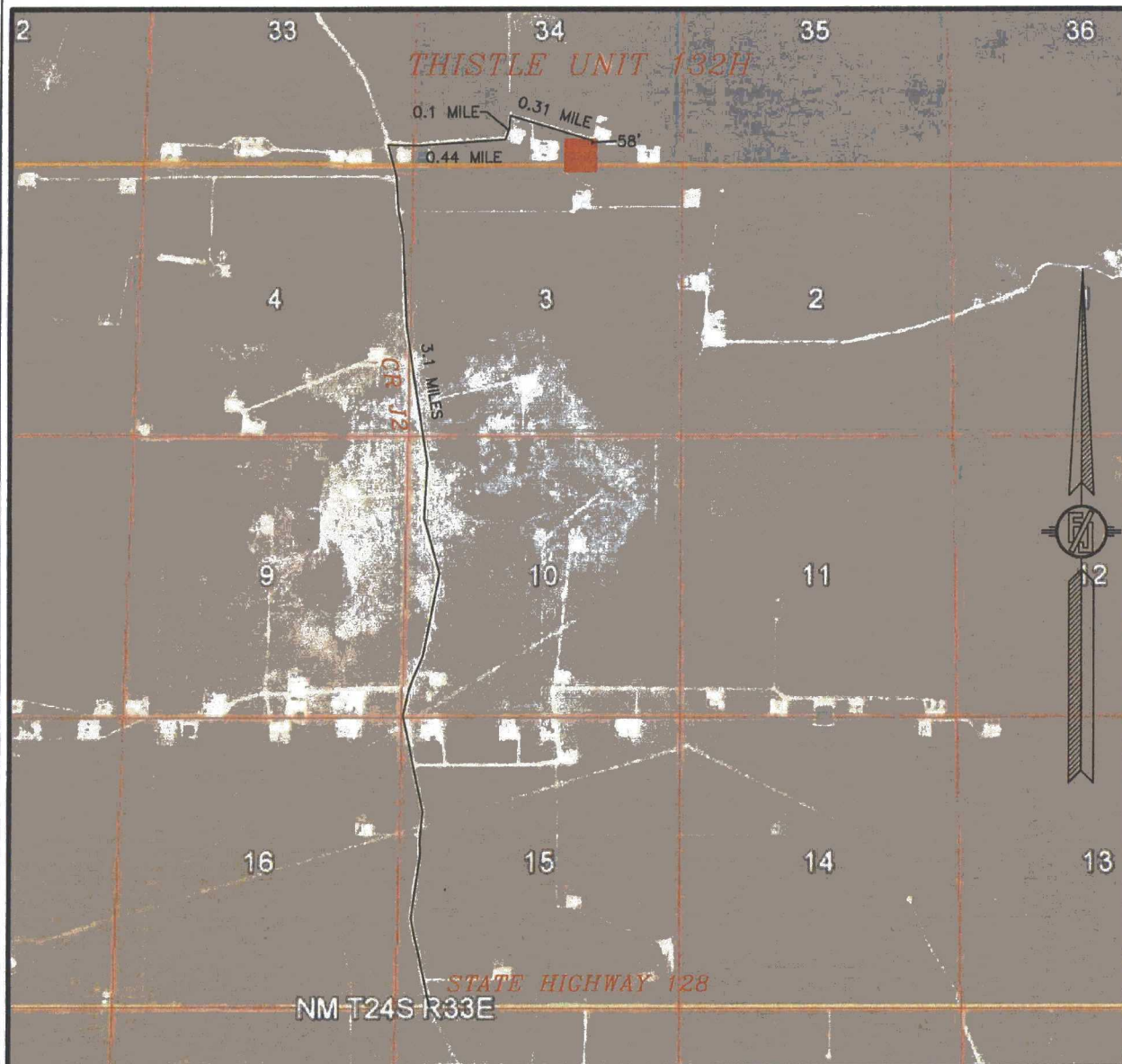
LOCATED 248 FT. FROM THE SOUTH LINE
AND 2022 FT. FROM THE EAST LINE OF
SECTION 34, TOWNSHIP 23 SOUTH,
RANGE 33 EAST, N.M.P.M.
LEA COUNTY, STATE OF NEW MEXICO

DECEMBER 8, 2016

SURVEY NO. 4711D

MADRON SURVEYING, INC. 301 SOUTH CANAL (575) 234-3341 CARLSBAD, NEW MEXICO

SECTION 34, TOWNSHIP 23 SOUTH, RANGE 33 EAST, N.M.P.M.
LEA COUNTY, STATE OF NEW MEXICO
ACCESS AERIAL ROUTE MAP



NOT TO SCALE
AERIAL PHOTO:
GOOGLE EARTH
FEBRUARY 2014

DEVON ENERGY PRODUCTION COMPANY, L.P.
THISTLE UNIT 132H

LOCATED 248 FT. FROM THE SOUTH LINE
AND 2022 FT. FROM THE EAST LINE OF
SECTION 34, TOWNSHIP 23 SOUTH,
RANGE 33 EAST, N.M.P.M.
LEA COUNTY, STATE OF NEW MEXICO

DECEMBER 8, 2016

SURVEY NO. 4711D

MADRON SURVEYING, INC. 301 SOUTH CANAL CARLSBAD, NEW MEXICO
(575) 234-3341