

DISTRICT I

1625 N. French Dr., Hobbs, NM 88240
Phone: (575) 393-8161 Fax: (575) 393-0720

DISTRICT II

811 S. First St., Artesia, NM 88210
Phone: (575) 748-1283 Fax: (575) 748-9720

DISTRICT III

1000 Rio Brazos Rd., Aztec, NM 87410
Phone: (505) 334-8178 Fax: (505) 334-8170

DISTRICT IV

1220 S. St. Francis Dr., Santa Fe, NM 87505
Phone: (505) 476-3480 Fax: (505) 476-3482

State of New Mexico

Energy, Minerals & Natural Resources Department

OIL CONSERVATION DIVISION
1220 South St. Frances Dr.
Santa Fe, NM 87505

Form C-102

Revised August 1, 2011

Submit one copy to appropriate
District Office

□ AMENDED REPORT

WELL LOCATION AND ACREAGE DEDICATION PLAT

API Number 30-025- 44026	Pool Code 37570	Pool Name Lea; Bone Spring
Property Code 302802	Property Name LEA UNIT	Well Number 56H
GRID No. 240974	Operator Name LEGACY RESERVES OPERATING LP	Elevation 3662'

Surface Location

UL or lot No.	Section	Township	Range	Lot Idn	Feet from the	North/South line	Feet from the	East/West line	County
B	11	20 S	34 E		170	NORTH	1640	EAST	LEA

Bottom Hole Location If Different From Surface

UL or lot No.	Section	Township	Range	Lot Idn	Feet from the	North/South line	Feet from the	East/West line	County
G	14	20 S	34 E		2310	NORTH	2210	EAST	LEA

Dedicated Acres	Joint or Infill	Consolidation Code	Order No.
240			

NO ALLOWABLE WILL BE ASSIGNED TO THIS COMPLETION UNTIL ALL INTERESTS HAVE BEEN CONSOLIDATED OR A NON-STANDARD UNIT HAS BEEN APPROVED BY THE DIVISION

NOTE:

1) Plane Coordinates shown hereon are Transverse Mercator Grid and Conform to the "New Mexico Coordinate System", New Mexico East Zone, North American Datum of 1983. Distances shown hereon are mean horizontal surface values.

SURFACE LOCATION (NAD83)
Plane Coordinate
X = 789,467.4
Y = 580,919.3
Geodetic (D.D.)
32.59441666° N
103.52765369° W

FIRST TAKE POINT (NAD83)
Plane Coordinate
X = 789,456.3
Y = 580,759.4
Geodetic (D.D.)
32.59397737° N
103.52769346° W

BOTTOM HOLE LOCATION & LAST TAKE POINT (NAD83)
Plane Coordinate
X = 788,955.5
Y = 573,498.1
Geodetic (D.D.)
32.57402905° N
103.52949891° W

Scale
1" = 2000'

OPERATOR CERTIFICATION

I hereby certify that the information contained herein is true and complete to the best of my knowledge and belief, and that this organization either owns a working interest or undivided mineral interest in the land including the proposed bottom hole location or has a right to drill this well at this location pursuant to a contract with an owner of such a mineral or working interest, or to a voluntary pooling agreement or a compulsory pooling order heretofore entered by the division.

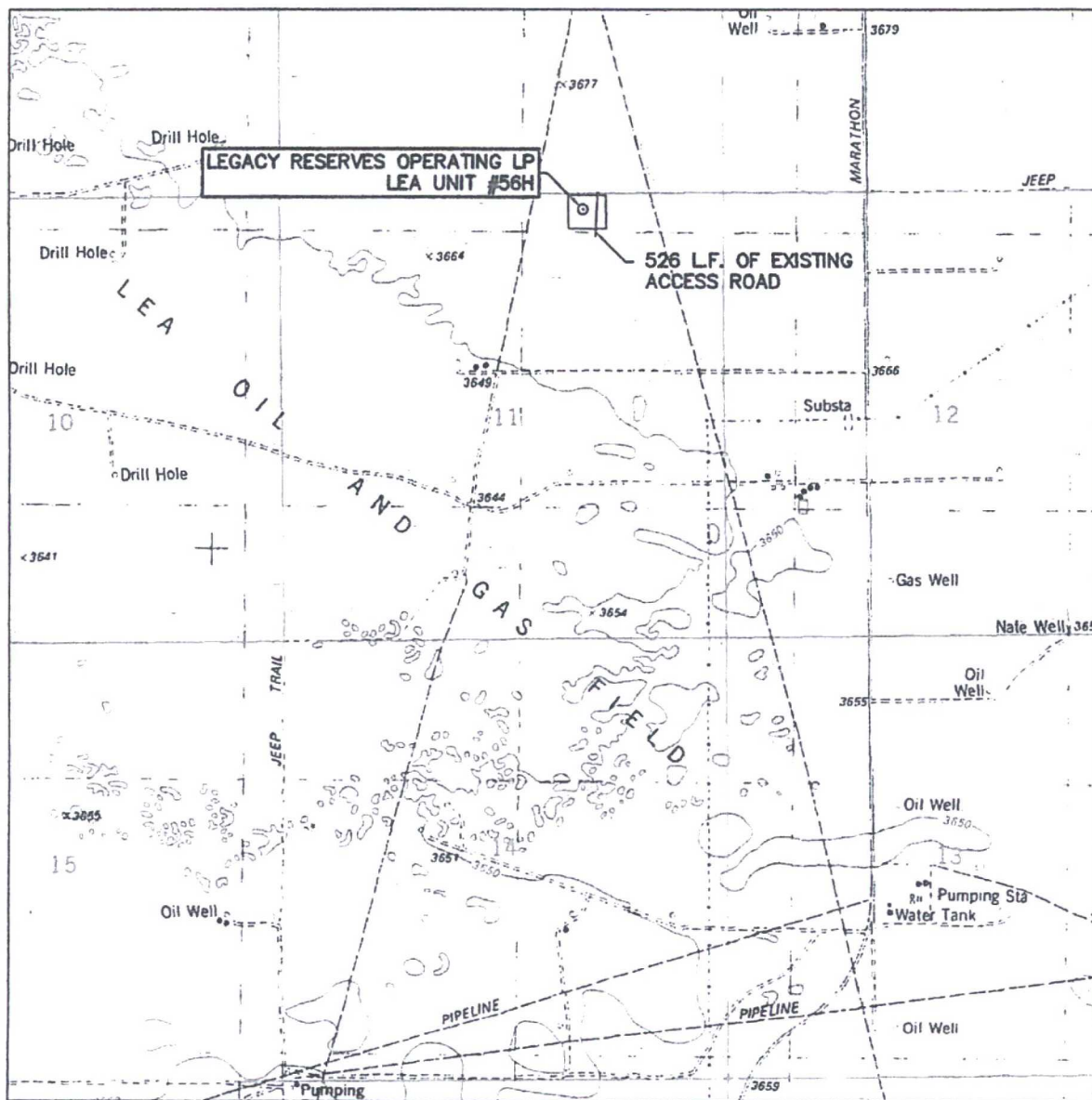
Brian Wood 4-24-17
Signature Date
Brian Wood
Printed Name
brian@permitswest.com
E-mail Address (505) 466-8120

SURVEYOR CERTIFICATION

I hereby certify that the well location shown on this plat was plotted from field notes of actual surveys made by me or under my supervision, and that the same is true and correct to the best of my belief.

August 10, 2015
Date of Survey
Signature & Seal of *Surveyor*
Professional Surveyor
W.O. Num. 2015
Certificate No. 23263

LOCATION VERIFICATION MAP



SCALE: 1" = 2000'

CONTOUR INTERVAL:
LEA - 10'

SEC. 11 TWP. 20-S RGE. 34-E

SURVEY N.M.P.M.

COUNTY LEA

DESCRIPTION 170' FNL & 1640' FEL

ELEVATION 3662'

OPERATOR LEGACY RESERVES OPERATING LP

LEASE LEA UNIT

U.S.G.S. TOPOGRAPHIC MAP
LEA



WEST COMPANY
Land Surveyors • Civil Engineers

SURVEYORS - ENGINEERS - PLANNERS
FIRM REGISTRATION NUMBER: 100682-00
110 W. LOUISIANA AVE., SUITE 110
MIDLAND, TEXAS 79701
(432) 687-0865 - FAX (432) 687-0868