

HOBBS OCD
SEP 19 2017
RECEIVED

Bureau of Land Management

Hobbs Field Office

414 W. Taylor

Hobbs, New Mexico

505.393.3612


WATER PRODUCTION & DISPOSAL INFORMATION

Well: Hound 30 Fed 702H

NWSW Sec 30 T25S, R34E

30-025-43575

1. Name of formations producing water on lease: WOLFCAMP
2. Amount of water produced from all formations in barrels per day 2000-7000 BWPD
3. How water is stored on lease Tanks 4-400 bbl tanks
4. How water is moved to disposal facility Pipeline/Trucked
5. Disposal Facility:
 - a. Facility Operators name EOG RESOURCES, INC
 - b. Name of facility or well name & number
Black Bear 36 State #5
30-025-40585
H-36-25S-33E
 - c. Type of facility or wells WDW
 - d. Permit No SWD -1359



EOG Resources, Inc.
Hound 30 CTB
3-30-25S-34E

6/15/2017

LEGEND

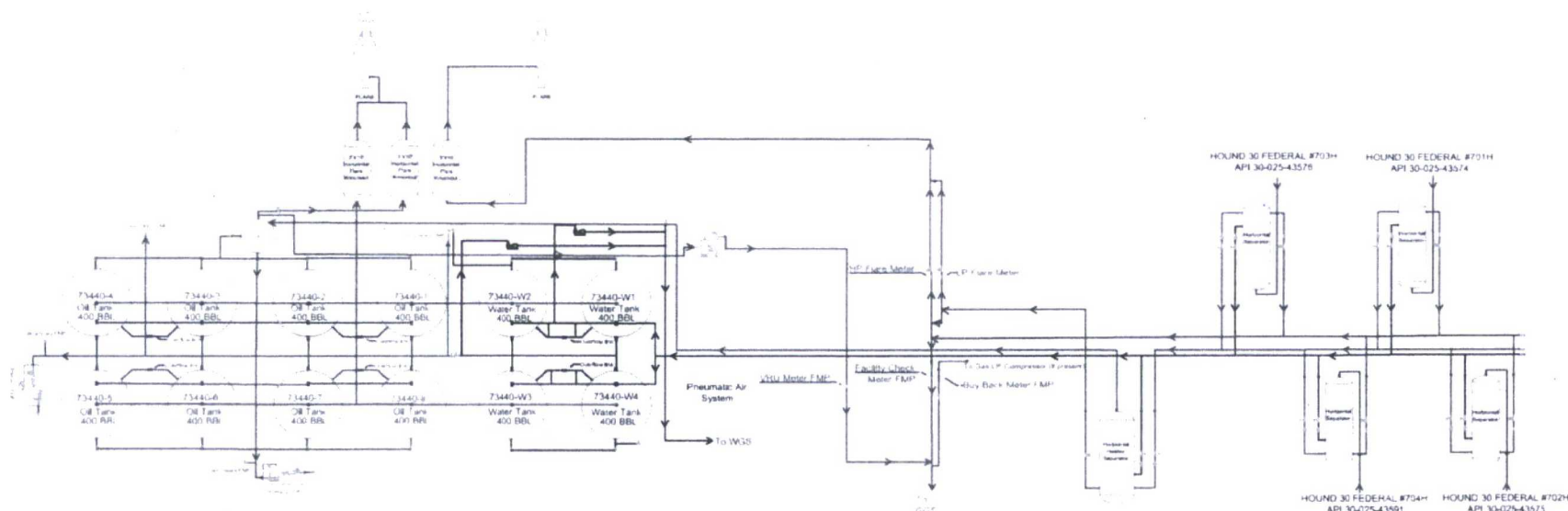
Valve Open	Turbine/ Coriolis Meter
Valve Closed	— Oil
Valve Sealed	— Gas
Orifice Meter	— Water

FACILITY DIAGRAM
Shown: Major equipment, vessels, process piping, and valves.
Not shown: Auxiliary process systems such as pneumatic air system, gas lift system, roll lines, recirculating lines, vent lines, and small drain lines.

PRODUCTION PHASE: All valves that provide access to production are effectively sealed in the closed position. **SALES THROUGH LACT UNITS:** Sale is measured through LACT units. All other valves that provide access to production (load-out valves) are effectively sealed in the closed position.

WATER TANKS: If the possibility for oil to enter water tanks exists through common recirculating or equalizing lines, oil tanks are isolated from water tanks by valves effectively sealed in the closed position.

WELL SPECIFIC MEASUREMENT: The production from each well will flow into a dedicated 3-phase separator. The production stream will be separated into 3 independent streams (gas, oil, and water) by the separator and each stream will be measured individually after it exits the separator. The gas will be measured using a senior orifice meter and used to allocate total volume measured at the facility check meter, high pressure flare meter, and low pressure flare meter.



Facility Overview: Please see pages 2 and 3 for details.

