

District I  
1625 N. French Dr., Hobbs, NM 88240  
Phone: (575) 393-6161 Fax: (575) 393-0720  
District II  
811 S. First St., Artesia, NM 88210  
Phone: (575) 748-1283 Fax: (575) 748-9720  
District III  
1000 Rio Brazos Road, Aztec, NM 87410  
Phone: (505) 334-6178 Fax: (505) 334-6170  
District IV  
1220 S. St. Francis Dr., Santa Fe, NM 87505  
Phone: (505) 476-3460 Fax: (505) 476-3462

State of New Mexico  
Energy, Minerals & Natural Resources  
Department  
OIL CONSERVATION DIVISION  
1220 South St. Francis Dr.  
Santa Fe, NM 87505

FORM C-102  
Revised August 1, 2011  
Submit one copy to appropriate  
District Office

HOBBS OCD  
SEP 11 2017  
RECEIVED

☐ AMENDED REPORT

WELL LOCATION AND ACREAGE DEDICATION PLAT

<sup>1</sup> API Number 30-025-43480	<sup>2</sup> Pool Code 98180	<sup>3</sup> Pool Name WC-025 G-09 S253309A; Upper Wolfcamp
<sup>4</sup> Property Code	<sup>5</sup> Property Name ANTIETAM 9 FED COM	<sup>6</sup> Well Number #704H
<sup>7</sup> OGRID No. 7377	<sup>8</sup> Operator Name EOG RESOURCES, INC.	<sup>9</sup> Elevation 3440'

<sup>10</sup>Surface Location

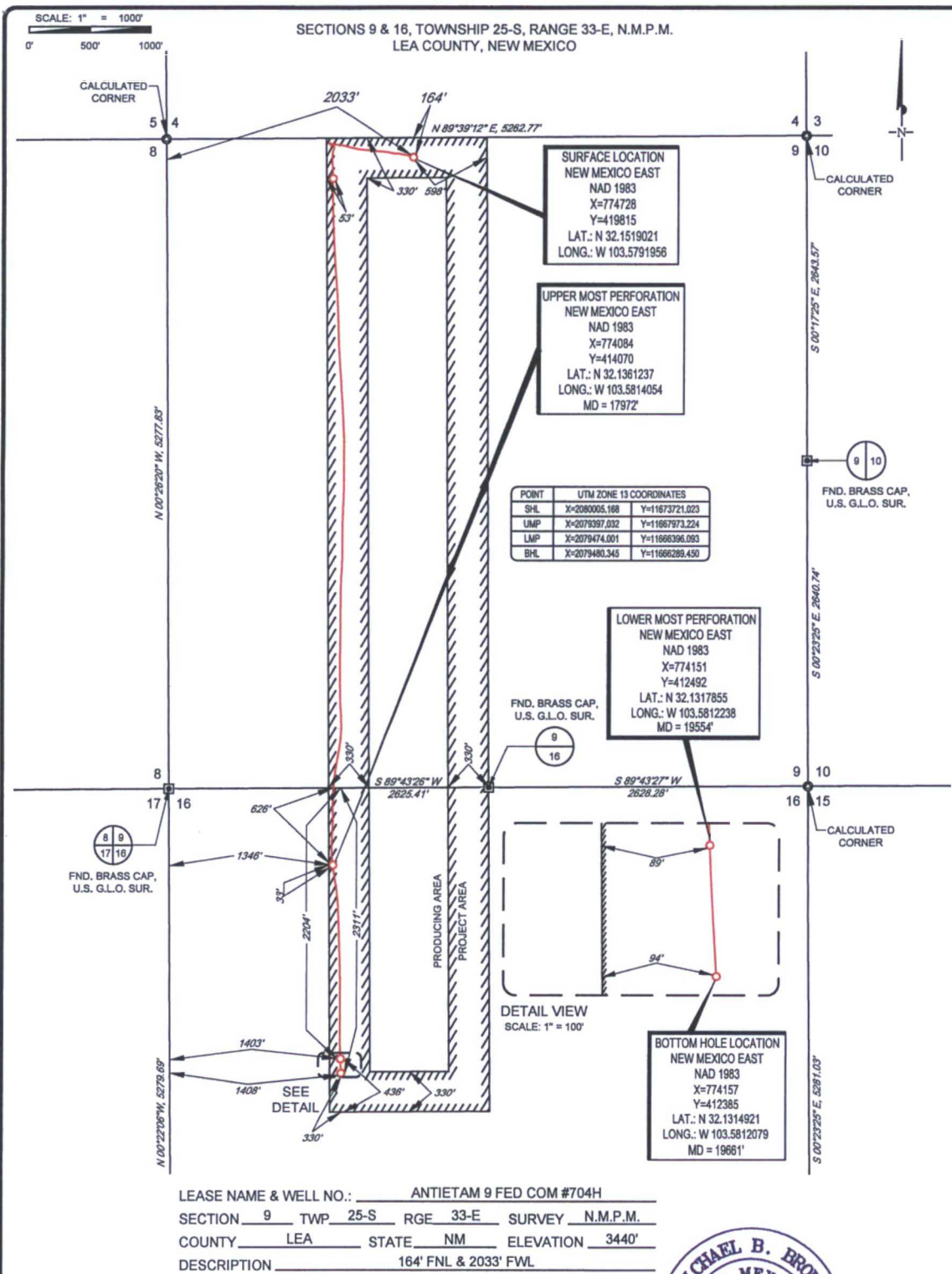
UL or lot no.	Section	Township	Range	Lot Idn	Feet from the	North/South line	Feet from the	East/West line	County
C	9	25-S	33-E	-	164'	NORTH	2033'	WEST	LEA

UL or lot no.	Section	Township	Range	Lot Idn	Feet from the	North/South line	Feet from the	East/West line	County
F	16	25-S	33-E	-	2311	NORTH	1408	WEST	LEA

<sup>12</sup> Dedicated Acres 240.00	<sup>13</sup> Joint or Infill	<sup>14</sup> Consolidation Code	<sup>15</sup> Order No.
---	-------------------------------	----------------------------------	-------------------------

No allowable will be assigned to this completion until all interests have been consolidated or a non-standard unit has been approved by the division.

<p><b>SURFACE LOCATION</b> NEW MEXICO EAST NAD 1983 X=774728 Y=419815 LAT.: N 32.1519021 LONG.: W 103.5791956</p> <p><b>UPPER MOST PERFORATION</b> NEW MEXICO EAST NAD 1983 X=774084 Y=414070 LAT.: N 32.1361237 LONG.: W 103.5814054 MD = 17972'</p> <p><b>LOWER MOST PERFORATION</b> NEW MEXICO EAST NAD 1983 X=774151 Y=412492 LAT.: N 32.1317855 LONG.: W 103.5812238 MD = 19554'</p> <p><b>POINT UTM ZONE 13 COORDINATES</b></p> <table border="1"> <tr> <th>POINT</th> <th>UTM ZONE 13 COORDINATES</th> </tr> <tr> <td>SRL</td> <td>X=2080005.168 Y=11673721.023</td> </tr> <tr> <td>UMP</td> <td>X=2079397.032 Y=11667973.224</td> </tr> <tr> <td>LMP</td> <td>X=2079474.001 Y=11666396.093</td> </tr> <tr> <td>BHL</td> <td>X=2079480.345 Y=11666289.450</td> </tr> </table> <p><b>DETAIL VIEW</b> SCALE: 1" = 100'</p> <p><b>BOTTOM HOLE LOCATION</b> NEW MEXICO EAST NAD 1983 X=774157 Y=412385 LAT.: N 32.1314921 LONG.: W 103.5812079 MD = 19661'</p>	POINT	UTM ZONE 13 COORDINATES	SRL	X=2080005.168 Y=11673721.023	UMP	X=2079397.032 Y=11667973.224	LMP	X=2079474.001 Y=11666396.093	BHL	X=2079480.345 Y=11666289.450	<p><b>17 OPERATOR CERTIFICATION</b></p> <p>I hereby certify that the information contained herein is true and complete to the best of my knowledge and belief, and that this organization either owns a working interest or unleased mineral interest in the land including the proposed bottom hole location or has a right to drill this well at this location pursuant to a contract with an owner of such a mineral or working interest, or to a voluntary pooling agreement or a compulsory pooling order heretofore entered by the division.</p> <p><i>Kay Maddox</i> - 9/6/2017 Signature Date Kay-Maddox@eogresources.com Printed Name E-mail Address</p> <p><b>18 SURVEYOR CERTIFICATION</b></p> <p>I hereby certify that the well location shown on this plat was plotted from field notes of actual surveys made by me or under my supervision, and that the same is true to the best of my belief.</p> <p>07/06/2016 Date of Survey Signature and Seal of Professional Surveyor MICHAEL BROWN NEW MEXICO 18329 PROFESSIONAL SURVEYOR Certificate Number</p>
	POINT	UTM ZONE 13 COORDINATES									
SRL	X=2080005.168 Y=11673721.023										
UMP	X=2079397.032 Y=11667973.224										
LMP	X=2079474.001 Y=11666396.093										
BHL	X=2079480.345 Y=11666289.450										



**TOPOGRAPHIC**  
LOYALTY INNOVATION LEGACY

1400 EVERMAN PARKWAY, Ste. 197 • FT. WORTH, TEXAS 76140  
TELEPHONE: (817) 744-7512 • FAX: (817) 744-7548  
2803 NORTH BIG SPRING • MIDLAND, TEXAS 79705  
TELEPHONE: (432) 682-1853 OR (800) 767-1853 • FAX: (432) 682-1743  
WWW.TOPOGRAPHIC.COM



Michael Blake Brown, P.S. No. 18329  
SEPTEMBER 1, 2017

ANTIETAM 9 FED COM #704H AS-COMPLETED	REVISION:	NOTES:
DATE: 09/1/17		1. ORIGINAL DOCUMENT SIZE: 8.5" X 14"
FILE: AD_ANTIETAM_9_FED_COM_704H		2. ALL BEARINGS, DISTANCES, AND COORDINATE VALUES CONTAINED HEREIN ARE GRID BASED UPON THE NEW MEXICO STATE PLANE COORDINATE SYSTEM, EAST ZONE, U.S. SURVEY FEET, NORTH AMERICAN DATUM 1983.
DRAWN BY: A.M.D.		3. THIS WELL LOCATION SHOWN HEREON HAS BEEN SURVEYED ON THE GROUND UNDER MY SUPERVISION AND PREPARED ACCORDING TO THE EVIDENCE FOUND AT THE TIME OF SURVEY, AND DATA PROVIDED BY EOG RESOURCES, INC. THIS CERTIFICATION IS MADE AND LIMITED TO THOSE PERSONS OR ENTITIES SHOWN ON THE FACE OF THIS PLAT AND IS NON-TRANSFERABLE. THIS SURVEY IS CERTIFIED FOR THIS TRANSACTION ONLY.
SHEET: 1 OF 1		