

DISTRICT I
1625 N. FRENCH DR., HOBBS, NM 88240
Phone: (575) 393-6161 Fax: (575) 393-0720

DISTRICT II
811 S. FIRST ST., ARTESIA, NM 88210
Phone: (575) 748-1283 Fax: (575) 748-9720

DISTRICT III
1000 RIO BRAZOS RD., AZTEC, NM 87410
Phone: (505) 334-6178 Fax: (505) 334-6170

DISTRICT IV
1220 S. ST. FRANCIS DR., SANTA FE, NM 87505
Phone: (505) 476-3480 Fax: (505) 476-3462

HOBBS OCD
OIL CONSERVATION DIVISION
SEP 14 2017
RECEIVED

State of New Mexico
Energy, Minerals & Natural Resources Department
1220 SOUTH ST. FRANCIS DR.
Santa Fe, New Mexico 87505

NM OIL CONSERVATION
ARTESIA DISTRICT
ANG 28 2017
RECEIVED

Form C-102
Revised August 1, 2011
Submit one copy to appropriate
District Office

☐ AMENDED REPORT

WELL LOCATION AND ACREAGE DEDICATION PLAT

API Number 30-025-42062	Pool Code 97929	Pool Name WC-025 G-06 S213326D; Bone Spring
Property Code 310282	Property Name PYGMY 27 STATE COM	Well Number 2H
OGRID No. 229137	Operator Name COG OPERATING, LLC	Elevation 3726.5'

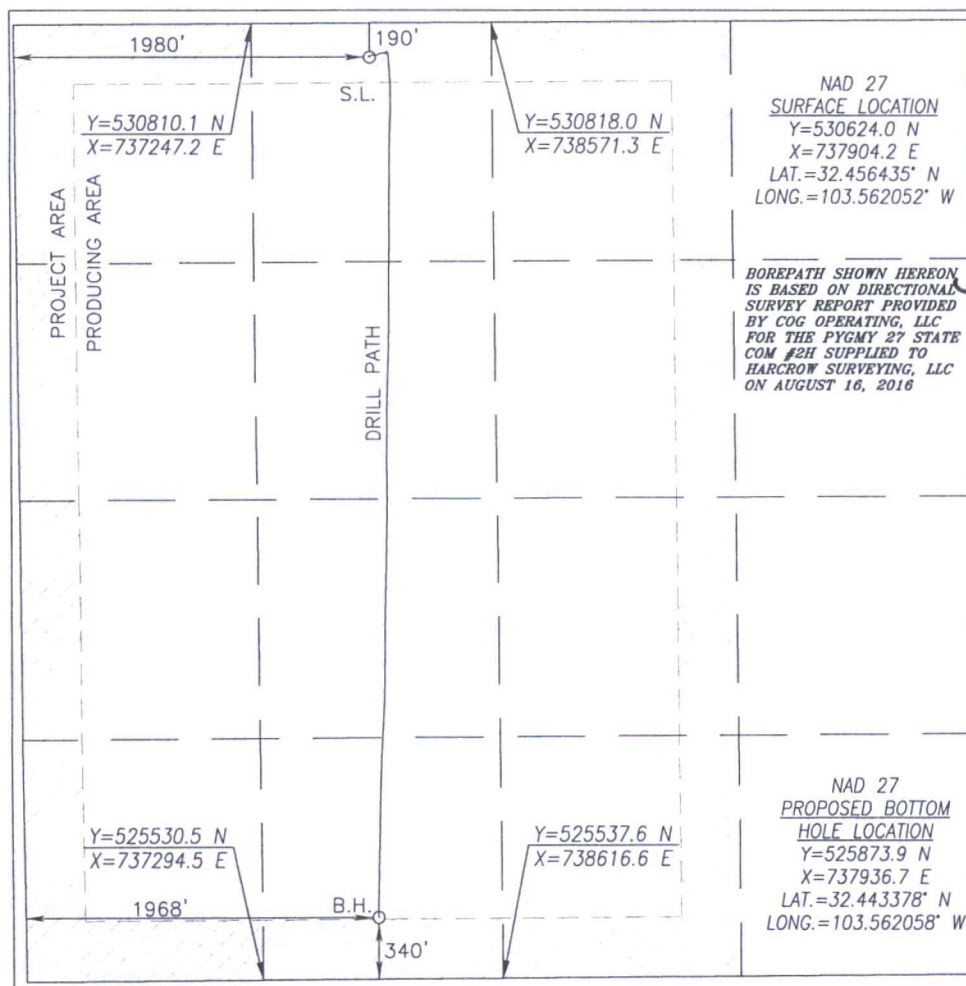
Surface Location

UL or lot No.	Section	Township	Range	Lot Idn	Feet from the	North/South line	Feet from the	East/West line	County
C	27	21-S	33-E		190	NORTH	1980	WEST	LEA

Bottom Hole Location If Different From Surface

UL or lot No.	Section	Township	Range	Lot Idn	Feet from the	North/South line	Feet from the	East/West line	County
N	27	21-S	33-E		340	SOUTH	1968	WEST	LEA
Dedicated Acres 480	Joint or Infill	Consolidation Code	Order No. R-14033-A						

NO ALLOWABLE WILL BE ASSIGNED TO THIS COMPLETION UNTIL ALL INTERESTS HAVE BEEN CONSOLIDATED
OR A NON-STANDARD UNIT HAS BEEN APPROVED BY THE DIVISION



OPERATOR CERTIFICATION

I hereby certify that the information herein is true and complete to the best of my knowledge and belief, and that this organization either owns a working interest or unleased mineral interest in the land including the proposed bottom hole location or has a right to drill this well at this location pursuant to a contract with an owner of such mineral or working interest, or to a voluntary pooling agreement or a compulsory pooling order heretofore entered by the division.

Signature _____ Date _____

Bobbie Goodloe

Printed Name

bgoodloe@concho.com

E-mail Address

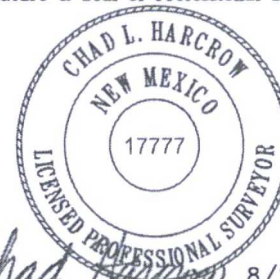
SURVEYOR CERTIFICATION

I hereby certify that the well location shown on this plat was plotted from field notes of actual surveys made by me or under my supervision, and that the same is true and correct to the best of my belief.

JUNE 18, 2014/AUG. 16, 2016

Date of Survey/Date of Geographic Survey

Signature & Seal of Professional Surveyor



8/25/16

Certificate No. CHAD HARCROW 17777

W.O. #16-649 DRAWN BY: CF