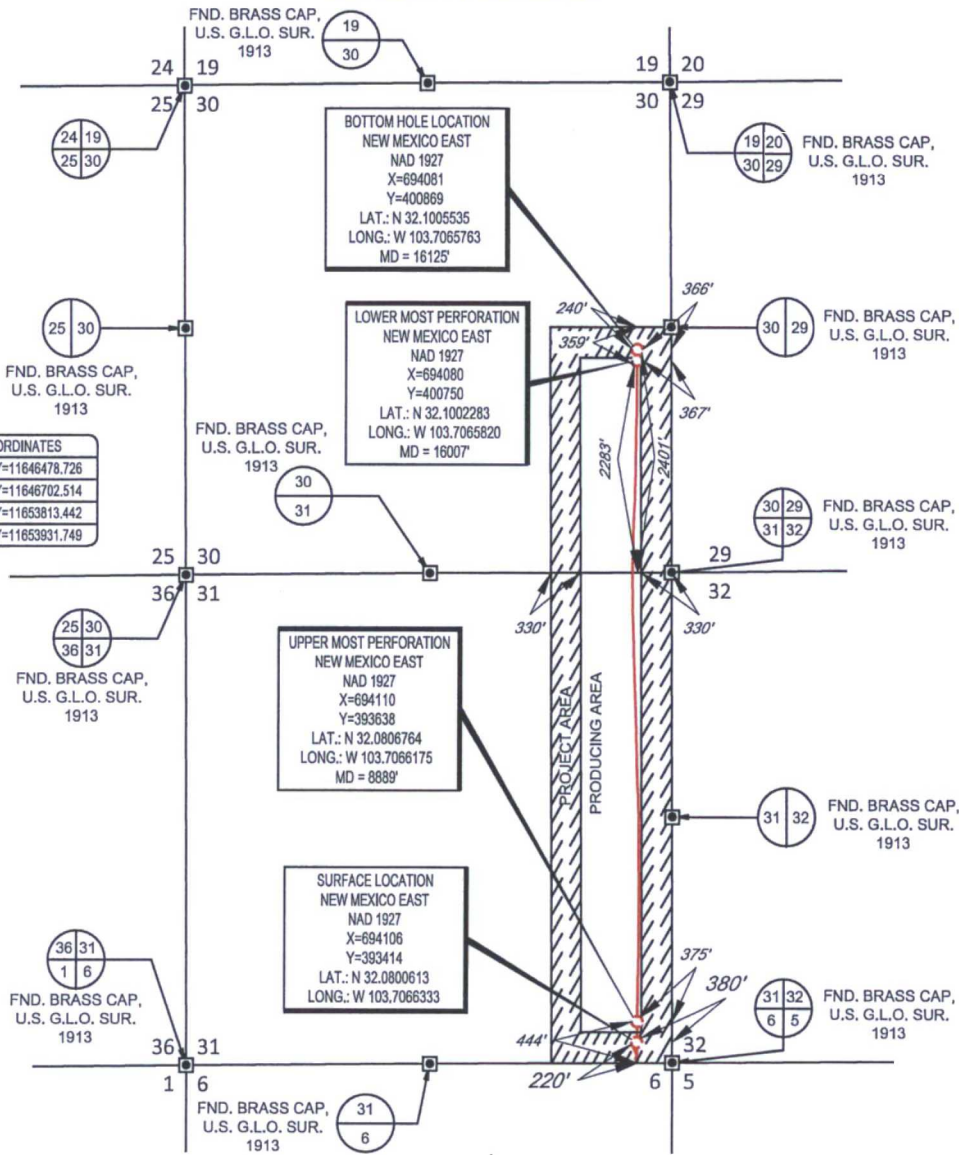


SCALE: 1" = 2000'

0' 1000' 2000'

SECTION 31, TOWNSHIP 25 SOUTH, RANGE 32 EAST, N.M.P.M.
LEA COUNTY, NEW MEXICO

POINT	UTM ZONE 13 COORDINATES
SHL	X=2040895.814 Y=11646478.726
UMP	X=2040898.032 Y=11646702.514
LMP	X=2040823.713 Y=11653813.442
THL	X=2040824.067 Y=11653931.749



LEASE NAME & WELL NO.: ALMOST EDDY 31 FED #1H
SECTION 31 TWP 25-S RGE 32-E SURVEY N.M.P.M.
COUNTY LEA STATE NM ELEVATION 3349'
DESCRIPTION 220' FSL & 380' FEL



Michael Blake Brown, P.S. No. 18329
SEPTEMBER 21, 2017



TOPOGRAPHIC
LOYALTY INNOVATION LEGACY

1400 EVERMAN PARKWAY, Ste. 197 • FT. WORTH, TEXAS 76140
TELEPHONE: (817) 744-7512 • FAX (817) 744-7548
2803 NORTH BIG SPRING • MIDLAND, TEXAS 79705
TELEPHONE: (432) 682-1653 OR (800) 767-1653 • FAX (432) 682-1743
WWW.TOPOGRAPHIC.COM

ALMOST EDDY 31 FED #1H AS-COMPLETED	REVISION:	
	INT	DATE
DATE: 09/21/17		
FILE: AD_ALMOSTEDDY31FED_1H		
DRAWN BY: EAH		
SHEET: 1 OF 1		

NOTES:

1. ORIGINAL DOCUMENT SIZE: 8.5" X 11"
2. ALL BEARINGS, DISTANCES, AND COORDINATE VALUES CONTAINED HEREIN ARE GRID BASED UPON THE NEW MEXICO STATE PLANE COORDINATE SYSTEM, EAST ZONE, U.S. SURVEY FEET, NORTH AMERICAN DATUM 1927.
3. CERTIFICATION IS MADE ONLY TO THE LOCATION OF THIS EASEMENT, IN RELATION TO THE EVIDENCE FOUND DURING A FIELD SURVEY. MADE ON THE GROUND, UNDER MY SUPERVISION, AND USING DOCUMENTATION PROVIDED BY EOG RESOURCES, INC. ONLY UTILITIES/EASEMENTS THAT WERE VISIBLE ON THE DATE OF THIS SURVEY, WITHIN/ADJOINING THIS EASEMENT, HAVE BEEN LOCATED AS SHOWN HEREON OF WHICH I HAVE KNOWLEDGE. THIS CERTIFICATION IS LIMITED TO THOSE PERSONS OR ENTITIES SHOWN ON THE FACE OF THIS PLAT AND IS NON-TRANSFERABLE, AND MADE FOR THIS TRANSACTION ONLY.