

District I  
1625 N. French Dr., Hobbs, NM 88240  
Phone: (575) 393-6161 Fax: (575) 393-0720  
District II  
811 S. First St., Artesia, NM 88210  
Phone: (575) 748-1283 Fax: (575) 748-9720  
District III  
1000 Rio Brazos Road, Aztec, NM 87410  
Phone: (505) 334-6178 Fax: (505) 334-6170  
District IV  
1220 S. St. Francis Dr., Santa Fe, NM 87505  
Phone: (505) 476-3460 Fax: (505) 476-3462

State of New Mexico  
Energy, Minerals & Natural Resources Department  
OIL CONSERVATION DIVISION  
1220 South St. Francis Dr.  
Santa Fe, NM 87505

**HOBBS OCD**  
**NOV 16 2017**  
**RECEIVED**

Form C-102  
Revised August 1, 2011  
Submit one copy to appropriate  
District Office

☒ AMENDED REPORT

WELL LOCATION AND ACREAGE DEDICATION PLAT

<sup>1</sup> API Number 30-025-43160		<sup>2</sup> Pool Code 97900		<sup>3</sup> Pool Name RED HILLS UPPER BONE SPRING SHALE	
<sup>4</sup> Property Code 719752		<sup>5</sup> Property Name SALADO DRAW 10 A3NC FED COM			<sup>6</sup> Well Number 4H
<sup>7</sup> GRID NO. 14744		<sup>8</sup> Operator Name MEWBOURNE OIL COMPANY			<sup>9</sup> Elevation 3301'

<sup>10</sup> Surface Location

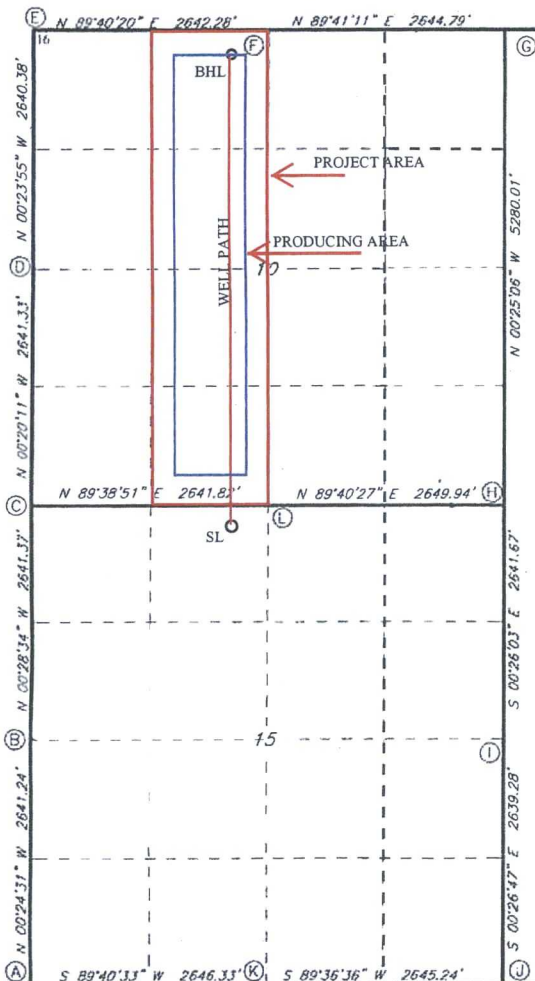
UL or lot no.	Section	Township	Range	Lot Idn	Feet from the	North/South line	Feet From the	East/West line	County
C	15	26S	33E		185	NORTH	2250	WEST	LEA

<sup>11</sup> Bottom Hole Location If Different From Surface

UL or lot no.	Section	Township	Range	Lot Idn	Feet from the	North/South line	Feet from the	East/West line	County
C	10	26S	33E		330	NORTH	2250	WEST	LEA

<sup>12</sup> Dedicated Acres 160	<sup>13</sup> Joint or Infill	<sup>14</sup> Consolidation Code	<sup>15</sup> Order No.
--------------------------------------	-------------------------------	----------------------------------	-------------------------

No allowable will be assigned to this completion until all interest have been consolidated or a non-standard unit has been approved by the division.



Surface Location  
LAT: 32.05010256 N  
LONG: 103.56099947 W  
Bottom Hole  
Lat: 32 3'51.162 N  
Long: 103 33' 39.558 W

CORNER DATA  
NAD 27 GRID - NM EAST  
A: FOUND BRASS CAP "1913"  
N 377698.0 - E 737082.0  
B: FOUND BRASS CAP "1913"  
N 380338.7 - E 737063.2  
C: CALCULATED CORNER  
N 382979.6 - E 737041.3  
D: FOUND BRASS CAP "1913"  
N 385620.4 - E 737025.8  
E: FOUND BRASS CAP "1913"  
N 388260.2 - E 737007.4  
F: FOUND BRASS CAP "1913"  
N 388275.3 - E 739649.2  
G: FOUND BRASS CAP "1913"  
N 388289.8 - E 742293.4  
H: FOUND BRASS CAP "1913"  
N 383010.9 - E 742332.0  
I: FOUND BRASS CAP "1913"  
N 380369.7 - E 742352.0  
J: FOUND BRASS CAP "1913"  
N 377731.0 - E 742372.6  
K: FOUND BRASS CAP "1913"  
N 377713.0 - E 739727.9  
L: FOUND BRASS CAP "1913"  
N 382995.8 - E 739682.6

<sup>17</sup> OPERATOR CERTIFICATION

I hereby certify that the information contained herein is true and complete to the best of my knowledge and belief, and that this organization either owns a working interest or unleased mineral interest in the land including the proposed bottom hole location or has a right to drill this well at this location pursuant to a contract with an owner of such a mineral or working interest, or to a voluntary pooling agreement or a compulsory pooling order heretofore entered by the division

Signature BRADLEY BISHOP Date 03-01-2017  
Printed Name  
E-mail Address BBISHOP@MEWBOURNE.COM

<sup>18</sup> SURVEYOR CERTIFICATION

I hereby certify that the well location shown on this plat was plotted from field notes of actual surveys made by me or under my supervision, and that the same is true and correct to the best of my belief.

5-12-2015

Date of Survey

Signature and Seal of Professional Surveyor

19680

Certificate Number

REV. 7-11-2016 BH LOCATION / NAME CHANGE

RRC - Firm No.: TX 10193838 NM 4655451 - Job No.: LS1505227