

District I
1625 N. French Dr., Hobbs, NM 88240
Phone: (575) 393-6161 Fax: (575) 393-0720
District II
811 S. First St., Artesia, NM 88210
Phone: (575) 748-1283 Fax: (575) 748-9720
District III
1000 Rio Brazos Road, Aztec, NM 87410
Phone: (505) 334-6178 Fax: (505) 334-6170
District IV
1220 S. St. Francis Dr., Santa Fe, NM 87505
Phone: (505) 476-3460 Fax: (505) 476-3462

State of New Mexico
Energy, Minerals & Natural Resources Department
OIL CONSERVATION DIVISION
1220 South St. Francis Dr.
Santa Fe, NM 87505

HOBBS OCD
OCT 16 2017
RECEIVED

Form C-102
Revised August 1, 2011
Submit one copy to appropriate
District Office

☒ AMENDED REPORT

WELL LOCATION AND ACREAGE DEDICATION PLAT

¹ API Number 30-025-43198		² Pool Code 83600		³ Pool Name RED HILLS WOLFCAMP GAS	
⁴ Property Code 319743		⁵ Property Name SALADO DRAW 10 W INC FED COM			⁶ Well Number 2H
⁷ GRID NO. 14744		⁸ Operator Name MEWBOURNE OIL COMPANY			⁹ Elevation 3302'

¹⁰ Surface Location

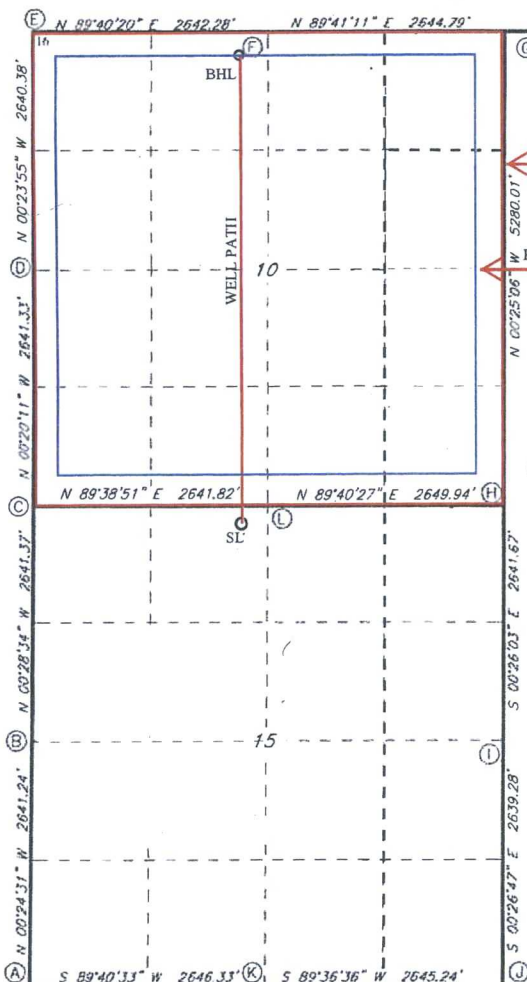
UL or lot no.	Section	Township	Range	Lot Idn	Feet from the	North/South line	Feet From the	East/West line	County
C	15	26S	33E		185	NORTH	2310	WEST	LEA

¹¹ Bottom Hole Location If Different From Surface

UL or lot no.	Section	Township	Range	Lot Idn	Feet from the	North/South line	Feet from the	East/West line	County
C	10	26S	33E		330	NORTH	2310	WEST	LEA

¹² Dedicated Acres 640	¹³ Joint or Infill	¹⁴ Consolidation Code	¹⁵ Order No.
--------------------------------------	-------------------------------	----------------------------------	-------------------------

No allowable will be assigned to this completion until all interest have been consolidated or a non-standard unit has been approved by the division.



PROJECT AREA
PRODUCING AREA

Surface Location
LAT: 32.05010238 N
LONG: 103.56080571 W
Bottom Hole
Lat: 32 3'51.68 N
Long: 103 33' 38.868 W

CORNER DATA
NAD 27 GRID - NM EAST
A: FOUND BRASS CAP "1913"
N 377698.0 - E 737082.0
B: FOUND BRASS CAP "1913"
N 380338.7 - E 737063.2
C: CALCULATED CORNER
N 382979.6 - E 737041.3
D: FOUND BRASS CAP "1913"
N 385620.4 - E 737025.8
E: FOUND BRASS CAP "1913"
N 388260.2 - E 737007.4
F: FOUND BRASS CAP "1913"
N 388275.3 - E 739649.2
G: FOUND BRASS CAP "1913"
N 388289.8 - E 742293.4
H: FOUND BRASS CAP "1913"
N 383010.9 - E 742332.0
I: FOUND BRASS CAP "1913"
N 380369.7 - E 742352.0
J: FOUND BRASS CAP "1913"
N 377731.0 - E 742372.6
K: FOUND BRASS CAP "1913"
N 377713.0 - E 739727.9
L: FOUND BRASS CAP "1913"
N 382995.8 - E 739682.6

¹⁷ OPERATOR CERTIFICATION

I hereby certify that the information contained herein is true and complete to the best of my knowledge and belief, and that this organization either owns a working interest or unleased mineral interest in the land including the proposed bottom hole location or has a right to drill this well at this location pursuant to a contract with an owner of such a mineral or working interest, or to a voluntary pooling agreement or a compulsory pooling order heretofore entered by the division

Signature: **BRADLEY BISHOP**
Date: **03-01-2017**
Printed Name: **BRADLEY BISHOP**
E-mail Address: **BBISHOP@MEWBOURNE.COM**

¹⁸ SURVEYOR CERTIFICATION

I hereby certify that the well location shown on this plat was plotted from field notes of actual surveys made by me or under my supervision, and that the same is true and correct to the best of my belief.

5-12-2015

Date of Survey: **5-12-2015**
Signature and Seal of Professional Surveyor: **ROBERT M. HOWETT**

19680
Certificate Number: **19680**
REV. 7-11-2016 BH LOCATION / NAME CHANGE