

District I  
1625 N. French Dr., Hobbs, NM 88240  
Phone: (575) 393-6161 Fax: (575) 393-0720  
District II  
811 S. First St., Artesia, NM 88210  
Phone: (575) 748-1283 Fax: (575) 748-9720  
District III  
1000 Rio Brazos Road, Aztec, NM 87410  
Phone: (505) 334-6178 Fax: (505) 334-6170  
District IV  
1220 S. St. Francis Dr., Santa Fe, NM 87505  
Phone: (505) 476-3460 Fax: (505) 476-3460

**HOBBS OGD**  
**RECEIVED**  
JUN 08 2017

State of New Mexico  
Energy, Minerals & Natural Resources Department  
OIL CONSERVATION DIVISION  
1220 South St. Francis Dr.  
Santa Fe, NM 87505

Form C-102  
Revised August 1, 2011  
Submit one copy to appropriate  
District Office

☐ AMENDED REPORT

WELL LOCATION AND ACREAGE DEDICATION PLAT

<sup>1</sup> API Number <b>30-025-42814</b>	<sup>2</sup> Pool Code <b>97922</b>	<sup>3</sup> Pool Name <b>WC-025 G-06 S223421L; Bone Spring</b>
<sup>4</sup> Property Code <b>30863</b>	<sup>5</sup> Property Name <b>GAUCHO UNIT</b>	<sup>6</sup> Well Number <b>23H</b>
<sup>7</sup> OGRID No. <b>6137</b>	<sup>8</sup> Operator Name <b>DEVON ENERGY PRODUCTION COMPANY, L.P.</b>	<sup>9</sup> Elevation <b>3470.1</b>

<sup>10</sup> Surface Location

UL or lot no.	Section	Township	Range	Lot Idn	Feet from the	North/South line	Feet from the	East/West line	County
<b>P</b>	<b>17</b>	<b>22 S</b>	<b>34 E</b>		<b>225</b>	<b>SOUTH</b>	<b>870</b>	<b>EAST</b>	<b>LEA</b>

<sup>11</sup> Bottom Hole Location If Different From Surface

UL or lot no.	Section	Township	Range	Lot Idn	Feet from the	North/South line	Feet from the	East/West line	County
<b>A</b>	<b>17</b>	<b>22 S</b>	<b>34 E</b>		<b>328</b>	<b>NORTH</b>	<b>687</b>	<b>EAST</b>	<b>LEA</b>

<sup>12</sup> Dedicated Acres <b>160</b>	<sup>13</sup> Joint or Infill	<sup>14</sup> Consolidation Code	<sup>15</sup> Order No.
---	-------------------------------	----------------------------------	-------------------------

No allowable will be assigned to this completion until all interests have been consolidated or a non-standard unit has been approved by the division.

<p>N89°35'07"E 2636.66 FT</p> <p>NW CORNER SEC. 17 LAT. = 32.3989717°N LONG. = 103.5005936°W NMSP EAST (FT) N = 509878.09 E = 798356.73</p> <p>N/4 CORNER SEC. 17 LAT. = 32.3989674°N LONG. = 103.4920528°W NMSP EAST (FT) N = 509897.17 E = 800992.86</p> <p>BOTTOM OF HOLE LAT. = 32.3980532°N LONG. = 103.4856584°W NMSP EAST (FT) N = 509580.14 E = 802969.16</p> <p>NOTE: LATITUDE AND LONGITUDE COORDINATES ARE SHOWN USING THE NORTH AMERICAN DATUM OF 1983 (NAD83). LISTED NEW MEXICO STATE PLANE EAST COORDINATES ARE GRID (NAD83). BASIS OF BEARING AND DISTANCES USED ARE NEW MEXICO STATE PLANE EAST COORDINATES MODIFIED TO THE SURFACE.</p> <p>W/4 CORNER SEC. 17 LAT. = 32.3917093°N LONG. = 103.5006093°W NMSP EAST (FT) N = 507235.94 E = 798372.45</p> <p>GAUCHO UNIT 23H ELEV. = 3470.1' LAT. = 32.3850631°N (NAD83) LONG. = 103.4863605°W NMSP EAST (FT) N = 504852.54 E = 802789.87</p> <p>SW CORNER SEC. 17 LAT. = 32.3844523°N LONG. = 103.5006223°W NMSP EAST (FT) N = 504595.75 E = 798388.98</p> <p>S/4 CORNER SEC. 17 LAT. = 32.3844466°N LONG. = 103.4920936°W NMSP EAST (FT) N = 504614.27 E = 801021.83</p> <p>Bottom of Hole LAT. = 32.3989575°N LONG. = 103.4833194°W NMSP EAST (FT) N = 509914.39 E = 803626.75</p> <p>E/4 CORNER SEC. 17 LAT. = 32.3917126°N LONG. = 103.4835282°W NMSP EAST (FT) N = 507278.62 E = 803544.97</p> <p>SE CORNER SEC. 17 LAT. = 32.3844435°N LONG. = 103.4835441°W NMSP EAST (FT) N = 504634.03 E = 803561.09</p> <p>225' 870'</p> <p>328' 687'</p> <p>500'20'28"W 2642.66 FT</p> <p>500'21'31"W 2640.70 FT</p> <p>500'23'46"E 2636.30 FT</p> <p>500'20'57"E 2645.10 FT</p> <p>589°35'49"W 2633.38 FT</p> <p>589°34'16"W 2639.80 FT</p>		<p><b><sup>17</sup> OPERATOR CERTIFICATION</b></p> <p>I hereby certify that the information contained herein is true and complete to the best of my knowledge and belief, and that this organization either owns a working interest or unleased mineral interest in the land including the proposed bottom hole location or has a right to drill this well at this location pursuant to a contract with an owner of such a mineral or working interest, or to a voluntary pooling agreement or a compulsory pooling order heretofore entered by the division.</p> <p><i>Rebecca Deal</i> 5/23/2017 Signature Date Rebecca Deal, Regulatory Analyst Printed Name rebecca.deal@dmv.com E-mail Address</p> <p><b><sup>18</sup> SURVEYOR CERTIFICATION</b></p> <p>I hereby certify that the well location shown on this plat was plotted from field notes of actual surveys made by me or under my supervision, and that the same is true and correct to the best of my belief.</p> <p>JANUARY 14, 2015 Date of Survey</p> <p><i>[Signature]</i> Signature and Seal of Professional Surveyor</p> <p>Certificate Number FILMONT, JARAMILLO, PLS 12797 SURVEY NO. 3586</p>
---	--	--

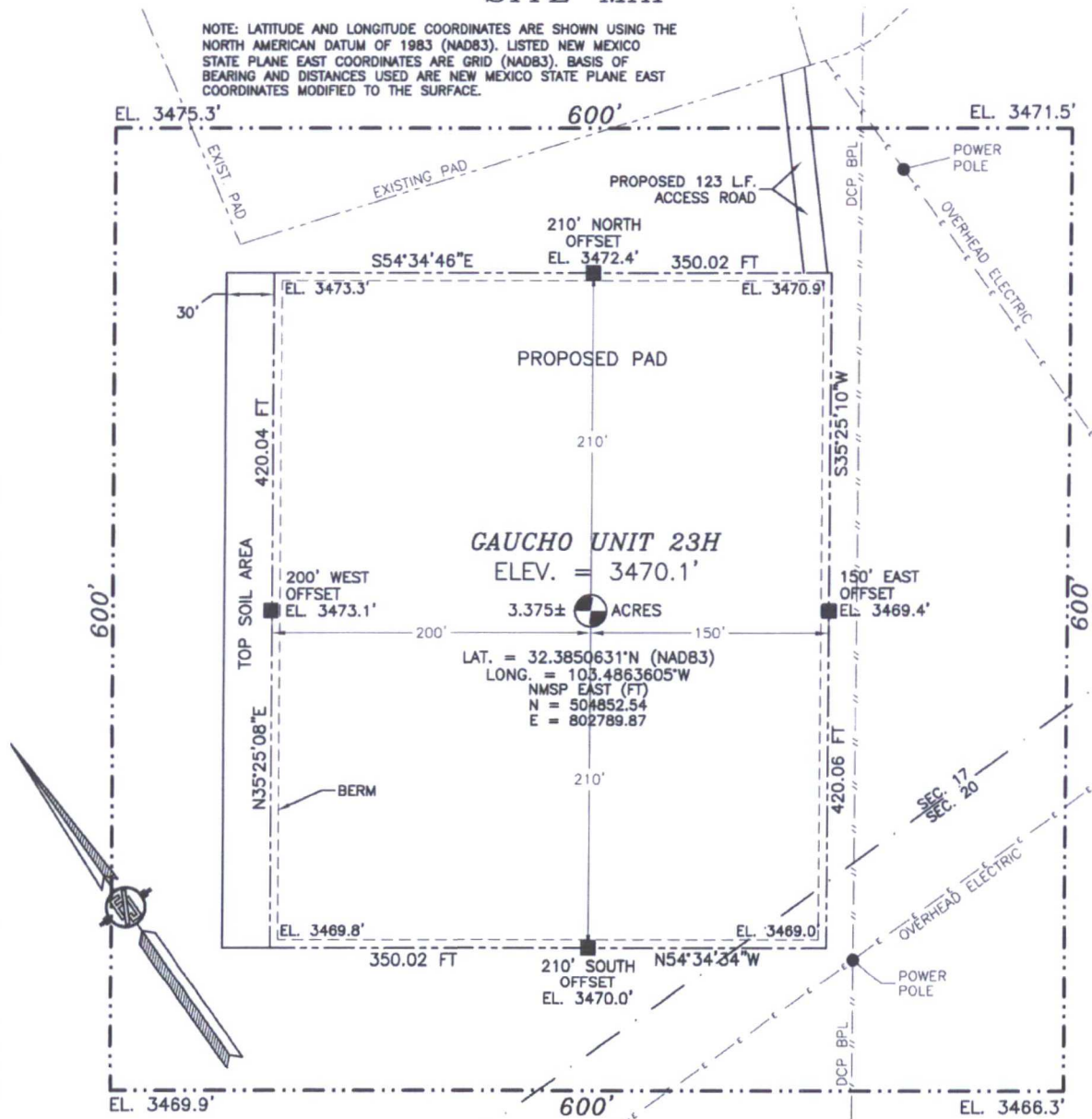
PP: 208' FSL & 918' FEL, Sec 17, T22S, R34E

Project Area: [REDACTED]

Producing Area: [REDACTED]

SECTION 17, TOWNSHIP 22 SOUTH, RANGE 34 EAST, N.M.P.M.  
LEA COUNTY, STATE OF NEW MEXICO

NOTE: LATITUDE AND LONGITUDE COORDINATES ARE SHOWN USING THE NORTH AMERICAN DATUM OF 1983 (NAD83). LISTED NEW MEXICO STATE PLANE EAST COORDINATES ARE GRID (NAD83). BASIS OF BEARING AND DISTANCES USED ARE NEW MEXICO STATE PLANE EAST COORDINATES MODIFIED TO THE SURFACE.



010      50      100      200

SCALE 1" = 100'

### DIRECTIONS TO LOCATION

FROM THE INTERSECTION OF STATE HWY 128 & DELAWARE BASIN ROAD GO NORTH THEN EAST ON DELAWARE BASIN ROAD APPROX. 9.2 MILES TO A LEASE ROAD ON LEFT (NORTH) TURN NORTH FOLLOW LEASE ROAD NORTHWEST PASS FRAC POND APPROX. 4.5 MILES TO A 4 WAY INTERSECTION TURN RIGHT (NORTHEAST) GO APPROX. 0.7 MILES TO A LEASE ROAD ON RIGHT (SOUTH) TURN SOUTH GO APPROX. 0.4 MILES TURN RIGHT (WEST) GO 0.1 MILES TO EXISTING PAD LOCATION IS 250' SOUTH OF PAD

DEVON ENERGY PRODUCTION COMPANY, L.P.  
GAUCHO UNIT 23H

LOCATED 225 FT. FROM THE SOUTH LINE  
AND 870 FT. FROM THE EAST LINE OF  
SECTION 17, TOWNSHIP 22 SOUTH,  
RANGE 34 EAST, N.M.P.M.  
LEA COUNTY, STATE OF NEW MEXICO

JANUARY 14, 2015

*SURVEY NO. 3586*

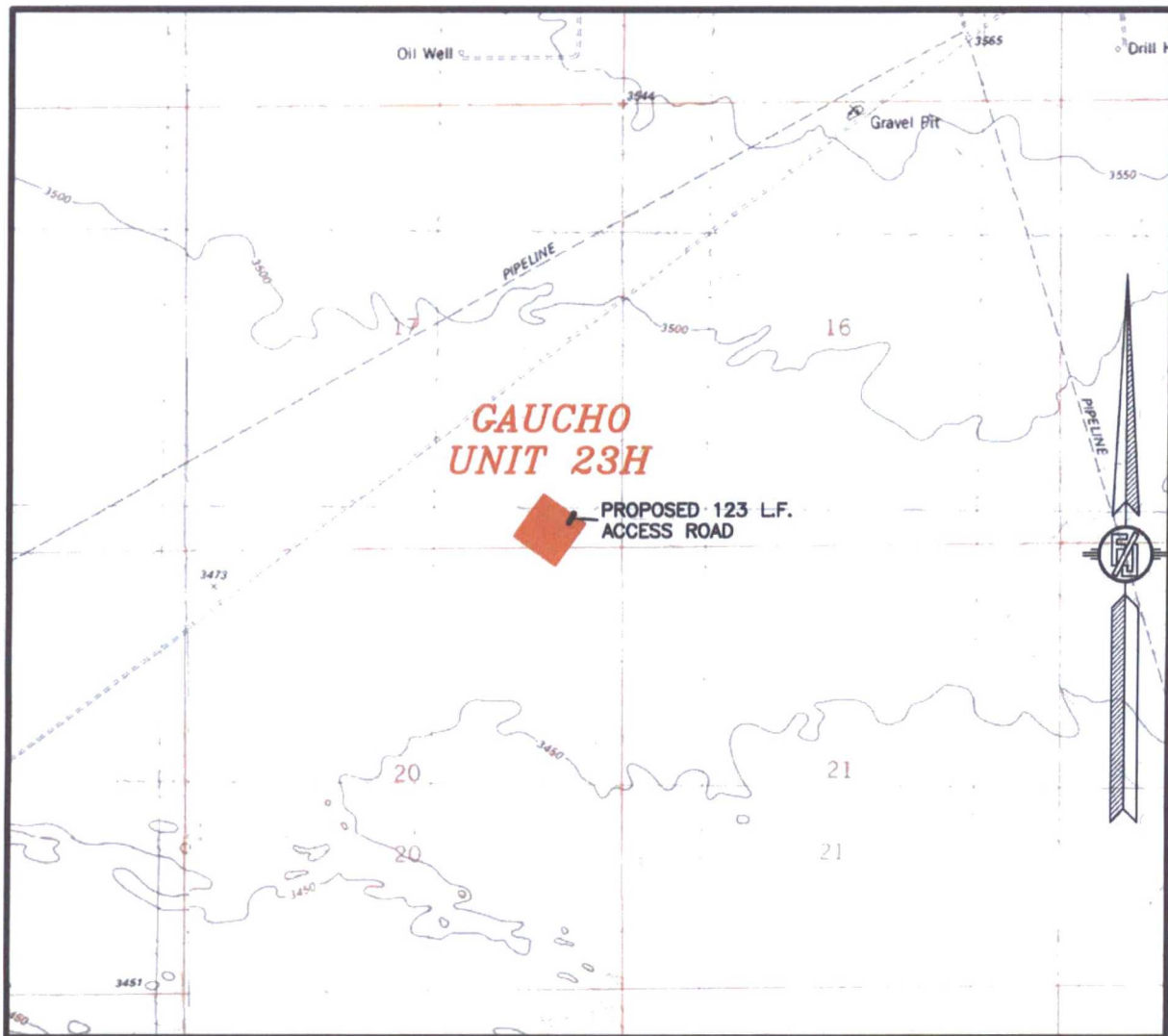
**MADRON SURVEYING, INC.** 301 SOUTH CANAL  
(575) 234-3341

301 SOUTH CANAL  
(575) 234-3341

**MADRON SURVEYING, INC.** 301 SOUTH CANAL (575) 234-3341 **CARLSBAD, NEW MEXICO**



SECTION 17, TOWNSHIP 22 SOUTH, RANGE 34 EAST, N.M.P.M.  
LEA COUNTY, STATE OF NEW MEXICO  
LOCATION VERIFICATION MAP



USGS QUAD MAP:  
SAN SIMON RANCH

NOT TO SCALE

DEVON ENERGY PRODUCTION COMPANY, L.P.  
GAUCHO UNIT 23H

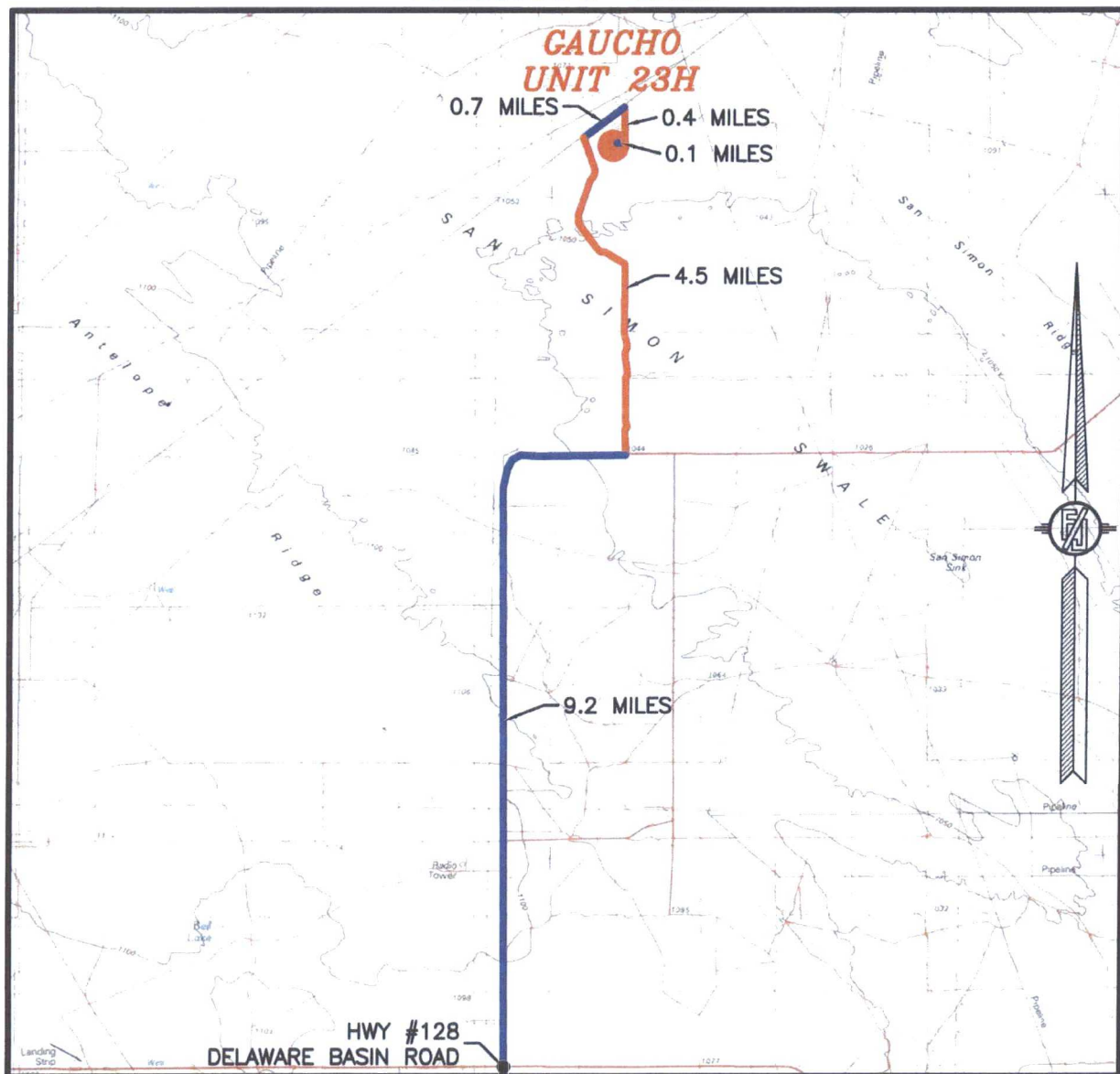
LOCATED 225 FT. FROM THE SOUTH LINE  
AND 870 FT. FROM THE EAST LINE OF  
SECTION 17, TOWNSHIP 22 SOUTH,  
RANGE 34 EAST, N.M.P.M.  
LEA COUNTY, STATE OF NEW MEXICO

JANUARY 14, 2015

MADRON SURVEYING, INC. 301 SOUTH CANAL  
(575) 234-3341

SURVEY NO. 3586  
CARLSBAD, NEW MEXICO

SECTION 17, TOWNSHIP 22 SOUTH, RANGE 34 EAST, N.M.P.M.  
LEA COUNTY, STATE OF NEW MEXICO  
VICINITY MAP



DISTANCES IN MILES

NOT TO SCALE

**DIRECTIONS TO LOCATION**

FROM THE INTERSECTION OF STATE HWY 128 & DELAWARE BASIN ROAD GO NORTH THEN EAST ON DELAWARE BASIN ROAD APPROX. 9.2 MILES TO A LEASE ROAD ON LEFT (NORTH) TURN NORTH FOLLOW LEASE ROAD NORTHWEST PASS FRAC POND APPROX. 4.5 MILES TO A 4 WAY INTERSECTION TURN RIGHT (NORTHEAST) GO APPROX. 0.7 MILES TO A LEASE ROAD ON RIGHT (SOUTH) TURN SOUTH GO APPROX. 0.4 MILES TURN RIGHT (WEST) GO 0.1 MILES TO EXISTING PAD LOCATION IS 250' SOUTH OF PAD

**DEVON ENERGY PRODUCTION COMPANY, L.P.  
GAUCHO UNIT 23H**

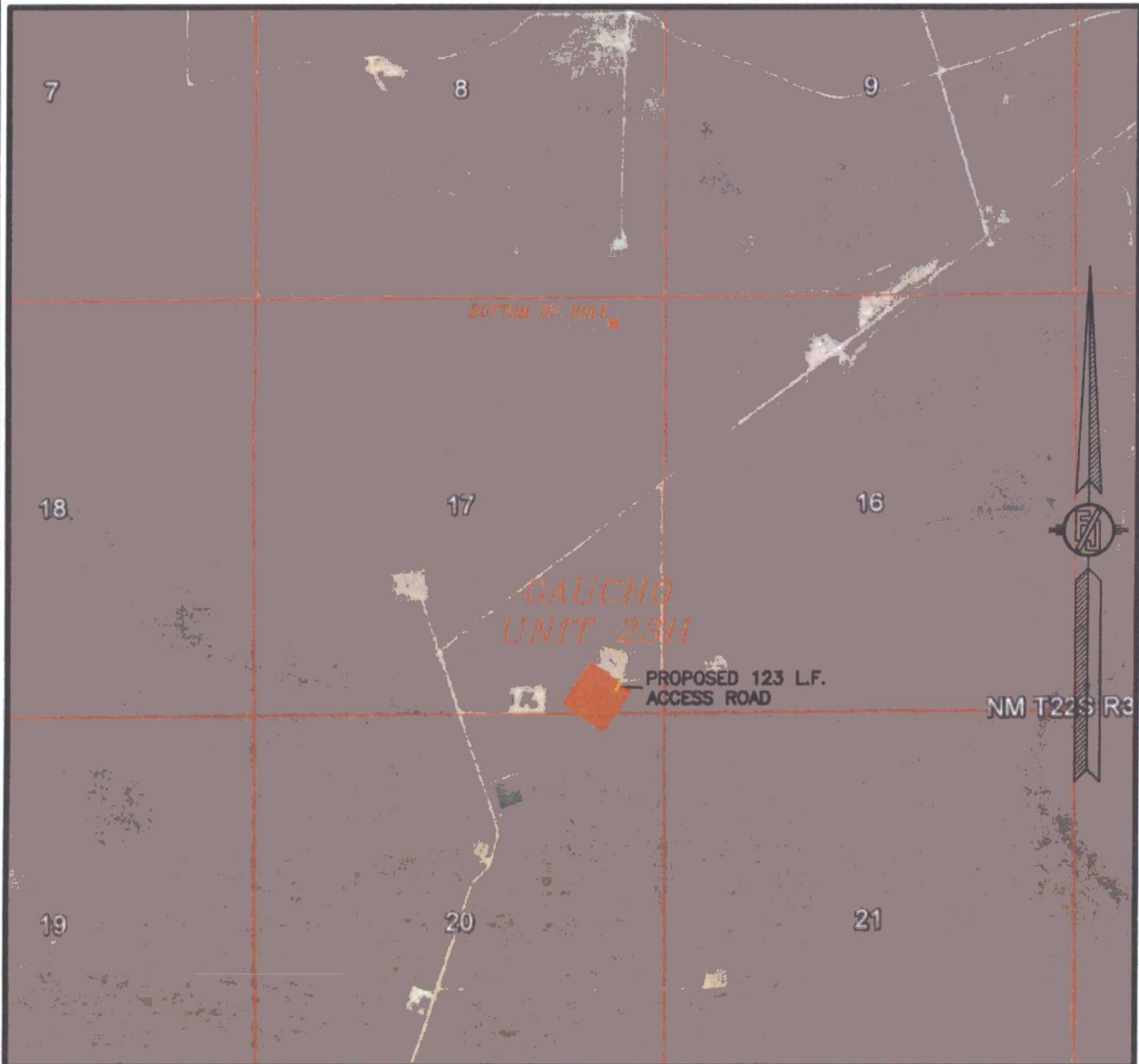
LOCATED 225 FT. FROM THE SOUTH LINE  
AND 870 FT. FROM THE EAST LINE OF  
SECTION 17, TOWNSHIP 22 SOUTH,  
RANGE 34 EAST, N.M.P.M.  
LEA COUNTY, STATE OF NEW MEXICO

JANUARY 14, 2015

SURVEY NO. 3586

MADRON SURVEYING, INC. 301 SOUTH CANAL (575) 234-3341 CARLSBAD, NEW MEXICO

SECTION 17, TOWNSHIP 22 SOUTH, RANGE 34 EAST, N.M.P.M.  
LEA COUNTY, STATE OF NEW MEXICO  
**AERIAL PHOTO**



NOT TO SCALE  
AERIAL PHOTO:  
GOOGLE EARTH  
FEB. 2014

**DEVON ENERGY PRODUCTION COMPANY, L.P.**  
**GAUCHO UNIT 23H**

LOCATED 225 FT. FROM THE SOUTH LINE  
AND 870 FT. FROM THE EAST LINE OF  
SECTION 17, TOWNSHIP 22 SOUTH,  
RANGE 34 EAST, N.M.P.M.  
LEA COUNTY, STATE OF NEW MEXICO

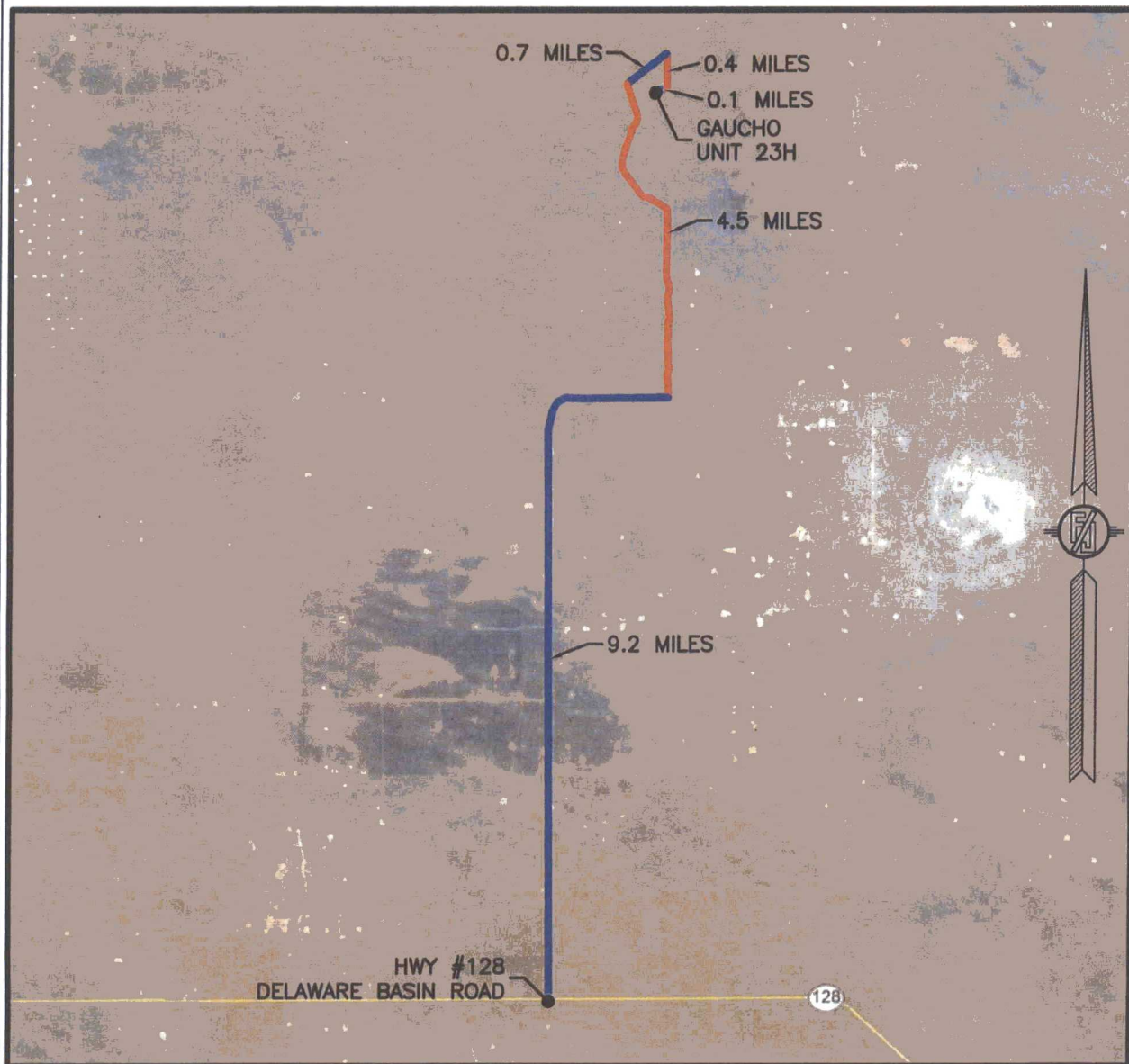
JANUARY 14, 2015

SURVEY NO. 3586

MADRON SURVEYING, INC. 301 SOUTH CANAL (575) 234-3341 CARLSBAD, NEW MEXICO



SECTION 17, TOWNSHIP 22 SOUTH, RANGE 34 EAST, N.M.P.M.  
LEA COUNTY, STATE OF NEW MEXICO  
AERIAL ACCESS ROUTE MAP



NOT TO SCALE  
AERIAL PHOTO:  
GOOGLE EARTH  
FEB. 2014

DEVON ENERGY PRODUCTION COMPANY, L.P.  
GAUCHO UNIT 23H

LOCATED 225 FT. FROM THE SOUTH LINE  
AND 870 FT. FROM THE EAST LINE OF  
SECTION 17, TOWNSHIP 22 SOUTH,  
RANGE 34 EAST, N.M.P.M.  
LEA COUNTY, STATE OF NEW MEXICO

JANUARY 14, 2015

SURVEY NO. 3586

MADRON SURVEYING, INC. 301 SOUTH CANAL (575) 234-3341 CARLSBAD, NEW MEXICO