

District I  
1625 N. French Dr., Hobbs, NM 88240  
Phone: (575) 393-6161 Fax: (575) 393-0720  
District II  
811 S. First St., Artesia, NM 88210  
Phone: (575) 748-1283 Fax: (575) 748-9720  
District III  
1000 Rio Brazos Road, Aztec, NM 87410  
Phone: (505) 334-6178 Fax: (505) 334-6170  
District IV  
1220 S. St. Francis Dr., Santa Fe, NM 87505  
Phone: (505) 476-3460 Fax: (505) 476-3462

State of New Mexico  
Energy, Minerals & Natural Resources Department  
OIL CONSERVATION DIVISION  
1220 South St. Francis Dr.  
Santa Fe, NM 87505

Form C-102  
Revised August 1, 2011  
Submit one copy to appropriate  
District Office

☐ AMENDED REPORT

WELL LOCATION AND ACREAGE DEDICATION PLAT

<sup>1</sup> API Number <b>30-025-43469</b>	<sup>2</sup> Pool Code <b>59900</b>	<sup>3</sup> Pool Name <b>Triple X; Bone Spring</b>
<sup>4</sup> Property Code <b>30884</b>	<sup>5</sup> Property Name <b>THISTLE UNIT</b>	<sup>6</sup> Well Number <b>254H</b>
<sup>7</sup> OGRID No. <b>6137</b>	<sup>8</sup> Operator Name <b>DEVON ENERGY PRODUCTION COMPANY, L.P.</b>	<sup>9</sup> Elevation <b>3643.3</b>

<sup>10</sup> Surface Location

UL or lot no.	Section	Township	Range	Lot Idn	Feet from the	North/South line	Feet from the	East/West line	County
<b>O</b>	<b>34</b>	<b>23 S</b>	<b>33 E</b>		<b>248</b>	<b>SOUTH</b>	<b>1962</b>	<b>EAST</b>	<b>LEA</b>

<sup>11</sup> Bottom Hole Location If Different From Surface

UL or lot no.	Section	Township	Range	Lot Idn	Feet from the	North/South line	Feet from the	East/West line	County
<b>J</b>	<b>27</b>	<b>23 S</b>	<b>33 E</b>		<b>2600</b>	<b>SOUTH</b>	<b>1849</b>	<b>EAST</b>	<b>LEA</b>

<sup>12</sup> Dedicated Acres <b>240</b>	<sup>13</sup> Joint or Infill	<sup>14</sup> Consolidation Code	<sup>15</sup> Order No.
---	-------------------------------	----------------------------------	-------------------------

No allowable will be assigned to this completion until all interests have been consolidated or a non-standard unit has been approved by the division.

<p>NW CORNER SEC. 27 LAT. = 32.2829508°N LONG. = 103.5687577°W NMSP EAST (FT) N = 467512.36 E = 777619.12</p> <p>W Q CORNER SEC. 27 LAT. = 32.2756899°N LONG. = 103.5687542°W NMSP EAST (FT) N = 464870.84 E = 777639.03</p> <p>NW CORNER SEC. 34 LAT. = 32.2684420°N LONG. = 103.5687493°W NMSP EAST (FT) N = 462234.08 E = 777659.34</p> <p>W Q CORNER SEC. 34 LAT. = 32.2611700°N LONG. = 103.5687420°W NMSP EAST (FT) N = 459588.56 E = 777680.44</p> <p>SW CORNER SEC. 34 LAT. = 32.2539037°N LONG. = 103.5687408°W NMSP EAST (FT) N = 456945.13 E = 777699.63</p>	<p>N Q CORNER SEC. 27 LAT. = 32.2829394°N LONG. = 103.5602131°W NMSP EAST (FT) N = 467527.14 E = 780259.81</p> <p>BOTTOM OF HOLE LAT. = 32.2756526°N LONG. = 103.5576991°W NMSP EAST (FT) N = 464881.79 E = 781055.92</p> <p>2600'</p> <p>1849'</p> <p>THISTLE UNIT 254H ELEV. = 3643.3' LAT. = 32.2545705°N (NAD83) LONG. = 103.5580106°W NMSP EAST (FT) N = 457211.47 E = 781015.05</p> <p>248'</p> <p>1962'</p> <p>NOTE: LATITUDE AND LONGITUDE COORDINATES ARE SHOWN USING THE NORTH AMERICAN DATUM OF 1983 (NAD83) LISTED NEW MEXICO STATE PLANE EAST COORDINATES ARE (NAD83) BASIS OF BEARING AND DISTANCES USED ARE NEW MEXICO STATE PLANE EAST COORDINATES MODIFIED TO THE SURFACE, VERTICAL DATUM NAVD83.</p>	<p>NE CORNER SEC. 27 LAT. = 32.2829270°N LONG. = 103.5516698°W NMSP EAST (FT) N = 467541.76 E = 782900.10</p> <p>E Q CORNER SEC. 27 LAT. = 32.2757053°N LONG. = 103.5516694°W NMSP EAST (FT) N = 464914.49 E = 782919.36</p> <p>NE CORNER SEC. 34 LAT. = 32.2684152°N LONG. = 103.5516675°W NMSP EAST (FT) N = 462262.37 E = 782939.28</p> <p>SE CORNER SEC. 34 LAT. = 32.2538795°N LONG. = 103.5516653°W NMSP EAST (FT) N = 456974.34 E = 782978.47</p>	<p><b>17 OPERATOR CERTIFICATION</b> I hereby certify that the information contained herein is true and complete to the best of my knowledge and belief, and that this organization either owns a working interest or unleased mineral interest in the land including the proposed bottom hole location or has a right to drill this well at this location pursuant to a contract with an owner of such a mineral or working interest, or to a voluntary pooling agreement or a compulsory pooling order heretofore entered by the division. <i>Rebecca Deal</i> <b>10/19/2017</b> Signature Date <b>Rebecca Deal, Regulatory Analyst</b> Printed Name <b>rebecca.deal@dmv.com</b> E-mail Address</p> <p><b>18 SURVEYOR CERTIFICATION</b> I hereby certify that the well location shown on this plat was plotted from field notes of actual surveys made by me or under my supervision, and that the same is true and correct to the best of my belief. DECEMBER 8, 2016 Date of Survey Signature and Seal of Professional Surveyor Certificate Number: <b>ELIMON F. JARAMILLO, PLS 12797</b> SURVEY NO. 5044D</p>
---	--	--	---

# SITE MAP

**PROPOSED PAD**

**THISTLE UNIT 254H**  
 ELEV. = 3643.3'  
 4.478± ACRES  
 LAT. = 32.2545705°N (NAD83)  
 LONG. = 103.5580106°W  
 NMSP EAST (FT)  
 N = 457211.47  
 E = 781015.05

**THISTLE UNIT 112H**  
**THISTLE UNIT 132H**  
**THISTLE UNIT 113H**  
**THISTLE UNIT 137H**

**PROPOSED 171 LF ACCESS ROAD**  
**PROPOSED 58 LF ACCESS ROAD**

**EXISTING PAD**  
**DEVON BPL**  
**CALICHE ROAD**  
**TOPSOIL AREA**  
**BERM**  
**4/W POWER LINE**  
**B/W FENCE**

**EL. 3648.4'**  
**EL. 3645.9'**  
**EL. 3651.5'**  
**EL. 3648.6'**  
**EL. 3646.3'**  
**EL. 3647.3'**  
**EL. 3639.7'**  
**EL. 3639.9'**  
**EL. 3636.2'**  
**EL. 3638.4'**

**650'**  
**630'**  
**630'**  
**650'**

**210' NORTH OFFSET**  
**210' WEST OFFSET**  
**200' EAST OFFSET**  
**175' SOUTH OFFSET**

**N89°41'39"E 470.06 FT**  
**N00°18'19"W 415.03 FT**  
**S00°17'52"E 415.01 FT**  
**S89°41'28"W 470.00 FT**

**30'**  
**210'**  
**210'**  
**200'**  
**205'**  
**30'**  
**30'**  
**30'**  
**30'**

**SEC. 34**  
**SEC. 3**



SCALE 1" = 120'

FROM STATE HIGHWAY 128 AND CR J2 (BRININSTOOL) GO NORTH ON CR J2 3.1 MILES, TURN RIGHT ON CALICHE ROAD AND GO EAST 0.44 OF A MILE, BEND LEFT AND GO NORTH 0.1 OF A MILE, BEND RIGHT AND GO SOUTHEAST 0.31 OF A MILE TO A PROPOSED ROAD SURVEY AND FOLLOW FLAGS SOUTH 58' TO THE NORTHEAST PAD CORNER FOR THIS LOCATION.

LOCATED 248 FT. FROM THE SOUTH LINE  
AND 1962 FT. FROM THE EAST LINE OF  
SECTION 34, TOWNSHIP 23 SOUTH,  
RANGE 33 EAST, N.M.P.M.  
LEA COUNTY, STATE OF NEW MEXICO

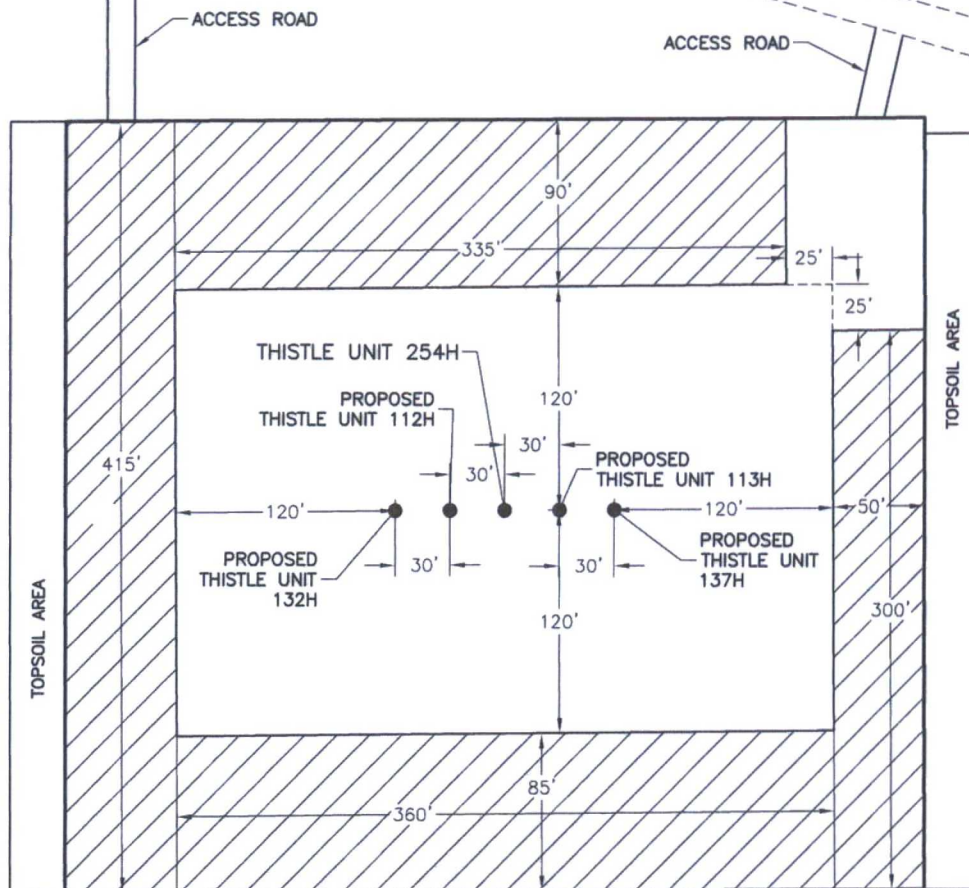
SURVEY NO. 5044D.

MADRON SURVEYING, INC. 301 SOUTH CANAL  
(575) 234-3341

CARLSBAD, NEW MEXICO



**PROPOSED INTERIM SITE RECLAMATION  
FOR THISTLE UNIT 254H**  
SECTION 34, TOWNSHIP 23 SOUTH, RANGE 33 EAST, N.M.P.M.  
LEA COUNTY, STATE OF NEW MEXICO



 DENOTES  
RECLAMATION AREA  
2.311± ACRES RECLAMATION AREA

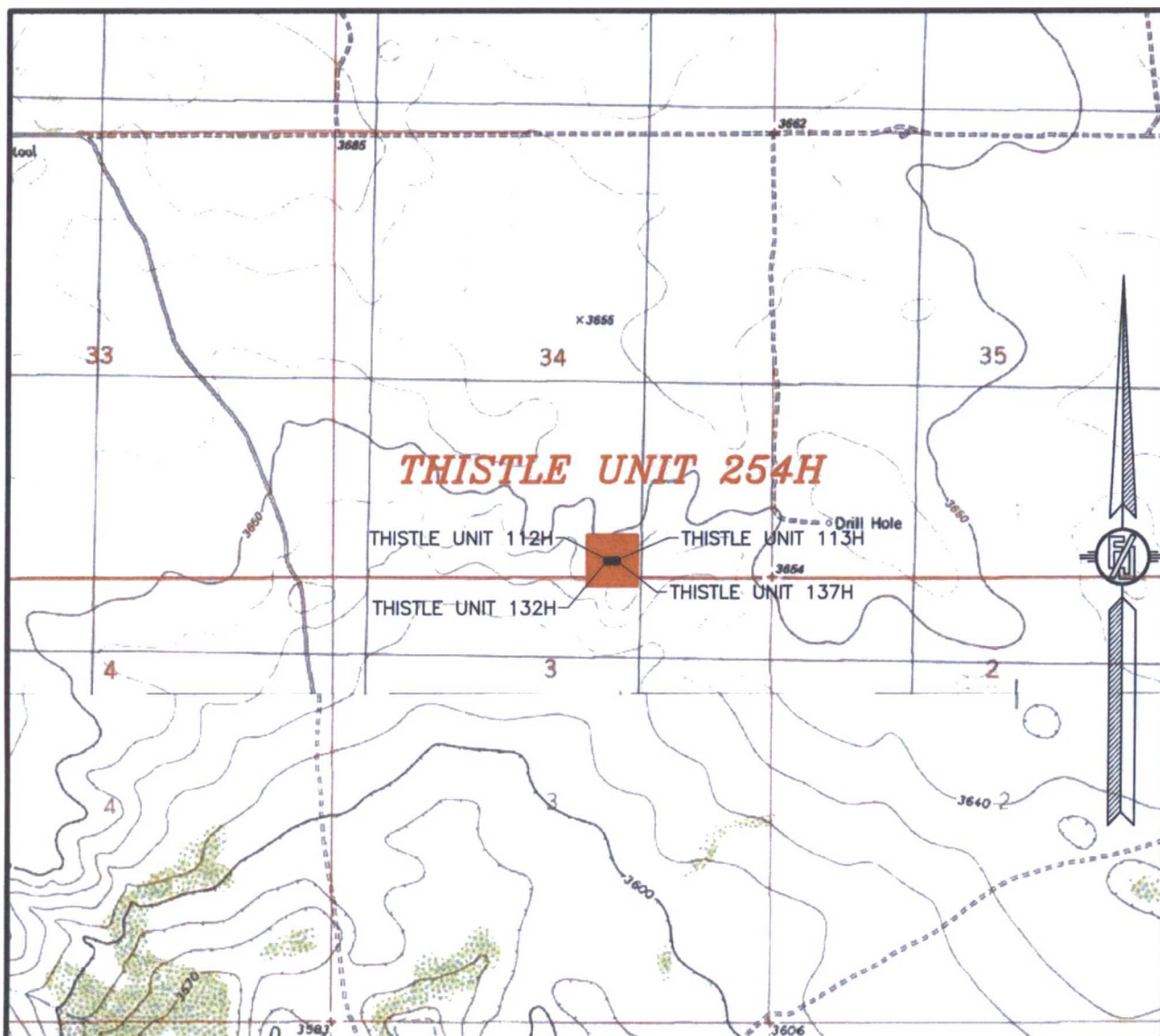
010 50 100 200  
SCALE 1" = 100'

**DEVON ENERGY PRODUCTION COMPANY, L.P.**  
**THISTLE UNIT 254H**  
 LOCATED 248 FT. FROM THE SOUTH LINE  
 AND 1962 FT. FROM THE EAST LINE OF  
 SECTION 34, TOWNSHIP 23 SOUTH,  
 RANGE 33 EAST, N.M.P.M.  
 LEA COUNTY, STATE OF NEW MEXICO

DECEMBER 8, 2016

MADRON SURVEYING, INC. 301 SOUTH CANAL (575) 234-3341 CARLSBAD, NEW MEXICO  
 SURVEY NO. 5044D

SECTION 34, TOWNSHIP 23 SOUTH, RANGE 33 EAST, N.M.P.M.  
LEA COUNTY, STATE OF NEW MEXICO  
LOCATION VERIFICATION MAP



USGS QUAD MAP:  
TIP TOP WELLS

NOT TO SCALE

DEVON ENERGY PRODUCTION COMPANY, L.P.

**THISTLE UNIT 254H**

LOCATED 248 FT. FROM THE SOUTH LINE  
AND 1962 FT. FROM THE EAST LINE OF  
SECTION 34, TOWNSHIP 23 SOUTH,  
RANGE 33 EAST, N.M.P.M.  
LEA COUNTY, STATE OF NEW MEXICO

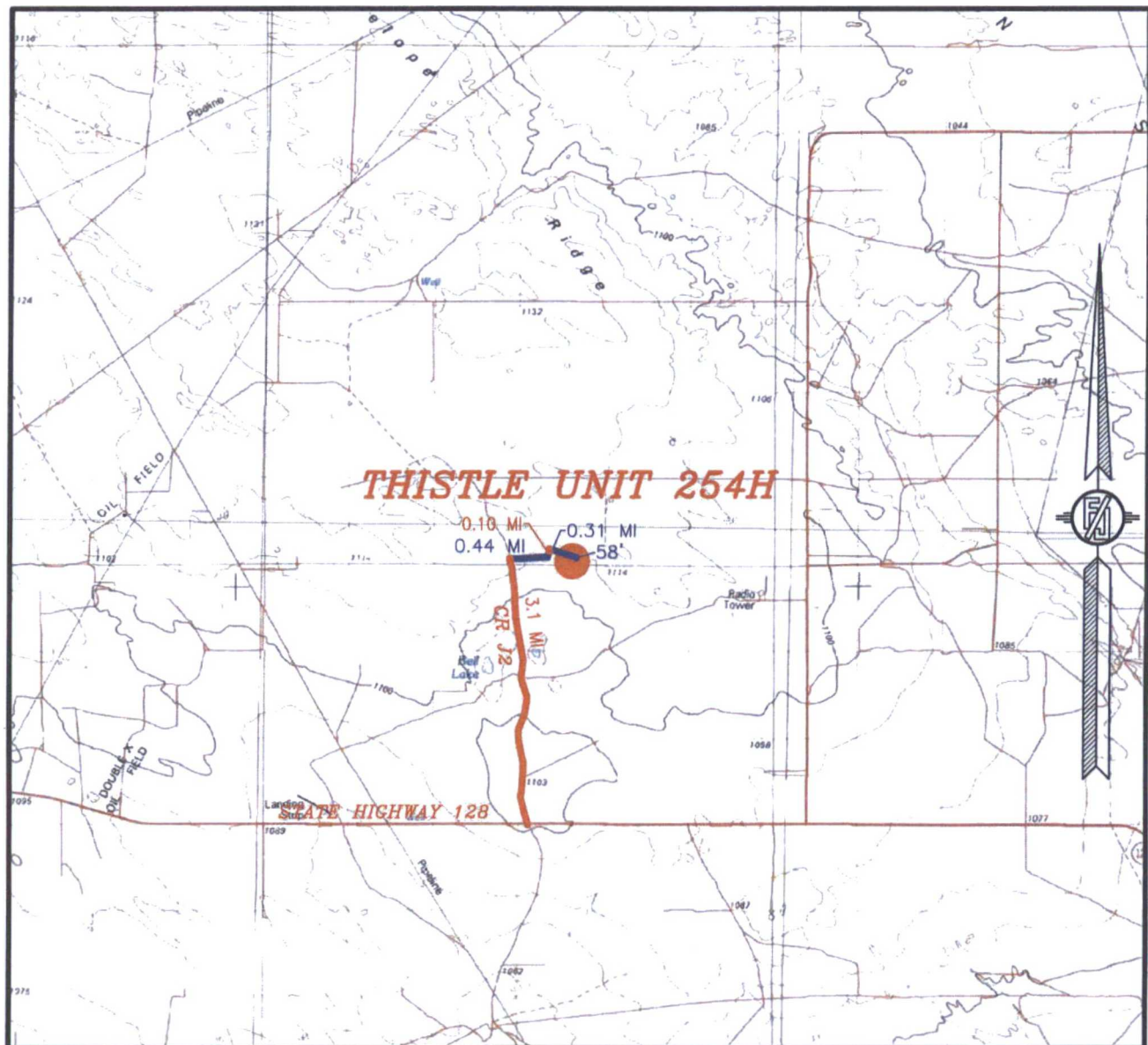
DECEMBER 8, 2016

SURVEY NO. 5044D

MADRON SURVEYING, INC. 301 SOUTH CANAL (575) 234-3341 CARLSBAD, NEW MEXICO



SECTION 34, TOWNSHIP 23 SOUTH, RANGE 33 EAST, N.M.P.M.  
LEA COUNTY, STATE OF NEW MEXICO  
VICINITY MAP



DISTANCES IN MILES

NOT TO SCALE

DEVON ENERGY PRODUCTION COMPANY, L.P.

**THISTLE UNIT 254H**

LOCATED 248 FT. FROM THE SOUTH LINE  
AND 1962 FT. FROM THE EAST LINE OF  
SECTION 34, TOWNSHIP 23 SOUTH,  
RANGE 33 EAST, N.M.P.M.  
LEA COUNTY, STATE OF NEW MEXICO

**DIRECTIONS TO LOCATION**

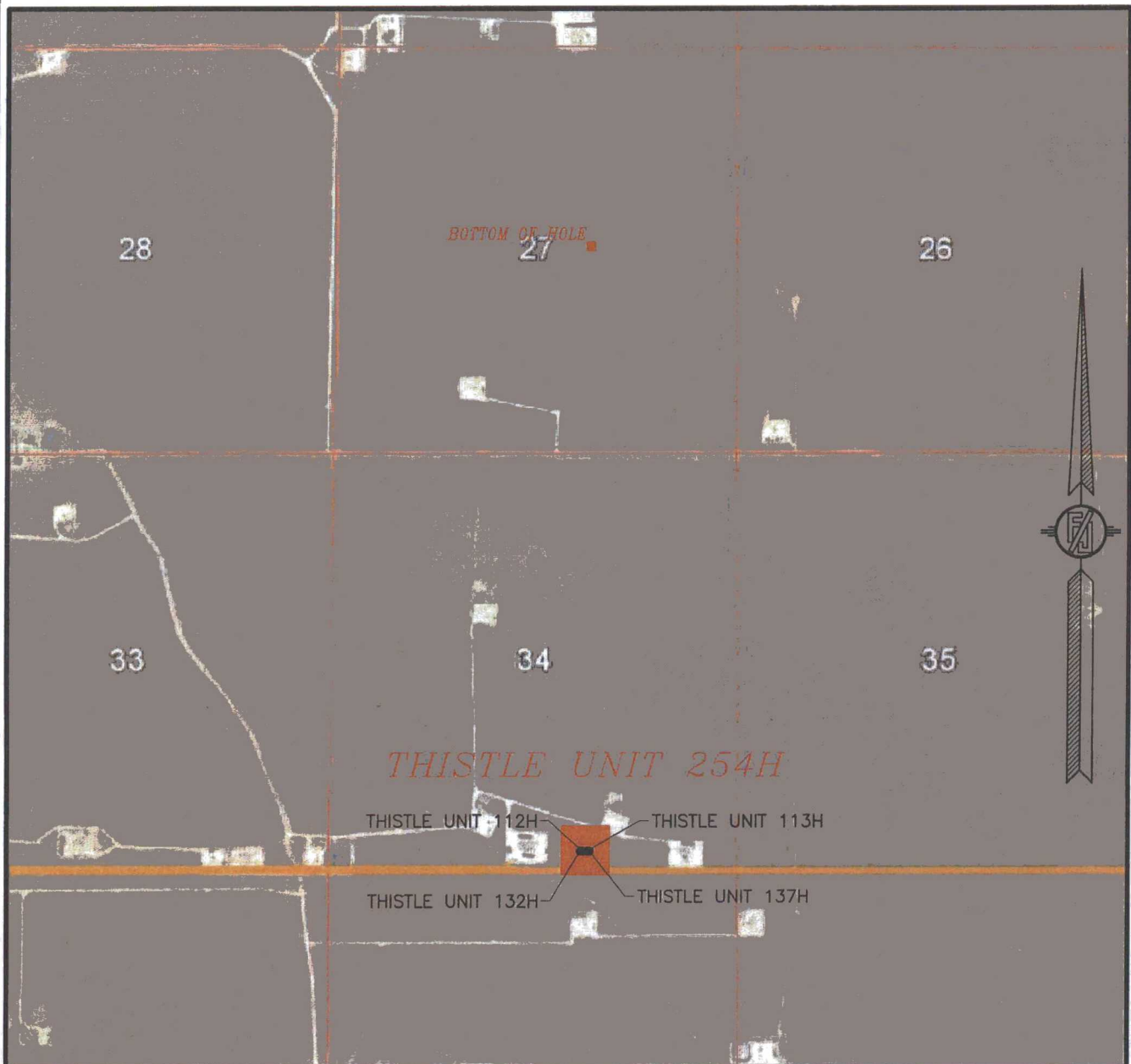
FROM STATE HIGHWAY 128 AND CR J2 (BRINSTOOL) GO NORTH ON CR J2 3.1 MILES, TURN RIGHT ON CALICHE ROAD AND GO EAST 0.44 OF A MILE, BEND LEFT AND GO NORTH 0.1 OF A MILE, BEND RIGHT AND GO SOUTHEAST 0.31 OF A MILE TO A PROPOSED ROAD SURVEY AND FOLLOW FLAGS SOUTH 58° TO THE NORTHEAST PAD CORNER FOR THIS LOCATION.

DECEMBER 8, 2016

SURVEY NO. 5044D

MADRON SURVEYING, INC. 301 SOUTH CANAL (575) 234-3341 CARLSBAD, NEW MEXICO

SECTION 34, TOWNSHIP 23 SOUTH, RANGE 33 EAST, N.M.P.M.  
LEA COUNTY, STATE OF NEW MEXICO  
**AERIAL PHOTO**



NOT TO SCALE  
AERIAL PHOTO:  
GOOGLE EARTH  
FEBRUARY 2014

DEVON ENERGY PRODUCTION COMPANY, L.P.  
**THISTLE UNIT 254H**

LOCATED 248 FT. FROM THE SOUTH LINE  
AND 1962 FT. FROM THE EAST LINE OF  
SECTION 34, TOWNSHIP 23 SOUTH,  
RANGE 33 EAST, N.M.P.M.  
LEA COUNTY, STATE OF NEW MEXICO

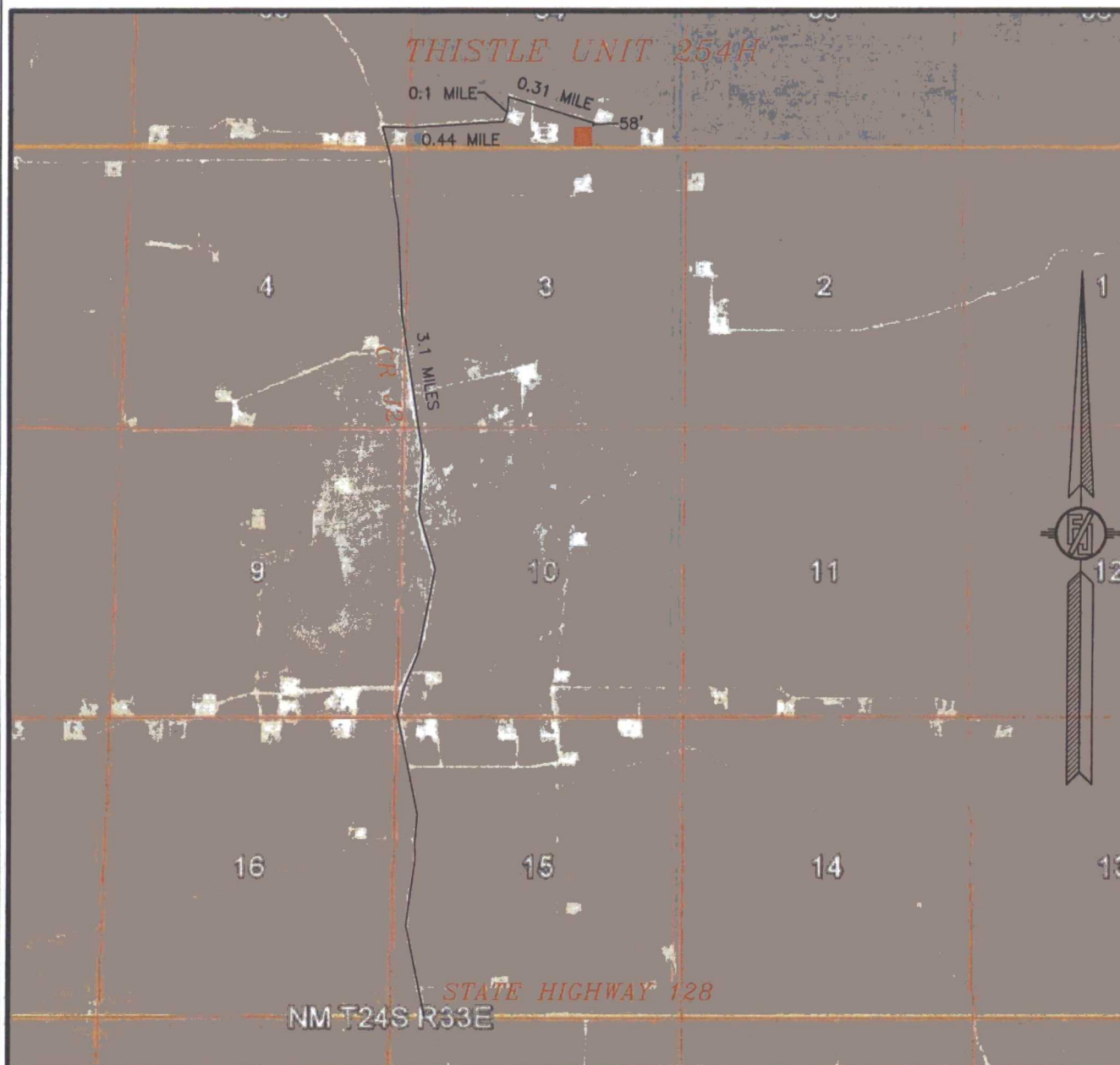
DECEMBER 8, 2016

SURVEY NO. 5044D

MADRON SURVEYING, INC. 301 SOUTH CANAL (575) 234-3341 CARLSBAD, NEW MEXICO



SECTION 34, TOWNSHIP 23 SOUTH, RANGE 33 EAST, N.M.P.M.  
LEA COUNTY, STATE OF NEW MEXICO  
ACCESS AERIAL ROUTE MAP



NOT TO SCALE  
AERIAL PHOTO:  
GOOGLE EARTH  
FEBRUARY 2014

DEVON ENERGY PRODUCTION COMPANY, L.P.  
**THISTLE UNIT 254H**

LOCATED 248 FT. FROM THE SOUTH LINE  
AND 1962 FT. FROM THE EAST LINE OF  
SECTION 34, TOWNSHIP 23 SOUTH,  
RANGE 33 EAST, N.M.P.M.  
LEA COUNTY, STATE OF NEW MEXICO

DECEMBER 8, 2016

SURVEY NO. 5044D

MADRON SURVEYING, INC. 301 SOUTH CANAL (575) 234-3341 CARLSBAD, NEW MEXICO