

District I
1625 N French Dr., Hobbs, NM 88240
Phone: (575) 393-6101 Fax: (575) 393-0720
District II
811 S First St., Artesia, NM 88210
Phone: (575) 748-1253 Fax: (575) 748-9720
District III
1000 Rio Brazos Road, Aztec, NM 87410
Phone: (505) 334-6178 Fax: (505) 334-6170
District IV
1220 S St Francis Dr., Santa Fe, NM 87505
Phone: (505) 476-3460 Fax: (505) 476-3462

State of New Mexico
Energy, Minerals & Natural Resources Department
OIL CONSERVATION DIVISION
1220 South St. Francis Dr.
Santa Fe, NM 87505
HOBBS OCD

Form C-102
Revised August 1, 2011
Submit one copy to appropriate
District Office

☐ AMENDED REPORT

FEB 16 2017

WELL LOCATION AND ACREAGE DECLARATION

| | | | | | |
|-------------------------------------|--|---|--|---|--|
| 1 API Number 30-025-43608 | | 2 Pool Code 97397 | | 3 Pool Name GRAMA RIDGE WOLF CAMP, WEST | |
| 4 Property Code 316265 | | 5 Property Name GRAMA RIDGE STATE 8 | | 6 Well Number 3H | |
| 7 OGRID No. 571127 | | 8 Operator Name BLACK MOUNTAIN OPERATING, LLC | | 9 Elevation 3548' | |

10 Surface Location

| UL or lot no. | Section | Township | Range | Lot Idn | Feet from the | North/South line | Feet from the | East/West line | County |
|---------------|---------|----------|-------------------|---------|---------------|------------------|---------------|----------------|--------|
| P | 8 | 22 SOUTH | 34 EAST, N.M.P.M. | | 150' | SOUTH | 695' | EAST | LEA |

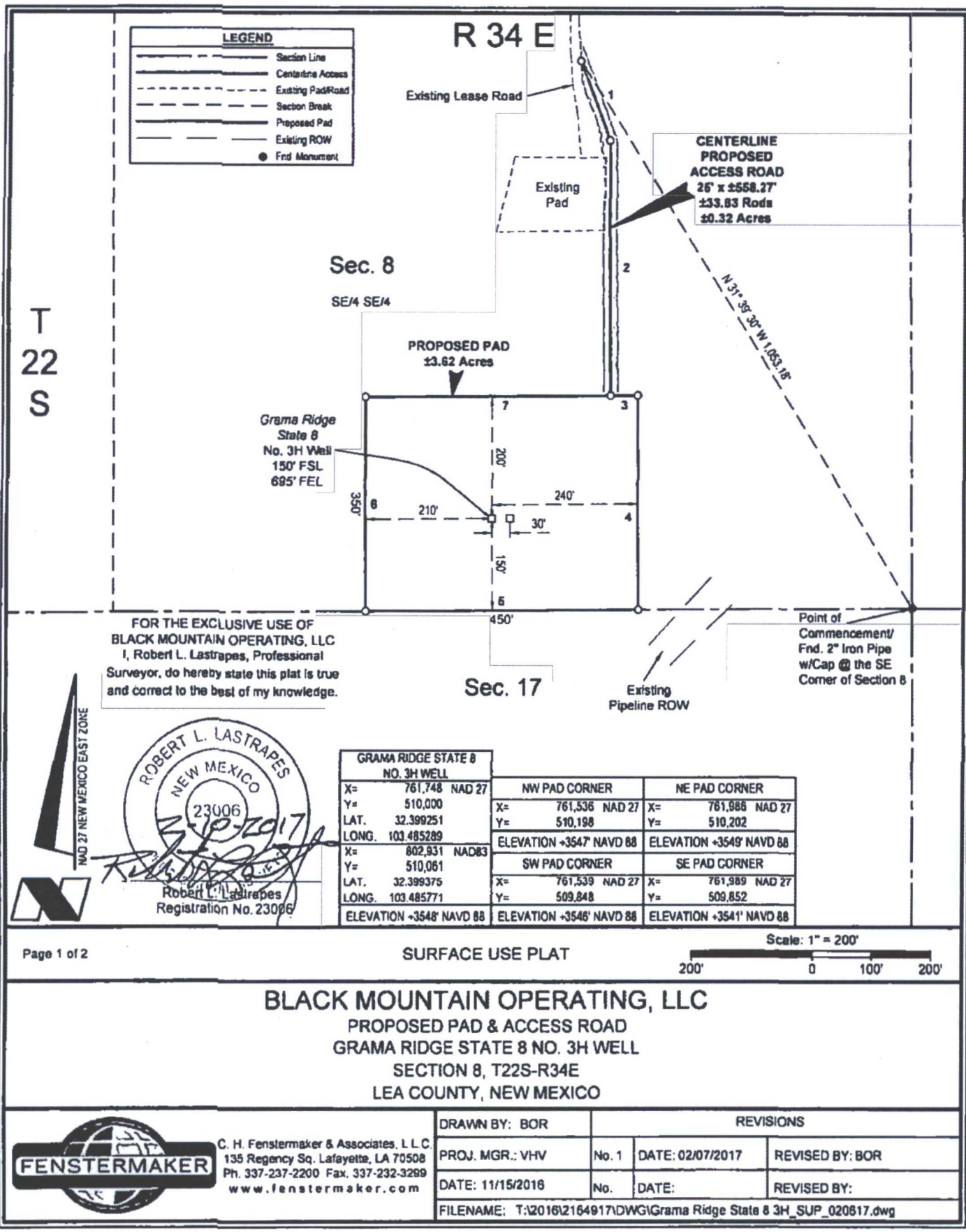
11 Bottom Hole Location If Different From Surface

| UL or lot no. | Section | Township | Range | Lot Idn | Feet from the | North/South line | Feet from the | East/West line | County |
|---------------|---------|----------|-------------------|---------|---------------|------------------|---------------|----------------|--------|
| A | 8 | 22 SOUTH | 34 EAST, N.M.P.M. | | 330' | NORTH | 995' | EAST | LEA |

| 12 Dedicated Acres | 13 Joint or Infill | 14 Consolidation Code | 15 Order No. |
|--------------------|--------------------|-----------------------|--------------|
| 160 | | | |

No allowable will be assigned to this completion until all interests have been consolidated or a non-standard unit has been approved by the division.

| | | | | |
|--|--|--|---|--|
| <p>PROPOSED BOTTOM HOLE LOCATION</p> <p>X= 761.417 NAD 27 Y= 514.797 LAT. 32.412443 LONG. 103.486237</p> <p>X= 802.500 NAD83 Y= 514.858 LAT. 32.412587 LONG. 103.486719</p> | <p>GRAMA RIDGE STATE 8 3H WELL</p> <p>X= 761.748 NAD 27 Y= 510.000 LAT. 32.399251 LONG. 103.485289</p> <p>X= 802.531 NAD83 Y= 510.061 LAT. 32.399375 LONG. 103.485771</p> <p>ELEVATION -3548' NAVD 88</p> | <p>CORNER COORDINATES TABLE (NAD 27)</p> <p>A - Y=515115.64, X=758778.87 B - Y=515133.79, X=762410.14 C - Y=509838.87, X=759808.89 D - Y=509854.60, X=762443.72</p> | <p>Proposed Producing Interval</p> <p>Proposed Penetration Point 330' FSL, 995' FEL</p> <p>N 59°25'10" W 349.79'</p> <p>N 00°21'52" W 4,619.21'</p> | <p>17 OPERATOR CERTIFICATION</p> <p>I hereby certify that the information contained herein is true and complete to the best of my knowledge and belief, and that this organization either owns a working interest or mineral interest in the land including the proposed bottom hole location or has a right to drill this well as this location pursuant to a contract with an owner of such a mineral or working interest, or to a voluntary pooling agreement or a compulsory pooling order heretofore entered by the division.</p> <p><i>Denise L. White</i> 2-13-17 Signature Date</p> <p>Denise L. White Printed Name</p> <p><i>denise.white@blackmtn.com</i> E-mail Address</p> <p>18 SURVEYOR CERTIFICATION</p> <p>I hereby certify that the well location shown on this plat was plotted from field notes of actual surveys made by me or under my supervision, and that the same is true and correct to the best of my belief.</p> <p>01-25-2017 Date of Survey</p> <p><i>Robert L. Lastrapes</i> Signature and Seal of Professional Surveyor</p> <p>23006 2-10-2017 Certificate Number</p> |
|--|--|--|---|--|



BLACK MOUNTAIN OPERATING, LLC
PROPOSED PAD & ACCESS ROAD
GRAMA RIDGE STATE 8 NO. 3H WELL
SECTION 8, T22S-R34E
LEA COUNTY, NEW MEXICO



C. H. Fenstermaker & Associates, L.L.C.
135 Regency Sq. Lafayette, LA 70508
Ph. 337-237-2200 Fax. 337-232-3269
www.fenstermaker.com

| DRAWN BY: BOR | | REVISIONS | |
|---|-------|------------------|-----------------|
| PROJ. MGR.: VHV | No. 1 | DATE: 02/07/2017 | REVISED BY: BOR |
| DATE: 11/15/2016 | No. | DATE: | REVISED BY: |
| FILENAME: T:\2016\2164917\DWG\Grama Ridge State 8 3H_SUP_020817.dwg | | | |

NOTE:

Please be advised, that while reasonable efforts are made to locate and verify pipelines and anomalies using our standard pipeline locating equipment, it is impossible to be 100 % effective. As such, we advise using caution when performing work as there is a possibility that pipelines and other hazards, such as fiber optic cables, PVC pipelines, etc. may exist undetected on site.

NOTE:

Many states maintain information centers that establish links between those who dig (excavators) and those who own and operate underground facilities (operators). It is advisable and in most states, law, for the contractor to contact the center for assistance in locating and marking underground utilities. For guidance: New Mexico One Call - www.nmonocall.org

DISCLAIMER: At this time, C. H. Fenstermaker & Associates, L.L.C. has not performed nor was asked to perform any type of engineering, hydrological modeling, flood plain, or "No Rise" certification analyses, including but not limited to determining whether the project will impact flood hazards in connection with federal/FEMA, state, and/or local laws, ordinances and regulations. Accordingly, Fenstermaker makes no warranty or representation of any kind as to the foregoing issues, and persons or entities using this information shall do so at their own risk.

| CENTERLINE PROPOSED ACCESS ROAD | | |
|---------------------------------|-----------------|----------|
| COURSE | BEARING | DISTANCE |
| 1 | S 19° 47' 18" E | 142.25' |
| 2 | S 00° 23' 24" E | 416.02' |

| PROPOSED PAD | | |
|--------------|-----------------|----------|
| COURSE | BEARING | DISTANCE |
| 3 | N 89° 36' 36" E | 44.47' |
| 4 | S 00° 23' 24" E | 350.00' |
| 5 | S 89° 36' 36" W | 450.00' |
| 6 | N 00° 23' 24" W | 350.00' |
| 7 | N 89° 36' 36" E | 405.53' |

FOR THE EXCLUSIVE USE OF
BLACK MOUNTAIN OPERATING, LLC
I, Robert L. Lastrapes, Professional
Surveyor, do hereby state this plat is true
and correct to the best of my knowledge.



Page 2 of 2

SURFACE USE PLAT**BLACK MOUNTAIN OPERATING, LLC**

PROPOSED PAD & ACCESS ROAD
GRAMA RIDGE STATE 8 NO. 3H WELL
SECTION 8, T22S-R34E
LEA COUNTY, NEW MEXICO



C. H. Fenstermaker & Associates, L.L.C.
135 Regency Sq. Lafayette, LA 70508
Ph. 337-237-2200 Fax. 337-232-3299
www.fenstermaker.com

| DRAWN BY: BOR | | REVISIONS | |
|---|-------|------------------|-----------------|
| PROJ. MGR.: VHV | No. 1 | DATE: 02/07/2017 | REVISED BY: BOR |
| DATE: 11/15/2016 | No. | DATE: | REVISED BY: |
| FILENAME: T:\2018\2164917\DWG\Grama Ridge State 8 3H_SUP_020617.dwg | | | |