

District I
1625 N. French Dr., Hobbs, NM 88240
Phone: (575) 393-6161 Fax: (575) 393-0720
District II
811 S. First St., Artesia, NM 88210
Phone: (575) 748-1283 Fax: (575) 748-9720
District III
1000 Rio Brazos Road, Aztec, NM 87410
Phone: (505) 334-6178 Fax: (505) 334-6170
District IV
1220 S. St. Francis Dr., Santa Fe, NM 87505
Phone: (505) 476-3460 Fax: (505) 476-3462

State of New Mexico
Energy, Minerals & Natural Resources
Department
OIL CONSERVATION DIVISION
1220 South St. Francis Dr.
Santa Fe, NM 87505

FORM C-102

Revised August 1, 2011

Submit one copy to appropriate

District Office

☐ AMENDED REPORT

WELL LOCATION AND ACREAGE DEDICATION PLAT

| | | |
|---|---|--|
| ¹ API Number 30-025- 43646 | ² Pool Code 98097 | ³ Pool Name WC-025 G-09 S253336D; Upper Wolfcamp |
| ⁴ Property Code 317458 | ⁵ Property Name CALM BREEZE 2 FED COM | ⁶ Well Number #702H |
| ⁷ GRID No. 7377 | ⁸ Operator Name EOG RESOURCES, INC. | ⁹ Elevation 3325' |

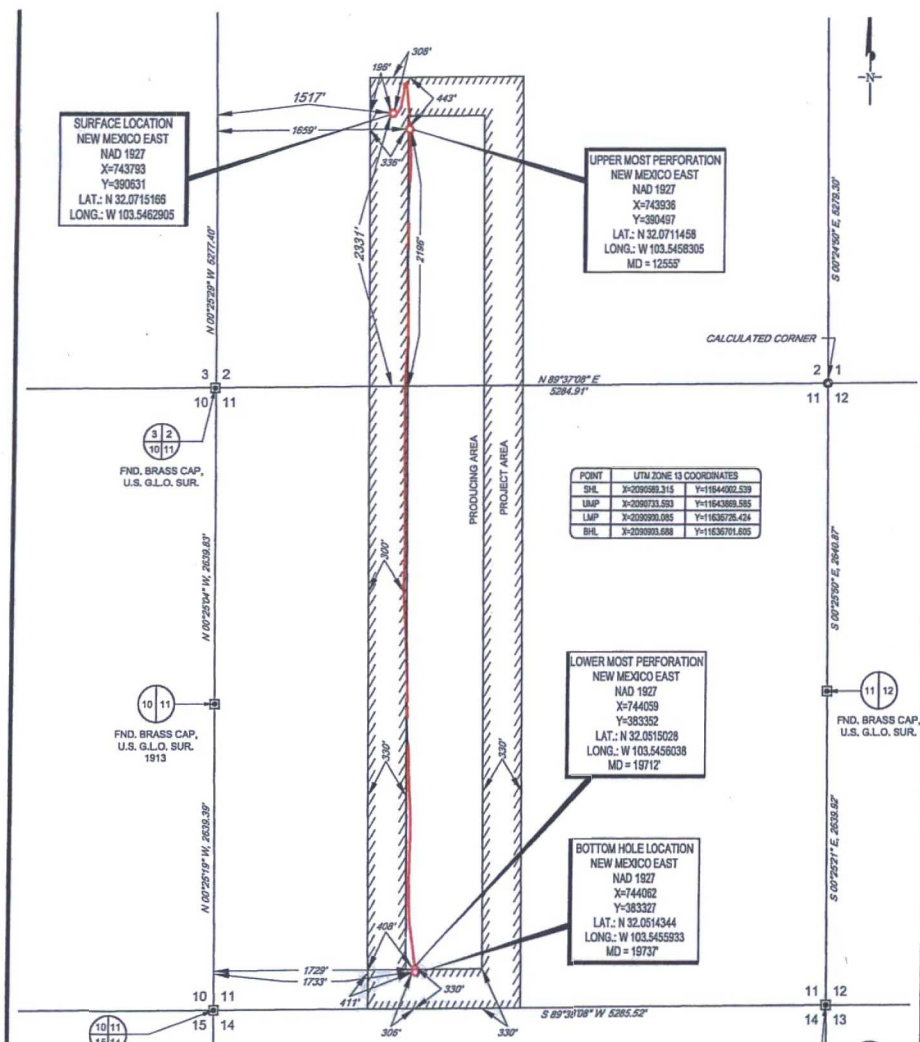
¹⁰Surface Location

| | | | | | | | | | |
|---------------------------|---------------------|-------------------------|----------------------|---------------------|-------------------------------|----------------------------------|-------------------------------|-------------------------------|----------------------|
| UL or lot no. K | Section 2 | Township 26-S | Range 33-E | Lot Idn - | Feet from the 2331' | North/South line SOUTH | Feet from the 1517' | East/West line WEST | County LEA |
|---------------------------|---------------------|-------------------------|----------------------|---------------------|-------------------------------|----------------------------------|-------------------------------|-------------------------------|----------------------|

| | | | | | | | | | |
|---------------------------|----------------------|-------------------------|----------------------|---------------------|-----------------------------|----------------------------------|------------------------------|-------------------------------|----------------------|
| UL or lot no. N | Section 11 | Township 26-S | Range 33-E | Lot Idn - | Feet from the 306 | North/South line SOUTH | Feet from the 1733 | East/West line WEST | County LEA |
|---------------------------|----------------------|-------------------------|----------------------|---------------------|-----------------------------|----------------------------------|------------------------------|-------------------------------|----------------------|

| | | | |
|--|-------------------------------|----------------------------------|-------------------------|
| ¹² Dedicated Acres 240.00 | ¹³ Joint or Infill | ¹⁴ Consolidation Code | ¹⁵ Order No. |
|--|-------------------------------|----------------------------------|-------------------------|

No allowable will be assigned to this completion until all interests have been consolidated or a non-standard unit has been approved by the division.



17 OPERATOR CERTIFICATION
I hereby certify that the information contained herein is true and complete to the best of my knowledge and belief, and that this organization either owns a working interest or unleased mineral interest in the land including the proposed bottom hole location or has a right to drill this well at this location pursuant to a contract with an owner of such a mineral or working interest, or to a voluntary pooling agreement or a compulsory pooling order heretofore entered by the division.

Signature: **Kay Maddox** Date: **10/23/17**
Printed Name: **KAY MADDOX**
E-mail Address: **Kay.Maddox@eogresources.com**

18 SURVEYOR CERTIFICATION
I hereby certify that the well location shown on this plat was plotted from field notes of actual surveys made by me or under my supervision, and that the same is true to the best of my belief.

Date of Survey: **7/19/2018**
Signature and Seal of Professional Surveyor: **NEW MEXICO PROFESSIONAL SURVEYOR 18329**
Certificate Number: **18329**

FILE: CALMBREEZE2FEDCOM_702H.DWG 7/27/2016 4:50:31 PM tstewart

SCALE: 1" = 1000'
0' 500' 1000'

SECTIONS 2 & 11, TOWNSHIP 26-S, RANGE 33-E, N.M.P.M.
LEA COUNTY, NEW MEXICO

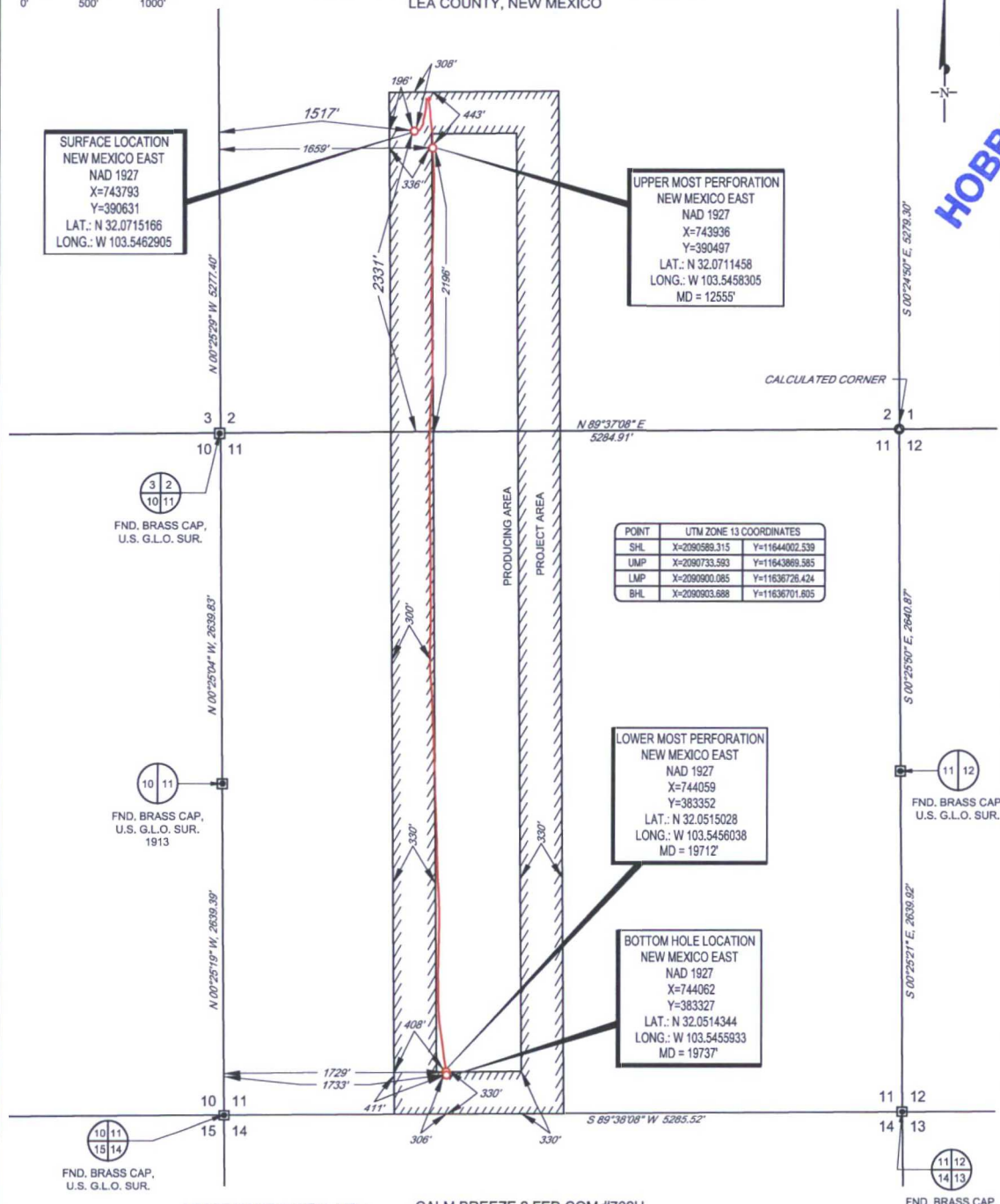
SURFACE LOCATION
NEW MEXICO EAST
NAD 1927
X=743793
Y=390631
LAT.: N 32.0715166
LONG.: W 103.5462905

UPPER MOST PERFORATION
NEW MEXICO EAST
NAD 1927
X=743936
Y=390497
LAT.: N 32.0711458
LONG.: W 103.5458305
MD = 12555'

| POINT | UTM ZONE 13 COORDINATES |
|-------|------------------------------|
| SHL | X=2090589.315 Y=11644002.539 |
| UMP | X=2090733.593 Y=11643869.585 |
| LMP | X=2090900.085 Y=11636726.424 |
| BHL | X=2090903.688 Y=11636701.805 |

LOWER MOST PERFORATION
NEW MEXICO EAST
NAD 1927
X=744059
Y=383352
LAT.: N 32.0515028
LONG.: W 103.5456038
MD = 19712'

BOTTOM HOLE LOCATION
NEW MEXICO EAST
NAD 1927
X=744062
Y=383327
LAT.: N 32.0514344
LONG.: W 103.5455933
MD = 19737'



LEASE NAME & WELL NO.: CALM BREEZE 2 FED COM #702H
SECTION 2 TWP 26-S RGE 33-E SURVEY N.M.P.M.
COUNTY LEA STATE NM ELEVATION 3325'
DESCRIPTION 2331' FSL & 1517' FWL



1400 EVERMAN PARKWAY, Ste. 197 • FT. WORTH, TEXAS 76140
TELEPHONE: (817) 744-7512 • FAX (817) 744-7548
2903 NORTH BIG SPRING • MIDLAND, TEXAS 79705
TELEPHONE: (432) 682-1653 OR (800) 767-1653 • FAX (432) 682-1743
WWW.TOPOGRAPHIC.COM



Michael Blake Brown, P.S. No. 18329
OCTOBER 30, 2017

| | |
|--|-----------|
| CALM BREEZE 2 FED COM #702H AS-COMPLETED | REVISION: |
| | |
| | |
| | |
| | |
| DATE: 10/30/17 | |
| FILE: AD_CALMBREEZE_2_FED_COM_702H | |
| DRAWN BY: AMD | |
| SHEET: 1 OF 1 | |

NOTES:
1. ORIGINAL DOCUMENT SIZE: 8.5" X 14"
2. ALL BEARINGS, DISTANCES, AND COORDINATE VALUES CONTAINED HEREIN ARE GRID BASED UPON THE NEW MEXICO STATE PLANE COORDINATE SYSTEM, EAST ZONE, U.S. SURVEY FEET, NORTH AMERICAN DATUM 1927.
3. THIS WELL LOCATION SHOWN HEREON HAS BEEN SURVEYED ON THE GROUND UNDER MY SUPERVISION AND PREPARED ACCORDING TO THE EVIDENCE FOUND AT THE TIME OF SURVEY, AND DATA PROVIDED BY EOG RESOURCES, INC. THIS CERTIFICATION IS MADE AND LIMITED TO THOSE PERSONS OR ENTITIES SHOWN ON THE FACE OF THIS PLAT AND IS NON-TRANSFERABLE. THIS SURVEY IS CERTIFIED FOR THIS TRANSACTION ONLY.

HOBBS OCD
NOV 02 2017
RECEIVED