

District I
1625 N. French Dr., Hobbs, NM 88240
Phone: (575) 393-6161 Fax: (575) 393-0720
District II
811 S. First St., Artesia, NM 88210
Phone: (575) 748-1283 Fax: (575) 748-9720
District III
1000 Rio Brazos Road, Aztec, NM 87410
Phone: (505) 334-6178 Fax: (505) 334-6170
District IV
1220 S. St. Francis Dr., Santa Fe, NM 87505
Phone: (505) 476-3460 Fax: (505) 476-3462

State of New Mexico
Energy, Minerals & Natural Resources
Department
OIL CONSERVATION DIVISION
1220 South St. Francis Dr.
Santa Fe, NM 87505

FORM C-102

Revised August 1, 2011

Submit one copy to appropriate

District Office

AMENDED REPORT

HOBE

OCT 31 2017

RECEIVED

WELL LOCATION AND ACREAGE DEDICATION PLAT

¹ API Number 30-025-43899	² Pool Code 98105	³ Pool Name WC-025 G-09 S263416B; Upper Wolfcamp
⁴ Property Code 40383	⁵ Property Name NAUTILUS 16 STATE COM	⁶ Well Number #711H
⁷ GRID No. 7377	⁸ Operator Name EOG RESOURCES, INC.	⁹ Elevation 3330'

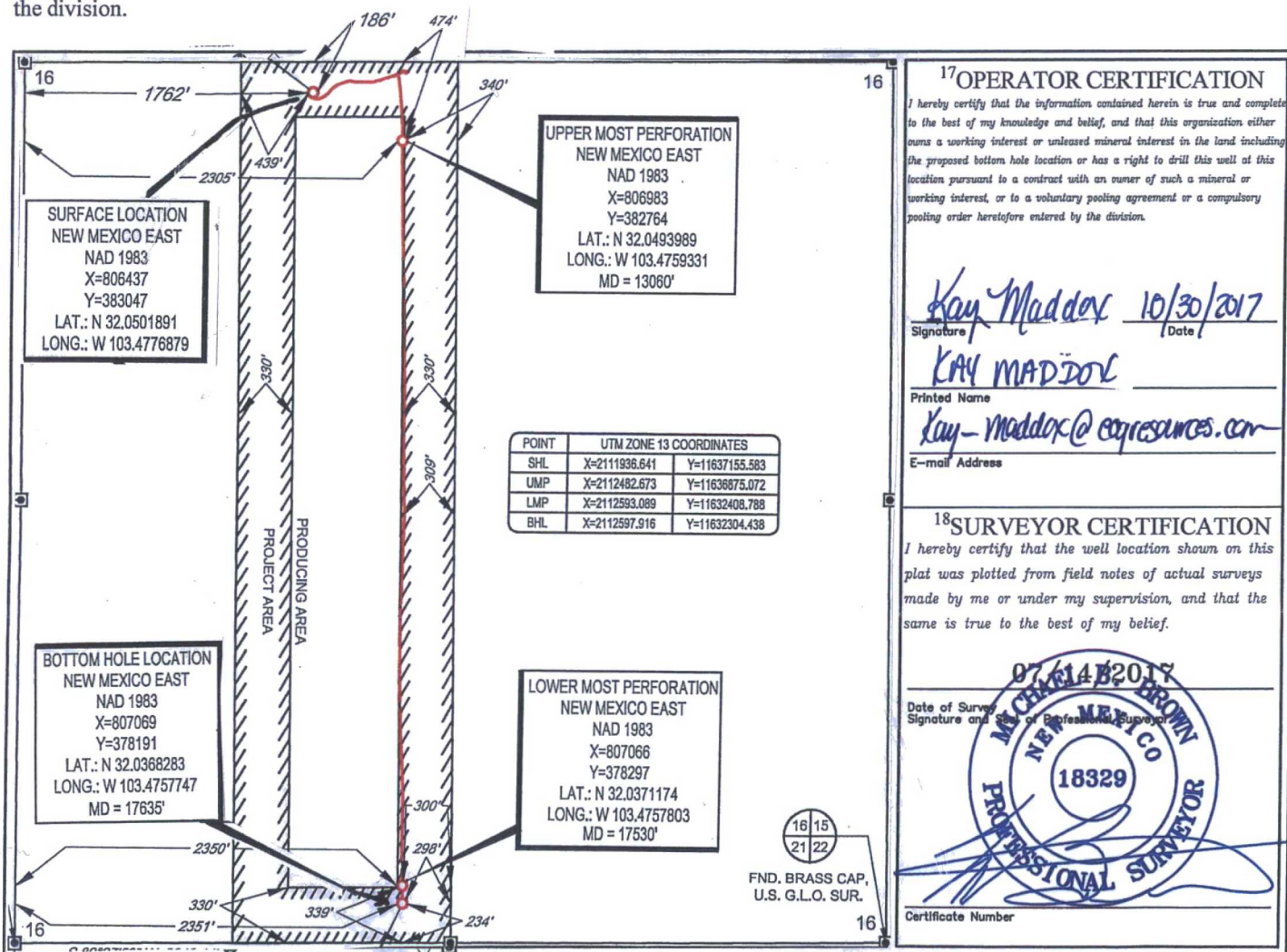
¹⁰Surface Location

UL or lot no. C	Section 16	Township 26-S	Range 34-E	Lot Idn -	Feet from the 186'	North/South line NORTH	Feet from the 1762'	East/West line WEST	County LEA
--------------------	---------------	------------------	---------------	--------------	-----------------------	---------------------------	------------------------	------------------------	---------------

UL or lot no. N	Section 16	Township 26-S	Range 34-E	Lot Idn -	Feet from the 234'	North/South line SOUTH	Feet from the 2351'	East/West line WEST	County LEA
--------------------	---------------	------------------	---------------	--------------	-----------------------	---------------------------	------------------------	------------------------	---------------

¹² Dedicated Acres 160.00	¹³ Joint or Infill	¹⁴ Consolidation Code	¹⁵ Order No.
---	-------------------------------	----------------------------------	-------------------------

No allowable will be assigned to this completion until all interests have been consolidated or a non-standard unit has been approved by the division.



¹⁷OPERATOR CERTIFICATION

I hereby certify that the information contained herein is true and complete to the best of my knowledge and belief, and that this organization either owns a working interest or unless mineral interest in the land including the proposed bottom hole location or has a right to drill this well at this location pursuant to a contract with an owner of such a mineral or working interest, or to a voluntary pooling agreement or a compulsory pooling order heretofore entered by the division.

Kay Maddox 10/30/2017
Signature Date

KAY MADDOX
Printed Name

Kay-maddox@egresources.com
E-mail Address

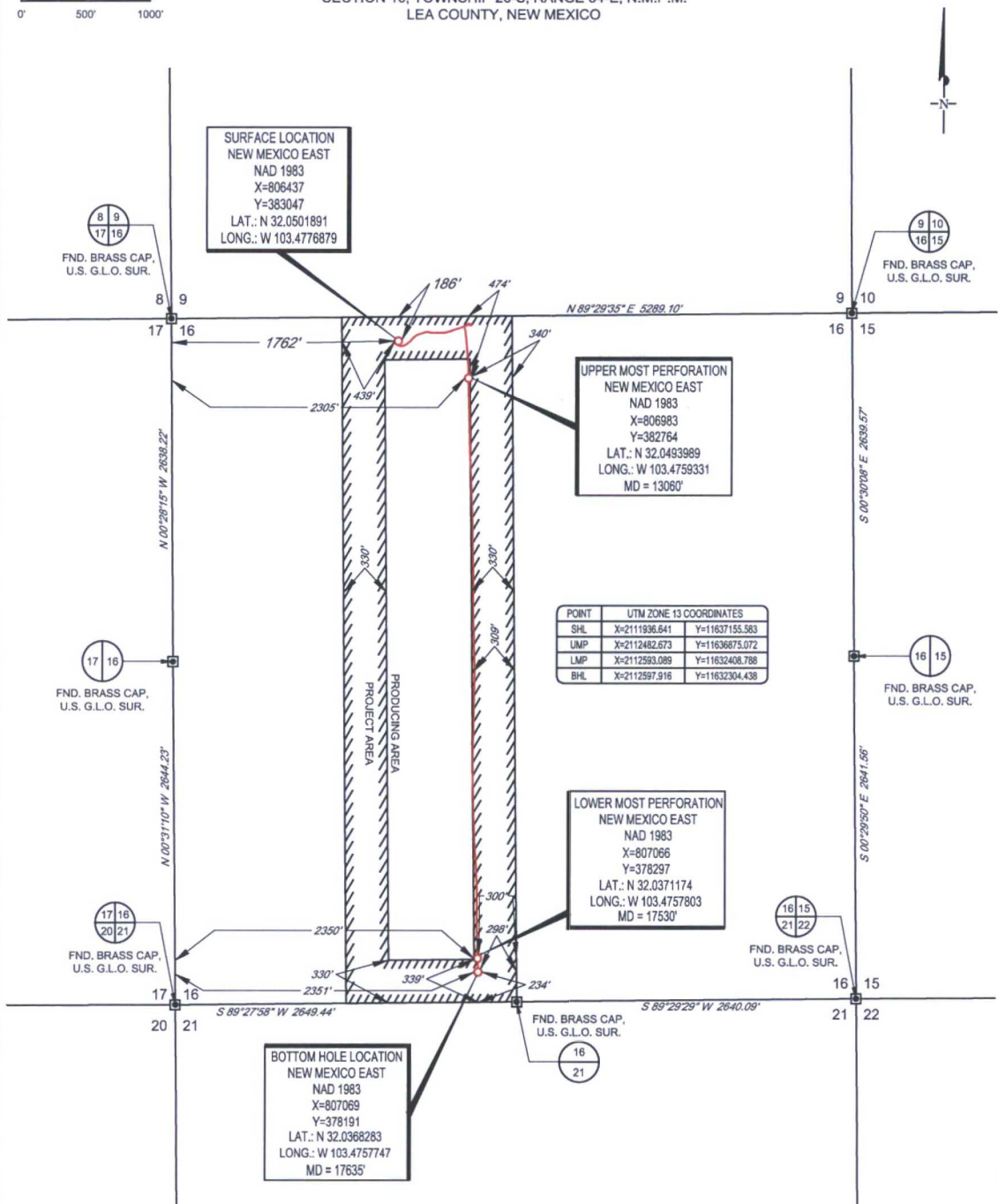
¹⁸SURVEYOR CERTIFICATION

I hereby certify that the well location shown on this plat was plotted from field notes of actual surveys made by me or under my supervision, and that the same is true to the best of my belief.

07/14/2017
Date of Survey
Signature and Seal of Professional Surveyor
MICHAEL BROWN
NEW MEXICO
18329
PROFESSIONAL SURVEYOR
Certificate Number

SCALE: 1" = 1000'
0' 500' 1000'

SECTION 16, TOWNSHIP 26-S, RANGE 34-E, N.M.P.M.
LEA COUNTY, NEW MEXICO



LEASE NAME & WELL NO.: NAUTILUS 16 STATE COM #711H
SECTION 16 TWP. 26-S RGE. 34-E SURVEY N.M.P.M.
COUNTY LEA STATE NM ELEVATION 3330'
DESCRIPTION 186' FNL & 1762' FWL



TOPOGRAPHIC
LOYALTY INNOVATION LEGACY

1400 EVERMAN PARKWAY, Ste. 197 • FT. WORTH, TEXAS 76140
TELEPHONE: (817) 744-7512 • FAX (817) 744-7549
2903 NORTH BIG SPRING • MIDLAND, TEXAS 79705
TELEPHONE: (432) 682-1653 OR (800) 767-1653 • FAX (432) 682-1743
WWW.TOPOGRAPHIC.COM

eoq resources, Inc.



Michael Blake Brown, P.S. No. 18329
OCTOBER 20, 2017

NAUTILUS 16 STATE COM #711H AS-COMPLETED	REVISION:
DATE: 10/20/17	
FILE: AD_NAUTILUS16STATECOM_711H	
DRAWN BY: AMD	
SHEET: 1 OF 1	

NOTES:
1. ORIGINAL DOCUMENT SIZE: 8.5" X 14"
2. ALL BEARINGS, DISTANCES, AND COORDINATE VALUES CONTAINED HEREIN ARE GRID BASED UPON THE NEW MEXICO STATE PLANE COORDINATE SYSTEM, EAST ZONE, U.S. SURVEY FEET, NORTH AMERICAN DATUM 1983.
3. THIS WELL LOCATION SHOWN HEREON HAS BEEN SURVEYED ON THE GROUND UNDER MY SUPERVISION AND PREPARED ACCORDING TO THE EVIDENCE FOUND AT THE TIME OF SURVEY, AND DATA PROVIDED BY EOG RESOURCES, INC. THIS CERTIFICATION IS MADE AND LIMITED TO THOSE PERSONS OR ENTITIES SHOWN ON THE FACE OF THIS PLAT AND IS NON-TRANSFERABLE. THIS SURVEY IS CERTIFIED FOR THIS TRANSACTION ONLY.