

District I
1625 N. French Dr., Hobbs, NM 88240
Phone: (575) 393-6161 Fax: (575) 393-0720
District II
811 S. First St., Artesia, NM 88210
Phone: (575) 748-1283 Fax: (575) 748-9720
District III
1000 Rio Brazos Road, Aztec, NM 87410
Phone: (505) 334-6178 Fax: (505) 334-6170
District IV
1220 S. St. Francis Dr., Santa Fe, NM 87505
Phone: (505) 476-3460 Fax: (505) 476-3462

State of New Mexico
Energy, Minerals & Natural Resources
Department
OIL CONSERVATION DIVISION
1220 South St. Francis Dr.
Santa Fe, NM 87505

HOBBS OGD
OCT 31 2017
RECEIVED

FORM C-102
Revised August 1, 2011
Submit one copy to appropriate
District Office
☐ AMENDED REPORT

WELL LOCATION AND ACREAGE DEDICATION PLAT

| | | |
|-------------------------------------------------|-----------------------------------------------------|-----------------------------------------------------------------|
| ¹ API Number 30-025- 43899 | ² Pool Code 98105 | ³ Pool Name WC-025 G-09 S2633416B; Upper Wolfcamp |
| ⁴ Property Code 40383 | ⁵ Property Name NAUTILUS 16 STATE COM | ⁶ Well Number #710H |
| ⁷ GRID No. 7377 | ⁸ Operator Name EOG RESOURCES, INC. | ⁹ Elevation 3330' |

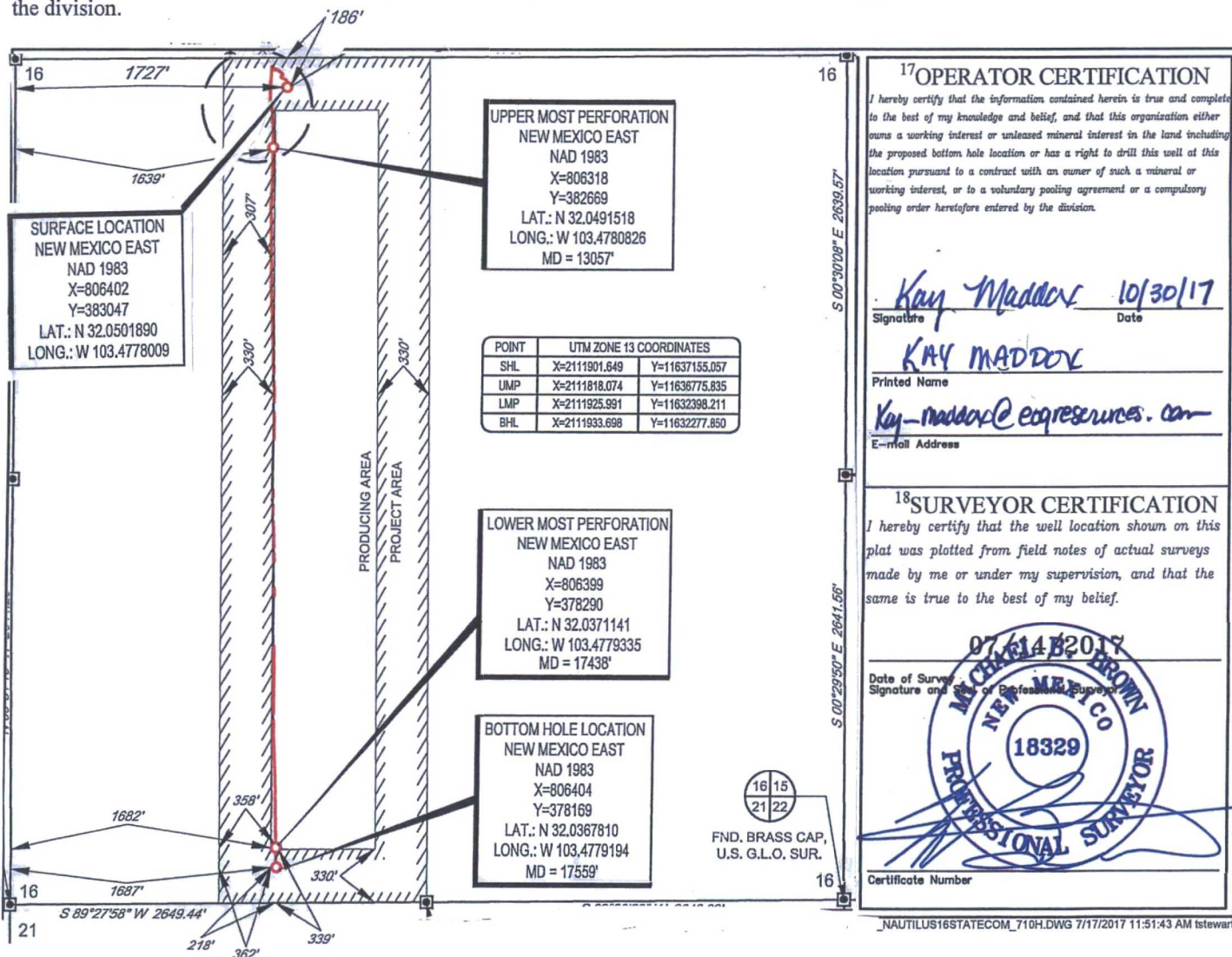
¹⁰Surface Location

| | | | | | | | | | |
|--------------------|---------------|------------------|---------------|--------------|-----------------------|---------------------------|------------------------|------------------------|---------------|
| UL or lot no. C | Section 16 | Township 26-S | Range 34-E | Lot Idn - | Feet from the 186' | North/South line NORTH | Feet from the 1727' | East/West line WEST | County LEA |
|--------------------|---------------|------------------|---------------|--------------|-----------------------|---------------------------|------------------------|------------------------|---------------|

| | | | | | | | | | |
|--------------------|---------------|------------------|---------------|--------------|-----------------------|---------------------------|------------------------|------------------------|---------------|
| UL or lot no. N | Section 16 | Township 26-S | Range 34-E | Lot Idn - | Feet from the 218' | North/South line SOUTH | Feet from the 1487' | East/West line WEST | County LEA |
|--------------------|---------------|------------------|---------------|--------------|-----------------------|---------------------------|------------------------|------------------------|---------------|

| | | | |
|-----------------------------------------|-------------------------------|----------------------------------|-------------------------|
| ¹² Dedicated Acres 160.00 | ¹³ Joint or Infill | ¹⁴ Consolidation Code | ¹⁵ Order No. |
|-----------------------------------------|-------------------------------|----------------------------------|-------------------------|

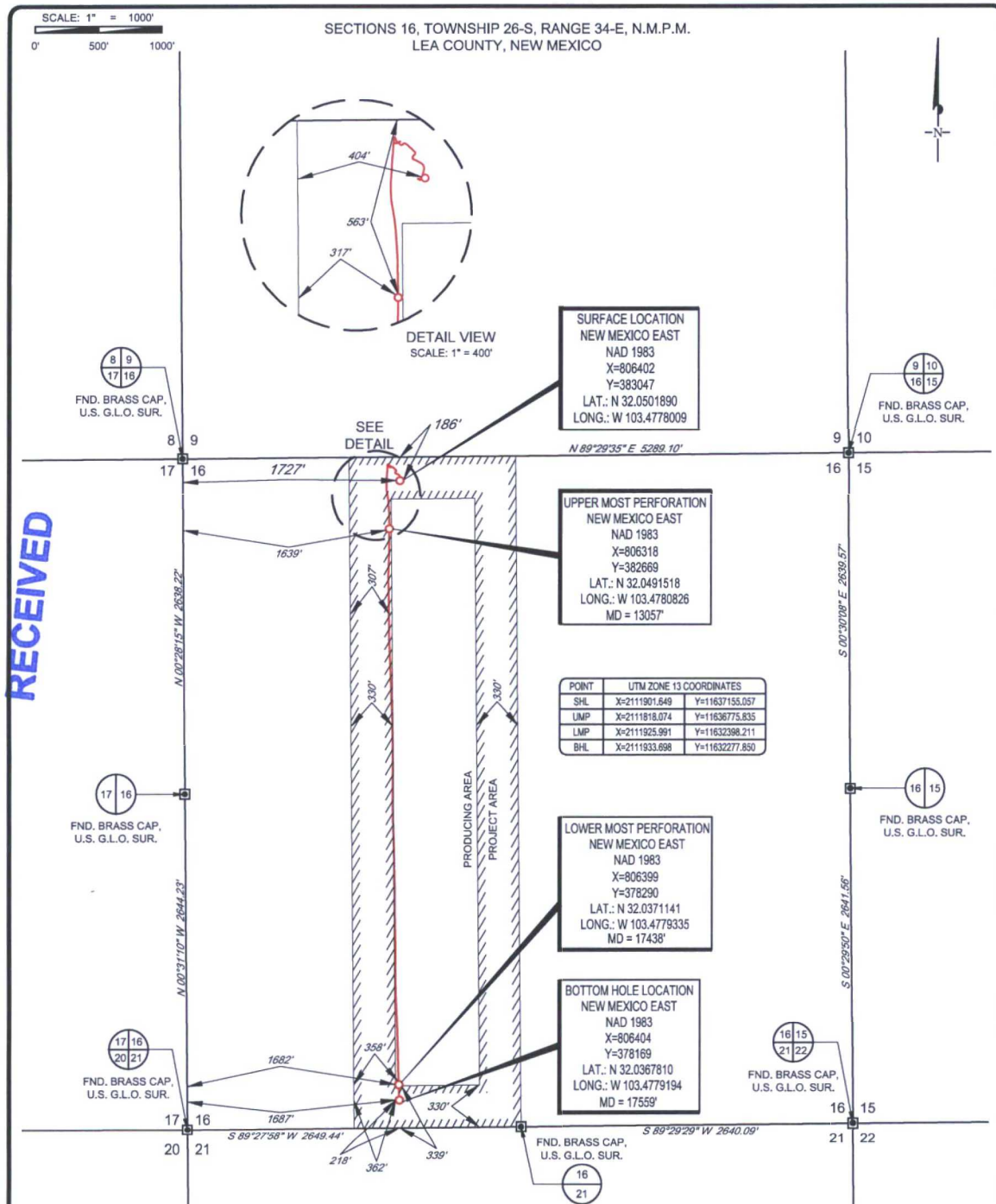
No allowable will be assigned to this completion until all interests have been consolidated or a non-standard unit has been approved by the division.



HOBBS OCD

OCT 31 2017

RECEIVED



LEASE NAME & WELL NO.: NAUTILUS 16 STATE COM #710H
SECTION 16 TWP 26-S RGE 34-E SURVEY N.M.P.M.
COUNTY LEA STATE NM ELEVATION 3330'
DESCRIPTION 186' FNL & 1727' FWL



TOPOGRAPHIC
LOYALTY INNOVATION LEGACY

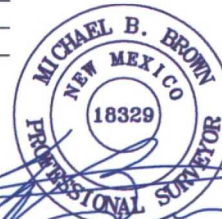
1400 EVERMAN PARKWAY, Ste. 197 • FT. WORTH, TEXAS 76140
TELEPHONE: (817) 744-7512 • FAX: (817) 744-7548
2903 NORTH BIG SPRING • MIDLAND, TEXAS 79705
TELEPHONE: (432) 682-1653 OR (800) 767-1653 • FAX (432) 682-1743
WWW.TOPOGRAPHIC.COM



eog resources, Inc.

| NAUTILUS 16 STATE COM #710H AS-COMPLETED | REVISION: |
|------------------------------------------------|-----------|
| DATE: 10/20/17 | |
| FILE: AD_NAUTILUS16STATECOM_710H | |
| DRAWN BY: A.M.D. | |
| SHEET: 1 OF 1 | |

NOTES:
1. ORIGINAL DOCUMENT SIZE: 8.5" X 14"
2. ALL BEARINGS, DISTANCES, AND COORDINATE VALUES CONTAINED HEREIN ARE GRID BASED UPON THE NEW MEXICO STATE PLANE COORDINATE SYSTEM, EAST ZONE, U.S. SURVEY FEET, NORTH AMERICAN DATUM 1983.
3. THIS WELL LOCATION SHOWN HEREON HAS BEEN SURVEYED ON THE GROUND UNDER MY SUPERVISION AND PREPARED ACCORDING TO THE EVIDENCE FOUND AT THE TIME OF SURVEY, AND DATA PROVIDED BY EOG RESOURCES, INC. THIS CERTIFICATION IS MADE AND LIMITED TO THOSE PERSONS OR ENTITIES SHOWN ON THE FACE OF THIS PLAT AND IS NON-TRANSFERABLE. THIS SURVEY IS CERTIFIED FOR THIS TRANSACTION ONLY.



Michael Blake Brown, P.S. No. 18329
OCTOBER 20, 2017