

District I  
1625 N. French Dr., Hobbs, NM 88240  
Phone: (575) 393-6161 Fax: (575) 393-0720  
District II  
811 S. First St., Artesia, NM 88210  
Phone: (575) 748-1283 Fax: (575) 748-9720  
District III  
1000 Rio Brazos Road, Aztec, NM 87410  
Phone: (505) 334-6178 Fax: (505) 334-6170  
District IV  
1220 S. St. Francis Dr., Santa Fe, NM 87505  
Phone: (505) 476-3460 Fax: (505) 476-3462

State of New Mexico  
Energy, Minerals & Natural Resources Department  
**OIL CONSERVATION DIVISION**  
1220 South St. Francis Dr.  
Santa Fe, NM 87505

Form C-102  
Revised August 1, 2011  
Submit one copy to appropriate  
District Office

☐ AMENDED REPORT

**WELL LOCATION AND ACREAGE DEDICATION PLAT**

<sup>1</sup> API Number 30-025-44166	<sup>2</sup> Pool Code 98250	<sup>3</sup> Pool Name Wildcat Wolfcamp (GAS)
<sup>4</sup> Property Code 319775	<sup>5</sup> Property Name VACA DRAW 20-17 FEDERAL	<sup>6</sup> Well Number 7H
<sup>7</sup> OGRID No. 215099	<sup>8</sup> Operator Name CIMAREX ENERGY CO.	<sup>9</sup> Elevation 3422.9'

**Surface Location**

UL or lot no.	Section	Township	Range	Lot Idn	Feet from the	North/South line	Feet from the	East/West line	County
M	20	25S	33E		330	SOUTH	710	WEST	LEA

**Bottom Hole Location If Different From Surface**

UL or lot no.	Section	Township	Range	Lot Idn	Feet from the	North/South line	Feet from the	East/West line	County
D	17	25S	33E		330	NORTH	1130	WEST	LEA
<sup>12</sup> Dedicated Acres 640		<sup>13</sup> Joint or Infill		<sup>14</sup> Consolidation Code		<sup>15</sup> Order No.			

No allowable will be assigned to this completion until all interests have been consolidated or a non-standard unit has been approved by the division.

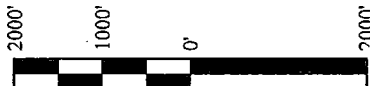
**NOTE:**

Distances referenced on plat to section lines are perpendicular.

<b>NAD 83 (SURFACE HOLE LOCATION)</b>	
LATITUDE = 32°06'35.06" (32.109739)	
LONGITUDE = 103°36'02.00" (103.600556)	
<b>NAD 27 (SURFACE HOLE LOCATION)</b>	
LATITUDE = 32°06'34.61" (32.109614)	
LONGITUDE = 103°36'00.30" (103.600083)	
<b>STATE PLANE NAD 83 (N.M. EAST)</b>	
N: 404430.67 E: 768221.88	
<b>STATE PLANE NAD 27 (N.M. EAST)</b>	
N: 404372.88 E: 727035.73	
<b>NAD 83 (BOTTOM HOLE LOCATION)</b>	
LATITUDE = 32°08'13.02" (32.136950)	
LONGITUDE = 103°35'57.08" (103.599189)	
<b>NAD 27 (BOTTOM HOLE LOCATION)</b>	
LATITUDE = 32°08'12.57" (32.136825)	
LONGITUDE = 103°35'55.37" (103.598714)	
<b>STATE PLANE NAD 83 (N.M. EAST)</b>	
N: 414332.34 E: 768577.46	
<b>STATE PLANE NAD 27 (N.M. EAST)</b>	
N: 414274.31 E: 727391.77	

**LINE TABLE**

LINE	DIRECTION	LENGTH
L1	N46°14'45"E	580.26'



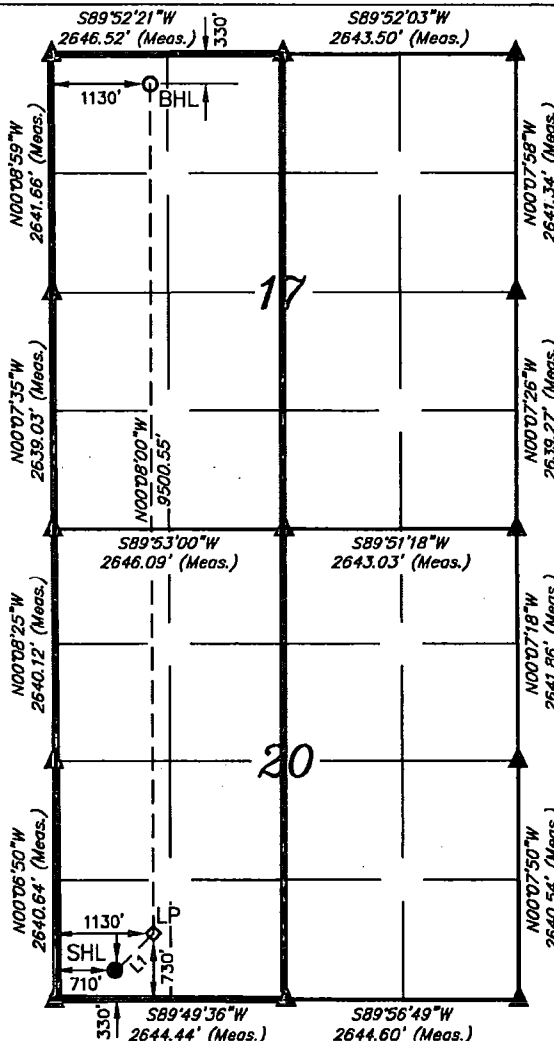
**SCALE**

DRAWN BY: S.F. 01-20-17

REV: I 04-12-17 S.F.

(ADDED BOTTOM HOLE)

- = SURFACE HOLE LOCATION
- = BOTTOM HOLE LOCATION
- ▲ = SECTION CORNERS LOCATED
- ◇ = LANDING POINT



**"OPERATOR CERTIFICATION**

I hereby certify that the information contained herein is true and complete to the best of my knowledge and belief, and that this organization either owns a working interest or unlicensed mineral interest in the land including the proposed bottom hole location or has a right to drill this well at this location pursuant to a contract with an owner of such a mineral or working interest, or to a voluntary pooling agreement or a compulsory pooling order heretofore entered by the division.

Signature: *A Easterling* Date: 4/19/17

Aricka Easterling

Printed Name

aeasterling@cimarex.com

E-mail Address

**"SURVEYOR CERTIFICATION**

I hereby certify that the well location shown on this plat was plotted from field notes of actual surveys made by me or under my supervision, and that the same is true and correct to the best of my belief.

January 19, 2017

Date of Survey

Signature and Seal of Professional Surveyor:



Certificate Number: