

## Hydrogen Sulfide Plan Summary

- A. All personnel shall receive proper H<sub>2</sub>S training in accordance with Onshore Order III.C.3.a.
- B. Briefing Area: two perpendicular areas will be designated by signs and readily accessible.
- C. Required Emergency Equipment:

- Well control equipment
  - a. Flare line 150' from wellhead to be ignited by flare gun.
  - b. Choke manifold with a remotely operated choke.
  - c. Mud/gas separator

- Protective equipment for essential personnel:

### Breathing apparatus:

- a. Rescue Packs (SCBA) — 1 unit shall be placed at each breathing area, 2 shall be stored in the safety trailer.
- b. Work/Escapes packs — 4 packs shall be stored on the rig floor with sufficient air hose not to restrict work activity.
- c. Emergency Escape Packs — 4 packs shall be stored in the doghouse for emergency evacuation.

### Auxiliary Rescue Equipment:

- a. Stretcher
- b. Two OSHA full body harness
- c. 100 ft 5/8 inch OSHA approved rope
- d. 1-20# class ABC fire extinguisher

- H<sub>2</sub>S detection and monitoring equipment:

The stationary detector with three sensors will be placed in the upper dog house if equipped, set to visually alarm @ 10 ppm and audible @ 14 ppm. Calibrate a minimum of every 30 days or as needed. The sensors will be placed in the following places: Rig floor / Bell nipple / End of flow line or where well bore fluid is being discharged.

(Gas sample tubes will be stored in the safety trailer)

- Visual warning systems.

- a. One color code condition sign will be placed at the entrance to the site reflecting the possible conditions at the site.
- b. A colored condition flag will be on display, reflecting the current condition at the site at the time.
- c. Two wind socks will be placed in strategic locations, visible from all angles.

**EOG RESOURCES, INC.**  
**NAUTILUS 16 FED COM #708H**

■ **Mud program:**

The mud program has been designed to minimize the volume of H<sub>2</sub>S circulated to surface. The operator will have the necessary mud products to minimize hazards while drilling in H<sub>2</sub>S bearing zones.

■ **Metallurgy:**

All drill strings, casings, tubing, wellhead, blowout preventer, drilling spool, kill lines, choke manifold and lines, and valves shall be suitable for H<sub>2</sub>S service.

■ **Communication:**

Communication will be via cell phones and land lines where available.

**EOG RESOURCES, INC.**  
**NAUTILUS 16 FED COM #708H**

**Emergency Assistance Telephone List**

**PUBLIC SAFETY:** **911 or**

Lea County Sheriff's Department (575) 396-3611

Rod Coffman

**Fire Department:**

Carlsbad (575) 885-3125

Artesia (575) 746-5050

**Hospitals:**

Carlsbad (575) 887-4121

Artesia (575) 748-3333

Hobbs (575) 392-1979

Dept. of Public Safety/Carlsbad (575) 748-9718

Highway Department (575) 885-3281

New Mexico Oil Conservation (575) 476-3440

U.S. Dept. of Labor (575) 887-1174

**EOG Resources, Inc.**

EOG / Midland Office (432) 686-3600

**Company Drilling Consultants:**

Jett Dueitt Cell (432) 230-4840

Blake Burney

**Drilling Engineer**

Steve Munsell Office (432) 686-3609

Cell (432) 894-1256

**Drilling Manager**

Heath Work Office (432) 686-6716

Cell (903) 780-1179

**Drilling Superintendent**

Jason Fitzgerald Office (432) 848-9029

Cell (318) 347-3916

**H&P Drilling**

H&P Drilling Office (432) 563-5757

H&P 415 Drilling Rig Rig (432) 230-4840

**Tool Pusher:**

Johnathan Craig Cell (817) 760-6374

Brad Garrett

**Safety**

Brian Chandler (HSE Manager) Office (432) 686-3695

Cell (817) 239-0251



**HOBBS OCD**

**NOV 30 2017**

**RECEIVED**

## **EOG Resources - Midland**

**Lea County, NM (NAD 83 NME)**

**Nautilus 16 Fed Com**

**#708H**

**OH**

**Plan: Plan #0.1**

## **Standard Planning Report**

**23 March, 2017**



EOG Resources, Inc.  
Planning Report

Database: EDM 5000.1 Single User Db  
Company: EOG Resources - Midland  
Project: Lea County, NM (NAD 83 NME)  
Site: Nautilus 16 Fed Com  
Well: #708H  
Wellbore: OH  
Design: Plan #0.1

Local Co-ordinate Reference: Well #708H  
TVD Reference: KB = 25' @ 3331.00usft  
MD Reference: KB = 25' @ 3331.00usft  
North Reference: Grid  
Survey Calculation Method: Minimum Curvature

Project	Lea County, NM (NAD 83 NME)		
Map System:	US State Plane 1983	System Datum:	Mean Sea Level
Geo Datum:	North American Datum 1983		
Map Zone:	New Mexico Eastern Zone		

Site: Nautilus 16 Fed Com

Site Position: Northing: 378,256.00 usft Latitude: 32.03696026  
From: Map Easting: 809,141.00 usft Longitude: -103.46908538  
Position Uncertainty: 0.00 usft Slot Radius: 13-3/16 " Grid Convergence: 0.46 °

Well: #708H

Well Position: +N/-S -15.00 usft Northing: 378,241.00 usft Latitude: 32.03695551  
+E/-W -1,664.00 usft Easting: 807,477.00 usft Longitude: -103.47445527  
Position Uncertainty: 0.00 usft Wellhead Elevation: 0.00 usft Ground Level: 3,306.00 usft

Wellbore: OH

Magnetics	Model Name	Sample Date	Declination (°)	Dip Angle (°)	Field Strength (nT)
	IGRF2015	3/22/2017	6.92	59.91	47,862

Design: Plan #0.1

Audit Notes:

Version: Phase: PLAN Tie On Depth: 0.00

Vertical Section:	Depth From (TVD) (usft)	+N/-S (usft)	+E/-W (usft)	Direction (°)
	0.00	0.00	0.00	3.36

Plan Sections

Measured Depth (usft)	Inclination (°)	Azimuth (°)	Vertical Depth (usft)	+N/-S (usft)	+E/-W (usft)	Dogleg Rate (°/100usft)	Build Rate (°/100usft)	Turn Rate (°/100usft)	TFO (°)	Target
0.00	0.00	0.00	0.00	0.00	0.00	0.00	0.00	0.00	0.00	
4,000.00	0.00	0.00	4,000.00	0.00	0.00	0.00	0.00	0.00	0.00	
4,369.66	3.70	115.44	4,369.40	-5.12	10.77	1.00	1.00	0.00	115.44	
12,311.68	3.70	115.44	12,294.90	-225.05	473.17	0.00	0.00	0.00	0.00	
13,075.97	90.10	359.50	12,785.00	253.28	497.53	12.00	11.30	-15.17	-115.88	
20,240.98	90.10	359.50	12,772.49	7,418.00	435.00	0.00	0.00	0.00	0.00	PBHL (Nautilus 16 Fe)



# EOG Resources, Inc.

## Planning Report

Database: EDM 5000.1 Single User Db  
 Company: EOG Resources - Midland  
 Project: Lea County, NM (NAD 83 NME)  
 Site: Nautilus 16 Fed Com  
 Well: #708H  
 Wellbore: OH  
 Design: Plan #0.1

Local Co-ordinate Reference: Well #708H  
 TVD Reference: KB = 25' @ 3331.00usft  
 MD Reference: KB = 25' @ 3331.00usft  
 North Reference: Grid  
 Survey Calculation Method: Minimum Curvature

### Planned Survey

Measured Depth (usft)	Inclination (°)	Azimuth (°)	Vertical Depth (usft)	+N/-S (usft)	+E/-W (usft)	Vertical Section (usft)	Dogleg Rate (°/100usft)	Build Rate (°/100usft)	Turn Rate (°/100usft)
0.00	0.00	0.00	0.00	0.00	0.00	0.00	0.00	0.00	0.00
100.00	0.00	0.00	100.00	0.00	0.00	0.00	0.00	0.00	0.00
200.00	0.00	0.00	200.00	0.00	0.00	0.00	0.00	0.00	0.00
300.00	0.00	0.00	300.00	0.00	0.00	0.00	0.00	0.00	0.00
400.00	0.00	0.00	400.00	0.00	0.00	0.00	0.00	0.00	0.00
500.00	0.00	0.00	500.00	0.00	0.00	0.00	0.00	0.00	0.00
600.00	0.00	0.00	600.00	0.00	0.00	0.00	0.00	0.00	0.00
700.00	0.00	0.00	700.00	0.00	0.00	0.00	0.00	0.00	0.00
800.00	0.00	0.00	800.00	0.00	0.00	0.00	0.00	0.00	0.00
900.00	0.00	0.00	900.00	0.00	0.00	0.00	0.00	0.00	0.00
1,000.00	0.00	0.00	1,000.00	0.00	0.00	0.00	0.00	0.00	0.00
1,100.00	0.00	0.00	1,100.00	0.00	0.00	0.00	0.00	0.00	0.00
1,200.00	0.00	0.00	1,200.00	0.00	0.00	0.00	0.00	0.00	0.00
1,300.00	0.00	0.00	1,300.00	0.00	0.00	0.00	0.00	0.00	0.00
1,400.00	0.00	0.00	1,400.00	0.00	0.00	0.00	0.00	0.00	0.00
1,500.00	0.00	0.00	1,500.00	0.00	0.00	0.00	0.00	0.00	0.00
1,600.00	0.00	0.00	1,600.00	0.00	0.00	0.00	0.00	0.00	0.00
1,700.00	0.00	0.00	1,700.00	0.00	0.00	0.00	0.00	0.00	0.00
1,800.00	0.00	0.00	1,800.00	0.00	0.00	0.00	0.00	0.00	0.00
1,900.00	0.00	0.00	1,900.00	0.00	0.00	0.00	0.00	0.00	0.00
2,000.00	0.00	0.00	2,000.00	0.00	0.00	0.00	0.00	0.00	0.00
2,100.00	0.00	0.00	2,100.00	0.00	0.00	0.00	0.00	0.00	0.00
2,200.00	0.00	0.00	2,200.00	0.00	0.00	0.00	0.00	0.00	0.00
2,300.00	0.00	0.00	2,300.00	0.00	0.00	0.00	0.00	0.00	0.00
2,400.00	0.00	0.00	2,400.00	0.00	0.00	0.00	0.00	0.00	0.00
2,500.00	0.00	0.00	2,500.00	0.00	0.00	0.00	0.00	0.00	0.00
2,600.00	0.00	0.00	2,600.00	0.00	0.00	0.00	0.00	0.00	0.00
2,700.00	0.00	0.00	2,700.00	0.00	0.00	0.00	0.00	0.00	0.00
2,800.00	0.00	0.00	2,800.00	0.00	0.00	0.00	0.00	0.00	0.00
2,900.00	0.00	0.00	2,900.00	0.00	0.00	0.00	0.00	0.00	0.00
3,000.00	0.00	0.00	3,000.00	0.00	0.00	0.00	0.00	0.00	0.00
3,100.00	0.00	0.00	3,100.00	0.00	0.00	0.00	0.00	0.00	0.00
3,200.00	0.00	0.00	3,200.00	0.00	0.00	0.00	0.00	0.00	0.00
3,300.00	0.00	0.00	3,300.00	0.00	0.00	0.00	0.00	0.00	0.00
3,400.00	0.00	0.00	3,400.00	0.00	0.00	0.00	0.00	0.00	0.00
3,500.00	0.00	0.00	3,500.00	0.00	0.00	0.00	0.00	0.00	0.00
3,600.00	0.00	0.00	3,600.00	0.00	0.00	0.00	0.00	0.00	0.00
3,700.00	0.00	0.00	3,700.00	0.00	0.00	0.00	0.00	0.00	0.00
3,800.00	0.00	0.00	3,800.00	0.00	0.00	0.00	0.00	0.00	0.00
3,900.00	0.00	0.00	3,900.00	0.00	0.00	0.00	0.00	0.00	0.00
4,000.00	0.00	0.00	4,000.00	0.00	0.00	0.00	0.00	0.00	0.00
4,100.00	1.00	115.44	4,100.00	-0.37	0.79	-0.33	1.00	1.00	0.00
4,200.00	2.00	115.44	4,199.96	-1.50	3.15	-1.31	1.00	1.00	0.00
4,300.00	3.00	115.44	4,299.86	-3.37	7.09	-2.95	1.00	1.00	0.00
4,369.66	3.70	115.44	4,369.40	-5.12	10.77	-4.48	1.00	1.00	0.00
4,400.00	3.70	115.44	4,399.68	-5.96	12.53	-5.22	0.00	0.00	0.00
4,500.00	3.70	115.44	4,499.47	-8.73	18.35	-7.64	0.00	0.00	0.00
4,600.00	3.70	115.44	4,599.26	-11.50	24.18	-10.06	0.00	0.00	0.00
4,700.00	3.70	115.44	4,699.06	-14.27	30.00	-12.49	0.00	0.00	0.00
4,800.00	3.70	115.44	4,798.85	-17.04	35.82	-14.91	0.00	0.00	0.00
4,900.00	3.70	115.44	4,898.64	-19.81	41.64	-17.33	0.00	0.00	0.00
5,000.00	3.70	115.44	4,998.43	-22.58	47.47	-19.76	0.00	0.00	0.00
5,100.00	3.70	115.44	5,098.22	-25.35	53.29	-22.18	0.00	0.00	0.00
5,200.00	3.70	115.44	5,198.02	-28.11	59.11	-24.61	0.00	0.00	0.00



# EOG Resources, Inc.

## Planning Report

Database: EDM 5000.1 Single User Db  
 Company: EOG Resources - Midland  
 Project: Lea County, NM (NAD 83 NME)  
 Site: Nautilus 16 Fed Com  
 Well: #708H  
 Wellbore: OH  
 Design: Plan #0.1

Local Co-ordinate Reference: Well #708H  
 TVD Reference: KB = 25' @ 3331.00usft  
 MD Reference: KB = 25' @ 3331.00usft  
 North Reference: Grid  
 Survey Calculation Method: Minimum Curvature

### Planned Survey

Measured Depth (usft)	Inclination (°)	Azimuth (°)	Vertical Depth (usft)	+N/-S (usft)	+E/-W (usft)	Vertical Section (usft)	Dogleg Rate (°/100usft)	Build Rate (°/100usft)	Turn Rate (°/100usft)
5,300.00	3.70	115.44	5,297.81	-30.88	64.93	-27.03	0.00	0.00	0.00
5,400.00	3.70	115.44	5,397.60	-33.65	70.75	-29.45	0.00	0.00	0.00
5,500.00	3.70	115.44	5,497.39	-36.42	76.58	-31.88	0.00	0.00	0.00
5,600.00	3.70	115.44	5,597.18	-39.19	82.40	-34.30	0.00	0.00	0.00
5,700.00	3.70	115.44	5,696.98	-41.96	88.22	-36.72	0.00	0.00	0.00
5,800.00	3.70	115.44	5,796.77	-44.73	94.04	-39.15	0.00	0.00	0.00
5,900.00	3.70	115.44	5,896.56	-47.50	99.87	-41.57	0.00	0.00	0.00
6,000.00	3.70	115.44	5,996.35	-50.27	105.69	-43.99	0.00	0.00	0.00
6,100.00	3.70	115.44	6,096.14	-53.04	111.51	-46.42	0.00	0.00	0.00
6,200.00	3.70	115.44	6,195.94	-55.81	117.33	-48.84	0.00	0.00	0.00
6,300.00	3.70	115.44	6,295.73	-58.58	123.16	-51.27	0.00	0.00	0.00
6,400.00	3.70	115.44	6,395.52	-61.35	128.98	-53.69	0.00	0.00	0.00
6,500.00	3.70	115.44	6,495.31	-64.11	134.80	-56.11	0.00	0.00	0.00
6,600.00	3.70	115.44	6,595.10	-66.88	140.62	-58.54	0.00	0.00	0.00
6,700.00	3.70	115.44	6,694.90	-69.65	146.44	-60.96	0.00	0.00	0.00
6,800.00	3.70	115.44	6,794.69	-72.42	152.27	-63.38	0.00	0.00	0.00
6,900.00	3.70	115.44	6,894.48	-75.19	158.09	-65.81	0.00	0.00	0.00
7,000.00	3.70	115.44	6,994.27	-77.96	163.91	-68.23	0.00	0.00	0.00
7,100.00	3.70	115.44	7,094.06	-80.73	169.73	-70.66	0.00	0.00	0.00
7,200.00	3.70	115.44	7,193.86	-83.50	175.56	-73.08	0.00	0.00	0.00
7,300.00	3.70	115.44	7,293.65	-86.27	181.38	-75.50	0.00	0.00	0.00
7,400.00	3.70	115.44	7,393.44	-89.04	187.20	-77.93	0.00	0.00	0.00
7,500.00	3.70	115.44	7,493.23	-91.81	193.02	-80.35	0.00	0.00	0.00
7,600.00	3.70	115.44	7,593.02	-94.58	198.85	-82.77	0.00	0.00	0.00
7,700.00	3.70	115.44	7,692.81	-97.35	204.67	-85.20	0.00	0.00	0.00
7,800.00	3.70	115.44	7,792.61	-100.11	210.49	-87.62	0.00	0.00	0.00
7,900.00	3.70	115.44	7,892.40	-102.88	216.31	-90.04	0.00	0.00	0.00
8,000.00	3.70	115.44	7,992.19	-105.65	222.13	-92.47	0.00	0.00	0.00
8,100.00	3.70	115.44	8,091.98	-108.42	227.96	-94.89	0.00	0.00	0.00
8,200.00	3.70	115.44	8,191.77	-111.19	233.78	-97.32	0.00	0.00	0.00
8,300.00	3.70	115.44	8,291.57	-113.96	239.60	-99.74	0.00	0.00	0.00
8,400.00	3.70	115.44	8,391.36	-116.73	245.42	-102.16	0.00	0.00	0.00
8,500.00	3.70	115.44	8,491.15	-119.50	251.25	-104.59	0.00	0.00	0.00
8,600.00	3.70	115.44	8,590.94	-122.27	257.07	-107.01	0.00	0.00	0.00
8,700.00	3.70	115.44	8,690.73	-125.04	262.89	-109.43	0.00	0.00	0.00
8,800.00	3.70	115.44	8,790.53	-127.81	268.71	-111.86	0.00	0.00	0.00
8,900.00	3.70	115.44	8,890.32	-130.58	274.54	-114.28	0.00	0.00	0.00
9,000.00	3.70	115.44	8,990.11	-133.35	280.36	-116.70	0.00	0.00	0.00
9,100.00	3.70	115.44	9,089.90	-136.11	286.18	-119.13	0.00	0.00	0.00
9,200.00	3.70	115.44	9,189.69	-138.88	292.00	-121.55	0.00	0.00	0.00
9,300.00	3.70	115.44	9,289.49	-141.65	297.82	-123.98	0.00	0.00	0.00
9,400.00	3.70	115.44	9,389.28	-144.42	303.65	-126.40	0.00	0.00	0.00
9,500.00	3.70	115.44	9,489.07	-147.19	309.47	-128.82	0.00	0.00	0.00
9,600.00	3.70	115.44	9,588.86	-149.96	315.29	-131.25	0.00	0.00	0.00
9,700.00	3.70	115.44	9,688.65	-152.73	321.11	-133.67	0.00	0.00	0.00
9,800.00	3.70	115.44	9,788.45	-155.50	326.94	-136.09	0.00	0.00	0.00
9,900.00	3.70	115.44	9,888.24	-158.27	332.76	-138.52	0.00	0.00	0.00
10,000.00	3.70	115.44	9,988.03	-161.04	338.58	-140.94	0.00	0.00	0.00
10,100.00	3.70	115.44	10,087.82	-163.81	344.40	-143.36	0.00	0.00	0.00
10,200.00	3.70	115.44	10,187.61	-166.58	350.23	-145.79	0.00	0.00	0.00
10,300.00	3.70	115.44	10,287.41	-169.35	356.05	-148.21	0.00	0.00	0.00
10,400.00	3.70	115.44	10,387.20	-172.11	361.87	-150.64	0.00	0.00	0.00
10,500.00	3.70	115.44	10,486.99	-174.88	367.69	-153.06	0.00	0.00	0.00
10,600.00	3.70	115.44	10,586.78	-177.65	373.51	-155.48	0.00	0.00	0.00



# EOG Resources, Inc.

## Planning Report

Database: EDM 5000.1 Single User Db  
 Company: EOG Resources - Midland  
 Project: Lea County, NM (NAD 83 NME)  
 Site: Nautilus 16 Fed Com  
 Well: #708H  
 Wellbore: OH  
 Design: Plan #0.1

Local Co-ordinate Reference: Well #708H  
 TVD Reference: KB = 25' @ 3331.00usft  
 MD Reference: KB = 25' @ 3331.00usft  
 North Reference: Grid  
 Survey Calculation Method: Minimum Curvature

### Planned Survey

Measured Depth (usft)	Inclination (°)	Azimuth (°)	Vertical Depth (usft)	+N/-S (usft)	+E/-W (usft)	Vertical Section (usft)	Dogleg Rate (°/100usft)	Build Rate (°/100usft)	Turn Rate (°/100usft)
10,700.00	3.70	115.44	10,686.57	-180.42	379.34	-157.91	0.00	0.00	0.00
10,800.00	3.70	115.44	10,786.37	-183.19	385.16	-160.33	0.00	0.00	0.00
10,900.00	3.70	115.44	10,886.16	-185.96	390.98	-162.75	0.00	0.00	0.00
11,000.00	3.70	115.44	10,985.95	-188.73	396.80	-165.18	0.00	0.00	0.00
11,100.00	3.70	115.44	11,085.74	-191.50	402.63	-167.60	0.00	0.00	0.00
11,200.00	3.70	115.44	11,185.53	-194.27	408.45	-170.02	0.00	0.00	0.00
11,300.00	3.70	115.44	11,285.32	-197.04	414.27	-172.45	0.00	0.00	0.00
11,400.00	3.70	115.44	11,385.12	-199.81	420.09	-174.87	0.00	0.00	0.00
11,500.00	3.70	115.44	11,484.91	-202.58	425.92	-177.30	0.00	0.00	0.00
11,600.00	3.70	115.44	11,584.70	-205.35	431.74	-179.72	0.00	0.00	0.00
11,700.00	3.70	115.44	11,684.49	-208.12	437.56	-182.14	0.00	0.00	0.00
11,800.00	3.70	115.44	11,784.28	-210.88	443.38	-184.57	0.00	0.00	0.00
11,900.00	3.70	115.44	11,884.08	-213.65	449.21	-186.99	0.00	0.00	0.00
12,000.00	3.70	115.44	11,983.87	-216.42	455.03	-189.41	0.00	0.00	0.00
12,100.00	3.70	115.44	12,083.66	-219.19	460.85	-191.84	0.00	0.00	0.00
12,200.00	3.70	115.44	12,183.45	-221.96	466.67	-194.26	0.00	0.00	0.00
12,300.00	3.70	115.44	12,283.24	-224.73	472.49	-196.69	0.00	0.00	0.00
12,311.68	3.70	115.44	12,294.90	-225.05	473.17	-196.97	0.00	0.00	0.00
12,325.00	3.33	89.80	12,308.20	-225.24	473.95	-197.11	12.00	-2.79	-192.46
12,350.00	4.47	47.57	12,333.14	-224.58	475.39	-196.36	12.00	4.56	-168.91
12,375.00	6.84	28.47	12,358.02	-222.61	476.82	-194.32	12.00	9.50	-76.40
12,400.00	9.57	19.66	12,382.76	-219.34	478.23	-190.97	12.00	10.93	-35.25
12,425.00	12.43	14.79	12,407.30	-214.78	479.62	-186.34	12.00	11.42	-19.46
12,450.00	15.34	11.73	12,431.57	-208.94	480.98	-180.43	12.00	11.64	-12.22
12,475.00	18.28	9.64	12,455.50	-201.84	482.31	-173.26	12.00	11.75	-8.39
12,500.00	21.23	8.11	12,479.02	-193.49	483.60	-164.85	12.00	11.82	-6.13
12,525.00	24.20	6.93	12,502.08	-183.92	484.86	-155.22	12.00	11.86	-4.69
12,550.00	27.17	6.01	12,524.61	-173.15	486.07	-144.40	12.00	11.89	-3.72
12,575.00	30.15	5.25	12,546.54	-161.22	487.25	-132.42	12.00	11.91	-3.03
12,600.00	33.13	4.61	12,567.83	-148.16	488.37	-119.31	12.00	11.93	-2.53
12,625.00	36.12	4.07	12,588.40	-133.99	489.44	-105.11	12.00	11.94	-2.16
12,650.00	39.10	3.61	12,608.20	-118.77	490.46	-89.86	12.00	11.95	-1.87
12,675.00	42.09	3.19	12,627.18	-102.54	491.42	-73.59	12.00	11.95	-1.65
12,700.00	45.08	2.83	12,645.29	-85.33	492.33	-56.36	12.00	11.96	-1.47
12,725.00	48.07	2.50	12,662.47	-67.19	493.17	-38.21	12.00	11.96	-1.32
12,750.00	51.06	2.20	12,678.68	-48.18	493.95	-19.18	12.00	11.97	-1.20
12,775.00	54.05	1.92	12,693.88	-28.35	494.66	0.66	12.00	11.97	-1.10
12,800.00	57.05	1.66	12,708.02	-7.74	495.30	21.27	12.00	11.97	-1.02
12,825.00	60.04	1.43	12,721.07	13.57	495.88	42.58	12.00	11.97	-0.96
12,850.00	63.03	1.20	12,732.98	35.54	496.38	64.54	12.00	11.97	-0.90
12,875.00	66.03	0.99	12,743.73	58.11	496.81	87.09	12.00	11.98	-0.85
12,887.02	67.47	0.89	12,748.47	69.14	496.99	98.12	12.00	11.98	-0.82

### FTP (Nautilus 16 Fed Com #708H)

12,900.00	69.02	0.78	12,753.29	81.20	497.17	110.17	12.00	11.98	-0.81
12,925.00	72.01	0.59	12,761.62	104.77	497.45	133.71	12.00	11.98	-0.78
12,950.00	75.01	0.40	12,768.72	128.73	497.65	157.65	12.00	11.98	-0.76
12,975.00	78.00	0.21	12,774.55	153.04	497.78	181.92	12.00	11.98	-0.74
13,000.00	81.00	0.03	12,779.11	177.62	497.84	206.46	12.00	11.98	-0.72
13,025.00	83.99	359.86	12,782.37	202.40	497.81	231.20	12.00	11.98	-0.71
13,050.00	86.99	359.68	12,784.34	227.32	497.71	256.07	12.00	11.98	-0.70
13,075.97	90.10	359.50	12,785.00	253.28	497.53	281.97	12.00	11.98	-0.70
13,100.00	90.10	359.50	12,784.95	277.31	497.32	305.95	0.00	0.00	0.00
13,200.00	90.10	359.50	12,784.78	377.30	496.44	405.72	0.00	0.00	0.00





# EOG Resources, Inc.

## Planning Report

Database: EDM 5000.1 Single User Db  
Company: EOG Resources - Midland  
Project: Lea County, NM (NAD 83 NME)  
Site: Nautilus 16 Fed Com  
Well: #708H  
Wellbore: OH  
Design: Plan #0.1

Local Co-ordinate Reference: Well #708H  
TVD Reference: KB = 25' @ 3331.00usft  
MD Reference: KB = 25' @ 3331.00usft  
North Reference: Grid  
Survey Calculation Method: Minimum Curvature

### Planned Survey

Measured Depth (usft)	Inclination (°)	Azimuth (°)	Vertical Depth (usft)	+N/-S (usft)	+E/-W (usft)	Vertical Section (usft)	Dogleg Rate (°/100usft)	Build Rate (°/100usft)	Turn Rate (°/100usft)
13,300.00	90.10	359.50	12,784.60	477.30	495.57	505.49	0.00	0.00	0.00
13,400.00	90.10	359.50	12,784.43	577.30	494.70	605.27	0.00	0.00	0.00
13,500.00	90.10	359.50	12,784.26	677.29	493.83	705.04	0.00	0.00	0.00
13,600.00	90.10	359.50	12,784.08	777.29	492.95	804.81	0.00	0.00	0.00
13,700.00	90.10	359.50	12,783.91	877.28	492.08	904.59	0.00	0.00	0.00
13,800.00	90.10	359.50	12,783.73	977.28	491.21	1,004.36	0.00	0.00	0.00
13,900.00	90.10	359.50	12,783.56	1,077.28	490.33	1,104.13	0.00	0.00	0.00
14,000.00	90.10	359.50	12,783.38	1,177.27	489.46	1,203.91	0.00	0.00	0.00
14,100.00	90.10	359.50	12,783.21	1,277.27	488.59	1,303.68	0.00	0.00	0.00
14,200.00	90.10	359.50	12,783.03	1,377.26	487.72	1,403.45	0.00	0.00	0.00
14,300.00	90.10	359.50	12,782.86	1,477.26	486.84	1,503.23	0.00	0.00	0.00
14,400.00	90.10	359.50	12,782.68	1,577.26	485.97	1,603.00	0.00	0.00	0.00
14,500.00	90.10	359.50	12,782.51	1,677.25	485.10	1,702.77	0.00	0.00	0.00
14,600.00	90.10	359.50	12,782.34	1,777.25	484.23	1,802.55	0.00	0.00	0.00
14,700.00	90.10	359.50	12,782.16	1,877.24	483.35	1,902.32	0.00	0.00	0.00
14,800.00	90.10	359.50	12,781.99	1,977.24	482.48	2,002.09	0.00	0.00	0.00
14,900.00	90.10	359.50	12,781.81	2,077.24	481.61	2,101.87	0.00	0.00	0.00
15,000.00	90.10	359.50	12,781.64	2,177.23	480.74	2,201.64	0.00	0.00	0.00
15,100.00	90.10	359.50	12,781.46	2,277.23	479.86	2,301.42	0.00	0.00	0.00
15,200.00	90.10	359.50	12,781.29	2,377.23	478.99	2,401.19	0.00	0.00	0.00
15,300.00	90.10	359.50	12,781.11	2,477.22	478.12	2,500.96	0.00	0.00	0.00
15,400.00	90.10	359.50	12,780.94	2,577.22	477.24	2,600.74	0.00	0.00	0.00
15,500.00	90.10	359.50	12,780.76	2,677.21	476.37	2,700.51	0.00	0.00	0.00
15,600.00	90.10	359.50	12,780.59	2,777.21	475.50	2,800.28	0.00	0.00	0.00
15,700.00	90.10	359.50	12,780.42	2,877.21	474.63	2,900.06	0.00	0.00	0.00
15,800.00	90.10	359.50	12,780.24	2,977.20	473.75	2,999.83	0.00	0.00	0.00
15,900.00	90.10	359.50	12,780.07	3,077.20	472.88	3,099.60	0.00	0.00	0.00
16,000.00	90.10	359.50	12,779.89	3,177.19	472.01	3,199.38	0.00	0.00	0.00
16,100.00	90.10	359.50	12,779.72	3,277.19	471.14	3,299.15	0.00	0.00	0.00
16,200.00	90.10	359.50	12,779.54	3,377.19	470.26	3,398.92	0.00	0.00	0.00
16,300.00	90.10	359.50	12,779.37	3,477.18	469.39	3,498.70	0.00	0.00	0.00
16,400.00	90.10	359.50	12,779.19	3,577.18	468.52	3,598.47	0.00	0.00	0.00
16,500.00	90.10	359.50	12,779.02	3,677.17	467.65	3,698.24	0.00	0.00	0.00
16,600.00	90.10	359.50	12,778.84	3,777.17	466.77	3,798.02	0.00	0.00	0.00
16,700.00	90.10	359.50	12,778.67	3,877.17	465.90	3,897.79	0.00	0.00	0.00
16,800.00	90.10	359.50	12,778.50	3,977.16	465.03	3,997.56	0.00	0.00	0.00
16,900.00	90.10	359.50	12,778.32	4,077.16	464.16	4,097.34	0.00	0.00	0.00
17,000.00	90.10	359.50	12,778.15	4,177.15	463.28	4,197.11	0.00	0.00	0.00
17,100.00	90.10	359.50	12,777.97	4,277.15	462.41	4,296.88	0.00	0.00	0.00
17,200.00	90.10	359.50	12,777.80	4,377.15	461.54	4,396.66	0.00	0.00	0.00
17,300.00	90.10	359.50	12,777.62	4,477.14	460.66	4,496.43	0.00	0.00	0.00
17,400.00	90.10	359.50	12,777.45	4,577.14	459.79	4,596.20	0.00	0.00	0.00
17,500.00	90.10	359.50	12,777.27	4,677.13	458.92	4,695.98	0.00	0.00	0.00
17,600.00	90.10	359.50	12,777.10	4,777.13	458.05	4,795.75	0.00	0.00	0.00
17,700.00	90.10	359.50	12,776.93	4,877.13	457.17	4,895.53	0.00	0.00	0.00
17,800.00	90.10	359.50	12,776.75	4,977.12	456.30	4,995.30	0.00	0.00	0.00
17,900.00	90.10	359.50	12,776.58	5,077.12	455.43	5,095.07	0.00	0.00	0.00
18,000.00	90.10	359.50	12,776.40	5,177.11	454.56	5,194.85	0.00	0.00	0.00
18,100.00	90.10	359.50	12,776.23	5,277.11	453.68	5,294.62	0.00	0.00	0.00
18,200.00	90.10	359.50	12,776.05	5,377.11	452.81	5,394.39	0.00	0.00	0.00
18,300.00	90.10	359.50	12,775.88	5,477.10	451.94	5,494.17	0.00	0.00	0.00
18,400.00	90.10	359.50	12,775.70	5,577.10	451.07	5,593.94	0.00	0.00	0.00
18,500.00	90.10	359.50	12,775.53	5,677.09	450.19	5,693.71	0.00	0.00	0.00
18,600.00	90.10	359.50	12,775.35	5,777.09	449.32	5,793.49	0.00	0.00	0.00



# EOG Resources, Inc.

## Planning Report

Database: EDM 5000.1 Single User Db  
 Company: EOG Resources - Midland  
 Project: Lea County, NM (NAD 83 NME)  
 Site: Nautilus 16 Fed Com  
 Well: #708H  
 Wellbore: OH  
 Design: Plan #0.1

Local Co-ordinate Reference: Well #708H  
 TVD Reference: KB = 25' @ 3331.00usft  
 MD Reference: KB = 25' @ 3331.00usft  
 North Reference: Grid  
 Survey Calculation Method: Minimum Curvature

### Planned Survey

Measured Depth (usft)	Inclination (°)	Azimuth (°)	Vertical Depth (usft)	+N/-S (usft)	+E/-W (usft)	Vertical Section (usft)	Dogleg Rate (°/100usft)	Build Rate (°/100usft)	Turn Rate (°/100usft)
18,700.00	90.10	359.50	12,775.18	5,877.09	448.45	5,893.26	0.00	0.00	0.00
18,800.00	90.10	359.50	12,775.01	5,977.08	447.57	5,993.03	0.00	0.00	0.00
18,900.00	90.10	359.50	12,774.83	6,077.08	446.70	6,092.81	0.00	0.00	0.00
19,000.00	90.10	359.50	12,774.66	6,177.07	445.83	6,192.58	0.00	0.00	0.00
19,100.00	90.10	359.50	12,774.48	6,277.07	444.96	6,292.35	0.00	0.00	0.00
19,200.00	90.10	359.50	12,774.31	6,377.07	444.08	6,392.13	0.00	0.00	0.00
19,300.00	90.10	359.50	12,774.13	6,477.06	443.21	6,491.90	0.00	0.00	0.00
19,400.00	90.10	359.50	12,773.96	6,577.06	442.34	6,591.67	0.00	0.00	0.00
19,500.00	90.10	359.50	12,773.78	6,677.05	441.47	6,691.45	0.00	0.00	0.00
19,600.00	90.10	359.50	12,773.61	6,777.05	440.59	6,791.22	0.00	0.00	0.00
19,700.00	90.10	359.50	12,773.43	6,877.05	439.72	6,890.99	0.00	0.00	0.00
19,800.00	90.10	359.50	12,773.26	6,977.04	438.85	6,990.77	0.00	0.00	0.00
19,900.00	90.10	359.50	12,773.09	7,077.04	437.98	7,090.54	0.00	0.00	0.00
20,000.00	90.10	359.50	12,772.91	7,177.04	437.10	7,190.31	0.00	0.00	0.00
20,100.00	90.10	359.50	12,772.74	7,277.03	436.23	7,290.09	0.00	0.00	0.00
20,200.00	90.10	359.50	12,772.56	7,377.03	435.36	7,389.86	0.00	0.00	0.00
20,240.98	90.10	359.50	12,772.49	7,418.00	435.00	7,430.74	0.00	0.00	0.00

PBHL (Nautilus 16 Fed Com #708H)

### Design Targets

Target Name	Dip Angle (°)	Dip Dir. (°)	TVD (usft)	+N/-S (usft)	+E/-W (usft)	Northing (usft)	Easting (usft)	Latitude	Longitude
PBHL (Nautilus 16 Fed C - hit/miss target - Shape - plan hits target center - Point	0.00	0.00	12,772.49	7,418.00	435.00	385,659.00	807,912.00	32.05733565	-103.47286082
FTP (Nautilus 16 Fed C - plan misses target center by 39.59usft at 12887.02usft MD (12748.47 TVD, 69.14 N, 496.99 E) - Point	0.00	0.00	12,785.00	54.00	499.00	378,295.00	807,976.00	32.03709302	-103.47284367

HOBBS OCD

NOV 30 2017

RECEIVED



Lea County, NM (NAD 83 NME)

Nautilus 16 Fed Com #708H

Plan #0.1

PROJECT DETAILS: Lea County, NM (NAD 83 NME)

Geodetic System: US State Plane 1983  
Datum: North American Datum 1983  
Ellipsoid: GRS 1980  
Zone: New Mexico Eastern Zone  
System Datum: Mean Sea Level

WELL DETAILS: #708H

Ground Level: 3306.00  
KB = 25' @ 3331.00usft  
Northing: 378241.00 Easting: 807477.00 Latitude: 32.03695551 Longitude: -103.47445527

Azimuths to Grid North  
True North: -0.46°  
Magnetic North: 6.46°

Magnetic Field  
Strength: 47862.4nT  
Dip Angle: 59.91°  
Date: 3/22/2017  
Model: IGRF2015

To convert a Magnetic Direction to a Grid Direction, Add 6.47°  
To convert a Magnetic Direction to a True Direction, Add 6.92° East  
To convert a True Direction to a Grid Direction, Subtract 0.46°

## SECTION DETAILS

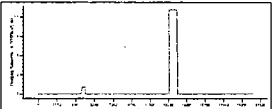
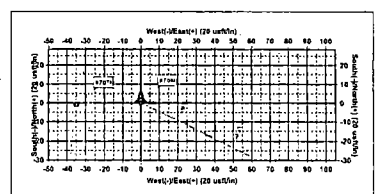
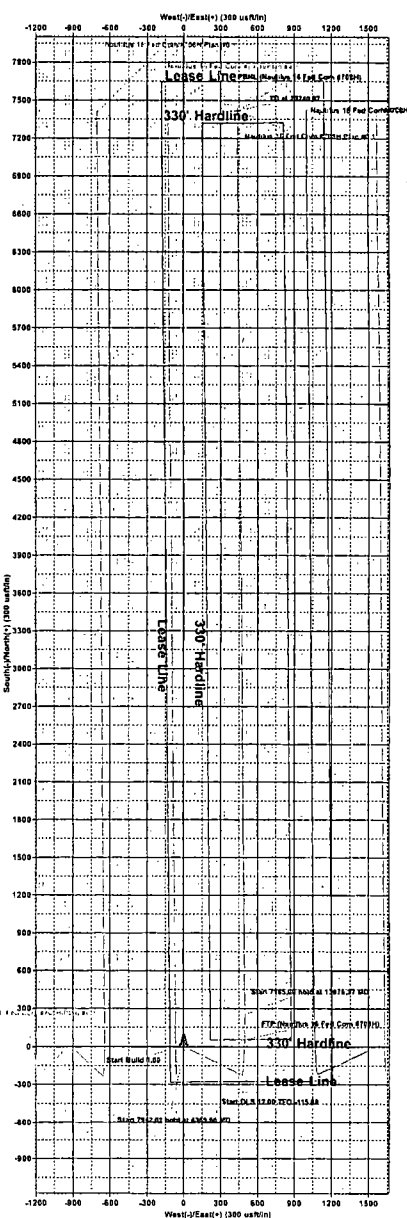
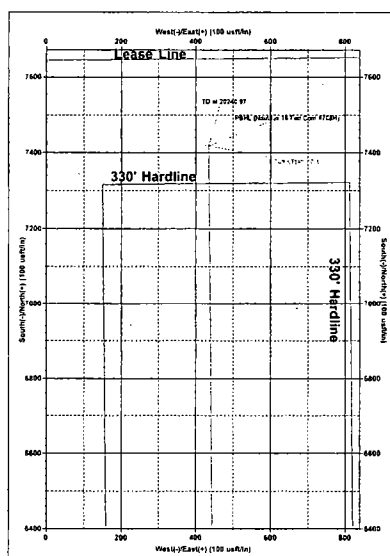
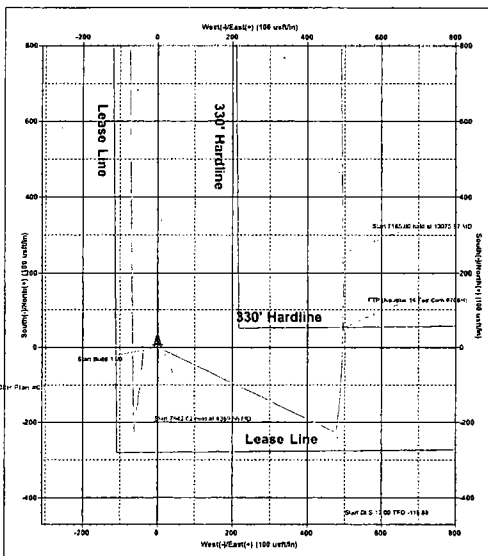
Sec	MD	Inc	Azi	TVD	+N/-S	+E/-W	Dleg	TFace	VFace	Target
1	0.00	0.00	0.00	0.00	0.00	0.00	0.00	0.00	0.00	
2	4000.00	0.00	0.00	4000.00	0.00	0.00	0.00	0.00	0.00	
3	4369.66	3.70	115.44	4369.40	-5.12	10.77	1.00	115.44	-4.48	
4	12311.68	3.70	115.44	12294.90	-225.05	473.17	0.00	0.00	-196.97	
5	13075.97	90.10	359.50	12785.00	253.28	497.53	12.00	-115.88	281.97	
6	20240.97	90.10	359.50	12772.49	7418.00	435.00	0.00	0.00	7430.74	PBHL (Nautilus 16 Fed Com #708H)

## CASING DETAILS

No casing data is available

## WELLBORE TARGET DETAILS (MAP CO-ORDINATES)

Name	TVD	+N/-S	+E/-W	Northing	Easting
PBHL (Nautilus 16 Fed Com #708H)	12772.49	7418.00	435.00	385659.06	807912.00
FTP (Nautilus 16 Fed Com #708H)	12785.00	54.00	499.00	378295.00	807976.00



WELLBORE TARGET DETAILS  
#708H  
3/22/2017

OD	Weight	Wall Th.	Grade	API Drift	Connection
7 5/8 in.	29.70 lb/ft	0.375 in.	VM 110 HC	6.750 in.	VAM® SLIJ-II

PIPE PROPERTIES	
Nominal OD	7.625 in.
Nominal ID	6.875 in.
Nominal Cross Section Area	8.541 sqin.
Grade Type	High Collapse
Min. Yield Strength	110 ksi
Max. Yield Strength	140 ksi
Min. Ultimate Tensile Strength	125 ksi

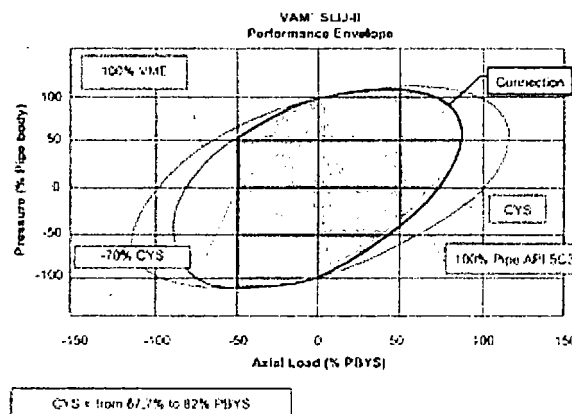
CONNECTION PROPERTIES	
Connection Type	Premium integral semi-flush
Connection OD (nom)	7.711 in.
Connection ID (nom)	6.820 in.
Make-up Loss	4.822 in.
Critical Cross Section	5.912 sqin.
Tension Efficiency	69.2 % of pipe
Compression Efficiency	48.5 % of pipe
Internal Pressure Efficiency	100 % of pipe
External Pressure Efficiency	100 % of pipe

CONNECTION PERFORMANCES	
Tensile Yield Strength	651 klb
Compression Resistance	455 klb
Internal Yield Pressure	9470 psi
Uniaxial Collapse Pressure	7890 psi
Max. Bending Capacity	TDB
Max Bending with Sealability	20 °/100 ft

FIELD TORQUE VALUES	
Min. Make-up torque	11300 ft.lb
Opti. Make-up torque	12600 ft.lb
Max. Make-up torque	13900 ft.lb

**VAM® SLIJ-II** is a semi-flush integral premium connection for all casing applications. It combines a near flush design with high performances in tension, compression and gas sealability.

VAM® SLIJ-II has been validated according to the most stringent tests protocols, and has an excellent performance history in the world's most prolific HPHT wells.



Do you need help on this product? - Remember no one knows VAM® like VAM

canada@vamfieldservice.com  
usa@vamfieldservice.com  
mexico@vamfieldservice.com  
brazil@vamfieldservice.com

uk@vamfieldservice.com  
dubai@vamfieldservice.com  
nigeria@vamfieldservice.com  
angola@vamfieldservice.com

china@vamfieldservice.com  
baku@vamfieldservice.com  
singapore@vamfieldservice.com  
australia@vamfieldservice.com

Over 140 VAM® Specialists available worldwide 24/7 for Rig Site Assistance

Other Connection Data Sheets are available at [www.vamservices.com](http://www.vamservices.com)

**Vallourec Group**



## Surface Use Plan of Operations

### Introduction

The following surface use plan of operations will be followed and carried out once the APD is approved. No other disturbance will be created other than what was submitted in this surface use plan. If any other surface disturbance is needed after the APD is approved, a BLM approved sundry notice or right of way application will be acquired prior to any new surface disturbance.

Before any surface disturbance is created, stakes or flagging will be installed to mark boundaries of permitted areas of disturbance, including soils storage areas. As necessary, slope, grade, and other construction control stakes will be placed to ensure construction in accordance with the surface use plan. All boundary markers will be maintained in place until final construction cleanup is completed. If disturbance boundary markers are disturbed or knocked down, they will be replaced before construction proceeds.

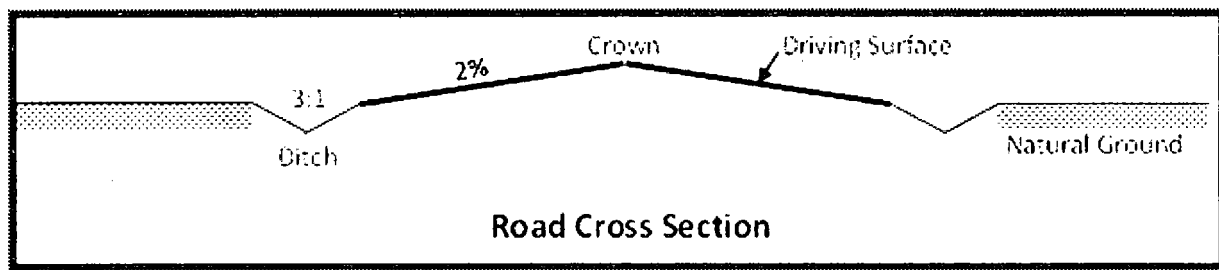
If terms and conditions are attached to the approved APD and amend any of the proposed actions in this surface use plan, we will adhere to the terms and conditions.

### 1. Existing Roads

- a. The existing access road route to the proposed project is depicted on Nautilus 16 Fed Com 708H vicinity map. Improvements to the driving surface will be done where necessary. No new surface disturbance will be done, unless otherwise noted in the New or Reconstructed Access Roads section of this surface use plan..
- b. The existing access road route to the proposed project does not cross lease or unit boundaries, so a BLM right-of-way grant will not be acquired for this proposed road route.
- c. The operator will improve or maintain existing roads in a condition the same as or better than before operations begin. The operator will repair pot holes, clear ditches, repair the crown, etc. All existing structures on the entire access route such as cattleguards, other range improvement projects, culverts, etc. will be properly repaired or replaced if they are damaged or have deteriorated beyond practical use.
- d. We will prevent and abate fugitive dust as needed, whether created by vehicular traffic, equipment operations, or wind events. BLM written approval will be acquired before application of surfactants, binding agents, or other dust suppression chemicals on roadways.

### 2. New or Reconstructed Access Roads

- a. An access road will be needed for this proposed project. See the survey plat for the location of the access road.
- b. The length of access road needed to be constructed for this proposed project is about 158 feet.
- c. The maximum driving width of the access road will be 24 feet. The maximum width of surface disturbance when constructing the access road will not exceed 25 feet. All areas outside of the driving surface will be revegetated.
- d. The access road will be constructed with 6 inches of compacted caliche.
- e. When the road travels on fairly level ground, the road will be crowned and ditched with a 2% slope from the tip of the road crown to the edge of the driving surface. The ditches will be 3 feet wide with 3:1 slopes. See Road Cross Section diagram below.



- f. The access road will be constructed with a ditch on each side of the road.
- g. The maximum grade for the access road will be 2 percent.
- h. No turnouts will be constructed on the proposed access road.
- i. No cattleguards will be installed for this proposed access road.
- j. Since the proposed access road crosses lease boundaries, a right-of-way will be required for this access road. A right-of-way grant will be applied for through the BLM. The access road will not be constructed until an approved BLM right-of-way grant is acquired.
- k. No culverts will be constructed for this proposed access road.
- l. No low water crossings will be constructed for the access road.
- m. Since the access road is on level ground, no lead-off ditches will be constructed for the proposed access road.
- n. Newly constructed or reconstructed roads, on surface under the jurisdiction of the Bureau of Land Management, will be constructed as outlined in the BLM "Gold Book" and to meet the standards of the anticipated traffic flow and all anticipated weather requirements as needed. Construction will include ditching, draining, crowning and capping or sloping and dipping the roadbed as necessary to provide a well-constructed and safe road.

### 3. Location of Existing Wells

- a. Nautilus 16 Fed Com 708H radius map of the APD depicts all known wells within a one mile radius of the proposed well.
- b. There is no other information regarding wells within a one mile radius.

### 4. Location of Existing and/or Proposed Production Facilities

- a. All permanent, lasting more than 6 months, above ground structures including but not limited to pumpjacks, storage tanks, barrels, pipeline risers, meter housing, etc. that are not subject to safety requirements will be painted a non-reflective paint color, Shale Green, from the BLM Standard Environmental Colors chart, unless another color is required in the APD Conditions of Approval.
- b. If any type of production facilities are located on the well pad, they will be strategically placed to allow for maximum interim reclamation, recontouring, and revegetation of the well location.
- c. A production facility is proposed to be installed off the proposed well location. Production from the well will be processed at this production facility. Nautilus 16 Fed Com infrastructure sketch depicts the location of the production facilities.
- d. The proposed production facility will have a secondary containment structure that is constructed to hold the capacity of 1-1/2 times the largest tank, plus freeboard to account for precipitation, unless more stringent

protective requirements are deemed necessary.

e. There is no other diagram that depicts production facilities.

f. A pipeline to transport production from the proposed well to the production facility will be installed.

i. We plan to install a 3 inch buried poly pipeline from the proposed well to the offsite production facility. The proposed length of the pipeline will be 1687 feet. The working pressure of the pipeline will be about 125 psi. A 50 feet wide work area will be needed to install the buried pipeline. In areas where blading is allowed, topsoil will be stockpiled and separated from the excavated trench mineral material. Final reclamation procedures will match the procedures in Plans for Surface Reclamation. When the excavated soil is backfilled, it will be compacted to prevent subsidence. No berm over the pipeline will be evident.

ii. Nautilus 16 Fed Com infrastructure sketch depicts the proposed production pipeline route from the well to the existing production facility.

iii. The proposed pipeline does not cross lease boundaries, so a right of way grant will not need to be acquired from the BLM.

**If any plans change regarding the production facility or other infrastructure (pipeline, electric line, etc.), we will submit a sundry notice or right of way (if applicable) prior to installation or construction.**

#### **Additional Pipeline(s)**

We propose to install 3 additional pipeline(s):

1. Buried gas lift pipeline:

a. We plan to install a 3 inch buried flex steel pipeline from the proposed well to the central battery. The proposed length of the pipeline will be 1687 feet. The working pressure of the pipeline will be about 125 psi. A 50 feet wide work area will be needed to install the buried pipeline. We will need an extra 10 foot wide area near corners to safely install the pipeline. In areas where blading is allowed, topsoil will be stockpiled and separated from the excavated trench mineral material. Final reclamation procedures will match the procedures in Plans for Surface Reclamation. When the excavated soil is backfilled, it will be compacted to prevent subsidence. No berm over the pipeline will be evident.

b. Nautilus 16 Fed Com infrastructure sketch depicts the proposed gas lift pipeline route.

c. The proposed pipeline does not cross lease boundaries, so a right of way grant will not need to be acquired from the BLM.

2. Buried produced water pipeline:

a. We plan to install a 12 inch buried poly pipeline from the central battery to the water disposal tie-in. The proposed length of the pipeline will be 8249 feet. The working pressure of the pipeline will be about 125 psi. A 50 feet wide work area will be needed to install the buried pipeline. We will need an extra 10 foot wide area near corners to safely install the pipeline. In areas where blading is allowed, topsoil will be stockpiled and separated from the excavated trench mineral material. Final reclamation procedures will match the procedures in Plans for Surface Reclamation. When the excavated soil is backfilled, it will be compacted to prevent subsidence. No berm over the pipeline will be evident.

b. Nautilus 16 Fed Com infrastructure sketch depicts the proposed produced water pipeline route.

c. The proposed pipeline does not cross lease boundaries, so a right of way grant will not need to

be acquired from the BLM.

3. Buried gas sales pipeline:

a. We plan to install a 16 inch buried steel pipeline from the central battery to the gas sales tie-in. The proposed length of the pipeline will be 7880 feet. The working pressure of the pipeline will be about 125 psi. A 50 feet wide work area will be needed to install the buried pipeline. We will need an extra 10 foot wide area near corners to safely install the pipeline. In areas where blading is allowed, topsoil will be stockpiled and separated from the excavated trench mineral material. Final reclamation procedures will match the procedures in Plans for Surface Reclamation. When the excavated soil is backfilled, it will be compacted to prevent subsidence. No berm over the pipeline will be evident.

b. Nautilus 16 Fed Com infrastructure sketch depicts the proposed gas sales pipeline route.

c. The proposed pipeline does not cross lease boundaries, so a right of way grant will not need to be acquired from the BLM.

**Electric Line(s)**

a. An electric line will be applied for through a sundry notice or BLM right of way at a later date.

**5. Location and Types of Water**

a. The source and location of the water supply are as follows: Water will be supplied from the frac pond as shown on the attached water source map. This location will be drilled using a combination of water mud systems (outlined in the drilling program). The water will be obtained from commercial water stations in the area or recycled treated water and hauled to location by trucks or poly pipelines using existing and proposed roads depicted on the proposed existing access road maps. In these cases where a poly pipeline is used to transport fresh water for drilling purposes, proper authorizations will be secured by the contractor.

b. Nautilus 16 Fed Com water source and caliche map depicts the proposed route for a 12 inch poly temporary (<90 days) water pipeline supplying water for drilling operations.

**6. Construction Material**

a. Caliche will be supplied from pits shown on the attached caliche source map.

Caliche utilized for the drilling pad will be obtained either from an existing approved mineral pit, or by benching into a hill, which will allow the pad to be level with existing caliche from the cut, or extracted by "Flipping" the well location. A mineral material permit will be obtained from BLM prior to excavating any caliche on Federal Lands. Amount will vary for each pad. The procedure for "Flipping" a well location is as follows:

\*

-An adequate amount of topsoil/root zone (usually top 6 inches of soil) will be stripped from the proposed well location and stockpiled along the side of the well location as depicted on the well site diagram/survey plat.

-An area will be used within the proposed well site dimensions to excavate caliche.

Subsoil will be removed and stockpiled within the surveyed well pad dimensions.

-Once caliche/surfacing mineral is found, the mineral material will be excavated and stock piled within the approved drilling pad dimensions.

-Then, subsoil will be pushed back in the excavated hole and caliche will be spread accordingly across the entire well pad and road (if available).

-Neither caliche, nor subsoil will be stock piled outside of the well pad dimensions. Topsoil will be stockpiled along the edge of the pad as depicted in the Well Site Layout or survey plat.

\*

In the event that no caliche is found onsite, caliche will be hauled in from a BLM approved caliche pit or other established mineral pit. A BLM mineral material permit will be acquired prior to obtaining any mineral material



from BLM pits or federal land.

## 7. Methods for Handling Waste

- a. Drilling fluids and produced oil and water from the well during drilling and completion operations will be stored safely and disposed of properly in an NMOCD approved disposal facility.
- b. Garbage and trash produced during drilling and completion operations will be collected in a trash container and disposed of properly at a state approved disposal facility. All trash on and around the well site will be collected for disposal.
- c. Human waste and grey water will be properly contained and disposed of properly at a state approved disposal facility.
- d. After drilling and completion operations, trash, chemicals, salts, frac sand and other waste material will be removed and disposed of properly at a state approved disposal facility.
- e. The well will be drilled utilizing a closed loop system. Drill cutting will be properly disposed of into steel tanks and taken to an NMOCD approved disposal facility.

## 8. Ancillary Facilities

- a. No ancillary facilities will be needed for this proposed project.

## 9. Well Site Layout

- a. The following information is presented in the well site survey plat or diagram:
  - i. reasonable scale (near 1":50')
  - ii. well pad dimensions
  - iii. well pad orientation
  - iv. drilling rig components
  - v. proposed access road
  - vi. elevations of all points
  - vii. topsoil stockpile
  - viii. reserve pit location/dimensions if applicable
  - ix. other disturbances needed (flare pit, stinger, frac farm pad, etc.)
  - x. existing structures within the 600' x 600' archaeological surveyed area (pipelines, electric lines, well pads, etc)
- b. The proposed drilling pad was staked and surveyed by a professional surveyor. The attached survey plat of the well site depicts the drilling pad layout as staked.
- c. A title of a well site diagram is Nautilus 16 Fed Com 708H rig layout. This diagram depicts the rig layout.
- d. Topsoil Salvaging
  - i. Grass, forbs, and small woody vegetation, such as mesquite will be excavated as the topsoil is removed. Large woody vegetation will be stripped and stored separately and respread evenly on the site following topsoil resspreading. Topsoil depth is defined as the top layer of soil that contains 80% of the roots. In areas to be heavily disturbed, the top 6 inches of soil material, will be stripped and stockpiled on the perimeter of the well location and along the perimeter of the access road to control run-on and run-off, to keep topsoil

viable, and to make redistribution of topsoil more efficient during interim reclamation. Stockpiled topsoil should include vegetative material. Topsoil will be clearly segregated and stored separately from subsoils. Contaminated soil will not be stockpiled, but properly treated and handled prior to topsoil salvaging.

## **10. Plans for Surface Reclamation**

### **Reclamation Objectives**

- i. The objective of interim reclamation is to restore vegetative cover and a portion of the landform sufficient to maintain healthy, biologically active topsoil; control erosion; and minimize habitat and forage loss, visual impact, and weed infestation, during the life of the well or facilities.
- ii. The long-term objective of final reclamation is to return the land to a condition similar to what existed prior to disturbance. This includes restoration of the landform and natural vegetative community, hydrologic systems, visual resources, and wildlife habitats. To ensure that the long-term objective will be reached through human and natural processes, actions will be taken to ensure standards are met for site stability, visual quality, hydrological functioning, and vegetative productivity.
- iii. The BLM will be notified at least 3 days prior to commencement of any reclamation procedures.
- iv. If circumstances allow, interim reclamation and/or final reclamation actions will be completed no later than 6 months from when the final well on the location has been completed or plugged. We will gain written permission from the BLM if more time is needed.
- v. Interim reclamation will be performed on the well site after the well is drilled and completed. Nautilus 16 Fed Com 708H interim reclamation depicts the location and dimensions of the planned interim reclamation for the well site.

### **Interim Reclamation Procedures (If performed)**

1. Within 30 days of well completion, the well location and surrounding areas will be cleared of, and maintained free of, all materials, trash, and equipment not required for production.
2. In areas planned for interim reclamation, all the surfacing material will be removed and returned to the original mineral pit or recycled to repair or build roads and well pads.
3. The areas planned for interim reclamation will then be recontoured to the original contour if feasible, or if not feasible, to an interim contour that blends with the surrounding topography as much as possible. Where applicable, the fill material of the well pad will be backfilled into the cut to bring the area back to the original contour. The interim cut and fill slopes prior to re-seeding will not be steeper than a 3:1 ratio, unless the adjacent native topography is steeper. Note: Constructed slopes may be much steeper during drilling, but will be recontoured to the above ratios during interim reclamation.
4. Topsoil will be evenly respread and aggressively revegetated over the entire disturbed area not needed for all-weather operations including cuts & fills. To seed the area, the proper BLM seed mixture, free of noxious weeds, will be used. Final seedbed preparation will consist of contour cultivating to a depth of 4 to 6 inches within 24 hours prior to seeding, dozer tracking, or other imprinting in order to break the soil crust and create seed germination micro-sites.
5. Proper erosion control methods will be used on the area to control erosion, runoff and siltation of the surrounding area.
6. The interim reclamation will be monitored periodically to ensure that vegetation has reestablished and that erosion is controlled.

### **Final Reclamation (well pad, buried pipelines, etc.)**

1. Prior to final reclamation procedures, the well pad, road, and surrounding area will be cleared of material, trash, and equipment.
2. All surfacing material will be removed and returned to the original mineral pit or recycled to repair or build roads and well pads.
3. All disturbed areas, including roads, pipelines, pads, production facilities, and interim reclaimed areas will be recontoured to the contour existing prior to initial construction or a contour that blends indistinguishably with the surrounding landscape. Topsoil that was spread over the interim reclamation areas will be stockpiled prior to recontouring. The topsoil will be redistributed evenly over the entire disturbed site to ensure successful revegetation.
4. After all the disturbed areas have been properly prepared, the areas will be seeded with the proper BLM seed mixture, free of noxious weeds. Final seedbed preparation will consist of contour cultivating to a depth of 4 to 6 inches within 24 hours prior to seeding, dozer tracking, or other imprinting in order to break the soil crust and create seed germination micro-sites.
5. Proper erosion control methods will be used on the entire area to control erosion, runoff and siltation of the surrounding area.
6. All unused equipment and structures including pipelines, electric line poles, tanks, etc. that serviced the well will be removed.
7. All reclaimed areas will be monitored periodically to ensure that revegetation occurs, that the area is not redisturbed, and that erosion is controlled.

## **11. Surface Ownership**

- a. The surface ownership of the proposed project is federal.

## **12. Other Information**

- a. An onsite meeting was conducted 01/17/17.  
We plan to use a 12-inch lay flat hose to transport water.  
We are asking for 4 associated pipelines all depicted on the attached Nautilus 16 Fed Com infrastructure sketch:  
One 3-inch flex steel gas lift line per well  
One 4-inch poly production flowline per well  
One 12-inch produced water disposal from the CTB to the existing disposal line.  
One 16-inch gas sales line from the CTB to the gas sales tie-in.  
The well is planned to be produced using gas lift as the artificial lift method.  
Produced water will be transported via pipeline to the EOG produced water gathering system.

## **13. Maps and Diagrams**

- Nautilus 16 Fed Com 708H vicinity map - Existing Road
- Nautilus 16 Fed Com 708H radius map - Wells Within One Mile
- Nautilus 16 Fed Com infrastructure sketch - Production Facilities Diagram
- Nautilus 16 Fed Com infrastructure sketch - Production Pipeline
- Nautilus 16 Fed Com infrastructure sketch - gas lift Pipeline
- Nautilus 16 Fed Com infrastructure sketch - produced water Pipeline
- Nautilus 16 Fed Com infrastructure sketch - gas sales Pipeline

---

EOG Resources, Inc.

SHL: 280 FSL & 2530 FEL, Section: 16, T.26S., R.34E.

Nautilus 16 Fed Com 708H

---

BHL: 2412 FSL & 2030 FEL, Section: 9, T.26S., R.34E.

---

Nautilus 16 Fed Com water source and caliche map - Drilling Water Pipeline

Nautilus 16 Fed Com 708H rig layout - Well Site Diagram

Nautilus 16 Fed Com 708H interim reclamation - Interim Reclamation

**HOBBS OCD**

**NOV 30 2017**

**RECEIVED**

**PECOS DISTRICT  
DRILLING OPERATIONS  
CONDITIONS OF APPROVAL**

OPERATOR'S NAME:	EOG Resources Inc.
LEASE NO.:	NM66927
WELL NAME & NO.:	708H-Nautilus 16 Fed Com
SURFACE HOLE FOOTAGE:	280'S & 2530'E
BOTTOM HOLE FOOTAGE:	2412'S & 2030'E
LOCATION:	Section 16, T.26 S., R.34 E., NMPM
COUNTY:	Lea County, New Mexico

**I. SPECIAL REQUIREMENT(S)**

**Communitization Agreement**

- The operator will submit a Communitization Agreement to the Carlsbad Field Office, 620 E Greene St. Carlsbad, New Mexico 88220, at least 90 days before the anticipated date of first production from a well subject to a spacing order issued by the New Mexico Oil Conservation Division. The Communitization Agreement will include the signatures of all working interest owners in all Federal and Indian leases subject to the Communitization Agreement (i.e., operating rights owners and lessees of record), or certification that the operator has obtained the written signatures of all such owners and will make those signatures available to the BLM immediately upon request.
- If the operator does not comply with this condition of approval, the BLM may take enforcement actions that include, but are not limited to, those specified in 43 CFR 3163.1.
- In addition, the well sign shall include the surface and bottom hole lease numbers. When the Communitization Agreement number is known, it shall also be on the sign.

**Waste Minimization Plan (WMP)**

In the interest of resource development, submission of additional well gas capture development plan information is deferred but may be required by the BLM Authorized Officer at a later date.

**A. DRILLING OPERATIONS REQUIREMENTS**

The BLM is to be notified in advance for a representative to witness:

- a. Spudding well (minimum of 24 hours)
- b. Setting and/or Cementing of all casing strings (minimum of 4 hours)
- c. BOPE tests (minimum of 4 hours)

☒ Lea County

Call the Hobbs Field Station, 414 West Taylor, Hobbs NM 88240,  
(575) 393-3612

1. **Hydrogen Sulfide (H<sub>2</sub>S) monitors shall be installed prior to drilling out the surface shoe. If H<sub>2</sub>S is detected in concentrations greater than 100 ppm, the Hydrogen Sulfide area shall meet Onshore Order 6 requirements, which includes equipment and personnel/public protection items. If Hydrogen Sulfide is encountered, provide measured values and formations to the BLM.**
2. **Unless the production casing has been run and cemented or the well has been properly plugged, the drilling rig shall not be removed from over the hole without prior approval. If the drilling rig is removed without approval – an Incident of Non-Compliance will be written and will be a “Major” violation.**
3. **Floor controls are required for 3M or Greater systems. These controls will be on the rig floor, unobstructed, readily accessible to the driller and will be operational at all times during drilling and/or completion activities. Rig floor is defined as the area immediately around the rotary table; the area immediately above the substructure on which the draw works is located, this does not include the dog house or stairway area.**
4. **The record of the drilling rate along with the GR/N well log run from TD to surface (horizontal well – vertical portion of hole) shall be submitted to the BLM office as well as all other logs run on the borehole 30 days from completion. If available, a digital copy of the logs is to be submitted in addition to the paper copies. The Rustler top and top and bottom of Salt are to be recorded on the Completion Report.**

#### **B. CASING**

**Changes to the approved APD casing program need prior approval if the items substituted are of lesser grade or different casing size or are Non-API. The Operator can exchange the components of the proposal with that of superior strength (i.e. changing from J-55 to N-80, or from 36# to 40#). Changes to the approved cement program need prior approval if the altered cement plan has less volume or strength or if the changes are substantial (i.e. Multistage tool, ECP, etc.). The initial wellhead installed on the well will remain on the well with spools used as needed.**

**Centralizers required on surface casing per Onshore Order 2.III.B.1.f.**

#### **Wait on cement (WOC) for Water Basin:**

**After cementing but before commencing any tests, the casing string shall stand cemented under pressure until both of the following conditions have been met: 1) cement reaches a minimum compressive strength of 500 psi at the shoe, 2) until cement has been in place at least 8 hours. WOC time will be recorded in the**

driller's log. See individual casing strings for details regarding lead cement slurry requirements.

No pea gravel permitted for remedial or fall back remedial without prior authorization from the BLM engineer.

Possibility of water flows in the Salado and Castile.

Possibility of lost circulation in the Red Beds, Rustler, and Delaware.

1. The 10-3/4 inch surface casing shall be set at approximately 740 feet (in a competent bed below the Magenta Dolomite, which is a Member of the Rustler, and if salt is encountered, set casing at least 25 feet above the salt) and cemented to the surface.
  - a. If cement does not circulate to the surface, the appropriate BLM office shall be notified and a temperature survey utilizing an electronic type temperature survey with surface log readout will be used or a cement bond log shall be run to verify the top of the cement. Temperature survey will be run a minimum of six hours after pumping cement and ideally between 8-10 hours after completing the cement job.
  - b. Wait on cement (WOC) time for a primary cement job is to include the lead cement slurry.
  - c. Wait on cement (WOC) time for a remedial job will be a minimum of 4 hours after bringing cement to surface or 500 pounds compressive strength, whichever is greater.
  - d. If cement falls back, remedial cementing will be done prior to drilling out that string.

Intermediate casing shall be kept fluid filled while running into hole to meet BLM minimum collapse requirements.

2. The minimum required fill of cement behind the 7-5/8 inch intermediate casing, which shall be set at approximately 11700 feet (basal anhydrite of the Castile formation or the top of the Lamar Limestone), is:  
☒ Cement to surface. If cement does not circulate see B.1.a, c-d above.
3. The minimum required fill of cement behind the 5-1/2 inch production casing is:  
☒ Cement should tie-back at least 200 feet into previous casing string. Operator shall provide method of verification.
4. If hardband drill pipe is rotated inside casing, returns will be monitored for metal. If metal is found in samples, drill pipe will be pulled and rubber protectors which have a

larger diameter than the tool joints of the drill pipe will be installed prior to continuing drilling operations.

### C. PRESSURE CONTROL

1. All blowout preventer (BOP) and related equipment (BOPE) shall comply with well control requirements as described in Onshore Oil and Gas Order No. 2 and API 53.
2. Variance approved to use flex line from BOP to choke manifold. Check condition of flexible line from BOP to choke manifold, replace if exterior is damaged or if line fails test. Line to be as straight as possible with no hard bends and is to be anchored according to Manufacturer's requirements. The flexible hose can be exchanged with a hose of equal size and equal or greater pressure rating. **Anchor requirements, specification sheet and hydrostatic pressure test certification matching the hose in service, to be onsite for review. These documents shall be posted in the company man's trailer and on the rig floor.** If the BLM inspector questions the straightness of the hose, a BLM engineer will be contacted and will review in the field or via picture supplied by inspector to determine if changes are required (operator shall expect delays if this occurs).
3. **Operator has proposed a multi-bowl wellhead assembly. This assembly will only be tested when installed on the surface casing. Minimum working pressure of the blowout preventer (BOP) and related equipment (BOPE) required for drilling below the surface casing shoe shall be 10,000 (10M) psi. 10M system requires an HCR valve, remote kill line and annular to match. The remote kill line is to be installed prior to testing the system and tested to stack pressure.**
  - a. **Wellhead shall be installed by manufacturer's representatives, submit documentation with subsequent sundry.**
  - b. **If the welding is performed by a third party, the manufacturer's representative shall monitor the temperature to verify that it does not exceed the maximum temperature of the seal.**
  - c. **Manufacturer representative shall install the test plug for the initial BOP test.**
  - d. **Operator shall perform the intermediate casing integrity test to 70% of the casing burst. This will test the multi-bowl seals.**
  - e. **If the cement does not circulate and one inch operations would have been possible with a standard wellhead, the well head shall be cut off, cementing operations performed and another wellhead installed.**
4. The appropriate BLM office shall be notified a minimum of 4 hours in advance for a representative to witness the tests.
  - a. In a water basin, for all casing strings utilizing slips, these are to be set as soon as the crew and rig are ready and any fallback cement remediation has been done. The casing cut-off and BOP installation can be initiated four hours after installing the slips, which will be approximately six hours after bumping the



plug. For those casing strings not using slips, the minimum wait time before cut-off is eight hours after bumping the plug. BOP/BOPE testing can begin after cut-off or once cement reaches 500 psi compressive strength (including lead when specified), whichever is greater. However, if the float does not hold, cut-off cannot be initiated until cement reaches 500 psi compressive strength (including lead when specified).

- b. The tests shall be done by an independent service company utilizing a test plug **not a cup or J-packer**.
- c. The test shall be run on a 5000 psi chart for a 2-3M BOP/BOP, on a 10000 psi chart for a 5M BOP/BOPE and on a 15000 psi chart for a 10M BOP/BOPE. If a linear chart is used, it shall be a one hour chart. A circular chart shall have a maximum 2 hour clock. If a twelve hour or twenty-four hour chart is used, tester shall make a notation that it is run with a two hour clock.
- d. The results of the test shall be reported to the appropriate BLM office.
- e. All tests are required to be recorded on a calibrated test chart. **A copy of the BOP/BOPE test chart and a copy of independent service company test will be submitted to the appropriate BLM office.**
- f. The BOP/BOPE test shall include a low pressure test from 250 to 300 psi. The test will be held for a minimum of 10 minutes if test is done with a test plug and 30 minutes without a test plug. This test shall be performed prior to the test at full stack pressure.

#### **D. DRILL STEM TEST**

If drill stem tests are performed, Onshore Order 2.III.D shall be followed.

#### **E. WASTE MATERIAL AND FLUIDS**

All waste (i.e. drilling fluids, trash, salts, chemicals, sewage, gray water, etc.) created as a result of drilling operations and completion operations shall be safely contained and disposed of properly at a waste disposal facility. No waste material or fluid shall be disposed of on the well location or surrounding area.

Porto-johns and trash containers will be on-location during fracturing operations or any other crew-intensive operations.

**CLN 09/05/2017**

**HOBBS OCD**

**NOV 3 02017**

**RECEIVED**

**PECOS DISTRICT  
SURFACE USE  
CONDITIONS OF APPROVAL**

OPERATOR'S NAME:	EOG Resources Inc.
LEASE NO.:	NM66927
WELL NAME & NO.:	708H-Nautilus 16 Fed Com
SURFACE HOLE FOOTAGE:	280'S & 2530'E
BOTTOM HOLE FOOTAGE	2412'S & 2030'E
LOCATION:	Section 16, T.26 S., R.34 E., NMPM
COUNTY:	Lea County, New Mexico

**TABLE OF CONTENTS**

Standard Conditions of Approval (COA) apply to this APD. If any deviations to these standards exist or special COAs are required, the section with the deviation or requirement will be checked below.

- ☐ **General Provisions**
- ☐ **Permit Expiration**
- ☐ **Archaeology, Paleontology, and Historical Sites**
- ☐ **Noxious Weeds**
- ☒ **Special Requirements**
  - Lesser Prairie-Chicken Timing Stipulations
  - Below Ground-level Abandoned Well Marker
- ☒ **Construction**
  - Notification
  - Topsoil
  - Closed Loop System
  - Federal Mineral Material Pits
  - Well Pads
  - Roads
- ☐ **Road Section Diagram**
- ☒ **Production (Post Drilling)**
  - Well Structures & Facilities
  - Pipelines
- ☐ **Interim Reclamation**
- ☐ **Final Abandonment & Reclamation**

## **I. GENERAL PROVISIONS**

The approval of the Application For Permit To Drill (APD) is in compliance with all applicable laws and regulations: 43 Code of Federal Regulations 3160, the lease terms, Onshore Oil and Gas Orders, Notices To Lessees, New Mexico Oil Conservation Division (NMOCD) Rules, National Historical Preservation Act As Amended, and instructions and orders of the Authorized Officer. Any request for a variance shall be submitted to the Authorized Officer on Form 3160-5, Sundry Notices and Report on Wells.

## **II. PERMIT EXPIRATION**

If the permit terminates prior to drilling and drilling cannot be commenced within 60 days after expiration, an operator is required to submit Form 3160-5, Sundry Notices and Reports on Wells, requesting surface reclamation requirements for any surface disturbance. However, if the operator will be able to initiate drilling within 60 days after the expiration of the permit, the operator must have set the conductor pipe in order to allow for an extension of 60 days beyond the expiration date of the APD. (Filing of a Sundry Notice is required for this 60 day extension.)

## **III. ARCHAEOLOGICAL, PALEONTOLOGY & HISTORICAL SITES**

Any cultural and/or paleontological resource discovered by the operator or by any person working on the operator's behalf shall immediately report such findings to the Authorized Officer. The operator is fully accountable for the actions of their contractors and subcontractors. The operator shall suspend all operations in the immediate area of such discovery until written authorization to proceed is issued by the Authorized Officer. An evaluation of the discovery shall be made by the Authorized Officer to determine the appropriate actions that shall be required to prevent the loss of significant cultural or scientific values of the discovery. The operator shall be held responsible for the cost of the proper mitigation measures that the Authorized Officer assesses after consultation with the operator on the evaluation and decisions of the discovery. Any unauthorized collection or disturbance of cultural or paleontological resources may result in a shutdown order by the Authorized Officer.

## **IV. NOXIOUS WEEDS**

The operator shall be held responsible if noxious weeds become established within the areas of operations. Weed control shall be required on the disturbed land where noxious weeds exist, which includes the roads, pads, associated pipeline corridor, and adjacent land affected by the establishment of weeds due to this action. The operator shall consult with the Authorized Officer for acceptable weed control methods, which include following EPA and BLM requirements and policies.

## V. SPECIAL REQUIREMENT(S)

### **Timing Limitation Stipulation / Condition of Approval for lesser prairie-chicken:**

Oil and gas activities including 3-D geophysical exploration, and drilling will not be allowed in lesser prairie-chicken habitat during the period from March 1st through June 15th annually. During that period, other activities that produce noise or involve human activity, such as the maintenance of oil and gas facilities, pipeline, road, and well pad construction, will be allowed except between 3:00 am and 9:00 am. The 3:00 am to 9:00 am restriction will not apply to normal, around-the-clock operations, such as venting, flaring, or pumping, which do not require a human presence during this period. Additionally, no new drilling will be allowed within up to 200 meters of leks known at the time of permitting. Normal vehicle use on existing roads will not be restricted. Exhaust noise from pump jack engines must be muffled or otherwise controlled so as not to exceed 75 db measured at 30 feet from the source of the noise.

**Below Ground-level Abandoned Well Marker to avoid raptor perching:** Upon the plugging and subsequent abandonment of the well, the well marker will be installed at ground level on a plate containing the pertinent information for the plugged well. For more installation details, contact the Carlsbad Field Office at 575-234-5972.

### **Fence Requirement**

Where entry is granted across a fence line, the fence must be braced and tied off on both sides of the passageway with H-braces prior to cutting. The fence will be restored to its prior condition or better, once the work is completed. The operator will notify the private surface landowner or the grazing allotment holder prior to crossing any fence.

### **Cattle Guards**

Appropriately sized cattle guards, sufficient to carry out the Proposed Action, will be installed and maintained at road-fence crossings. Existing cattle guards will be repaired or replaced if they are damaged or have deteriorated beyond practical use. The operator is responsible for the condition of the existing cattle guards that are in place and are utilized during lease operations. A gate will be constructed on one side of the cattle guard and fastened securely to H-braces.

Damage to structures that provide water to livestock must be immediately corrected by the operator. The operator must notify the BLM office (575-234-5972) and the private surface landowner or the grazing allotment holder if any damage occurs to structures that provide water to livestock.

## **VI. CONSTRUCTION**

### **A. NOTIFICATION**

The BLM shall administer compliance and monitor construction of the access road and well pad. Notify the Carlsbad Field Office at (575) 234-5909 at least 3 working days prior to commencing construction of the access road and/or well pad.

When construction operations are being conducted on this well, the operator shall have the approved APD and Conditions of Approval (COA) on the well site and they shall be made available upon request by the Authorized Officer.

### **B. TOPSOIL**

The operator shall strip the top portion of the soil (root zone) from the entire well pad area and stockpile the topsoil along the edge of the well pad as depicted in the APD. The root zone is typically six (6) inches in depth. All the stockpiled topsoil will be redistributed over the interim reclamation areas. Topsoil shall not be used for berming the pad or facilities. For final reclamation, the topsoil shall be spread over the entire pad area for seeding preparation.

Other subsoil (below six inches) stockpiles must be completely segregated from the topsoil stockpile. Large rocks or subsoil clods (not evident in the surrounding terrain) must be buried within the approved area for interim and final reclamation.

### **C. CLOSED LOOP SYSTEM**

Tanks are required for drilling operations: No Pits.

The operator shall properly dispose of drilling contents at an authorized disposal site.

### **D. FEDERAL MINERAL MATERIALS PIT**

Payment shall be made to the BLM prior to removal of any federal mineral materials. Call the Carlsbad Field Office at (575) 234-5972.

### **E. WELL PAD SURFACING**

Surfacing of the well pad is not required.

If the operator elects to surface the well pad, the surfacing material may be required to be removed at the time of reclamation. The well pad shall be constructed in a manner which creates the smallest possible surface disturbance, consistent with safety and operational needs.

### **F. EXCLOSURE FENCING (CELLARS & PITS)**

**Exclosure Fencing**

The operator will install and maintain exclosure fencing for all open well cellars to prevent access to public, livestock, and large forms of wildlife before and after drilling operations until the pit is free of fluids and the operator initiates backfilling. (For examples of exclosure fencing design, refer to BLM's Oil and Gas Gold Book, Exclosure Fence Illustrations, Figure 1, Page 18.)

**G. ON LEASE ACCESS ROADS****Road Width**

The access road shall have a driving surface that creates the smallest possible surface disturbance and does not exceed fourteen (14) feet in width. The maximum width of surface disturbance, when constructing the access road, shall not exceed twenty-five (25) feet.

**Surfacing**

Surfacing material is not required on the new access road driving surface. If the operator elects to surface the new access road or pad, the surfacing material may be required to be removed at the time of reclamation.

Where possible, no improvements should be made on the unsurfaced access road other than to remove vegetation as necessary, road irregularities, safety issues, or to fill low areas that may sustain standing water.

The Authorized Officer reserves the right to require surfacing of any portion of the access road at any time deemed necessary. Surfacing may be required in the event the road deteriorates, erodes, road traffic increases, or it is determined to be beneficial for future field development. The surfacing depth and type of material will be determined at the time of notification.

**Crowning**

Crowning shall be done on the access road driving surface. The road crown shall have a grade of approximately 2% (i.e., a 1" crown on a 14' wide road). The road shall conform to Figure 1; cross section and plans for typical road construction.

**Ditching**

Ditching shall be required on both sides of the road.

**Turnouts**

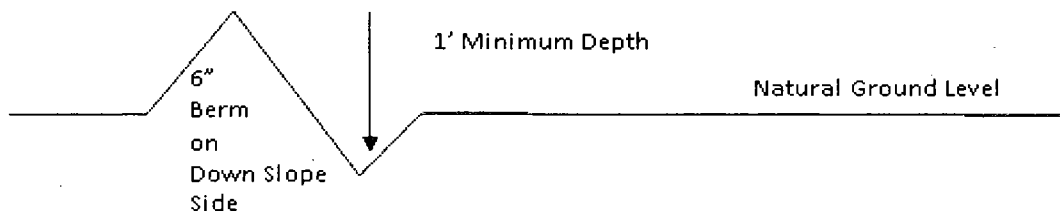
Vehicle turnouts shall be constructed on the road. Turnouts shall be intervisible with interval spacing distance less than 1000 feet. Turnouts shall conform to Figure 1; cross section and plans for typical road construction.

**Drainage**

Drainage control systems shall be constructed on the entire length of road (e.g. ditches, sidehill outslowing and insloping, lead-off ditches, culvert installation, and low water crossings).

A typical lead-off ditch has a minimum depth of 1 foot below and a berm of 6 inches above natural ground level. The berm shall be on the down-slope side of the lead-off ditch.

#### Cross Section of a Typical Lead-off Ditch



All lead-off ditches shall be graded to drain water with a 1 percent minimum to 3 percent maximum ditch slope. The spacing interval are variable for lead-off ditches and shall be determined according to the formula for spacing intervals of lead-off ditches, but may be amended depending upon existing soil types and centerline road slope (in %);

#### Formula for Spacing Interval of Lead-off Ditches

Example - On a 4% road slope that is 400 feet long, the water flow shall drain water into a lead-off ditch. Spacing interval shall be determined by the following formula:

$$400 \text{ foot road with } 4\% \text{ road slope: } \frac{400'}{4\%} + 100' = 200' \text{ lead-off ditch interval}$$

#### Cattle guards

An appropriately sized cattle guard sufficient to carry out the project shall be installed and maintained at fence/road crossings. Any existing cattle guards on the access road route shall be repaired or replaced if they are damaged or have deteriorated beyond practical use. The operator shall be responsible for the condition of the existing cattle guards that are in place and are utilized during lease operations.

#### Fence Requirement

Where entry is granted across a fence line, the fence shall be braced and tied off on both sides of the passageway prior to cutting. The operator shall notify the private surface landowner or the grazing allotment holder prior to crossing any fences.

**Livestock Watering Requirement**

Any damage to structures that provide water to livestock throughout the life of the well, caused by operations from the well site, must be immediately corrected by the operator. The operator must notify the BLM office (575-234-5972) and the private surface landowner or the grazing allotment holder if any damage occurs to structures that provide water to livestock.

**Public Access**

Public access on this road shall not be restricted by the operator without specific written approval granted by the Authorized Officer.



### Construction Steps

1. Salvage topsoil
2. Construct road

3. Redistribute topsoil
4. Revegetate slopes

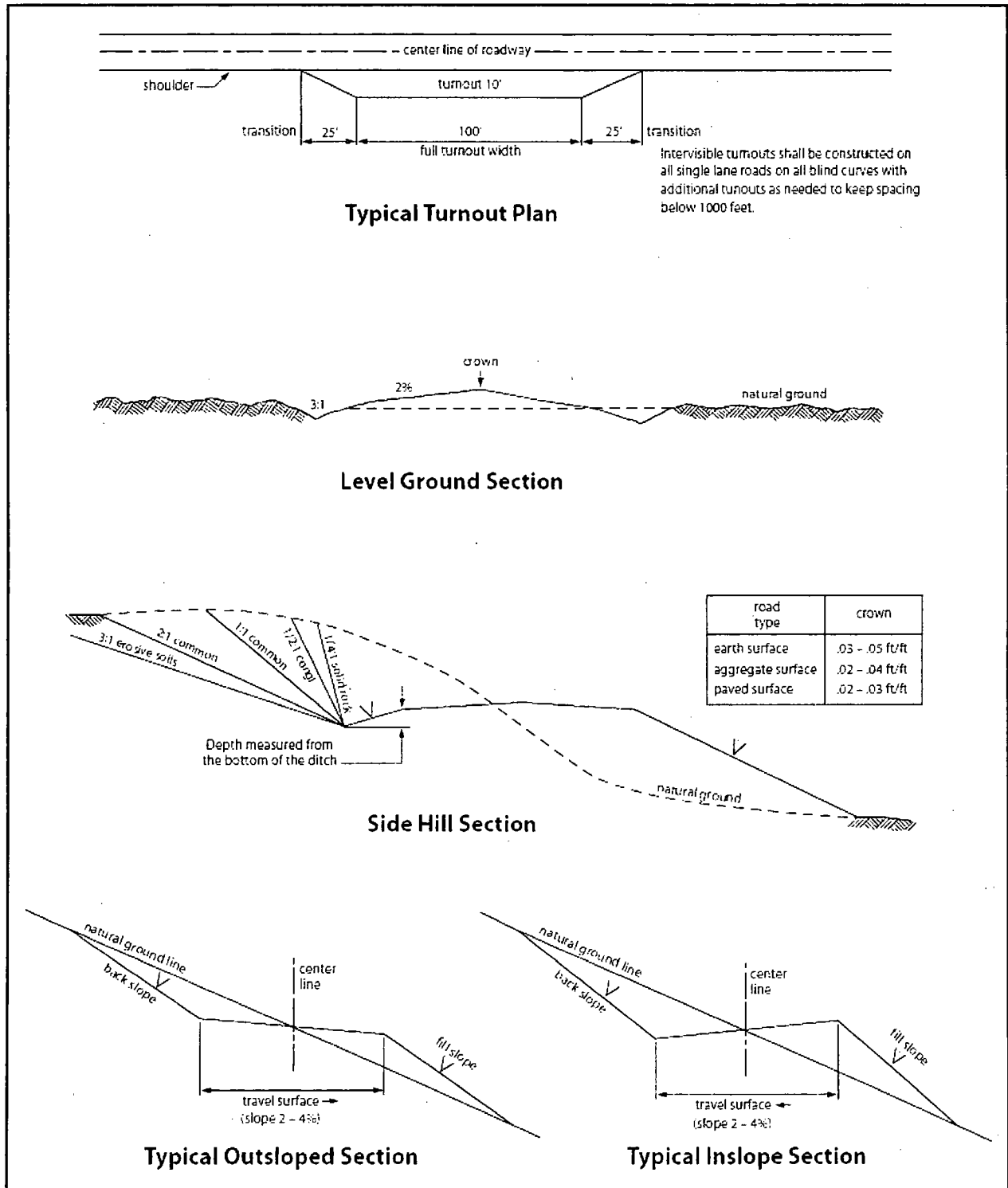


Figure 1. Cross-sections and plans for typical road sections representative of BLM resource or FS local and higher-class roads.

## **VII. PRODUCTION (POST DRILLING)**

### **A. WELL STRUCTURES & FACILITIES**

#### **Placement of Production Facilities**

Production facilities should be placed on the well pad to allow for maximum interim recontouring and revegetation of the well location.

#### **Exclosure Netting (Open-top Tanks)**

Immediately following active drilling or completion operations, the operator will take actions necessary to prevent wildlife and livestock access, including avian wildlife, to all open-topped tanks that contain or have the potential to contain salinity sufficient to cause harm to wildlife or livestock, hydrocarbons, or Resource Conservation and Recovery Act of 1976-exempt hazardous substances. At a minimum, the operator will net, screen, or cover open-topped tanks to exclude wildlife and livestock and prevent mortality. If the operator uses netting, the operator will cover and secure the open portion of the tank to prevent wildlife entry. The operator will net, screen, or cover the tanks until the operator removes the tanks from the location or the tanks no longer contain substances that could be harmful to wildlife or livestock. Use a maximum netting mesh size of 1 ½ inches. The netting must not be in contact with fluids and must not have holes or gaps.

#### **Chemical and Fuel Secondary Containment and Exclosure Screening**

The operator will prevent all hazardous, poisonous, flammable, and toxic substances from coming into contact with soil and water. At a minimum, the operator will install and maintain an impervious secondary containment system for any tank or barrel containing hazardous, poisonous, flammable, or toxic substances sufficient to contain the contents of the tank or barrel and any drips, leaks, and anticipated precipitation. The operator will dispose of fluids within the containment system that do not meet applicable state or U. S. Environmental Protection Agency livestock water standards in accordance with state law; the operator must not drain the fluids to the soil or ground. The operator will design, construct, and maintain all secondary containment systems to prevent wildlife and livestock exposure to harmful substances. At a minimum, the operator will install effective wildlife and livestock exclosure systems such as fencing, netting, expanded metal mesh, lids, and grate covers. Use a maximum netting mesh size of 1 ½ inches.

#### **Open-Vent Exhaust Stack Exclosures**

The operator will construct, modify, equip, and maintain all open-vent exhaust stacks on production equipment to prevent birds and bats from entering, and to discourage perching, roosting, and nesting. (*Recommended exclosure structures on open-vent exhaust stacks are in the shape of a cone.*) Production equipment includes, but may not be limited to, tanks, heater-treaters, separators, dehydrators, flare stacks, in-line units, and compressor mufflers.

#### **Containment Structures**

Proposed production facilities such as storage tanks and other vessels will have a secondary containment structure that is constructed to hold the capacity of 1.5 times the largest tank, plus freeboard to account for precipitation, unless more stringent protective requirements are deemed necessary.

**Painting Requirement**

All above-ground structures including meter housing that are not subject to safety requirements shall be painted a flat non-reflective paint color, **Shale Green** from the BLM Standard Environmental Color Chart (CC-001: June 2008).

**B. PIPELINES**

**BURIED PIPELINE STIPULATIONS**

A copy of the application (Grant, APD, or Sundry Notice) and attachments, including conditions of approval, survey plat and/or map, will be on location during construction. BLM personnel may request to you a copy of your permit during construction to ensure compliance with all stipulations.

Holder agrees to comply with the following stipulations to the satisfaction of the Authorized Officer:

1. The Holder shall indemnify the United States against any liability for damage to life or property arising from the occupancy or use of public lands under this grant.
2. The Holder shall comply with all applicable Federal laws and regulations existing or hereafter enacted or promulgated. In any event, the holder shall comply with the Toxic Substances Control Act of 1976 as amended, 15 USC 2601 et seq. (1982) with regards to any toxic substances that are used, generated by or stored on the right-of-way or on facilities authorized under this right-of-way grant. (See 40 CFR Part 702-799 and especially, provisions on polychlorinated biphenyls, 40 CFR 761.1-761.193.) Additionally, any release of toxic substances (leaks, spills, etc.) in excess of the reportable quantity established by 40 CFR Part 117 shall be reported as required by the Comprehensive Environmental Response, Compensation, and Liability Act, section 102b. A copy of any report required or requested by any Federal agency or State government as a result of a reportable release or spill of any toxic substances shall be furnished to the authorized officer concurrent with the filing of the reports to the involved Federal agency or State government.
3. The holder agrees to indemnify the United States against any liability arising from the release of any hazardous substance or hazardous waste (as these terms are defined in the Comprehensive Environmental Response, Compensation and Liability Act of 1980, 42 U.S.C. 9601, et seq. or the Resource Conservation and Recovery Act, 42 U.S.C. 6901, et seq.) on the Right-of-Way (unless the release or threatened release is wholly unrelated to the Right-of-Way holder's activity on the Right-of-Way), or resulting from the activity of

the Right-of-Way holder on the Right-of-Way. This agreement applies without regard to whether a release is caused by the holder, its agent, or unrelated third parties.

4. If, during any phase of the construction, operation, maintenance, or termination of the pipeline, any oil or other pollutant should be discharged from the pipeline system, impacting Federal lands, the control and total removal, disposal, and cleaning up of such oil or other pollutant, wherever found, shall be the responsibility of holder, regardless of fault. Upon failure of holder to control, dispose of, or clean up such discharge on or affecting Federal lands, or to repair all damages resulting therefrom, on the Federal lands, the Authorized Officer may take such measures as he deems necessary to control and clean up the discharge and restore the area, including where appropriate, the aquatic environment and fish and wildlife habitats, at the full expense of the holder. Such action by the Authorized Officer shall not relieve holder of any responsibility as provided herein.

5. All construction and maintenance activity will be confined to the authorized right-of-way.

6. The pipeline will be buried with a minimum cover of 36 inches between the top of the pipe and ground level.

7. The maximum allowable disturbance for construction in this right-of-way will be 30 feet:

- Blading of vegetation within the right-of-way will be allowed: maximum width of blading operations will not exceed 20 feet. The trench is included in this area. (*Blading is defined as the complete removal of brush and ground vegetation.*)
- Clearing of brush species within the right-of-way will be allowed: maximum width of clearing operations will not exceed 30 feet. The trench and bladed area are included in this area. (*Clearing is defined as the removal of brush while leaving ground vegetation (grasses, weeds, etc.) intact. Clearing is best accomplished by holding the blade 4 to 6 inches above the ground surface.*)
- The remaining area of the right-of-way (if any) shall only be disturbed by compressing the vegetation. (*Compressing can be caused by vehicle tires, placement of equipment, etc.*)

8. The holder shall stockpile an adequate amount of topsoil where blading is allowed. The topsoil to be stripped is approximately 6 inches in depth. The topsoil will be segregated from other spoil piles from trench construction. The topsoil will be evenly distributed over the bladed area for the preparation of seeding.

9. The holder shall minimize disturbance to existing fences and other improvements on public lands. The holder is required to promptly repair improvements to at least their former state. Functional use of these improvements will be maintained at all times. The holder will contact the owner of any improvements prior to disturbing them. When necessary to pass through a fence line, the fence shall be braced on both sides of the passageway prior to cutting of the fence. No permanent gates will be allowed unless approved by the Authorized Officer.

10. Vegetation, soil, and rocks left as a result of construction or maintenance activity will be randomly scattered on this right-of-way and will not be left in rows, piles, or berms, unless otherwise approved by the Authorized Officer. The entire right-of-way shall be recontoured to match the surrounding landscape. The backfilled soil shall be compacted and a 6 inch berm will be left over the ditch line to allow for settling back to grade.

11. In those areas where erosion control structures are required to stabilize soil conditions, the holder will install such structures as are suitable for the specific soil conditions being encountered and which are in accordance with sound resource management practices.

12. The holder will reseed all disturbed areas. Seeding will be done according to the attached seeding requirements, using the following seed mix.

☐ seed mixture 1

☐ seed mixture 3

☐ seed mixture 2

☐ seed mixture 4

☒ seed mixture 2/LPC

☐ Aplomado Falcon Mixture

13. All above-ground structures not subject to safety requirements shall be painted by the holder to blend with the natural color of the landscape. The paint used shall be color which simulates "Standard Environmental Colors" – **Shale Green**, Munsell Soil Color No. 5Y 4/2.

14. The pipeline will be identified by signs at the point of origin and completion of the right-of-way and at all road crossings. At a minimum, signs will state the holder's name, BLM serial number, and the product being transported. All signs and information thereon will be posted in a permanent, conspicuous manner, and will be maintained in a legible condition for the life of the pipeline.

15. The holder shall not use the pipeline route as a road for purposes other than routine maintenance as determined necessary by the Authorized Officer in consultation with the holder before maintenance begins. The holder will take whatever steps are necessary to ensure that the pipeline route is not used as a roadway. As determined necessary during the life of the pipeline, the Authorized Officer may ask the holder to construct temporary deterrence structures.

16. Any cultural and/or paleontological resources (historic or prehistoric site or object) discovered by the holder, or any person working on his behalf, on public or Federal land shall be immediately reported to the Authorized Officer. Holder shall suspend all operations in the immediate area of such discovery until written authorization to proceed is issued by the Authorized Officer. An evaluation of the discovery will be made by the Authorized Officer to determine appropriate actions to prevent the loss of significant cultural or scientific values. The holder will be responsible for the cost of evaluation and any decision as to proper mitigation measures will be made by the Authorized Officer after consulting with the holder.

17. The operator shall be held responsible if noxious weeds become established within the areas of operations. Weed control shall be required on the disturbed land where noxious weeds exist, which includes associated roads, pipeline corridor and adjacent land affected by the establishment of weeds due to this action. The operator shall consult with the Authorized Officer for acceptable weed control methods, which include following EPA and BLM requirements and policies.

18. Escape Ramps - The operator will construct and maintain pipeline/utility trenches [that are not otherwise fenced, screened, or netted] to prevent livestock, wildlife, and humans from becoming entrapped. At a minimum, the operator will construct and maintain escape ramps, ladders, or other methods of avian and terrestrial wildlife escape in the trenches according to the following criteria:

- a. Any trench left open for eight (8) hours or less is not required to have escape ramps; however, before the trench is backfilled, the contractor/operator shall inspect the trench for wildlife, remove all trapped wildlife, and release them at least 100 yards from the trench.
- b. For trenches left open for eight (8) hours or more, earthen escape ramps (built at no more than a 30 degree slope and spaced no more than 500 feet apart) shall be placed in the trench.

19. Special Stipulations:

**Lesser Prairie-Chicken**

Oil and gas activities will not be allowed in lesser prairie-chicken habitat during the period from March 1st through June 15th annually. During that period, other activities

that produce noise or involve human activity, such as the maintenance of oil and gas facilities, geophysical exploration other than 3-D operations, and pipeline, road, and well pad construction, will be allowed except between 3:00 am and 9:00 am. The 3:00 am to 9:00 am restriction will not apply to normal, around-the-clock operations, such as venting, flaring, or pumping, which do not require a human presence during this period. Normal vehicle use on existing roads will not be restricted. Exhaust noise from pump jack engines must be muffled or otherwise controlled so as not to exceed 75 db measured at 30 ft. from the source of the noise.

## **VIII. INTERIM RECLAMATION**

During the life of the development, all disturbed areas not needed for active support of production operations should undergo interim reclamation in order to minimize the environmental impacts of development on other resources and uses.

Within six (6) months of well completion, operators should work with BLM surface management specialists (Jim Amos: 575-234-5909) to devise the best strategies to reduce the size of the location. Interim reclamation should allow for remedial well operations, as well as safe and efficient removal of oil and gas.

During reclamation, the removal of caliche is important to increasing the success of revegetating the site. Removed caliche that is free of contaminants may be used for road repairs, fire walls or for building other roads and locations. In order to operate the well or complete workover operations, it may be necessary to drive, park and operate on restored interim vegetation within the previously disturbed area. Disturbing revegetated areas for production or workover operations will be allowed. If there is significant disturbance and loss of vegetation, the area will need to be revegetated. Communicate with the appropriate BLM office for any exceptions/exemptions if needed.

All disturbed areas after they have been satisfactorily prepared need to be reseeded with the seed mixture provided below.

Upon completion of interim reclamation, the operator shall submit a Sundry Notices and Reports on Wells, Subsequent Report of Reclamation (Form 3160-5).

## **IX. FINAL ABANDONMENT & RECLAMATION**

At final abandonment, well locations, production facilities, and access roads must undergo "final" reclamation so that the character and productivity of the land are restored.

Earthwork for final reclamation must be completed within six (6) months of well plugging. All pads, pits, facility locations and roads must be reclaimed to a satisfactory revegetated, safe, and stable condition, unless an agreement is made with the landowner or BLM to keep the road and/or pad intact.

After all disturbed areas have been satisfactorily prepared, these areas need to be revegetated with the seed mixture provided below. Seeding should be accomplished by

drilling on the contour whenever practical or by other approved methods. Seeding may need to be repeated until revegetation is successful, as determined by the BLM.

Operators shall contact a BLM surface protection specialist prior to surface abandonment operations for site specific objectives (Jim Amos: 575-234-5909).

**Below Ground-level Abandoned Well Marker to avoid raptor perching:** Upon the plugging and subsequent abandonment of the well, the well marker will be installed at ground level on a plate containing the pertinent information for the plugged well.



## Seed Mixture for LPC Sand/Shinnery Sites

Holder shall seed all disturbed areas with the seed mixture listed below. The seed mixture shall be planted in the amounts specified in pounds of pure live seed (PLS)\* per acre. There shall be no primary or secondary noxious weeds in the seed mixture. Seed will be tested and the viability testing of seed shall be done in accordance with State law(s) and within nine (9) months prior to purchase. Commercial seed shall be either certified or registered seed. The seed container shall be tagged in accordance with State law(s) and available for inspection by the Authorized Officer.

Seed will be planted using a drill equipped with a depth regulator to ensure proper depth of planting where drilling is possible. The seed mixture will be evenly and uniformly planted over the disturbed area (smaller/heavier seeds have a tendency to drop the bottom of the drill and are planted first). Holder shall take appropriate measures to ensure this does not occur. Where drilling is not possible, seed will be broadcast and the area shall be raked or chained to cover the seed. When broadcasting the seed, the pounds per acre are to be doubled. Seeding shall be repeated until a satisfactory stand is established as determined by the Authorized Officer. Evaluation of growth may not be made before completion of at least one full growing season after seeding.

Species to be planted in pounds of pure live seed\* per acre:

<u>Species</u>	<u>lb/acre</u>
Plains Bristlegrass	5lbs/A
Sand Bluestem	5lbs/A
Little Bluestem	3lbs/A
Big Bluestem	6lbs/A
Plains Coreopsis	2lbs/A
Sand Dropseed	1lbs/A

\*Pounds of pure live seed:

Pounds of seed x percent purity x percent germination = pounds pure live seed