

District I
1625 N. French Dr., Hobbs, NM 88240
Phone: (575) 393-6161 Fax: (575) 393-0720
District II
811 S. First St., Artesia, NM 88210
Phone: (575) 748-1283 Fax: (575) 748-9720
District III
1000 Rio Brazos Road, Aztec, NM 87410
Phone: (505) 334-6178 Fax: (505) 334-6170
District IV
1220 S. St. Francis Dr., Sante Fe, NM 87505
Phone: (505) 476-3460 Fax: (505) 476-3462

State of New Mexico
Energy, Minerals & Natural Resources
Department
OIL CONSERVATION DIVISION
1220 South St. Francis Dr.
Sante Fe, NM 87505

HOBBS OCD
DEC 08 2017
RECEIVED

FORM C-102
Revised August 1, 2011
Submit one copy to appropriate
District Office

☐ AMENDED REPORT

WELL LOCATION AND ACREAGE DEDICATION PLAT

¹ API Number 30-025- 42865	² Pool Code 94392	³ Pool Name DRAPER MILL; BONE SPRING
⁴ Property Code 315310	⁵ Property Name STREETCAR 15 FED	
⁷ OGRID No. 7377	⁸ Operator Name EOG RESOURCES, INC.	⁶ Well Number 602H
		⁹ Elevation 3351'

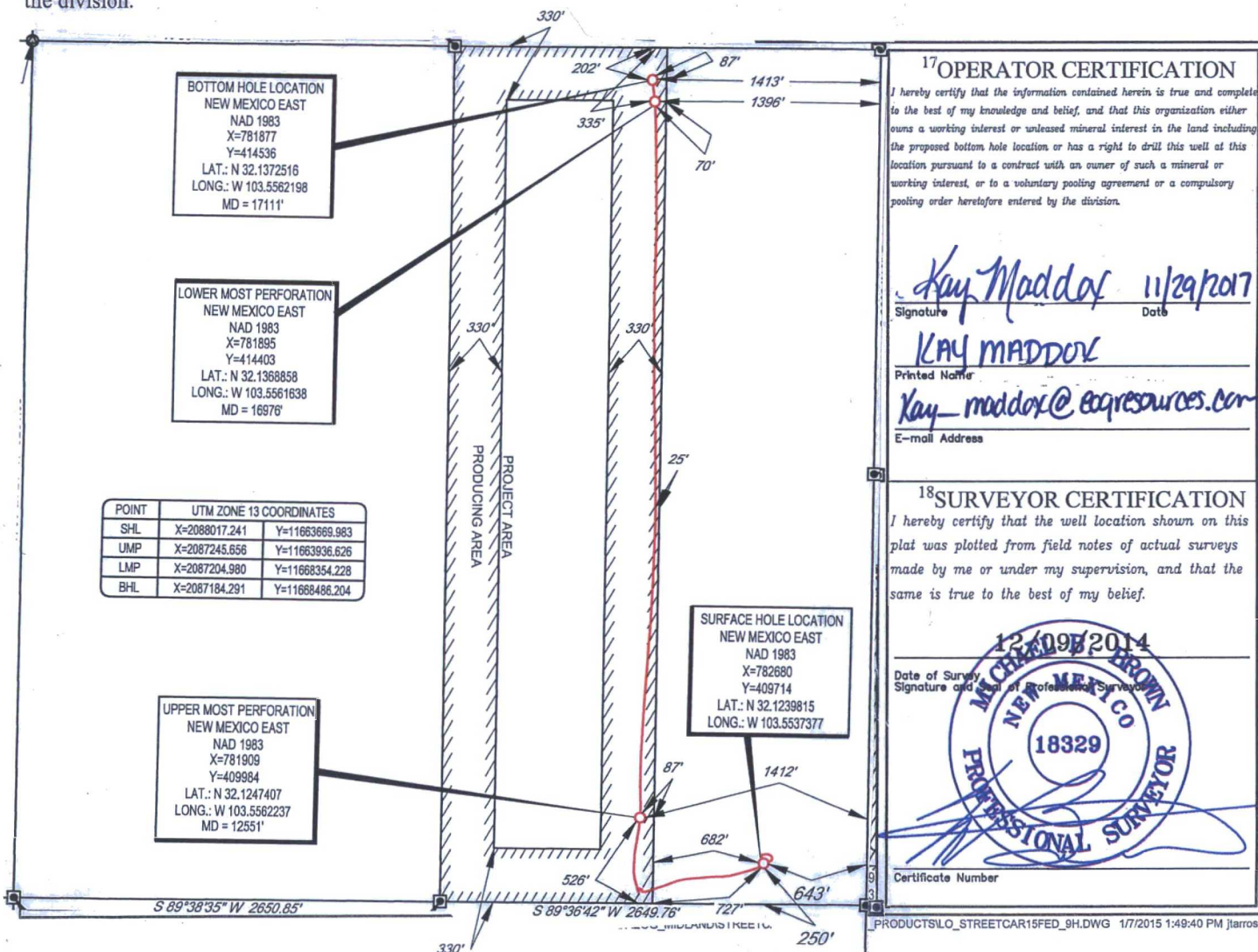
¹⁰Surface Location

UL or lot no.	Section	Township	Range	Lot Idn	Feet from the	North/South line	Feet from the	East/West line	County
P	15	25-S	33-E	-	250'	SOUTH	643	EAST	LEA

UL or lot no.	Section	Township	Range	Lot Idn	Feet from the	North/South line	Feet from the	East/West line	County
B	15	25-S	33-E	-	202	NORTH	1413	EAST'	LEA

¹² Dedicated Acres	¹³ Joint or Infill	¹⁴ Consolidation Code	¹⁵ Order No.
160.00			

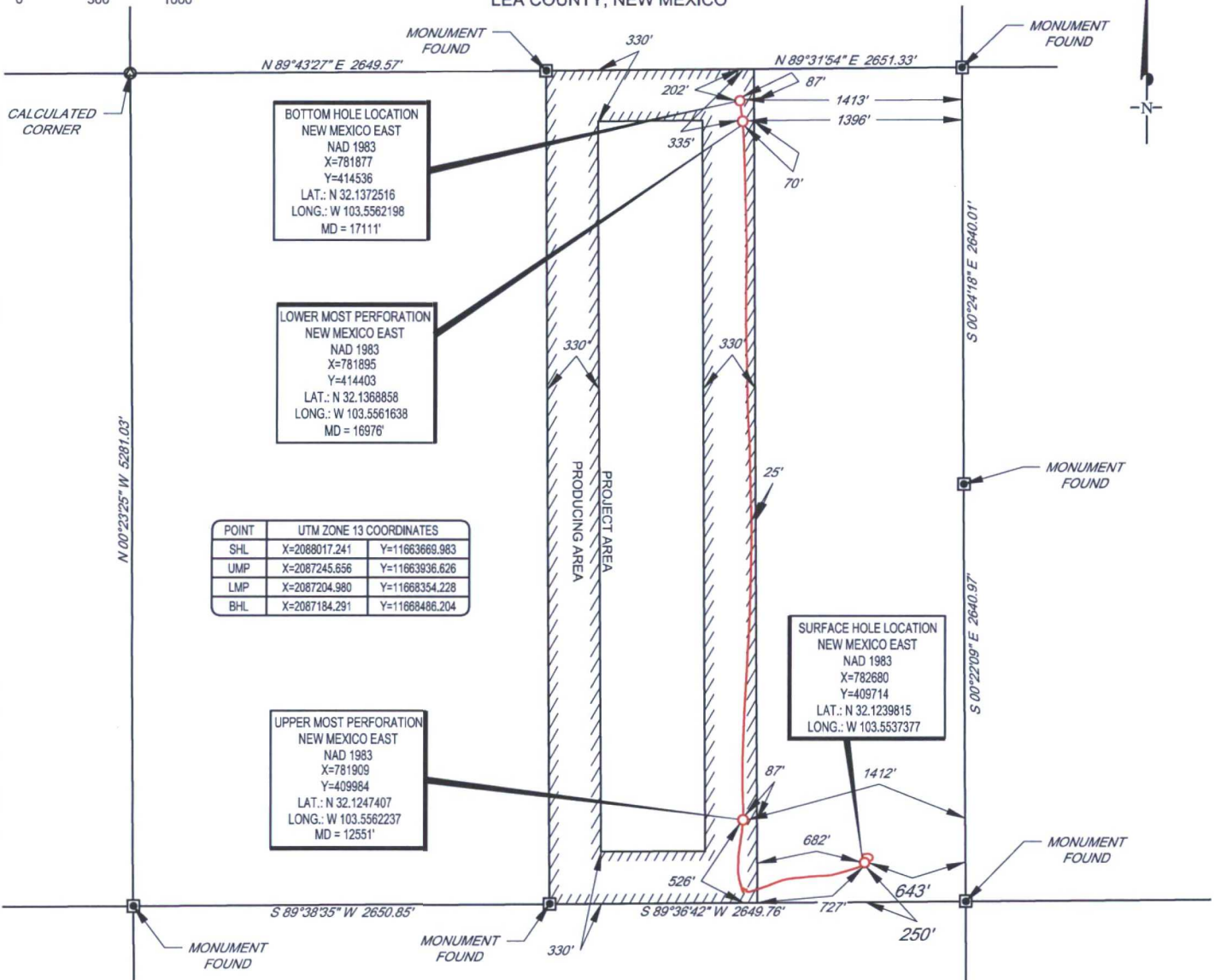
No allowable will be assigned to this completion until all interests have been consolidated or a non-standard unit has been approved by the division.



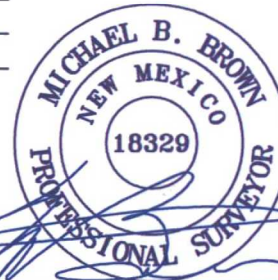
SCALE: 1" = 1000'

0' 500' 1000'

SECTION 15, TOWNSHIP 25-S, RANGE 33-E, N.M.P.M.
LEA COUNTY, NEW MEXICO



LEASE NAME & WELL NO.: STREETCAR 15 FED #602H
SECTION 15 TWP 25-S RGE 33-E SURVEY N.M.P.M.
COUNTY LEA STATE NM ELEVATION 3351'
DESCRIPTION 250' FSL & 643' FEL



Michael Blake Brown, P.S. No. 18329
NOVEMBER 6, 2017



1400 EVERMAN PARKWAY, Ste. 197 • FT. WORTH, TEXAS 76140
TELEPHONE: (817) 744-7512 • FAX (817) 744-7548
2903 NORTH BIG SPRING • MIDLAND, TEXAS 79705
TELEPHONE: (432) 682-1653 OR (800) 767-1653 • FAX (432) 682-1743
WWW.TOPOGRAPHIC.COM



STREETCAR 15 FED #602H AS-COMPLETED	REVISION:	
DATE:	11/6/17	
FILE:	AD_STREETCAR15FED_602H	
DRAWN BY:	A.M.D.	
SHEET:	1 OF 1	

- NOTES:
1. ORIGINAL DOCUMENT SIZE: 8.5" X 11"
 2. ALL BEARINGS, DISTANCES, AND COORDINATE VALUES CONTAINED HEREIN ARE GRID BASED UPON THE NEW MEXICO STATE PLANE COORDINATE SYSTEM, EAST ZONE, U.S. SURVEY FEET, NORTH AMERICAN DATUM 1983.
 3. THIS WELL LOCATION SHOWN HEREON HAS BEEN SURVEYED ON THE GROUND UNDER MY SUPERVISION AND PREPARED ACCORDING TO THE EVIDENCE FOUND AT THE TIME OF SURVEY, AND DATA PROVIDED BY EOG RESOURCES, INC. THIS CERTIFICATION IS MADE AND LIMITED TO THOSE PERSONS OR ENTITIES SHOWN ON THE FACE OF THIS PLAT AND IS NON-TRANSFERABLE. THIS SURVEY IS CERTIFIED FOR THIS TRANSACTION ONLY.