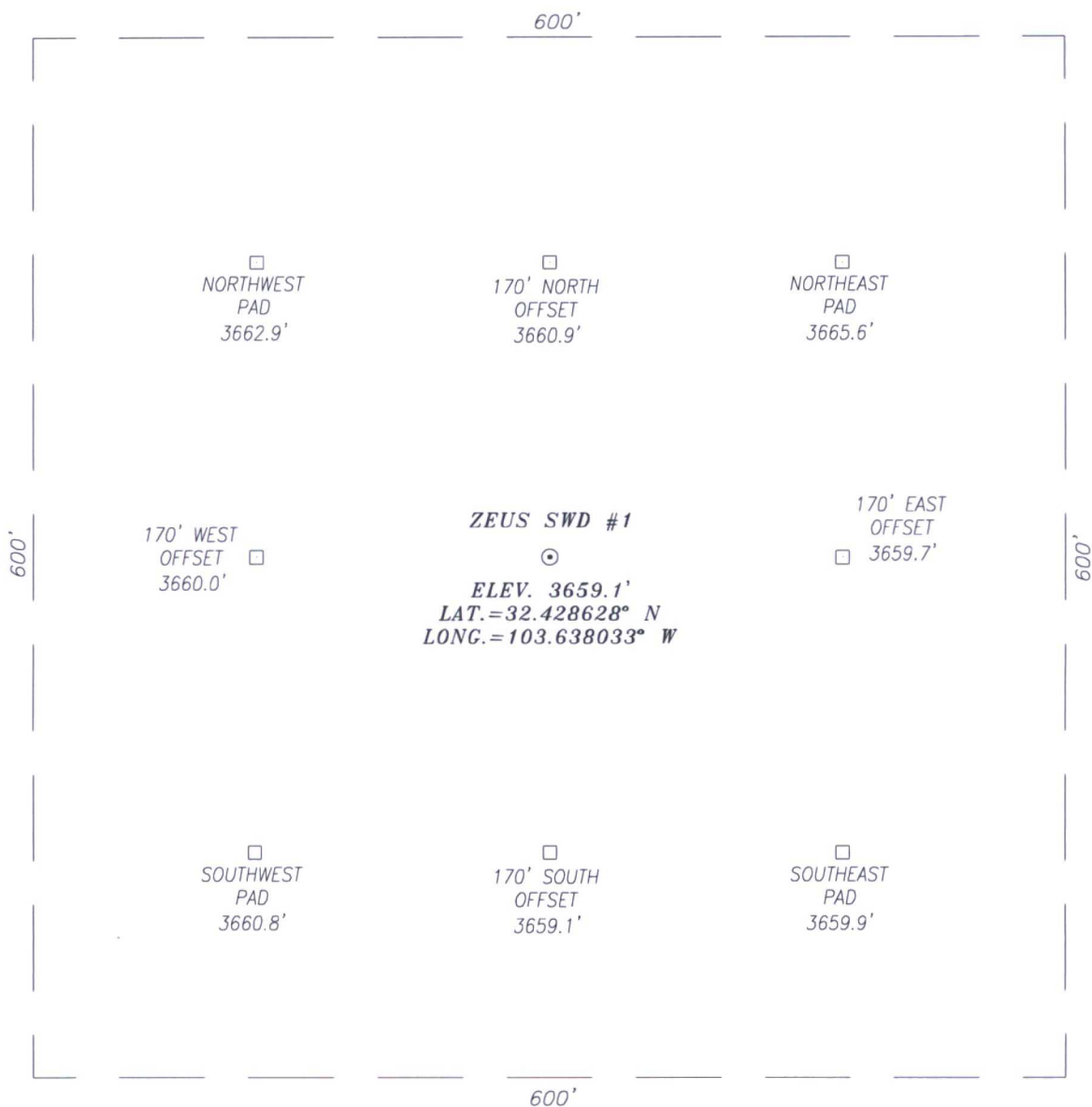


SECTION 35, TOWNSHIP 21 SOUTH, RANGE 32 EAST, N.M.P.M.,  
LEA COUNTY NEW MEXICO

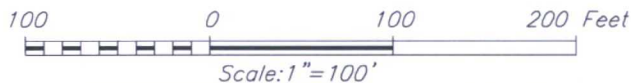


DIRECTIONS TO LOCATION:

FROM THE INTERSECTION OF U.S. HIGHWAY 62-180 AND STATE HIGHWAY 176, GO SOUTHEAST ON STATE HIGHWAY 176 FOR APPROXIMATELY 6.4 MILES TO LEASE ROAD. TURN RIGHT GO SOUTH APPROXIMATELY 0.6 MILES TO "Y" INTERSECTION. STAY RIGHT GO SOUTHWEST AT "Y" APPROXIMATELY 1.6 MILES TO INTERSECTION TURN LEFT AND GO SOUTHEAST ON MEANDERING ROAD APPROXIMATELY 0.8 MILES TO "Y" INTERSECTION. STAY LEFT GO SOUTHEAST, NORTHEAST AND SOUTH APPROXIMATELY 4.8 MILES. TURN RIGHT AND GO WEST APPROXIMATELY 0.8 MILES TURN LEFT AND GO SOUTH APPROXIMATELY 0.3 MILES. TURN RIGHT AND GO WEST APPROXIMATELY 0.7 MILES. TURN RIGHT AND GO NORTHWEST AT ROAD TEE APPROXIMATELY 1.8 MILES TO PROPOSED ROAD SURVEY FLAG. FOLLOW STAKED ROAD NORTHEAST APPROXIMATELY 190 FEET THEN EAST APPROXIMATELY 4870 FEET TO NORTHWEST CORNER OF THIS LOCATION.



DOWNTOWN DESIGN SERVICES, INC.  
10 S. IROQUOIS AVE  
TULSA, OK 74157  
Tel: 918-592-3374 Fax: 918-221-3940  
www.ddsiglobal.com



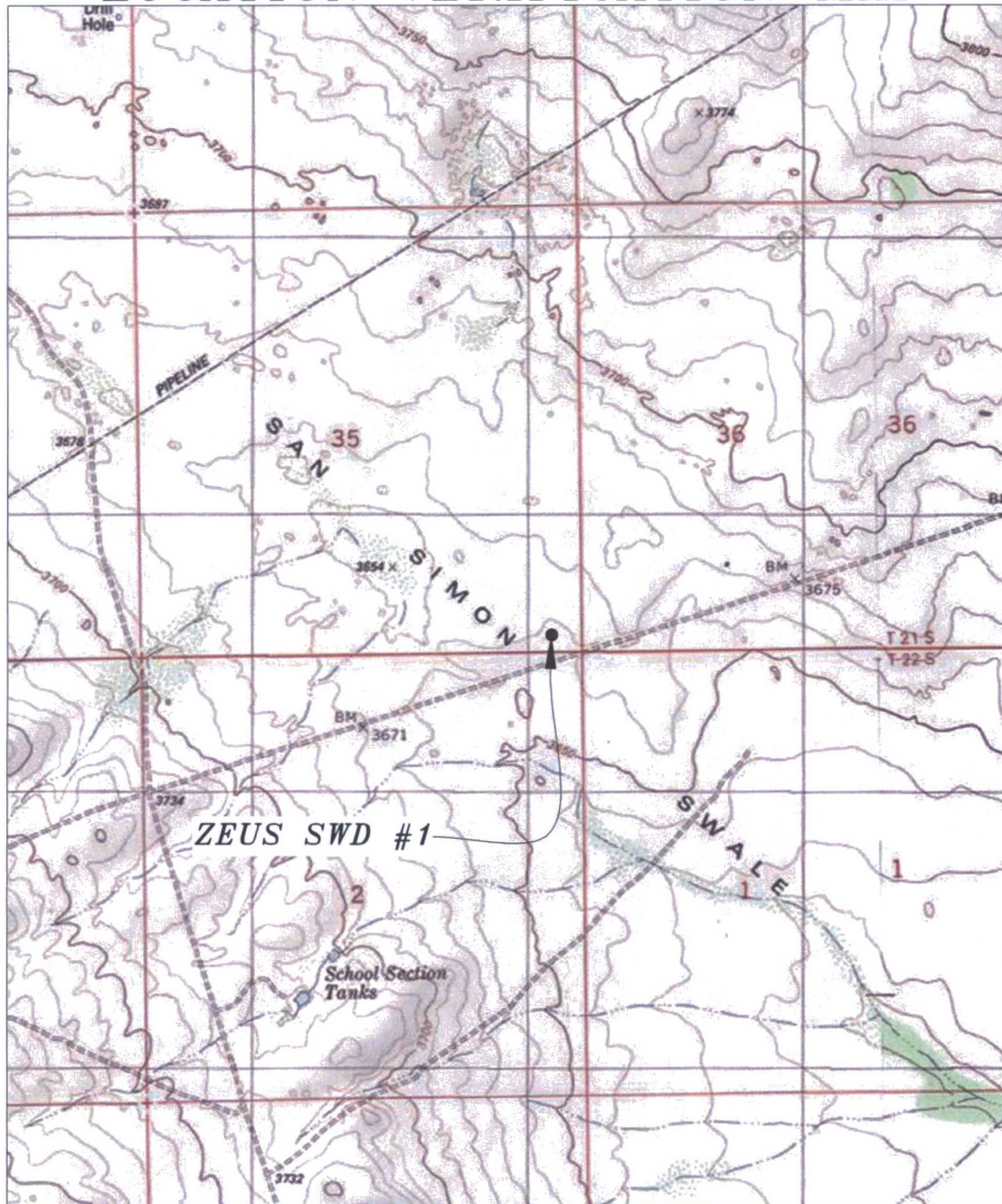
**SOLARIS WATER MIDSTREAM**

ZEUS SWD #1  
LOCATED 199 FEET FROM THE SOUTH LINE  
AND 335 FEET FROM THE EAST LINE OF SECTION 35,  
TOWNSHIP 21 SOUTH, RANGE 32 EAST, N.M.P.M.,  
LEA COUNTY, NEW MEXICO

SURVEY DATE: OCTOBER 05, 2017	PAGE: 1 OF 1
DRAFTING DATE: OCTOBER 09, 2017	
APPROVED BY: RM	DRAWN BY: DDSI
FILE: ZEUS SWD #1	



# LOCATION VERIFICATION MAP



SCALE: 1" = 2000'

CONTOUR INTERVAL: 10'

SEC. 35 TWP. 21-S RGE. 32-E

SURVEY N.M.P.M.

COUNTY LEA STATE NEW MEXICO

DESCRIPTION 199 FSL & 335 FEL

ELEVATION 3659.1'

OPERATOR SOLARIS WATER MIDSTREAM

LEASE ZEUS SWD #1

U.S.G.S. TOPOGRAPHIC MAP

LEA, N.M.

## SOLARIS WATER MIDSTREAM

SURVEY DATE: OCTOBER 5, 2017

PAGE: 1 OF 1

DRAFTING DATE: OCTOBER 9, 2017

APPROVED BY: RM

DRAWN BY: DDSI

FILE: ZEUS SWD #1





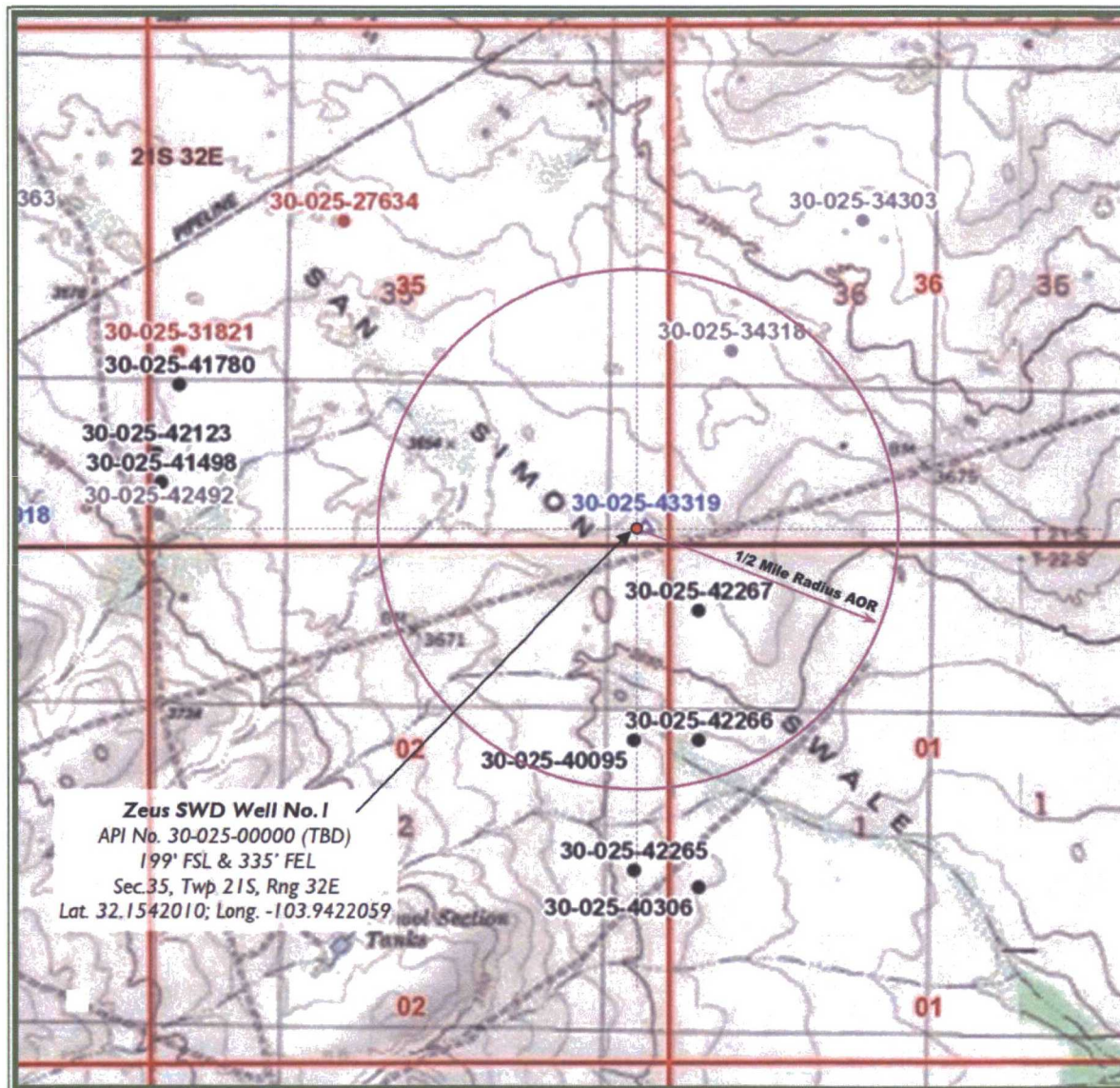
SCALE: 1" = 1 MILE

SURVEY DATE: OCTOBER 5, 2017		PAGE: 1 OF 1
DRAFTING DATE: OCTOBER 9, 2017		
APPROVED BY: RM	DRAWN BY: DDSI	FILE: ZEUS SWD #1



# Zeus SWD Well No.1 - Area of Review / Overview Map

(Attachment to NMOCD Form C-108, Application for Authority to Inject.)



25.9 miles SW of Monument, NM



Lea County, New Mexico





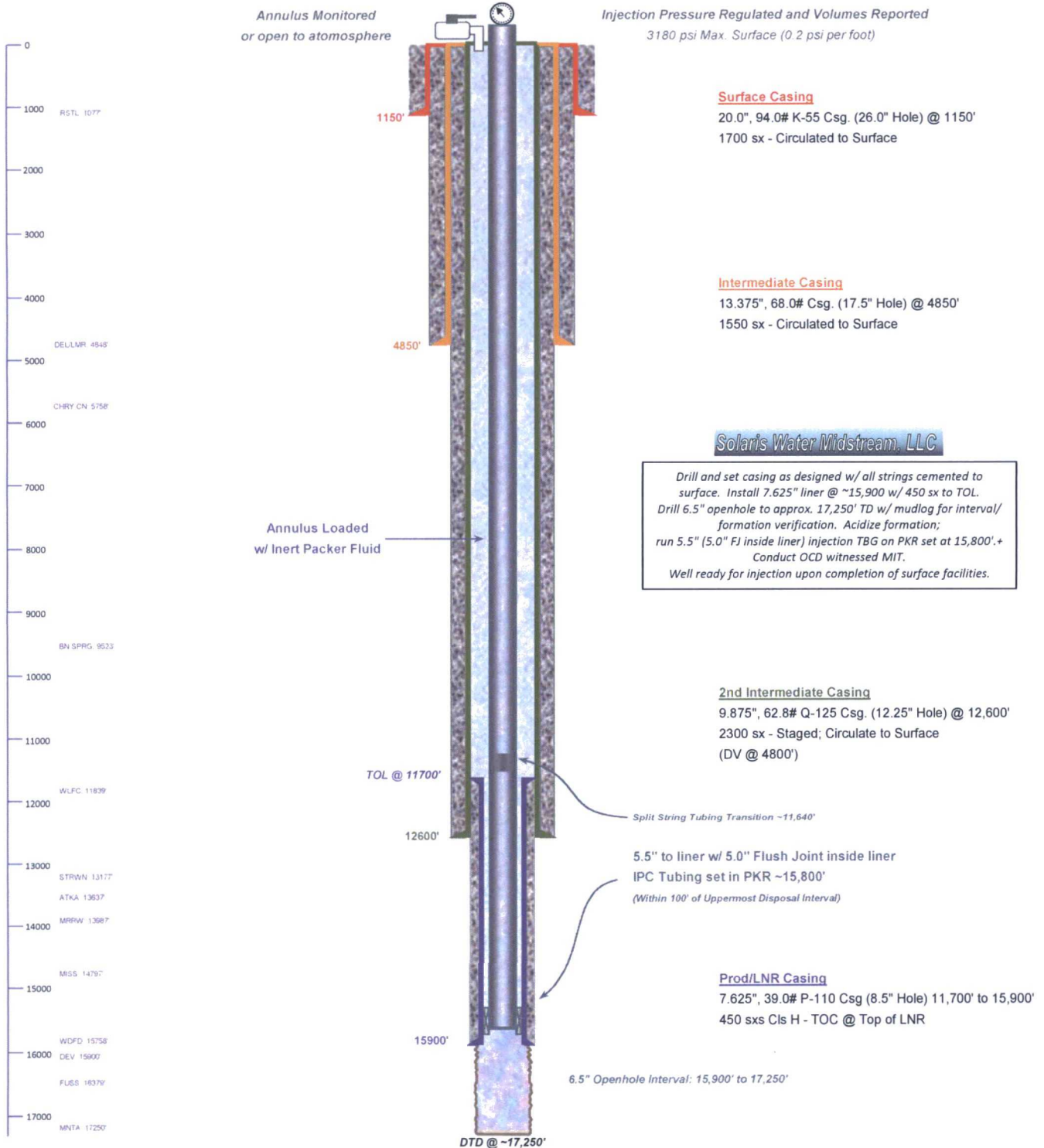


## WELL SCHEMATIC - PROPOSED Zeus SWD Well No.1

API 30-025-xxxxx  
199' FSL & 335' FEL, SEC. 35-T21S-R32E  
LEA COUNTY, NEW MEXICO

SWD; Devonian-Silurian (97869)

Spud Date: 2/15/2018  
SWD Config Dt: 3/15/2018



Drawn by: Ben Stone, Road 11/14/2017

**SOS Consulting, LLC**